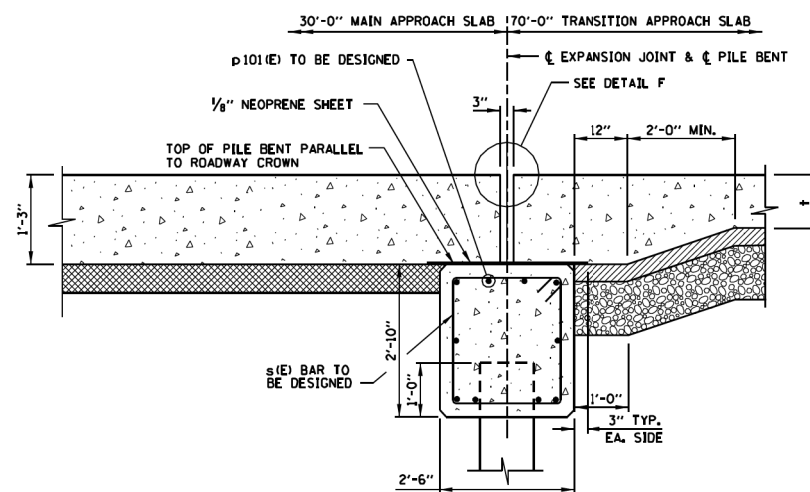
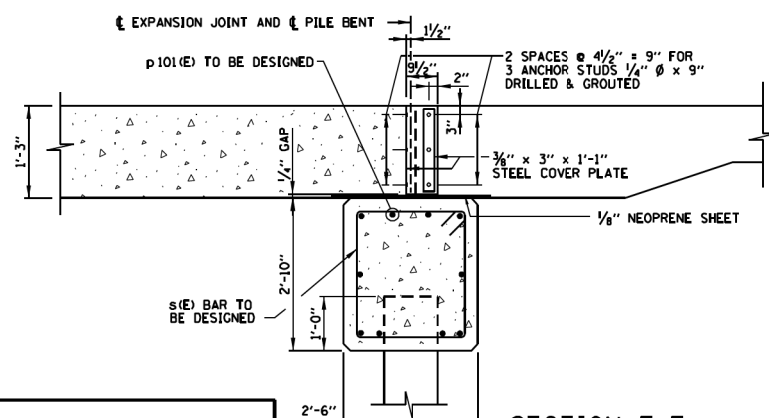


SECTION C-C  
FOR NON-INTEGRAL ABUTMENT

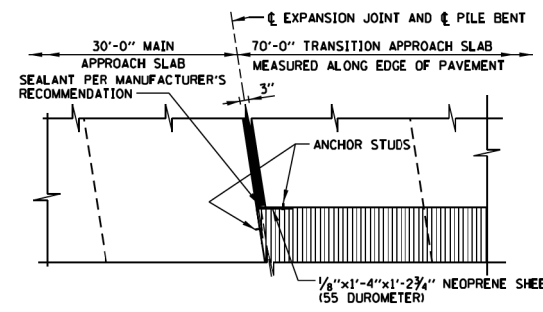


SECTION D-D  
FOR INTEGRAL & SEMI-INTEGRAL ABUTMENT

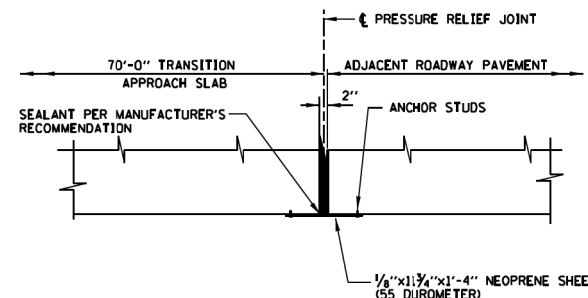


SECTION E-E  
END ELEVATION OF EXPANSION JOINT

*Paul Kovacs*  
APPROVED CHIEF ENGINEER DATE 2-28-2008



DETAIL B  
END PLAN OF EXPANSION JOINT



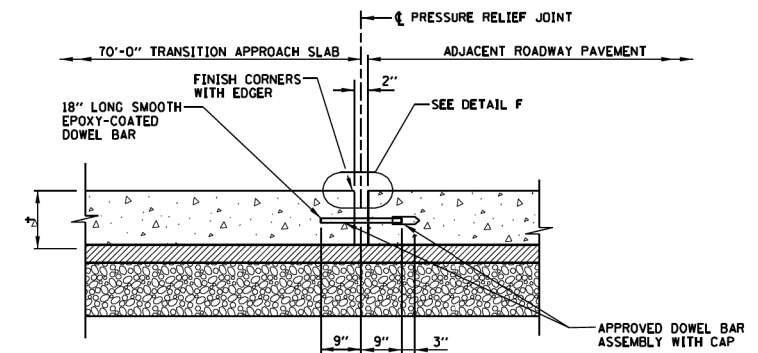
DETAIL C  
END PLAN OF PRESSURE RELIEF JOINT

LEGEND

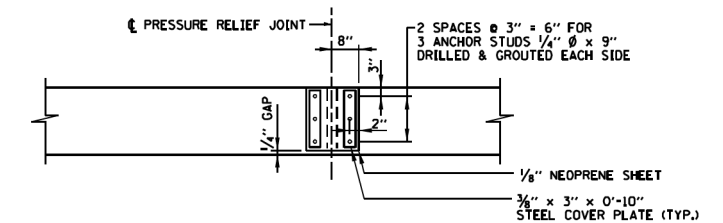
	CONCRETE		HOT-MIX ASPHALT SHOULDER
	HOT-MIX ASPHALT BASE COURSE		JOINT SEALANT
	SUBGRADE AGGREGATE		GRANULAR SUBBASE

NOTES:

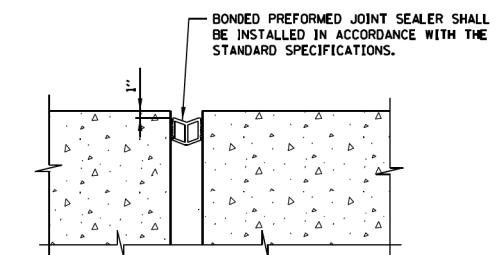
- FOR REINFORCEMENT BARS IN APPROACH SLABS, SEE SHEETS 1 & 2 (OF 3) OF THIS SERIES, AND STANDARD G4 (APPROACH SLAB TO J.P.C. PAVEMENT, MAINLINE, BAR SCHEDULE FOR 5 LANES) AND STANDARD G5 (APPROACH SLAB TO J.P.C. PAVEMENT, MAINLINE, BAR SCHEDULE FOR 4 LANES).
- IN SECTION E-E AND VIEW G-G, ANCHOR STUDS SHALL BE INSTALLED IN ACCORDANCE WITH SUBSECTION 1006.09 OF THE IDOT STANDARD SPECIFICATIONS. STEEL PLATES, BOLTS, NUTS AND WASHERS SHALL BE GALVANIZED.
- THE THICKNESSES OF HOT-MIX ASPHALT BASE COURSE AND SUBGRADE AGGREGATE SHALL BE THE SAME AS THEY ARE FOR THE ADJACENT PAVEMENT SECTIONS.
- THE DIMENSION  $\dagger$  IS THE THICKNESS OF THE TRANSITION APPROACH SLAB AS DEFINED IN THE DESIGN PLANS.



SECTION F-F  
PRESSURE RELIEF JOINT



VIEW G-G  
END ELEVATION OF PRESSURE RELIEF JOINT



DETAIL F  
BONDED PREFORMED JOINT SEALER

SHEET 3 OF 3

**Illinois Tollway**  
Open Roads for a Faster Future

APPROACH SLAB TO J.P.C. PAVEMENT, MAINLINE

STANDARD G3-02

BOWMAN, BARRETT & ASSOCIATES INC.  
CONSULTING ENGINEERS  
Chicago, Illinois  
312.228.0100  
www.bbandainc.com

FILE NAME = #FILES#

USER NAME = default

PLOT SCALE = #SCALE#

PLOT DATE = 6/20/2012

DESIGNED -

DRAWN -

CHECKED - RGR

DATE - 6/20/2012

REVISED -

REVISED -

REVISED -

REVISED -

STATE OF ILLINOIS  
DEPARTMENT OF TRANSPORTATION

TOLLWAY STANDARD DRAWING

SCALE:

SHEET NO. N/A OF N/A SHEETS

STA.

TO STA.

F.A. RTE.

94

SECTION

49-1-R-1

COUNTY

LAKE

TOTAL SHEETS

677

SHEET NO.

664C

CONTRACT NO. 60L77

ILLINOIS FED. AID PROJECT

S:\1101\95-CADD\60L77-IL-173\60L77-Sheets\160L77-INT-151TH.dwg