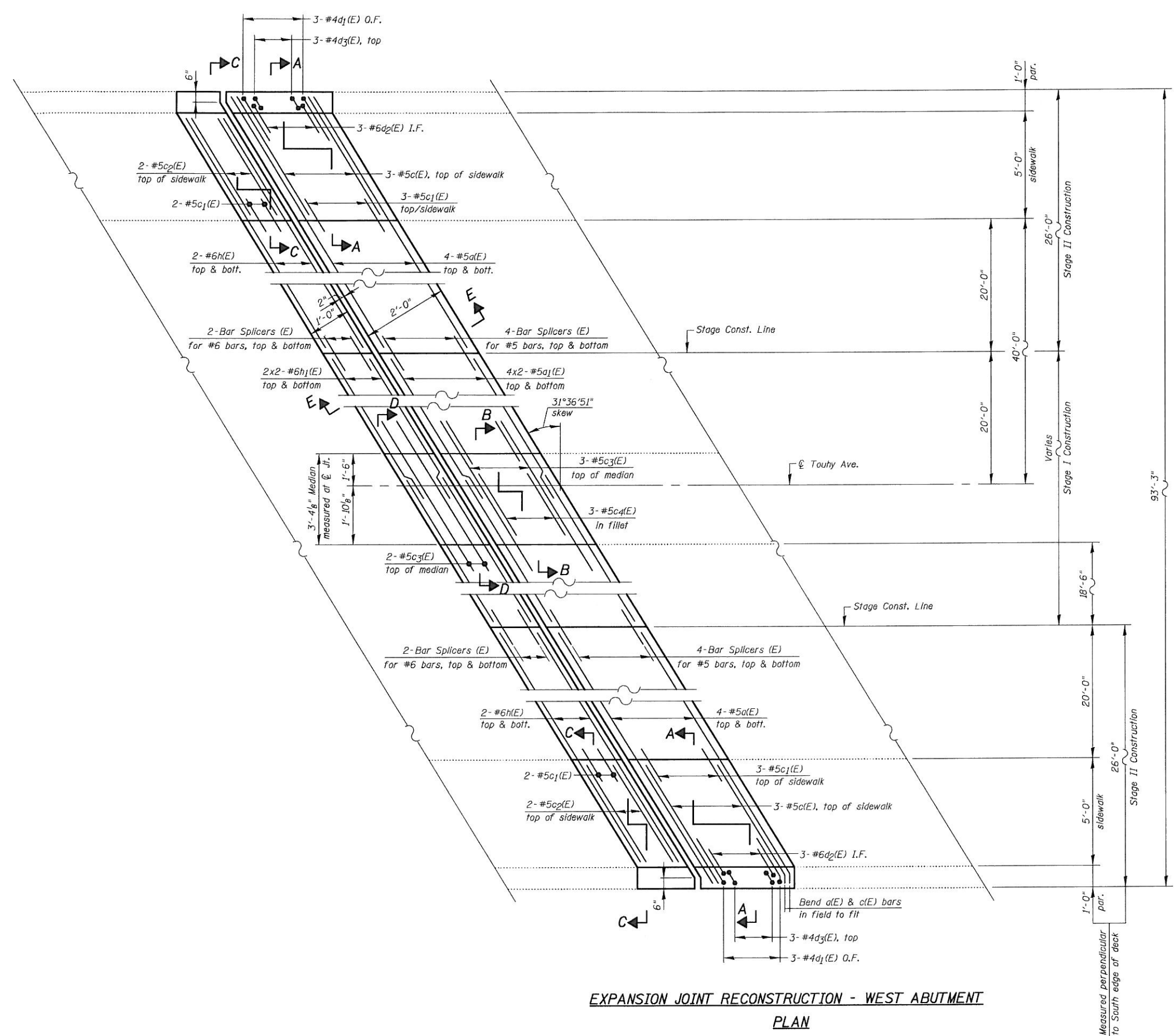
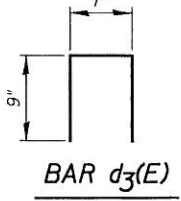
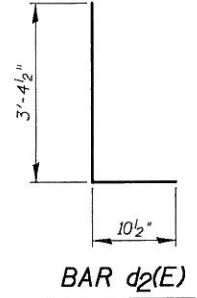
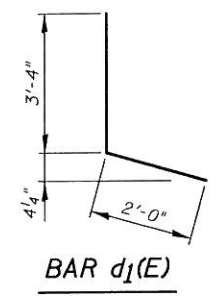
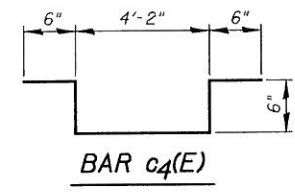
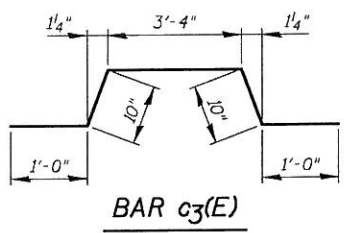
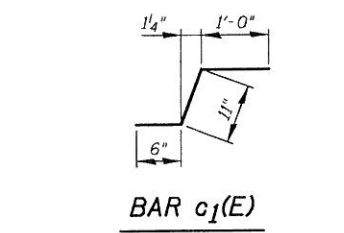


FILE NAME = I:\102915_Touhy Ave\Structural\CADD_Sheets\0160P72-06-jt_recon_west_abut-I.dgn



EXPANSION JOINT RECONSTRUCTION - WEST ABUTMENT
PLAN



BILL OF MATERIAL

Bar	No.	Size	Length	Shape	
a(E)	16	#5	30'-1"	—	
a1(E)	16	#5	25'-2"	—	
c(E)	6	#5	6'-7"	—	
c1(E)	10	#5	2'-5"	┌	
c2(E)	4	#5	5'-4"	—	
c3(E)	5	#5	7'-0"	┌	
c4(E)	3	#5	6'-2"	┌	
d1(E)	6	#4	5'-4"	└	
d2(E)	6	#6	4'-3"	└	
d3(E)	6	#4	2'-1"	└	
h(E)	8	#6	29'-0"	—	
h1(E)	8	#6	25'-4"	—	
Reinforcement Bars, Epoxy Coated				Pound	1,790
Concrete Removal				Cu Yd	18.4
Concrete Superstructure				Cu Yd	18.4
Bar Splicers				Each	24

Note:
Eastbound lanes are slightly skewed, however, because of the exaggeration of the horizontal and the vertical scales, this plan shows the lanes straight for clarity. See General Plan & Elevation, Sht. S1.

LEGEND:
O.F. = Outside Face
I.F. = Inside Face

MIN. BAR LAP:
#5 bars = 2'-2"
#6 bars = 2'-7"

NOTES:
See Sht. S7 for Sections A-A, B-B, C-C & D-D.
See Sht. S8 for Section E-E.