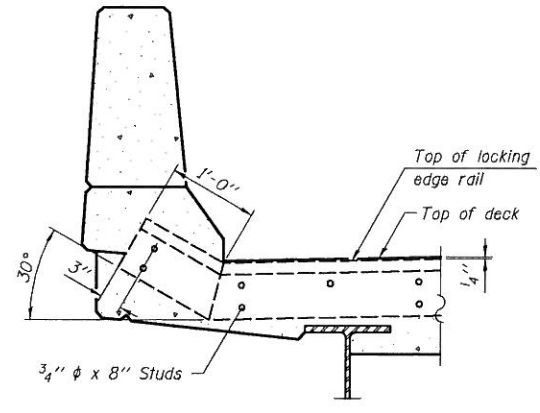
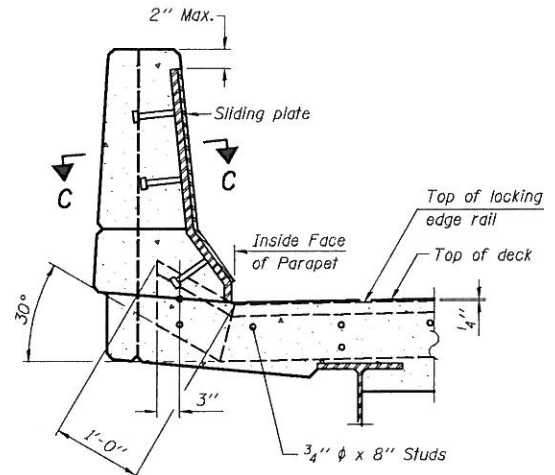


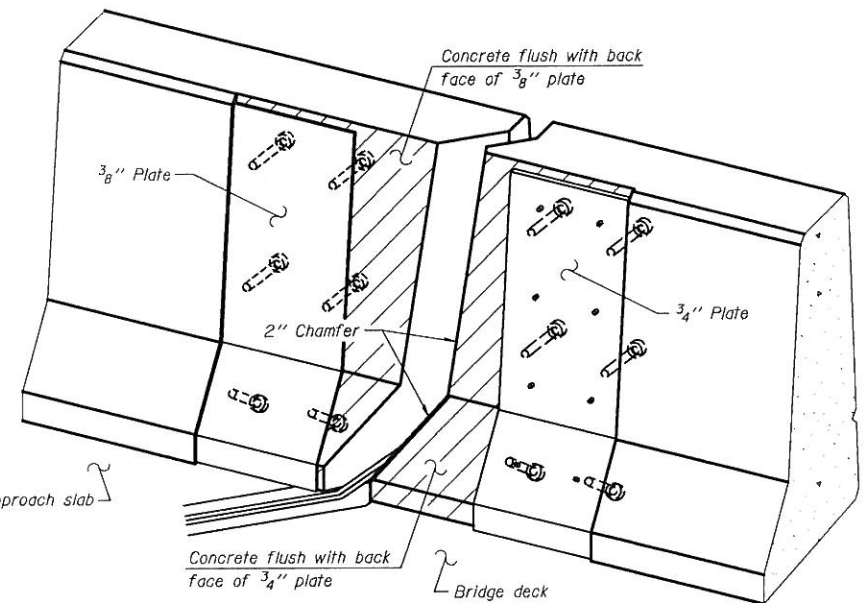
TYPICAL END TREATMENT AT SIDEWALK OR MEDIAN
 Shorter plates with a single row of studs at 12" cts. may be necessary on medians which are shallower than 9". See manufacturer's recommendation.



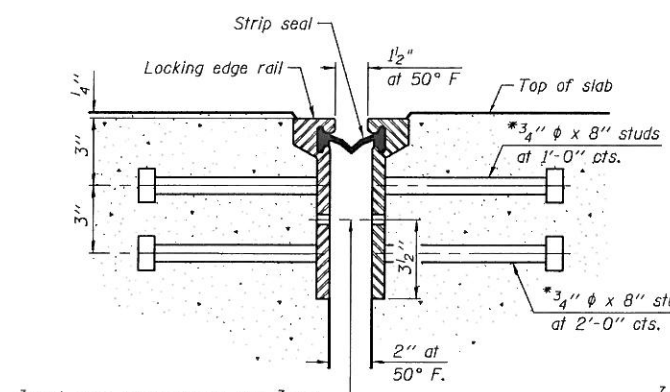
SECTION A-A



SECTION B-B

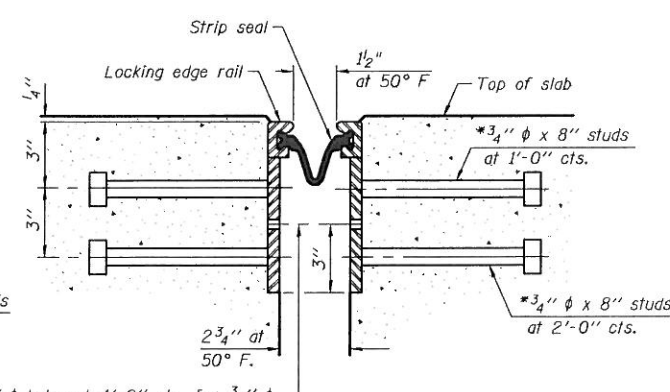


TRIMETRIC VIEW (Showing back plates only)



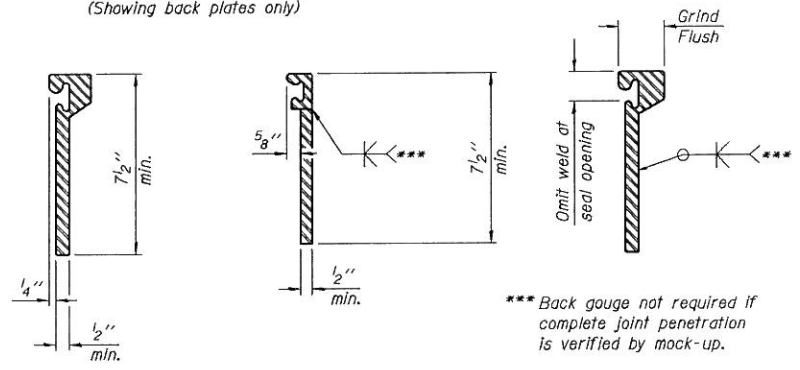
SECTION THRU ROLLED RAIL JOINT

7/16" phi holes at 4'-0" cts. for 3/8" phi bolts. All bolts shall be burned, sawed, or chipped off flush with the plates after forms are removed, typ.



SECTION THRU WELDED RAIL JOINT

* Granular or solid flux filled headed studs conforming to Article 1006.32 of the Std. Specs., automatically end welded.



ROULLED EXTRUDED RAIL

WELDED RAIL

LOCKING EDGE RAIL SPLICE

The inside of the locking edge rail groove shall be free of weld residus. Rolled rail shown, welded rail similar.

LOCKING EDGE RAILS

BILL OF MATERIAL

Item	Unit	Total
Preformed Joint Strip Seal	Foot	233

FILE NAME = I:\102915-Touhy_Ave\Structural\CADD Sheets\160P72-20-1t_strip_seal.dgn

EJ-SSJ 7-1-10



USER NAME = IDOT	DESIGNED - J.C.N./B.N.S.	REVISED -
PLOT SCALE = 49.999968' / IN.	CHECKED - B.N.S./J.C.N.	REVISED -
PLOT DATE = 5/14/2012	DRAWN - F.M.	REVISED -
	DATE - JANUARY 6, 2012	REVISED -

STATE OF ILLINOIS
DEPARTMENT OF TRANSPORTATION

PREFORMED JOINT STRIP SEAL
STRUCTURE NO. 016-0713

SHEET NO. S20 OF S21 SHEETS

F.A.I. RTE.	SECTION	COUNTY	TOTAL SHEETS	SHEET NO.
94	0304, 1 HB-1-2	COOK	44	31
				CONTRACT NO. 60P72
ILLINOIS FED. AID PROJECT				