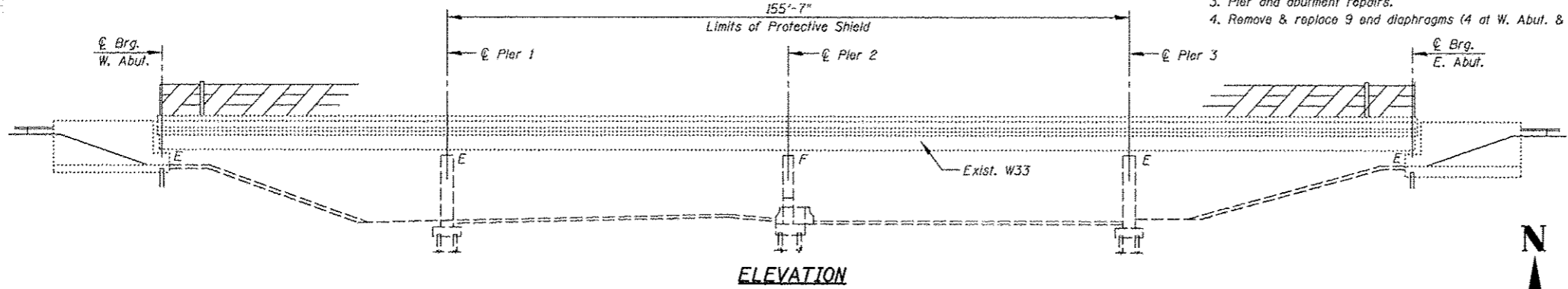
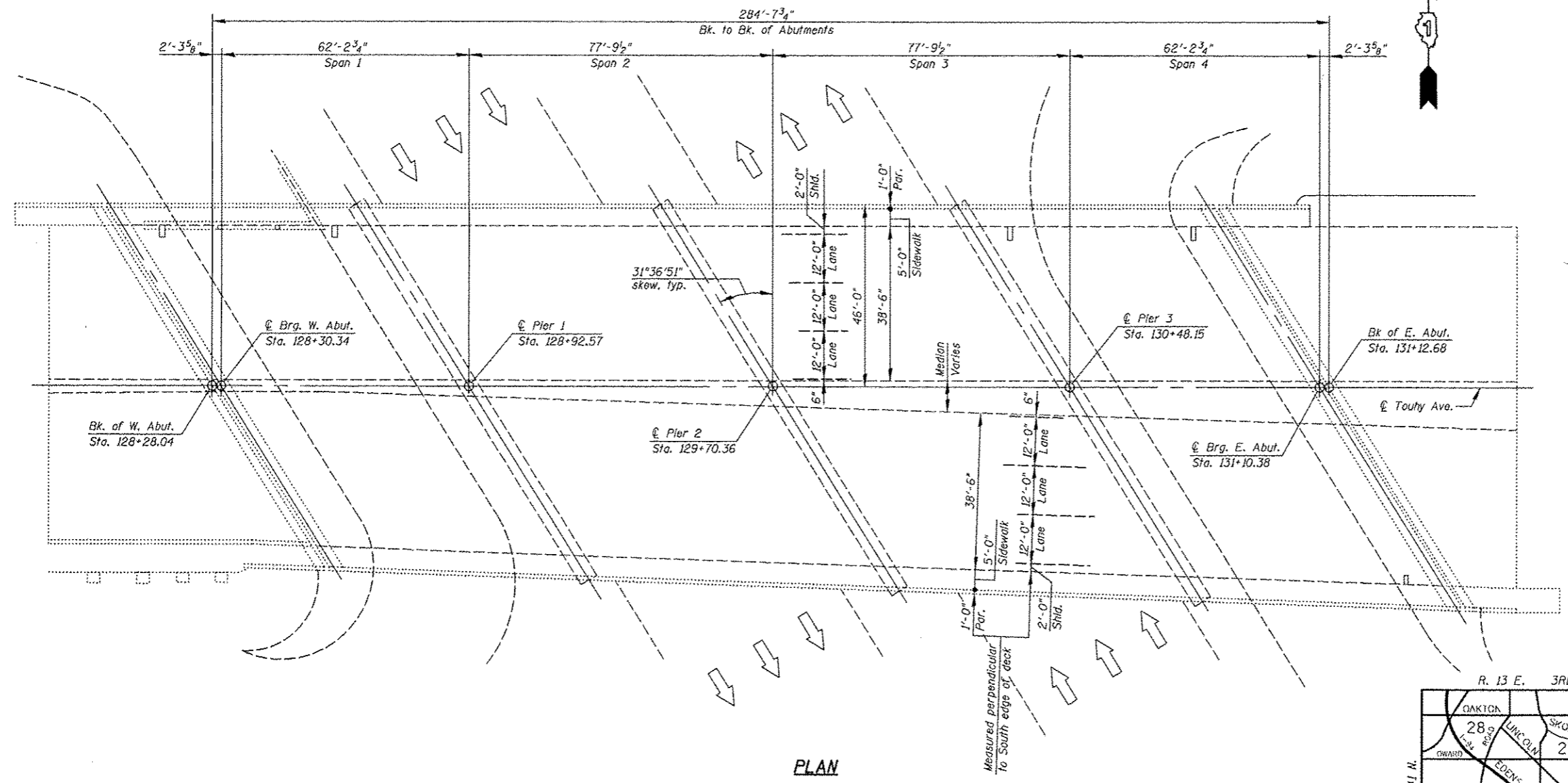


- SCOPE OF WORK:**
1. Expansion Joint removal & replacement at the West and East abutments.
  2. Scarification, full & partial depth deck slab repairs and placement of Thin Polymer Overlay (entire deck).
  3. Pier and abutment repairs.
  4. Remove & replace 9 and diaphragms (4 at W. Abut. & 5 at E. Abut.)

- INDEX OF SHEETS**
- S1 GENERAL PLAN & ELEVATION
  - S2 GENERAL NOTES & TOTAL BILL OF MATERIAL
  - S3 DECK CROSS SECTION
  - S4 DECK CROSS SECTIONS - STAGING
  - S5 DECK PLAN REPAIRS
  - S6 JOINT RECONSTRUCTION DETAILS AT WEST ABUTMENT-I
  - S7 JOINT RECONSTRUCTION DETAILS AT WEST ABUTMENT-II
  - S8 JOINT RECONSTRUCTION DETAILS AT WEST ABUTMENTS-III
  - S9 JOINT RECONSTRUCTION DETAILS AT EAST ABUTMENT-I
  - S10 JOINT RECONSTRUCTION DETAILS AT EAST ABUTMENT-II
  - S11 JOINT RECONSTRUCTION DETAILS AT EAST ABUTMENT-III
  - S12 FRAMING PLAN
  - S13 STRUCTURAL STEEL REPAIRS-WEST ABUTMENT
  - S14 STRUCTURAL STEEL REPAIRS-EAST ABUTMENT
  - S15 WEST & EAST ABUTMENT REPAIRS
  - S16 PIER 1 REPAIRS
  - S17 PIER 2 REPAIRS
  - S18 PIER 3 REPAIRS
  - S19 BAR SPLICER ASSEMBLY AND MECHANICAL SPLICER DETAILS
  - S20 PREFORMED JOINT STRIP SEAL
  - S21 TEMPORARY CONCRETE BARRIER FOR STAGE CONSTRUCTION

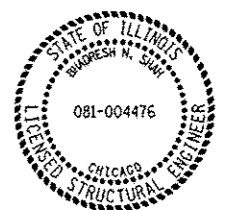
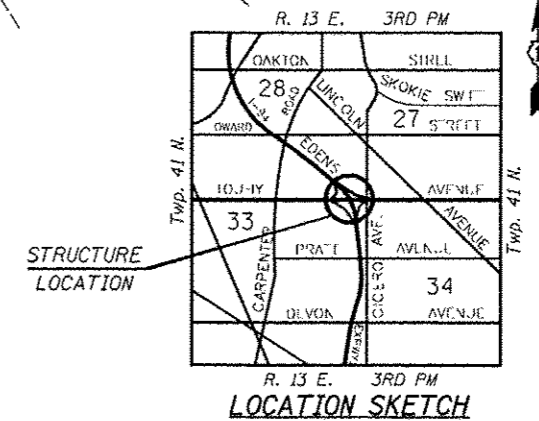


**ELEVATION**



**PLAN**

**DESIGN STRESSES**  
FIELD UNITS  
 $f'_c = 3,500$  psi  
 $f_y = 60,000$  psi (Reinforcement)



*Bhadresh N. Shah*  
BHADRESH N. SHAH  
LICENSED STRUCTURAL ENGINEER  
STATE OF ILLINOIS LIC. No. 081-004476  
EXPIRES: 11-30-12

**GENERAL PLAN & ELEVATION**  
**TOUHY AVENUE OVER**  
**I-94 (EDENS EXPRESSWAY)**  
**SECTION 0304, 1 HB-I-2**  
**COOK COUNTY**  
**STATION 129+70.62**  
**STRUCTURE NO. 016-0713**

FILE NAME = I:\1822915\_Touhy\_Ave\Structure\1\CADD Sheets\160972-01-0PE.dgn

	USER NAME = IDOT	DESIGNED - J.C.N./B.N.S.	REVISED -	<b>STATE OF ILLINOIS</b> <b>DEPARTMENT OF TRANSPORTATION</b>	<table border="1"> <tr> <th>F.A.I. RTE.</th> <th>SECTION</th> <th>COUNTY</th> <th>TOTAL SHEETS</th> <th>SHEET NO.</th> </tr> <tr> <td>94</td> <td>0304, 1 HB-I-2</td> <td>COOK</td> <td>44</td> <td>12</td> </tr> </table>	F.A.I. RTE.	SECTION	COUNTY	TOTAL SHEETS	SHEET NO.	94	0304, 1 HB-I-2	COOK	44	12
	F.A.I. RTE.	SECTION	COUNTY			TOTAL SHEETS	SHEET NO.								
	94	0304, 1 HB-I-2	COOK			44	12								
PLOT SCALE = 49.999968 1/1 IN.	CHECKED - B.N.S./J.C.N.	REVISED -													
PLOT DATE = 5/14/2012	DRAWN - F.M.	REVISED -	CONTRACT NO. 60P72												