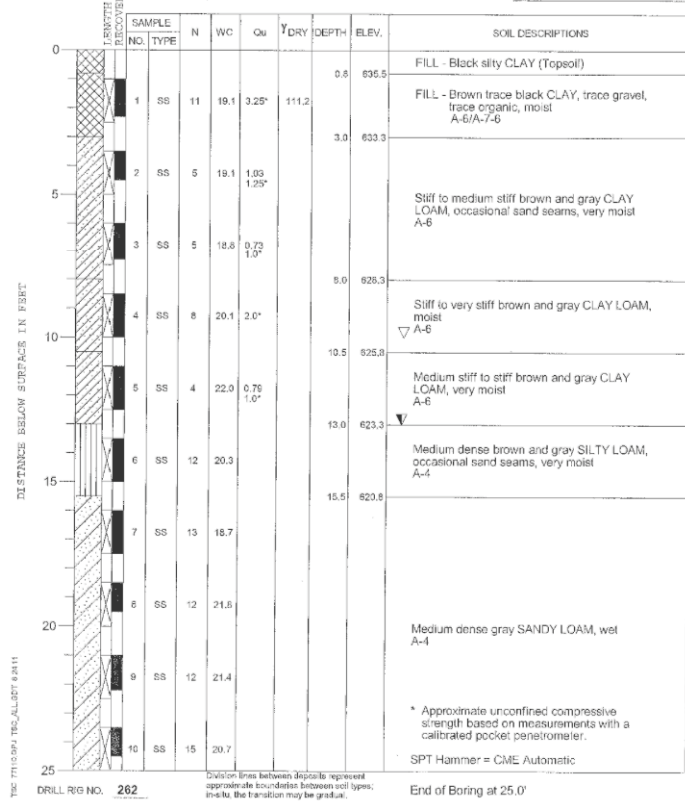
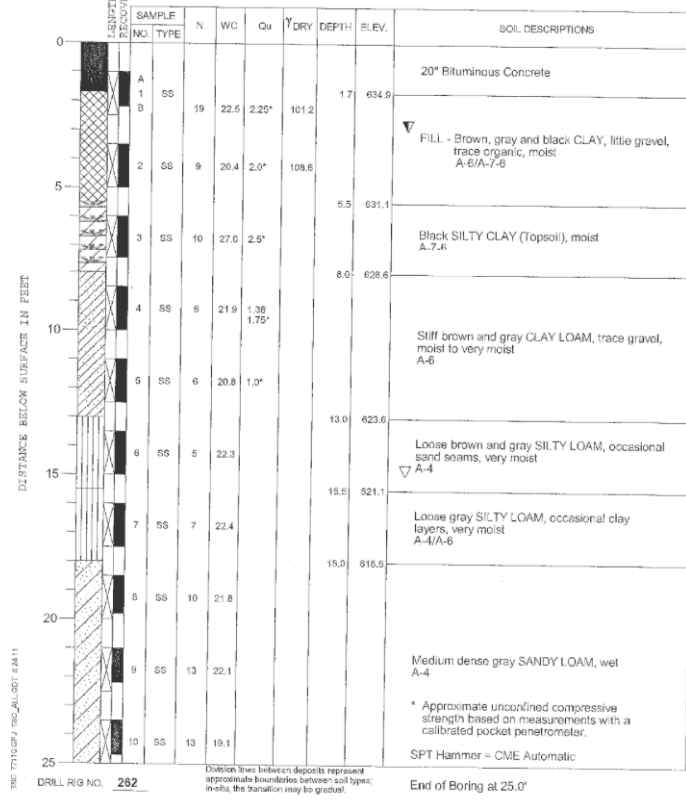


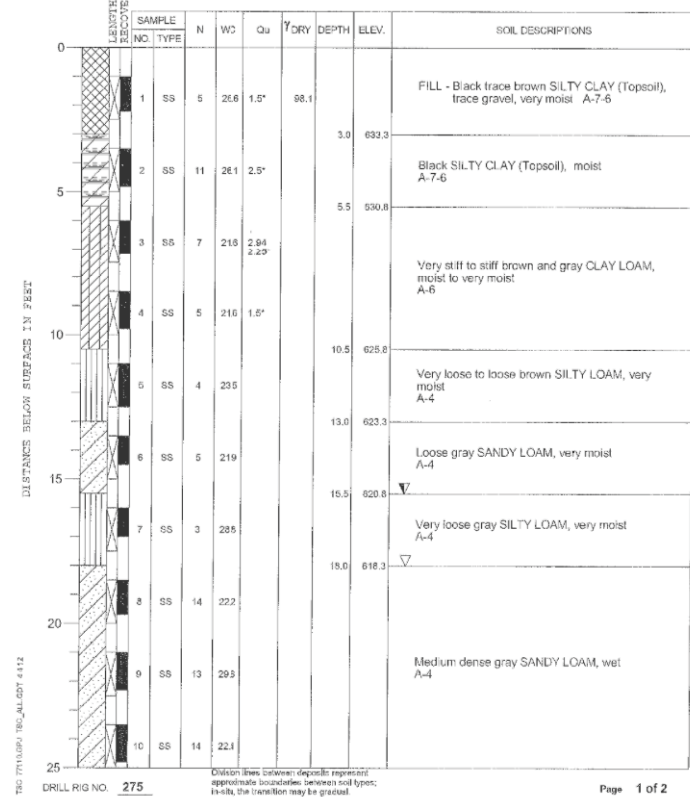
PROJECT **Sewer Sinkhole Repair, I-394 @ US Route 30 Interchange, Ford Heights, IL**
 CLIENT **HR Green, Inc., McHenry, Illinois**
 BORING **1** DATE STARTED **8-4-11** DATE COMPLETED **8-4-11** JOB **L-77,110**
 ELEVATIONS WATER LEVEL OBSERVATIONS
 GROUND SURFACE **636.3** WHILE DRILLING **13.0'**
 END OF BORING **611.3** AT END OF BORING **10.0'**
 Sta. 123+70; 7.1' LT



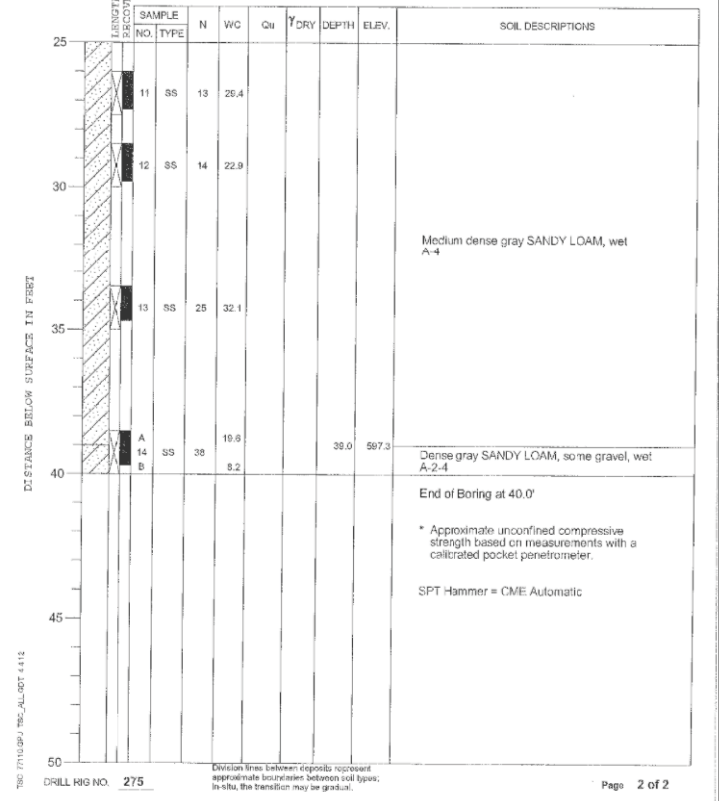
PROJECT **Sewer Sinkhole Repair, I-394 @ US Route 30 Interchange, Ford Heights, IL**
 CLIENT **HR Green, Inc., McHenry, Illinois**
 BORING **2** DATE STARTED **8-4-11** DATE COMPLETED **8-4-11** JOB **L-77,110**
 ELEVATIONS WATER LEVEL OBSERVATIONS
 GROUND SURFACE **636.6** WHILE DRILLING **3.0'**
 END OF BORING **611.6** AT END OF BORING **15.0'**
 Sta. 125+06; 14.6' LT



PROJECT **Cantilever Sign Foundation, I-394 @ US Route 30 Interchange, Ford Heights, IL**
 CLIENT **HR Green, Inc., McHenry, Illinois**
 BORING **101** DATE STARTED **2-17-12** DATE COMPLETED **2-17-12** JOB **L-77,110A**
 ELEVATIONS WATER LEVEL OBSERVATIONS
 GROUND SURFACE **636.3** WHILE DRILLING **15.5'**
 END OF BORING **596.3** AT END OF BORING **18.0'**
 Sta. 124+80; 72.6' LT



PROJECT **Cantilever Sign Foundation, I-394 @ US Route 30 Interchange, Ford Heights, IL**
 CLIENT **HR Green, Inc., McHenry, Illinois**
 BORING **101** DATE STARTED **2-17-12** DATE COMPLETED **2-17-12** JOB **L-77,110A**
 ELEVATIONS WATER LEVEL OBSERVATIONS
 GROUND SURFACE **636.3** WHILE DRILLING **15.5'**
 END OF BORING **596.3** AT END OF BORING **18.0'**
 Sta. 124+80; 72.6' LT



COMPANY NAME: #COMPANY NAME S
 PROJECT CONTACT:
 DATE PLOTTED: 5/17/2012 14:25:35 PM
 FILE NAME: 86100196.11-sol.dgn
 PLOT DRIVER: pdfcut
 PEN TABLE: STruct 22x34.tbl



HRGreen.com
 Illinois Professional Design Firm
 #184-001322
 USER NAME = mhardn
 PLOT SCALE = N/A
 PLOT DATE = 5/17/2012

DESIGNED - J. GUERRIERO
 DRAWN - J. GUERRIERO
 CHECKED - R. DAVIES
 DATE - 5/17/12
 REVISED -
 REVISED -
 REVISED -
 REVISED -

STATE OF ILLINOIS
 DEPARTMENT OF TRANSPORTATION

SOIL BORINGS
 ILLINOIS ROUTE 394

SCALE: N/A SHEET NO. 1 OF 1 SHEETS STA. TO STA.

F.A. RTE.	SECTION	COUNTY	TOTAL SHEETS	SHEET NO.
332	2011-073-T	COOK	44	26
FED. ROAD DIST. NO.			ILLINOIS FED. AID PROJECT	
			CONTRACT NO. 60P93	