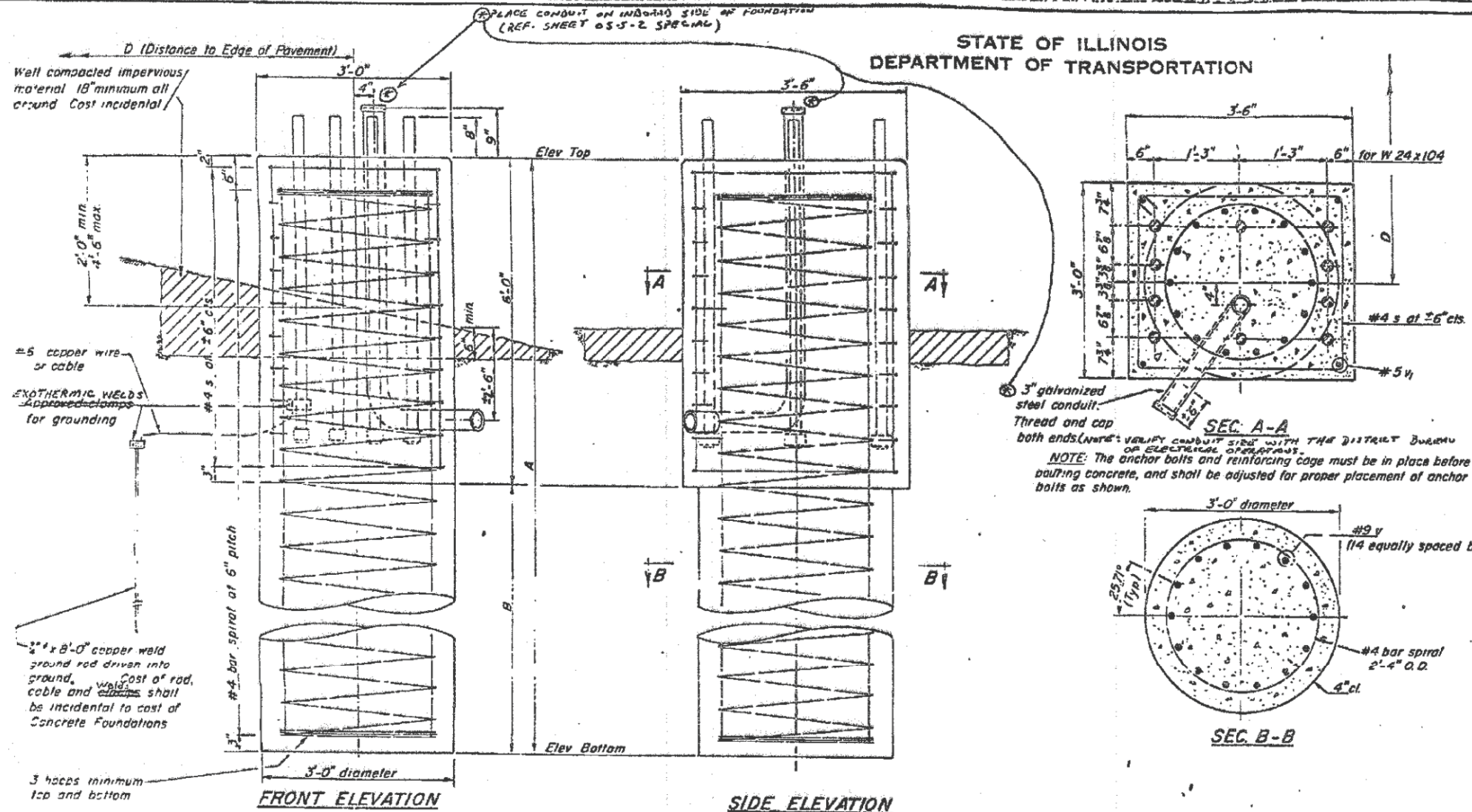
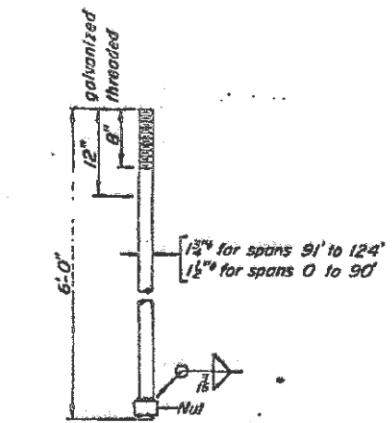


STATE OF ILLINOIS
DEPARTMENT OF TRANSPORTATION

| | | | | | |
|-----------------------|---------|--------|--------------|-----------|-------------|
| STATE NO. | SECTION | COUNTY | TOTAL SHEETS | SHEET NO. | SHEET NO. 5 |
| A 332 | * | COOK | 144 | 79 | SHEETS 8 |
| * 03031 & 0303.1 BR-1 | | | | | |



NOTES:
The foundation details shown are for Average Cohesive Soil Conditions (stiff clays, sandy clays) and with minimum $Q_u = 1.0$ Tons/Sq Ft. " Q_u " being the average value of hand penetrometer readings at various depths of the shaft as determined by the Engineer at time of drilling operations or previous soil investigation.
REINFORCING STEEL SHALL BE INTERCONNECTED TO THE ANCHOR BOLTS VIA TIE WRAPPING OR OTHER SUITABLE MEANS AS APPROVED BY THE DISTRICT BUREAU OF ELECTRICAL OPERATIONS.

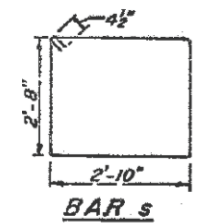


ANCHOR BOLT DETAILS
(ASTM A-576 $F_y = 55,000$ psi.)
Galvanize upper 12" in accordance with AASHTO M 232.
Provide 3 nuts and 1 washer for each anchor bolt.

BAR LIST - EACH FOUNDATION

| Bar | No | Size | Lnth | Shape |
|-----|----|------|---------|-------|
| s | 12 | #4 | 11'-9" | □ |
| v | 14 | #9 | 8'-5.7" | — |
| w | 4 | #5 | 5'-3" | — |

#4 bar spirals - see Front Elevation



DEPTH TABLE

| Span | B (min.) |
|------|----------|
| 70' | 15' |
| 80' | 15' |
| 90' | 16' |
| 100' | 17' |
| 110' | 18' |
| 124' | 20' |

| Structure No. | Station | B | Anchor Bolt Size | Left Foundation | | | Right Foundation | | | Class X Concrete |
|---------------|---------|-----|------------------|-----------------|------------|-----|------------------|------------|-----|------------------|
| | | | | Elev. Top | Elev. Btm. | A | Elev. Top | Elev. Btm. | A | |
| TS-1 | 318+20 | 18' | 1 1/2" φ | 655.00 | 633.00 | 21' | 655.00 | 634.00 | 21' | 12.62 CY |
| TS-1 | 277+45 | 18' | 1 1/2" φ | | | | 638.00 | 617.00 | 21' | 6.26 CY |
| | | | | | | | | | | |
| | | | | | | | | | | |
| | | | | | | | | | | |
| | | | | | | | | | | |
| | | | | | | | | | | |
| | | | | | | | | | | |

NOTE: ELEVATIONS ARE ESTIMATES ONLY.

DRILLED SHAFT
FOUNDATION DETAILS

OVERHEAD SIGN STRUCTURES
FOUNDATION DETAILS
FOR INFORMATION ONLY

| | |
|----------|----------|
| DESIGNED | EXAMINED |
| CHECKED | PASSED |
| DRAWN | APPROVED |
| CHECKED | |

OS-S-5-SPECIAL

COMPANY NAME: HRGreen
PROJECT CONTACT: HRGreen
DATE PLOTTED: 5/17/2012 14:48:22 PM
FILE NAME: 86100196.11-081-07.dgn
PLOT DRIVER: default
PEN TABLE: Struct 22x34.tbl



| | | |
|-----------------------|-------------------------|-----------|
| USER NAME = mhardin | DESIGNED - J. GUERRIERO | REVISED - |
| PLOT SCALE = N/A | DRAWN - J. GUERRIERO | REVISED - |
| PLOT DATE = 5/17/2012 | CHECKED - R. DAVIES | REVISED - |
| | DATE - 5/17/12 | REVISED - |

STATE OF ILLINOIS
DEPARTMENT OF TRANSPORTATION

| | | |
|------------|-------------------------|--------------|
| SCALE: N/A | SHEET NO. 5 OF 6 SHEETS | STA. TO STA. |
|------------|-------------------------|--------------|

| | | | | |
|--------------------|--------------------|-------------|---|--------------|
| F.A. RTE. 332 | SECTION 2011-073-T | COUNTY COOK | TOTAL SHEETS 44 | SHEET NO. 31 |
| CONTRACT NO. 60P93 | | | FED. ROAD DIST. NO. ILLINOIS FED. AID PROJECT | |