

F.A.P. RTE.	SECTION	COUNTY	TOTAL SHEETS	SHEET NO.
--	2012-004 I	LAKE	97	1
		ILLINOIS	CONTRACT NO. 60T42	

STATE OF ILLINOIS
DEPARTMENT OF TRANSPORTATION
DIVISION OF HIGHWAYS

FOR INDEX OF SHEETS, SEE SHEET NO. 2

PROPOSED
HIGHWAY PLANS

VARIOUS LOCATIONS IN NORTHEAST LAKE COUNTY
LIGHT EMITTING DIODE (LED) INSTALLATION

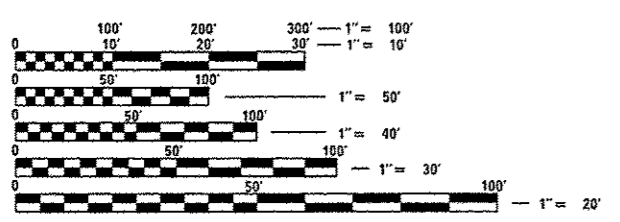
SECTION 2012-004 I
LAKE COUNTY

C-91-350-12



HIGHWAY STANDARDS

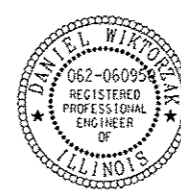
- 701006-03 OFF-ROAD OPERATIONS 2L, 2W, 15' (4.5 m) TO 24" (600 mm) FROM PAVEMENT EDGE
- 701101-02 OFF-ROAD OPERATIONS MULTILANE, 15' (4.5 m) TO 24" (600 mm) FROM PAVEMENT EDGE
- 701701-08 URBAN LANE CLOSURE MULTILANE INTERSECTION
- 701901-02 TRAFFIC CONTROL DEVICES
- 720001-01 SIGN PANEL MOUNTING DETAIL
- 720006-03 SIGN PANEL ERECTION DETAILS
- 857001-01 STANDARD PHASE DESIGNATION DIAGRAMS AND PHASE SEQUENCES
- 862001-01 UNINTERRUPTABLE POWER SUPPLY (UPS)
- 880001-01 SPAN WIRE MOUNTED SIGNALS AND FLASHING BEACON INSTALLATION
- 880006-01 TRAFFIC SIGNAL MOUNTING DETAILS



FULL SIZE PLANS HAVE BEEN PREPARED USING STANDARD ENGINEERING SCALES. REDUCED SIZED PLANS WILL NOT CONFORM TO STANDARD SCALES. IN MAKING MEASUREMENTS ON REDUCED PLANS, THE ABOVE SCALES MAY BE USED.

J.U.L.I.E.
 JOINT UTILITY LOCATION INFORMATION FOR EXCAVATION
 1-800-892-0123
 OR 811

LAKE COUNTY
 LOCATION MAP
 SEE SHEET NO. 3



Signed *Daniel Wirtorzak*
 DANIEL WIRTORZAK, P.E., IL Lic. No. 062-060958
 Expires 11-30-2013
 Date 05/18/11

STATE OF ILLINOIS
 DEPARTMENT OF TRANSPORTATION
 DIVISION OF HIGHWAYS

SUBMITTED May 18 2012
Sam M. Allen
 DEPUTY DIRECTOR OF HIGHWAYS, REGION ENGINEER

June 29 2012
John D. Baranzelli, P.E.
 acting ENGINEER OF DESIGN AND ENVIRONMENT

June 29 2012
William R. Freyer
 acting DIRECTOR OF HIGHWAYS, CHIEF ENGINEER

PROJECT ENGINEER: SUDUD MAHMOUD
PROJECT MANAGER: DARYLE DREW

CONTRACT NO. 60T42

CIVIL ENGINEERING CONSULTANTS
RWA
 Regina Webster & Associates, Inc.
 8619 W. Bryn Mawr Ave., Suite 602
 Chicago, IL 60631-3551
 773-283-2600 Fax: 773-283-2602
 www.RWAengineers.com

PRINTED BY THE AUTHORITY
OF THE STATE OF ILLINOIS