

08-03-12 LETTING ITEM 029

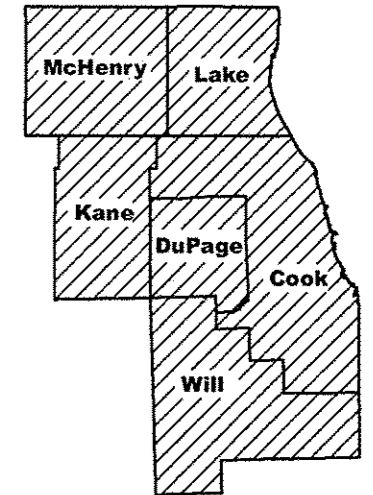
ROUTE	SECTION	COUNTY	TOTAL SHEETS	SHEET NUMBER
VARIOUS	2012-0051	VARIOUS	19	1

FOR INDEX OF SHEETS SEE SHEET 2

CONTRACT 60T45
D-91-357-12

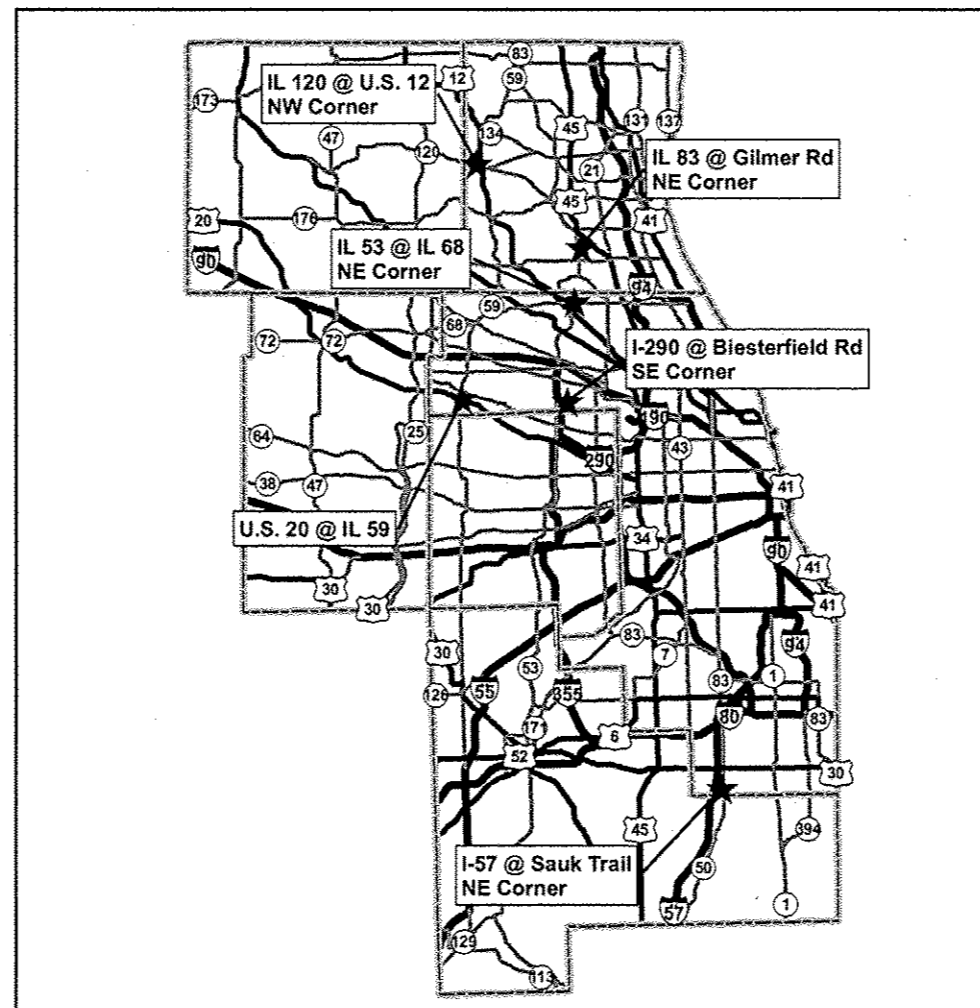
STATE OF ILLINOIS
DEPARTMENT OF TRANSPORTATION
DIVISION OF HIGHWAYS
DISTRICT ONE
PROPOSED HIGHWAY PLANS

VARIOUS LOCATIONS
SECTION 2012-0051
NATURAL AREAS MANAGEMENT
VARIOUS COUNTIES
C-91-357-12



**IMPROVEMENT IS IN VARIOUS
LOCATIONS WITHIN DISTRICT
ONE**

LOCATION OF IMPROVEMENT INDICATED THUS:



STATE OF ILLINOIS
DEPARTMENT OF TRANSPORTATION
DIVISION OF HIGHWAYS

SUBMITTED: MAY 29, 2012
Diana M. O'Keefe
DISTRICT ENGINEER

June 29, 2012
John D. Baranzelli PE Ia
acting ENGINEER OF DESIGN AND ENVIRONMENT

June 29, 2012
William B. Frey Ia
acting DIRECTOR, DIVISION OF HIGHWAYS

**PRINTED BY THE AUTHORITY
OF THE STATE OF ILLINOIS**

J.U.L.I.E.: JOINT UTILITY LOCATION
INFORMATION FOR EXCAVATION
(800) 892-0123

DISTRICT ONE BUREAU OF MAINTENANCE
MAINTENANCE DESIGN ENGINEER: R. WANNERT, JACKSON

CONTRACT NO. 60T45

ROUTE	SECTION	COUNTY	TOTAL SHEETS	SHEET NUMBER
VARIOUS	2012-0051	VARIOUS	19	2

CONTRACT 60T45

INDEX OF SHEETS

- 1) COVER SHEET
- 2) INDEX OF SHEETS, STATE STANDARDS
- 3) SUMMARY OF QUANTITIES
- 4) SUMMARY OF QUANTITIES, GENERAL NOTES
- 5) SAMPLE WORK ORDER
- 6) WEED CONTROL PLAN - IL RTE 120 & U.S. RTE 12 - NW CORNER
- 7) SEEDING PLAN - IL RTE 120 & U.S. RTE 12 - NW CORNER
- 8) WEED CONTROL PLAN - IL RTE 83 & GILMER RD - NE CORNER
- 9) SEEDING PLAN - IL RTE 83 & GILMER RD - NE CORNER
- 10) CONTROL BURN PLAN - IL RTE 83 & GILMER RD - NE CORNER
- 11) WEED CONTROL PLAN - IL RTE 53 & IL RTE 68 - NE CORNER
- 12) SEEDING PLAN - IL RTE 53 & IL RTE 68 - NE CORNER
- 13) WEED CONTROL PLAN - I-290 & BIESTERFIELD RD - SE CORNER
- 14) SEEDING/PLANTING PLAN - I-290 & BIESTERFIELD RD - SE CORNER
- 15) WEED CONTROL PLAN - U.S. RTE 20 & IL RTE 59
- 16) SEEDING PLAN - U.S. RTE 20 & IL RTE 59
- 17) WEED CONTROL PLAN - I-57 & SAUK TRAIL - NE CORNER
- 18) SEEDING PLAN - I-57 & SAUK TRAIL - NE CORNER
- 19) TC-17 TRAFFIC CONTROL FOR FREEWAY SHOULDER CLOSURES AND PARTIAL RAMP CLOSURES

STATE STANDARDS

701001-02	701006-03	701101-02	701106-02
701201-04	701301-04	701421-04	701501-06
	701601-07	701901-02	

ILLINOIS DEPARTMENT OF TRANSPORTATION
 NATURAL AREAS MANAGEMENT
 INDEX OF SHEETS

Rev.

SYMS 2 6 MID

ROUTE	SECTION	COUNTY	TOTAL SHEETS	SHEET NUMBER
VARIOUS	2012-005 I	VARIOUS	19	3

SUMMARY OF QUANTITIES

0031
100% STATE
CONTRACT
MAINT FUND
URBAN

CONTRACT 60T45

CODE NO.	ITEM	UNIT	TOTAL QUANTITY	URBAN
20100110	TREE REMOVAL (6 TO 15 UNITS DIAMETER)	UNIT	255	255
20100210	TREE REMOVAL (OVER 15 UNITS DIAMETER)	UNIT	49	49
21101610	TOPSOIL FURNISH AND PLACE, 3"	SQ YD	3419	3419
25000750	MOWING	ACRE	50	50
25100630	EROSION CONTROL BLANKET	SQ YD	3419	3419
67100100	MOBILIZATION	L SUM	1	1
K0013030	PERENNIAL PLANTS, WETLAND TYPE, 2" DIAMETER BY 4" DEEP PLUG	UNIT	13	13
K0029614	WEED CONTROL, AQUATIC	GALLON	12	12
K0029624	WEED CONTROL, TEASEL	GALLON	18	18
X0325222	WEED CONTROL, BASAL TREATMENT	GALLON	61	61
X2010300	TREE REMOVAL (UNDER 6 UNITS DIAMETER)	UNIT	180	180
X2500500	INTERSEEDING, CLASS 4 (SPECIAL)	ACRE	11.78	11.78
X2501800	SEEDING, CLASS 4 (MODIFIED)	ACRE	0.71	0.71
XX008487	CONTROL BURN	ACRE	24.5	24.5

ILLINOIS DEPARTMENT OF TRANSPORTATION
NATURAL AREAS MANAGEMENT
SUMMARY OF QUANTITIES

ROUTE	SECTION	COUNTY	TOTAL SHEETS	SHEET NUMBER
VARIOUS	2012-005 I	VARIOUS	19	4

SUMMARY OF QUANTITIES

CODE NO.	ITEM	UNIT	TOTAL QUANTITY	0031	
				100% STATE CONTRACT MAINT FUND	URBAN
Z0064800	SELECTIVE CLEARING	UNIT	90	90	
X2503318	INTERSEEDING, CLASS 4B (MODIFIED)	ACRE	7.14	7.14	

CONTRACT 60T45

GENERAL NOTES

- Engineer may provide IDOT purchased herbicide to be tank mixed at no additional cost to the Department.
- Random spot check inspections by the Engineer will occur to verify weed control calibration rates.
- Perennial plants shall be installed as directed by the Engineer with 7 day notice to Contractor.
- Interseeding, Class 4B (Modified) will be mechanically drilled during winter months when planting surface is frozen, or as directed by Engineer.
- Seeding, Class 4 (Modified) shall be performed after placement of Pay Item-Top Soil, Furnish and Place, 3" and before placement of Pay Item-Erosion Control Blanket, or as directed by the Engineer.

ILLINOIS DEPARTMENT OF TRANSPORTATION
NATURAL AREAS MANAGEMENT
SUMMARY OF QUANTITIES
GENERAL NOTES

ROUTE	SECTION	COUNTY	TOTAL SHEETS	SHEET NUMBER
VARIOUS	2012-005 I	VARIOUS	19	5

CONTRACT 60T45

SAMPLE WORK ORDER



Illinois Department of Transportation

Contract Number: _____
 Weed Control Work Order #: _____
 Route: _____

Standard 30-day application	Specialized 10-Day Priority
-----------------------------	-----------------------------

Cook	DuPage	Kane	Work Order Prepared By	Team Section
Lake	McHenry	Will		

Location: _____

Special Instructions:
 Refer to contract plan sheets, which are hereby made a part of this work order (_____ sheets)

WORK INCLUDED IN THIS WORK ORDER			
Pay Item	Est. Map Qty.	Priority Multiplier	Est. Work Order Qty.
20100110 - Tree Removal (6 to 15 Units Diameter)	units		units
20100210 - Tree Removal (Over 15 Units Diameter)	units		units
21101610 - Topsoil Furnish and Place, 3"	Sq Yd		Sq Yd
25000750 - Mowing	acres		acres
25100630 - Erosion Control Blanket	Sq Yd		Sq Yd
K0013030 - Perennial Plants, Wetland Type, 2X4 Plug	units		units
K0029614 - Weed Control, Aquatic	acres gallons		acres gallons
K0029624 - Weed Control, Teasel	acres gallons		acres gallons
X0325222 - Weed Control, Basal Treatment	acres gallons		acres gallons
X2010300 - Tree Removal (Under 6 Units Diameter)	units		units
X2500500 - Interseeding, Class 4 (Special)	acre		acre
X2501800 - Seeding, Class 4 (Modified)	acre		acre
XX08487 - Control Burn	acre		acre
Z0064800 - Selective Clearing	unit		unit

AUTHORIZATION OF WORK ORDER

Resident Engineer/Technician Signature _____ Date/Time _____

Contractor Signature (to acknowledge receipt) _____ Date/Time _____

APPROVED PERSONNEL (RE USE ONLY)

Name	License Number

CERTIFICATION OF COMPLETION

Contractor Signature _____ Date/Time _____

ACCEPTANCE OF COMPLETED WORK

Resident Engineer/Technician Signature _____ Date/Time _____

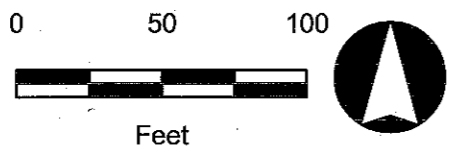
ILLINOIS DEPARTMENT OF TRANSPORTATION
 NATURAL AREAS MANAGEMENT
 SAMPLE WORK ORDER

	ROUTE	SECTION	COUNTY	TOTAL SHEETS	SHEET NUMBER
	VARIOUS	2012-005 I	VARIOUS	19	6

CONTRACT 60T45



SITE LOCATION
 NW CORNER
 IL RTE 120 & US RTE 12
 TEAM SECTION:
 117 - WOODSTOCK



LEGEND

	WEED CONTROL, AQUATIC
	WEED CONTROL, TEASEL
	SELECTIVE CLEARING
	TREE REMOVAL

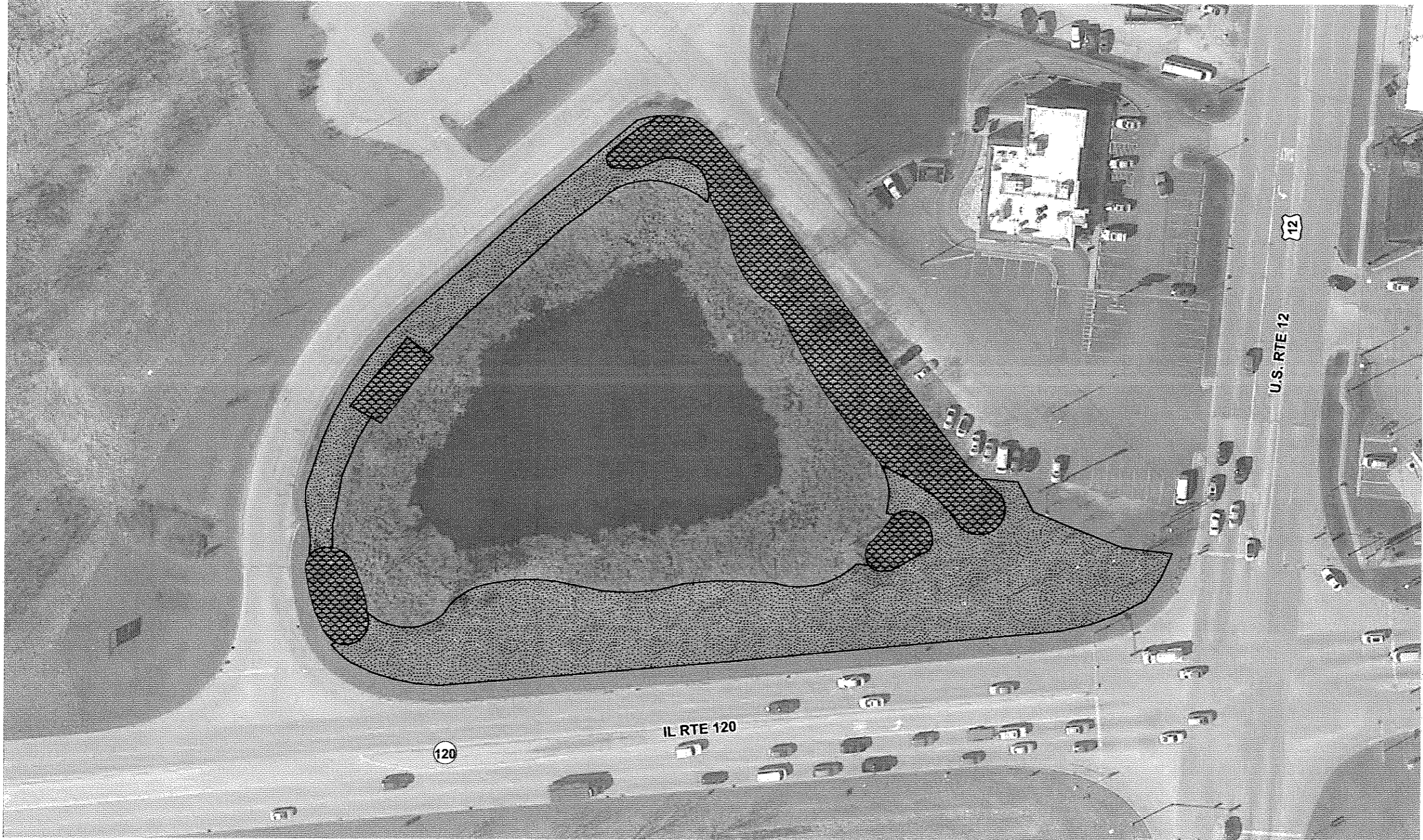
SUMMARY OF QUANTITIES FOR SHEET 6

PAY ITEM #	DESCRIPTION	UNIT	QUANTITY
20100110	TREE REMOVAL (6 TO 15 UNITS DIAMETER)	UNIT	70
20100210	TREE REMOVAL (OVER 15 UNITS DIAMETER)	UNIT	19
K0029614	WEED CONTROL, AQUATIC	GAL	0.02
K0029624	WEED CONTROL, TEASEL	GAL	0.04
X0325222	WEED CONTROL, BASAL TREATMENT	GAL	5
X2010300	TREE REMOVAL (UNDER 6 UNITS DIAMETER)	UNIT	20
Z0064800	SELECTIVE CLEARING	UNIT	30

ILLINOIS DEPARTMENT OF TRANSPORTATION
 NATURAL AREAS MANAGEMENT
 WEED CONTROL PLAN

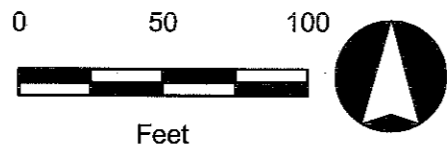
	ROUTE	SECTION	COUNTY	TOTAL SHEETS	SHEET NUMBER
	VARIOUS	2012-005 I	VARIOUS	19	7

CONTRACT 60T45



SITE LOCATION
 NW CORNER
 IL RTE 120 & US RTE 12

TEAM SECTION:
 117 - WOODSTOCK



LEGEND

	SEEDING, CL 4 (MOD)
	INTERSEEDING, CL 4 (SPECIAL)

SUMMARY OF QUANTITIES FOR SHEET 7

PAY ITEM #	DESCRIPTION	UNIT	QUANTITY
25100630	EROSION CONTROL BLANKET	SQ YD	1825
21101610	TOP SOIL, FURNISH & PLACE, 3"	SQ YD	1825
X2500500	INTERSEEDING, CLASS 4 (SPECIAL)	ACRE	0.82
X2501800	SEEDING, CLASS 4 (MODIFIED)	ACRE	0.38

ILLINOIS DEPARTMENT OF TRANSPORTATION
NATURAL AREAS MANAGEMENT

SEEDING PLAN

	ROUTE	SECTION	COUNTY	TOTAL SHEETS	SHEET NUMBER
	VARIOUS	2012-005 I	VARIOUS	19	8

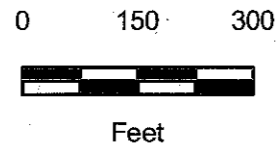
CONTRACT 60T45






SITE LOCATION

IL RTE 83
AT GILMER RD

TEAM SECTION:
115 - GRAYSLAKE



LEGEND

-  WEED CONTROL, AQUATIC
-  WEED CONTROL, TEASEL
-  WEED CONTROL, BASAL TREATMENT

SUMMARY OF QUANTITIES FOR SHEET 8

PAY ITEM #	DESCRIPTION	UNIT	QUANTITY
K0029614	WEED CONTROL, AQUATIC	GAL	3.36
K0029624	WEED CONTROL, TEASEL	GAL	6.35
X0325222	WEED CONTROL, BASAL TREATMENT	GAL	36

ILLINOIS DEPARTMENT OF TRANSPORTATION
NATURAL AREAS MANAGEMENT

WEED CONTROL PLAN

	ROUTE	SECTION	COUNTY	TOTAL SHEETS	SHEET NUMBER
	VARIOUS	2012-005 I	VARIOUS	19	9

CONTRACT 60T45



SITE LOCATION

IL RTE 83
AT GILMER RD

TEAM SECTION:
115 - GRAYSLAKE


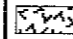
0 150 300



Feet



LEGEND

-  INTERSEEDING, CL 4 (SPECIAL)
-  INTERSEEDING, CL 4B (MOD)

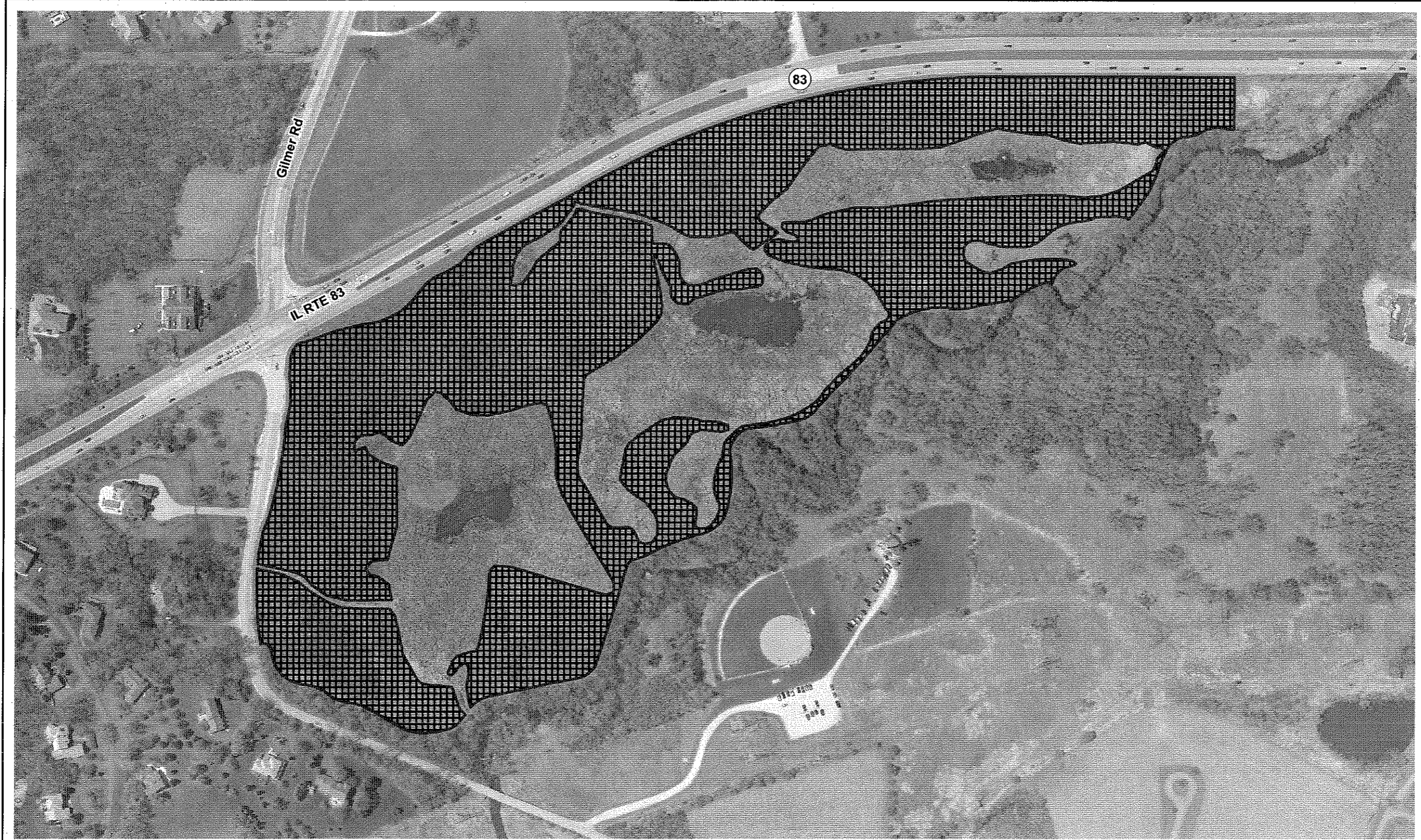
SUMMARY OF QUANTITIES FOR SHEET 9

PAY ITEM #	DESCRIPTION	UNIT	QUANTITY
X2500500	INTERSEEDING, CLASS 4 (SPECIAL)	ACRE	6.35
	INTERSEEDING, CLASS 4B (MODIFIED)	ACRE	6.71

ILLINOIS DEPARTMENT OF TRANSPORTATION
NATURAL AREAS MANAGEMENT

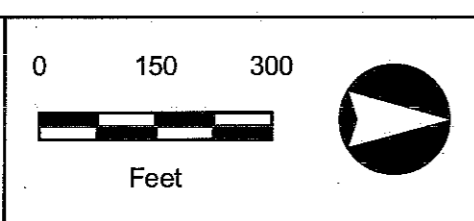
SEEDING PLAN

	ROUTE	SECTION	COUNTY	TOTAL SHEETS	SHEET NUMBER
	VARIOUS	2012-005 I	VARIOUS	19	10



CONTRACT 60T45

SITE LOCATION
 IL RTE 83
 AT GILMER RD.
 TEAM SECTION:
 115 - GRAYSLAKE



LEGEND

	CONTROL BURN
--	--------------

SUMMARY OF QUANTITIES FOR SHEET 10

PAY ITEM #	DESCRIPTION	UNIT	QUANTITY
XX008487	CONTROL BURN	ACRE	24.5

ILLINOIS DEPARTMENT OF TRANSPORTATION
 NATURAL AREAS MANAGEMENT
 CONTROL BURN PLAN

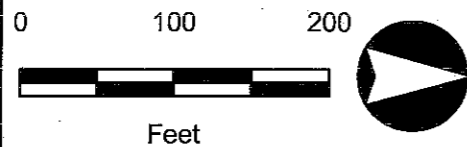
ROUTE	SECTION	COUNTY	TOTAL SHEETS	SHEET NUMBER
VARIOUS	2012-005 I	VARIOUS	19	11

CONTRACT 60T45



SITE LOCATION
NE QUAD
IL RTE 53 & IL RTE 68

TEAM SECTION:
E14 - RODENBURG



LEGEND

	WEED CONTROL, AQUATIC
	WEED CONTROL, TEASEL
	SELECTIVE CLEARING
	TREE REMOVAL

SUMMARY OF QUANTITIES FOR SHEET 11

PAY ITEM #	DESCRIPTION	UNIT	QUANTITY
20100110	TREE REMOVAL (6 TO 15 UNITS DIAMETER)	UNIT	105
K0029614	WEED CONTROL, AQUATIC	GAL	0.2
K0029624	WEED CONTROL, TEASEL	GAL	0.16
X0325222	WEED CONTROL, BASAL TREATMENT	GAL	5
X2010300	TREE REMOVAL (UNDER 6 UNITS DIAMETER)	UNIT	30
Z0064800	SELECTIVE CLEARING	UNIT	30

ILLINOIS DEPARTMENT OF TRANSPORTATION
NATURAL AREAS MANAGEMENT

WEED CONTROL PLAN

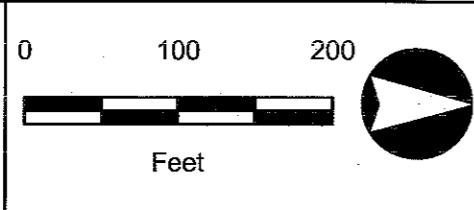
ROUTE	SECTION	COUNTY	TOTAL SHEETS	SHEET NUMBER
VARIOUS	2012-005 I	VARIOUS	19	12



CONTRACT 60T45

SITE LOCATION
NE QUAD
IL RTE 53 & IL RTE 68

TEAM SECTION:
E14 - RODENBURG



LEGEND

	SEEDING, CL 4 (MOD)
	INTERSEEDING, CL 4 (SPECIAL)
	INTERSEEDING, CL 4B (MOD)

SUMMARY OF QUANTITIES FOR SHEET 12

PAY ITEM #	DESCRIPTION	UNIT	QUANTITY
21101610	TOPSOIL, FURNISH AND PLACE 3"	SQ YD	1594
25100630	EROSION CONTROL BLANKET	SQ YD	1594
X2500500	INTERSEEDING, CLASS 4 (SPECIAL)	ACRE	1.16
X2501800	SEEDING, CLASS 4 (MODIFIED)	ACRE	0.33
	INTERSEEDING, CLASS 4B (MODIFIED)	ACRE	0.4

ILLINOIS DEPARTMENT OF TRANSPORTATION
NATURAL AREAS MANAGEMENT

SEEDING PLAN

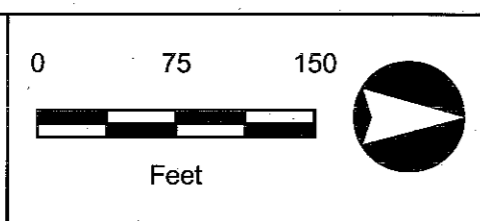
	ROUTE	SECTION	COUNTY	TOTAL SHEETS	SHEET NUMBER
	VARIOUS	2012-005.1	VARIOUS	19	13



CONTRACT 60T45

SITE LOCATION
 I-290 AT
 BIESTERFIELD RD

TEAM SECTION:
 E14 - RODENBURG



LEGEND

	WEED CONTROL, AQUATIC
	WEED CONTROL, TEASEL

SUMMARY OF QUANTITIES FOR SHEET 13

PAY ITEM #	DESCRIPTION	UNIT	QUANTITY
K0029614	WEED CONTROL, AQUATIC	GAL	0.14
K0029624	WEED CONTROL, TEASEL	GAL	1.2

ILLINOIS DEPARTMENT OF TRANSPORTATION
 NATURAL AREAS MANAGEMENT

 WEED CONTROL PLAN

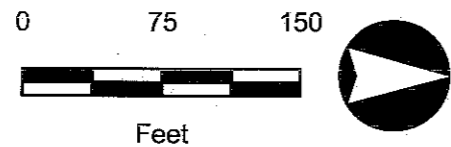
	ROUTE	SECTION	COUNTY	TOTAL SHEETS	SHEET NUMBER
	VARIOUS	2012-005 I	VARIOUS	19	14

CONTRACT 60T45


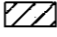


SITE LOCATION
 I-290 AT
 BIESTERFIELD RD

TEAM SECTION:
 E14 - RODENBURG



LEGEND

	INTERSEEDING, CL 4 (SPECIAL)
	PERENNIAL PLANTS, WETLAND TYPE

SUMMARY OF QUANTITIES FOR SHEET 14

PAY ITEM #	DESCRIPTION	UNIT	QUANTITY
K0013030	PERENNIAL PLANTS, WETLAND TYPE, 2 X 4 PLUG	UNIT	13
X2500500	INTERSEEDING, CLASS 4 (SPECIAL)	ACRE	1.2

ILLINOIS DEPARTMENT OF TRANSPORTATION
 NATURAL AREAS MANAGEMENT

 SEEDING/PLANTING PLAN

	ROUTE	SECTION	COUNTY	TOTAL SHEETS	SHEET NUMBER
	VARIOUS	2012-005 I	VARIOUS	19	15

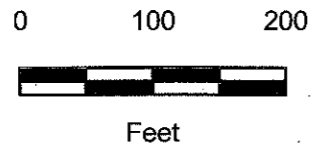
CONTRACT 60T45





SITE LOCATION

U.S RTE 20
& IL RTE 59

TEAM SECTION:
E14 - RODENBURG



LEGEND

-  WEED CONTROL, AQUATIC
-  WEED CONTROL, TEASEL

SUMMARY OF QUANTITIES FOR SHEET 15

PAY ITEM #	DESCRIPTION	UNIT	QUANTITY
K0029614	WEED CONTROL, AQUATIC	GAL	0.09
K0029624	WEED CONTROL, TEASEL	GAL	1.0
X0325222	WEED CONTROL, BASAL TREATMENT	GAL	10

ILLINOIS DEPARTMENT OF TRANSPORTATION
NATURAL AREAS MANAGEMENT

WEED CONTROL PLAN

	ROUTE	SECTION	COUNTY	TOTAL SHEETS	SHEET NUMBER
	VARIOUS	2012-005 I	VARIOUS	19	16

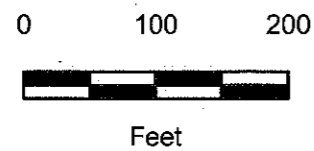


CONTRACT 60T45


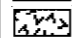
SITE LOCATION

U.S RTE 20
& IL RTE 59

TEAM SECTION:
E14 - RODENBURG



LEGEND

-  INTERSEEDING, CL 4 (SPECIAL)
-  INTERSEEDING, CL 4B (MOD)

SUMMARY OF QUANTITIES FOR SHEET 16

PAY ITEM #	DESCRIPTION	UNIT	QUANTITY
X2500500	INTERSEEDING, CLASS 4 (SPECIAL)	ACRE	1.93
	INTERSEEDING, CLASS 4B (MODIFIED)	ACRE	0.04

ILLINOIS DEPARTMENT OF TRANSPORTATION
NATURAL AREAS MANAGEMENT

SEEDING PLAN

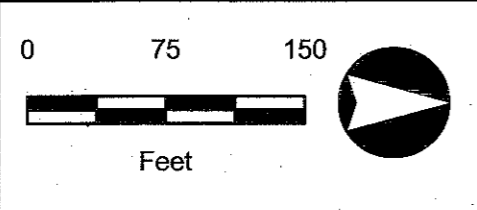
	ROUTE	SECTION	COUNTY	TOTAL SHEETS	SHEET NUMBER
	VARIOUS	2012-005 I	VARIOUS	19	17

CONTRACT 60T45



SITE LOCATION
 NE QUAD
 I-57 AT SAUK TRAIL

TEAM SECTION:
 E34 - I-57/I-80



LEGEND

	WEED CONTROL, AQUATIC
	WEED CONTROL, TEASEL
	SELECTIVE CLEARING
	TREE REMOVAL

SUMMARY OF QUANTITIES FOR SHEET 17

PAY ITEM #	DESCRIPTION	UNIT	QUANTITY
20100110	TREE REMOVAL (6 TO 15 UNITS DIAMETER)	UNIT	80
K0029614	WEED CONTROL, AQUATIC	GAL	2.28
K0029624	WEED CONTROL, TEASEL	GAL	0.32
X0325222	WEED CONTROL, BASAL TREATMENT	GAL	5
X2010300	TREE REMOVAL (UNDER 6 UNITS DIAMETER)	UNIT	130
Z0064800	SELECTIVE CLEARING	UNIT	30

ILLINOIS DEPARTMENT OF TRANSPORTATION
 NATURAL AREAS MANAGEMENT

 WEED CONTROL PLAN

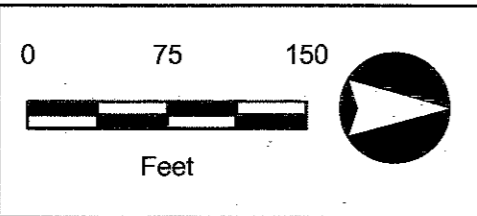
	ROUTE	SECTION	COUNTY	TOTAL SHEETS	SHEET NUMBER
	VARIOUS	2012-005 I	VARIOUS	19	18

CONTRACT 60T45



SITE LOCATION
 NE QUAD
 I-57 AT SAUK TRAIL

 TEAM SECTION:
 E34 - I-57/I-80



LEGEND

	INTERSEEDING, CL 4 (SPECIAL)
--	------------------------------

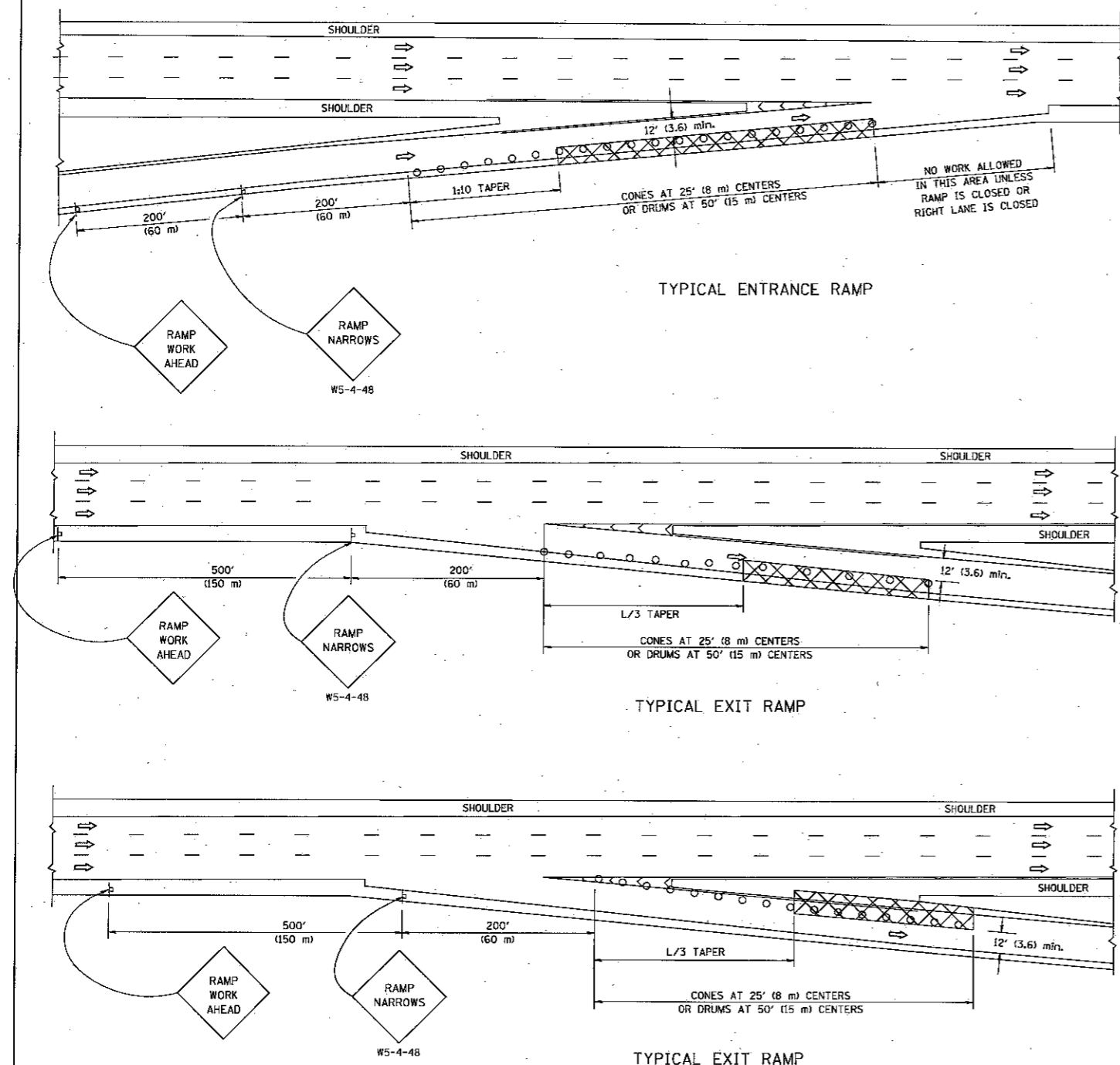
SUMMARY OF QUANTITIES FOR SHEET 18

PAY ITEM #	DESCRIPTION	UNIT	QUANTITY
X2500500	INTERSEEDING, CLASS 4 (SPECIAL)	ACRE	0.32

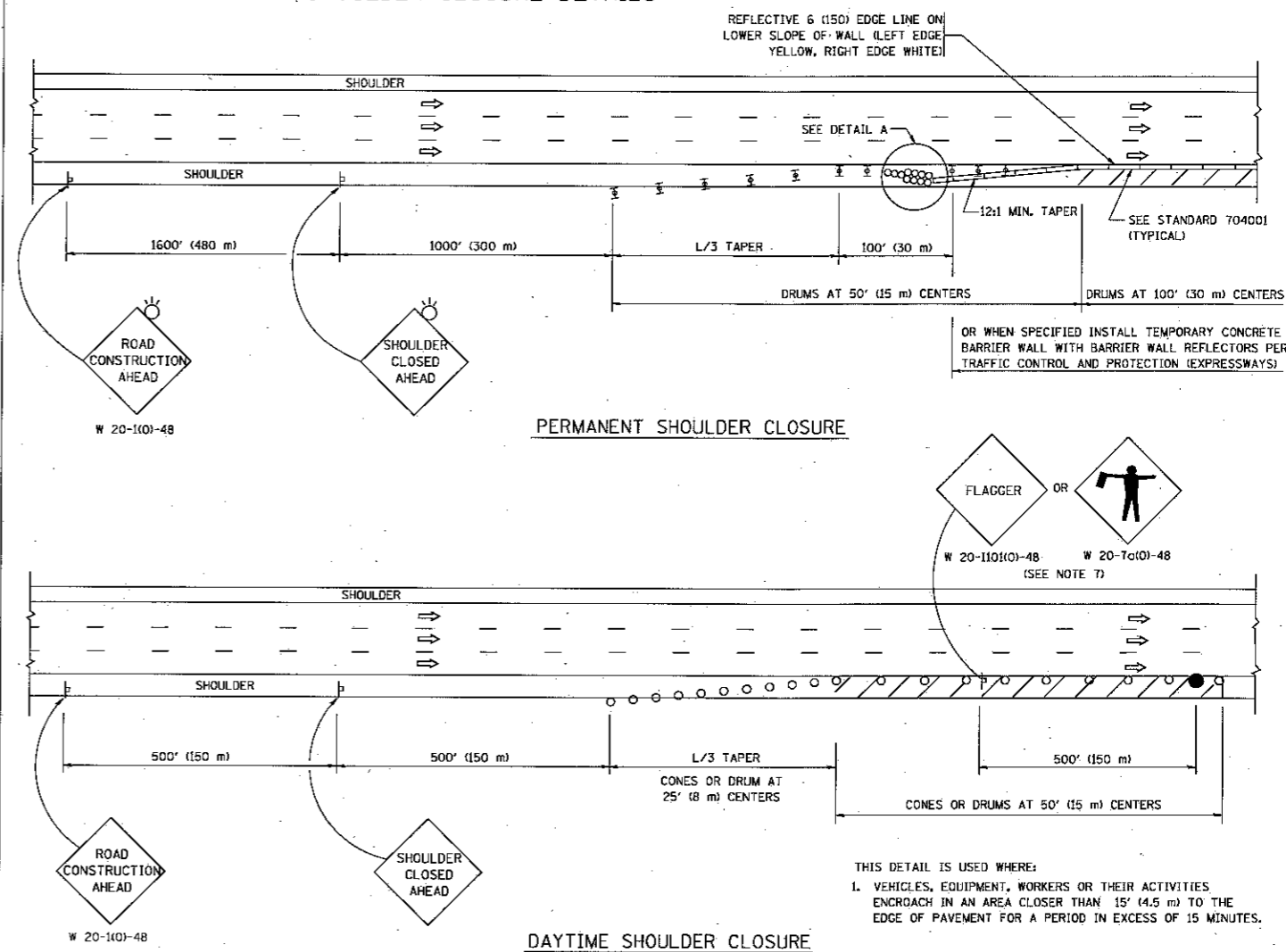
ILLINOIS DEPARTMENT OF TRANSPORTATION
 NATURAL AREAS MANAGEMENT

 SEEDING PLAN

PARTIAL RAMP CLOSURE DETAILS



SHOULDER CLOSURE DETAILS



SYMBOLS

- ACTIVE WORK AREA
- SIGN ON PORTABLE OR PERMANENT SUPPORT
- FLAGGER WITH CONTROL SIGN
- TYPE II BARRICADE, DRUM OR VERTICAL BARRICADE WITH STEADY BURN MONO-DIRECTIONAL LIGHT
- CONE, DRUM OR BARRICADE

GENERAL NOTES

1. THE "L" DISTANCE EQUALS:

SPEED LIMIT	FORMULAS
45 mph (80 km/h) OR GREATER:	METRIC ENGLISH
	$L=0.65(WKS)$ $L=(WKS)$
	$W =$ WIDTH OF OFFSET IN FEET (METERS)
	$S =$ NORMAL POSTED SPEED MPH (KM/H)
2. PLASTIC DRUMS WITH HIGH PERFORMANCE REFLECTIVE SHEETING AND STEADY BURNING LIGHTS ARE REQUIRED FOR ALL NIGHTTIME CLOSURES.
3. ALL SIGNS SHALL BE POST MOUNTED IF THE CLOSURE TIME EXCEEDS FOUR DAYS.
4. FLASHING LIGHTS SHALL BE USED DURING THE HOURS OF DARKNESS AND SHALL BE INSTALLED ABOVE THE FIRST TWO SETS OF SIGNS.

5. THE IMPACT ATTENUATOR, TEMPORARY IS NOT REQUIRED WHEN THE TEMPORARY CONCRETE BARRIER WALL IS PROTECTED BY OR IS TIED INTO THE EXISTING GUARDRAIL. IF OFFSET IS LESS THAN 5 FEET USE NARROW USE TYPE DEVICE TO MEET NCHRP350.
6. AUTHORIZATION FROM THE DISTRICT'S BUREAU OF TRAFFIC IS REQUIRED FOR ALL FREEWAY CLOSURES.
7. THE FLAGGER AND FLAGGER SIGN ARE REQUIRED AT THE ABOVE WORK SITES WHEN:
 - a. FOUR OR MORE WORK VEHICLES ENTER THE TRAFFIC LANES IN A ONE HOUR PERIOD.
 - b. THE WORK AVTIVITY REQUIRES FREQUENT ENCROACHMENT INTO THE LANE OPEN TO TRAFFIC.
 THE FLAGGER SHALL BE STATIONED APPROXIMATELY 100' (30 m) TO 200' (60 m) IN ADVANCE OF THE WORKERS.

ARRAY DESIGN PER MANUFACTURER TO BE NCHRP 350 COMPLIANT.

DETAIL "A"
IMPACT ATTENUATOR, TEMPORARY
(SEE NOTE 5)

ALL DIMENSIONS ARE IN INCHES (MILLIMETERS) UNLESS OTHERWISE SHOWN.

FILE NAME = W:\d\atd\22x34\col17.dgn	USER NAME = lsga	DESIGNED -	REVISED - 04-03	STATE OF ILLINOIS DEPARTMENT OF TRANSPORTATION	TRAFFIC CONTROL DETAILS FOR FREEWAY SHOULDER CLOSURES AND PARTIAL RAMP CLOSURES	F.A. RTE.	SECTION	COUNTY	TOTAL SHEETS	SHEET NO.	
PLOT SCALE = 5/8" = 1' IN.	DRAWN - D.W.S.	REVISOR - J.A.F. 12-06	REVISOR - S.P.B. 01-07			VAR 2012-005 I	VAR 19	VAR 19	CONTRACT NO. 60145		
PLOT DATE = 1/26/2010	CHECKED -	REVISOR - S.P.B. 12-09				TC-17					
	DATE - 11-96					SCALE: NONE	SHEET NO. 1 OF 1 SHEETS	STA.	TO STA.	FED. ROAD DIST. NO. 1 (ILLINOIS) FED. AID PROJECT	