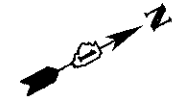


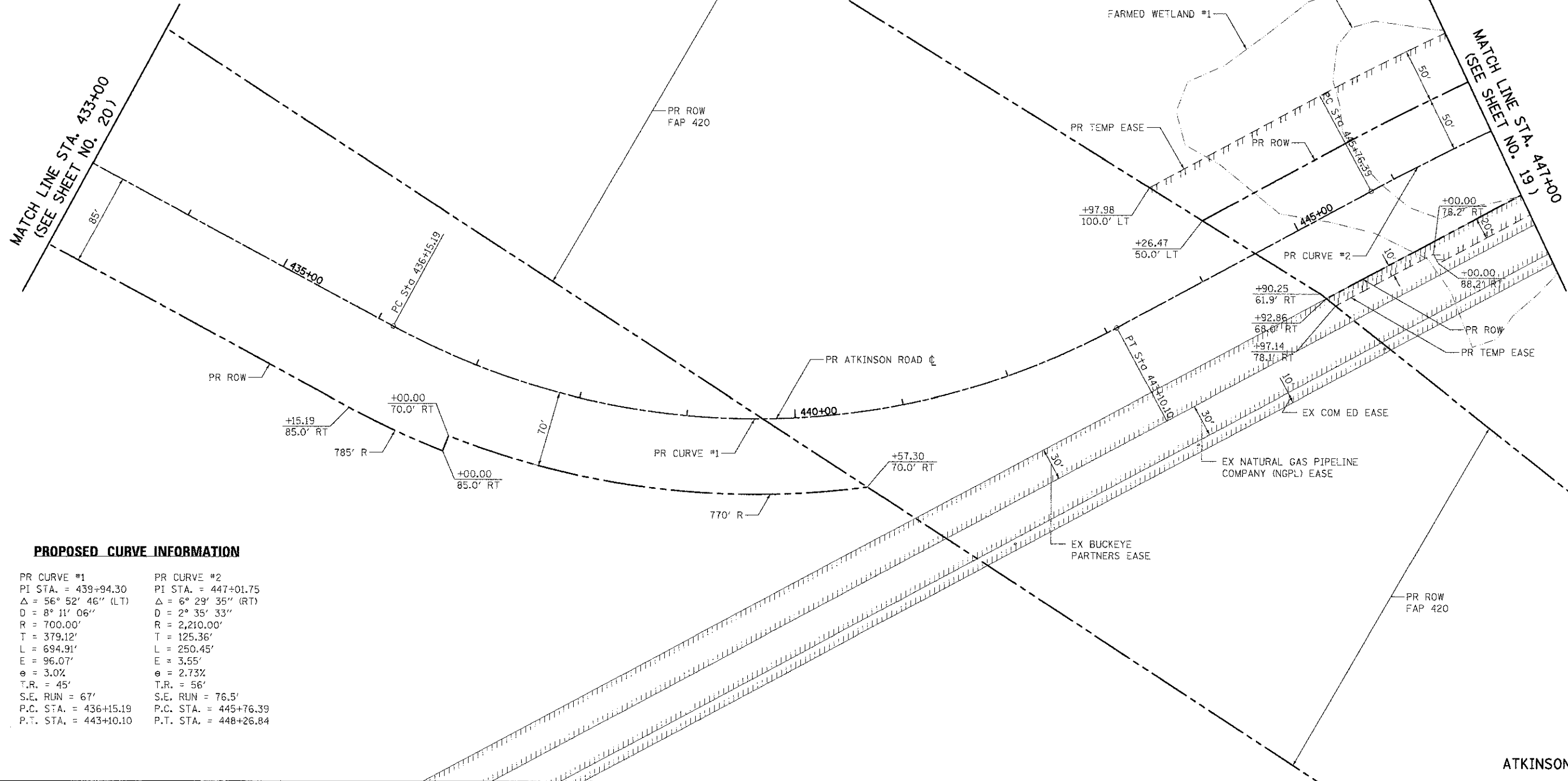
DESCRIPTION	STATION	NORTHING	EASTING
B.O.A.	428+71.31	2062985.45	1066861.27
P.C.	436+15.19	2063395.32	1067482.05
P.I.	439+94.30	2063630.53	1067838.28
P.T.	443+10.10	2063983.32	1067796.34
P.C.	445+76.39	2064249.61	1067794.88
P.I.	447+01.75	2064374.96	1067794.19
P.T.	448+26.84	2064499.60	1067807.68
P.C.	449+29.84	2064602.00	1067818.77
P.I.	450+55.20	2064726.63	1067832.26
P.T.	451+80.29	2064851.99	1067831.57
P.C.	455+30.42	2065202.11	1067829.65
P.I.	456+06.29	2065277.99	1067829.23
P.R.C.	456+81.53	2065352.06	1067845.67
P.I.	457+57.41	2065426.13	1067862.11
P.T.	458+32.65	2065502.01	1067861.69
E.O.A.	468+80.06	2066549.40	1067855.94

BENCHMARK INFORMATION				
ALIGNMENT	STATION	OFFSET	ELEVATION	DESCRIPTION
ATKINSON ROAD	461+47.20	75.12' RT	794.785	CHISELED SQUARE LOCATED ON THE N.E. CORNER OF TRAFFIC SIGNAL EQUIPMENT PAD, ON THE N.E. CORNER OF ATKINSON ROAD AND IL ROUTE 120
IVANHOE ROAD	309+23.14	52.97' RT	793.497	CHISELED "X" LOCATED ON THE TOP OF CURB NEAR BLOCKBUSTER ON THE S.E. CORNER OF IL ROUTE 120 AND IVANHOE ROAD
IL ROUTE 120	130+93.69	160.83' RT	798.348	CHISELED SQUARE ON TOP OF THE CURB, LOCATED 100' S. OF IL ROUTE 120 ON E. SIDE OF ASHFORD LANE NEAR FIRE HYDRANT



**NOTES**

- HORIZONTAL DATUM = STATE PLANE COORDINATES NAD83  
VERTICAL DATUM = LOCAL DATUM



**PROPOSED CURVE INFORMATION**

PR CURVE #1	PR CURVE #2
PI STA. = 439+94.30	PI STA. = 447+01.75
$\Delta = 56^\circ 52' 46''$ (LT)	$\Delta = 6^\circ 29' 35''$ (RT)
D = 8' 11' 06"	D = 2' 35' 33"
R = 700.00'	R = 2,210.00'
T = 379.12'	T = 125.36'
L = 694.91'	L = 250.45'
E = 96.07'	E = 3.55'
e = 3.0%	e = 2.73%
T.R. = 45'	T.R. = 56'
S.E. RUN = 67'	S.E. RUN = 76.5'
P.C. STA. = 436+15.19	P.C. STA. = 445+76.39
P.T. STA. = 443+10.10	P.T. STA. = 448+26.84



USLR NAME = eds	DESIGNED = JSM	REVISED =
FILE NAME = ...2199-shs-r180.dgn	DRAWN = JSM	REVISED =
PLOT SCALE = 50:2000	CHECKED = DNM	REVISED =
PLOT DATE = 2/2/2012	DATE = 02/06/12	REVISED =

**STATE OF ILLINOIS  
DEPARTMENT OF TRANSPORTATION**

**ATKINSON ROAD  
ALIGNMENT, TIES, AND RIGHT-OF-WAY**

SCALE: 1" = 50' SHEET NO. 1 OF 3 SHEETS STA. 433+00 TO STA. 447+00

F.A.U. RTE. 198	SECTION 00-00045-00-PV	COUNTY LAKE	TOTAL SHEETS 195	SHEET NO. 18
CONTRACT NO. 63640				
FED. ROAD DIST. NO. 1 ILLINOIS FED. AID PROJECT				