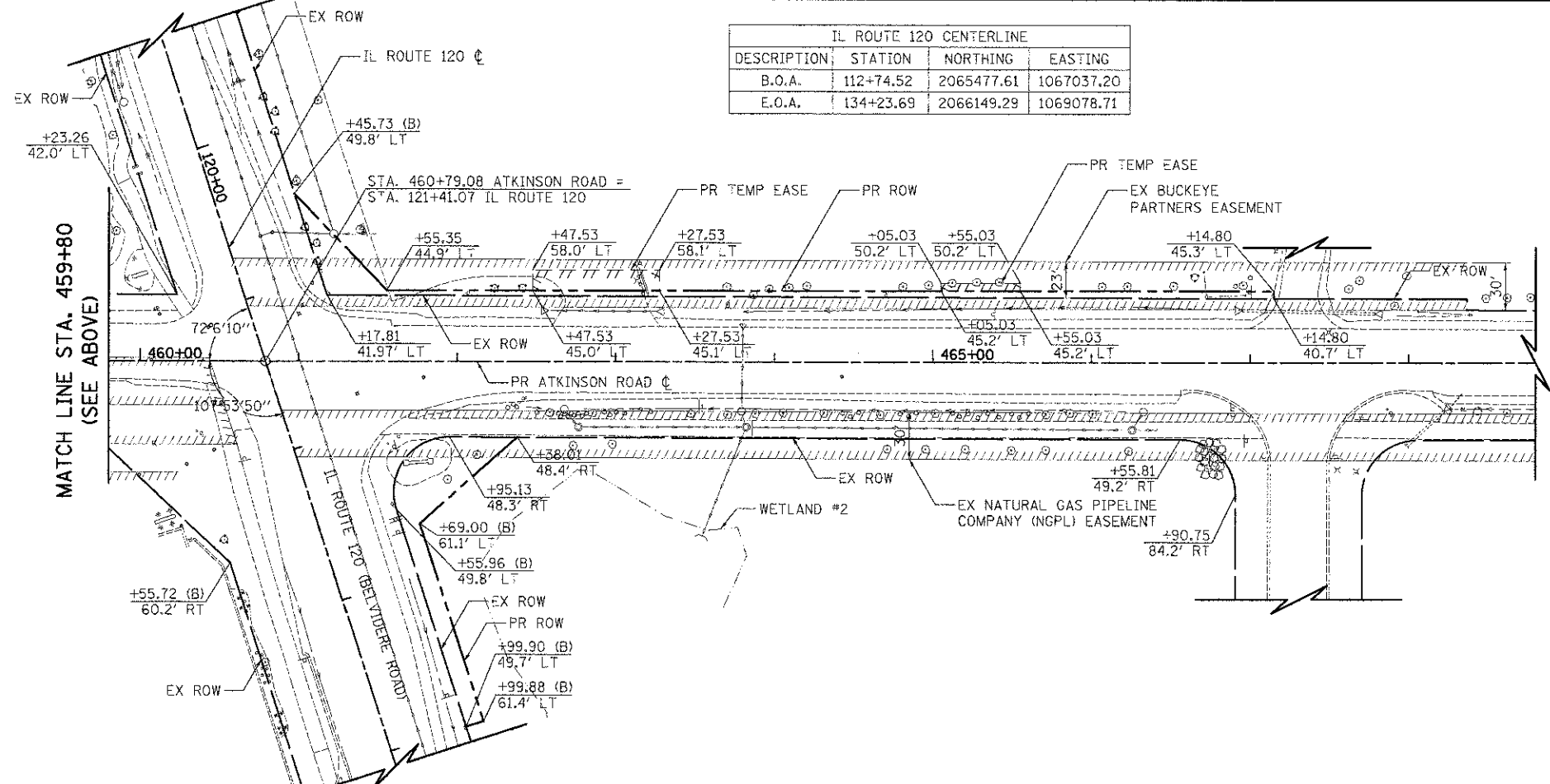


PROPOSED GRADING CONSTRUCTION BASELINE			
DESCRIPTION	STATION	NORTHING	EASTING
B.O.A.	5+00.00	2064776.22	1066549.29
E.O.A.	17+81.55	2064781.40	1067830.83

PROPOSED CURVE INFORMATION			
PR CURVE #2	PR CURVE #3	PR CURVE #4	PR CURVE #5
PI STA. = 447+01.75	PI STA. = 450+55.20	PI STA. = 456+06.29	PI STA. = 457+57.41
$\Delta = 6^\circ 29' 35''$ (RT)	$\Delta = 6^\circ 29' 35''$ (LT)	$\Delta = 12^\circ 49' 38''$ (RT)	$\Delta = 12^\circ 49' 38''$ (LT)
D = 2° 35' 33"	D = 2° 35' 33"	D = 8° 29' 18"	D = 8° 29' 18"
R = 2,210.00'	R = 2,210.00'	R = 675.00'	R = 675.00'
T = 125.36'	T = 125.36'	T = 75.88'	T = 75.88'
L = 250.45'	L = 250.45'	L = 151.12'	L = 151.12'
E = 3.55'	E = 3.55'	E = 4.25'	E = 4.25'
e = 2.73%	e = 2.73%	e = N.C.	e = N.C.
T.R. = 56'	T.R. = 56'	T.R. = N/A	T.R. = N/A
S.E. RUN = 76.5'	S.E. RUN = 76.5'	S.E. RUN = N/A	S.E. RUN = N/A
P.C. STA. = 445+76.39	P.C. STA. = 449+29.84	P.C. STA. = 455+30.42	P.C. STA. = 456+81.53
P.T. STA. = 448+26.84	P.T. STA. = 451+80.29	P.T. STA. = 456+81.53	P.T. STA. = 458+32.65

IL ROUTE 120 CENTERLINE			
DESCRIPTION	STATION	NORTHING	EASTING
B.O.A.	112+74.52	2065477.61	1067037.20
E.O.A.	134+23.69	2066149.29	1069078.71



- NOTES**
- STATION/OFFSET CALL-OFFS NOTED WITH (B) ARE DEFINED BY THE IL ROUTE 120 (BELVIDERE ROAD) ALIGNMENT.