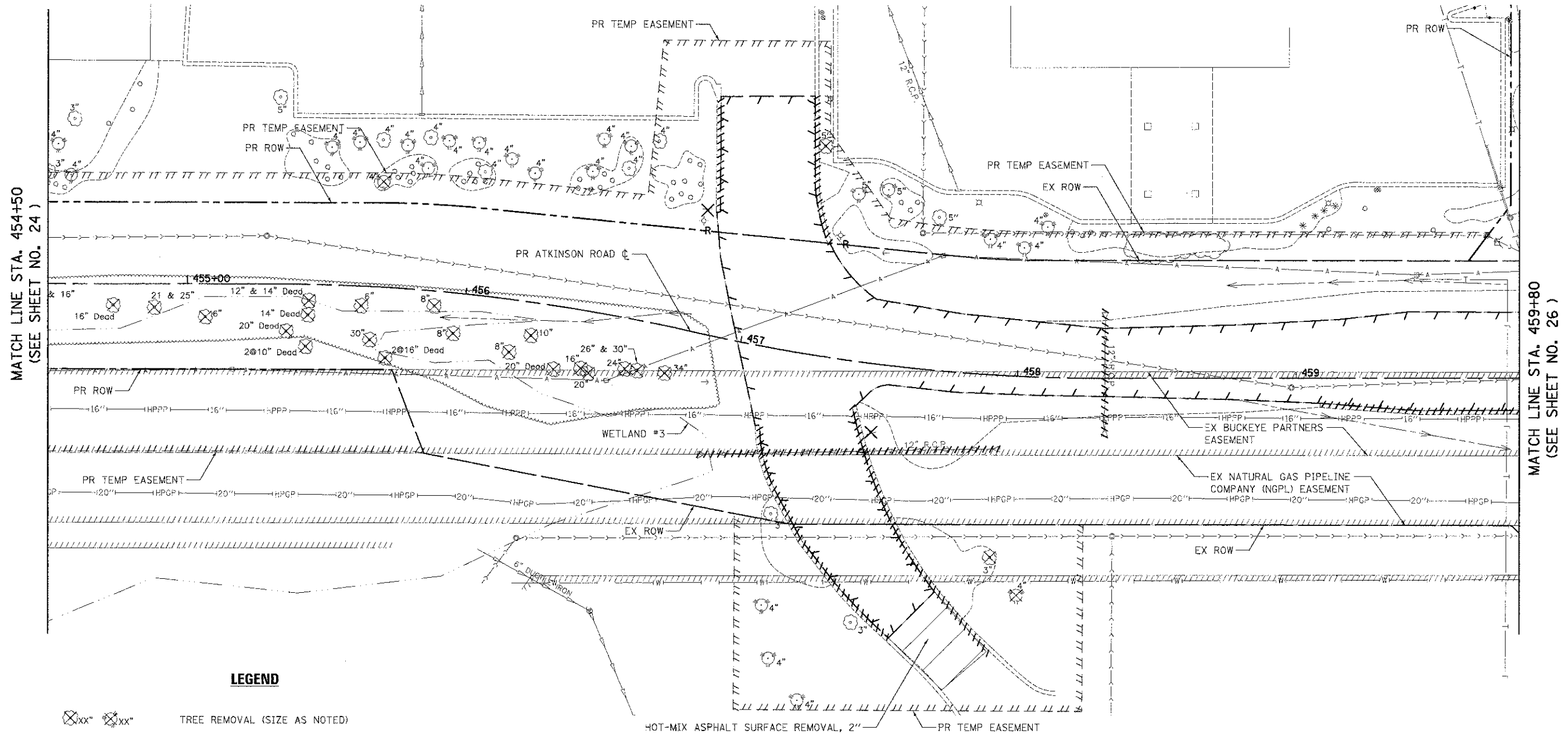


NOTES:

1. SEE ALIGNMENT, TIES, AND RIGHT-OF-WAY SHEETS FOR PROPOSED R.O.W. AND EASEMENT LOCATIONS, STATION EQUATIONS, AND CURVE INFORMATION.
2. FOR TRAFFIC SIGNAL REMOVAL AND RELOCATION PLANS, SEE TRAFFIC SIGNAL SHEETS.
3. FOR SIGN REMOVAL AND RELOCATION PLANS, SEE PAVEMENT MARKING AND SIGN SHEETS.



MATCH LINE STA. 454+50
(SEE SHEET NO. 24)

MATCH LINE STA. 459+80
(SEE SHEET NO. 26)

LEGEND

- TREE REMOVAL (SIZE AS NOTED)
- HOT-MIX ASPHALT SURFACE REMOVAL, 2"
- PAVEMENT REMOVAL OR DRIVEWAY PAVEMENT REMOVAL
- REMOVING MANHOLES, CATCH BASINS, OR INLETS
- PIPE CULVERT OR STORM SEWER REMOVAL
- RELOCATE EXISTING LIGHTING UNIT AND REMOVAL OF POLE FOUNDATION
- COMBINATION CURB AND GUTTER REMOVAL
- REMOVE SIGN PANEL ASSEMBLY OR RELOCATE SIGN PANEL ASSEMBLY
- FIRE HYDRANT AND VALVE TO BE MOVED



USER NAME: jds
 FILE NAME: ...\\06-Removals\2189-sh1-trm25
 PLOT SCALE: 20.0000 / in.
 PLOT DATE: 2/2/2012

DESIGNED - JSM
 DRAWN - JSM
 CHECKED - DNM
 DATE - 02/06/12

REVISED -
 REVISED -
 REVISED -
 REVISED -

**STATE OF ILLINOIS
 DEPARTMENT OF TRANSPORTATION**

**ATKINSON ROAD
 REMOVAL PLAN**

SCALE: 1" = 20' SHEET NO. 5 OF 13 SHEETS STA. 454+50 TO STA. 460+00

F.A.U. RTE. 198	SECTION 00-00045-00-PV	COUNTY LAKE	TOTAL SHEETS 195	SHEET NO. 25
CONTRACT NO. 63640				
FED. ROAD DIST. NO. 1 (ILLINOIS) FED. AID PROJECT				