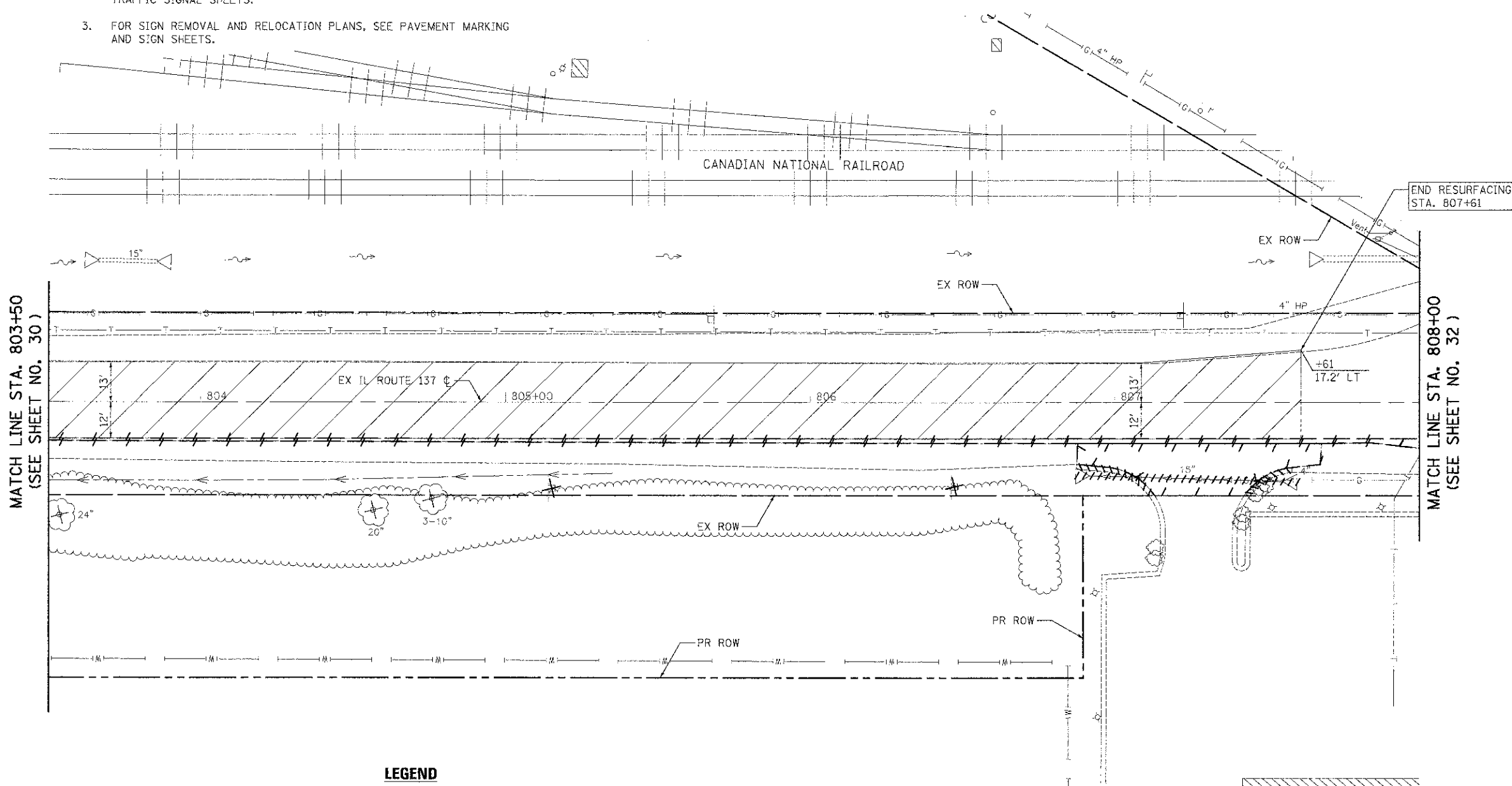


NOTES:

1. SEE ALIGNMENT, TIES, AND RIGHT-OF-WAY SHEETS FOR PROPOSED R.O.W. AND EASEMENT LOCATIONS, STATION EQUATIONS, AND CURVE INFORMATION.
2. FOR TRAFFIC SIGNAL REMOVAL AND RELOCATION PLANS, SEE TRAFFIC SIGNAL SHEETS.
3. FOR SIGN REMOVAL AND RELOCATION PLANS, SEE PAVEMENT MARKING AND SIGN SHEETS.



LEGEND

- | | | | |
|--|---|--|--|
| | TREE REMOVAL (SIZE AS NOTED) | | PIPE CULVERT OR STORM SEWER REMOVAL |
| | HOT-MIX ASPHALT SURFACE REMOVAL, 2" | | RELOCATE EXISTING LIGHTING UNIT AND REMOVAL OF POLE FOUNDATION |
| | PAVEMENT REMOVAL OR DRIVEWAY PAVEMENT REMOVAL | | COMBINATION CURB AND GUTTER REMOVAL |
| | REMOVING MANHOLES, CATCH BASINS, OR INLETS | | REMOVE SIGN PANEL ASSEMBLY OR RELOCATE SIGN PANEL ASSEMBLY |
| | | | FIRE HYDRANT AND VALVE TO BE MOVED |

IL ROUTE 137

	USER NAME = eds FILE NAME = ...V06-Removals\2.99-ahhromil... PLOT SCALE = 20.0000' / 1" = 20' PLOT DATE = 2/2/2012	DESIGNED - JSM DRAWN - JSM CHECKED - DNM DATE - 02/06/12	REVISED - REVISED - REVISED - REVISED -	STATE OF ILLINOIS DEPARTMENT OF TRANSPORTATION	IL ROUTE 137 REMOVAL PLAN	SCALE: 1" = 20'	SHEET NO. 11 OF 13 SHEETS	STA. 803+50 TO STA. 808+00	F.A.U. RTE. 198	SECTION 00-00045-00-PV	COUNTY LAKE	TOTAL SHEETS 195 SHEETS NO. 31	CONTRACT NO. 63640
	FED. ROAD DIST. NO. 1 ILLINOIS FED. AID PROJECT												