

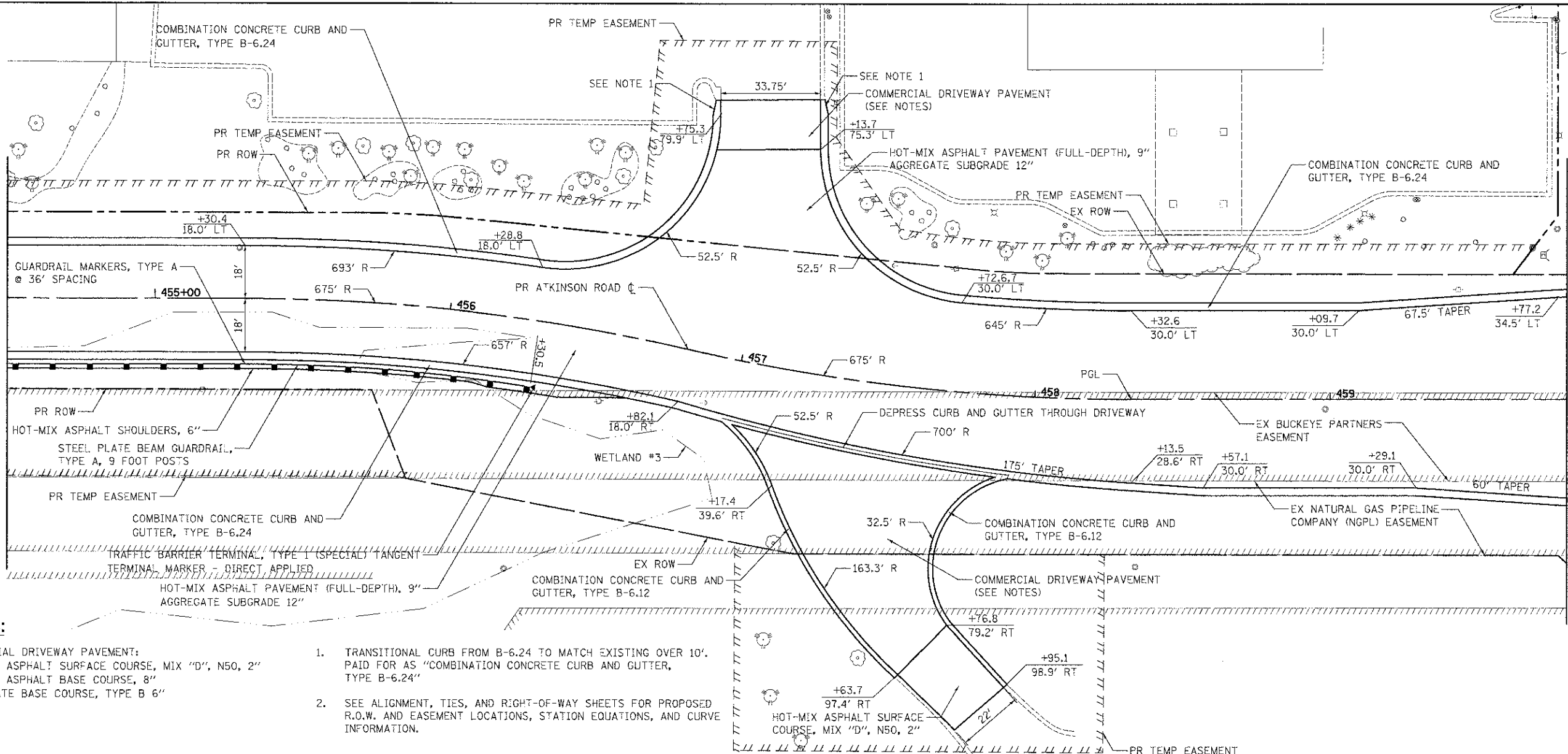
PLAN	DATE
REVISED	BY
NOTE 800K	ALTERNATE
RT. OF WAY CHECKED	DATE
NO. ROAD FILE NAME	

PROFILE	DATE
REVISED	BY
NOTE 800K	ALTERNATE
RT. OF WAY CHECKED	DATE
NO. ROAD FILE NAME	



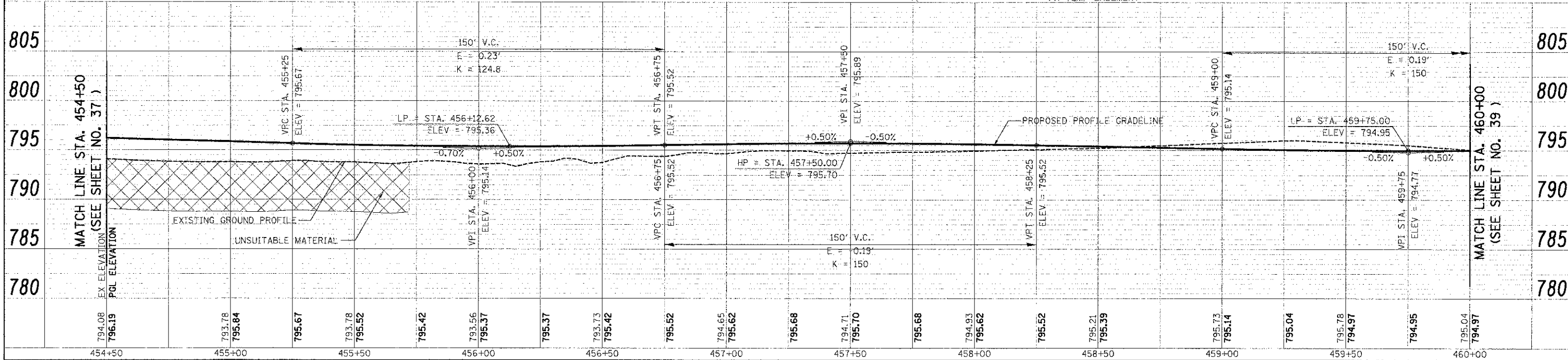
MATCH LINE STA. 454+50
(SEE SHEET NO. 37)

MATCH LINE STA. 459+80
(SEE SHEET NO. 39)



NOTES:

- COMMERCIAL DRIVEWAY PAVEMENT:
 -HOT-MIX ASPHALT SURFACE COURSE, MIX "D", N50, 2"
 -HOT-MIX ASPHALT BASE COURSE, 8"
 -AGGREGATE BASE COURSE, TYPE B 6"
- TRANSITIONAL CURB FROM B-6.24 TO MATCH EXISTING OVER 10'. PAID FOR AS "COMBINATION CONCRETE CURB AND GUTTER, TYPE B-6.24"
 - SEE ALIGNMENT, TIES, AND RIGHT-OF-WAY SHEETS FOR PROPOSED R.O.W. AND EASEMENT LOCATIONS, STATION EQUATIONS, AND CURVE INFORMATION.



USER NAME: eds	DESIGNED: JSM	REVISED: -
FILE NAME: ...2189-ent-plnpr705.dgn	DRAWN: JSM	REVISED: -
PLOT SCALE: 20.0000 / 1 in.	CHECKED: DNM	REVISED: -
PLOT DATE: 2/2/2012	DATE: 02/06/12	REVISED: -

**STATE OF ILLINOIS
DEPARTMENT OF TRANSPORTATION**

**ATKINSON ROAD
PLAN AND PROFILE**

SCALE: 1" = 20' SHEET NO. 5 OF 13 SHEETS STA. 454+50 TO STA. 460+00

F.A.U. RT. 198	SECTION 00-00045-00-PV	COUNTY LAKE	TOTAL SHEETS 195	SHEET NO. 38
CONTRACT NO. 63640				