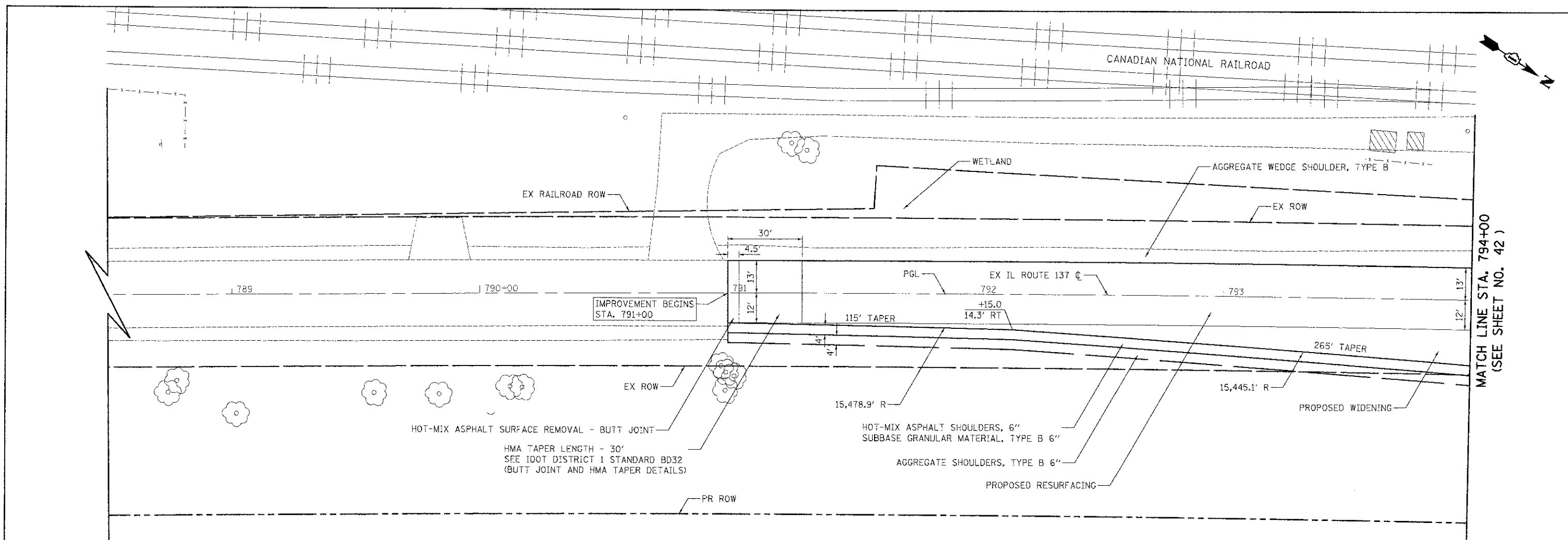


PLAN SURVEYED BY DATE
 NOT BOOK ALIGNMENT CHECKED
 RT. OF WAY CHECKED
 NO. CHD. SIZE NAME

PROJECT REVIEWED BY DATE
 NO. = UOK GRADES CHECKED
 NO. = UOK RT. OF WAY CHECKED
 NO. = UOK CHD. SIZE NAME

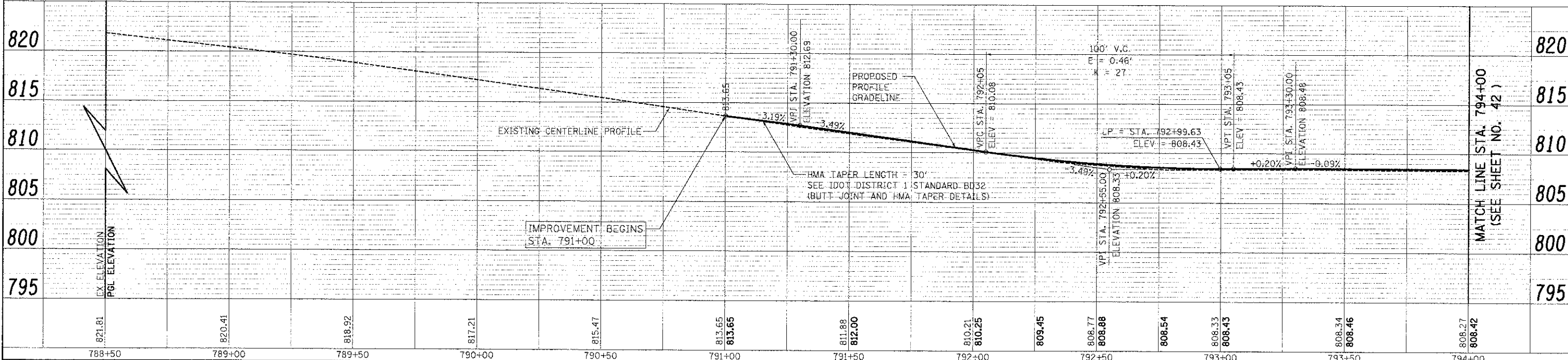


NOTES:

PROPOSED WIDENING:
 -POLYMERIZED HOT-MIX ASPHALT SURFACE COURSE, MIX "F", N90, 2"
 -HOT-MIX ASPHALT BASE COURSE, 8 1/2"
 -AGGREGATE SUBGRADE 12"

PROPOSED RESURFACING:
 -HOT-MIX ASPHALT SURFACE REMOVAL, 2"
 -POLYMERIZED HOT-MIX ASPHALT SURFACE COURSE, MIX "F", N90, 2"
 -LEVELING BINDER (MACHINE METHOD), N70, VARIABLE DEPTH

1. SEE ALIGNMENT, TIES, AND RIGHT-OF-WAY SHEETS FOR PROPOSED R.O.W. AND EASEMENT LOCATIONS, STATION EQUATIONS, AND CURVE INFORMATION.



788+50	789+00	789+50	790+00	790+50	791+00	791+50	792+00	792+50	793+00	793+50	794+00
821.81	820.41	818.92	817.21	815.47	813.65	812.00	810.21	809.45	808.77	808.54	808.27
821.81	820.41	818.92	817.21	815.47	813.65	812.00	810.25	809.45	808.88	808.43	808.42



DESIGNED - MJP
 DRAWN - MJP
 CHECKED - DNM
 DATE - 02/06/12

REVISED -
 REVISED -
 REVISED -
 REVISED -

STATE OF ILLINOIS
 DEPARTMENT OF TRANSPORTATION

IL ROUTE 137
 PLAN AND PROFILE
 SCALE: 1" = 20'
 SHEET NO. 1 OF 5 SHEETS
 STA. 791+00 TO STA. 794+00

F.A.U. SECTION COUNTY TOTAL SHEETS SHEET NO.
 198 00-00045-00-PV LAKE 195 41
 CONTRACT NO. 63640
 FED. ROAD DIST. NO. 1 ILLINOIS FED. AID PROJECT

MATCH LINE STA. 794+00
 (SEE SHEET NO. 42)

IL ROUTE 137

MATCH LINE STA. 794+00
 (SEE SHEET NO. 42)