

PLAN	REVISION	DATE
NO. 1	BY: []	
NO. 2	BY: []	
NO. 3	BY: []	
NO. 4	BY: []	
NO. 5	BY: []	
NO. 6	BY: []	
NO. 7	BY: []	
NO. 8	BY: []	
NO. 9	BY: []	
NO. 10	BY: []	
NO. 11	BY: []	
NO. 12	BY: []	

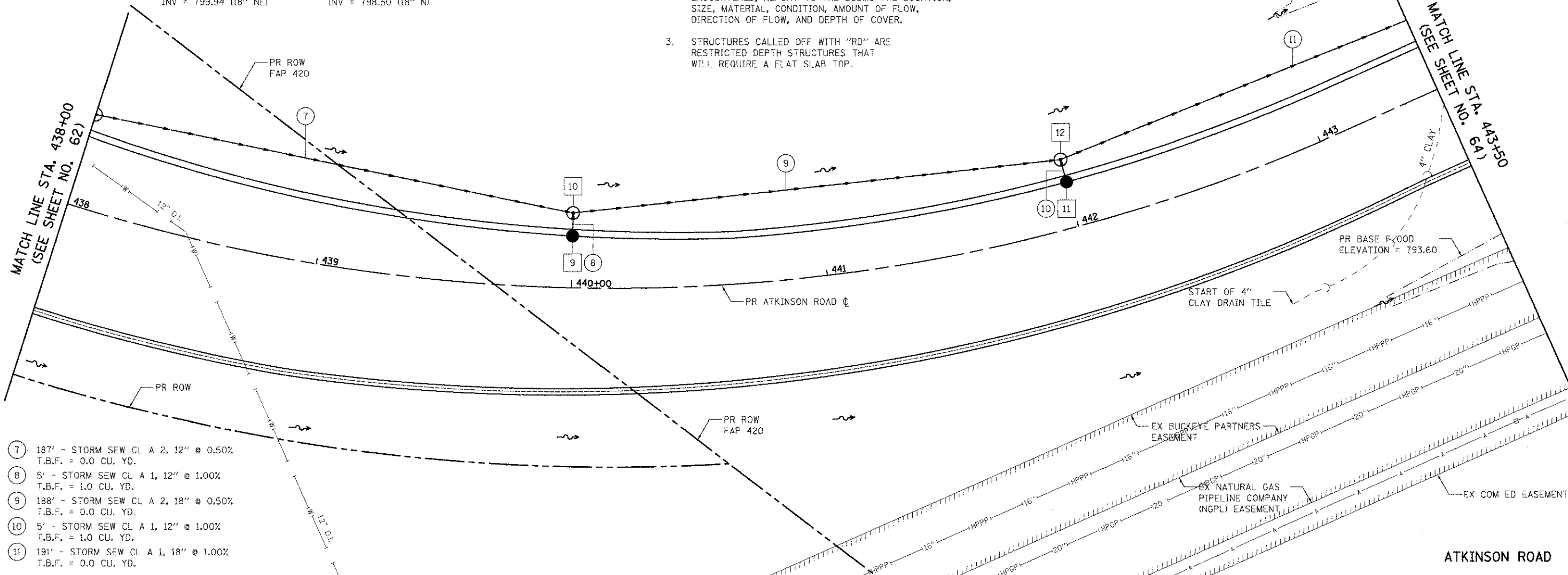
PROFILE	REVISION	DATE
NO. 1	BY: []	
NO. 2	BY: []	
NO. 3	BY: []	
NO. 4	BY: []	
NO. 5	BY: []	
NO. 6	BY: []	
NO. 7	BY: []	
NO. 8	BY: []	
NO. 9	BY: []	
NO. 10	BY: []	
NO. 11	BY: []	
NO. 12	BY: []	

- 9 STA. 440+00, 20.3' LT.
CB TC T24F&G
RIM = 805.94
INV = 801.94 (12" NW)
- 10 STA. 440+00, 29.3' LT.
RD MAN TA 4 DIA T1F CL
RIM = 805.60
INV = 801.89 (12" SE)
INV = 800.44 (12" SW)
INV = 799.94 (18" NE)
- 11 STA. 442+00, 18' LT.
CB TC T24F&G
RIM = 803.11
INV = 799.11 (12" W)
- 12 STA. 442+00, 27' LT.
RD MAN TA 4 DIA T1F CL
RIM = 802.77
INV = 799.06 (12" E)
INV = 799.00 (18" SW)
INV = 798.50 (18" N)

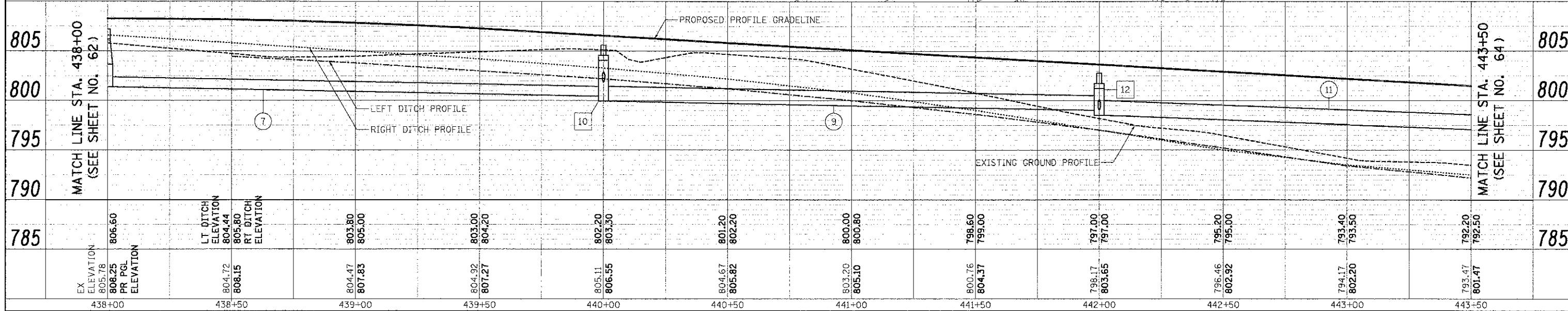
NOTES

1. WORK ON ALL IDENTIFIED DRAIN TILES SHALL BE COORDINATED WITH THE LCSMC FIELD REPRESENTATIVE.
2. ANY DRAIN TILES ENCOUNTERED DURING THE WORK WILL BE REPAIRED, REROUTED, OR CONNECTED TO THE STORM SEWER SYSTEM, AS APPROPRIATE, TO MAINTAIN DRAINAGE. FOR EACH DRAIN TILE ENCOUNTERED, REPORT TO THE LCSMC THE LOCATION, SIZE, MATERIAL, CONDITION, AMOUNT OF FLOW, DIRECTION OF FLOW, AND DEPTH OF COVER.
3. STRUCTURES CALLED OFF WITH "RD" ARE RESTRICTED DEPTH STRUCTURES THAT WILL REQUIRE A FLAT SLAB TOP.

PR BASE FLOOD ELEVATION = 793.45



- 7 187' - STORM SEW CL A 2, 12" @ 0.50%
T.B.F. = 0.0 CU. YD.
- 8 5' - STORM SEW CL A 1, 12" @ 1.00%
T.B.F. = 1.0 CU. YD.
- 9 188' - STORM SEW CL A 2, 18" @ 0.50%
T.B.F. = 0.0 CU. YD.
- 10 5' - STORM SEW CL A 1, 12" @ 1.00%
T.B.F. = 1.0 CU. YD.
- 11 191' - STORM SEW CL A 1, 18" @ 1.00%
T.B.F. = 0.0 CU. YD.



EX ELEVATION	805.78	806.60	804.72	808.25	804.47	807.83	804.92	807.27	805.11	806.55	804.67	805.82	803.20	805.10	800.76	804.37	798.17	803.65	796.46	802.92	794.17	802.20	793.47	801.47	792.20	792.50
PR PGL ELEVATION	805.78	806.60	804.72	808.25	804.47	807.83	804.92	807.27	805.11	806.55	804.67	805.82	803.20	805.10	800.76	804.37	798.17	803.65	796.46	802.92	794.17	802.20	793.47	801.47	792.20	792.50
LT DITCH ELEVATION			804.44				803.00																			
RT DITCH ELEVATION			805.80				804.20																			
STATION	438+00	438+50	439+00	439+50	440+00	440+50	441+00	441+50	442+00	442+50	443+00	443+50														



USER NAME: ees	DESIGNED: MJP	REVISED: -
FILE NAME: ...2189-shtrdrain02.dgn	DRAWN: MJP	REVISED: -
PLTCH SCH F: 20.0000 / 1"	CHECKED: DNM	REVISED: -
PLT DATE: 2/2/2012	DATE: 02/06/12	REVISED: -

STATE OF ILLINOIS
DEPARTMENT OF TRANSPORTATION

ATKINSON ROAD
DRAINAGE & UTILITIES

F.A.U. R.T.E. 198	SECTION 00-00045-00-PV	COUNTY LAKE	TOTAL SHEETS 195	SHEET NO. 63
CONTRACT NO. 63640				
FED. ROAD DIST. NO. 1 [ILLINOIS] FED. AID PROJECT				

SCALE: 1" = 20' SHEET NO. 2 OF 15 SHEETS STA. 438+00 TO STA. 443+50