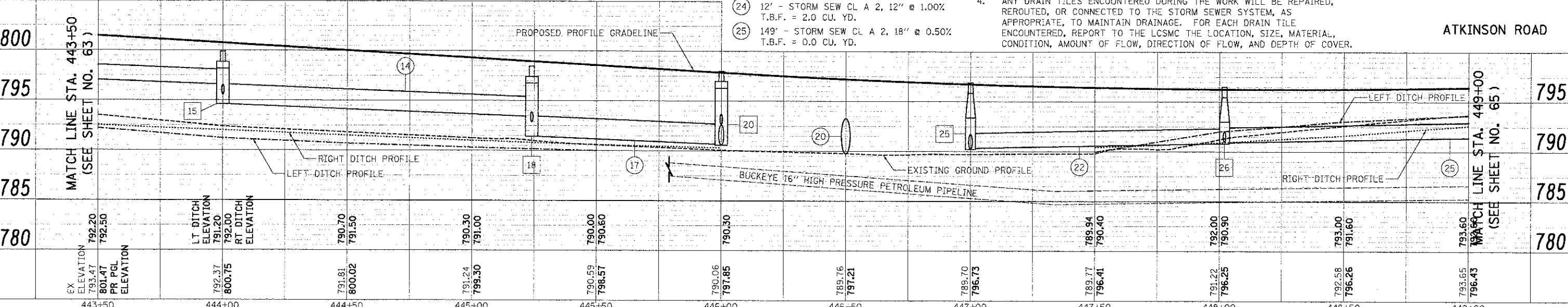
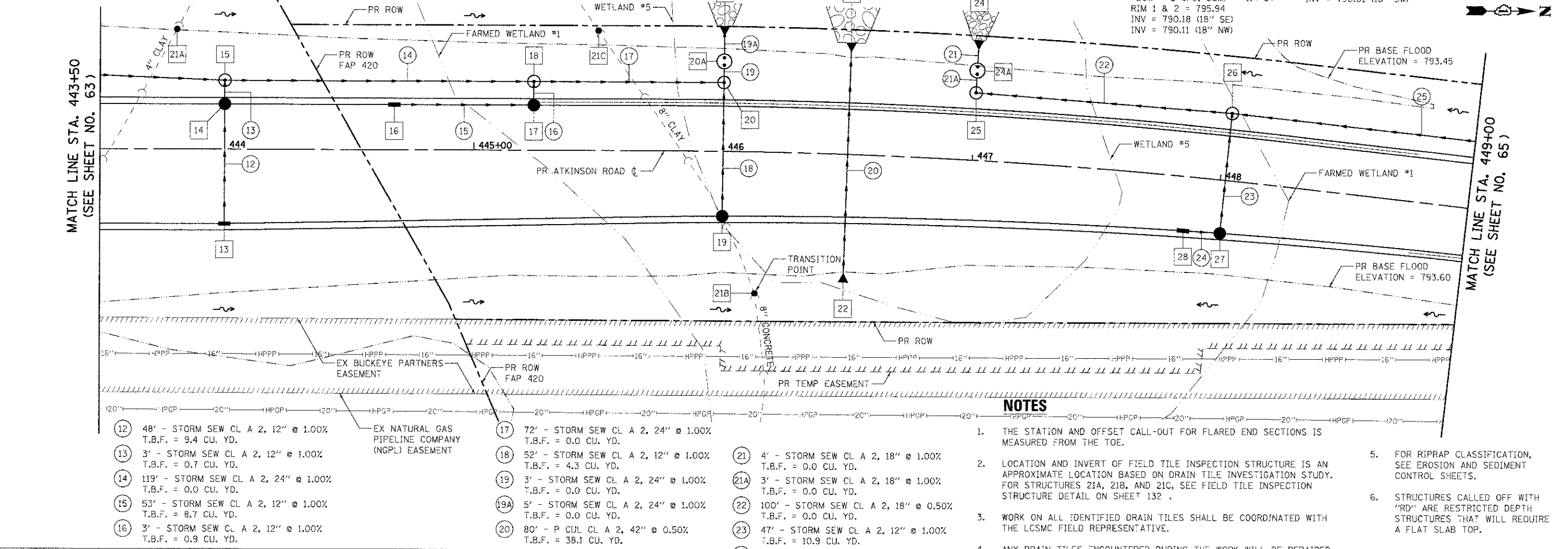


PLAN	SURVEYED	DATE
NOTE BOOK	BY	
NO.	NO.	
NO.	NO.	
NO.	NO.	

PROFILE	SURVEYED	DATE
NOTE BOOK	BY	
NO.	NO.	
NO.	NO.	
NO.	NO.	

- 13 STA. 444+00, 30' RT. INLETS TA T24F&G RIM = 800.15 INV = 796.15 (12" W)
- 14 STA. 444+00, 18' LT. CB TA 4 DIA T24F&G RIM = 800.39 INV = 795.67 (12" E) INV = 795.57 (12" W)
- 15 STA. 444+00, 27.5' LT. RD MAN TA 5 DIA TIF CL RIM = 799.88 INV = 795.54 (12" E) INV = 796.59 (18" S) INV = 794.59 (24" N)
- 16 STA. 444+68, 18' LT. INLETS TA T24F&G RIM = 799.40 INV = 795.40 (12" N)
- 17 STA. 445+24, 18' LT. RD CB TA 4 DIA T24F&G RIM = 798.95 INV = 794.87 (12" S) INV = 792.87 (12" W)
- 18 STA. 445+24, 27.5' LT. RD MAN TA 5 DIA TIF CL RIM = 798.45 INV = 792.84 (12" E) INV = 793.40 (24" S) INV = 791.40 (24" N)
- 19 STA. 446+00, 26.1' RT. CB TC T24F&G RIM = 797.16 INV = 793.16 (12" W)
- 20 STA. 446+00, 27.5' LT. RD MAN TA 5 DIA TIF CL RIM = 798.00 INV = 792.64 (12" E) INV = 790.68 (24" S) INV = 790.58 (24" W)
- 20A STA. 446+00, 36' LT. STORM WATER TRTMT SYS FLOW = 4 CFS; SUMP = 2 CY RIM 1 & 2 = 796.90 INV = 790.55 (24" E) INV = 789.95 (24" W)
- 21 STA. 446+00, 50' LT. PRC FLAR END SEC 24" INV = 789.84 (24" E)
- 21A STA. 443+81, 48' LT. FIELD TILE INSPEC STR RIM = 793.33 INV = 789.13 (4")
- 21B STA. 446+14, 57' RT. FIELD TILE INSPEC STR RIM = 791.48 INV = 787.86 (8")
- 21C STA. 445+50, 48' LT. FIELD TILE INSPEC STR RIM = 791.54 INV = 787.56 (8")
- 22 STA. 446+50, 51.6' RT. PRC FLAR END SEC 42" INV = 790.22 (42" W)
- 23 STA. 446+50, 44.8' LT. PRC FLAR END SEC 42" INV = 789.74 (42" E)
- 24 STA. 447+00, 48.1' LT. PRC FLAR END SEC 18" INV = 790.01 (18" SE)
- 24A STA. 447+00, 36' LT. STORM WATER TRTMT SYS FLOW = 2 CFS; SUMP = 1.4 CY RIM 1 & 2 = 795.94 INV = 790.18 (18" SE) INV = 790.11 (18" NW)
- 25 STA. 447+00, 27.5' LT. MAN TA 4 DIA TIF CL RIM = 796.88 INV = 790.31 (18" NE) INV = 790.21 (18" NW)
- 26 STA. 448+02, 27.5' LT. MAN TA 4 DIA TIF CL RIM = 796.50 INV = 790.99 (12" SE) INV = 790.91 (18" NE) INV = 790.81 (18" SW)
- 27 STA. 448+02, 21.3' RT. RD CB TA 4 DIA T24F&G RIM = 795.67 INV = 791.56 (12" SW) INV = 791.46 (12" NW)
- 28 STA. 447+87, 21.8' RT. INLETS TA T24F&G RIM = 795.68 INV = 791.68 (12" NE)



- NOTES**
1. THE STATION AND OFFSET CALL-OUT FOR FLARED END SECTIONS IS MEASURED FROM THE TOE.
  2. LOCATION AND INVERT OF FIELD TILE INSPECTION STRUCTURE IS AN APPROXIMATE LOCATION BASED ON DRAIN TILE INVESTIGATION STUDY. FOR STRUCTURES 21A, 21B, AND 21C, SEE FIELD TILE INSPECTION STRUCTURE DETAIL ON SHEET 132.
  3. WORK ON ALL IDENTIFIED DRAIN TILES SHALL BE COORDINATED WITH THE LCSMC FIELD REPRESENTATIVE.
  4. ANY DRAIN TILES ENCOUNTERED DURING THE WORK WILL BE REPAIRED, REROUTED, OR CONNECTED TO THE STORM SEWER SYSTEM, AS APPROPRIATE, TO MAINTAIN DRAINAGE. FOR EACH DRAIN TILE ENCOUNTERED, REPORT TO THE LCSMC THE LOCATION, SIZE, MATERIAL, CONDITION, AMOUNT OF FLOW, DIRECTION OF FLOW, AND DEPTH OF COVER.
  5. FOR RIPRAP CLASSIFICATION, SEE EROSION AND SEDIMENT CONTROL SHEETS.
  6. STRUCTURES CALLED OFF WITH "RD" ARE RESTRICTED DEPTH STRUCTURES THAT WILL REQUIRE A FLAT SLAB TOP.

EX ELEVATION	793.47	792.20	792.50	791.20	791.50	790.30	791.00	790.00	790.60	790.30	791.21	790.40	790.90	791.60	793.60
PR PGL ELEVATION	801.47	792.37	800.75	792.00	800.02	791.24	793.30	790.99	796.57	790.06	789.76	789.77	791.22	796.26	793.65
LT DITCH ELEVATION		791.20													
RT DITCH ELEVATION		800.75													
STATION	443+50	444+00	444+50	445+00	445+50	446+00	446+50	447+00	447+50	448+00	448+50	449+00			