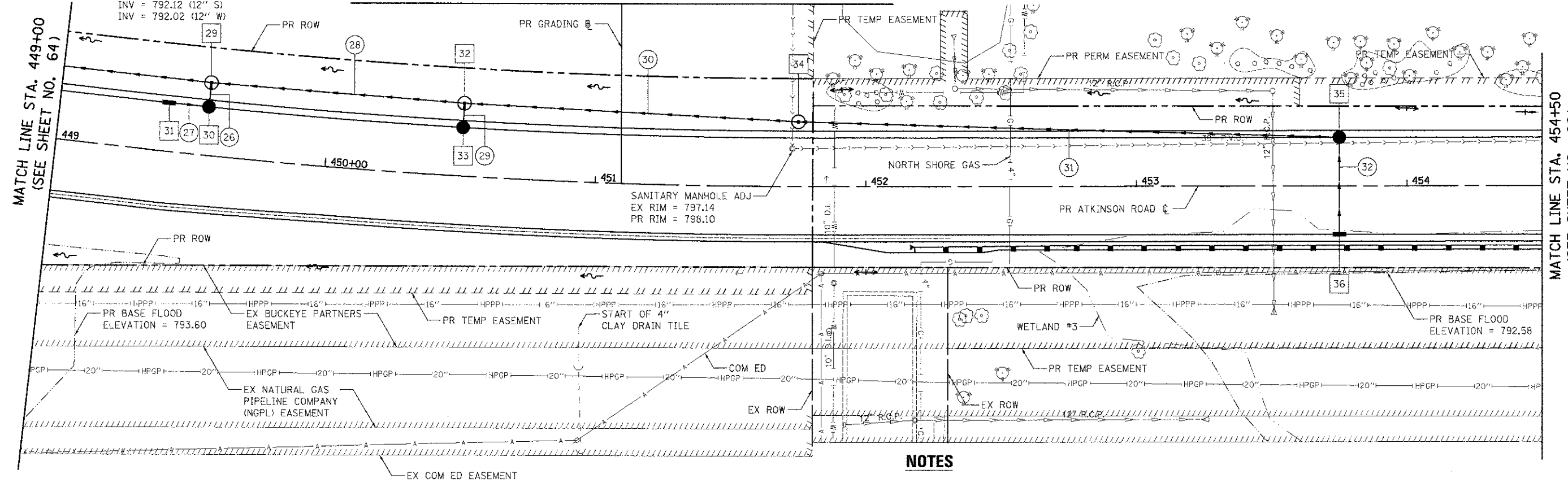




- 29 STA. 449+55, 27' LT. RD MAN TA 4 DIA T1F CL
RIM = 795.99
INV = 791.99 (12" E)
INV = 791.76 (18" N)
INV = 791.66 (18" SW)
- 30 STA. 449+55, 18' LT. RD CB TA 4 DIA T24F&G
RIM = 796.22
INV = 792.12 (12" S)
INV = 792.02 (12" W)
- 31 STA. 449+40, 18' LT. INLETS TA T24F&G
RIM = 796.24
INV = 792.24 (12" N)
- 32 STA. 450+50, 27' LT. RD MAN TA 4 DIA T1F CL
RIM = 796.48
INV = 792.65 (12" E)
INV = 792.13 (18" N)
INV = 792.03 (18" S)
- 33 STA. 450+50, 18' LT. CB TC T24F&G
RIM = 796.70
INV = 792.70 (12" W)
- 34 STA. 451+75, 24' LT. RD MAN TA 4 DIA T1F CL
RIM = 797.14
INV = 792.59 (18" NE)
INV = 792.49 (18" S)
- 35 STA. 453+75, 18' LT. RD CB TA 4 DIA T24F&G
RIM = 796.36
INV = 793.18 (12" E)
INV = 793.18 (18" SW)
- 36 STA. 453+75, 18' RT. INLETS TA T24F&G
RIM = 796.36
INV = 793.36 (12" W)

MATCH LINE STA. 17-15
(SEE SHEET NO. 75)

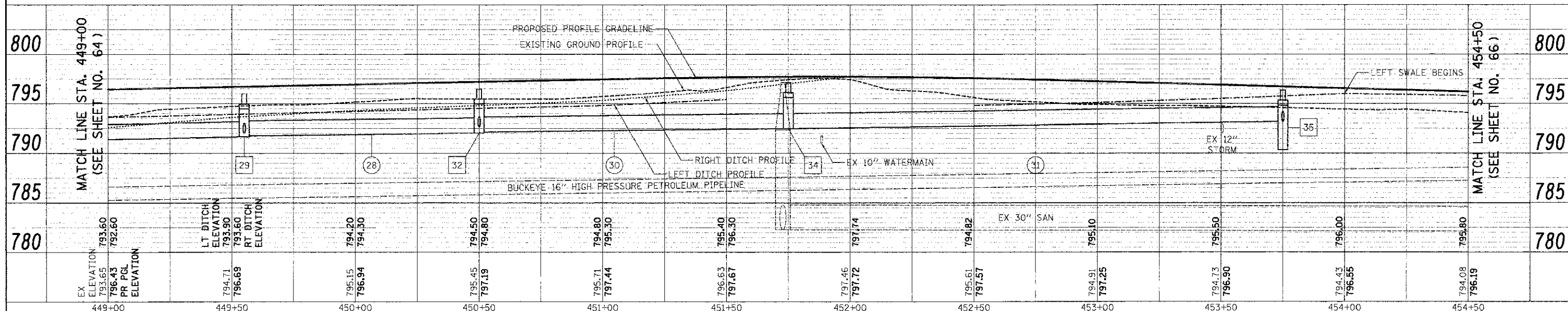


NOTES

1. WORK ON ALL IDENTIFIED DRAIN TILES SHALL BE COORDINATED WITH THE LCSMC FIELD REPRESENTATIVE.
2. ANY DRAIN TILES ENCOUNTERED DURING THE WORK WILL BE REPAIRED, REROUTED, OR CONNECTED TO THE STORM SEWER SYSTEM, AS APPROPRIATE, TO MAINTAIN DRAINAGE. FOR EACH DRAIN TILE ENCOUNTERED, REPORT TO THE LCSMC THE LOCATION, SIZE, MATERIAL, CONDITION, AMOUNT OF FLOW, DIRECTION OF FLOW, AND DEPTH OF COVER.
3. STRUCTURES CALLED OFF WITH "RD" ARE RESTRICTED DEPTH STRUCTURES THAT WILL REQUIRE A FLAT SLAB TOP.

- 26 3' - STORM SEW CL A 2, 12" @ 1.00%
T.B.F. = 0.4 CU. YD.
- 27 12' - STORM SEW CL A 2, 12" @ 1.00%
T.B.F. = 2.0 CU. YD.
- 28 90' - STORM SEW CL A 1, 18" @ 0.30%
T.B.F. = 0.0 CU. YD.
- 29 5' - STORM SEW CL A 1, 12" @ 1.00%
T.B.F. = 1.0 CU. YD.
- 30 120' - STORM SEW CL A 2, 18" @ 0.30%
T.B.F. = 0.0 CU. YD.
- 31 197' - STORM SEW WM REQ, 18" @ 0.30%
T.B.F. = 34.5 CU. YD.
- 32 36' - STORM SEW CL A 1, 12" @ 0.50%
T.B.F. = 4.8 CU. YD.

ATKINSON ROAD



EX ELEVATION 793.65 796.43 796.43	PR PCL ELEVATION 794.71 796.69 796.69	LT DITCH ELEVATION 793.90 793.90	RT DITCH ELEVATION 794.20 794.50 794.50	795.15 796.94 796.94	795.45 797.19 797.19	795.71 797.44 797.44	796.63 797.67 797.67	797.46 797.72 797.72	795.61 797.57 797.57	794.91 797.25 797.25	794.73 796.90 796.90	794.43 796.55 796.55	794.08 796.19 796.19
449+00	449+50	450+00	450+50	451+00	451+50	452+00	452+50	453+00	453+50	454+00	454+50	454+50	454+50



USER NAME = eds
FILE NAME = ...N2299-shr-dren04.dgn
PLOT DATE = 2/2/2012

DESIGNED - MJP
DRAWN - MJP
CHECKED - DNM
DATE 02/06/12

REVISED -
REVISED -
REVISED -
REVISED -

STATE OF ILLINOIS
DEPARTMENT OF TRANSPORTATION

ATKINSON ROAD
DRAINAGE & UTILITIES

SCALE: 1" = 20' SHEET NO. 4 OF 15 SHEETS STA. 449+00 TO STA. 454+50

F.A.U. RTE. 198	SECTION 00-00045-00-PV	COUNTY LAKE	TOTAL SHEETS 195	SHEET NO. 65
CONTRACT NO. 63640				FED. ROAD DIST. NO. 1 (ILLINOIS) FED. AID PROJECT