
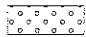
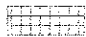
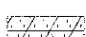



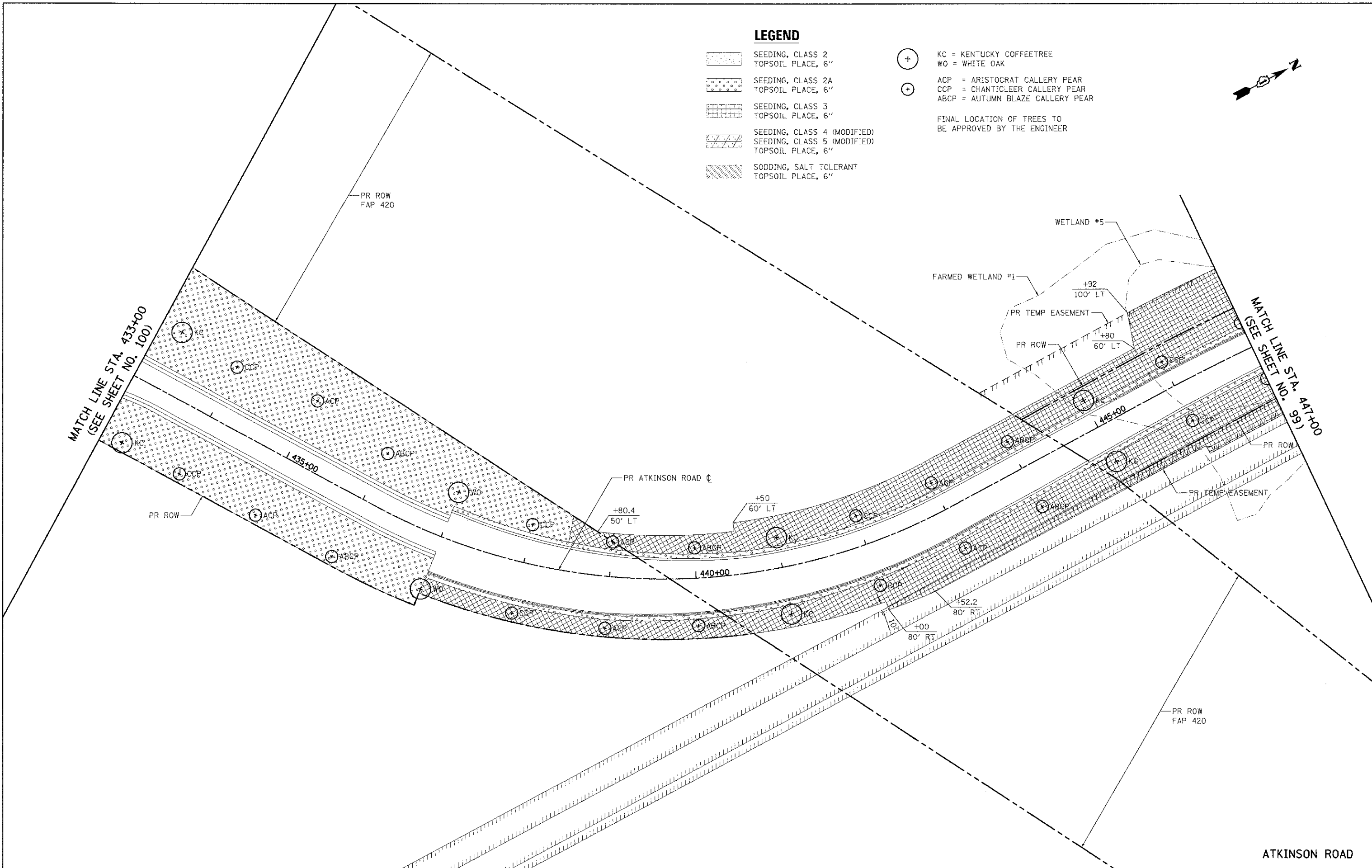


LEGEND

-  SEEDING, CLASS 2
TOPSOIL PLACE, 6"
-  SEEDING, CLASS 2A
TOPSOIL PLACE, 6"
-  SEEDING, CLASS 3
TOPSOIL PLACE, 6"
-  SEEDING, CLASS 4 (MODIFIED)
SEEDING, CLASS 5 (MODIFIED)
TOPSOIL PLACE, 6"
-  SODDING, SALT TOLERANT
TOPSOIL PLACE, 6"

-  KC = KENTUCKY COFFEETREE
WO = WHITE OAK
-  ACP = ARISTOCRAT CALLERY PEAR
CCP = CHANTICLEER CALLERY PEAR
ABCP = AUTUMN BLAZE CALLERY PEAR

FINAL LOCATION OF TREES TO BE APPROVED BY THE ENGINEER



USFR NAME = eds	DESIGNED - MJP	REVISED -
FILE NAME = ...12189-shs-1ndsep01.dgn	DRAWN - MJP	REVISED -
PLOT SCALE = 50.0000' / 1"	CHECKED - DNM	REVISED -
PLOT DATE = 2/2/2012	DATE = 02/06/12	REVISED -

**STATE OF ILLINOIS
DEPARTMENT OF TRANSPORTATION**

**ATKINSON ROAD
LANDSCAPING**

SCALE: 1" = 50' SHEET NO. 1 OF 5 SHEETS STA. 433+00 TO STA. 447+00

F.A.U. RTE. 198	SECTION 00-00045-00-PV	COUNTY LAKE	TOTAL SHEET NO. 195
			SHEETS NO. 98
			CONTRACT NO. 63640
FED. ROAD DIST. NO. 1 ILLINOIS FED. AID PROJECT			