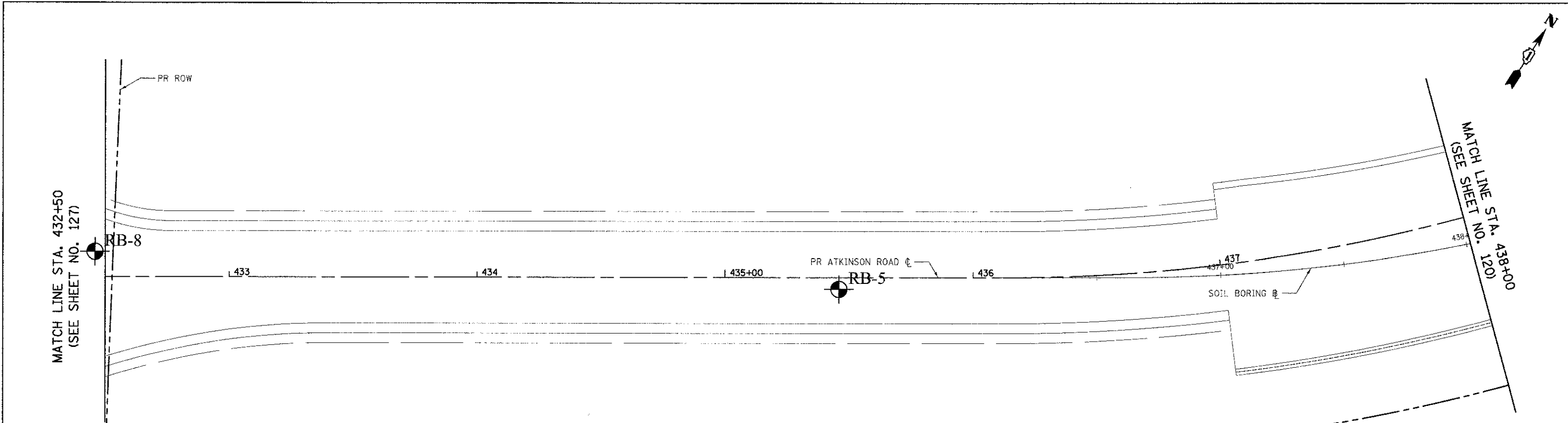


BY: [] DATE: []
 P. ANI []
 CHECKED BY: []
 ALIGNED CHECKED []
 NOTE BOOK []
 NO. []

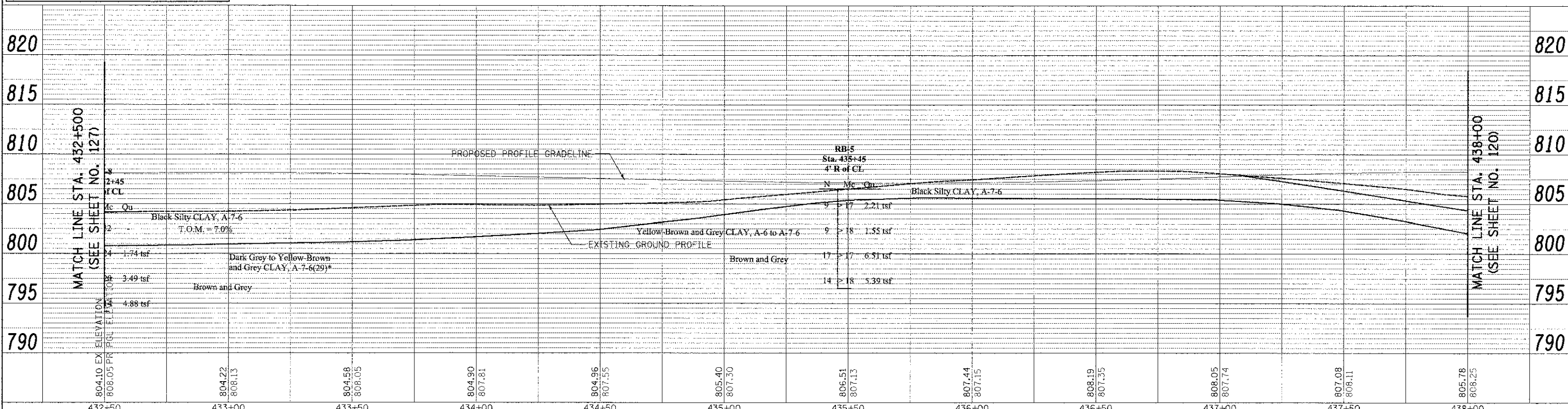
BY: [] DATE: []
 PROFILE []
 CHECKED BY: []
 NO. []



SOIL PROFILE DRAWING
 MIDLAND STANDARD ENGINEERING & TESTING, INC.
 ATKINSON ROAD IMPROVEMENTS STAGE 1A
 GRAYSLAKE, ILLINOIS
 MSET PROJECT NO. 88297
 JANUARY 2009

LEGEND

BORING NUMBER CORE NUMBER
 N = Standard Penetration Resistance, blows per foot
 Mc = Moisture Content
 Qu = Unconfined Compressive Strength, tons per square foot (tsf)
 Qc = Unconfined Compressive Strength, tons per square foot (tsf)
 * = Sample tested for Classification
 - = Water Level During Drilling
 * Pavement Materials refers to roadway bituminous pavements, materials, granular base course materials, granular shoulder materials, and minor roadway and bridge fill materials



804.10	808.05	804.22	808.13	804.58	808.05	804.90	807.81	804.96	807.55	805.40	807.30	806.51	807.13	807.44	807.15	808.19	807.35	808.05	807.74	807.08	808.11	805.78	808.25
432+50	433+00	433+50	434+00	434+50	435+00	435+50	436+00	436+50	437+00	437+50	438+00												