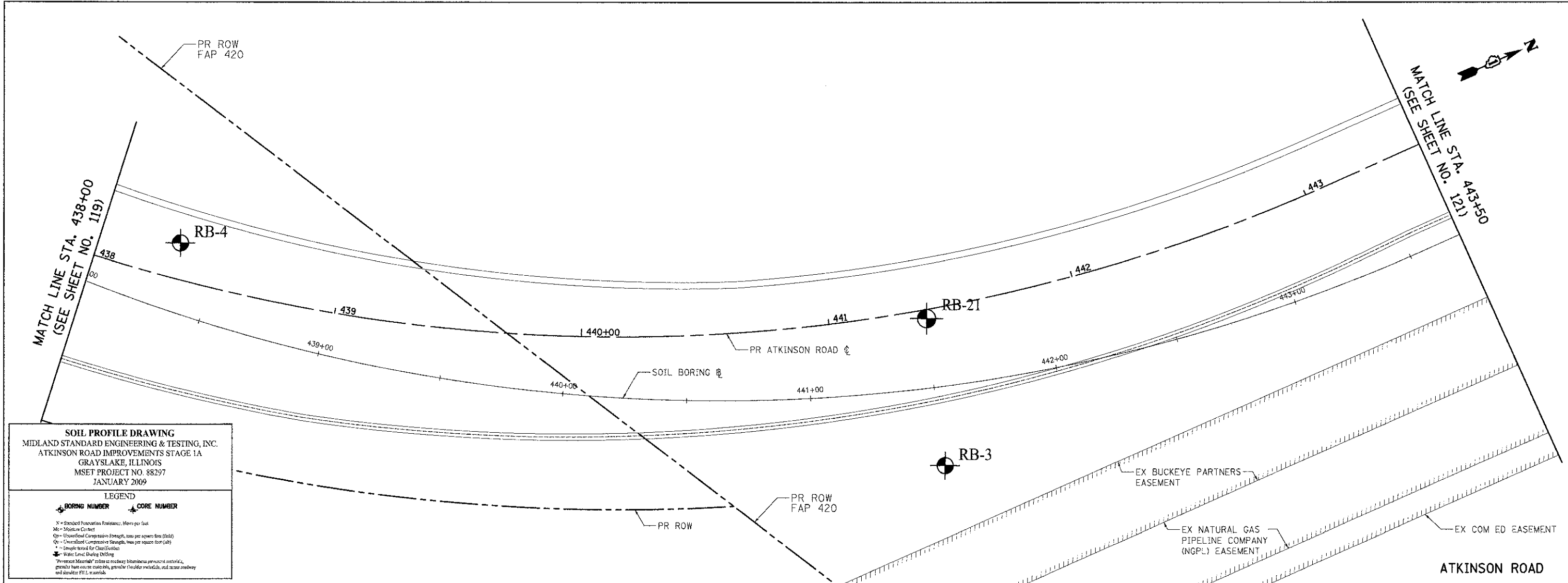


PROJECT NO.	88297
DATE	02/06/12
BY	eds
DESIGNED	MSET
DRAWN	MSET
CHECKED	MSET
DATE	02/06/12

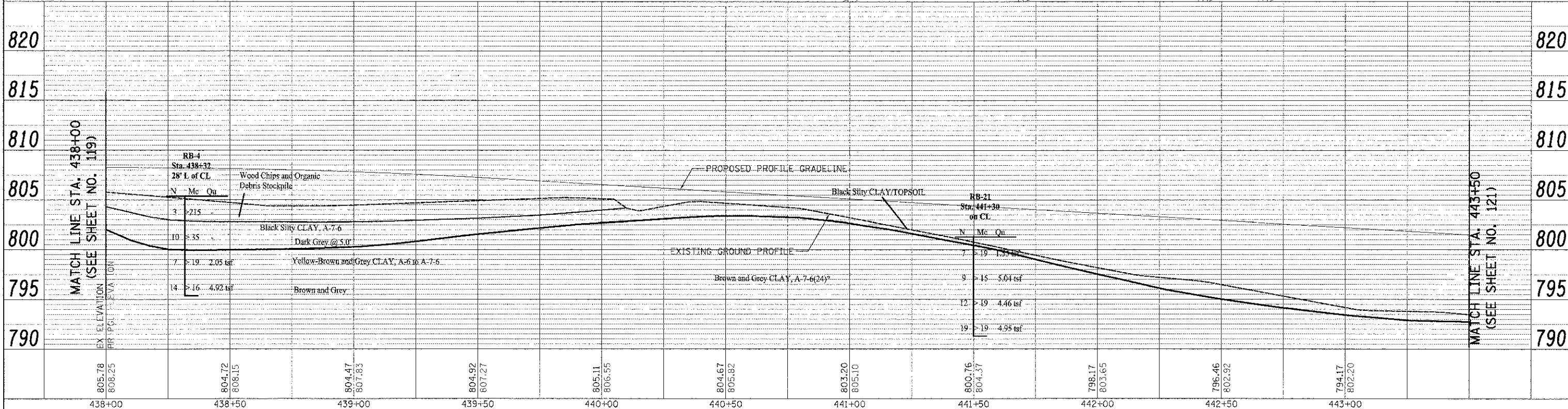
PROJECT NO.	88297
DATE	02/06/12
BY	eds
DESIGNED	MSET
DRAWN	MSET
CHECKED	MSET
DATE	02/06/12



SOIL PROFILE DRAWING
 MIDLAND STANDARD ENGINEERING & TESTING, INC.
 ATKINSON ROAD IMPROVEMENTS STAGE 1A
 GRAYSLAKE, ILLINOIS
 MSET PROJECT NO. 88297
 JANUARY 2009

LEGEND

- SOIL BORING #
- CORE NUMBER
- N = Standard Penetration Resistance, Blows per Foot
- Mc = Moisture Content
- Qu = Unconfined Compressive Strength, tons per square foot (tsf)
- Qc = Confined Compressive Strength, tons per square foot (tsf)
- W = Sample Wet Weight for Classification
- Water Table (if shown)
- "Proposed Materials" refers to roadway bituminous pavement materials, general base course materials, general shoulder materials, and minor roadway and shoulder FILL materials.



USER NAME: eds
 FILE NAME: ...2189-sh1-soil02.dgn
 PLOT SCALE: 20.0000" / 1"
 PLOT DATE: 2/2/2012

DESIGNED: MSET
 DRAWN: MSET
 CHECKED: MSET
 DATE: 02/06/12

REVISED: -
 REVISED: -
 REVISED: -
 REVISED: -

**STATE OF ILLINOIS
 DEPARTMENT OF TRANSPORTATION**

**ATKINSON ROAD
 SOIL BORING LOCATION PLAN & SOIL PROFILE**
 SCALE: 1" = 20' SHEET NO. 2 OF 13 SHEETS STA. 438+00 TO STA. 443+50

F.A.U. RTE.	SECTION	COUNTY	TOTAL SHEETS	SHEET NO.
198	00-00045-00-PV	LAKE	195	120
CONTRACT NO. 63640				
FED. ROAD DIST. NO. 1 (ILLINOIS) FED. AID PROJECT				