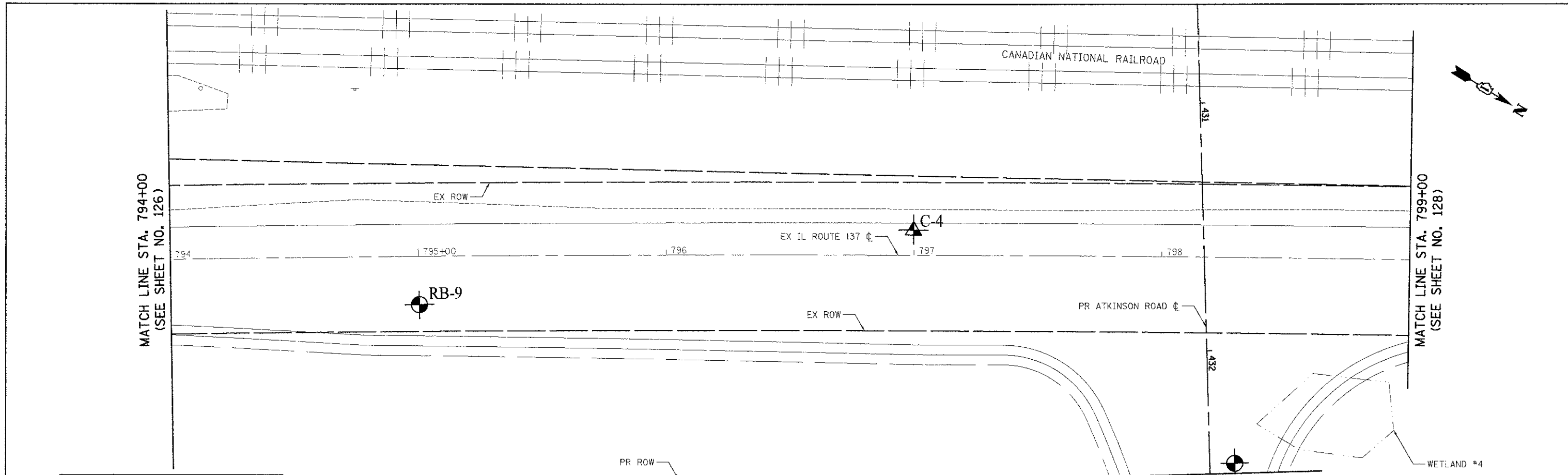


DATE: _____ BY: _____
 SURVEYED: _____
 CHECKED: _____
 NO. OF WAY CHECKED: _____
 NO. OF P.C. CHECKED: _____
 NO. OF P.T. CHECKED: _____

DATE: _____ BY: _____
 SURVEYED: _____
 CHECKED: _____
 NO. OF WAY CHECKED: _____
 NO. OF P.C. CHECKED: _____
 NO. OF P.T. CHECKED: _____



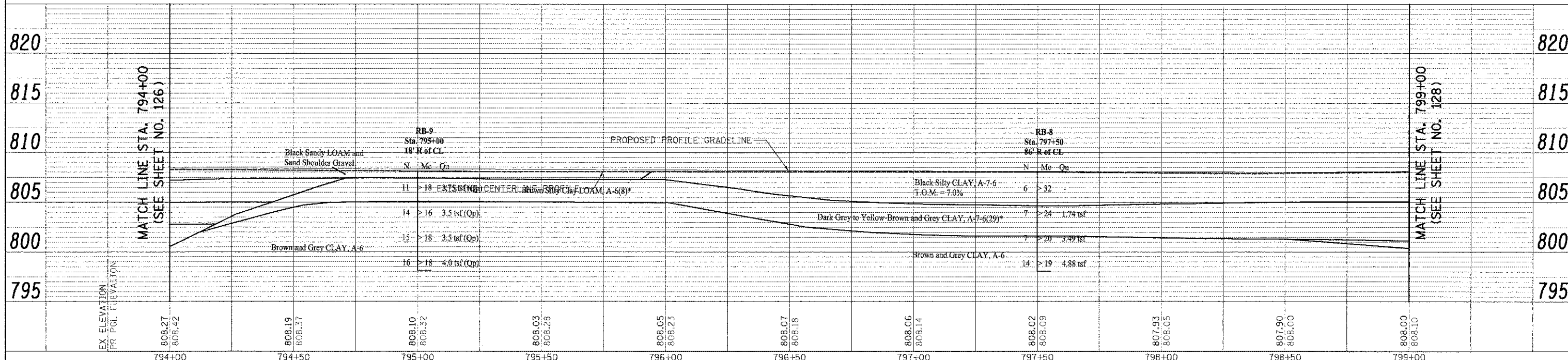
SOIL PROFILE DRAWING
 MIDLAND STANDARD ENGINEERING & TESTING, INC.
 ATKINSON ROAD IMPROVEMENTS STAGE 1A
 GRAYSLAKE, ILLINOIS
 MSET PROJECT NO. 88297
 JANUARY 2009

LEGEND

BORING NUMBER CORE NUMBER
 N = Standard Penetration Test, blows per foot
 Mc = Moisture Content
 Qp = Unconfined Compressive Strength, tons per square foot (tsf)
 Cc = Unconfined Compressive Strength, tons per square foot (tsf)
 * = Sample tested for Characterization
 Water Table (Drying Ceiling)
 * "Fracment Material" refers to roadway bituminous pavement materials, granular base course materials, granular shoulder materials, and minor roadway and shoulder FILL materials

ATKINSON ROAD
 MATCH LINE STA. 432+50
 (SEE SHEET NO. 119)

IL ROUTE 137



EX. ELEVATION
 PR. P.C. ELEVATION

USER NAME = eds
 FILE NAME = ... \2189-sht soil.B2.dgn
 PLOT SCALE = 20.0000' / 1" = 20'
 PLOT DATE = 2/2/2012

DESIGNED - MSET
 DRAWN - MSET
 CHECKED - MSET
 DATE - 02/06/12

REVISED -
 REVISED -
 REVISED -
 REVISED -

STATE OF ILLINOIS
 DEPARTMENT OF TRANSPORTATION

IL ROUTE 137
 SOIL BORING LOCATION PLAN & SOIL PROFILE

SCALE: 1" = 20' SHEET NO. 2 OF 5 SHEETS STA. 794+00 TO STA. 799+00

F.A.U. RTE. 198	SECTION 00-00045-00-PV	COUNTY LAKE	TOTAL SHEETS 195	SHEET NO. 127
CONTRACT NO. 63640			ILLINOIS FED. AID PROJECT	

