

F.A.P. RTE.	SECTION	COUNTY	TOTAL SHEETS	SHEET NO.
0336	00-00259-00-BT	KANE		1
FED. ROAD DIST. NO.	ILLINOIS	CONTRACT NO. 63667		

STATE OF ILLINOIS
DEPARTMENT OF TRANSPORTATION
DIVISION OF HIGHWAYS

**PLANS FOR PROPOSED
FEDERAL AID HIGHWAY**

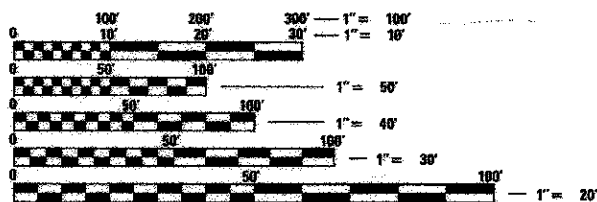
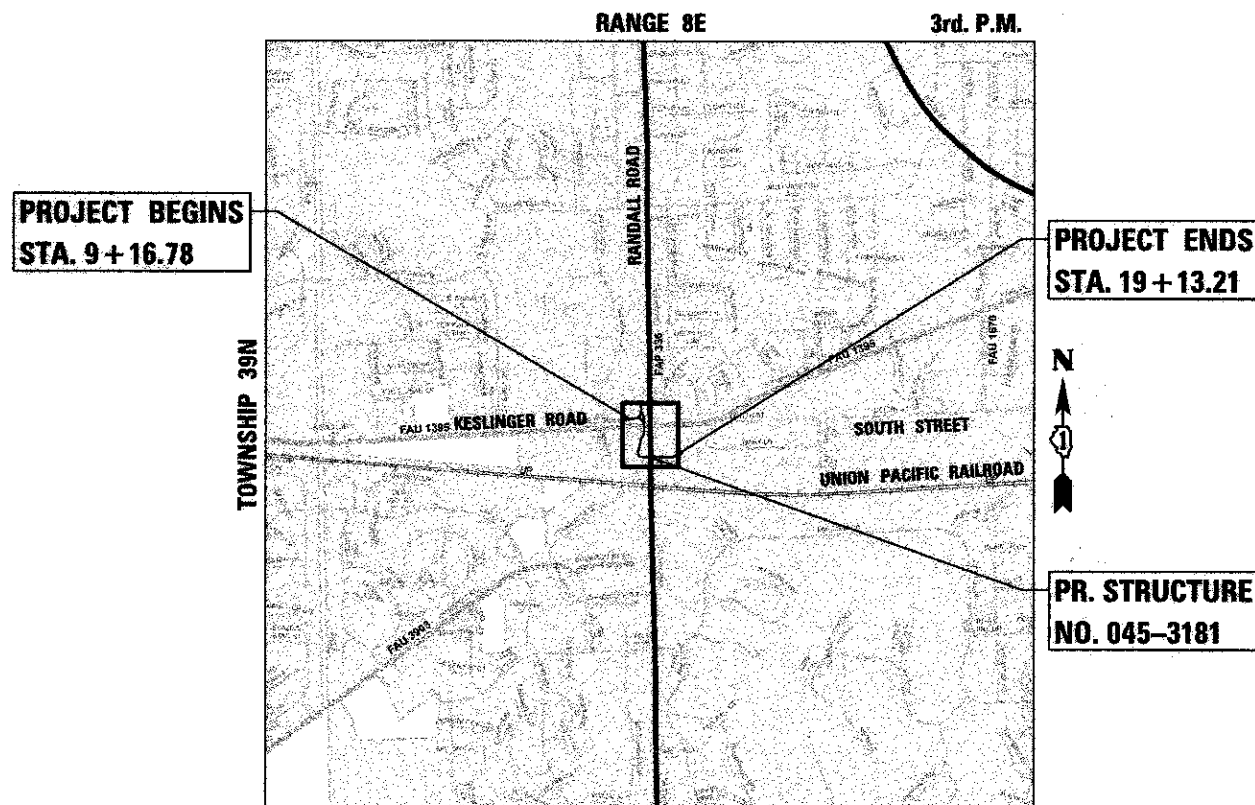
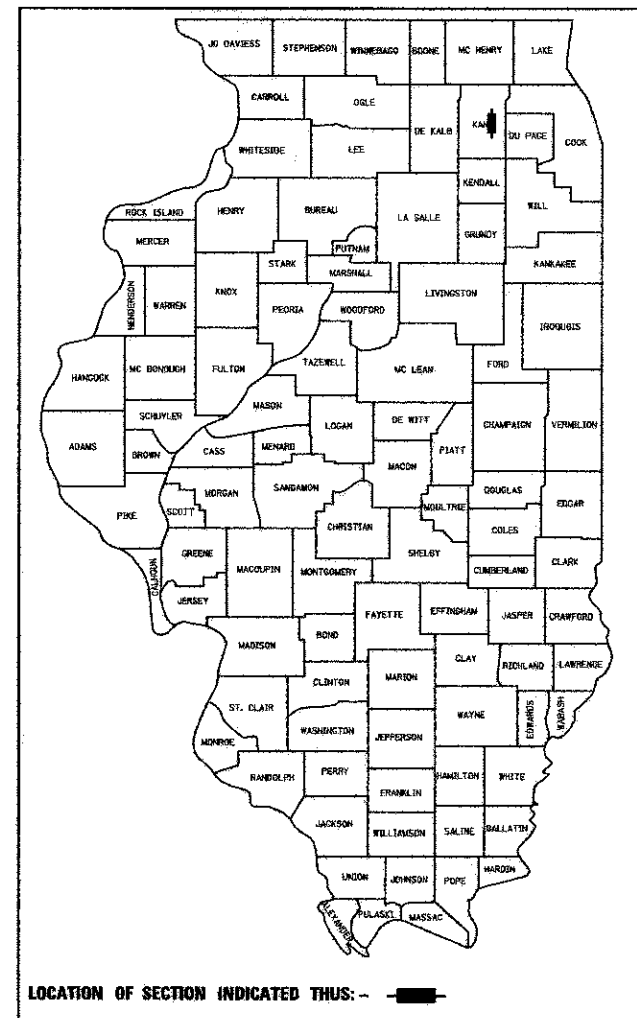
FOR INDEX OF SHEETS, SEE SHEET NO. 2

PROJECT LOCATED IN CITY OF GENEVA

RANDALL ROAD

DESIGN DESIGNATION: OTHER PRINCIPAL ARTERIAL
TRAFFIC VOLUME: 37,000 ADT
POSTED SPEED: 45 MPH

F.A.P. ROUTE 0336
(SOUTH STREET TRAIL AT RANDALL ROAD)
UNDERPASS
SECTION 00-00259-00-BT
PROJECT TE-00D1(805)
KANE COUNTY
JOB NO. C-91-586-09



FULL SIZE PLANS HAVE BEEN PREPARED USING STANDARD ENGINEERING SCALES. REDUCED SIZED PLANS WILL NOT CONFORM TO STANDARD SCALES. IN MAKING MEASUREMENTS ON REDUCED PLANS, THE ABOVE SCALES MAY BE USED.

J.U.L.I.E.
JOINT UTILITY LOCATION INFORMATION FOR EXCAVATION
1-800-892-0123
OR 811

GENEVA TOWNSHIP
PROJECT GROSS AND NET LENGTH = 996.4 LIN FT (0.189 MILE)
PROJECT LOCATED IN:
PARTS OF SECTIONS 5, 8, & 9, TOWNSHIP 39N, RANGE 8E, OF
THE THIRD PRINCIPAL MERIDIAN, KANE COUNTY, ILLINOIS

WILLS BURKE KELSEY ASSOCIATES LTD.
110 West Main Street, Suite 201
St. Charles, Illinois 60174
WBK

STATE OF ILLINOIS
DEPARTMENT OF TRANSPORTATION
DIVISION OF HIGHWAYS

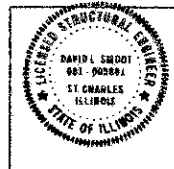
APPROVED DECEMBER 7, 2011
[Signature]
COUNTY ENGINEER, KANE COUNTY

PASSED MAY 21, 2012
[Signature]
DISTRICT 1 ENGINEER OF LOCAL ROADS & STREETS

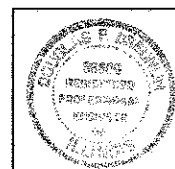
RELEASING FOR BID
BASED ON LIMITED
REVIEW MAY 23, 2012
[Signature]
DEPUTY DIRECTOR OF HIGHWAYS, REGION 1 ENGINEER

PROGRAM AND OFFICE ENGINEER: CHARLES F. RIDDLER, P.E. (847) 705-4406 SCHAUMBURG, IL

CONTRACT NO. 63667



DECEMBER 6, 2011
[Signature]
DAVID SMOOT
ILLINOIS LICENSED STRUCTURAL ENGINEER NO. 081-005861
EXPIRATION DATE 11-30-2012



DECEMBER 6, 2011
[Signature]
DOUGLAS P. BREUNLIN
ILLINOIS REG. PROFESSIONAL ENGINEER NO. 062-036608
EXPIRATION DATE 11-30-2013

PRINTED BY THE AUTHORITY
OF THE STATE OF ILLINOIS