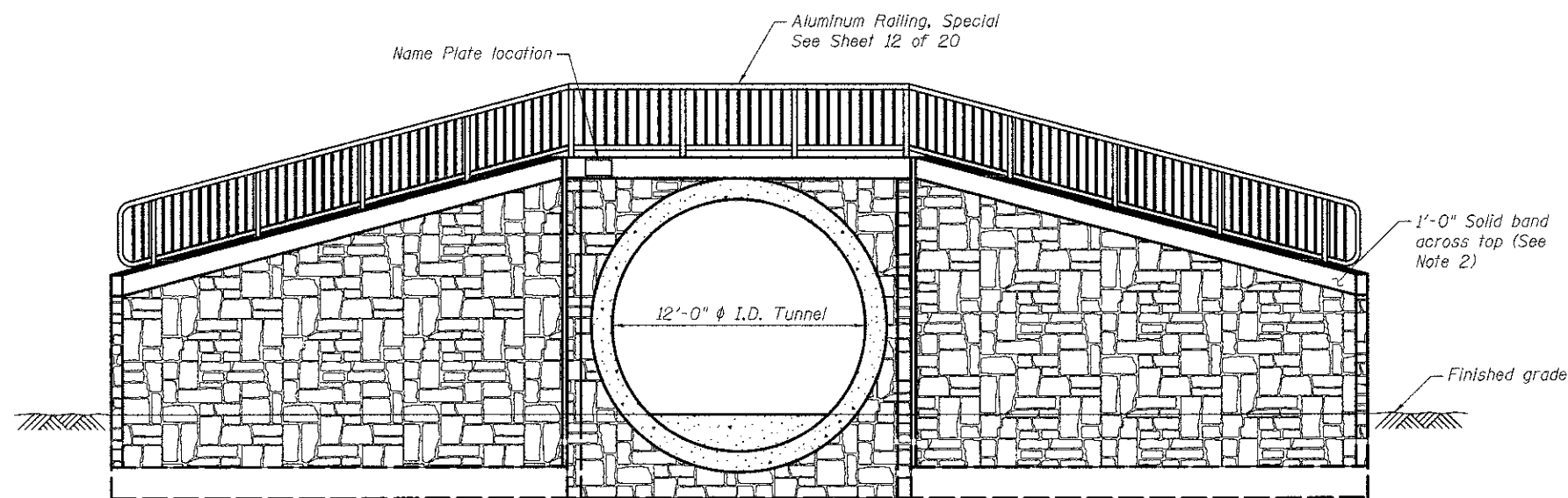


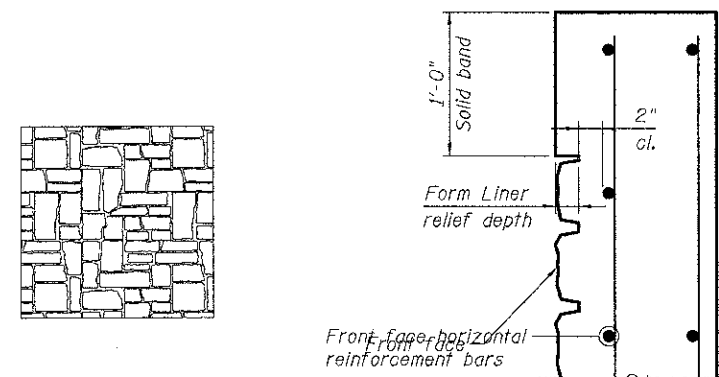
ELEVATION

West End Section with 45° Wingwalls



ELEVATION

East End Section with 60° Wingwalls



ASHLAR STONE

SECTION THROUGH HEADWALL/WINGWALL

FORM LINER DETAILS

BILL OF MATERIAL

Item	Unit	Total
Form Liner Textured Surface	Sq. Ft.	1,235
Staining Concrete Structures	Sq. Yd.	134
Anti-Graffiti Protection System	Sq. Ft.	1,201

NOTES

- The provisions for Staining Concrete Structures, which includes the staining of the form lined texture surface, the exposed ends of tunnel pipe and the solid band across the headwalls and wingwalls, is outlined in the Special Provision "Form Liner Textured Surface."
- The solid band across the top of the headwalls and wingwalls, which includes the top, front and side faces, shall be stained a solid color. See the Special Provision.

FILE NAME = W:\Projects\2012\100091_SouthSPETI\cadd\Structure\1_Dgn\Final\100091-63667-03-arch.dwg
 WILLS BURKE KELSEY ASSOCIATES LTD.
 116 West Main Street, Suite 201
 St. Charles, Illinois 60174
 (630) 443-7795

WILLS BURKE KELSEY ASSOCIATES LTD.
 116 West Main Street, Suite 201
 St. Charles, Illinois 60174
 (630) 443-7795

USER NAME = rperrett	DESIGNED - DLS	REVISED -
	CHECKED - AEU	REVISED -
PLOT SCALE =	DRAWN - DLS	REVISED -
PLOT DATE = 5/11/2012	CHECKED - AEU	REVISED -

**STATE OF ILLINOIS
 DEPARTMENT OF TRANSPORTATION**

**ARCHITECTURAL DETAILS - TUNNEL END SECTIONS
 STRUCTURE NO. 045-3181**

SHEET NO. 13 OF 20 SHEETS

F.A.P. RTE.	SECTION	COUNTY	TOTAL SHEETS	SHEET NO.
0336	00-00259-00-BT	KANE	79	41
FED. ROAD DIST. NO.			ILLINOIS FED. AID PROJECT	
CONTRACT NO. 63667				