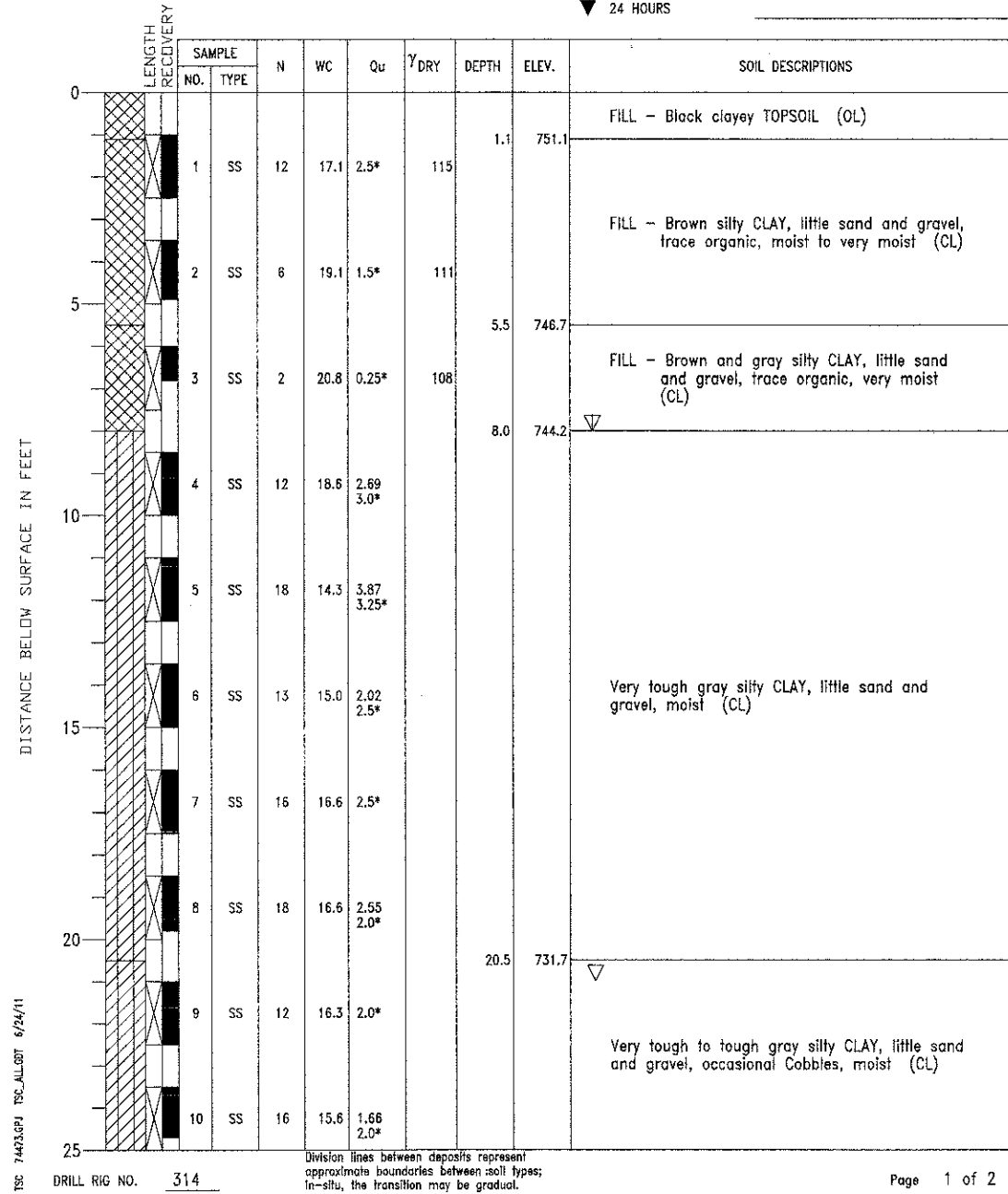


PROJECT South Street Trail Extension, Geneva, Illinois  
 CLIENT Wills Burke Kelsey Associates, Ltd., St. Charles, Illinois  
 BORING 3 DATE STARTED 1-25-10 DATE COMPLETED 1-25-10 JOB L-74,473

ELEVATIONS  
 GROUND SURFACE 752.2  
 END OF BORING 722.2

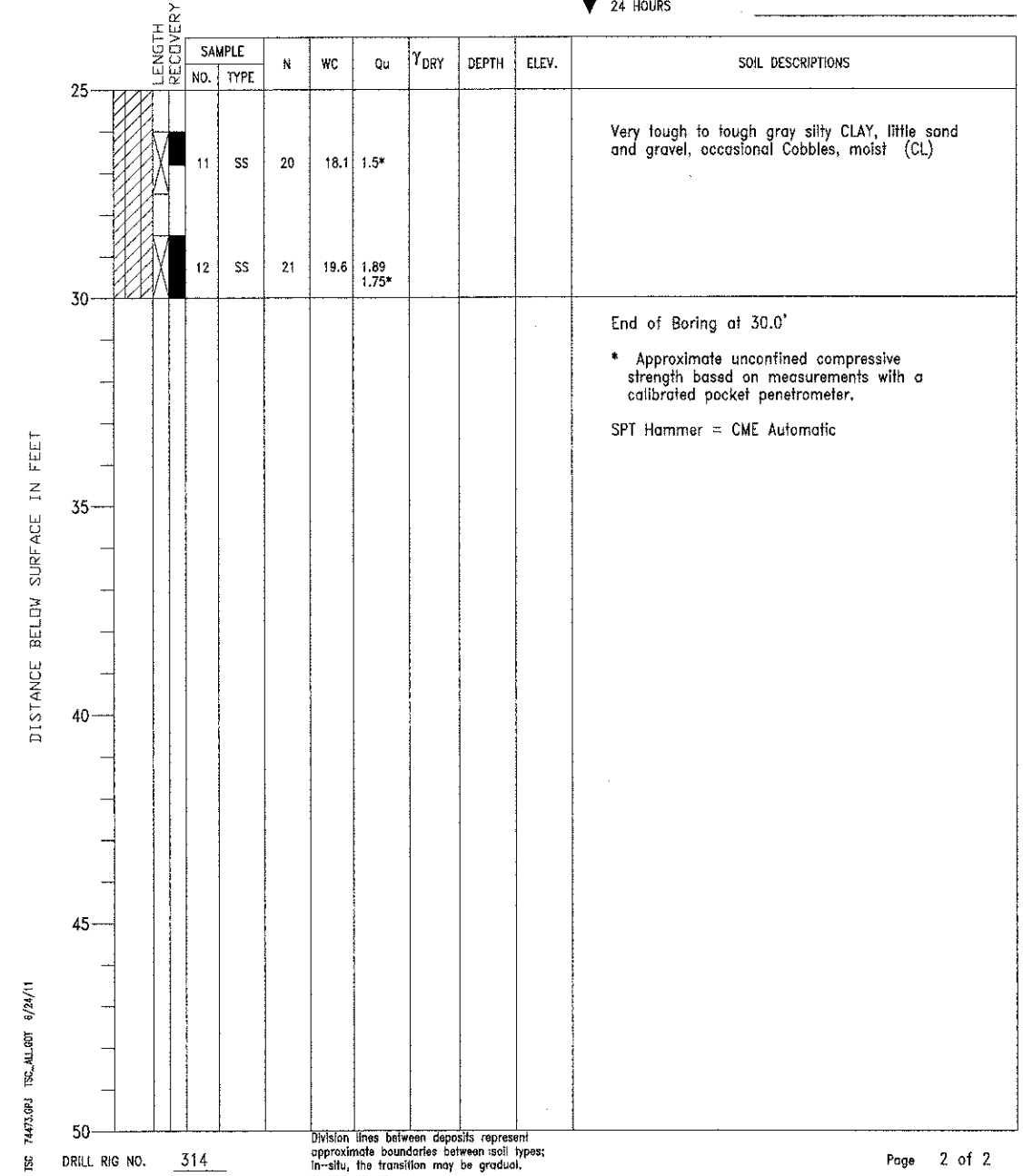
WATER LEVEL OBSERVATIONS  
 WHILE DRILLING 8.0'  
 AT END OF BORING 21.0'  
 24 HOURS



PROJECT South Street Trail Extension, Geneva, Illinois  
 CLIENT Wills Burke Kelsey Associates, Ltd., St. Charles, Illinois  
 BORING 3 DATE STARTED 1-25-10 DATE COMPLETED 1-25-10 JOB L-74,473

ELEVATIONS  
 GROUND SURFACE 752.2  
 END OF BORING 722.2

WATER LEVEL OBSERVATIONS  
 WHILE DRILLING 8.0'  
 AT END OF BORING 21.0'  
 24 HOURS



FILE NAME = W:\Projects\2010\100001\_SouthStreetTrail\Drawings\100001\_SouthStreetTrail.dwg

**WILLS BURKE KELSEY ASSOCIATES LTD.**  
 116 West Main Street, Suite 201  
 St. Charles, Illinois 60174  
 (630) 443-7755

USER NAME = nporris	DESIGNED -	REVISED -
PLOT SCALE =	CHECKED -	REVISED -
PLOT DATE = 5/11/2012	DRAWN - DLS	REVISED -
	CHECKED - AEU	REVISED -

**STATE OF ILLINOIS  
 DEPARTMENT OF TRANSPORTATION**

**SOIL BORING LOGS 1  
 STRUCTURE NO. 045-3181**

SHEET NO. 14 OF 20 SHEETS

F.A.P. RTE.	SECTION	COUNTY	TOTAL SHEETS	SHEET NO.
0336	00-00259-00-BT	KANE	79	42
CONTRACT NO. 63667				
FED. ROAD DIST. NO. ILLINOIS FED. AID PROJECT				