

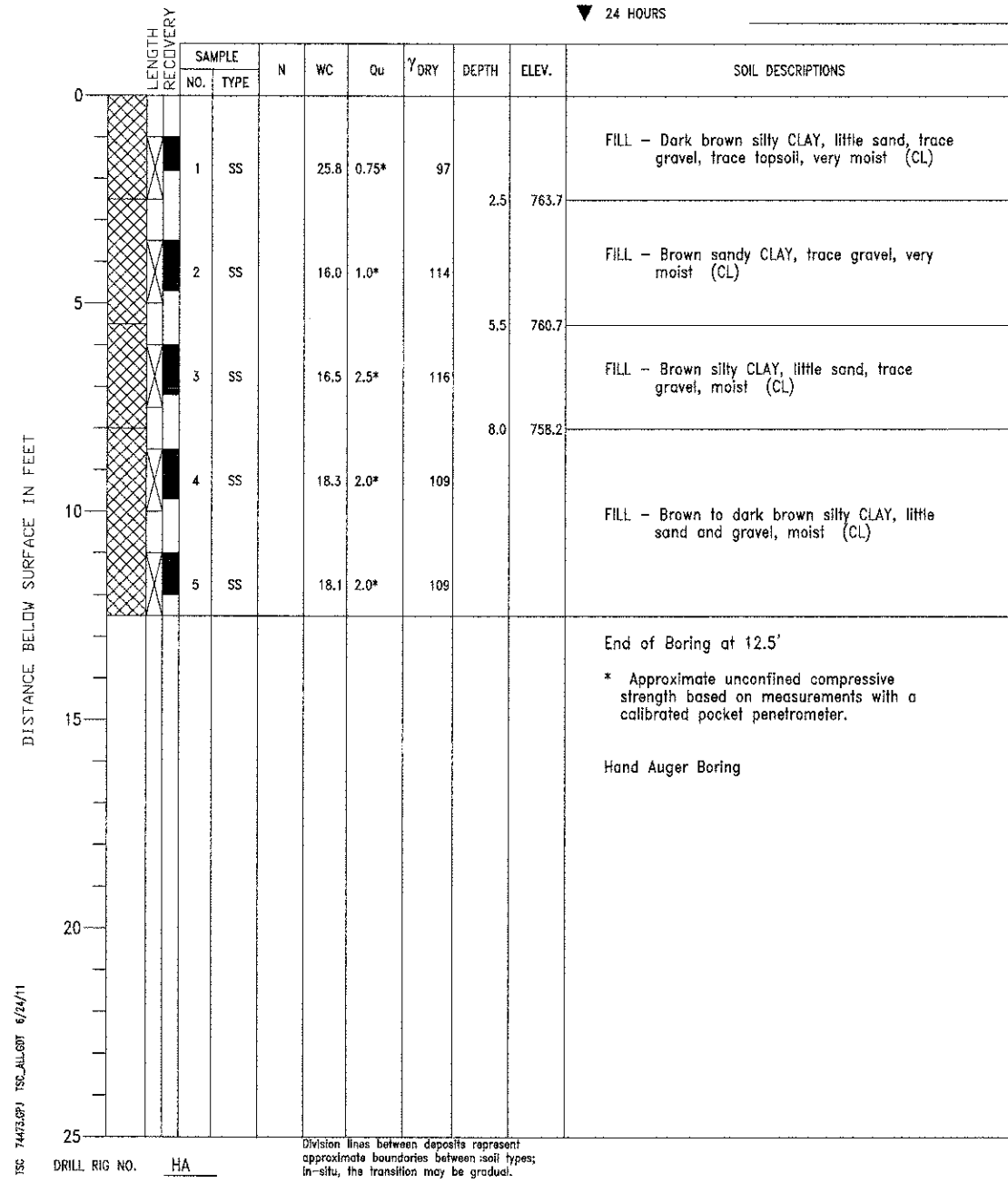
PROJECT South Street Trail Extension, Geneva, Illinois  
 CLIENT Wills Burke Kelsey Associates, Ltd., St. Charles, Illinois



BORING 101 DATE STARTED 2-11-10 DATE COMPLETED 2-11-10 JOB L-74,473

ELEVATIONS  
 GROUND SURFACE 766.2  
 END OF BORING 753.7

WATER LEVEL OBSERVATIONS  
 ▽ WHILE DRILLING Dry  
 ▽ AT END OF BORING Dry  
 ▽ 24 HOURS



DRILL RIG NO. HA  
 Division lines between deposits represent approximate boundaries between soil types; in-situ, the transition may be gradual.

FILE NAME = M:\Projects\2011\020991\_SouthStTrail\Structural\Drawings\0453181-63667-035-SoilBoring\_2.dgn

**WILLS BURKE KELSEY ASSOCIATES LTD.**  
 116 West Main Street, Suite 201  
 St. Charles, Illinois 60174  
 (630) 443-7765

USER NAME = rparms	DESIGNED -	REVISED -
PLOT SCALE #	CHECKED -	REVISED -
PLOT DATE = 5/11/2012	DRAWN - DLS	REVISED -
	CHECKED - AEU	REVISED -

**STATE OF ILLINOIS  
 DEPARTMENT OF TRANSPORTATION**

**SOIL BORING LOGS II  
 STRUCTURE NO. 045-3181**

SHEET NO. 15 OF 20 SHEETS

F.A.P. RTE.	SECTION	COUNTY	TOTAL SHEETS	SHEET NO.
0336	00-00259-00-BT	KANE	79	43
CONTRACT NO. 63667				
FED. ROAD DIST. NO. ILLINOIS FED. AID PROJECT				