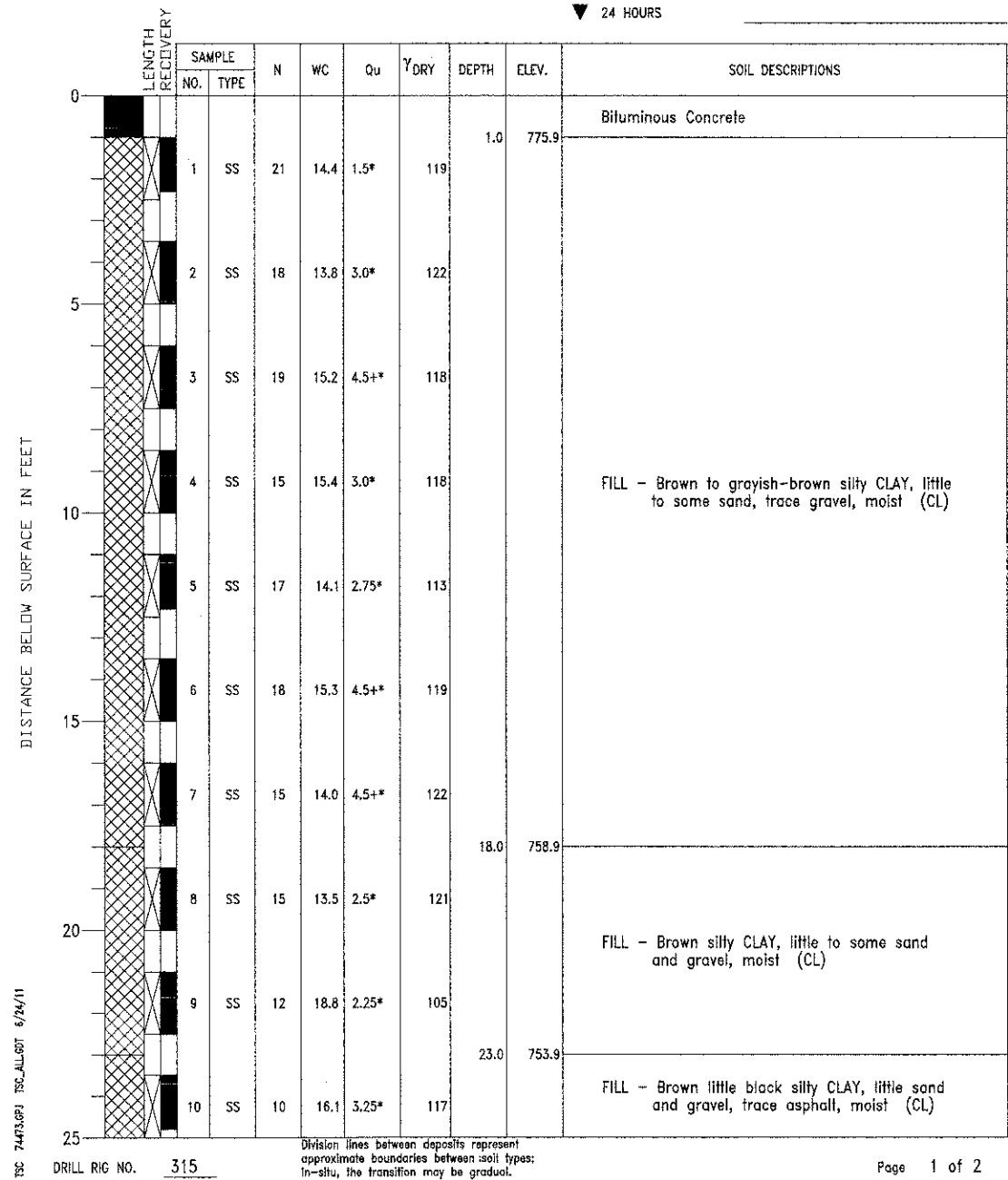


PROJECT South Street Trail Extension, Geneva, Illinois  
 CLIENT Wills Burke Kelsey Associates, Ltd., St. Charles, Illinois  
 BORING 4 DATE STARTED 2-1-10 DATE COMPLETED 2-1-10 JOB L-74,473

ELEVATIONS  
 GROUND SURFACE 776.9  
 END OF BORING 726.9

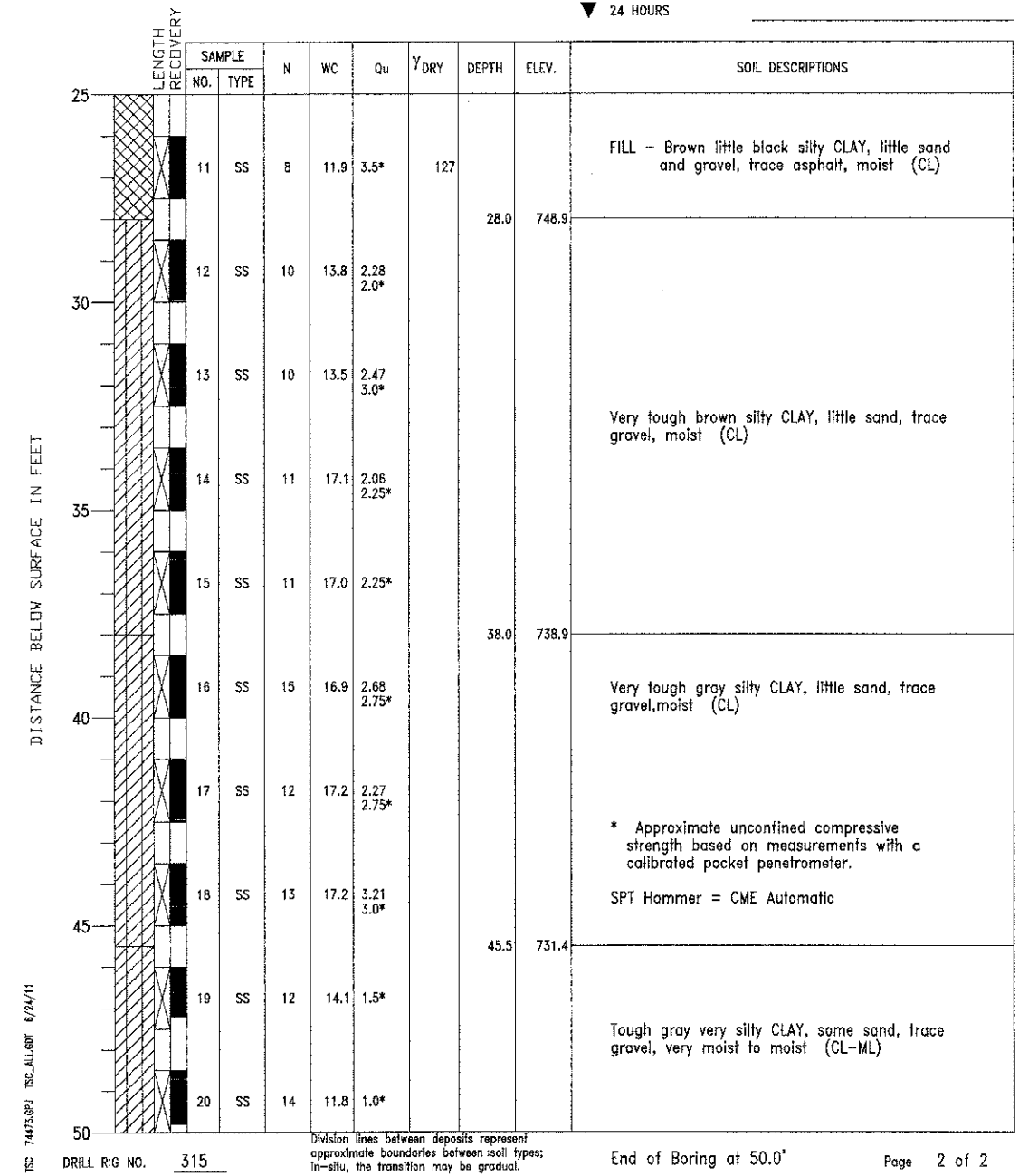
WATER LEVEL OBSERVATIONS  
 WHILE DRILLING Dry  
 AT END OF BORING Dry  
 24 HOURS



PROJECT South Street Trail Extension, Geneva, Illinois  
 CLIENT Wills Burke Kelsey Associates, Ltd., St. Charles, Illinois  
 BORING 4 DATE STARTED 2-1-10 DATE COMPLETED 2-1-10 JOB L-74,473

ELEVATIONS  
 GROUND SURFACE 776.9  
 END OF BORING 726.9

WATER LEVEL OBSERVATIONS  
 WHILE DRILLING Dry  
 AT END OF BORING Dry  
 24 HOURS



I:\Projects\2010\0809\01\_SouthStreetTrail\Structural\Drawings\Boring\Boring\_3.dwg  
 TSC 74473.GPJ TSC ALL.GPJ 6/24/11  
 WBK 118 West Main Street, Suite 201  
 St. Charles, Illinois 62454  
 (630) 443-7755

Division lines between deposits represent approximate boundaries between soil types; in-situ, the transition may be gradual. Page 1 of 2

Division lines between deposits represent approximate boundaries between soil types; in-situ, the transition may be gradual. End of Boring at 50.0' Page 2 of 2