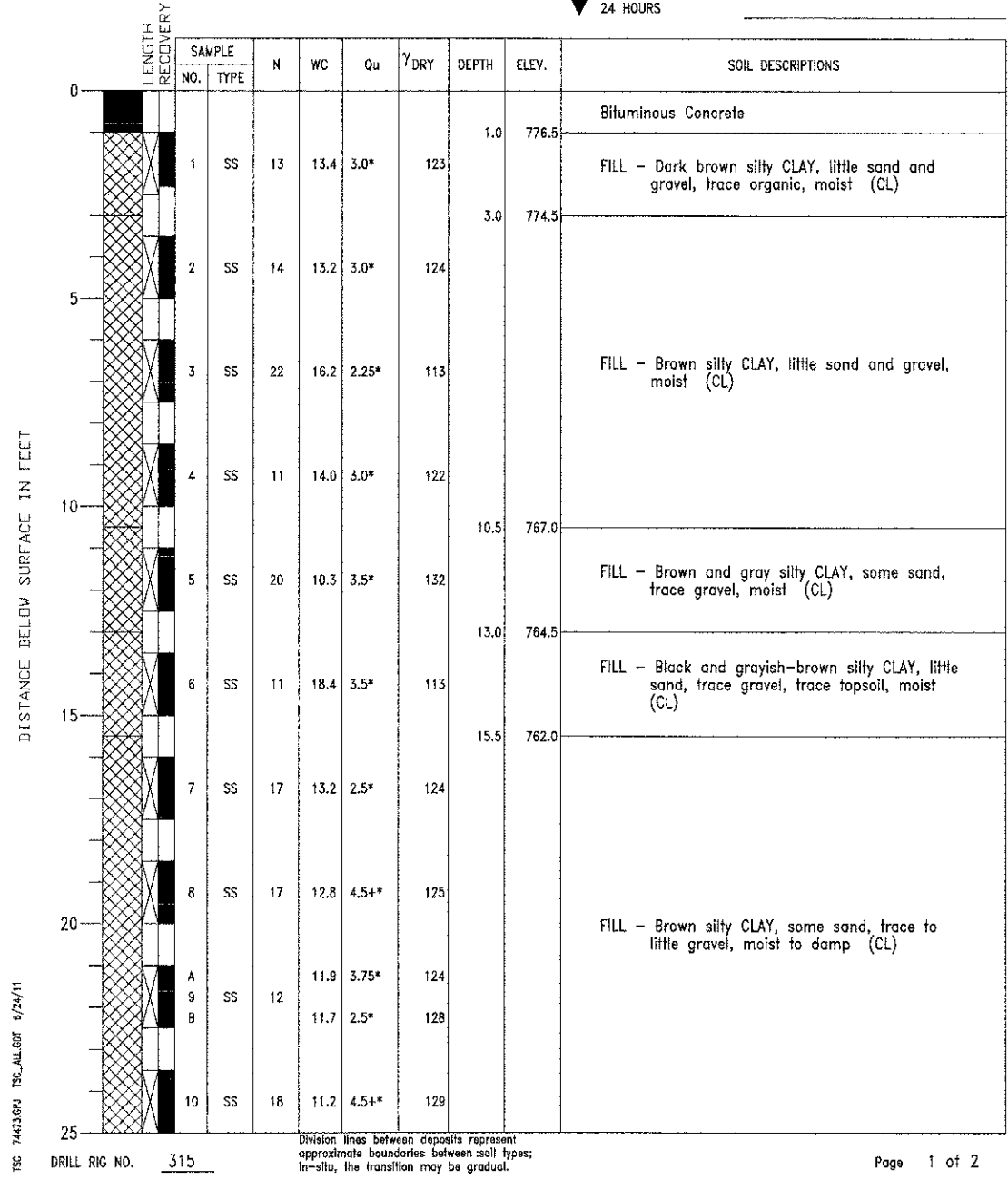


PROJECT South Street Trail Extension, Geneva, Illinois
 CLIENT Wills Burke Kelsey Associates, Ltd., St. Charles, Illinois
 BORING 5 DATE STARTED 1-27-10 DATE COMPLETED 1-27-10 JOB L-74,473

ELEVATIONS
 GROUND SURFACE 777.5
 END OF BORING 727.5

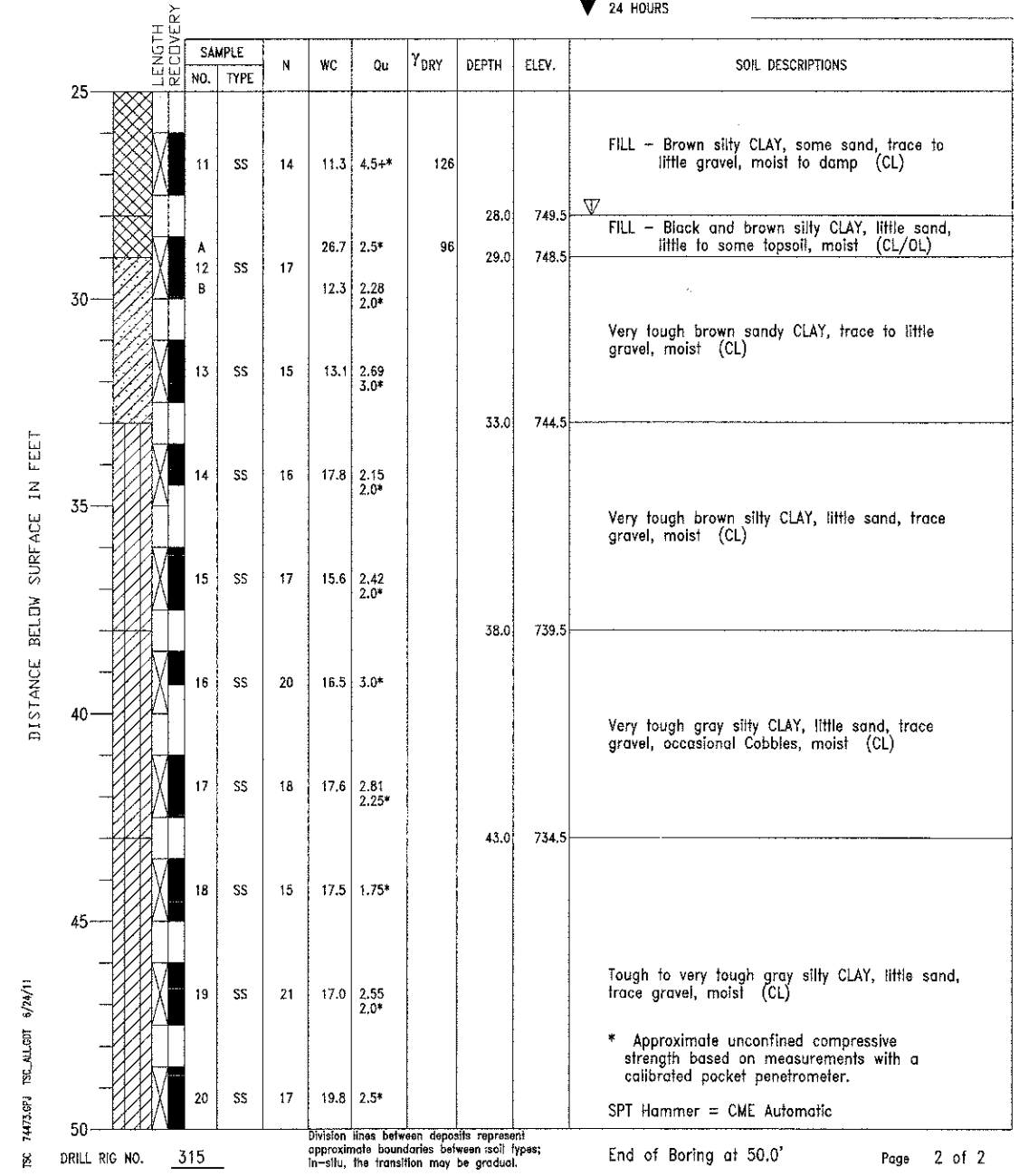
WATER LEVEL OBSERVATIONS
 WHILE DRILLING 28.0'
 AT END OF BORING Dry
 24 HOURS



PROJECT South Street Trail Extension, Geneva, Illinois
 CLIENT Wills Burke Kelsey Associates, Ltd., St. Charles, Illinois
 BORING 5 DATE STARTED 1-27-10 DATE COMPLETED 1-27-10 JOB L-74,473

ELEVATIONS
 GROUND SURFACE 777.5
 END OF BORING 727.5

WATER LEVEL OBSERVATIONS
 WHILE DRILLING 28.0'
 AT END OF BORING Dry
 24 HOURS



FILE NAME = \\A:\Project\42810\102001_SouthStTrail\Drawings\0453181-63667-017-SoilBoring-4.dgn