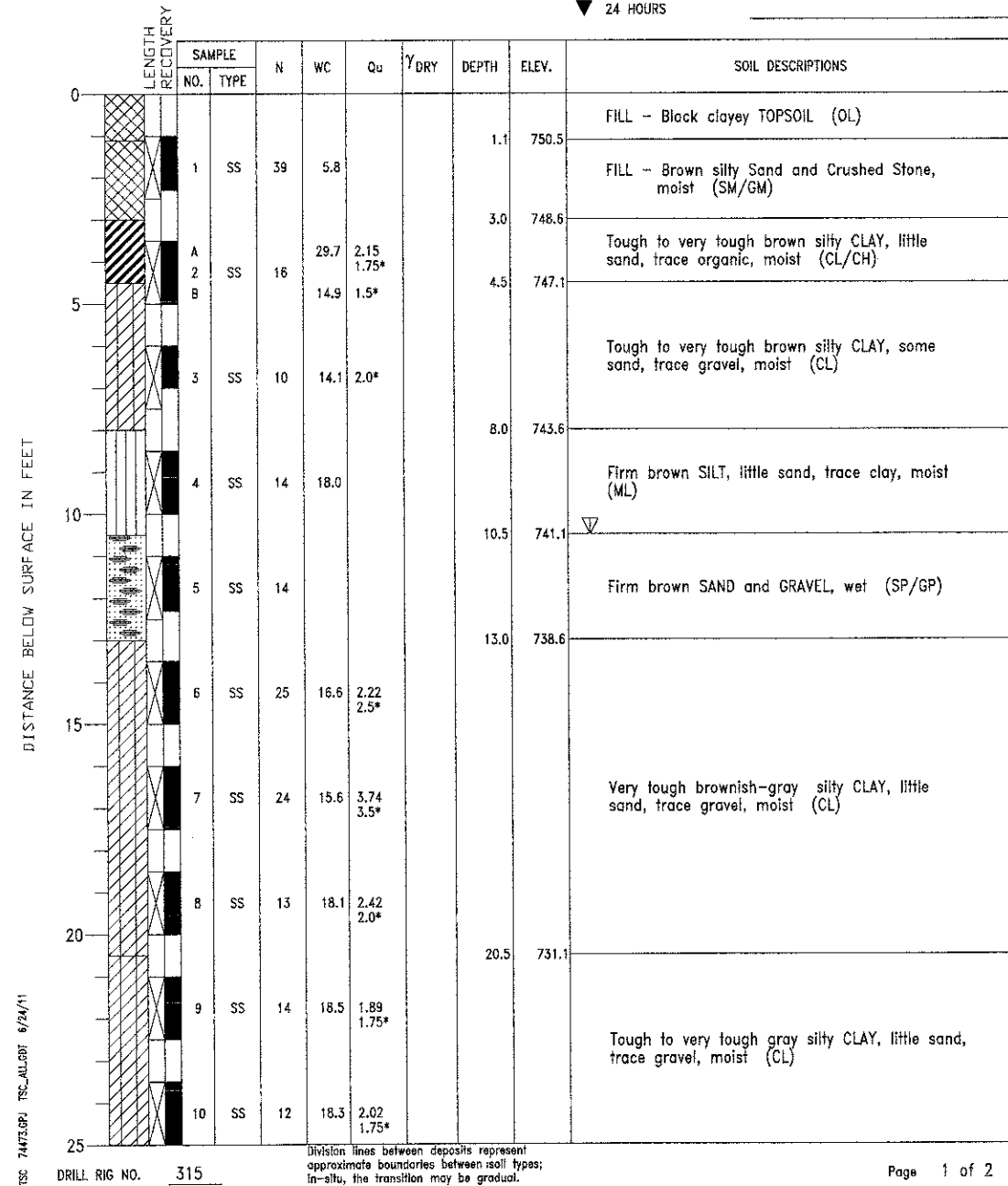


PROJECT South Street Trail Extension, Geneva, Illinois
 CLIENT Wills Burke Kelsey Associates, Ltd., St. Charles, Illinois
 BORING 7 DATE STARTED 1-20-10 DATE COMPLETED 1-20-10 JOB L-74,473

ELEVATIONS
 GROUND SURFACE 751.6
 END OF BORING 721.6

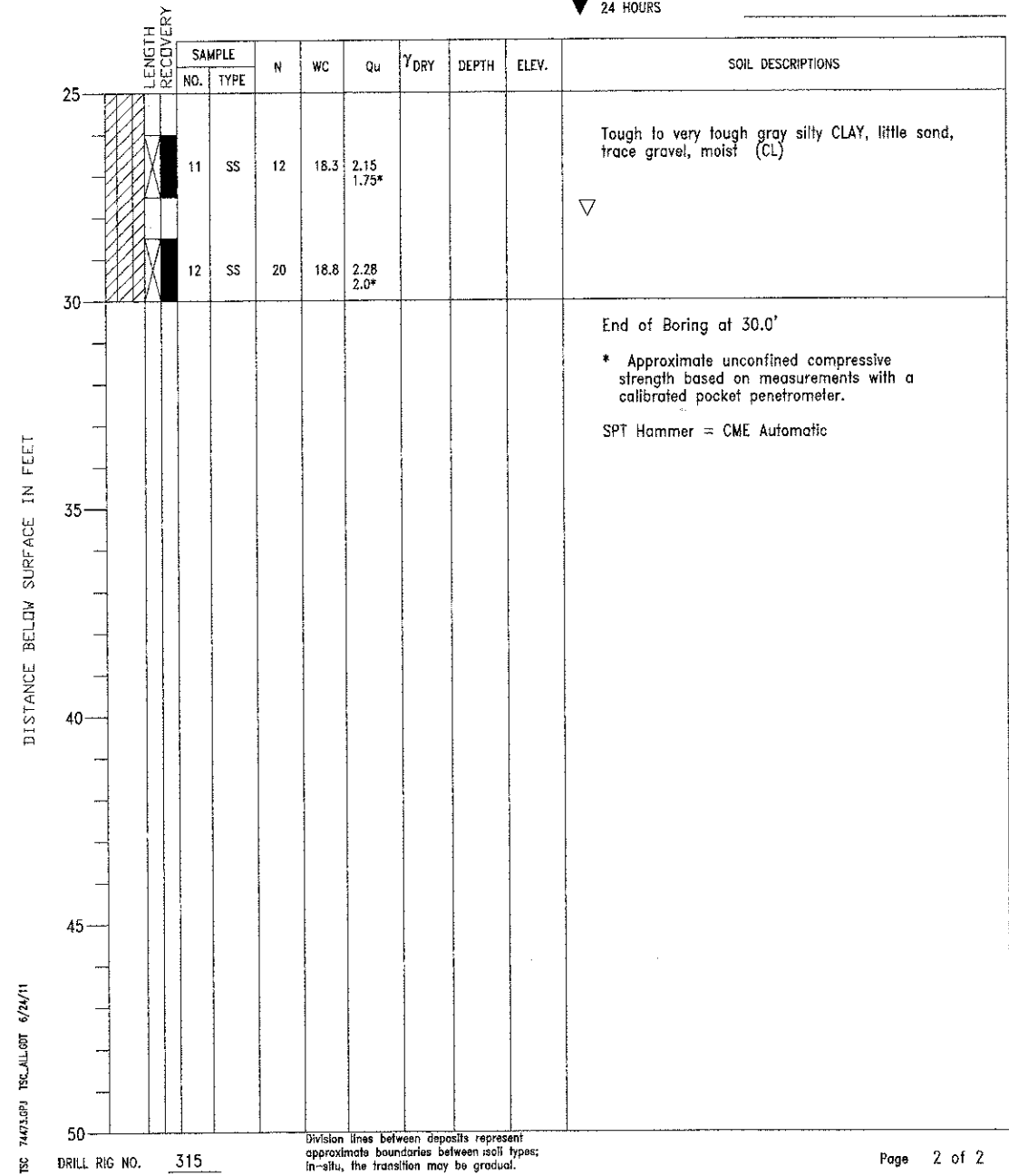
WATER LEVEL OBSERVATIONS
 WHILE DRILLING 10.5'
 AT END OF BORING 28.0'
 24 HOURS



PROJECT South Street Trail Extension, Geneva, Illinois
 CLIENT Wills Burke Kelsey Associates, Ltd., St. Charles, Illinois
 BORING 7 DATE STARTED 1-20-10 DATE COMPLETED 1-20-10 JOB L-74,473

ELEVATIONS
 GROUND SURFACE 751.6
 END OF BORING 721.6

WATER LEVEL OBSERVATIONS
 WHILE DRILLING 10.5'
 AT END OF BORING 28.0'
 24 HOURS



FILE NAME = M:\Projects\2010\180001_SouthStreetTrailExtension\Drawings\Boring-7.dgn

WILLS BURKE KELSEY ASSOCIATES LTD.
 116 West Main Street, Suite 201
 St. Charles, Illinois 60174
 (630) 445-7755

USER NAME = nparis	DESIGNED -	REVISED -
PLOT SCALE =	CHECKED -	REVISED -
PLOT DATE = 5/11/2012	DRAWN - DLS	REVISED -
	CHECKED - AEU	REVISED -

STATE OF ILLINOIS
DEPARTMENT OF TRANSPORTATION

SOIL BORING LOGS VII
STRUCTURE NO. 045-3181
 SHEET NO. 20 OF 20 SHEETS

F.A.P. RTE.	SECTION	COUNTY	TOTAL SHEETS	SHEET NO.
0336	00-00259-00-BT	KANE	79	48
CONTRACT NO. 63667				
FED. ROAD DIST. NO.		ILLINOIS FED. AID PROJECT		