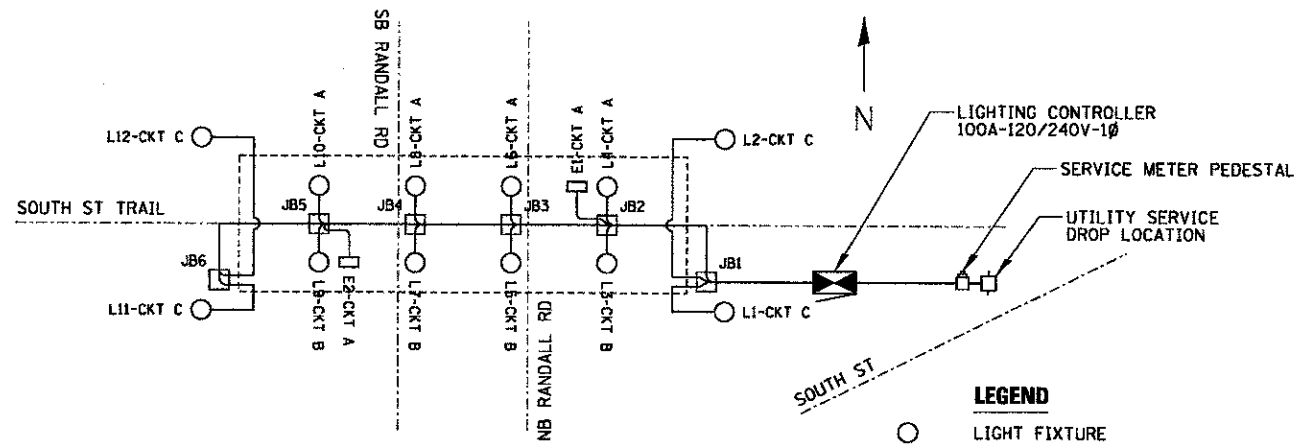


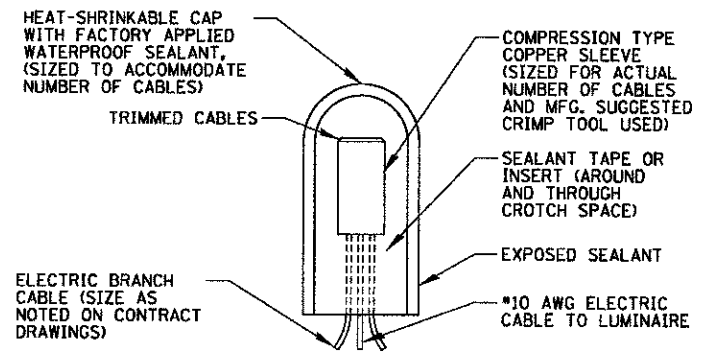
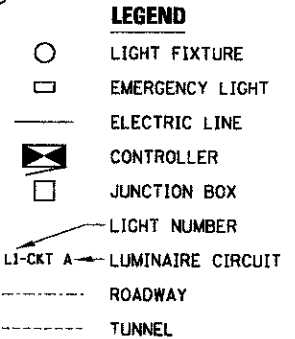
NOTES:

1. ALL WORK SHALL CONFORM TO THE CITY OF GENEVA ELECTRIC DEPARTMENT REQUIREMENTS FOR THE SUPPLY OF ELECTRIC SERVICE.
2. FURNISHING AND INSTALLING ALL MATERIAL SHOWN ABOVE (EXCEPT FOR POLE) SHALL BE INCLUDED IN THE PRICE BID FOR "ELECTRIC SERVICE INSTALLATION". THE HORIZONTAL SERVICE CONDUIT AND WIRING FROM PEDESTAL TO CONTROLLER SHALL BE PAID FOR SEPARATELY.
3. CONTRACTOR SHALL PERFORM ALL COORDINATION REQUIRED WITH CITY OF GENEVA ELECTRIC DEPARTMENT FOR SERVICE APPLICATION AND CONNECTIONS.

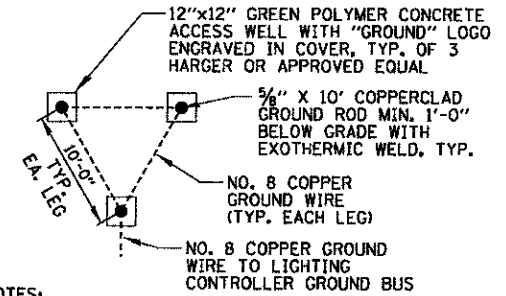
UTILITY OVERHEAD CONNECTION POLE
N.T.S.



ONE LINE CIRCUIT DIAGRAM
N.T.S.



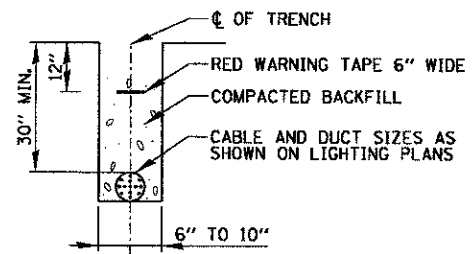
SPLICING ELECTRIC CABLE
N.T.S.



NOTES:

1. ACCESS WELLS, GROUND RODS, AND WIRING SHALL BE INCLUDED IN THE LIGHTING CONTROLLER PAY ITEM.

GROUND FIELD DETAIL (TYP.)
N.T.S.



TRENCH CROSS SECTION

ELECTRIC CONDUIT INSTALLATION
N.T.S.

FILE NAME = M:\Projects\2010\100201\Source\PEI\A\add\Civil\Drawings\LOT_D.B2.dgn

WILLS BURKE KELSEY ASSOCIATES LTD.
110 West Main Street, Suite 201
St. Charles, Illinois 60114
(847) 823-0500

USER NAME = nparriss	DESIGNED -	REVISED -
PLOT SCALE =	DRAWN -	REVISED -
PLOT DATE = 5/18/2012	CHECKED -	REVISED -
	DATE - 5/14/12	REVISED -

**STATE OF ILLINOIS
DEPARTMENT OF TRANSPORTATION**

TUNNEL LIGHTING DETAILS (2 OF 2)		F.A.P. RTE. 0336	SECTION 00-00259-00-BT	COUNTY KANE	TOTAL SHEETS 79	SHEET NO. 52
SCALE:	SHEET NO. 52 OF 79 SHEETS	STA.	TO STA.	CONTRACT NO. 63667		

FED. ROAD DIST. NO.	ILLINOIS FED. AID PROJECT
---------------------	---------------------------