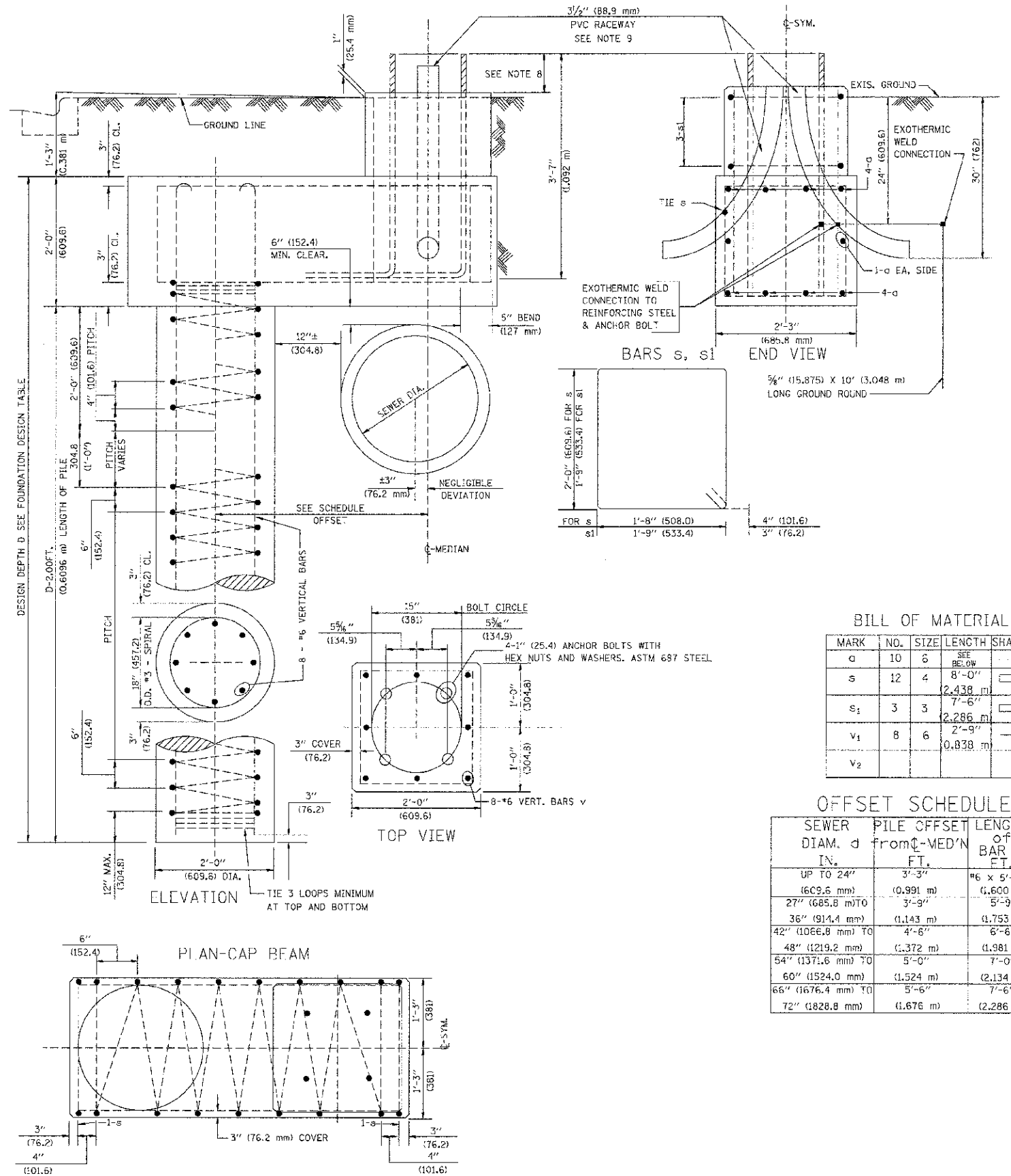


FOUNDATION DESIGN TABLE

TYPE OF SOIL	DESIGN DEPTH OF FOUNDATION		REINFORCEMENT IN FOUNDATION			
	SINGLE ARM D	TWIN ARM D	SINGLE ARM		TWIN ARM	
			VERT BARS	SPIRAL	VERT BARS	SPIRAL
SOFT CLAY	13'-0" (3.962 m)	15'-0" (4.572 m)	8-#6X12'-6" (3.810 m)	*3X122' (37.186 m)	8-#6X14'-3" (4.343 m)	*3X141' (42.977 m)
MEDIUM CLAY	9'-6" (2.896 m)	10'-9" (3.277 m)	8-#6X9'-0" (2.743 m)	*3X90' (27.432 m)	8-#6X10'-0" (3.048 m)	*3X100' (30.480 m)
<b>STIFF CLAY</b>	<b>7'-0" (2.134 m)</b>	<b>8'-0" (2.438 m)</b>	<b>8-#6X6'-6" (1.981 m)</b>	<b>*3X66' (20.112 m)</b>	<b>8-#6X7'-6" (2.286 m)</b>	<b>*3X76' (23.165 m)</b>
LOOSE SAND	9'-0" (2.743 m)	10'-0" (3.048 m)	8-#6X8'-6" (2.591 m)	*3X85' (25.908 m)	8-#6X9'-6" (2.896 m)	*3X94' (28.651 m)
MEDIUM SAND	8'-3" (2.515 m)	9'-0" (2.743 m)	8-#6X8'-0" (2.438 m)	*3X78' (23.774 m)	8-#6X8'-6" (2.591 m)	*3X85' (25.908 m)
DENSE SAND	7'-9" (2.362 m)	9'-0" (2.743 m)	8-#6X7'-6" (2.286 m)	*3X73' (22.250 m)	8-#6X8'-6" (2.591 m)	*3X85' (25.908 m)
ROCK OR SOLIDIFIED SLAG	5'-0" (1.524 m)	5'-0" (1.524 m)	NONE	NONE	NONE	NONE

NOTES

- ALL DIMENSIONS ARE IN INCHES (MILLIMETERS) UNLESS OTHERWISE SHOWN.
- THE ENGINEER SHALL DETERMINE THE CLASS OF SOIL DURING EXCAVATION AND SELECT THE DESIGN DEPTH OF FOUNDATION FROM THE DESIGN TABLE.
- EXCAVATION OF THE POLE FOUNDATION SHALL BE MADE WITH AN AUGER, 24" (609.6 mm) OR 30" (762.0 mm) IN DIAMETER.
- THE ANCHOR ROD SHALL BE A HOOK ROD TYPE. COLD BENDING OF THE ANCHOR ROD WILL NOT BE ALLOWED. THE RADIUS OF THE HOOK BEND SHALL NOT BE LESS THAN 4 TIMES THE NOMINAL DIAMETER OF THE ANCHOR ROD. A TACK WELDED ANCHOR ROD MAY BE SUBSTITUTED WITH THE APPROVAL OF THE ENGINEER.
- THE ANCHOR BOLTS AND RACEWAYS SHALL BE PROPERLY SECURED IN PLACE BEFORE THE CONCRETE IS PLACED IN THE FORM.
- THE ANCHOR RODS SHALL BE ACCORDING TO ASTM F1554 GRADE 725 (GRADE 105). NUTS SHALL BE HEXAGON NUTS ACCORDING TO ASTM A 194 2H OR ASTM A 563 DH, AND WASHERS SHALL BE ACCORDING TO ASTM F 436.
- THE CONTRACTOR SHALL COORDINATE EXTENSION OF ANCHOR BOLTS ABOVE TOP OF FOUNDATION WITH THE BREAKAWAY DEVICE MANUFACTURER'S REQUIREMENTS. IF LIGHT POLE IS MOUNTED WITHOUT BREAKAWAY DEVICE, ANCHOR BOLTS SHALL PROJECT 2 3/4" (69.9 mm) ABOVE TOP OF THE FOUNDATION. THE CONTRACTOR SHALL CONFIRM ANCHOR BOLT EXTENSION WITH ENGINEER.
- RACEWAYS SHALL PROJECT 1" (25.4 mm) ABOVE THE TOP OF THE FOUNDATION.
- THE CABLE TRENCH SHALL BE BACKFILLED AND FIRMLY COMPACTED BEFORE THE LIGHT IS ERRECTED.



BILL OF MATERIAL

MARK	NO.	SIZE	LENGTH	SHAPE
g	10	6	SEE BELOW	
s	12	4	8'-0"	□
s1	3	3	7'-6"	□
v1	8	6	2'-9"	
v2			0.838 m	

OFFSET SCHEDULE

SEWER DIAM. d IN.	PILE OFFSET FROM CL-MED'N FT.	LENGTH of BAR g FT.
UP TO 24"	3'-3"	#6 x 5'-3"
27" (685.8 mm) TO	3'-9"	1.600 m
36" (914.4 mm) TO	1.143 m	1.753 m
42" (1066.8 mm) TO	4'-6"	6'-6"
48" (1219.2 mm) TO	1.372 m	1.981 m
54" (1371.6 mm) TO	5'-0"	7'-0"
60" (1524.0 mm) TO	1.524 m	2.134 m
66" (1676.4 mm) TO	5'-6"	7'-6"
72" (1828.8 mm) TO	1.676 m	2.286 m

FILE NAME = 1043E-DTL-S-01 - 1001 P01 (S)

USER NAME =	DESIGNED -- PAP	REVISED --
PLOT SCALE =	CHECKED --	REVISED --
PLOT DATE = 4-19-12	DRAWN -- MED	REVISED --
	CHECKED -- ACAD	REVISED --

STATE OF ILLINOIS  
DEPARTMENT OF TRANSPORTATION

122ND STREET TO 115TH STREET  
CENTRAL AVENUE STREET LIGHTING  
STREET LIGHTING DETAILS

F.A.U. RTE	SECTION	COUNTY	TOTAL SHEETS	SHEET NO.
2796	10-00091-03-LT	COOK	10	10
CONTRACT NO. 63721				
FED. ROAD DIST. NO. 1 ILLINOIS FED. AID PROJECT M-9003(780)				

SCALE: SHEET NO. 10 OF 10 SHEETS STA. TO STA.