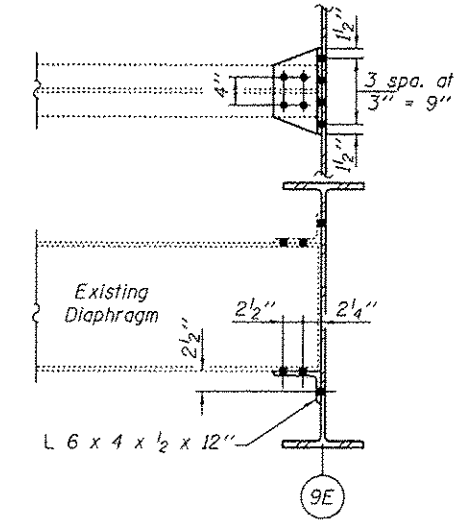
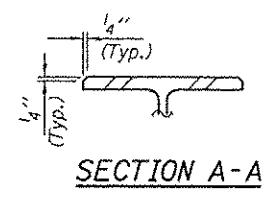


BEAM 9E

W30x132 x 41'-7 13/16" (1 Req'd) N.T.R.
 Web L 3/8" x 18" x 2'-3" (2 Req'd) N.T.R.
 Flange L 15/16" x 10 1/2" x 4'-6 1/4" (2 Req'd) N.T.R.

- * Holes for Diaphragms shall be field drilled.
- ** Diaphragm connecting to Beam 10.
- *** Diaphragm connecting to Beam 8E.



Notes:
 Removal of existing beam to be paid for as "Structural Steel Removal"
 New Beam, Splice L's, & Clip L's to be paid for as "Furnishing & Erecting Structural Steel."

DESIGNED DAB	EXAMINED <i>Timothy A. ...</i>	DATE JUNE 26, 2012	STATE OF ILLINOIS DEPARTMENT OF TRANSPORTATION	BEAM 9E REPLACEMENT DETAILS		F.A.I. RTE. 74	SECTION 190-1410-110(9)1-1	COUNTY TAZEWELL	TOTAL SHEETS 17	SHEET NO. 12
CHECKED GGE	ACTING ENGINEER OF STRUCTURAL SERVICES			SN 090-0091				CONTRACT NO.		
DRAWN Kyle M. Steffen	ACTING ENGINEER OF BRIDGES AND STRUCTURES			SHEET NO. 3 OF 6 SHEETS						
CHECKED DAB GGE				ILLINOIS FED. AID PROJECT						