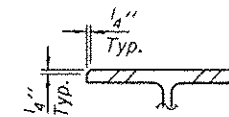


**ELEVATION BEAM 12**  
(Looking West)

Notes:  
 Field drill diaphragm holes in new beams using holes in existing clip L's as a template.  
 Natural camber of new beam shall be placed upward for fabrication.  
 Diaphragm connection holes shall be 1 5/16" for 3/4" bolts. Two hardened washers shall be required at diaphragm connections.  
 Use existing splice PL's as a template to field drill holes in new beam at existing splice locations.  
 The cost of all field drilling required for installation of the steel members is included with Furnishing and Erecting Structural Steel.  
 Removal of existing beam to be paid for as "Structural Steel Removal"  
 New Beam, Splice PL's, & Clip L's to be paid for as "Furnishing & Erecting Structural Steel."



**SECTION A-A**

DESIGNED <i>DAB</i>	EXAMINED <i>Timothy A. Dab...</i>	DATE <i>JUNE 26, 2012</i>	<b>STATE OF ILLINOIS DEPARTMENT OF TRANSPORTATION</b>	<b>BEAM 12 REPLACEMENT DETAILS</b>		F.A.I. RTE.	SECTION	COUNTY	TOTAL SHEETS	SHEET NO.
CHECKED <i>GGE</i>	ACTING ENGINEER OF STRUCTURAL SERVICES			SN 090-0091		74	(90-14HB-1(BR))I-1	TAZENELL	17	13
DRAWN <i>Kyle M. Steffen</i>	PASSED <i>Carl...</i>	REVISED		SHEET NO. 4 OF 6 SHEETS		CONTRACT NO.				
CHECKED <i>DAB GGE</i>	ACTING ENGINEER OF BRIDGES AND STRUCTURES	REVISED		ILLINOIS FED. AID PROJECT						