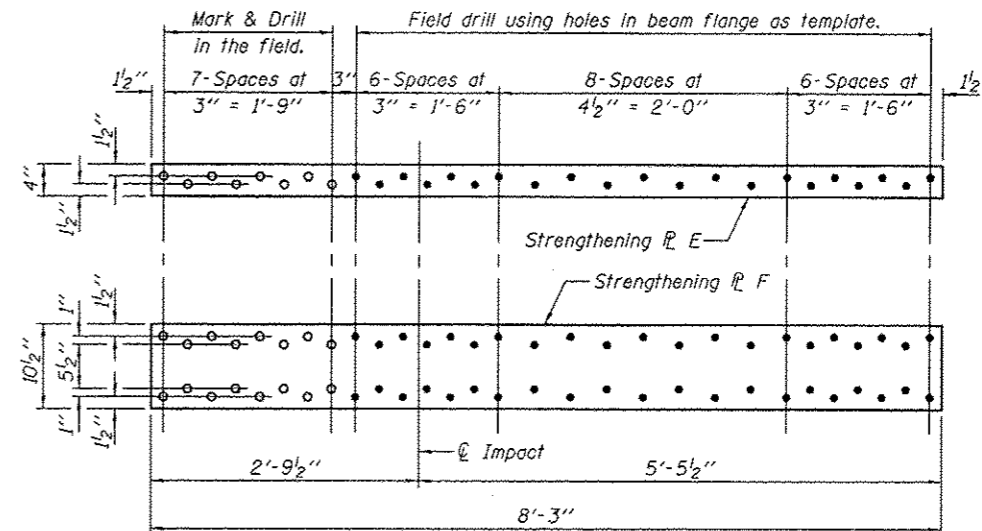
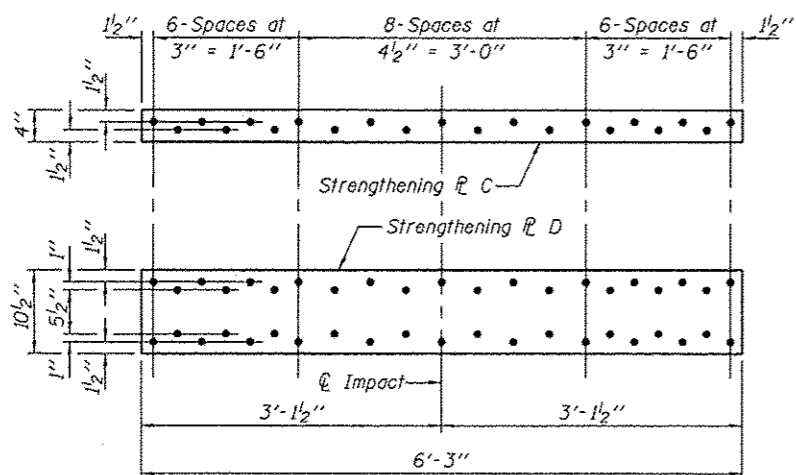


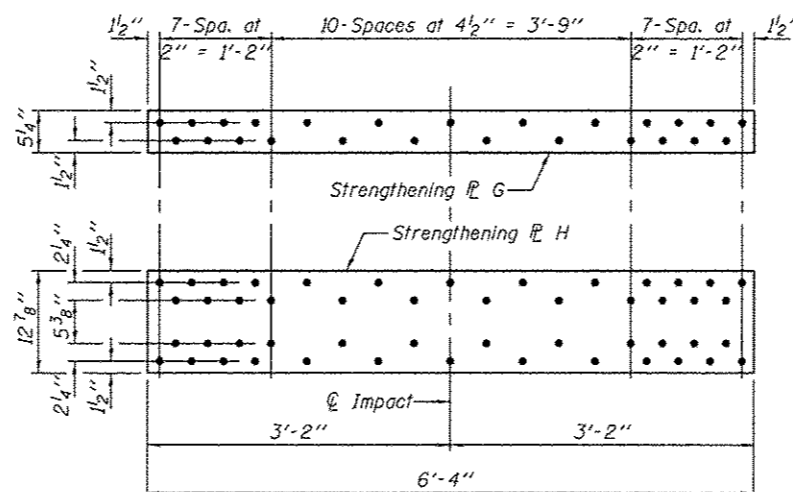
**STRENGTHENING R'S A & B (BEAM 4E)**  
 (Holes to be field drilled using holes in beam flange as template.)  
 R A  $\frac{5}{8}$ " x 4" x 12'-3" (2 Required)  
 R B  $\frac{5}{8}$ " x 10 1/2" x 12'-3" (1 Required)



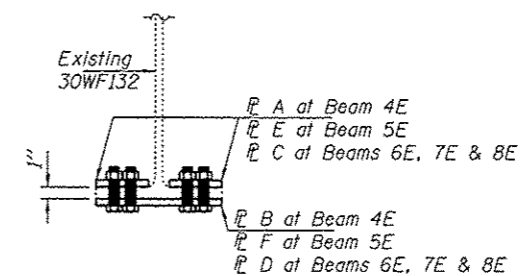
**STRENGTHENING R'S E & F (BEAM 5E)**  
 R E  $\frac{5}{8}$ " x 4" x 8'-3" (2 Required)  
 R F  $\frac{5}{8}$ " x 10 1/2" x 8'-3" (1 Required)



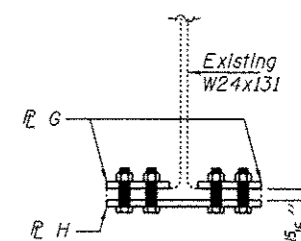
**STRENGTHENING R'S C & D (BEAMS 6E, 7E & 8E)**  
 (Holes in beam flange to be field drilled using strengthening plates as template.)  
 R C  $\frac{5}{8}$ " x 4" x 6'-3" (6 Required)  
 R D  $\frac{5}{8}$ " x 10 1/2" x 6'-3" (3 Required)



**STRENGTHENING R'S G & H (BEAM 10)**  
 (Holes in beam flange to be field drilled using strengthening plates as template.)  
 R G  $\frac{9}{16}$ " x 5 1/4" x 6'-4" (2 Required)  
 R H  $\frac{9}{16}$ " x 12 7/8" x 6'-4" (1 Required)



**STRENGTHENING DETAIL FOR BEAMS 4E THRU 8E**



**STRENGTHENING DETAIL FOR BEAM 10**

Notes:  
 Removal of existing Strengthening R's on Beams 4E & 5E to be paid for as "Structural Steel Removal".  
 New Strengthening R's on Beams 4E thru 8E & 10 and field drilling of holes to be paid for as "Structural Steel Repair".

DESIGNED <i>DAB</i>	EXAMINED <i>Timothy A. D. [Signature]</i>	DATE <i>JUNE 26, 2012</i>	STATE OF ILLINOIS DEPARTMENT OF TRANSPORTATION		SLAB SUPPORT SYSTEM & STRENGTHENING PLATE DETAILS SN 090-0091		F.A.I. RTE. 74	SECTION 190-1408-10R03-1	COUNTY TAZEWELL	TOTAL SHEETS 17	SHEET NO. 14
CHECKED <i>GGE</i>	PASSED <i>[Signature]</i>	REVISIONS					SHEET NO. 5 OF 6 SHEETS		CONTRACT NO. ILLINOIS FED. AID PROJECT		