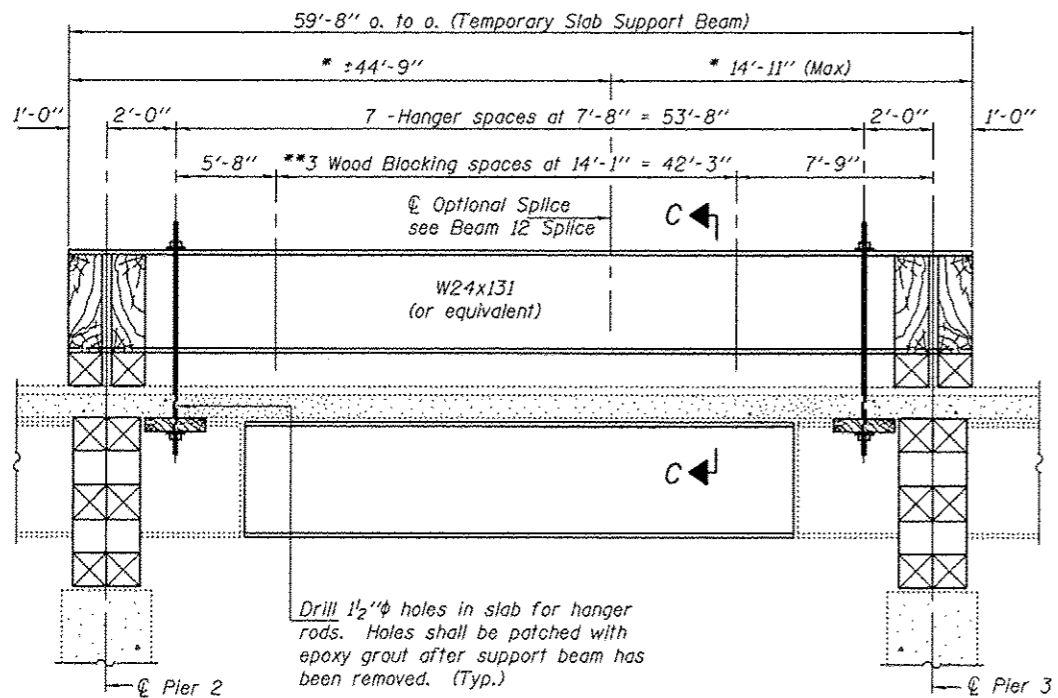
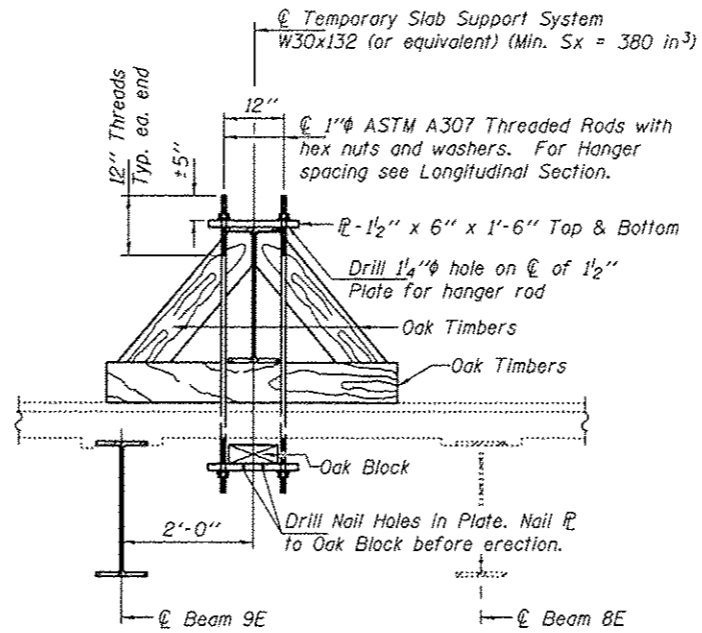


**LONGITUDINAL SECTION AT BEAM 9E  
SUGGESTED TEMPORARY SLAB SUPPORT SYSTEM**

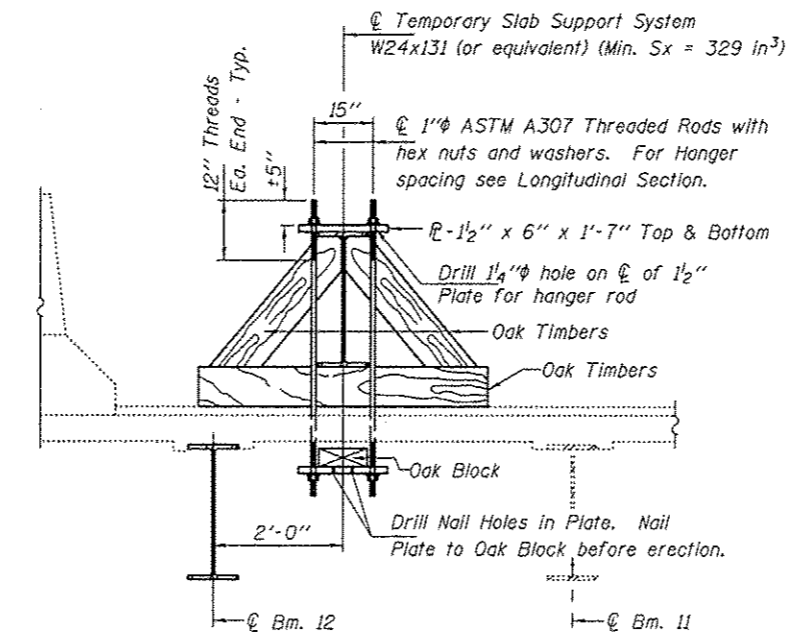
\* These dimensions may vary for available beams in stock.



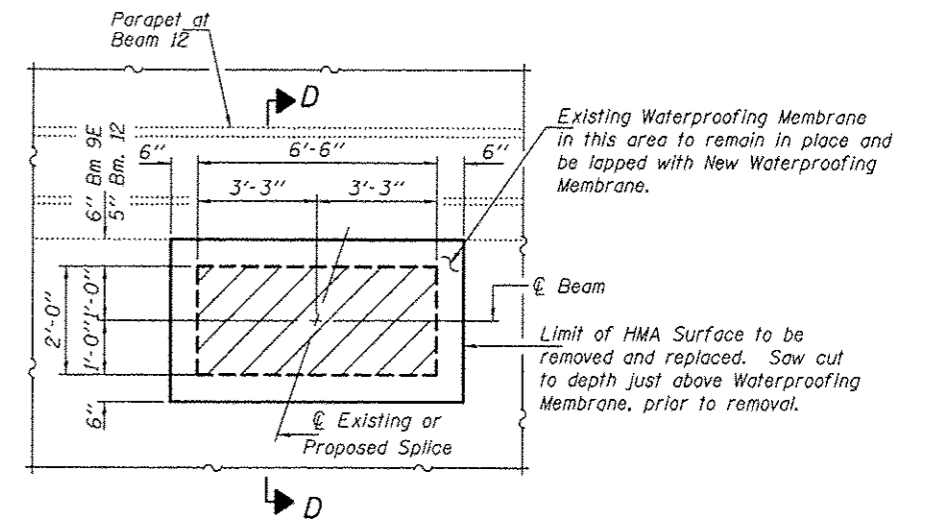
**LONGITUDINAL SECTION AT BEAM 12  
SUGGESTED TEMPORARY SLAB SUPPORT SYSTEM**



**SECTION B-B**

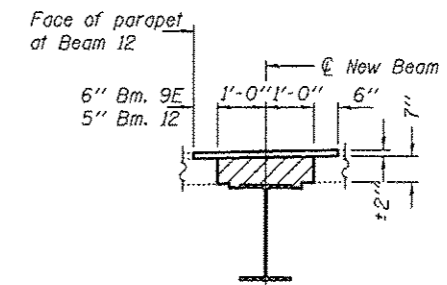


**SECTION C-C**



**TYPICAL CONCRETE & HMA  
SURFACE REMOVAL AND REPLACEMENT**

**Notes**  
 Hatched areas indicate concrete sections to be removed and replaced. Perimeters of concrete removal areas shall be saw cut 3/4" prior to the removal of concrete.  
 Reinforcement shall be cut only if required for fitting bolts. Cut reinforcement shall be spliced as directed by the Engineer. Cost shall be included with Concrete Removal.  
 The cost of removing and replacing the existing HMA wearing surface, waterproofing membrane, and saw cutting shall be included with Concrete Removal.



**SECTION D-D**

DESIGNED	DAB
CHECKED	GGE
DRAWN	Kyle M. Steffen
CHECKED	DAB GGE

EXAMINED	<i>Timothy A. ...</i>
PASSED	<i>...</i>

DATE	JUNE 26, 2012
REVISED	
REVISED	

**STATE OF ILLINOIS  
DEPARTMENT OF TRANSPORTATION**

**TEMPORARY SLAB SUPPORT SYSTEM DETAILS**  
 SN 090-0091  
 SHEET NO. 6 OF 6 SHEETS

F.A.I. RTE.	SECTION	COUNTY	TOTAL SHEETS	SHEET NO.
74	(90-1440-118R)1-1	TAZEWELL	17	15
CONTRACT NO.				
ILLINOIS FED. AID PROJECT				