

STATE OF ILLINOIS  
DEPARTMENT OF TRANSPORTATION  
DIVISION OF HIGHWAYS

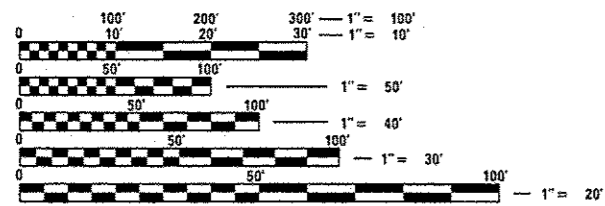
**PROPOSED  
HIGHWAY PLANS**

F.A.I. ROUTE 70 (I70)  
SECTION D7 PATCHING 2013-1

BROWNSTOWN WEIGH STATION  
FAYETTE COUNTY  
C-97-104-12

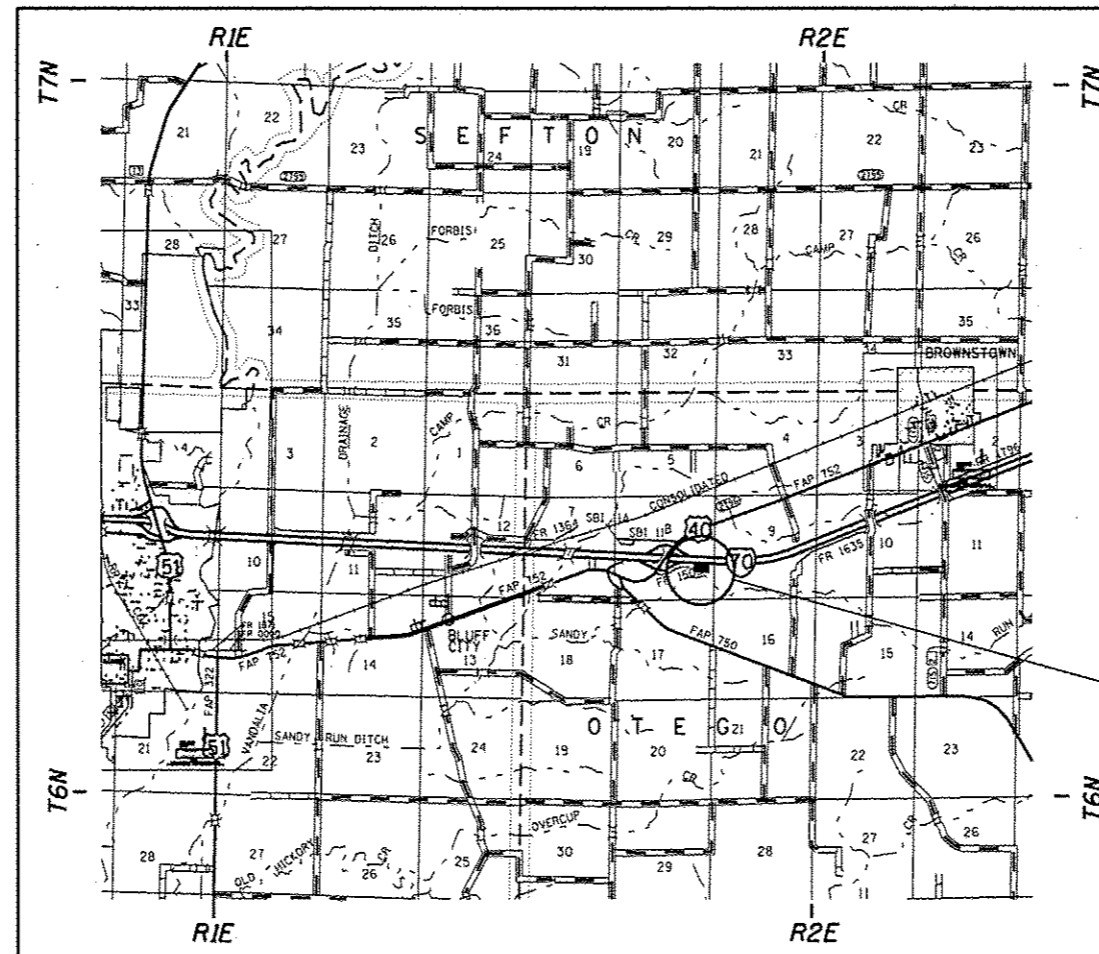
F.A.I. RTE.	SECTION	COUNTY	TOTAL SHEETS	SHEET NO.
70	D7 PATCHING 2013-1	FAYETTE	5	1
		ILLINOIS	CONTRACT NO. 74577	

FOR INDEX OF SHEETS, SEE SHEET NO. 2



FULL SIZE PLANS HAVE BEEN PREPARED USING STANDARD ENGINEERING SCALES. REDUCED SIZED PLANS WILL NOT CONFORM TO STANDARD SCALES. IN MAKING MEASUREMENTS ON REDUCED PLANS, THE ABOVE SCALES MAY BE USED.

J.U.L.I.E.  
JOINT UTILITY LOCATION INFORMATION FOR EXCAVATION  
1-800-892-0123  
OR 811



PROJECT LOCATION

PROJECT ENGINEER: TOM ROMAN  
PROJECT MANAGER: ROSS BIERMAN  
PHONE: 217-342-8320  
CONTRACT NO. 74577

STATE OF ILLINOIS  
DEPARTMENT OF TRANSPORTATION  
DIVISION OF HIGHWAYS

SUBMITTED April 16 20 12  
Ross Bierman  
DEPUTY DIRECTOR OF HIGHWAYS, REGION ENGINEER

June 29 20 12  
John D. Baranzelli, P.E.  
acting ENGINEER OF DESIGN AND ENVIRONMENT

June 29 20 12  
William R. Frey  
acting DIRECTOR OF HIGHWAYS, CHIEF ENGINEER

PRINTED BY THE AUTHORITY  
OF THE STATE OF ILLINOIS

## INDEX OF SHEETS

SHEET NO.	ITEM
1	COVER SHEET
2	INDEX OF SHEETS & GENERAL NOTES
3	SUMMARY OF QUANTITIES
4	TYPICAL SECTIONS
5	PLAN SHEETS

THE FOLLOWING STANDARDS ARE A PART OF THESE PLANS AND ARE INCLUDED AFTER SHEET NO. 5:

STD. NO.	DESCRIPTION
000001-06	STANDARD SYMBOLS, ABBREVIATIONS, AND PATTERNS
001001-02	AREAS OF REINFORCEMENT BARS
442001-04	CLASS A PATCHES
701101-02	OFF-RD OPERATIONS, MULTILANE, 15' TO 24" FROM PAVEMENT EDGE
701451-01	RAMP CLOSURE FREEWAY/EXPRESSWAY
701901-02	TRAFFIC CONTROL DEVICES
780001-03	TYPICAL PAVEMENT MARKINGS

## GENERAL NOTES

THIS SECTION SHALL BE CONSTRUCTED IN ACCORDANCE WITH THE PLANS, THE "STANDARD SPECIFICATIONS FOR ROAD AND BRIDGE CONSTRUCTION", ADOPTED JANUARY 1, 2012; THE "SUPPLEMENTAL SPECIFICATIONS AND RECURRING SPECIAL PROVISIONS" INDICATED ON THE CHECK SHEET, AND THE "SPECIAL PROVISIONS" INCLUDED IN THE PROPOSAL.

THIS PROJECT IS LOCATED AT THE BROWNSTOWN WEIGH STATION ON I-70 IN FAYETTE COUNTY. THE WORK INCLUDED IN SECTION D7 PATCHING 2013-1 CONSISTS OF PAVEMENT PATCHING, PAVEMENT REMOVAL, CONTINUOUSLY REINFORCED PCC PAVEMENT, PAVEMENT MARKING, TRAFFIC CONTROL, AND ANY OTHER WORK NECESSARY TO COMPLETE THIS PROJECT.

THE PAVEMENT REMOVAL WILL BE THE EXISTING 8" PCC PAVEMENT AND EXISTING STABILIZED SUB-BASE 4". THE AREA OF PAVEMENT REMOVAL SHALL BE REPLACED WITH CONTINUOUSLY REINFORCED PORTLAND CEMENT CONCRETE PAVEMENT 12". THE ADDITIONAL EXCAVATION REQUIRED FOR THE 12" PAVEMENT SHALL BE INCLUDED IN THE COST OF THE PAVEMENT REMOVAL AND NO ADDITIONAL COMPENSATION WILL BE ALLOWED.

THE PAVEMENT PATCHES ARE CLASS A AND THE TYPE IS SPECIFIED ON THE PLANS. THE PATCHES ARE AT VARIOUS LOCATIONS ON THE RAMPS AND WILL BE LAID OUT BY THE ENGINEER IN THE FIELD.

THE SAW CUTS REQUIRED FOR THE PAVEMENT REMOVAL SHALL BE INCLUDED IN THE COST OF THE PAVEMENT REMOVAL AND NO ADDITIONAL COMPENSATION WILL BE ALLOWED.

PAVEMENT MARKING SHALL BE APPLIED IN ACCORDANCE WITH SECTION 780 OF THE STANDARD SPECIFICATIONS.

PERMANENT PAVEMENT MARKING ON THIS PROJECT SHALL BE MODIFIED URETHANE PAVEMENT MARKING OF THE SIZE AND TYPE SPECIFIED IN THESE GENERAL NOTES.

THE TOTAL QUANTITY OF MODIFIED URETHANE PAVEMENT MARKING - LINE 4" CONSISTS OF 600 FEET OF WHITE AND 600 FEET OF YELLOW.

FILE NAME =	USER NAME = staffennk	DESIGNED -	REVISED -	<b>STATE OF ILLINOIS DEPARTMENT OF TRANSPORTATION</b>	<b>INDEX OF SHEETS AND GENERAL NOTES</b>	F.A.T. RTE.	SECTION	COUNTY	TOTAL SHEETS	SHEET NO.	
cr:\p\work\p\d01\st\staffennk\d030488910	74577-st-index.dgn	DRAWN -	REVISED -			TO	D7 PATCHING 2013-1	FAYETTE	5	2	
	PLOT SCALE = 100.0000' / in.	CHECKED -	REVISED -			CONTRACT NO. 74577		ILLINOIS FED. AID PROJECT			
	PLOT DATE = 5/3/2012	DATE -	REVISED -			SCALE: N/A	SHEET 1 OF 1 SHEETS	STA.	TO STA.		

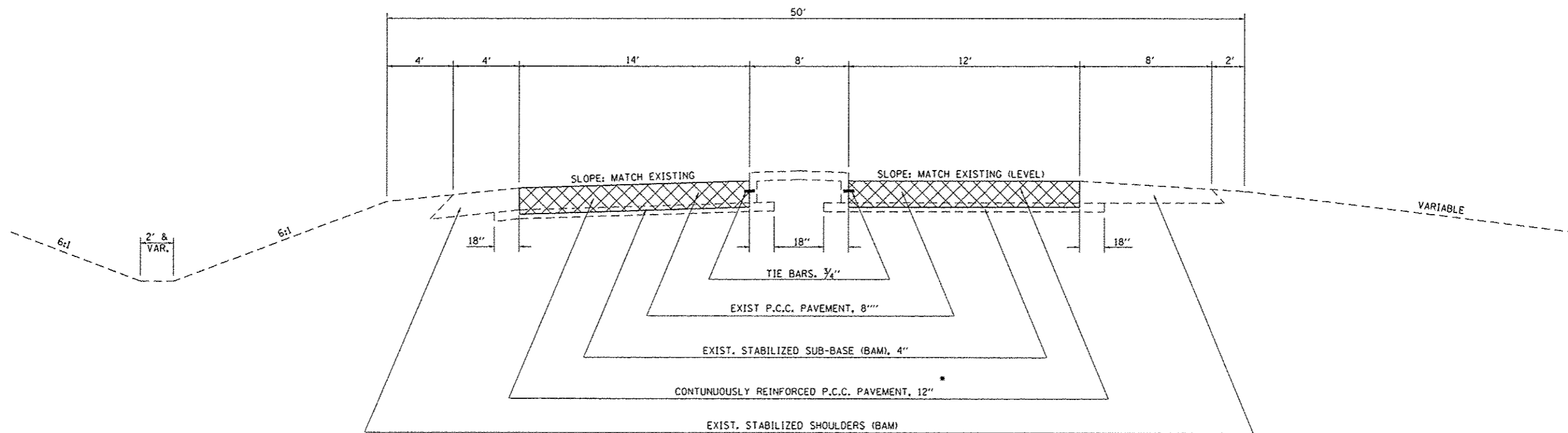
SUMMARY OF QUANTITIES			TOTAL QUANTITIES	CONSTRUCTION TYPE CODE		
CODE NO	ITEM	UNIT		100% STATE		
				0005		
42100340	CONTINUOUSLY REINFORCED PORTLAND CEMENT CONCRETE PAVEMENT 12"	SQ YD	867	867		
42100615	PAVEMENT REINFORCEMENT	SQ YD	867	867		
44000100	PAVEMENT REMOVAL	SQ YD	867	867		
44200525	CLASS A PATCHES, TYPE I, 8 INCH	SQ YD	8	8		
44200529	CLASS A PATCHES, TYPE II, 8 INCH	SQ YD	29	29		
44200533	CLASS A PATCHES, TYPE III, 8 INCH	SQ YD	20	20		
44200535	CLASS A PATCHES, TYPE IV, 8 INCH	SQ YD	186	186		
44213000	PATCHING REINFORCEMENT	SQ YD	243	243		
44213200	SAW CUTS	FOOT	665	665		
44213204	TIE BARS 3/4"	EACH	368	368		
67100100	MOBILIZATION	L SUM	1	1		
70100820	TRAFFIC CONTROL AND PROTECTION, STANDARD 701451	L SUM	1	1		
X 78009004	MODIFIED URETHANE PAVEMENT MARKING - LINE 4"	FOOT	1200	1200		


X SPECIALTY ITEM

FILE NAME =	USER NAME = staffennk	DESIGNED -	REVISED -	STATE OF ILLINOIS DEPARTMENT OF TRANSPORTATION	SUMMARY OF QUANTITIES		F.A.I. RTE.	SECTION	COUNTY	TOTAL SHEETS	SHEET NO.				
c:\pwwork\pilot\staffennk\0304889\0	74577-4h1-soq.dgn	DRAWN -	REVISED -		SCALE: N/A	SHEET 1	OF 1	SHEETS	STA.	TO STA.	70	07 PATCHING 2013-1	FAYETTE	5	3
	PLOT SCALE = 100.0000 / 1 in.	CHECKED -	REVISED -												
	PLOT DATE = 5/3/2012	DATE -	REVISED -												
												CONTRACT NO. 74577		ILLINOIS FED. AID PROJECT	

# TYPICAL CROSS SECTION

STA. 22+60 TO STA. 22+62.87  
 STA. 22+62.87 (BK) = STA. 900+07.73 (AH)  
 STA. 900+07.73 TO STA. 903+04.9



 PAVEMENT & STABILIZED SUB-BASE REMOVAL

**\*NOTE:**  
 THE ADDITIONAL EXCAVATION REQUIRED FOR THE 12" PAVEMENT SHALL BE INCLUDED IN THE COST OF THE PAVEMENT REMOVAL AND NO ADDITIONAL COMPENSATION WILL BE ALLOWED.

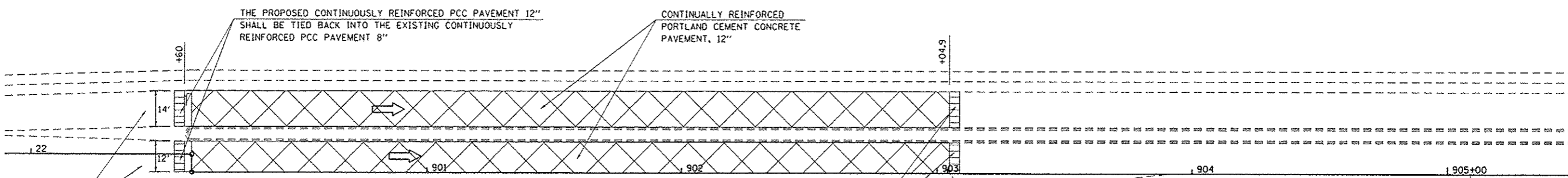
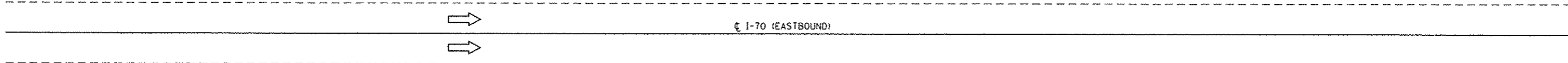
NOTE: NOT DRAWN TO SCALE

FILE NAME =	USER NAME = steffanmk	DESIGNED -	REVISED -	<b>STATE OF ILLINOIS DEPARTMENT OF TRANSPORTATION</b>	<b>TYPICAL CROSS SECTION</b>			F.A.I. RTE.	SECTION	COUNTY	TOTAL SHEETS	SHEET NO.	
c:\pwork\pwork\steffanmk\030406\074577-ah-typical.dgn	74577-ah-typical.dgn	DRAWN -	REVISED -		SCALE: N/A	SHEET 1	OF 1	SHEETS	TO	07 PATCHING 2013-1	FAYETTE	5	4
	PLOT SCALE = 1/8" = 1' / in.	CHECKED -	REVISED -		STA.								
	PLOT DATE = 5/3/2012	DATE -	REVISED -		TO STA.								
												ILLINOIS FED. AID PROJECT	

DATE: 5/3/2012



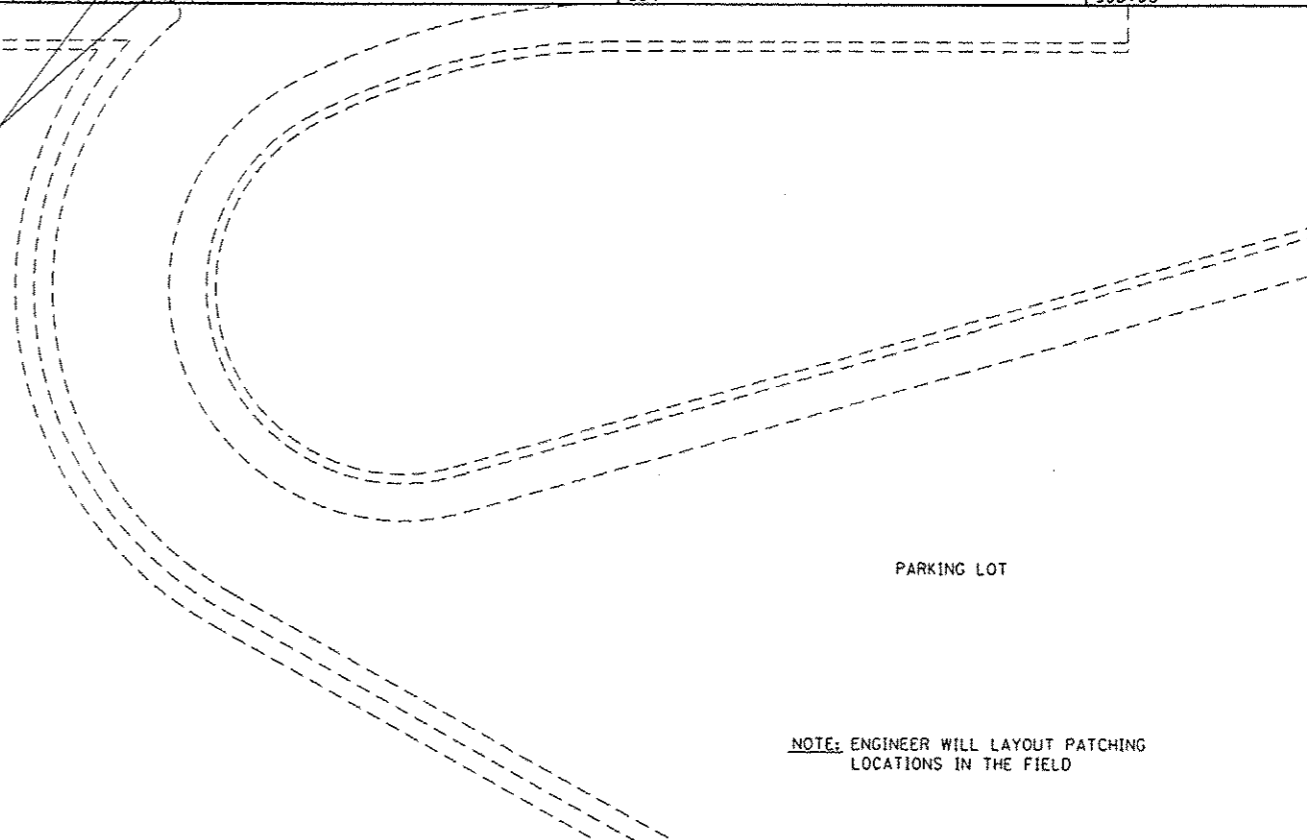
1900+00      1901      1902      1903      1904      1905+00



SCALE LANES

STA. 22A+62.87 (BK) =  
STA. 900A+07.73 (AH)

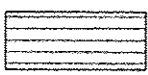
THE PROPOSED CONTINUOUSLY REINFORCED PCC PAVEMENT 12"  
SHALL BE TIED BACK INTO THE EXISTING CONTINUOUSLY  
REINFORCED PCC PAVEMENT 8"



PARKING LOT



PAVEMENT REMOVAL



TRANSITION POINT FOR CONTINUOUSLY  
REINFORCED PCC PAVEMENT

NOTE: ENGINEER WILL LAYOUT PATCHING  
LOCATIONS IN THE FIELD

FILE NAME = c:\p\work\p\dot\staffennk\0304809\074577-shr-plan.dgn	USER NAME = staffennk	DESIGNED -	REVISED -
		DRAWN -	REVISED -
	PLOT SCALE = 40.0000 / in.	CHECKED -	REVISED -
	PLOT DATE = 5/3/2012	DATE -	REVISED -

STATE OF ILLINOIS  
DEPARTMENT OF TRANSPORTATION

PLAN

SCALE: 20      SHEET 1 OF 1 SHEETS      STA.      TO STA.

F.A.I. RTE.	SECTION	COUNTY	TOTAL SHEETS	SHEET NO.
70	07 PATCHING 2013-1	FAYETTE	5	5
CONTRACT NO. 74577			ILLINOIS FED. AID PROJECT	