

STATE OF ILLINOIS
DEPARTMENT OF TRANSPORTATION
DIVISION OF HIGHWAYS

**PROPOSED
HIGHWAY PLANS**

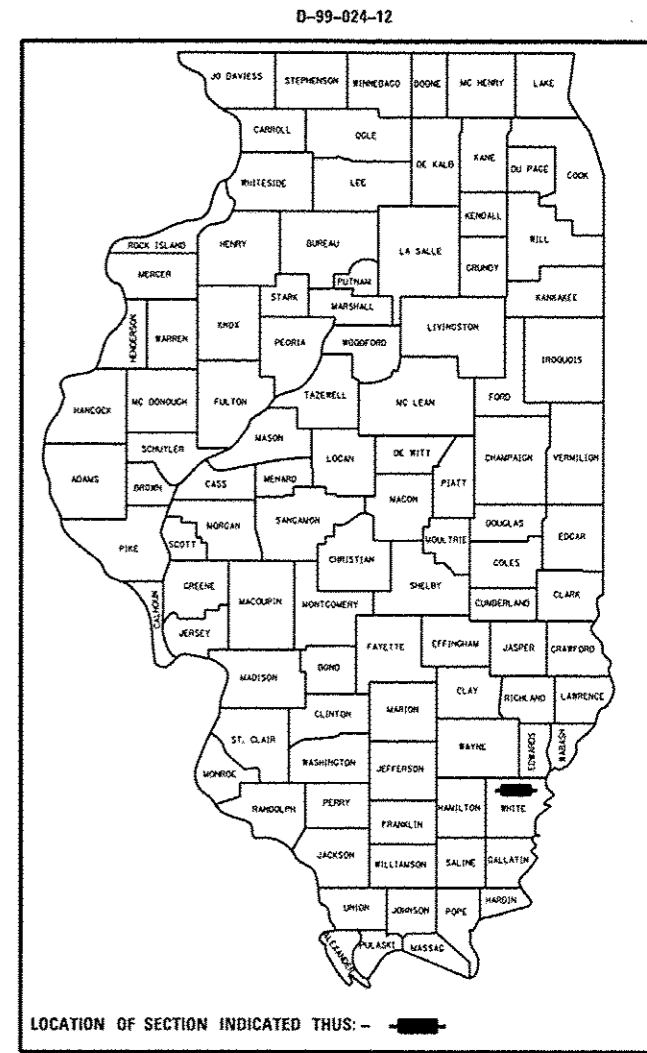
FAP ROUTE 332 (US ROUTE 45)
SECTION D9 CM PAVEMENT REPAIR 2013-1

PAVEMENT REMOVAL AND REPLACEMENT
WHITE COUNTY

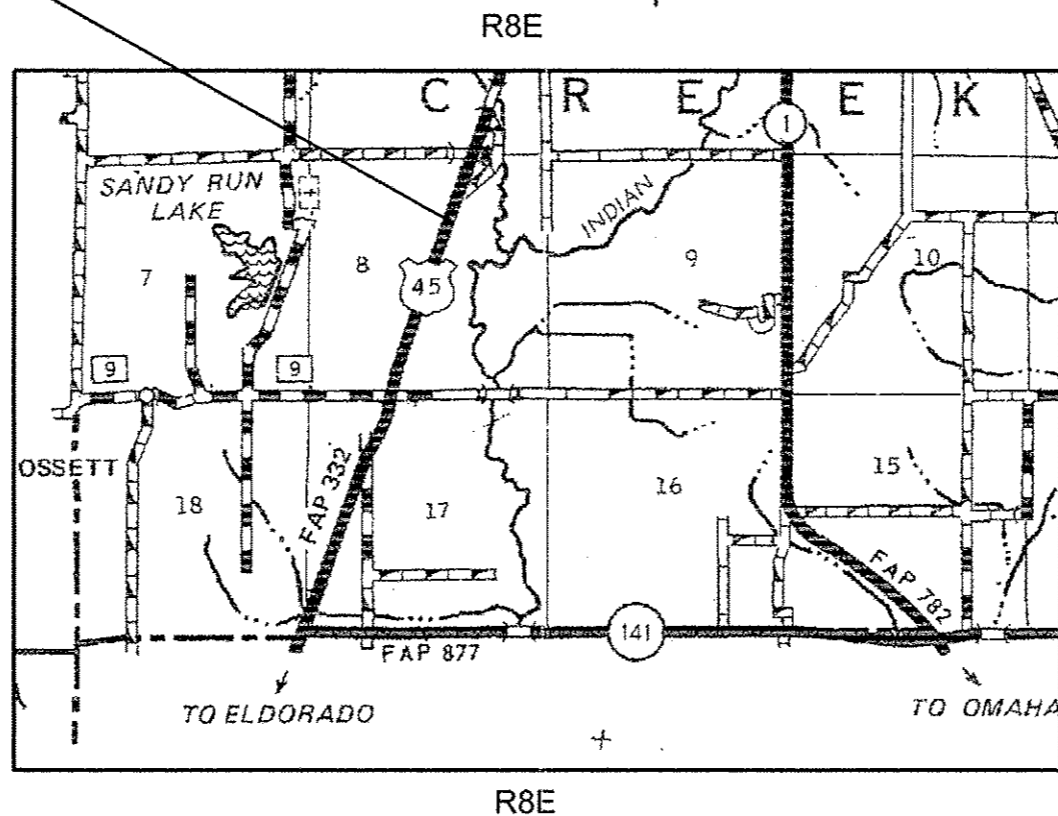
C-99-028-12

F.A.P. RTE.	SECTION	COUNTY	TOTAL SHEETS	SHEET NO.
332 D9 CM SLOPE REPAIR 2013-	WHITE	ILLINOIS	5	1
CONTRACT NO. 78300				

FOR INDEX OF SHEETS, SEE SHEET NO. 2
FOR SUMMARY OF QUANTITIES, SEE SHEET NO. 3



PROJECT LOCATION
1.9 MILES NORTH OF
IL 141



INDIAN CREEK TOWNSHIP

PLANS NOT TO SCALE

FULL SIZE PLANS HAVE BEEN PREPARED USING STANDARD
ENGINEERING SCALES. REDUCED SIZED PLANS WILL NOT
CONFORM TO STANDARD SCALES. IN MAKING MEASUREMENTS
ON REDUCED PLANS, THE ABOVE SCALES MAY BE USED.

J.U.L.I.E.
JOINT UTILITY LOCATION INFORMATION FOR EXCAVATION
1-800-892-0123
OR 811

PROJECT ENGINEER SUSAN POE
PROJECT MANAGER CHRIS RUSSELL

CONTRACT NO. 78300

GROSS LENGTH = 389 FT. = 0.07 MILE
NET LENGTH = 389 FT. = 0.07 MILE

STATE OF ILLINOIS
DEPARTMENT OF TRANSPORTATION
DIVISION OF HIGHWAYS

SUBMITTED May 11 20 12
Ames Osmon
DEPUTY DIRECTOR OF HIGHWAYS, REGION ENGINEER

June 29 20 12
John D. Baranzelli P.E. ILL
Acting ENGINEER OF DESIGN AND ENVIRONMENT

June 29 20 12
William R. Frey ILL
Acting DIRECTOR OF HIGHWAYS, CHIEF ENGINEER

PRINTED BY THE AUTHORITY
OF THE STATE OF ILLINOIS