

08-03-12 LETTING ITEM 035

STATE OF ILLINOIS  
DEPARTMENT OF TRANSPORTATION  
DIVISION OF HIGHWAYS

**PROPOSED  
HIGHWAY PLANS**

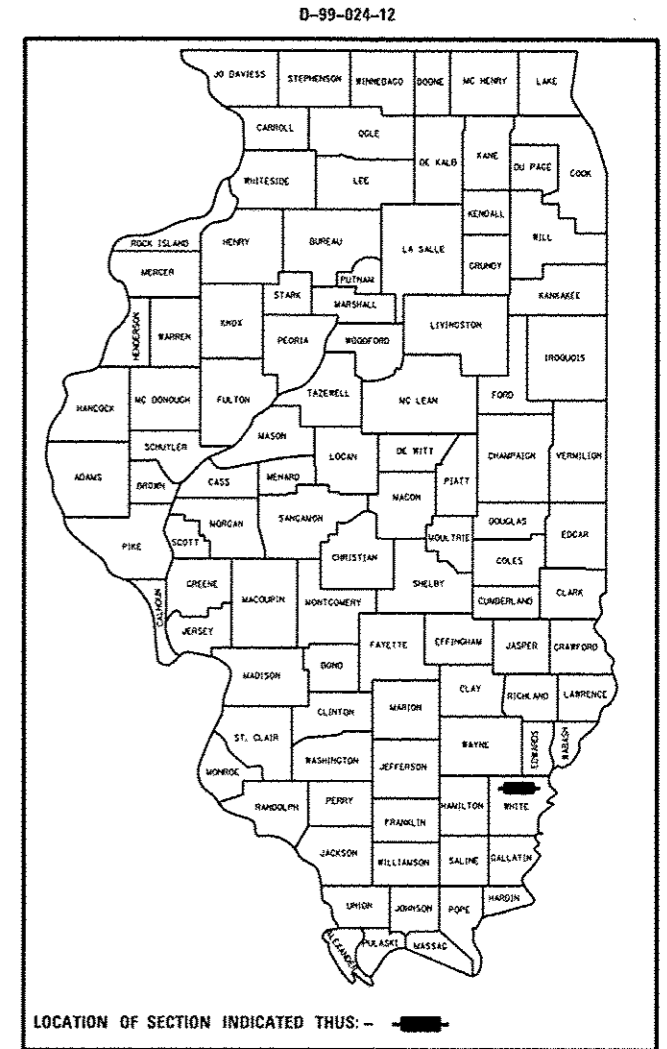
FAP ROUTE 332 (US ROUTE 45)  
SECTION D9 CM PAVEMENT REPAIR 2013-1

PAVEMENT REMOVAL AND REPLACEMENT  
WHITE COUNTY

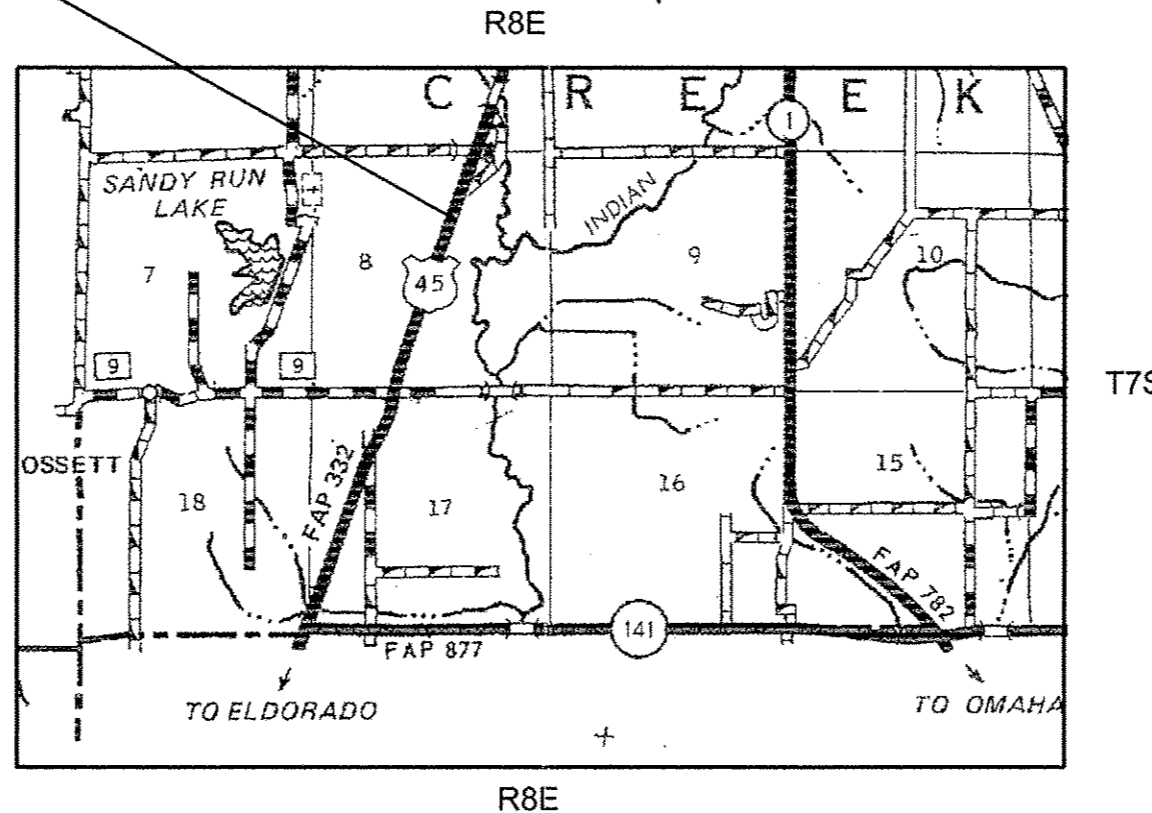
C-99-028-12

F.A.P. RTE.	SECTION	COUNTY	TOTAL SHEETS	SHEET NO.
332	D9 CM SLOPE REPAIR 2013-	WHITE	5	1
		ILLINOIS	CONTRACT NO. 78300	

FOR INDEX OF SHEETS, SEE SHEET NO. 2  
FOR SUMMARY OF QUANTITIES, SEE SHEET NO. 3



PROJECT LOCATION  
1.9 MILES NORTH OF  
IL 141



INDIAN CREEK TOWNSHIP

PLANS NOT TO SCALE

FULL SIZE PLANS HAVE BEEN PREPARED USING STANDARD  
ENGINEERING SCALES. REDUCED SIZED PLANS WILL NOT  
CONFORM TO STANDARD SCALES. IN MAKING MEASUREMENTS  
ON REDUCED PLANS, THE ABOVE SCALES MAY BE USED.

J.U.L.I.E.  
JOINT UTILITY LOCATION INFORMATION FOR EXCAVATION  
1-800-892-0123  
OR 811

PROJECT ENGINEER SUSAN POE  
PROJECT MANAGER CHRIS RUSSELL

CONTRACT NO. 78300

GROSS LENGTH = 389 FT. = 0.07 MILE  
NET LENGTH = 389 FT. = 0.07 MILE

STATE OF ILLINOIS  
DEPARTMENT OF TRANSPORTATION  
DIVISION OF HIGHWAYS

SUBMITTED May 11 20 12  
Ames Osmon  
DEPUTY DIRECTOR OF HIGHWAYS, REGION ENGINEER

June 29 20 12  
John D. Baranzelli P.E. I.C.E.  
Acting ENGINEER OF DESIGN AND ENVIRONMENT

June 29 20 12  
William R. Frey I.C.E.  
Acting DIRECTOR OF HIGHWAYS, CHIEF ENGINEER

**PRINTED BY THE AUTHORITY  
OF THE STATE OF ILLINOIS**

**INDEX OF SHEETS**

SHT NO	DESCRIPTION
1	COVER SHEET
2	INDEX OF SHEETS, STANDARDS, GENERAL NOTES
3	SUMMARY OF QUANTITIES
4	PLAN SHEET, TYPICAL
5	DETOUR SHEET

**GENERAL NOTES**

- FACTORS USED FOR ESTIMATING PLAN QUANTITIES ARE AS FOLLOWS AND SHALL NOT BE USED FOR THE BASIS OF FINAL QUANTITIES:  
 ALL HOT MIX ASPHALT 2.016 TONS/CU YD  
 ALL AGGREGATE 2.05 TONS/CU YD  
 BITUMINOUS MATERIALS:  
 ON PAVEMENT 0.09 GAL/SQ YD  
 INTERMEDIATE LIFTS (FOG COATS) 0.04 GAL/SQ YD  
 ON AGGREGATE SURFACE 0.32 GAL/SQ YD  
 AGGREGATE (PRIME COAT) 0.0015 TONS/SQ YD  
 RIPRAP 1.50 TONS/CU YD
- PROTECTIVE COAT SHALL BE APPLIED TO PCC PAVEMENT AS NEEDED ACCORDING TO THE SEASONAL REQUIREMENTS FOR ARTICLE 420.18 OF THE STANDARD SPECIFICATIONS.
- NEW PAVEMENT CONSTRUCTED ADJACENT TO EXISTING PAVEMENT SHALL BE TIED TO EXISTING UTILIZING TIE BARS OF THE SAME SIZE AND SPACING SHOWN AT THE CENTERLINE ON STANDARD 420101. THE TIE BARS SHALL BE INCLUDED IN THE COST OF THE PROPOSED PAVEMENT.
- THE PROPOSED PAVEMENT SHALL BE CONSTRUCTED PER HIGHWAY STANDARD 420101 EXCEPT STABILIZED SUB BASE WILL NOT BE REQUIRED.

**STANDARDS**

000001-06	STANDARD SYMBOLS, ABBREVIATIONS, AND PATTERNS
001001-02	AREAS OF REINFORCEMENT BARS
001006	DECIMAL OF AN INCH AND OF A FOOT
420001-07	PAVEMENT JOINTS
420101-04	24' JOINTED PCC PAVEMENT
701901-02	TRAFFIC CONTROL DEVICES
780001-03	TYPICAL PAVEMENT MARKINGS
B.L.R. 21-9	TYPICAL APPLICATION OF TRAFFIC CONTROL DEVICES FOR CONSTRUCTION ON RURAL LOCAL HIGHWAYS

**COMMITMENTS**

THE FOLLOWING ADMINISTRATORS SHOULD BE NOTIFIED WHEN THE EXACT DATES OF CLOSURE ON US 45 ARE KNOWN :

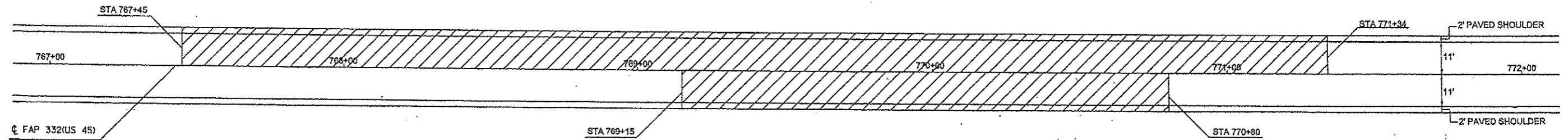
CLIFF KARNES - NCOE SCHOOL DISTRICT SUPERINTENDENT (618) 599-0058  
 MATT VOLLMAN - NCOE HIGH SCHOOL PRINCIPAL (618) 499-3909  
 WAYNE MCKINSEY - WHITE COUNTY EMERGENCY DISPATCHER (618) 382-4633  
 BRIAN RAY - WHITE COUNTY ENGINEER (618) 382-4811



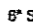
Prepared By:	<i>Joe G. [Signature]</i> DISTRICT STUDIES & PLANS ENGINEER
Examined By:	<i>Justin E. [Signature]</i> DISTRICT LAND ACQUISITION ENGINEER
Examined By:	<i>Chris Nelson [Signature]</i> DISTRICT PROGRAM DEVELOPMENT ENGINEER
Examined By:	<i>Will Kelly [Signature]</i> DISTRICT OPERATIONS ENGINEER
Examined By:	<i>[Signature]</i> DISTRICT PROJECT IMPLEMENTATION ENGINEER
Examined By:	<i>Douglas Halfon [Signature]</i> DISTRICT CONSTRUCTION ENGINEER
Examined By:	<i>Bruce [Signature]</i> DISTRICT MATERIALS ENGINEER
Approved By:	<i>Omara [Signature]</i> DEPUTY DIRECTOR OF HIGHWAYS, REGION 5 ENGINEER
DATE	May 11 2012

FILE NAME *	USER NAME *	DESIGNED -	REVISED -	STATE OF ILLINOIS DEPARTMENT OF TRANSPORTATION		INDEX OF SHEETS STANDARDS, GENERAL NOTES		F.A.P. RTE.	SECTION	COUNTY	TOTAL SHEETS	SHEET NO.	
o:\pwork\pwork\russell\03082059\78300-shs-plandgn	russell	DRAWN -	REVISED -	SCALE:	SHEET	OF	SHEETS	STA.	TO STA.	332 09 CM SLOPE REPAIR 2013-	WHITE	5	2
		CHECKED -	REVISED -							CONTRACT NO. 78300			
		DATE -	REVISED -							ILLINOIS FED. AID PROJECT			

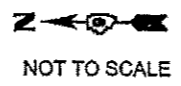
CODE NUMBER	PAY ITEM	CONSTRUCTION TYPE CODE		0004
		UNIT	TOTAL QUANTITY	ROADWAY 100% STATE
31100500	SUB-BASE GRANULAR MATERIAL, TYPE A-6"	SO YD	870	870
42000501	PORTLAND CEMENT CONCRETE 10" (JOINTED)	SO YD	805	805
42001300	PROTECTIVE COAT	SOYD	805	805
44000100	PAVEMENT REMOVAL	SO YD	805	805
48102100	AGGREGATE WEDGE SHOULDER, TYPE B	TON	11	11
67100100	MOBILIZATION	L SUM	1	1
70101830	TRAFFIC CONTROL AND PROTECTION, STANDARD BLR 21	L SUM	1	1
70106800	CHANGEABLE MESSAGE SIGN	CAL MO	3	3
X 72000100	SIGN PANEL, TYPE 1	SQ FT	74.5	74.5
X 72000200	SIGN PANEL, TYPE 2	SQ FT	112	112
X 78001110	PAINT PAVEMENT MARKINGS - LINE 4"	FOOT	652	652

X SPECIALTY  
ITEM

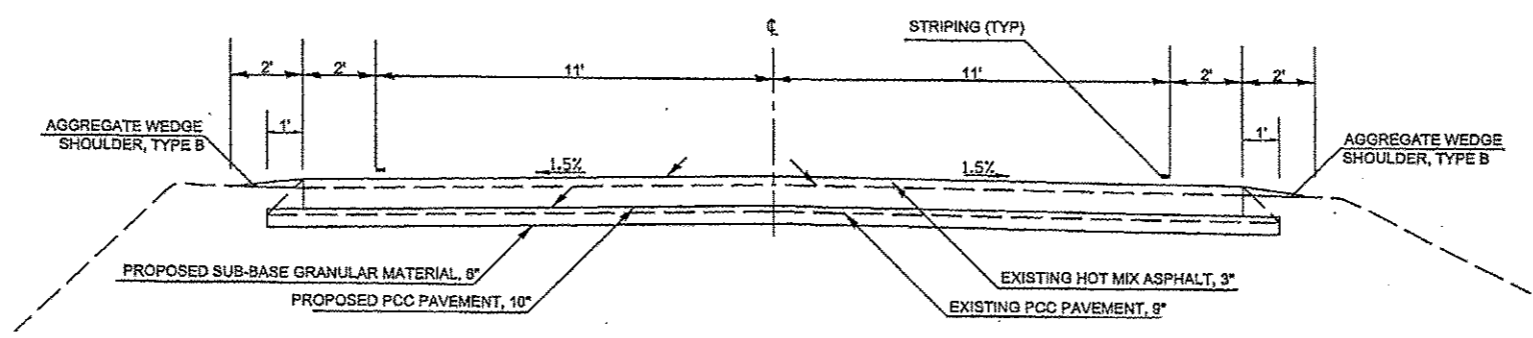


 PAVEMENT REMOVAL  
 10" PCC PAVEMENT  
 6" SUB BASE GRANULAR MATERIAL

**PLAN DETAIL**



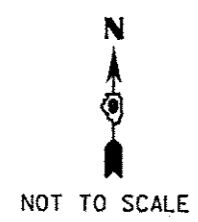
US 45 SHALL BE CLOSED ACCORDING STANDARD BLR-21  
AND AS DIRECTED BY THE ENGINEER



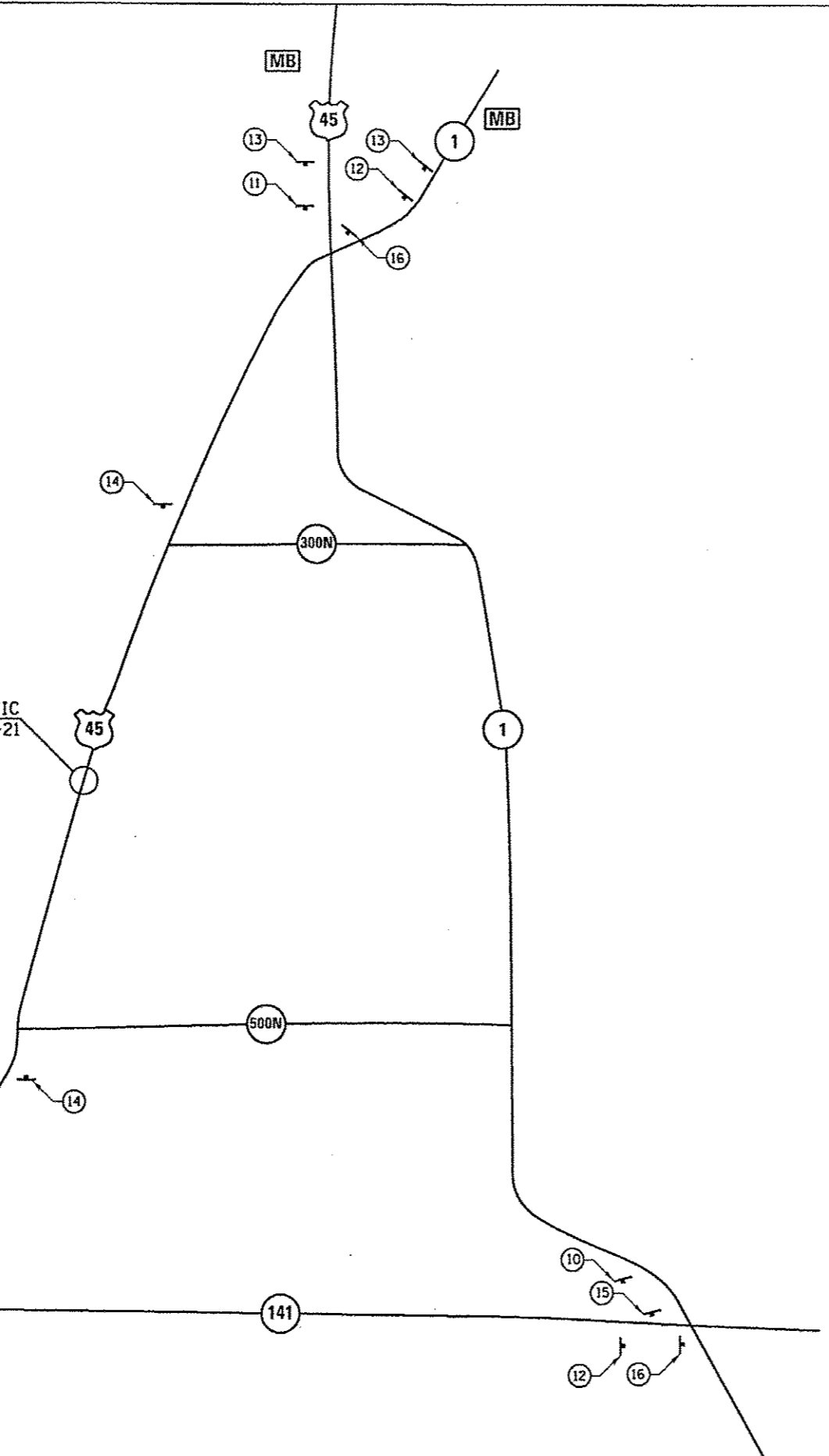
TO BE USED  
 NORTHBOUND  
 STA 767+45 TO STA 771+34  
 SOUTHBOUND  
 STA 769+15 TO STA 770+80

FILE NAME =	USER NAME = russellf	DESIGNED -	REVISED -	<b>STATE OF ILLINOIS DEPARTMENT OF TRANSPORTATION</b>	<b>PLAN SHEET TYPICAL</b>	F.A.P. RTE.	SECTION	COUNTY	TOTAL SHEETS	SHEET NO.	
ci:\pwork\pedit\russellf\d938283\170	00-sh1-plan.dgn	DRAWN -	REVISED -			332 09 CM SLOPE REPAIR 2013-	WHITE	5	4		
	PLOT SCALE = 100.0000 1/1 in.	CHECKED -	REVISED -			<b>CONTRACT NO. 78300</b>					
	PLOT DATE = 5/18/2012	DATE -	REVISED -			[ILLINOIS] FED. AID PROJECT					
				SCALE:	SHEET	OF	SHEETS	STA.	TO	STA.	

888 8 0 7 AM



US 45 CLOSED TO TRAFFIC  
ACCORDING STANDARD BLR-21



DETOUR ROUTE SIGN SCHEDULE					
SIGN ID NO.	DESCRIPTION	NUMBER REQUIRED EACH	SIGN SIZE	SIGN PANEL TYPE 1 SQ FT	SIGN PANEL TYPE 2 SQ FT
M4-9R	DETOUR	9	24" x 12"	18	
M1-I100	45	9	24" x 24"	36	
M5-1R		2	21" x 15"	4.5	
M5-1L		2	21" x 15"	4.5	
M6-3		1	21" x 15"	2.5	
M6-1		4	21" x 15"	9	
W20-2	DETOUR AHEAD	3	48" x 48"		48
W20-3	ROAD CLOSED AHEAD	2	48" x 48"		64
<b>TOTALS</b>				<b>74.5</b>	<b>112</b>

**LEGEND**

SIGN

MESSAGE BOARD

**SIGNING**

FILE NAME *	USER NAME * russellof	DESIGNED -	REVISED -
c:\pwork\pudot\russellof\19392259\78300-sht-plan.dgn		DRAWN -	REVISED -
PLOT SCALE * 100.0000' / in.		CHECKED -	REVISED -
PLOT DATE * 5/16/2012		DATE -	REVISED -

**STATE OF ILLINOIS  
DEPARTMENT OF TRANSPORTATION**

**DETOUR SHEET**

SCALE: SHEET OF SHEETS STA. TO STA.

F.A.P. RTE.	SECTION	COUNTY	TOTAL SHEETS	SHEET NO.
332 09 CM SLOPE REPAIR 2013-		WHITE	5	5
CONTRACT NO. 78300				
ILLINOIS FED. AID PROJECT				