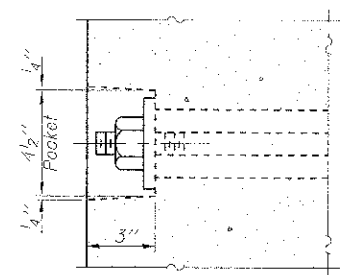


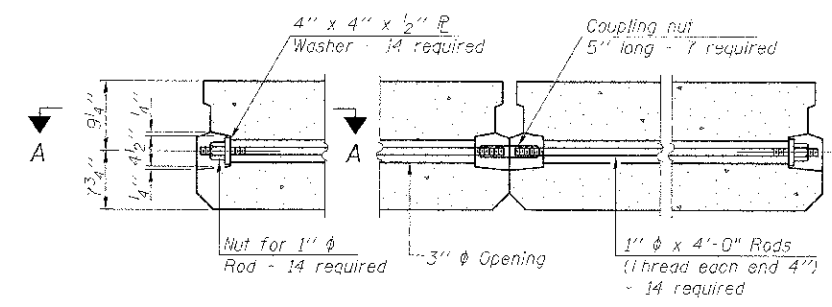
**FABRIC BEARING PAD**  
(Interior)

**FABRIC BEARING PAD**  
(Exterior)

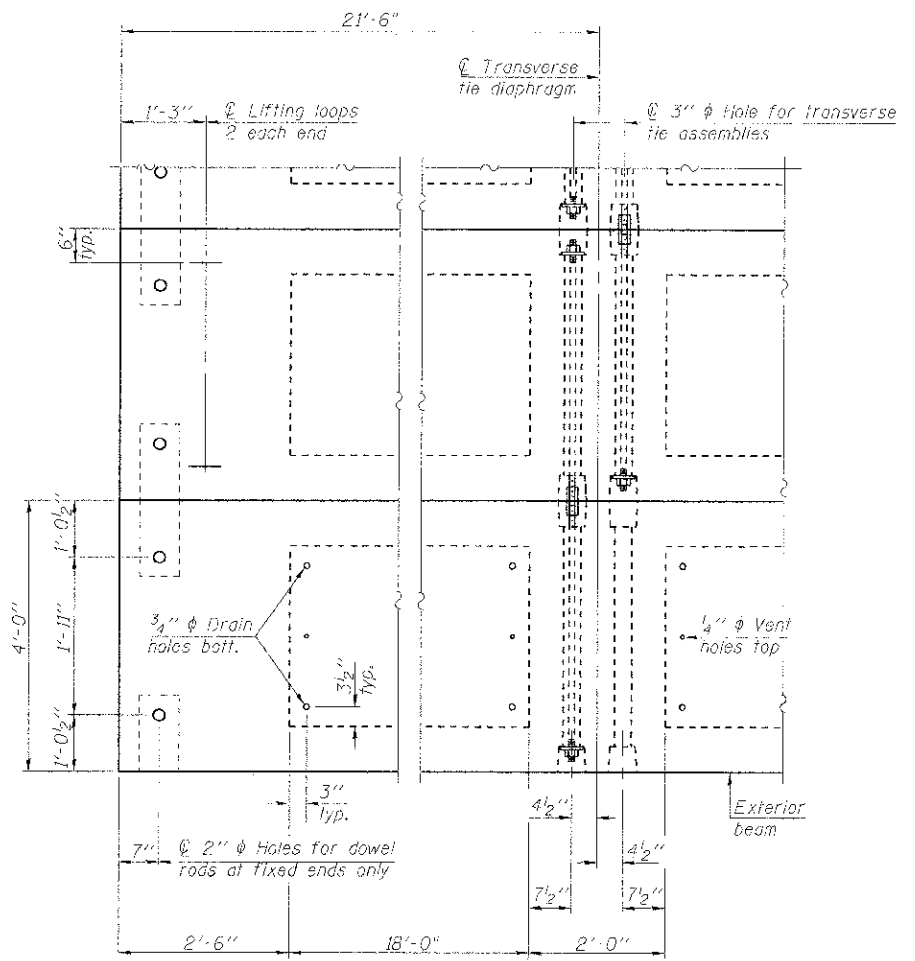
**Notes:**  
 All bearing pads shall be 1" thick.  
 Omit holes when using expansion bearings.  
 Expansion bearing pad shall be bonded to the substructure.



**SECTION A-A**

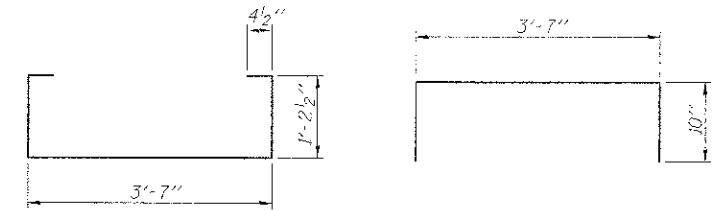


**TYPICAL TRANSVERSE TIE ASSEMBLY**



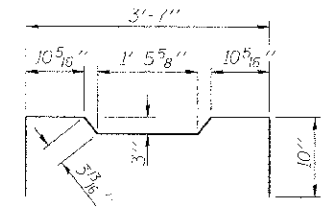
**PLAN VIEW**

Note: Connect beams in pairs with the transverse tie configuration shown.



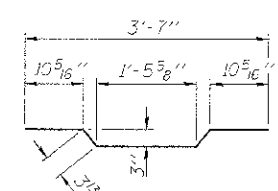
**BAR S1(E)**

**BAR S1(E)**



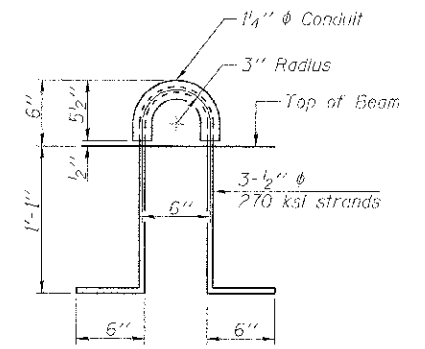
**BAR S2(E)**

**BAR U1(E)**



**BAR A1(E)**

**BAR U2(E)**



**LIFTING LOOP DETAIL**

**BILL OF MATERIAL**

Precast Prestressed Conc. Deck Bms. (17" depth)	Sq. Ft.	1,375
---	---------	-------

**NOTES**

Prestressing steel shall be uncoated high strength, low relaxation 7-wire strand, Grade 270. The nominal diameter shall be 1/2" and the nominal cross-sectional area shall be 0.153 sq. in. The 1" rods in the transverse tie assembly shall be tightened to a snug fit and the threads set. Pockets on exterior faces of bridge shall be filled with grout after transverse tie assembly is in place.  
 Reinforcement bars shall conform to ASTM A 706, Grade 60. (See Special Provisions).  
 Two 1/2" fabric adjusting shims of the dimensions of the exterior bearing pad shall be provided for each bearing pad location.  
 A minimum 2 1/2" diameter lifting pin shall be used to engage the lifting loops during handling.  
 Corrosion Inhibitor, per Article 1020.05(b)(12) and 1021.06 of the Standard Specifications, shall be used in the concrete for precast prestressed concrete deck beams.  
 Compressive strength of prestressed concrete, f'c, shall be 6000 psi.  
 Compressive strength of prestressed concrete at release, f'ci, shall be 5000 psi.

ENGINEER: 2012 BY BAXTER & WOODMAN, INC.  
 STATE OF MISSISSIPPI PROFESSIONAL ENGINEERING FIRM  
 LICENSE NO. BE-0007 ENGINEER: 4/20/2015  
 PROJECT: PD-1748-OD  
 SHEET: 4 OF 7

PD-1748-OD 7-1-10

FILE NAME	USER NAME	DESIGNED AS	REVISED
		CHECKED BAB	REVISED
		DRAWN BCD	REVISED
		CHECKED BLB	REVISED

**VILLAGE OF KIRKLAND  
 HORTENSE ST BRIDGE OVER  
 BULL RUN CREEK**

**17" x 48" PPC DECK BEAM DETAILS  
 STRUCTURE NO. 019-4002**

SHEET NO. 4 OF 7 SHEETS

MUN. ST.	SECTION	COUNTY	TOTAL SHEETS	SHEET NO.
1090	10-00008-00-BR	DEKALB	20	13
CONTRACT NO. 87532			FED. ROAD DIST. NO. 3 ILLINOIS	