

GENERAL NOTES

1. ALL CONSTRUCTION SHALL BE DONE IN ACCORDANCE WITH THE DETAILS IN THE PLANS, THE SPECIAL PROVISIONS INCLUDED IN THE CONTRACT DOCUMENTS, AND THE LATEST EDITION OF THE FOLLOWING STATE OF ILLINOIS SPECIFICATIONS: "THE STANDARD SPECIFICATIONS FOR ROAD AND BRIDGE CONSTRUCTION" (REFERRED TO AS THE "STANDARD SPECIFICATIONS"), THE "SUPPLEMENTAL SPECIFICATIONS AND RECURRING SPECIAL PROVISIONS", THE "STANDARD SPECIFICATIONS FOR TRAFFIC CONTROL ITEMS", THE "MANUAL ON UNIFORM TRAFFIC CONTROL DEVICES FOR STREETS AND HIGHWAYS", THE "MANUAL OF TEST PROCEDURES FOR MATERIALS" AND THE "STANDARD SPECIFICATIONS FOR WATER AND SEWER MAIN CONSTRUCTION IN ILLINOIS".
2. THE LOCATIONS OF PUBLIC OR PRIVATE UTILITIES SHOWN ON THE PLANS ARE APPROXIMATE AND THE VILLAGE DOES NOT GUARANTEE THEIR ACCURACY. THE CONTRACTOR SHALL HAVE THE RESPECTIVE UTILITY COMPANIES FIELD LOCATE ALL THEIR FACILITIES PRIOR TO BEGINNING CONSTRUCTION. THE CONTRACTOR SHALL ALSO VERIFY THE DEPTHS OF THE EXISTING UTILITIES IF NECESSARY. THE CONTRACTOR SHALL BE RESPONSIBLE FOR THE MAINTENANCE AND PRESERVATION OF THESE FACILITIES. ANY RELOCATION OR LOWERING OF UTILITIES SHALL BE COORDINATED BY THE CONTRACTOR.
3. THE CONTRACTOR SHALL BE RESPONSIBLE FOR THE PROTECTION OF ALL UNDERGROUND OR SURFACE UTILITIES EVEN THOUGH THEY MAY NOT BE SHOWN ON THE PLANS. ANY UTILITY THAT IS DAMAGED DURING CONSTRUCTION SHALL BE REPAIRED OR REPLACED AT THE CONTRACTOR'S EXPENSE TO THE SATISFACTION OF THE ENGINEER.
4. THE CONTRACTOR SHALL NOTIFY THE VILLAGE AT LEAST 48 HOURS IN ADVANCE OF BEGINNING WORK TO OBTAIN VILLAGE UTILITY LOCATIONS AND SHALL COORDINATE ALL CONSTRUCTION OPERATIONS WITH THE ENGINEER.
5. MATERIALS RESULTING FROM THE REMOVAL OF PAVEMENT, DRIVEWAYS, CURB AND GUTTER, HOT-MIX ASPHALT SURFACES, ETC. SHALL BE REMOVED AT THE END OF EACH DAY TO AN APPROVED SITE. IN THE JUDGMENT OF THE VILLAGE, SHOULD IT BE NECESSARY TO REMOVE SUCH MATERIALS, THE VILLAGE WILL HAVE THE MATERIAL REMOVED AND THE CONTRACTOR WILL BE BILLED (CHARGED) ACCORDINGLY.
6. IT WILL BE THE CONTRACTOR'S RESPONSIBILITY TO NOTIFY RESIDENTS AND THE VILLAGE WHEN ACCESS TO THEIR DRIVEWAYS WILL BE TEMPORARILY CLOSED DUE TO RESURFACING, CURB AND GUTTER, AND/OR DRIVEWAY REPLACEMENT. THE CONTRACTOR SHALL DISTRIBUTE NOTICES PROVIDED BY THE COUNTY TO RESIDENTS.
7. THE CONTRACTOR SHALL PROTECT AND CAREFULLY PRESERVE ALL SECTION OR SUBSECTION MONUMENTS OR PROPERTY OR REFERENCE MARKERS UNTIL THE OWNERS, HIS AGENT OR AN AUTHORIZED SURVEYOR HAS WITNESSED OR OTHERWISE REFERENCED THEIR LOCATIONS.
8. ACCESS TO COMMERCIAL AND PRIVATE DRIVEWAYS SHALL BE PROVIDED AT ALL TIMES.
9. ALL SAW CUTTING SHALL BE INCLUDED IN THE COST OF THE ITEM BEING REMOVED.
10. ANY DAMAGE TO PAVEMENT, SIDEWALK, CURB OR ANY OTHER PORTION OF THE ROADWAY NOT SPECIFICALLY TO BE REMOVED AND REPLACED SHALL BE REPAIRED OR REPLACED BY THE CONTRACTOR AT NO ADDITIONAL CHARGE.
11. THE CONTRACTOR SHALL PROVIDE AND INSTALL TWO (2) WEIGHTED SANDBAGS ON EACH TYPE I OR TYPE II BARRICADE USED. ONE (1) WEIGHTED SANDBAG SHALL BE PLACED ACROSS EACH BOTTOM RAIL.
12. EXISTING NAME PLATE SHALL BE CLEANED AND RELOCATED NEXT TO NEW NAME PLATE. COST INCLUDED WITH NAME PLATES.
13. THE SURVEY DATUM USED FOR THIS PROJECT IS NAVD88.
14. DRAIN TILE SYSTEMS DISTURBED DURING DEVELOPMENT MUST BE RECONNECTED BY THOSE RESPONSIBLE FOR THEIR DISTURBANCE UNLESS THE APPROVED ENGINEERING PLANS INDICATE HOW THE DRAIN TILE SYSTEM IS TO BE CONNECTED TO THE PROPOSED STORM WATER MANAGEMENT SYSTEM. ALL ABANDONED DRAIN TILES SHALL BE REMOVED IN THEIR ENTIRETY.
15. THE CONTRACTOR SHALL COMPLY WITH THE PROVISIONS OF 29 CFR 1926 WHEN WORKING NEAR POWER LINES. ALL COSTS OF COMPLYING WITH 29 CFR 1926 SHALL BE CONSIDERED INCLUDED IN THE COST OF THE CONTRACT.

16. DURING CONSTRUCTION OPERATIONS ALL LOOSE MATERIAL DEPOSITED IN THE FLOW LINE OF DRAINAGE STRUCTURES AND TEMPORARY DITCHES THAT OBSTRUCTS THE NATURAL FLOW OF WATER SHALL BE REMOVED AT THE CLOSE OF EACH WORKING DAY AT THE CONCLUSION OF THE CONSTRUCTION OPERATIONS. ALL DRAINAGE STRUCTURES SHALL BE CLEANED AS NECESSARY TO INSURE THAT THEY ARE FREE FROM ALL DIRT AND DEBRIS PRIOR TO THE FINAL INSPECTION OF THE PROJECT. THIS WORK SHALL BE CONSIDERED INCLUDED IN THE COST OF EARTH EXCAVATION.
17. EXCEPT AS NOTED ON THE PLANS, PAVEMENT GRADES SHOWN ARE AT THE TOP OF PAVEMENT SURFACES.
18. THE ENGINEER WILL BE THE SOLE JUDGE CONCERNING CURING TIME FOR THE VARIOUS HMA LIFTS.
19. FOR STABILIZATION, ALL TYPE III BARRICADES SHALL REQUIRE A MINIMUM OF FOUR SAND BAGS PER BARRICADE.
20. SEEDING SHALL NOT BE PERMITTED AT ANY TIME WHEN THE GROUND IS FROZEN, WET, OR IN AN UNTILLABLE CONDITION. LOCATIONS TO BE SEEDED WILL BE DETERMINED BY THE ENGINEER.
21. SHORT TERM PAVEMENT MARKING SHALL BE USED TO OUTLINE TRAVEL LANES FOR THE PRIME COAT APPLICATION AND EACH LIFT AND REMOVED WHEN PERMANENT MARKING IS IN PLACE.
22. ABANDONED UNDERGROUND UTILITIES THAT CONFLICT WITH CONSTRUCTION SHALL BE DISPOSED OF OUTSIDE THE LIMITS OF THE RIGHT OF WAY ACCORDING TO ARTICLE 202.03 OF THE STANDARD SPECIFICATIONS AND AS DIRECTED BY THE ENGINEER. THIS WORK WILL NOT BE PAID FOR SEPARATELY, BUT SHALL BE INCLUDED IN THE COST OF EARTH EXCAVATION.
23. ANY REFERENCE TO A STANDARD IN THESE PLANS SHALL BE INTERPRETED TO MEAN THE EDITION AS INDICATED BY THE SUBNUMBER SHOWN IN THE LIST OF STANDARDS OR THE COPY INCLUDED IN THESE PLANS.
24. THE FOLLOWING RATES OF APPLICATION HAVE BEEN USED IN CALCULATING PLAN QUANTITIES:

GRANULAR MATERIALS	2.05	TONS/CU YD
BIT MATERIALS (PRIME COAT) ON AGGREGATE BASES	0.375	GAL/SQ YD
BITUMINOUS MATERIALS (PRIME COAT)	0.08	GAL/SQ YD
FOR ADDITIONAL HMA LIFTS "FOG COAT"	0.08	GAL/SQ YD
FOR ADDITIONAL HMA LIFTS "FOG COAT"	0.05	GAL/SQ YD
AGGREGATE PRIME COAT	0.002	TONS/SQ YD
HMA RESURFACING	112	LBS/SQ YD/IN
SHORT TERM PAVEMENT MARKING	10	FT/100FT OF APPLICATION
MIX FOR CRACKS, JTS & FLOWYS	0.0003	TONS/SQ YD
LEVEL BINDER (HAND METHOD)	0.0005	TONS/SQ YD
TEMPORARY DITCH CHECKS	5	TONS AGGREGATE

25. MEMBERS OF JULIE KNOWN TO BE WITHIN THE LIMITS OF THE IMPROVEMENT ARE:

1. COMMONWEALTH EDISON COMPANY
2. NICOR GAS
3. FRONTIER COMMUNICATIONS
4. VILLAGE OF KIRKLAND WATER MAIN

COPYRIGHT © 2012 BY DAKTER & WOODMAN, INC. ALL RIGHTS RESERVED. PROJECT NO. 10-00208-00-BR. DATE: 05/17/12. 3:43:55 PM.



DESIGNED - CAC	REVISED -
DRAWN - BCD	REVISED -
CHECKED - TAC	REVISED -
DATE - 05/17/12	FILE - 110638-ConNotes.sht

**VILLAGE OF KIRKLAND
 HORTENSE ST BRIDGE OVER
 BULL RUN CREEK**

GENERAL NOTES

SCALE: NONE STA. TO STA.

MUN. ST.	SECTION	COUNTY	TOTAL SHEETS	SHEET NO.
1090	10-00208-00-BR	DEKALB	20	2
FED. ROAD DIST. NO. 3 ILLINOIS FED. AID PROJECT			CONTRACT NO. 87532	
			RRP-0371043	

HIGHWAY STANDARDS

- 000001-06 STANDARD SYMBOLS, ABBREVIATIONS AND PATTERNS
- 001001-02 AREAS OF REINFORCEMENT BARS
- 001006 DECIMAL OF AN INCH AND OF A FOOT
- 280001-06 TEMPORARY EROSION CONTROL SYSTEMS
- 515001-03 NAME PLATE FOR BRIDGES
- 635011-02 REFLECTOR MARKER AND MOUNTING DETAILS
- 701001-02 OFF-RD OPERATIONS, 2L, 2W, MORE THAN 15' (4.5 m) AWAY
- 701006-03 OFF-RD OPERATIONS, 2L, 2W, 15' (4.5 m) TO 24" (600mm) FROM PAVEMENT EDGE
- 701011-02 OFF-RD MOVING OPERATIONS, 2L, 2W, DAY ONLY
- 701301-04 LANE CLOSURE, 2L, 2W, SHORT TIME OPERATIONS
- 701311-03 LANE CLOSURE 2L, 2W MOVING OPERATIONS - DAY ONLY
- 701901-02 TRAFFIC CONTROL DEVICES
- 720001-01 SIGN PANEL MOUNTING DETAILS
- 720006-02 SIGN PANEL ERECTION DETAILS
- B.L.R. 17-4 TRAFFIC CONTROL DEVICES - DAY LABOR CONSTRUCTION
- B.L.R. 21-9 TYPICAL APPLICATION OF TRAFFIC CONTROL DEVICES FOR CONSTRUCTION ON RURAL LOCAL HIGHWAYS

EROSION CONTROL MAINTENANCE SCHEDULE

1. SILT FENCE - AT A MINIMUM, THE CONTRACTOR SHALL INSPECT ALL SILT FENCE WEEKLY OR AFTER EACH ONE-HALF INCH OR GREATER RAINFALL EVENT. ANY REQUIRED REPAIRS SHALL BE MADE BY THE CONTRACTOR TO KEEP THE SILT FENCE FUNCTIONAL AS DESIGNED.
2. EROSION BLANKET - AT A MINIMUM, THE CONTRACTOR SHALL INSPECT ALL EROSION BLANKET WEEKLY OR AFTER EACH ONE-HALF INCH OR GREATER RAINFALL EVENT. ANY REQUIRED REPAIRS SHALL BE MADE BY THE CONTRACTOR TO KEEP THE EROSION BLANKET FUNCTIONAL AS DESIGNED.
3. INLET AND PROTECTION - AT A MINIMUM, THE CONTRACTOR SHALL INSPECT ALL INLET AND PIPE PROTECTION WEEKLY OR AFTER EACH ONE-HALF INCH OR GREATER RAINFALL EVENT. ANY REQUIRED REPAIRS SHALL BE MADE BY THE CONTRACTOR TO KEEP THE INLET AND PIPE PROTECTION FUNCTIONAL AS DESIGNED.
4. TEMPORARY DITCH CHECKS - AT A MINIMUM, THE CONTRACTOR SHALL INSPECT ALL TEMPORARY DITCH CHECKS WEEKLY OR AFTER EACH ONE-HALF INCH OR GREATER RAINFALL EVENT. ANY REQUIRED REPAIRS SHALL BE MADE BY THE CONTRACTOR TO KEEP THE TEMPORARY DITCH CHECKS FUNCTIONAL AS DESIGNED.
5. INLET FILTERS - AT A MINIMUM, THE CONTRACTOR SHALL INSPECT ALL INLET FILTERS WEEKLY OR AFTER EACH ONE-HALF INCH OR GREATER RAINFALL EVENT. ANY REQUIRED REPAIRS SHALL BE MADE BY THE CONTRACTOR TO KEEP THE INLET FILTERS FUNCTIONAL AS DESIGNED.
6. THE EROSION CONTROL QUANTITIES PROVIDED IN THE PLANS ARE APPROXIMATE. THE ACTUAL NEED FOR QUANTITIES WILL BE DETERMINED IN THE FIELD BY THE ENGINEER AT THE TIME OF CONSTRUCTION.

SOIL EROSION AND SEDIMENT CONTROL NOTES:

1. ALL AREAS OF BARE GROUND WILL BE TEMPORARILY SEEDED EVERY 7 DAYS UNTIL PERMANENT EROSION CONTROL IS IN PLACE.
2. ALL AREAS WITHIN R.O.W. WILL BE RESTORED WITH 6" TOPSOIL, EROSION CONTROL BLANKET AND SEEDING, CLASS 2A.
3. DITCH CHECKS SHALL BE EITHER ROLLED EXCELSIOR OR TRIANGULAR SILT DIKES.
4. SOIL DISTURBANCE SHALL BE CONDUCTED IN SUCH A MANNER AS TO MINIMIZE EROSION. AREAS OF THE DEVELOPMENT SITE THAT ARE NOT TO BE GRADED SHALL BE PROTECTED FROM CONSTRUCTION TRAFFIC OR OTHER DISTURBANCE UNTIL FINAL SEEDING IS PERFORMED.
5. PROPERTIES AND CHANNELS ADJOINING THE DEVELOPMENT SITE SHALL BE PROTECTED FROM EROSION AND SEDIMENTATION.
6. SOIL EROSION AND SEDIMENT CONTROL FEATURES SHALL BE CONSTRUCTED PRIOR TO THE COMMENCEMENT OF HYDROLOGIC DISTURBANCE OF UPLAND AREAS.
7. DISTURBED AREAS SHALL BE STABILIZED WITH TEMPORARY OR PERMANENT MEASURES WITHIN (7) CALENDAR DAYS FOLLOWING THE END OF ACTIVE HYDROLOGIC DISTURBANCE.
8. ALL TEMPORARY SOIL EROSION AND SEDIMENT CONTROL MEASURES SHALL BE REMOVED WITHIN THIRTY (30) DAYS AFTER FINAL SITE STABILIZATION IS ACHIEVED OR AFTER THE TEMPORARY MEASURES ARE NO LONGER NEEDED. TRAPPED SEDIMENT AND OTHER DISTURBED SOIL AREAS SHALL BE PERMANENTLY STABILIZED.
9. SOIL STOCKPILES SHALL NOT BE LOCATED IN A FLOOD-PRONE AREA OR A DESIGNATED BUFFER PROTECTING WATERS OF THE UNITED STATES OR ISOLATED WATERS OF DEKALB COUNTY.
10. THE CONTRACTOR SHALL PROVIDE ADEQUATE RECEPTACLES FOR THE DEPOSITION OF ALL CONSTRUCTION MATERIAL DEBRIS GENERATED DURING THE DEVELOPMENT PROCESS. THE CONTRACTOR SHALL NOT CAUSE OR PERMIT THE DUMPING, DEPOSITING, DROPPING, THROWING, DISCARDING OR LEAVING OF CONSTRUCTION MATERIAL DEBRIS UPON OR INTO ANY DEVELOPMENT SITE, CHANNEL, WATERS OF THE U.S. OR ISOLATED WATERS OF DEKALB COUNTY. THE CONTRACTOR SHALL MAINTAIN THE DEVELOPMENT SITE FREE OF CONSTRUCTION MATERIAL DEBRIS.
11. ALL TEMPORARY AND PERMANENT EROSION AND SEDIMENT CONTROL MEASURES SHALL BE MAINTAINED IN AN EFFECTIVE WORKING CONDITION.
12. ALL SEDIMENTATION AND EROSION CONTROL MEASURES SHALL BE IN ACCORDANCE WITH THE "ILLINOIS URBAN MANUAL", LATEST EDITION, WHERE NOT ALREADY PROVIDED FOR WITHIN THE PLANS, SPECIFICATIONS AND SPECIAL PROVISIONS.
13. ESTABLISH PERMANENT STABILIZATION WITHIN 14 DAYS OF FINAL GRADING OR WHEN DISTURBED AREA IS LEFT IDLE FOR MORE THAN 14 DAYS.

COPYRIGHT © 2012 BY BAXTER & WOODMAN, INC.
 STATE OF ILLINOIS - PROFESSIONAL ENGINEER - PERM
 5/23/2012 10:32 AM
 \\snp001\p001\proj\10638-HWY-STD5\DWG\10638-HWY-STD5.sht



DESIGNED - CAC	REVISED -
DRAWN - BCD	REVISED -
CHECKED - TAO	REVISED -
DATE - 05/17/12	FILE - 10638-HWY-STD5.sht

**VILLAGE OF KIRKLAND
HORTENSE ST BRIDGE OVER
BULL RUN CREEK**

HIGHWAY STANDARDS & EROSION CONTROL NOTES

SCALE: NONE

STA. TO STA.

MUN. ST.	SECTION	COUNTY	TOTAL SHEETS	SHEET NO.
1090	10-00008-00-BR	DEKALB	20	3
			CONTRACT NO. 87532	
FED. ROAD DIST. NO. 3 ILLINOIS FED. AID PROJECT RRP-037643J				

SUMMARY OF QUANTITIES

CODE NUMBER	PAY ITEM	UNIT	CONSTRUCTION TYPE CODE 0014
			TOTAL QUANTITY
# 20200100	EARTH EXCAVATION	CU YD	150
20201200	REMOVAL AND DISPOSAL OF UNSUITABLE MATERIAL	CU YD	80
21101025	TOPSOIL FURNISH AND PLACE, 6"	SQ YD	590
25000210	SEEDING, CLASS 2A	ACRE	0.25
25000400	NITROGEN FERTILIZER NUTRIENT	POUND	18
25000500	PHOSPHORUS FERTILIZER NUTRIENT	POUND	18
25000600	POTASSIUM FERTILIZER NUTRIENT	POUND	18
25100050	EROSION CONTROL BLANKET	SQ YD	590
28000250	TEMPORARY EROSION CONTROL SEEDING	POUND	40
28000305	TEMPORARY DITCH CHECKS	FOOT	40
28000400	PERIMETER EROSION BARRIER	FOOT	82
28100807	STONE DUMPED RIPRAP, CLASS A4	TON	80
28200200	FILTER FABRIC	SQ YD	80
# 30300001	AGGREGATE SUBGRADE IMPROVEMENT	CU YD	85
40600100	BITUMINOUS MATERIALS (PRIME COAT)	GALLON	139
40600200	AGGREGATE (PRIME COAT)	TON	2
40603080	HOT MIX ASPHALT BINDER COURSE, IL-19 D, N50	TON	98.5
40603310	HOT-MIX ASPHALT SURFACE COURSE, MIX "C", N50	TON	39.3
44000100	PAVEMENT REMOVAL	SQ YD	222
50101500	REMOVAL OF EXISTING SUPERSTRUCTURES	EACH	1
50200100	STRUCTURE EXCAVATION	CU YD	43
# 50300280	CONCRETE ENCASEMENT	CU YD	8.7
50300300	PROTECTIVE COAT	SQ YD	185
50400305	PRECAST PRESTRESSED CONCRETE DECK BEAMS (17" DEPTH)	SQ FT	1378
# 50700105	TREATED TIMBER	F.B.M.	200
# 50800205	REINFORCEMENT BARS, EPOXY COATED	POUND	60
# 50901050	STEEL RAILING, TYPE SM	FOOT	86
# 51500100	NAME PLATES	EACH	1
# 58100200	WATERPROOFING MEMBRANE SYSTEM	SQ YD	153
# 58300100	PORTLAND CEMENT MORTAR FINISH COURSE	FOOT	301

* INDICATES SPECIALTY ITEM

CODE NUMBER	PAY ITEM	UNIT	CONSTRUCTION TYPE CODE 0014
			TOTAL QUANTITY
# 87100100	MOBILIZATION	L SUM	1
X7401216	TRAFFIC CONTROL AND PROTECTION (Special)	L SUM	1
72000100	SIGN PANEL - TYPE 1	SQ FT	12
* 78200410	GUARDRAIL MARKERS, TYPE A	EACH	8
20012754	STRUCTURAL REPAIR OF CONCRETE (DEPTH EQUAL TO OR LESS THAN 5 INCHES)	SQ FT	100
20030850	TEMPORARY INFORMATION SIGNING	SQ FT	52
X0325740	FIBER WRAP	SQ FT	250
X2070304	POROUS GRANULAR EMBANKMENT, SPECIAL	CU YD	180

* INDICATES SPECIALTY ITEM

NOTES:

- ITEMS 50700105 AND 58300100 ARE CONTINGENCY ITEMS AND QUANTITIES MAY BE REDUCED OR ELIMINATED BASED ON FIELD CONDITIONS.

CONVEYED BY: 2012 05 17 10:58 AM - WOODMAN INC
 STATE OF ILLINOIS - PROFESSIONAL DESIGN FIRM
 18350E AVENUE - DEKALB COUNTY, ILLINOIS 62521-2702
 TEL: 314.237.7002 FAX: 314.237.7002
 WWW: WWW.WOODMANINC.COM
 PROJECT: 110638-500-SHT



DESIGNED - CAC	REVISED -
DRAWN - BCD	REVISED -
CHECKED - TAO	REVISED -
DATE - 05/17/12	FILE - 110638-500.sht

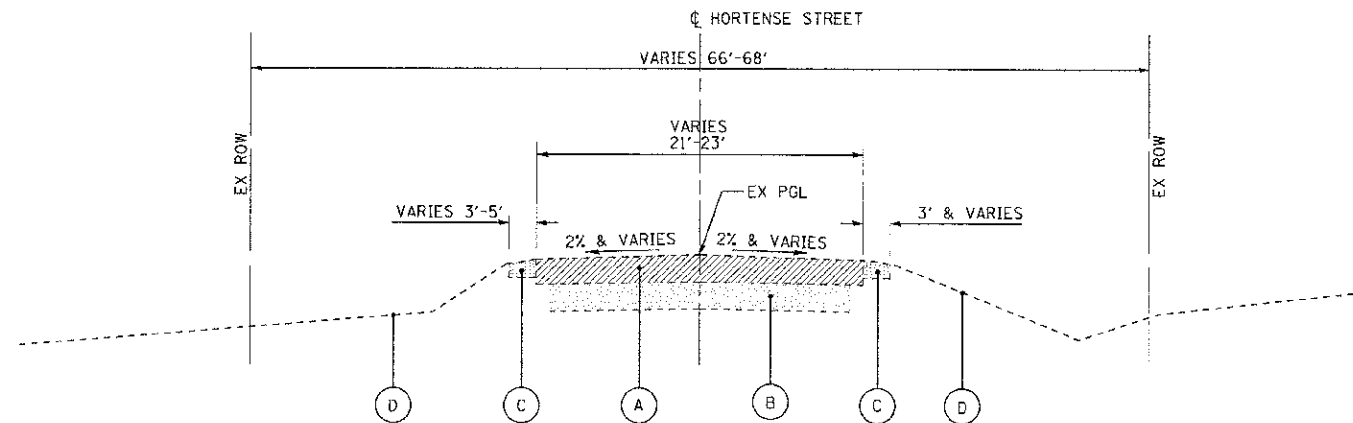
**VILLAGE OF KIRKLAND
HORTENSE ST BRIDGE OVER
BULL RUN CREEK**

SUMMARY OF QUANTITIES

SCALE: NONE

STA. TO STA.

MUN. ST.	SECTION	COUNTY	TOTAL SHEETS	SHEET NO.
1090	10-00008-00-BR	DEKALB	20	4
FED. ROAD DIST. NO. 3 ILLINOIS FED. AID PROJECT			CONTRACT NO. 87532 RRP-037043	



**EXISTING TYPICAL SECTION
HORTENSE STREET**

STA. 49+63.29 TO STA. 50+36.00
(BRIDGE OMISSION STA 49+78.29 TO STA 50+21.61)

EXISTING LEGEND

- (A) HOT-MIX ASPHALT SURFACE AND BINDER COURSE (AVG DEPTH 4")
- (B) AGGREGATE SUBBASE (VARIES 6" TO 12")
- (C) TURF SHOULDERS
- (D) EXISTING GROUND
- [Hatched Box] PAVEMENT REMOVAL
- [Dotted Box] SUBBASE AND SHOULDER REMOVAL (INCLUDED IN THE COST OF EARTH EXCAVATION)

PROPOSED LEGEND

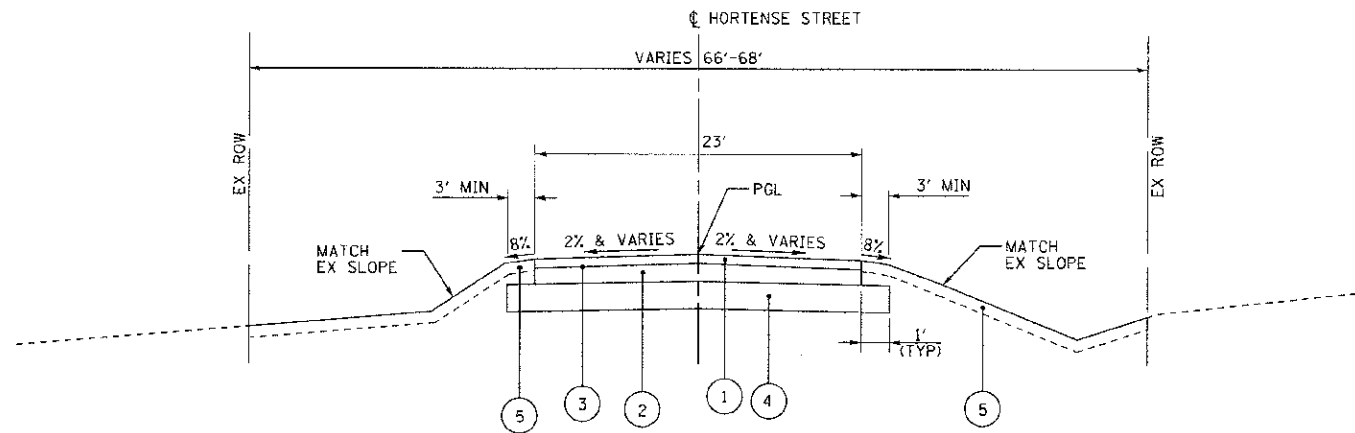
- (1) HOT-MIX ASPHALT SURFACE COURSE, MIX "C", N50-1 1/2"
- (2) HOT-MIX ASPHALT BINDER COURSE, IL-19.0, N50-2 1/2"
- (3) BITUMINOUS MATERIALS (PRIME COAT)
- (4) AGGREGATE SUBGRADE IMPROVEMENT, 12"
- (5) TOPSOIL FURNISH AND PLACE, 6"
SEEDING, CLASS 2A,
EROSION CONTROL BLANKET

NOTES:

1. IT SHALL BE THE RESPONSIBILITY OF THE CONTRACTOR TO VERIFY THE THICKNESS OF THE EXISTING PAVEMENTS TO BE REMOVED. NO ADDITIONAL COMPENSATION WILL BE ALLOWED BECAUSE OF VARIATIONS FROM THE ASSUMED THICKNESS SHOWN ON THE PLANS.
2. THE TURF SHOULDER SHALL BE A MINIMUM OF 3 FEET WITH A MAXIMUM SLOPE OF 8%. THE FRONTSLOPE SHALL MATCH THE EXISTING SIDE SLOPE.

HOT-MIX ASPHALT MIXTURE REQUIREMENTS

	HMA BINDER	HMA SURFACE
PG GRADE	PG 64-22	PG 64-22
DESIGN AIR VOIDS	4.0% @ N50	4.0% @ N50
MIXTURE COMPOSITION	IL 19.0	IL 9.5
FRICTION AGGREGATE		MIXTURE C
DENSITY TEST METHOD	CORES	CORES



**PROPOSED TYPICAL SECTION
HORTENSE STREET**

STA. 49+63.29 TO STA. 50+36.00
(BRIDGE OMISSION STA 49+78.29 TO STA 50+21.61)

COPYRIGHT © 2009 BY DEXTER & WOODMAN, INC.
 STATE OF ILLINOIS - PROFESSIONAL DESIGNER
 LICENSE NO. 084-001333
 PROJECT NO. 10-00008-00-BR
 SHEET NO. 5 OF 5



DESIGNED - CAC	REVISED -
DRAWN - BCD	REVISED -
CHECKED - TAD	REVISED -
DATE - 05/17/12	FILE - 110636-TypSec.dwg

**VILLAGE OF KIRKLAND
HORTENSE ST BRIDGE OVER
BULL RUN CREEK**

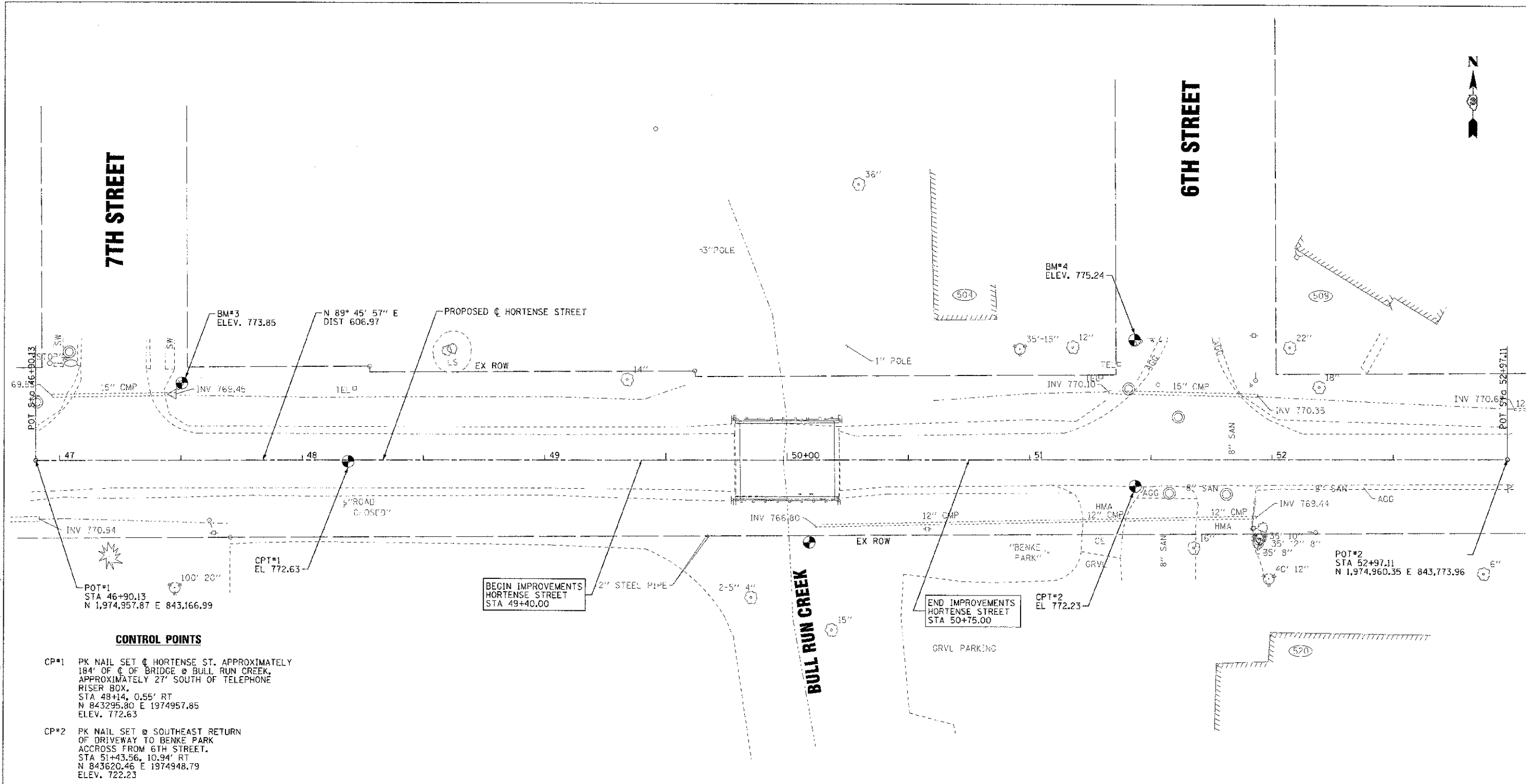
SCALE: NONE

TYPICAL SECTIONS

STA. TO STA.

MIN. STA.	SECTION	COUNTY	TOTAL SHEETS	SHEET NO.
1090	10-00008-00-BR	DEKALB	20	5

CONTRACT NO. 87532
FED. ROAD DIST. NO. 3 ILLINOIS FED. AID PROJECT RRP-03710451



CONTROL POINTS

- CP#1 PK NAIL SET @ HORTENSE ST. APPROXIMATELY 184' OF C OF BRIDGE @ BULL RUN CREEK, APPROXIMATELY 27' SOUTH OF TELEPHONE RISER BOX.
STA 48+14, 0.55' RT
N 843295.80 E 1974957.85
ELEV. 772.63
- CP#2 PK NAIL SET @ SOUTHEAST RETURN OF DRIVEWAY TO BENKE PARK ACCROSS FROM 6TH STREET.
STA 51+43.56, 10.94' RT
N 843620.46 E 1974948.79
ELEV. 722.23

BENCHMARKS

- BM#3 NORTH ARROW BOLT OF FIRE HYDRANT ON NORTHEAST CORNER OF 7TH STREET AND HORTENSE ST.
STA 47+50, 32.0' LT
ELEV. 773.85
- BM#4 NORTH ARROW BOLT OF FIRE HYDRANT ON NORTHEAST CORNER OF 6TH STREET AND HORTENSE ST.
STA 51+43.34, 48.5' LT
ELEV. 775.24
- PNT 100 BRASS DISC ON SE WINGWALL OF BRIDGE LOCATED AT BULL RUN AND ROUTE 72 ESTABLISHED ELEV. 768.24 SHOT VIA GPS GEOID P3:767.93

BEGIN IMPROVEMENTS
HORTENSE STREET
STA 49+40.00

END IMPROVEMENTS
HORTENSE STREET
STA 50+75.00

COPYRIGHT © 2008 BY DIXIED & WOODMAN, INC.
 STATE OF ILLINOIS - PROFESSIONAL DESIGN FIRM
 LICENSE NO. 021-072120E
 PROJECT NO. 1090-00-008-00-BR
 SHEET NO. 7



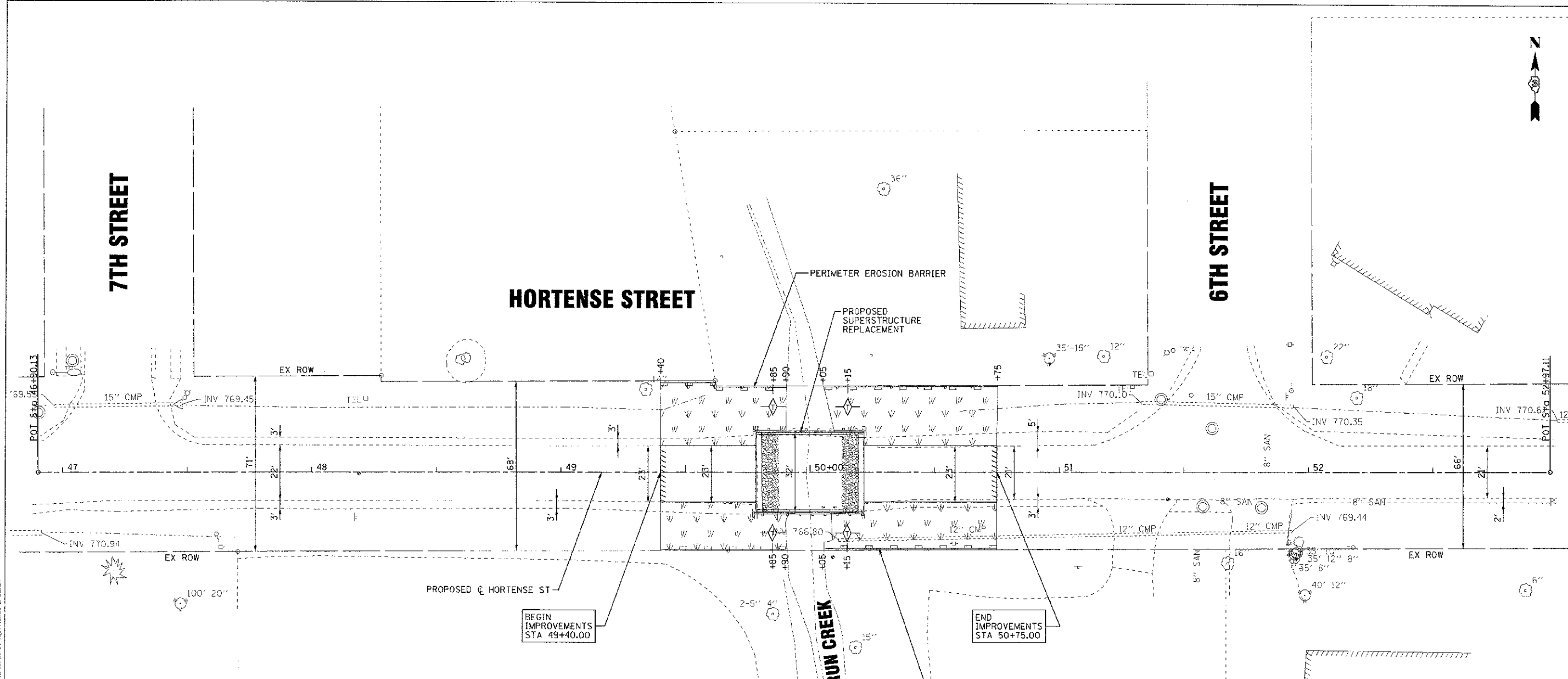
DESIGNED - CAC	REVISED -
DRAWN - BCD	REVISED -
CHECKED - TAO	REVISED -
DATE - 05/17/12	FILE - 11063B-Allgr.plt

**VILLAGE OF KIRKLAND
HORTENSE ST-BRIDGE OVER
BULL RUN CREEK**

ALIGNMENT & BENCHMARKS

SCALE: NONE	STA. 49+40.00 TO STA. 50+75.00	FED. ROAD DIST. NO. 3 ILLINOIS FED. AID PROJECT RRP-037(043)
-------------	--------------------------------	--

MAIN ST.	SECTION	COUNTY	TOTAL SHEETS	SHEET NO.
1090	10-00008-00-BR	DEKALB	20	7
			CONTRACT NO. 87532	



LEGEND

- PERIMETER EROSION BARRIER
- TEMPORARY DITCH CHECK
- TEMPORARY EROSION CONTROL SEEDING,
EROSION CONTROL BLANKET
SEEDING, CL 2A
- STONE DUMPED RIPRAP, CLASS A4 (TYP)
& FILTER FABRIC (TYP)
(SEE BRIDGE PLANS)

CADD FILE: \\sawtooth\project\110638\110638-EROSION CONTROL PLAN.dwg
 DATE: 05/17/12
 DRAWN BY: BCD
 CHECKED BY: TAO
 DESIGNED BY: CAC
 FILE: 110638-Erosion.dwg



DESIGNED - CAC	REVISED -
DRAWN - BCD	REVISED -
CHECKED - TAO	REVISED -
DATE - 05/17/12	FILE - 110638-Erosion.dwg

**VILLAGE OF KIRKLAND
 HORTENSE ST BRIDGE OVER
 BULL RUN CREEK**

EROSION CONTROL PLAN

SCALE: 1"=20' STA. 47+00 TO STA. 52+50

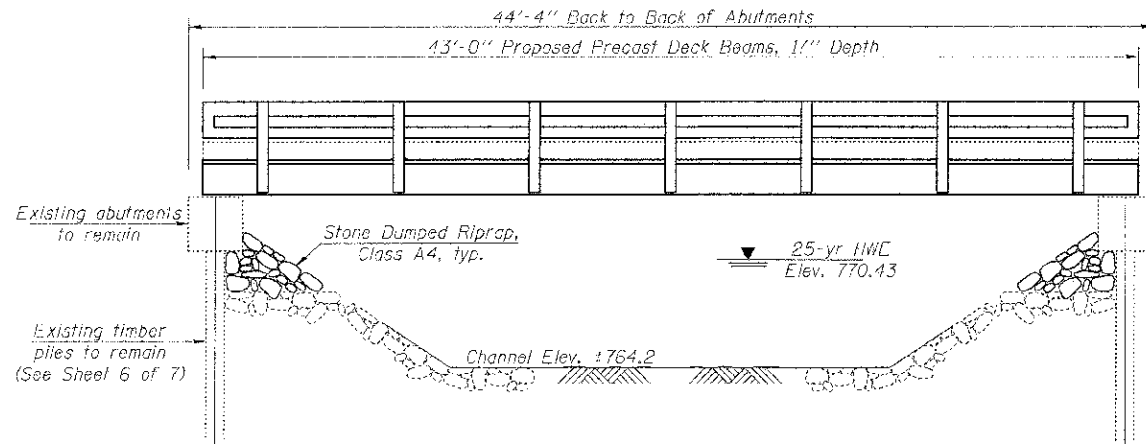
MLK. ST.	SECTION	COUNTY	TOTAL SHEETS	SHEET NO.
1090	10-00008-00-BR	DEKALB	20	9
CONTRACT NO. 87532			RPP-0370431	

FED. ROAD DIST. NO. 3 ILLINOIS FED. AID PROJECT

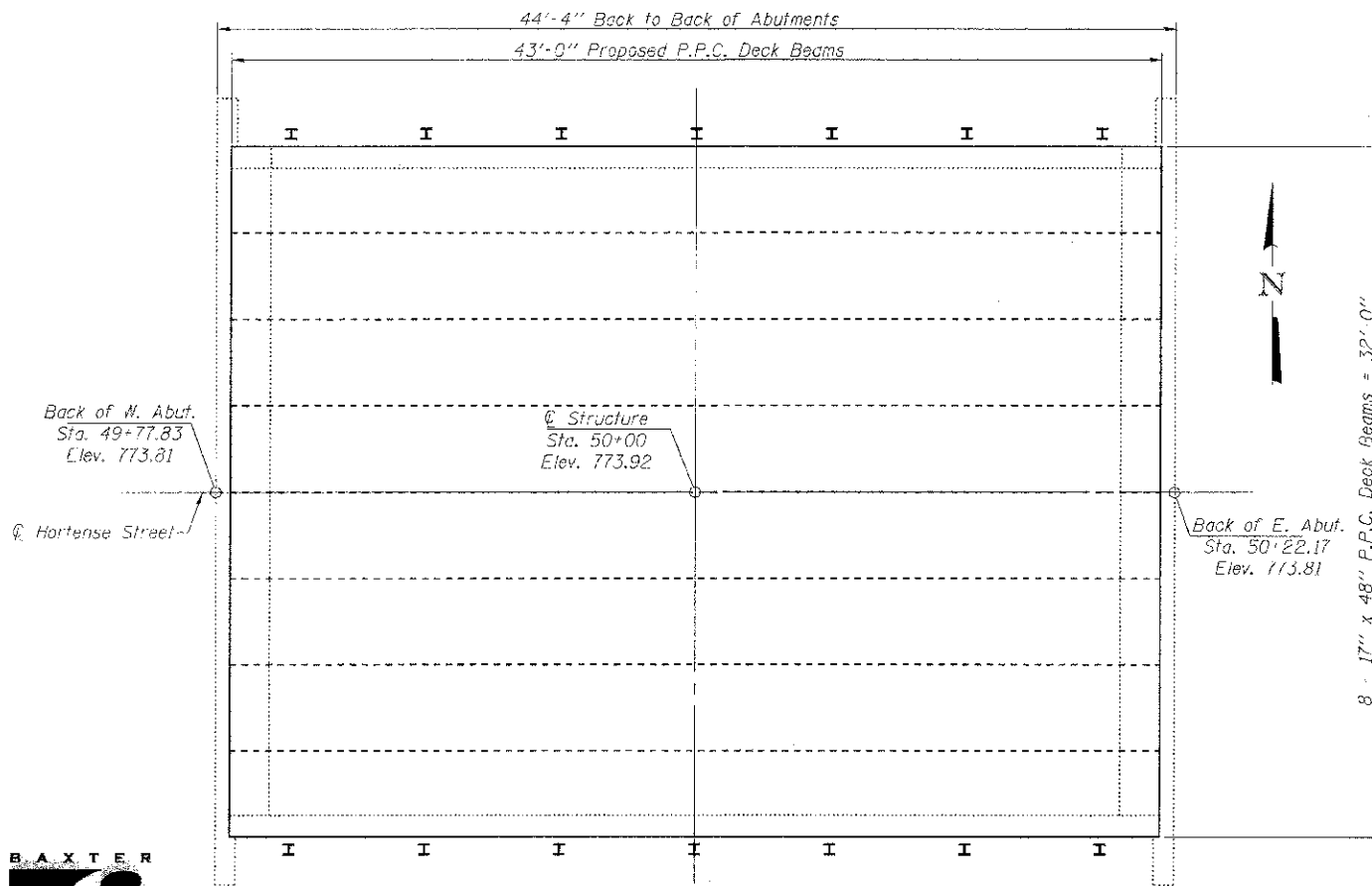
Benchmark: North arrow bonnet of fire hydrant at Northwest corner of Hortense Street and 6th Street. Elev. = 775.24

Existing Structure: SN 019-4002, built in 1969, the existing bridge is a single-span precast prestressed concrete deck beam superstructure supported by pile bent abutments and timber piles. The structure measures 44'-4" back to back of abutments, and 32'-0" out to out. Precast prestressed concrete deck beams to be removed and replaced. Existing abutments and piles to remain in place.

Salvage existing abutments.



ELEVATION



PLAN

DESIGN SPECIFICATIONS
2010 AASHTO LRFD Bridge Design Specifications with 2010 and 2011 Interims

LOADING HL-93
Alicw 50#/sq. ft. for future wearing surface.

DESIGN STRESSES

FIELD UNITS
f'c = 3,500 psi
fy = 60,000 psi (Reinforcement)

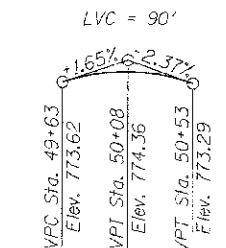
PRECAST PRESTRESSED UNITS
f'c = 6,000 psi
f'ci = 5,000 psi
fpu = 270,000 psi (Strands)
fpbt = 201,960 psi (Strands)

BULL RUN CREEK
RE-BUILT 2012 BY
VILLAGE OF KIRKLAND
DEKALB COUNTY
SEC. 10-00008-00-BR
STA. 50+00
STR. NO. 019-4002 LOADING HL-93

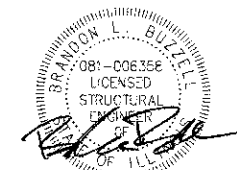
NAME PLATE
See Std. 515001

INDEX OF SHEETS

1. General Plan
2. Superstructure
3. 17" x 48" PPC Deck Beam
4. 17" x 48" PPC Deck Beam Details
5. Steel Railing, Type SM
6. Substructure Repairs
7. Concrete Repair Details



PROFILE GRADE
Along @ Structure



DATE: 5/23/12
LICENSE EXPIRES 11/30/12

I certify that to the best of my knowledge, information and belief, this bridge design is structurally adequate for the design loading shown on the plans. The design is an economical one for the style of the structure and complies with the requirements of the current AASHTO LRFD Bridge Design Specifications.

GENERAL NOTES:

- Reinforcement bars designated (E) shall be epoxy coated.
- Plan dimensions and details relative to existing plans are subject to nominal construction variations. The Contractor shall field verify existing dimensions and details affecting new construction and make necessary approved adjustments prior to construction or ordering of materials. Such variations shall not be cause for additional compensation for a change in scope of the work, however, the Contractor will be paid for the quantity actually furnished at the unit price bid for the work.
- Protective coat shall not be applied to surfaces in which Waterproofing Membrane System is applied.
- Existing Name Plate shall be cleaned and relocated next to new Name Plate. Cost included with Name Plates.
- Existing reinforcement shall be cleaned and incorporated into the new construction. Cost included with Structural Repair of Concrete.
- HMA Surface Course on bridge shall be built in accordance with Section 582 of the Standard Specifications unless directed otherwise by the Engineer.

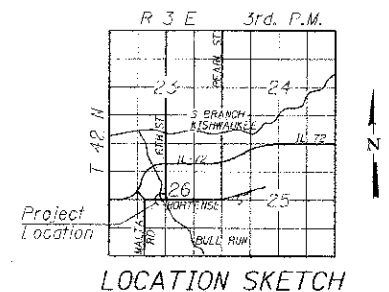
TOTAL BILL OF MATERIAL

ITEM	UNIT	SUPER	SUB	TOTAL
Stone Dumped Riprap, Class A4	Ton		80	80
Haf-Mix Asphalt Surface Course, Mix "C", N50	Ton	20		20
Removal of Existing Superstructures	Each	1		1
Structure Excavation	Cu Yd		43	43
Concrete Encasement	Cu Yd		0.7	0.7
Reinforcement Bars, Epoxy Coated	Pound		50	50
Precast Prestressed Concrete Deck Beams (17" Depth)	Sq Ft	1,376		1,376
Steel Railing, Type SM	Foot	86		86
Name Plates	Each	1		1
Waterproofing Membrane System	Sq Yd	153		153
Portland Cement Mortar Faring Course	Foot	301		301
Fiber Wrap	Sq Ft		250	250
Porous Granular Embankment, Special	Cu Yd		100	100
Structural Repair of Concrete (Depth Equal To Or Less Than 5 Inches)	Sq Ft		100	100
Treated Timber	F.B.M.		200	200

WATERWAY INFORMATION

Drainage Area = 2624 Acres Low Grade Elev. 773.00' @ Sta. 100' west of @

Flood	Freq. Yr.	Q C.F.S.	Opening Sq. Ft.		Nat. H.W.L.	Head - Ft.		Headwater El.	
			Exist.	Prop.		Exist.	Prop.	Exist.	Prop.
Design	10	498	112.0	112.0	769.96	0.01	0.01	769.97	769.97
Base	25	642	129.0	129.0	770.43	0.05	0.05	770.51	770.51
Overtopping	100	855	148.0	148.0	771.03	0.20	0.20	771.23	771.23
Max. Calc.	500	1110	165.0	165.0	771.54	0.53	0.53	772.07	772.07



GENERAL PLAN
HORTENSE STREET OVER BULL RUN
SEC. 10-00008-00-BR
DEKALB COUNTY
STATION 50+00
STRUCTURE NO. 019-4002

COPYRIGHT © 2012 BY BAXTER & WOODMAN, INC. ALL RIGHTS RESERVED. THIS DOCUMENT IS THE PROPERTY OF BAXTER & WOODMAN, INC. AND IS NOT TO BE REPRODUCED OR TRANSMITTED IN ANY FORM OR BY ANY MEANS, ELECTRONIC OR MECHANICAL, INCLUDING PHOTOCOPYING, RECORDING, OR BY ANY INFORMATION STORAGE AND RETRIEVAL SYSTEM. WITHOUT THE WRITTEN PERMISSION OF BAXTER & WOODMAN, INC.



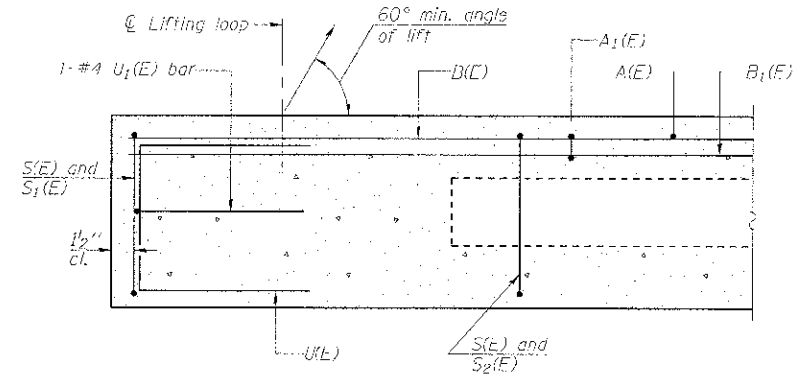
FILE NAME	USER NAME	DESIGNED AS	REVISED
		CHECKED BAB	REVISED
		DRAWN BCD	REVISED
		CHECKED BLB	REVISED

VILLAGE OF KIRKLAND
HORTENSE ST BRIDGE OVER
BULL RUN CREEK

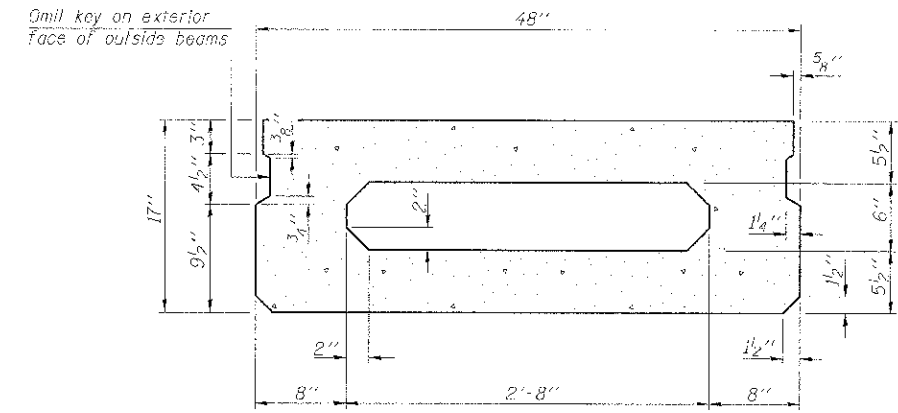
GENERAL PLAN
STRUCTURE NO. 019-4002
SHEET NO. 1 OF 7 SHEETS

MUN. ST.	SECTION	COUNTY	TOTAL SHEETS	SHEET NO.
1090	10-00008-00-BR	DEKALB	20	10

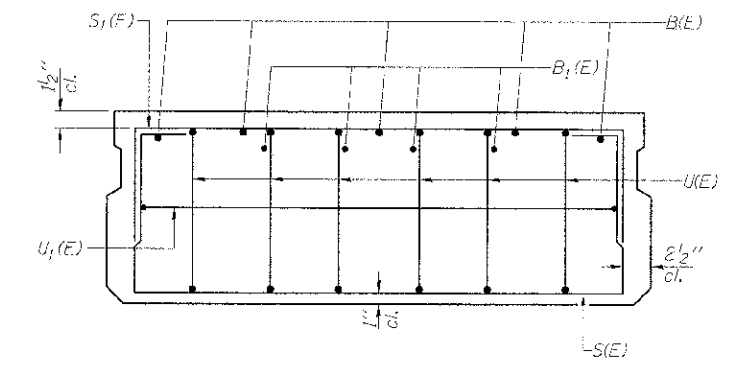
CONTRACT NO. 87532
FED. ROAD DIST. NO. 3 BILLING: FED. AID PROJECT RFP-0310430



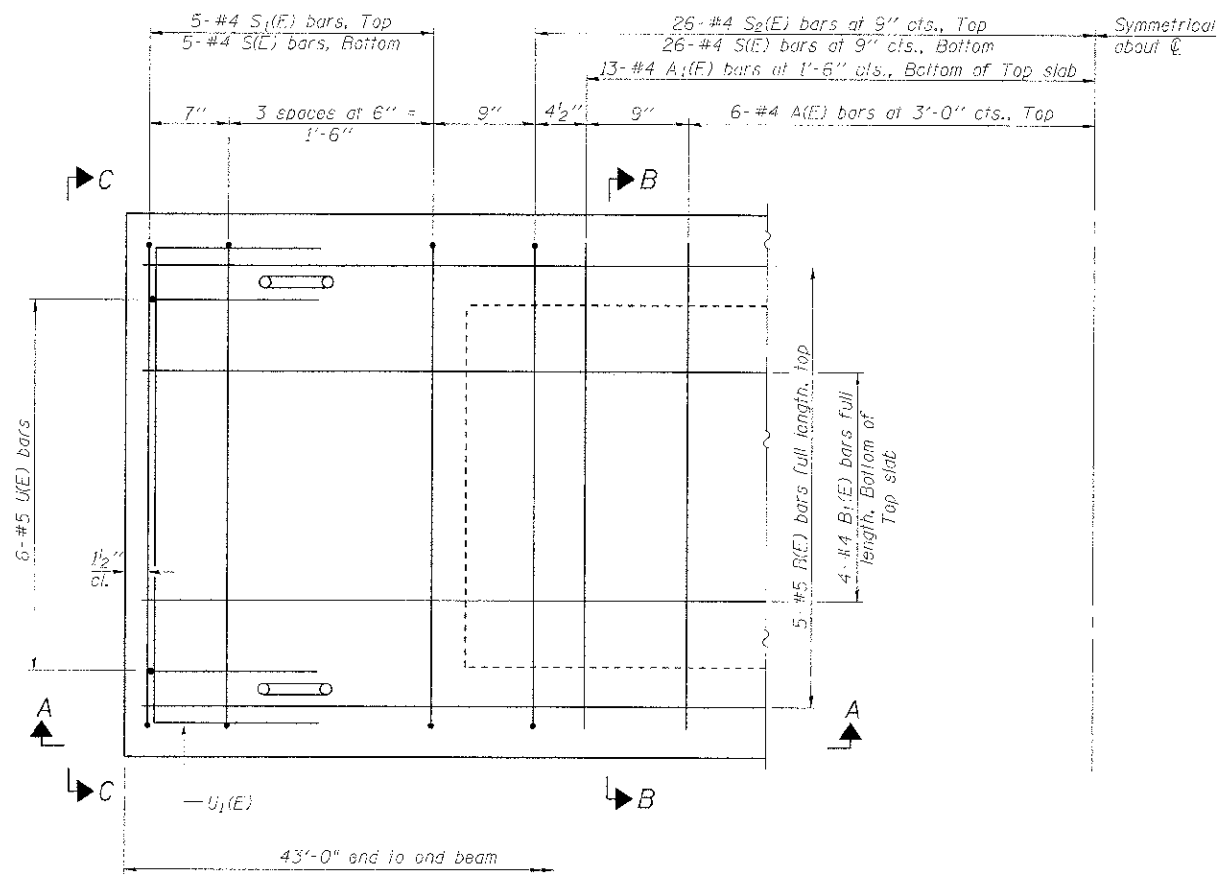
SECTION A-A



SECTION B-B
(Showing dimensions)

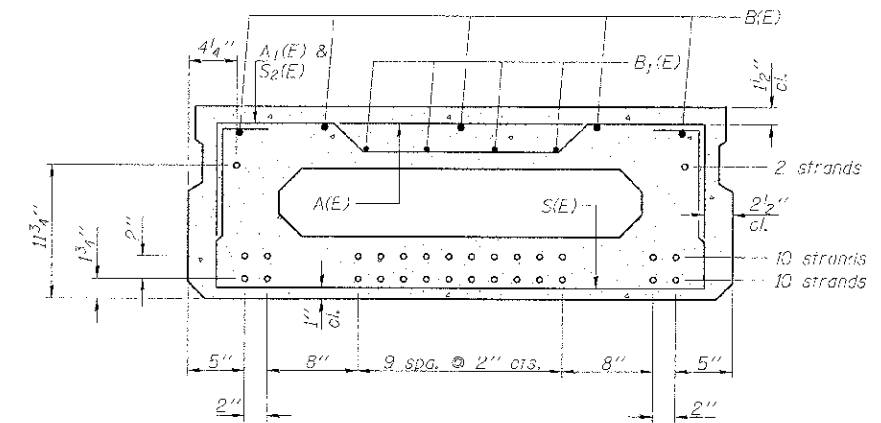


VIEW C-C



PLAN VIEW

Note: Spacing of S(E) and S2(E) bars may be adjusted up to 4" in the immediate area of the transverse tie diaphragms to miss the block outs for the transverse ties.



SECTION B-B
(Showing reinforcement and permissible strand locations)

Note: Place the number of strands specified in each row symmetrically about the centerline of beam in the permissible strand locations shown.

MINIMUM BAR LAP
#4 bar = 2'-0"
#5 bar = 2'-6"

BAR LIST
ONE BEAM ONLY
(For information only)

Bar	No.	Size	Length	Shape
A(E)	12	#4	3'-7"	—
A1(E)	26	#4	5'-10"	—
B(E)	5	#5	44'-1"	—
B1(E)	4	#4	44'-1"	—
S(E)	52	#4	6'-3"	U
S1(E)	10	#4	5'-3"	U
S2(E)	52	#4	5'-6"	U
U(E)	12	#5	3'-8"	U
U1(E)	2	#4	6'-0"	U

Note: See sheet 4 of 7 for additional details and Bill of Material.

CONTRACTOR: BAKER & WOODMAN, INC.
 STATE OF ILLINOIS PROFESSIONAL ENGINEER
 LICENSE NO. 184 0002 EXP. 03/31/2012
 PROJECT NO. 05/04/12
 DRAWN BY: BCD
 CHECKED BY: BLB
 DATE: 05/04/12

PD-1748-0 7-1-10

FILE NAME:	USER NAME:	DESIGNED AS:	REVISED:
		CHECKED RAB	REVISED:
		DRAWN BCD	REVISED:
		CHECKED BLB	REVISED:

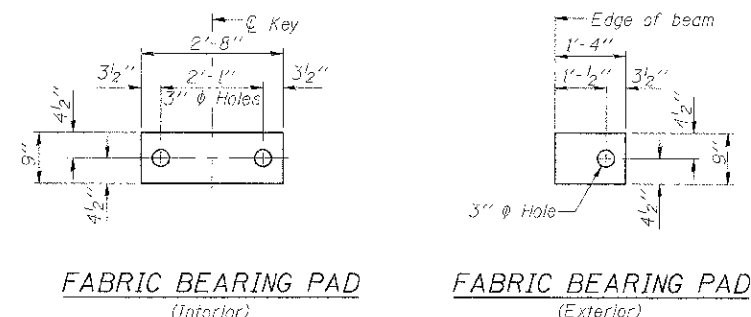
VILLAGE OF KIRKLAND
HORTENSE ST BRIDGE OVER
BULL RUN CREEK

17" x 48" PPC DECK BEAM
STRUCTURE NO. 019-4002

SHEET NO. 3 OF 7 SHEETS

MUN. ST.	SECTION	COUNTY	TOTAL SHEETS	SHEET NO.
1090	10-00008-00-BH	DEKALB	20	12

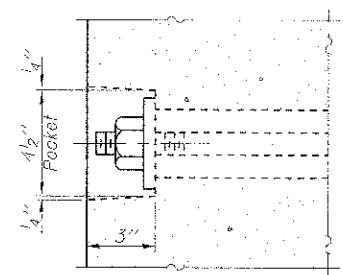
CONTRACT NO. 87532
FED. ROAD DIST. NO. 3 ILLINOIS FED. AID PROJECT RFP-037043



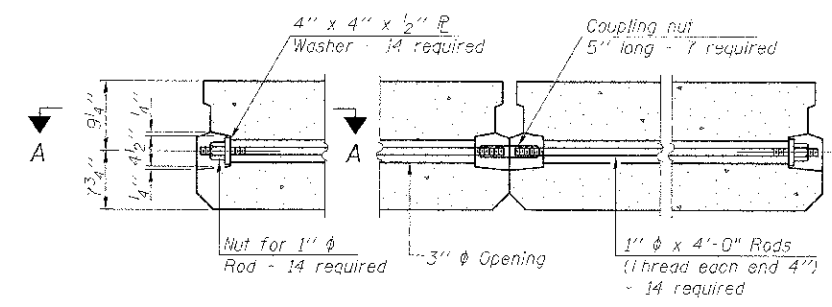
FABRIC BEARING PAD
(Interior)

FABRIC BEARING PAD
(Exterior)

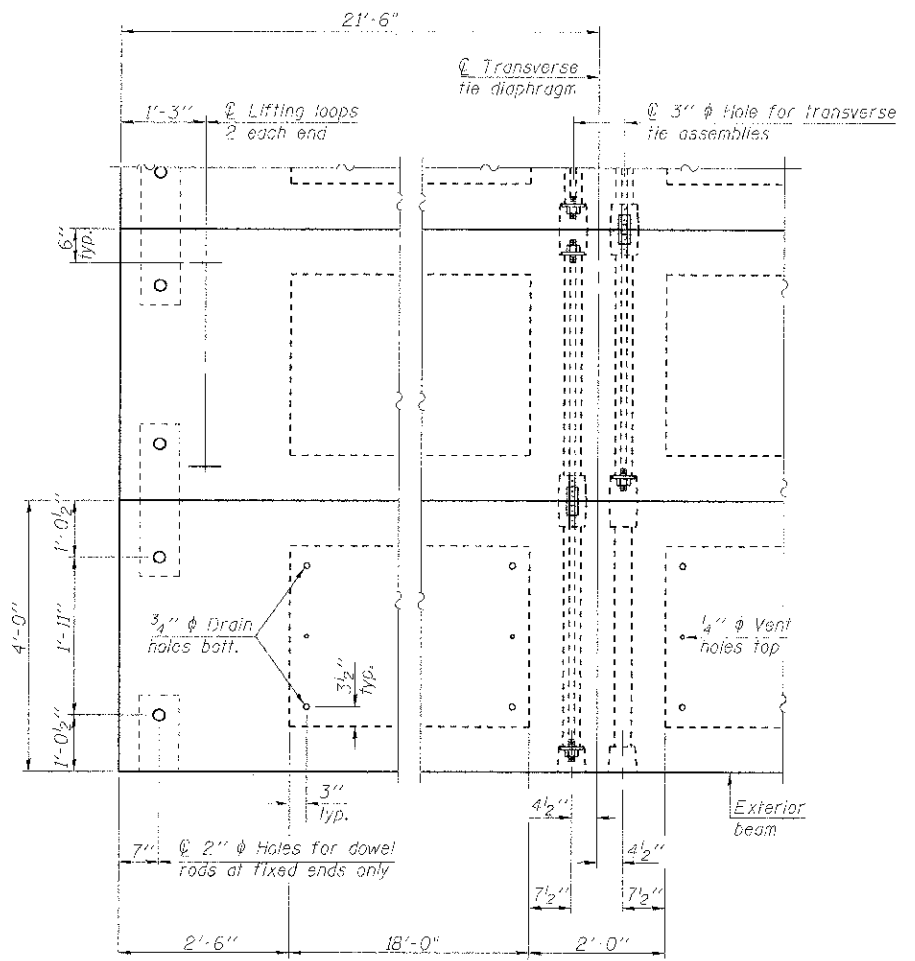
FIXED
Notes:
All bearing pads shall be 1" thick.
Omit holes when using expansion bearings.
Expansion bearing pad shall be bonded to the substructure.



SECTION A-A

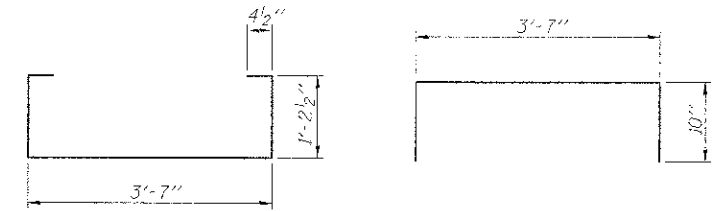


TYPICAL TRANSVERSE TIE ASSEMBLY



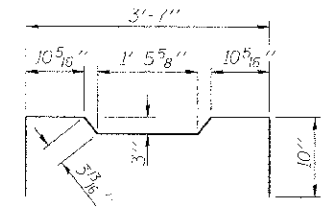
PLAN VIEW

Note: Connect beams in pairs with the transverse tie configuration shown.



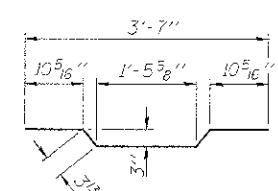
BAR S1(E)

BAR S2(E)

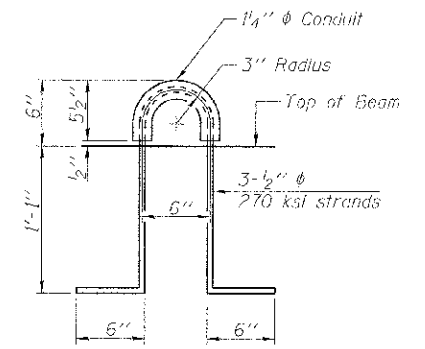


BAR U1(E)

BAR U2(E)



BAR A1(E)



LIFTING LOOP DETAIL

BILL OF MATERIAL

Precast Prestressed Conc. Deck Bms. (17" depth)	Sq. Ft.	1,375
---	---------	-------

NOTES

- Prestressing steel shall be uncoated high strength, low relaxation 7-wire strand, Grade 270. The nominal diameter shall be 1/2" and the nominal cross-sectional area shall be 0.153 sq. in.
- The 1" rods in the transverse tie assembly shall be tightened to a snug fit and the threads set. Pockets on exterior faces of bridge shall be filled with grout after transverse tie assembly is in place.
- Reinforcement bars shall conform to ASTM A 706, Grade 60. (See Special Provisions).
- Two 1/2" fabric adjusting shims of the dimensions of the exterior bearing pad shall be provided for each bearing pad location.
- A minimum 2 1/2" diameter lifting pin shall be used to engage the lifting loops during handling.
- Corrosion Inhibitor, per Article 1020.05(b)(12) and 1021.06 of the Standard Specifications, shall be used in the concrete for precast prestressed concrete deck beams.
- Compressive strength of prestressed concrete, f'c, shall be 6000 psi.
- Compressive strength of prestressed concrete at release, f'ci, shall be 5000 psi.

ENGINEER: 2012 BY BAXTER & WOODMAN, INC.
 STATE OF MISSISSIPPI PROFESSIONAL ENGINEERING FIRM
 LICENSE NO. BE 0007
 EXPIRES 12/31/13
 PROJECT NO. 12-000008-00-BR
 SHEET NO. 4 OF 7

PD-1748-OD 7-1-10

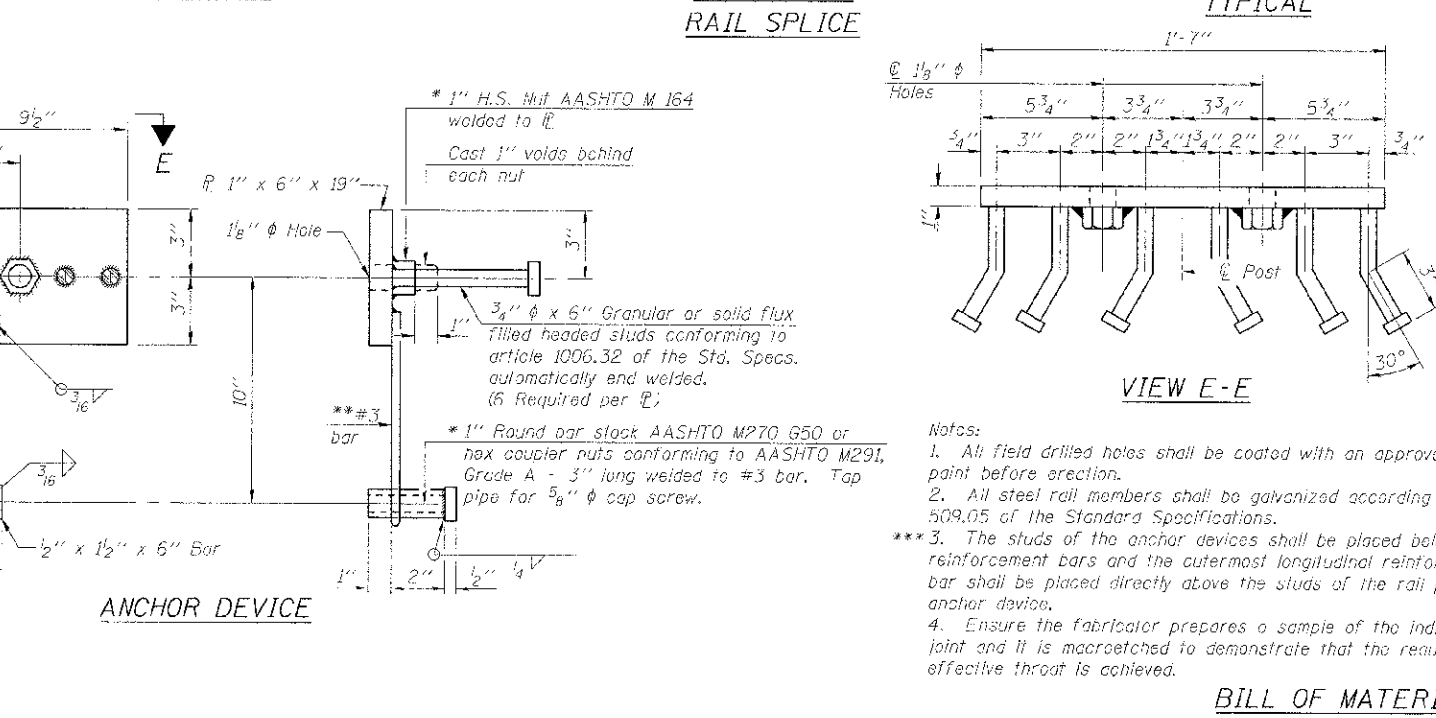
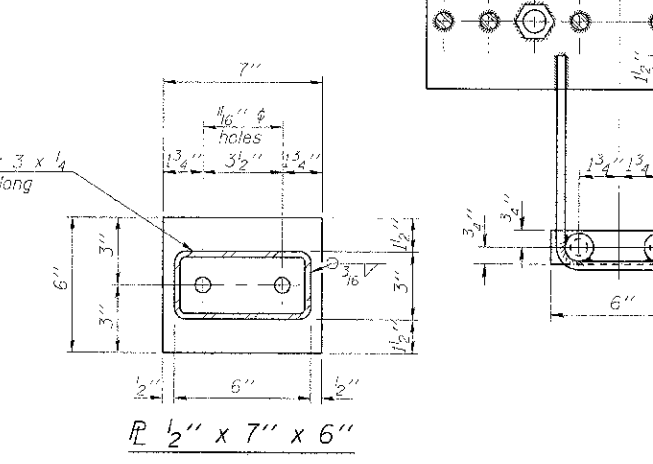
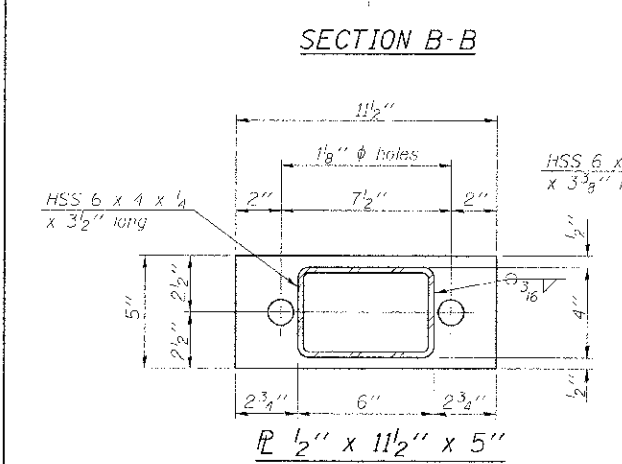
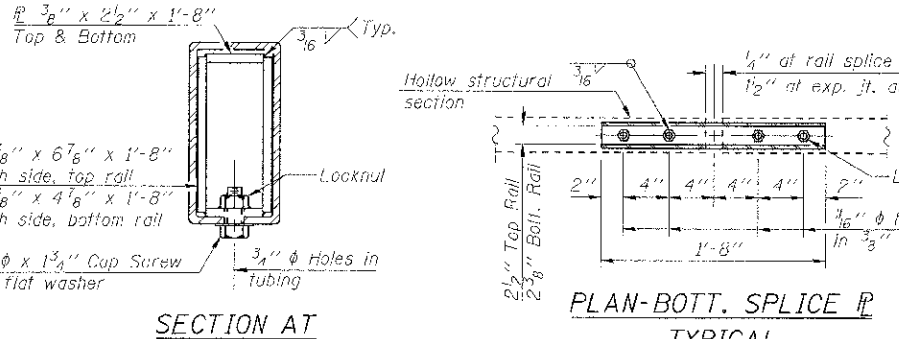
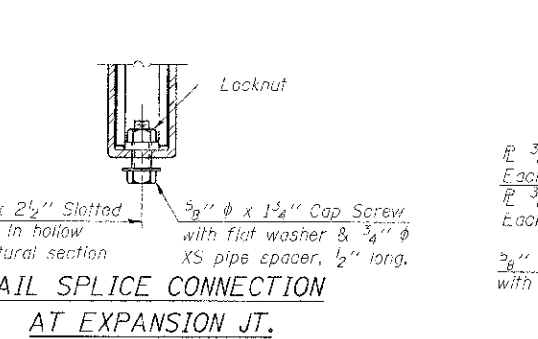
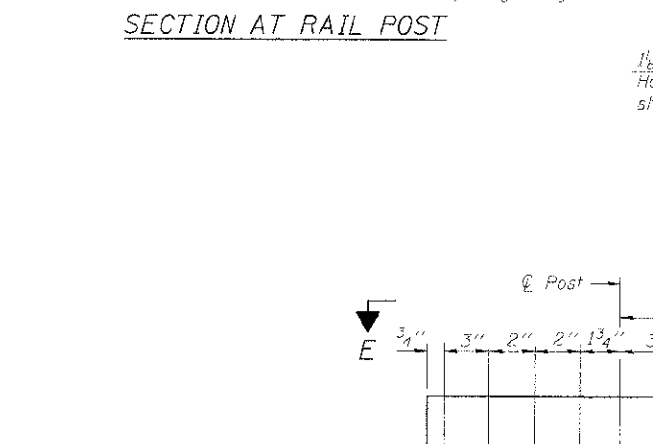
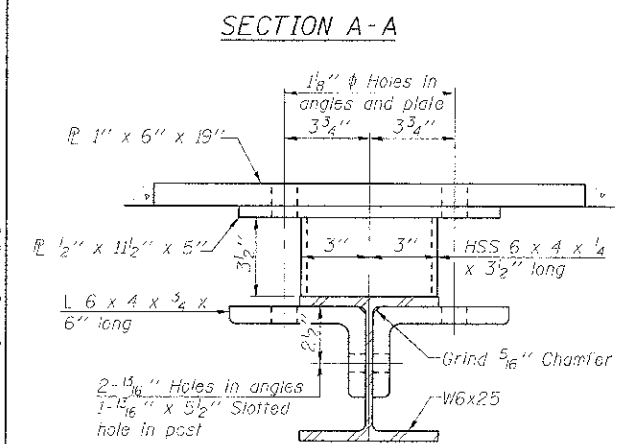
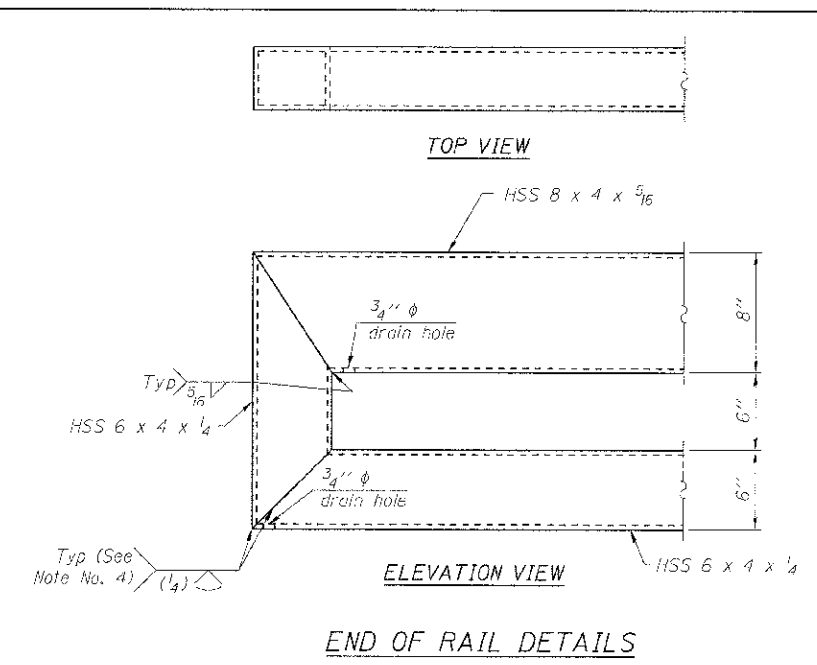
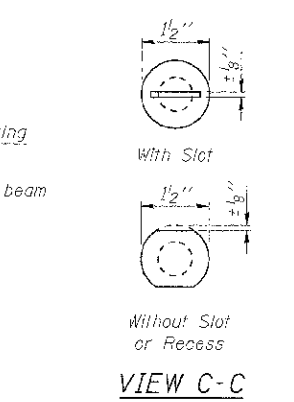
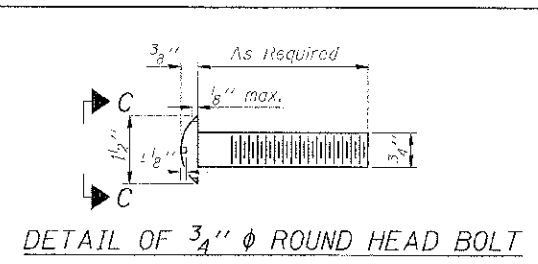
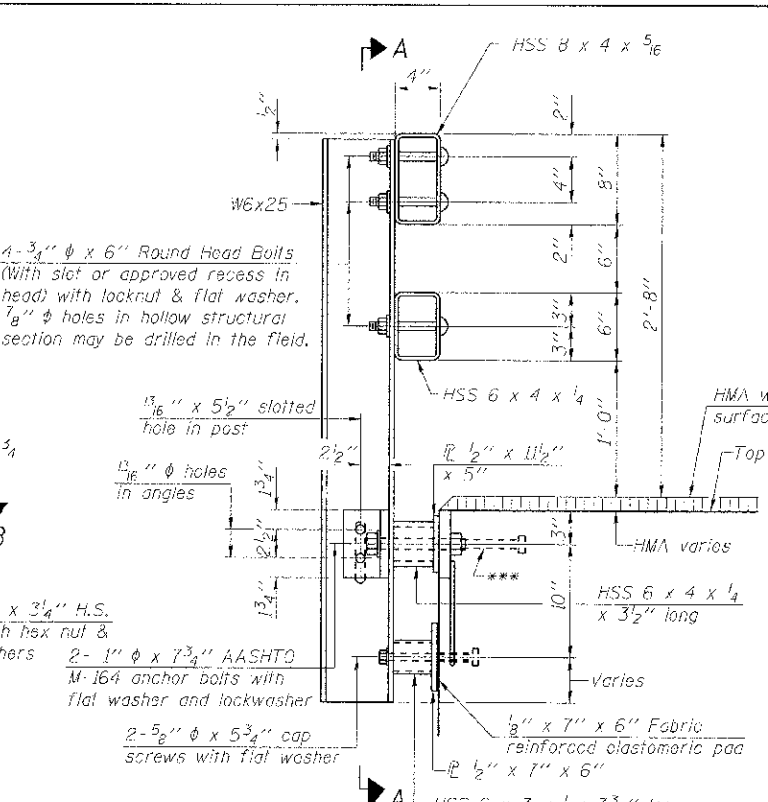
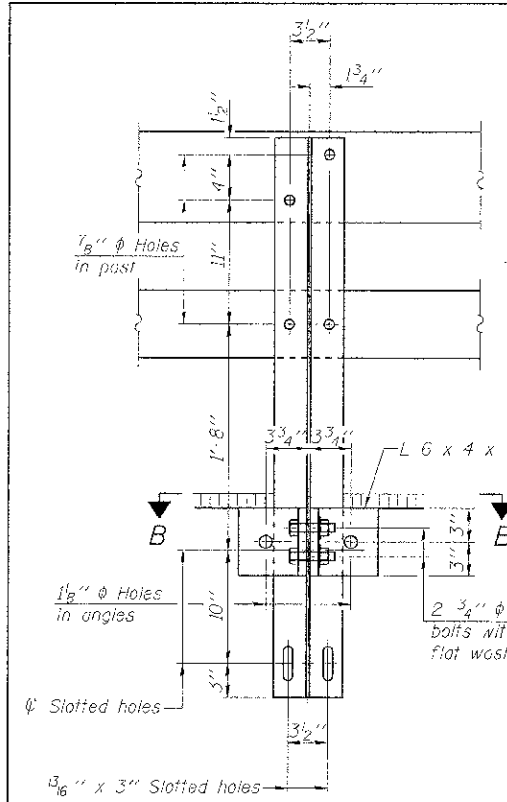
FILE NAME	USER NAME	DESIGNED AS	REVISED
		CHECKED BAB	REVISED
		DRAWN BCD	REVISED
		CHECKED BLB	REVISED

VILLAGE OF KIRKLAND
HORTENSE ST BRIDGE OVER
BULL RUN CREEK

17" x 48" PPC DECK BEAM DETAILS
STRUCTURE NO. 019-4002

SHEET NO. 4 OF 7 SHEETS

MUN. ST.	SECTION	COUNTY	TOTAL SHEETS	SHEET NO.
1090	10-00008-00-BR	DEKALB	20	13
CONTRACT NO. 87532			FED. ROAD DIST. NO. 3 ILLINOIS	



- Notes:
1. All field drilled holes shall be coated with an approved zinc rich paint before erection.
 2. All steel rail members shall be galvanized according to Article 509.05 of the Standard Specifications.
 3. The studs of the anchor devices shall be placed below the top reinforcement bars and the outermost longitudinal reinforcement bar shall be placed directly above the studs of the rail post anchor device.
 4. Ensure the fabricator prepares a sample of the indicated joint and it is macroetched to demonstrate that the required effective throat is achieved.

BILL OF MATERIAL

Item	Unit	Quantity
Steel Railing, Type SM	Foot	86

R-34HMAWS 7-1-10 (6'-3" Maximum Post Spacing) (1/4" minimum to 3/8" maximum HMA thickness)

*Threaded areas shall be plugged or blocked off during casting of beam. Galvanized after fabrication.

** Whenever the lower insert assemblies interfere with strand locations, the #3 bars shall be cut and adjusted in order to allow raising or lowering of the lower inserts. Maximum adjustment not to exceed 1/2".

COPIED BY BAYLER & WOODMAN, INC. 10/10/08
 STATE OF FLORIDA PROFESSIONAL DESIGN FIRM
 LICENSE NO. 18433-0001-0001-0001-0001
 PROJECT NO. 019-4002-0001-0001-0001-0001

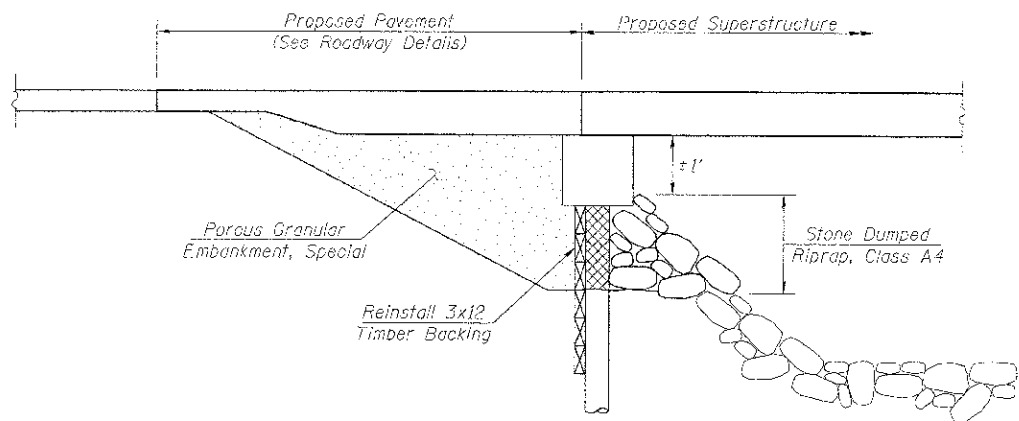
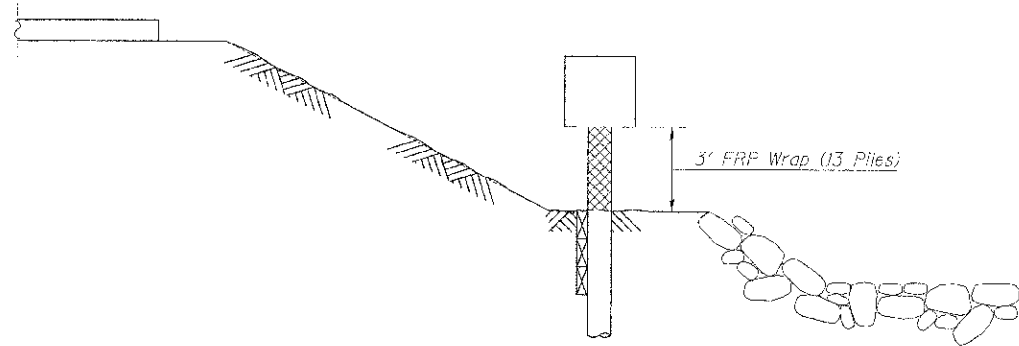
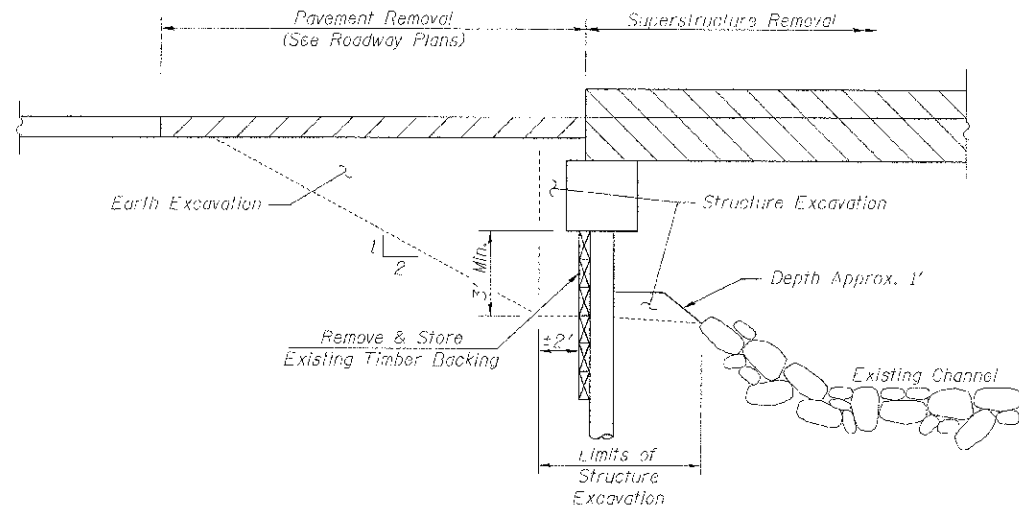
FILE NAME	USER NAME	DESIGNED	CHECKED	REVISIONS
		AS	BAB	
			BCD	
			BLB	

**VILLAGE OF KIRKLAND
HORTENSE ST BRIDGE OVER
BULL RUN CREEK**

**STEEL RAILING, TYPE SM
STRUCTURE NO. 019-4002**

MUN. ST.	SECTION	COUNTY	TOTAL SHEETS	SHEET NO.
1090	10-00008-00-BR	DEKALB	20	14

CONTRACT NO. 87532
SHEET NO. 5 OF 7 SHEETS
FFD, ROAD DIST. NO. 3 | ILLINOIS | FED. AID PROJ. RFP-0370431



SUGGESTED SEQUENCE OF CONSTRUCTION

Remove Pavement behind existing abutments and excavate to a depth of three feet below bottom of existing pile cap.

Remove exposed portions of existing timber backing and store existing planks in a safe location for re-use. The Engineer shall determine which planks are suitable for re-use and notify the Contractor of the quantity of new Treated Timber backing required. Cost of plank removal and storage included with Removal of Existing Superstructures.

Remove existing PPC Deck Beam superstructure.

Excavate in front of abutments to a depth of three feet below bottom of existing pile cap.

Install Fiber Wrap around the exposed three feet of all existing piles, except at northwest corner (13 locations total). Perform this work according to Manufacturer's recommendations and Special Provisions.

Construct Concrete Encasement around existing pile at Northwest corner as shown on Sheet 7 of 7.

Perform Structural Repair of Concrete as determined by the Engineer.

Replace timber backing in its original position according to Article 507.11 of the Standard Specifications, with original 3x12 rough-sawn planks supplemented by new Treated Timber backing as determined by the Engineer.

Apply Stone Dumped Riprap in front of existing abutments as shown. Exercise care not to damage FRP wrapped piles.

Erect new PPC Deck Beam superstructure.

Backfill behind existing abutments with Porous Granular Embankment, Special, to the lower limit of the roadway subgrade.

Construct approach pavement and complete bridge work.

NOTES

Pavement Removal and excavation behind the abutments shall be completed prior to removing the existing superstructure. No heavy equipment shall be allowed within six feet of the abutments until the new superstructure is in place.

Contractor shall exercise caution during removal operations, and when replacing timber backing and placing Riprap, to avoid damaging the existing piles or FRP wrap. Any damage deemed unacceptable by the Engineer shall be repaired at the Contractor's expense.

See Sheet 7 of 7 for Pile Encasement Details and concrete surface repair locations.

Quantity for Treated Timber is a nominal amount, provided to establish a Unit Price, and may be removed from the contract if not needed. Actual quantity to be determined by the Engineer during removal operations. Any attachment hardware required will not be paid for separately, but shall be included with the unit bid price for Treated Timber.

Application of Fiber Wrap shall include two layers of FRP, unless directed otherwise by the Engineer, or as shown in the Special Provisions.

BILL OF MATERIAL

Item	Unit	Total
Removal of Existing Superstructures	Each	1
Structure Excavation	Cu. Yd.	43
Fiber Wrap	Sq. Ft.	250
Stone Dumped Riprap, Class A4	Ton	80
Porous Granular Embankment, Special	Cu. Yd.	100
Treated Timber	F.E.M.	200

COPYRIGHT © 2002 BY BAXTER S. KODUM, INC.
 STATE OF ILLINOIS - PROFESSIONAL DESIGN FIRM
 52700
 PROJECT: VILLAGE OF KIRKLAND HORTENSE ST BRIDGE OVER BULL RUN CREEK
 SHEET NO. 6 OF 7 SHEETS
 DATE: 05/04/12

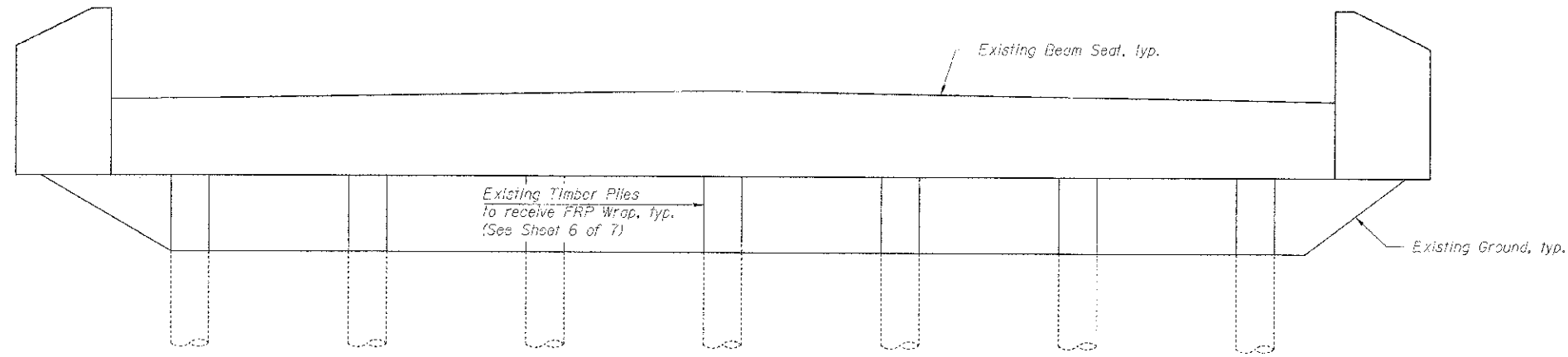
FILE NAME =	USER NAME =	DESIGNED AS	REVISED
		CHECKED BAB	REVISED
		DRAWN BCD	REVISED
		CHECKED BLB	REVISED

**VILLAGE OF KIRKLAND
HORTENSE ST BRIDGE OVER
BULL RUN CREEK**

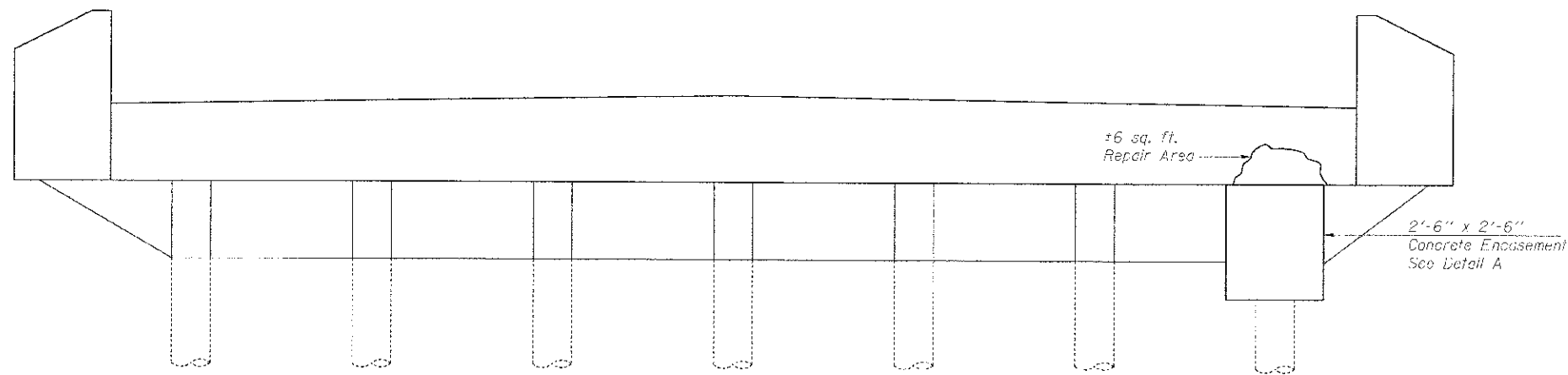
**SUBSTRUCTURE REPAIRS
STRUCTURE NO. 019-4002**

SHEET NO. 6 OF 7 SHEETS

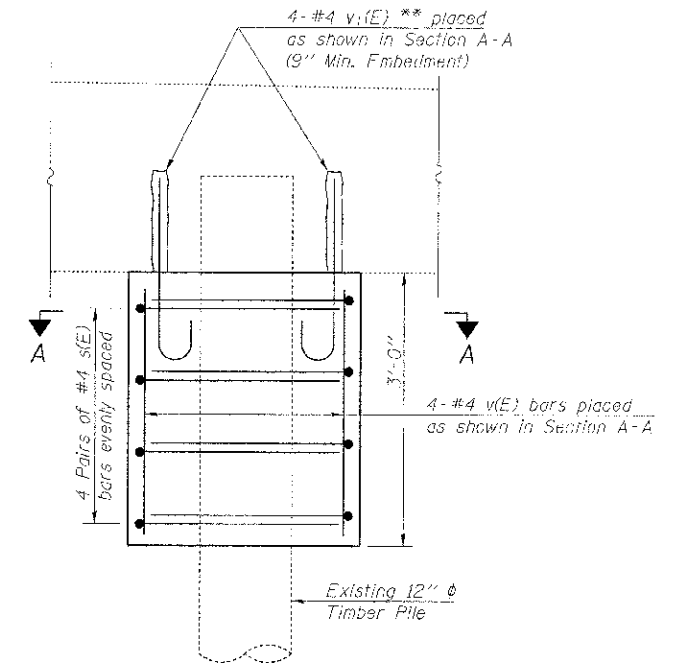
MUN. ST.	SECTION	COUNTY	TOTAL SHEETS	SHEET NO.
1090	10-00008-00-BR	DEKALB	20	15
CONTRACT NO. B7532				
FED. ROAD DIST. NO. 3 (ILLINOIS) FED. AID PROJECT RFP-037043				



EAST ABUTMENT ELEVATION

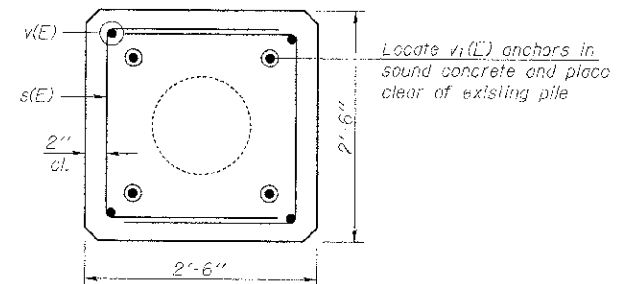
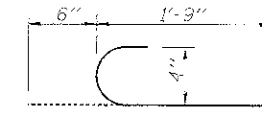
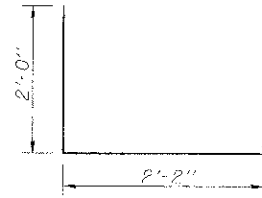


WEST ABUTMENT ELEVATION



DETAIL A

** Drill & Epoxy Grout v₁(E) according to Section 584 of the Standard Specifications. Cost included with Reinforcement Bars, Epoxy Coated.



SECTION A-A

NOTES

Quantity provided for Structural Repair of Concrete is a nominal area, intended for repairs to the abutment seat as needed, plus repair areas shown. Actual repair areas to be determined by the Engineer after superstructure removal.

Epoxy grouted v₁(E) bars shall be allowed to cure in place for at least 24 hours prior to beginning encasement work.

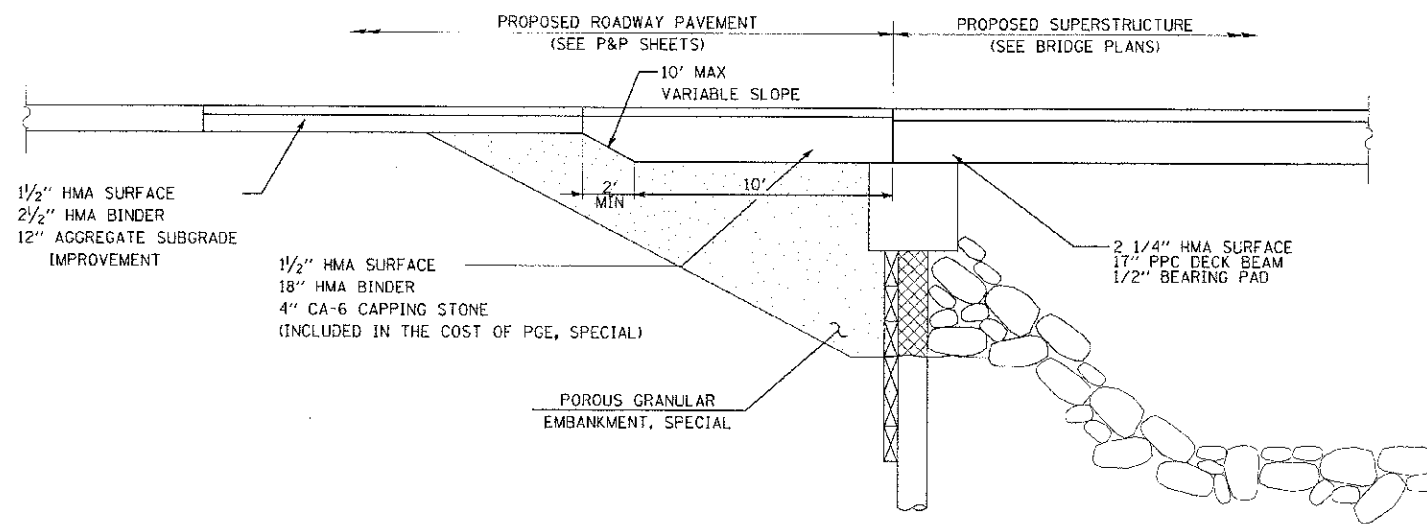
See Sheet 6 of 7 for suggested sequence of construction and additional details.

BILL OF MATERIAL

Bar	No.	Size	Length	Shape
s(E)	5	#4	6'-2"	□
v(E)	4	#4	2'-8"	—
v ₁ (E)	4	#4	2'-3"	⌒
Reinforcement Bars, Epoxy Coated			Pound	50
Concrete Encasement			Cu. Yd.	0.7
Structural Repair of Concrete (Depth Equal to or Less Than 5')			Sq. Ft.	100

COPYRIGHT © 2012 BY BAYVIEW & WOODMAN, LLC
 ALL RIGHTS RESERVED. THIS DRAWING IS THE PROPERTY OF BAYVIEW & WOODMAN, LLC.
 LICENSE NO. 04-000008-CC-BR 4/20/2013
 5/23/2012

FILE NAME #	USER NAME #	DESIGNED AS	REVISED	VILLAGE OF KIRKLAND HORTENSE ST BRIDGE OVER BULL RUN CREEK	CONCRETE REPAIR DETAILS STRUCTURE NO. 019-4002	SHEET NO. 7 OF 7 SHEETS	MUN. ST.	SECTION	COUNTY	TOTAL SHEETS	
		CHECKED BAB	REVISED				1090	10-00008-CC-BR	DEKALB	20	16
		DRAWN BCD	REVISED				CONTRACT NO. 87532				
		CHECKED BLB	REVISED				FED. ROAD DIST. NO. 3 (ILLINOIS) FED. AID PROJECT RRP-03740431				
	PLCT DATE = 05/04/12										



**HORTENSE STREET
APPROACH PAVEMENT DETAIL**

COPYRIGHT © 2012 BY BAXTER & WOODMAN, INC.
 STATE OF ILLINOIS - PROFESSIONAL DESIGN FIRM
 525 N. LAKE STREET, SUITE 200, DEERFIELD, IL 60015
 TEL: 847.434.7200 FAX: 847.434.7201
 www.baxterandwoodman.com



DESIGNED - CAC	REVISED
DRAWN - BCD	REVISED -
CHECKED - TAO	REVISED -
DATE - 05/17/12	FILE - 110638-Ce+101.dgn

**VILLAGE OF KIRKLAND
HORTENSE ST BRIDGE OVER
BULL RUN CREEK**

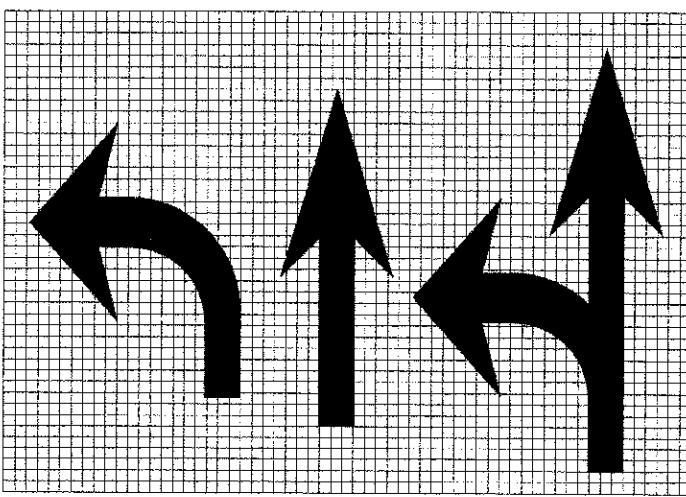
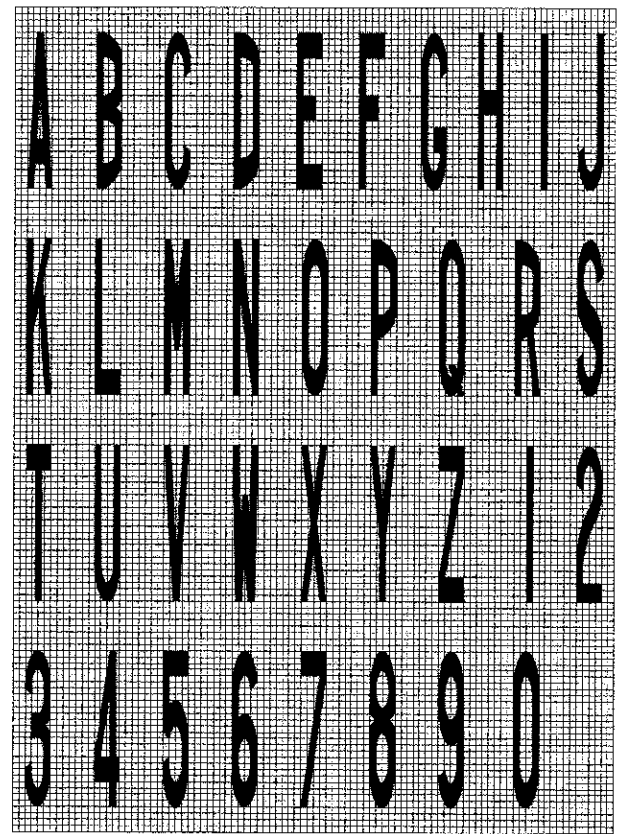
ROADWAY DETAILS

SCALE: NONE

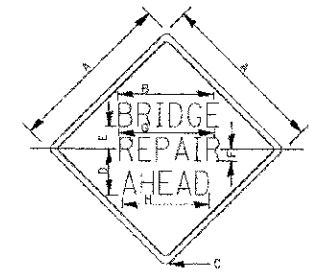
STA. TO STA.

MUN. ST.	SECTION	COUNTY	TOTAL SHEETS	SHEET NO.
1090	10-00008-00-BR	DEKALB	20	17

FED. ROAD DIST. NO. 3 ILLINOIS FED. AID PROJECT SRP-0370131



**ILLINOIS STANDARD
W21-1102**



COLOR: LEGEND AND BORDER BLACK BACKGROUND ORANGE NON-REFLECTORIZED REFLECTORIZED

SIGN SIZE	DIMENSIONS							
	A	B	C	D	E	F	G	H
36 x 36	36.0	22.3	2.25	10.8	5.6	3.0	21.9	20.7
48 x 48	48.0	26.0	3.0	14.5	7.5	3.5	25.5	24.1

SIGN SIZE	SERIES LINES			MARGIN	BORDER	BLANK STD.
	1	2	3			
	36 x 36	5C	6C			
48 x 48	7C	7C	7C	0.8	1.2	D4-48D

ALL DIMENSIONS IN INCHES.

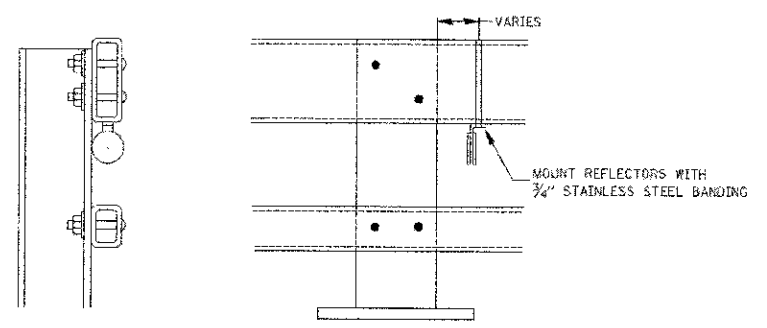
701-5

LEGEND HEIGHT	ARROW SIZE	a
6'	SMALL	2.9
8'	LARGE	3.8

THE SPACE BETWEEN ADJACENT LETTERS OR NUMERALS SHOULD BE APPROXIMATELY 3" FOR 6' LEGEND AND 4" FOR 8' LEGEND.

LETTER AND ARROW GRID SCALE

780-20



NOTES

- REFLECTORS SHALL MEET THE REQUIREMENTS OF ARTICLE 1097.03 OF THE STANDARD SPECIFICATIONS.
- FURNISHING AND INSTALLING THE COMPLETE REFLECTOR UNIT WILL BE PAID AT THE CONTRACT UNIT PRICE EACH FOR GUARD RAIL MARKERS.

**REFLECTOR MOUNTING
DETAIL FOR STEEL RAIL**

782-3

COPYRIGHT © 2012 BY BAXTER & WOODMAN, INC.
 STATE OF ILLINOIS - PROFESSIONAL DESIGN FIRM
 57100 S. WOODLAND AVE., SUITE 100, WOODDALE, IL 60591
 TEL: 708/261-1100 FAX: 708/261-1101



DESIGNED - CAC	REVISED -
DRAWN - BCD	REVISED -
CHECKED - TAO	REVISED -
DATE - 05/11/12	FILE - 110638-De+02.sh+

**VILLAGE OF KIRKLAND
HORTENSE ST BRIDGE OVER
BULL RUN CREEK**

IDOT DISTRICT 3 DETAILS

SCALE: NONE

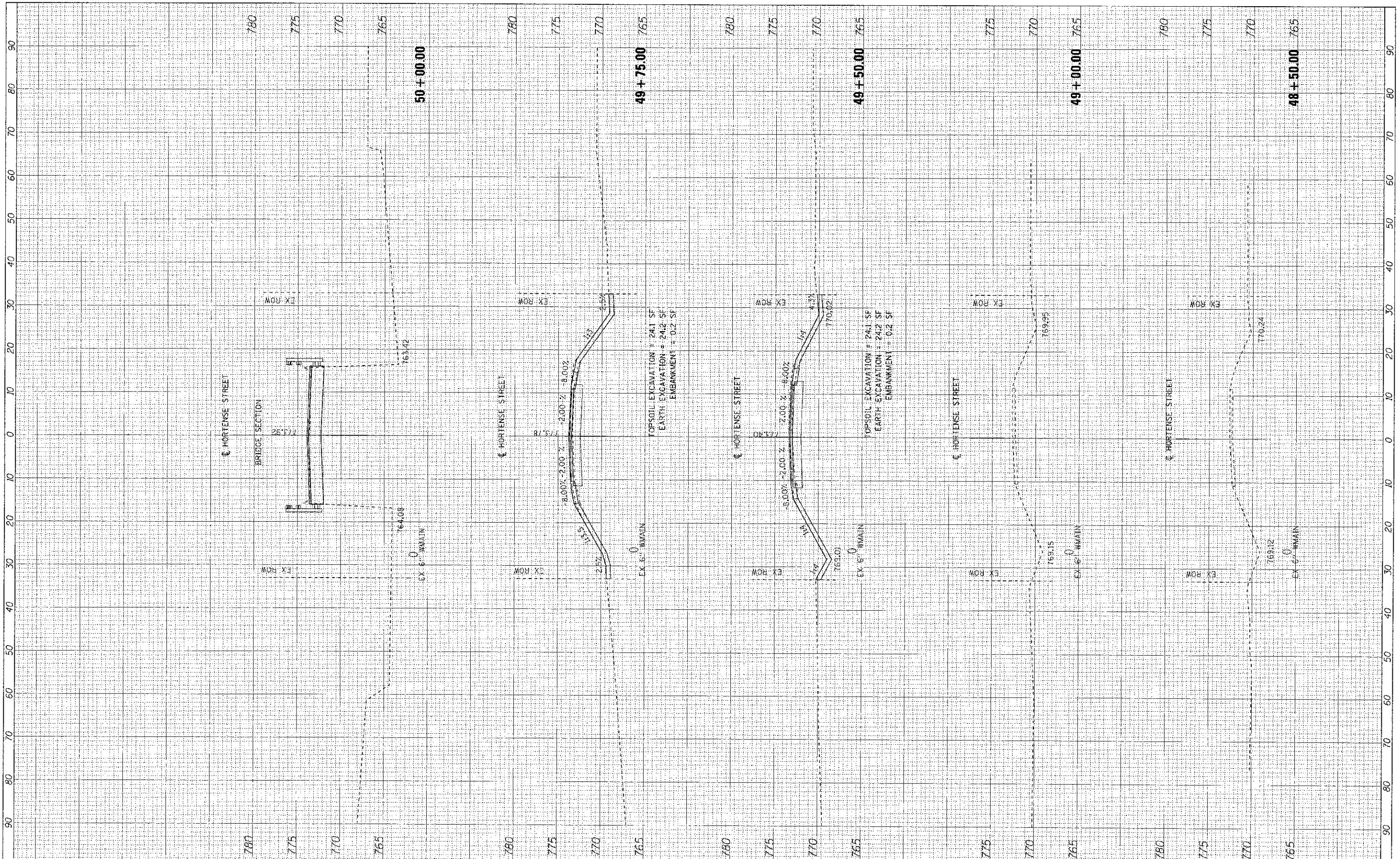
STA. TO STA.

MUN. ST.	SECTION	COUNTY	TOTAL SHEETS	SHEET NO.
1090	10-00008-00-BR	DEKALB	20	18

CONTRACT NO. 87532
FED. ROAD DIST. NO. 3 ILLINOIS FED. AID PROJECT RRP-057043

FINAL SURVEY	DATE
NOTED	BY
NO. _____	AREAS OFFENSE

DESIGNED	DATE
DRAWN	BY
CHECKED	DATE
REVISIONS	



PROJECT NAME	USER NAME	DESIGNED	REVISED
1090-00308-00-3R	1912tau	CAC	
PLANT SCALE	DRAWN	BCU	REVISED
1/8" = 1'-0"	TAO		
PLD DATE	DATE	5/17/12	REVISED

**VILLAGE OF KIRKLAND
HORTENSE ST BRIDGE OVER
BULL RUN CREEK**

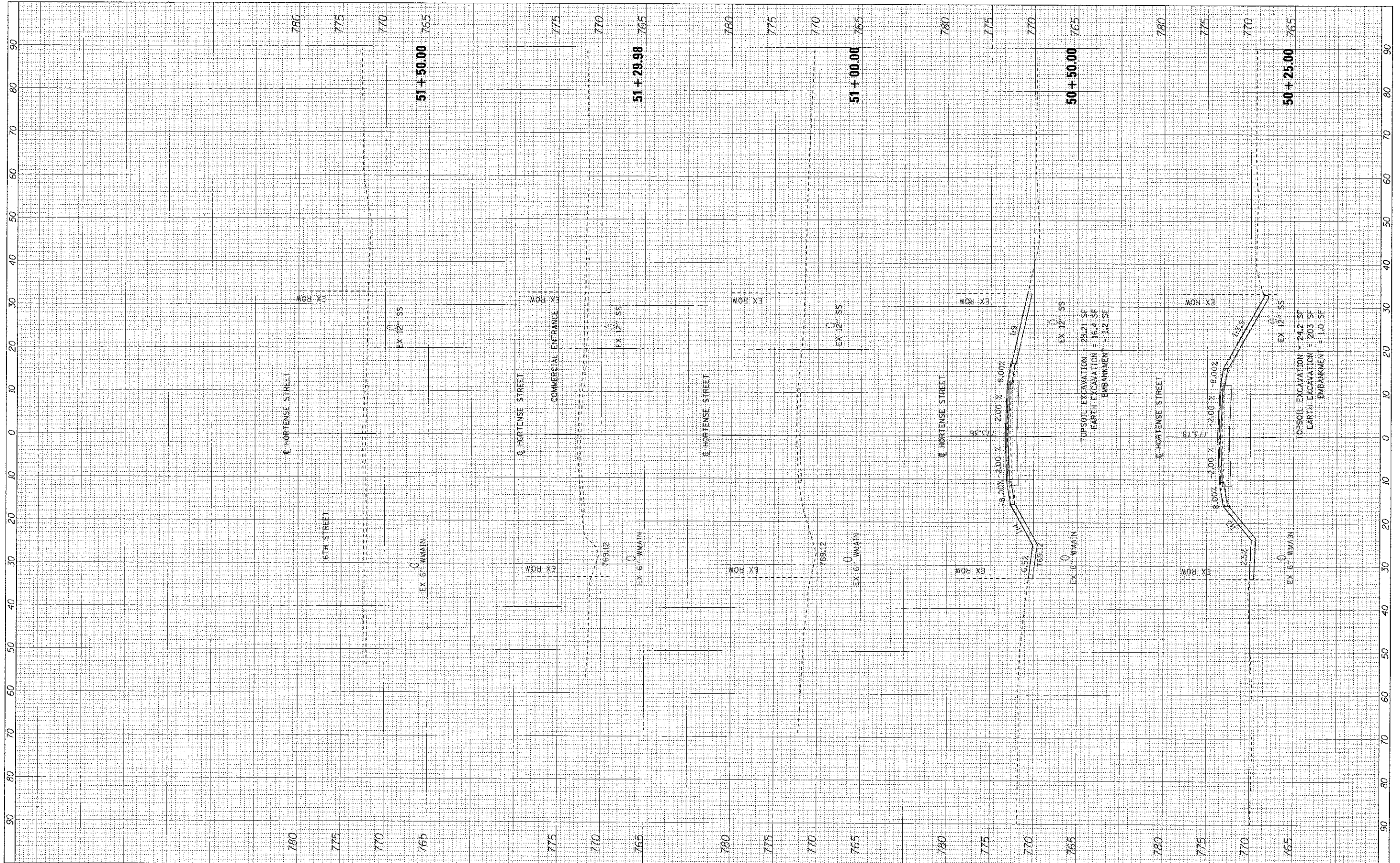
**CROSS SECTIONS
HORTENSE STREET**

SCALE: H 1"=10', V 1"=5' STA. 48+50.00 TO STA. 50+00.00

MUN. ST.	SECTION	COUNTY	TOTAL SHEETS	SHEET NO.
1090	10-00308-00-3R	DEKALB	20	19
FED. ROAD DIST NO. 3			CONTRACT NO. 87532	
ILLINOIS FED. AID PROJECT RRP-0370(43)				

FINAL	DATE
SUPPLY	BY
NOTE BOOK	NO.
AREAS	DELETED
AREAS	ORDERED

DESIGNED	DATE
DRAWN	BY
CHECKED	NO.
DATE	DELETED
	ORDERED



FILE NAME = \\corp.nakwood.com\projects\Mokona\KIRK\11263-HortenseBridge\CADD\Drawings\112630_AS.dwg
 PLOT SCALE = 1/8"=1'-0"
 PLOT DATE = 5/23/2012

USER NAME = 912 User

DESIGNED - CAC
 DRAWN - BCD
 CHECKED - TAO
 DATE - 5/17/12

REVISED -
 REVISED -
 REVISED -
 REVISED -

**VILLAGE OF KIRKLAND
 HORTENSE ST BRIDGE OVER
 BULL RUN CREEK**

**CROSS SECTIONS
 HORTENSE STREET**

SCALE: H 1"=10', V 1"=5'
 STA. 50+25.00 TO STA. 51+50.00

MUN. ST.	SECTION	COUNTY	TOTAL SHEETS	SHEET NO.
1090	IC-0008-CO-BR		20	20
CONTRACT NO. 87532				