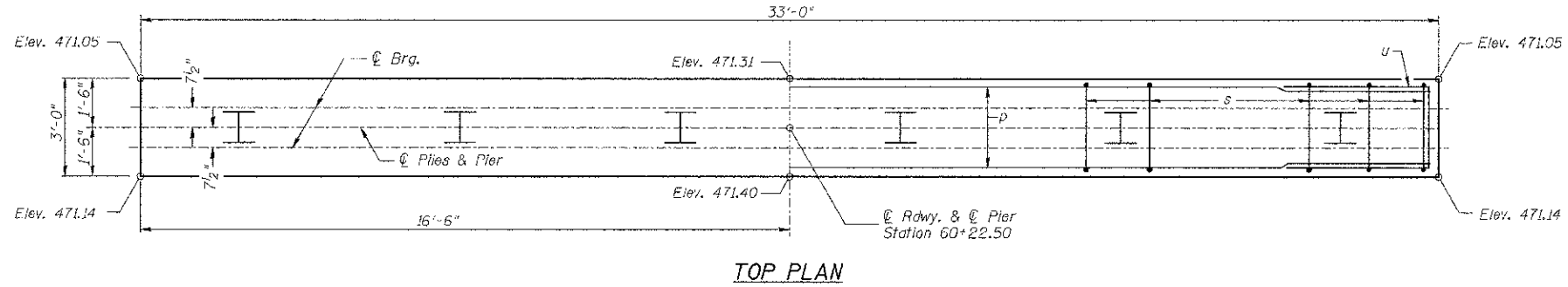
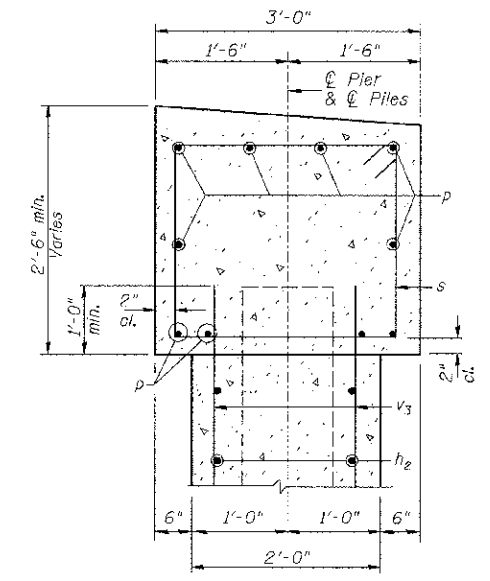


**NOTES:**

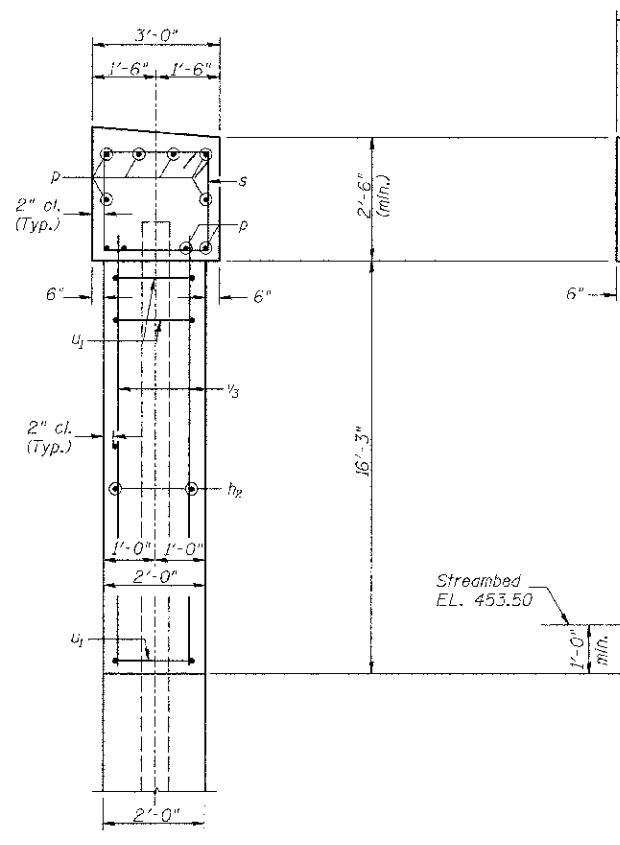
All edges shall have standard  $\frac{3}{4}$ " chamfer.  
The Pier Stem shall be constructed in a single continuous concrete pour.



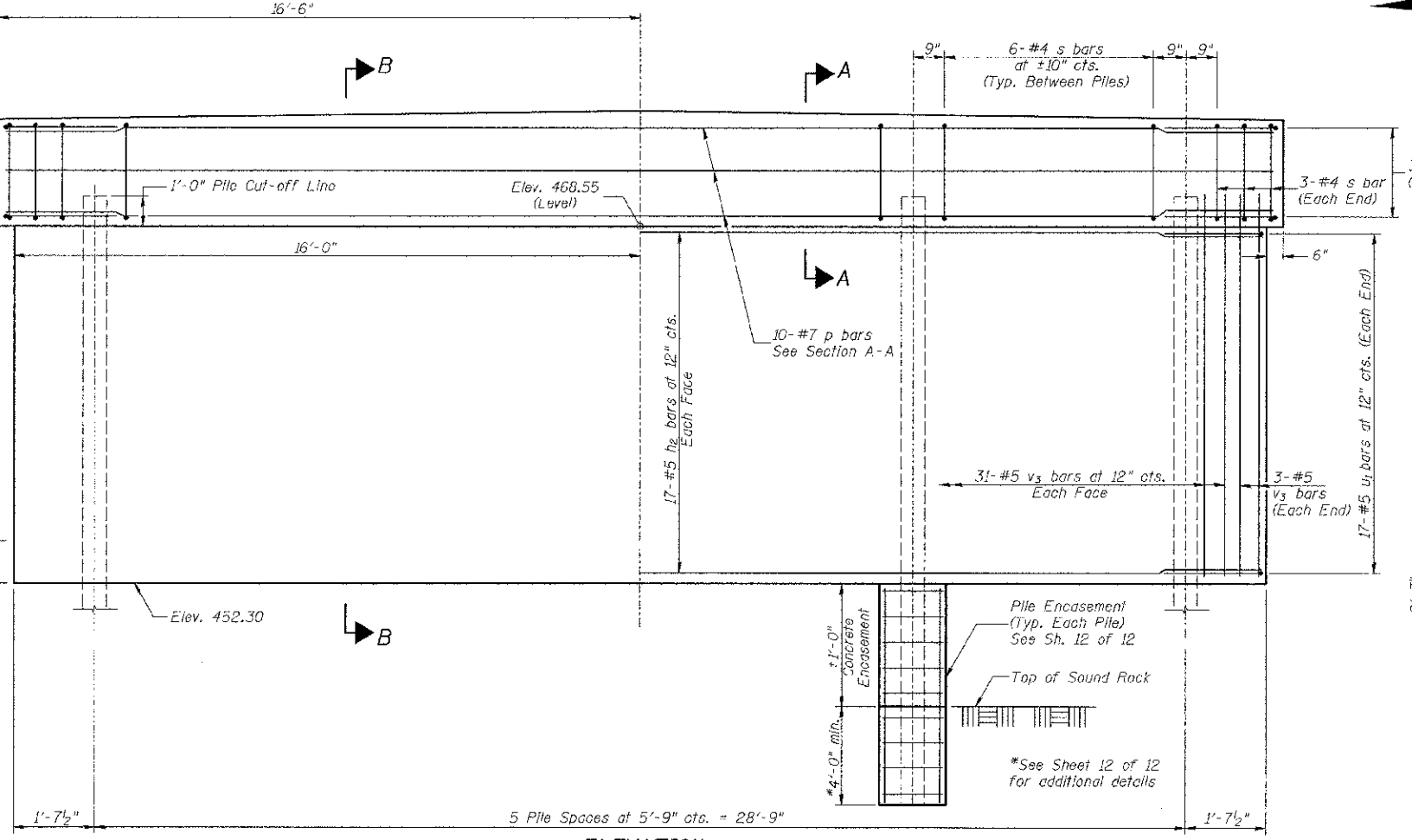
**TOP PLAN**



**SECTION A-A**



**SECTION B-B**



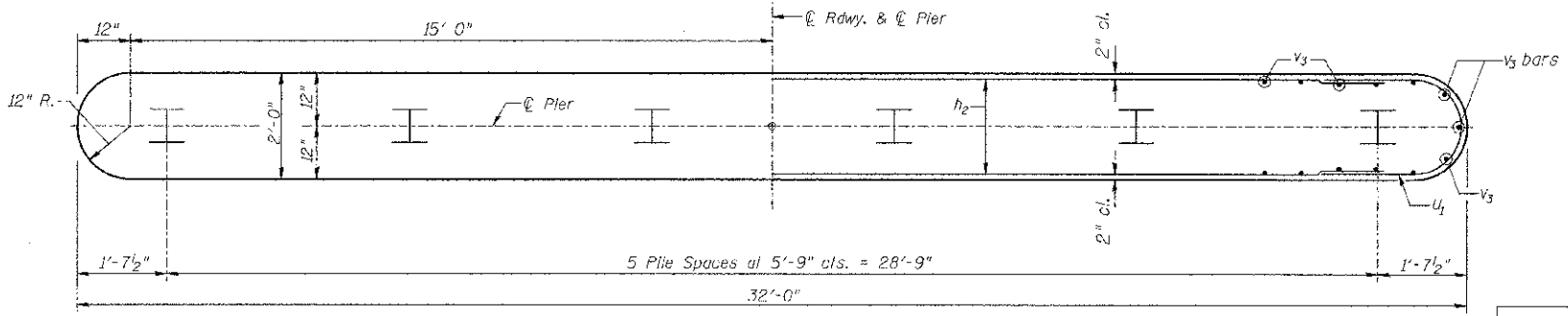
**ELEVATION**  
(Looking Upstation)

**PIER #2  
BILL OF MATERIAL**

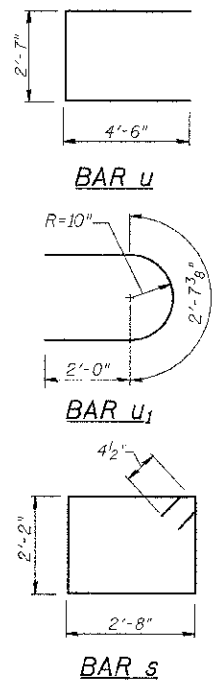
BAR	NO.	SIZE	LENGTH	SHAPE
$h_2$	34	#5	29'-8"	—
$p$	10	#7	32'-9"	—
$s$	36	#4	10'-5"	□
$u$	6	#6	11'-7"	□
$u_1$	34	#5	6'-8"	□
$v_3$	68	#5	17'-1"	—
Concrete Structures		CU YD	47.8	
Reinforcement Bars		POUND	3,520	
Cofferdam Excavation		CU YD	25	
Furnishing Steel Piles HP10x42		FOOT	138	
Setting Piles in Rock		EACH	6	
Concrete Encasement		CU YD	0.7	
Cofferdam (Type II) (Location-2)		EACH	1	

① See Special Provisions

**PILE DATA**  
Type & Size: Steel HP10x42  
Nominal Required Bearing: Set in Rock (335 kips)  
Factored Resistance Available: Set in Rock (184 kips)  
Est. Length: 23'  
No. Req'd.: 6



**FOOTING PLAN**



**PIER #2  
PIKE COUNTY  
SECTION 10-00085-00-BR  
C.H. 10 OVER BAY CREEK TRIBUTARY**

SHEET NO. 11 12 SHEETS	ROUTE NO.	SECTION	COUNTY	TOTAL SHEETS	SHEET NO.
	CH 10	10-00085-00-BR	PIKE	23	17
S.N. 075-3323			CONTRACT NO. 93582		
FED. ROAD DIST. NO. 7 ILLINOIS			FED. AID PROJECT BRS-0603(115)		