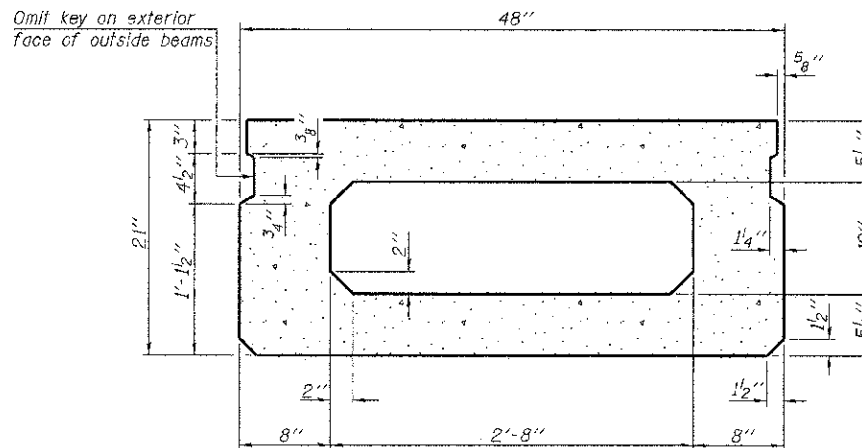
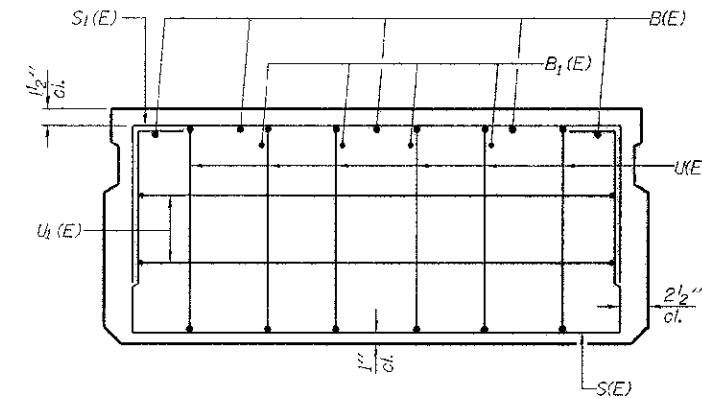


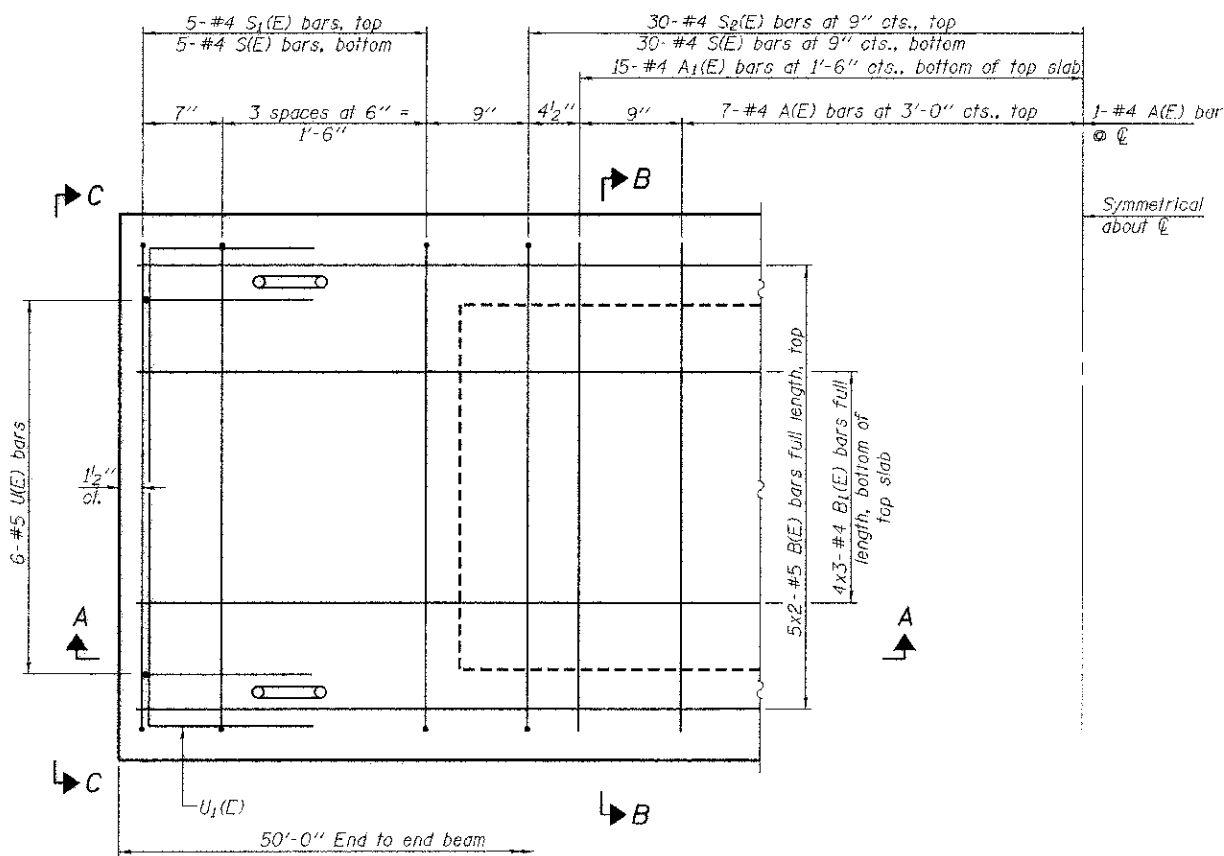
SECTION A-A



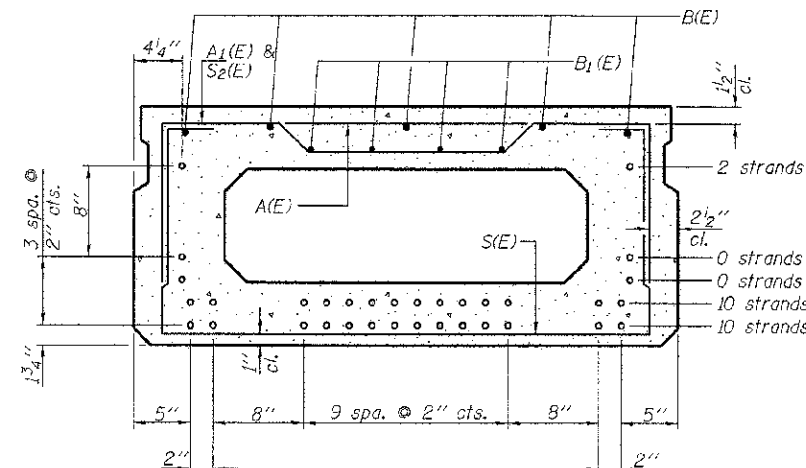
SECTION B-B
(Showing dimensions)



VIEW C-C



PLAN VIEW



SECTION B-B

(Showing reinforcement and permissible strand locations)

Note: Place the number of strands specified in each row symmetrically about the centerline of beam in the permissible strand locations shown.

BAR LIST
ONE BEAM ONLY
(For Information Only)

Bar	No.	Size	Length	Shape
A(E)	15	#4	3'-7"	—
A1(E)	30	#4	3'-10"	—
B(E)	10	#5	26'-2"	—
B1(E)	12	#4	17'-11"	—
S1(E)	70	#4	7'-5"	□
S2(E)	10	#4	5'-11"	□
S2(E)	60	#4	6'-2"	□
U1(E)	12	#5	4'-0"	□
U1(E)	4	#4	6'-0"	□

Note: See sheets 3 & 4 of 9 for additional details and Bill of Material.

Note:
Spacing of S1(E) and S2(E) bars may be adjusted up to 4" in the immediate area of the transverse tie diaphragms to miss the block outs for the transverse ties.
Bars indicated thus 5x2-#5 etc. indicates 5 lines of bars with 2 lengths per line.

MINIMUM BAR LAP

#4 bar = 2'-0"
#5 bar = 2'-6"

PD-2148-0

7-1-10

FILE NAME = 110293-ahb-bridge.dgn	USER NAME =	DESIGNED - D.W.T.	REVISED -
HAMPTON, LENZINI AND BERNICK, INC. 3001 REVOLUTION DRIVE, SUITE 101 SPRINGFIELD, ILLINOIS 62783		CHECKED - A.S.L.	REVISED -
ILLINOIS PROFESSIONAL DESIGN FIRM 16-1 PLS. SEE CODE 104-010000	PLOT SCALE =	DRAWN - D.A.B.	REVISED -
	PLOT DATE = 4/4/2012	CHECKED - S.W.M.	REVISED -

STATE OF ILLINOIS
JASPER COUNTY HIGHWAY DEPARTMENT

21" x 48" PPC DECK BEAM
STRUCTURE NO. 040-3264

C.H.	SECTION	COUNTY	TOTAL SHEETS	SHEET NO.
14	11-00118-00-BR	JASPER	12	5
				CONTRACT NO. 95685
ILLINOIS FED. AID PROJECT				

SHEET NO. 2 OF 9 SHEETS