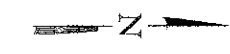
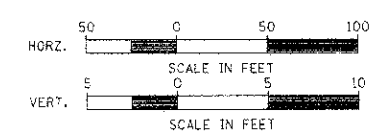


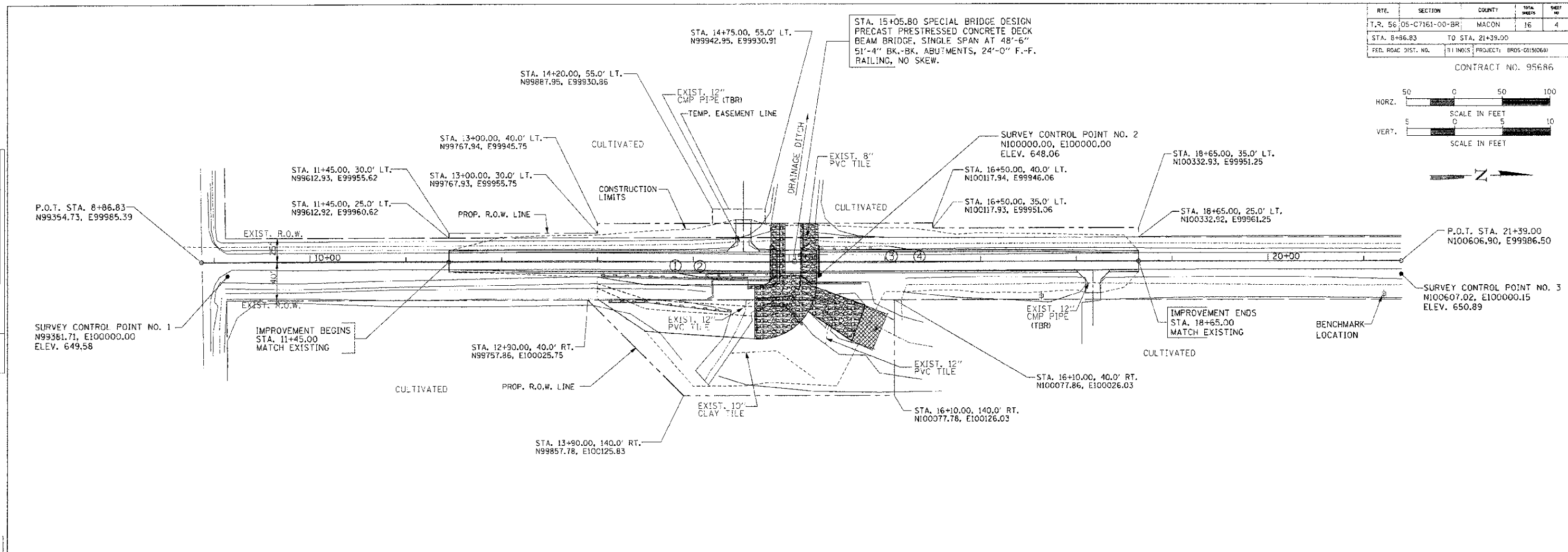
RTE.	SECTION	COUNTY	TOTAL SHEETS	SHEET NO.
T. 2. 56	05-C7161-00-BR	MACON	16	4
STA. 8+96.83 TO STA. 21+39.00				
FED. ROAD DIST. NO.	PROJECT NO.	PROJECT: BR05-01510681		

CONTRACT NO. 95686



DATE	BY
DATE	BY
DATE	BY
DATE	BY
DATE	BY

DATE	BY
DATE	BY
DATE	BY
DATE	BY
DATE	BY



SHOULDER WIDENING FOR GUARDRAIL TERMINALS

- ① STA. 13+83.71, 12' RT.
- ② STA. 14+07.71, 16' RT.
- ③ STA. 16+03.88, 16' LT.
- ④ STA. 16+27.88, 12' LT.

PROPOSED STRUCTURE LAYOUT

<u>SOUTH ABUTMENT</u>	<u>NORTH ABUTMENT</u>
BK. OF S. ABUT. STA. 14+80.13 N99948.03, E99985.91	BK. OF N. ABUT. STA. 15+31.46 N99999.36, E99985.96
☉ S. ABUT. STA. 14+81.38 N99949.28, E99985.92	☉ N. ABUT. STA. 15+30.21 N99998.11, E99985.96

HORIZONTAL LAYOUT