

GENERAL NOTES:

SEE SHEET 4 FOR SCHEDULE OF STORM SEWER STRUCTURES AND FOR SCHEDULE OF STORM SEWER.

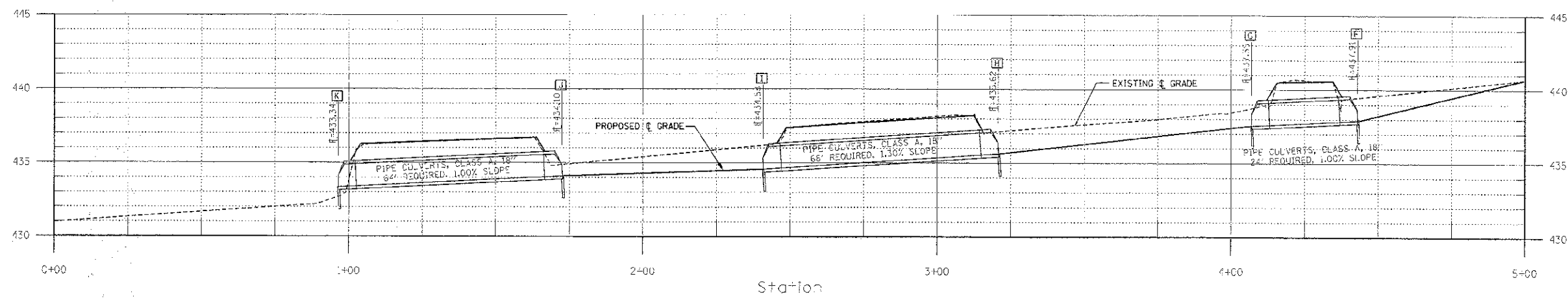
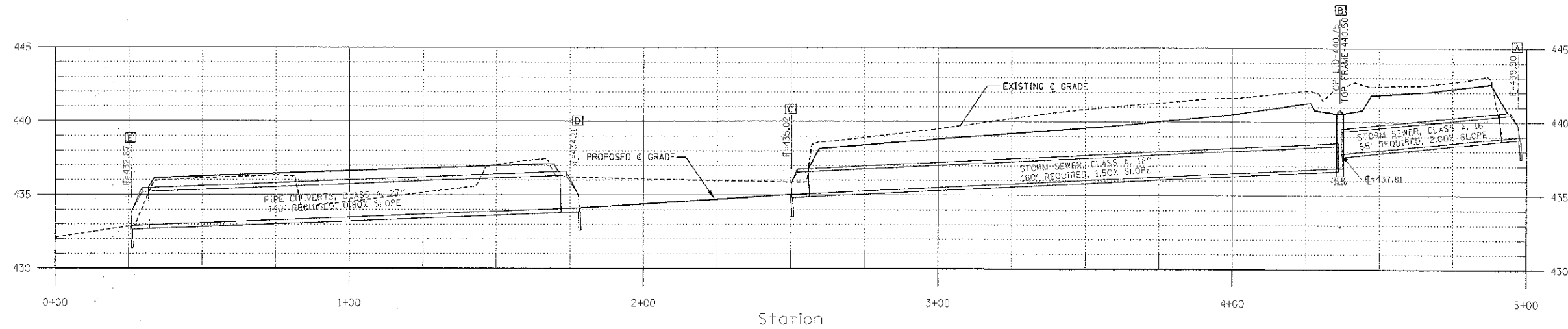
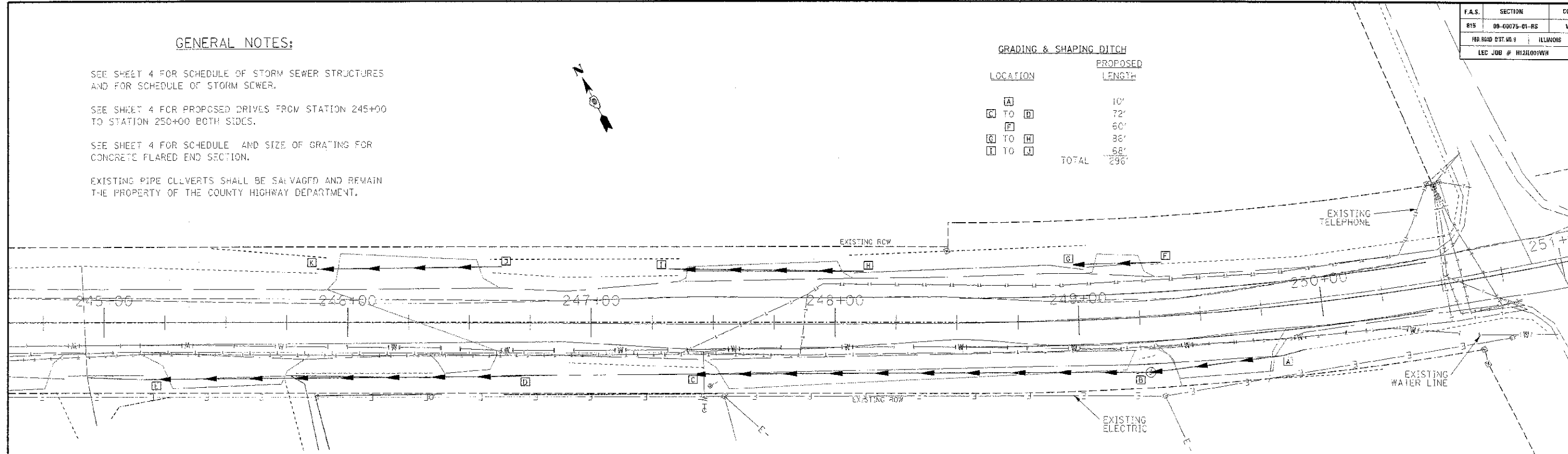
SEE SHEET 4 FOR PROPOSED DRIVES FROM STATION 245+00 TO STATION 250+00 BOTH SIDES.

SEE SHEET 4 FOR SCHEDULE AND SIZE OF GRADING FOR CONCRETE FLARED END SECTION.

EXISTING PIPE CULVERTS SHALL BE SALVAGED AND REMAIN THE PROPERTY OF THE COUNTY HIGHWAY DEPARTMENT.

GRADING & SHAPING DITCH

LOCATION	PROPOSED LENGTH
A	10'
C TO D	72'
F	60'
G TO H	36'
I TO J	68'
TOTAL	296'



F.A.S.	SECTION	COUNTY	TOTAL SHEETS	SHEET NO.
815	09-0075-01-RS	WHITE	8	8

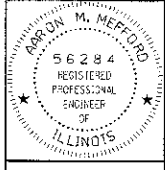
RD ROAD DIST. NO. 9 ILLINOIS BURNT PRAIRIE ROAD
 LEC JOB # H12H001WH CONTRACT # 95478

323 W. BRD. ST.
 P.O. BOX 130
 MT. CARMEL, IL
 62803
 PHONE:
 (618) 262-8051
 FAX:
 (618) 263-3327

405 W. STATE ST.
 SUITE 1
 PRINCETON, IN
 47670
 PHONE:
 (812) 386-7611
 FAX:
 (812) 385-2612



PROFESSIONAL DESIGN FIRM
 LAND SURVEY & PROFESSIONAL ENGINEERING CORPORATION
 184-00087
 (82-032435)(25-002763)



AARON M. MEFFORD
 NAME
 Signature
 SIGNATURE
 5-23-12
 DATE
 11-30-13
 EXPIRES