

CONSTRUCTION PLANS FOR CASEY MUNICIPAL AIRPORT

CASEY, CLARK COUNTY, ILLINOIS

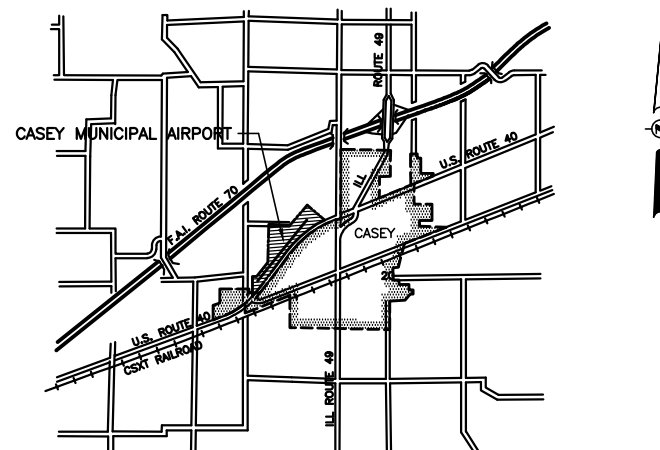
REHABILITATE EAST SIDE OF APRON AND THE T-HANGAR PAVEMENT

SUMMARY OF QUANTITIES				
ITEM NO.	DESCRIPTION	UNIT	AS BID QUANTITY	AS BUILT QUANTITY
AR201660	BITUMINOUS CRACK REPAIR	LIN. FT.	1,600	
AR209510	CRUSHED AGGREGATE BASE COURSE	TON	155	
AR209650	AGGREGATE BASE PREPARATION	SQ. YD.	1,051	
AR401613	BIT. SURF. CSE.-METHOD I, SUPERPAVE	TON	1,096	
AR401650	BITUMINOUS PAVEMENT MILLING	SQ. YD.	4,488	
AR401901	REMOVE BITUMINOUS SURFACE COURSE	SQ. YD.	1,051	
AR602510	BITUMINOUS PRIME COAT	GAL.	368	
AR603510	BITUMINOUS TACK COAT	GAL.	615	
AR620520	PAVEMENT MARKING-WATERBORNE	SQ. FT.	254	

ILLINOIS PROJECT NO. 1H8-4137
AIP PROJECT NO. 3-17-0014-B10

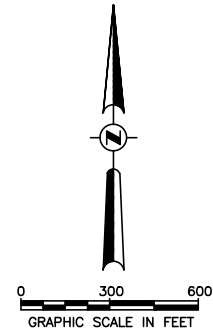
JUNE 29, 2012

INDEX OF SHEETS	
NO.	DESCRIPTION
1	COVER SHEET
2	IMPROVEMENT AND SAFETY PLAN
3	TYPICAL SECTIONS
4	APRON PAVEMENT LAYOUT AND ELEVATIONS
5	T-HANGAR ACCESS PAVEMENT LAYOUT AND ELEVATIONS





VICINITY MAP

	PLANS PREPARED BY :	CITY OF CASEY, ILLINOIS
	HUTCHISON ENGINEERING, INC. JACKSONVILLE, ILLINOIS	APPROVED <i>[Signature]</i> MAYOR
EXPIRES 11/30/13 ENGINEER'S SEAL	SUBMITTED <i>[Signature]</i>	DATE <i>May 30, 2012</i>
	DATE <i>5/15/12</i>	APPROVED <i>[Signature]</i> CITY CLERK
		DATE <i>May 30, 2012</i>



LEGEND

-  PAVEMENT REHABILITATION
-  LOCATION OF LIGHTED BARRICADES @15'± CTRS. TO CLOSE A PAVEMENT TO AIRCRAFT

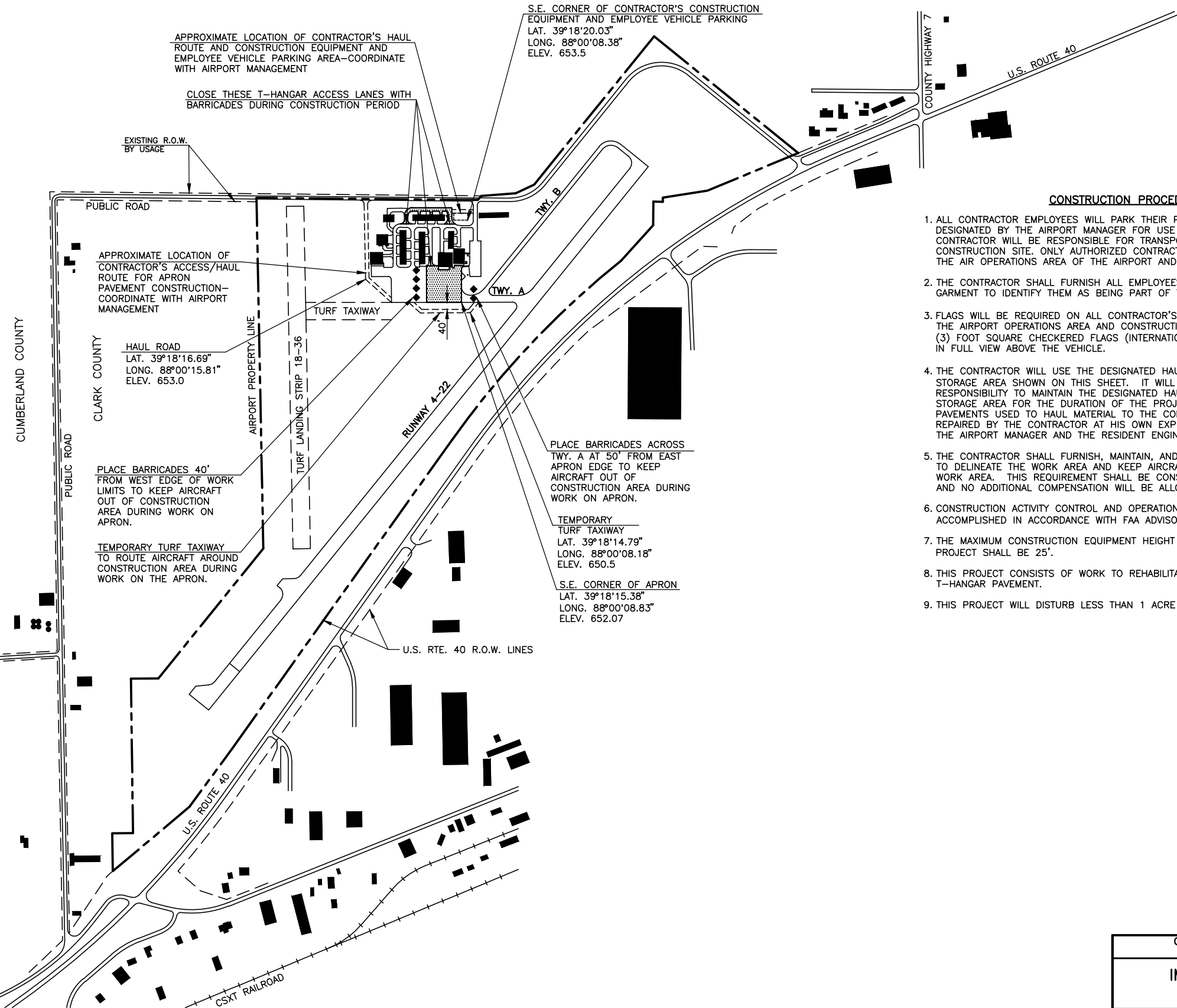
GENERAL NOTES

1. THE CONTRACTOR SHALL BE RESPONSIBLE FOR PROTECTING UTILITY PROPERTY FROM CONSTRUCTION OPERATIONS. PRIOR TO STARTING WORK, THE CONTRACTOR SHALL CONTACT J.U.L.I.E. (JOINT UTILITY LOCATING INFORMATION FOR EXCAVATORS) PHONE 1-800-892-0123 TO ARRANGE FOR LOCATION OF UTILITIES IN THE WORK AREA. A MINIMUM OF FORTY-EIGHT HOURS ADVANCE NOTICE IS REQUIRED FOR NON-EMERGENCY WORK.

COUNTY - CLARK
 CITY - CASEY
 TOWNSHIP - T. 10 N., R. 14 W. 2nd P.M. (CASEY)
 SECTION NO. - 19

2. AVAILABLE RECORDS INDICATE THAT THE FOLLOWING UTILITIES ARE LOCATED WITHIN THE GENERAL AREA OF THIS IMPROVEMENT :

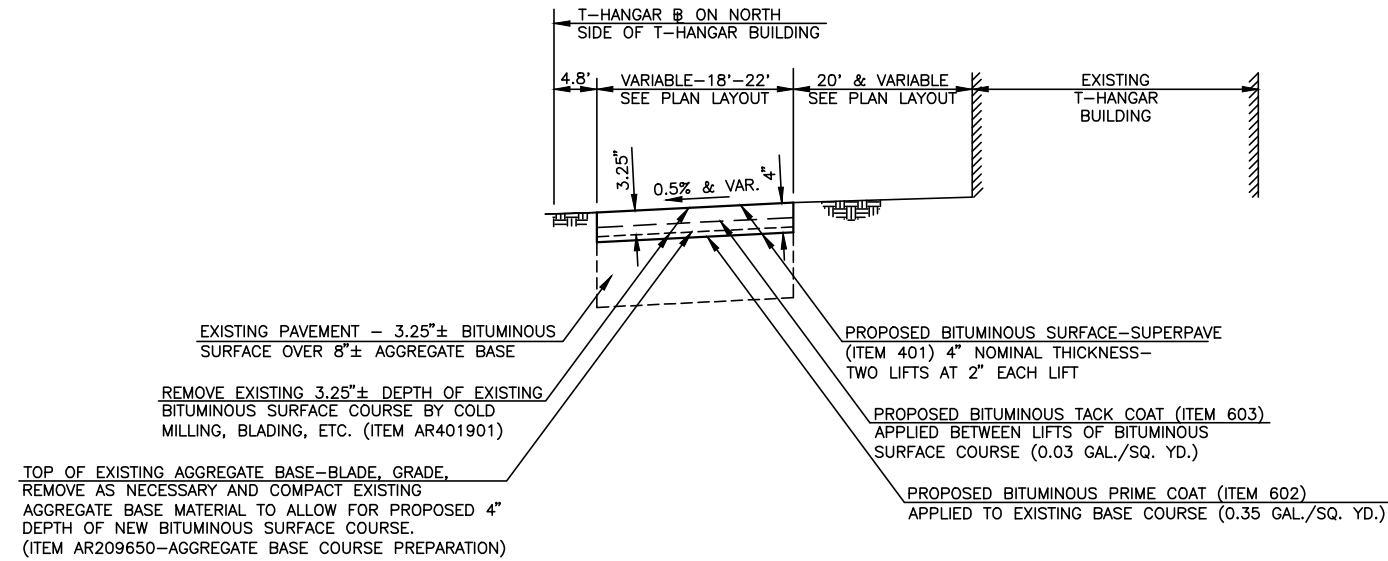
TELEPHONE : ALLTEL ILLINOIS, INC.
 WATER : CITY OF CASEY, ILLINOIS - UTILITIES DEPARTMENT
 ELECTRICAL : CITY OF CASEY, ILLINOIS - UTILITIES DEPARTMENT



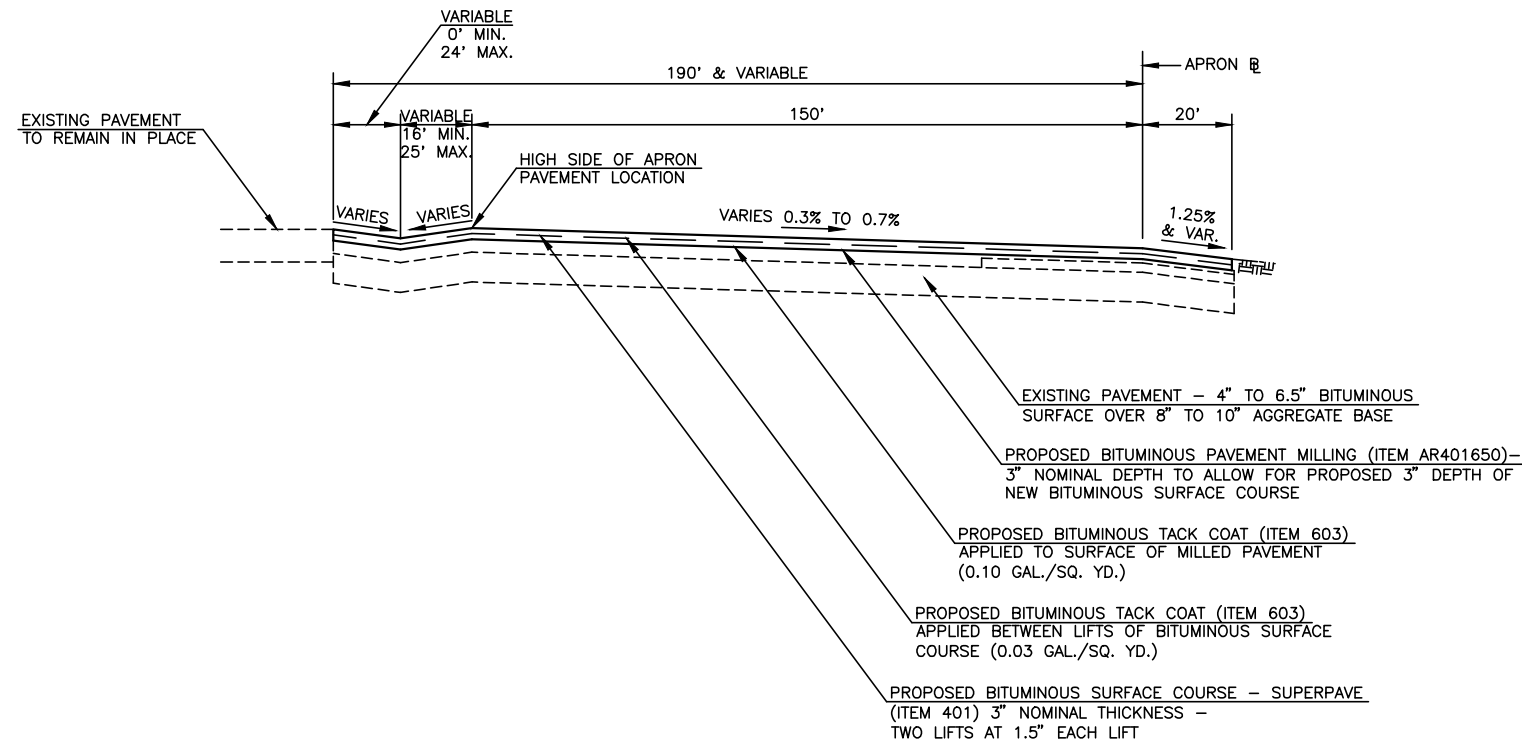
CONSTRUCTION PROCEDURE NOTES

1. ALL CONTRACTOR EMPLOYEES WILL PARK THEIR PERSONAL VEHICLES IN THE AREA DESIGNATED BY THE AIRPORT MANAGER FOR USE AS A VEHICLE PARKING AREA. THE CONTRACTOR WILL BE RESPONSIBLE FOR TRANSPORTING EMPLOYEES TO THE PROPOSED CONSTRUCTION SITE. ONLY AUTHORIZED CONTRACTOR VEHICLES WILL BE ALLOWED ON THE AIR OPERATIONS AREA OF THE AIRPORT AND ON THE CONSTRUCTION SITE.
2. THE CONTRACTOR SHALL FURNISH ALL EMPLOYEES WITH SOME TYPE OF TAG OR GARMENT TO IDENTIFY THEM AS BEING PART OF THE CONSTRUCTION CREW.
3. FLAGS WILL BE REQUIRED ON ALL CONTRACTOR'S VEHICLES AND EQUIPMENT USED ON THE AIRPORT OPERATIONS AREA AND CONSTRUCTION SITE. THE FLAGS SHALL BE THREE (3) FOOT SQUARE CHECKERED FLAGS (INTERNATIONAL ORANGE AND WHITE) DISPLAYED IN FULL VIEW ABOVE THE VEHICLE.
4. THE CONTRACTOR WILL USE THE DESIGNATED HAUL ROUTE AND EQUIPMENT STORAGE AREA SHOWN ON THIS SHEET. IT WILL BE THE CONTRACTOR'S RESPONSIBILITY TO MAINTAIN THE DESIGNATED HAUL ROUTE AND EQUIPMENT STORAGE AREA FOR THE DURATION OF THE PROJECT. ANY DAMAGE TO EXISTING PAVEMENTS USED TO HAUL MATERIAL TO THE CONSTRUCTION SITE WILL BE REPAIRED BY THE CONTRACTOR AT HIS OWN EXPENSE TO THE SATISFACTION OF THE AIRPORT MANAGER AND THE RESIDENT ENGINEER.
5. THE CONTRACTOR SHALL FURNISH, MAINTAIN, AND REMOVE ALL BARRICADES REQUIRED TO DELINEATE THE WORK AREA AND KEEP AIRCRAFT FROM ENCRANCHING INTO SAID WORK AREA. THIS REQUIREMENT SHALL BE CONSIDERED INCIDENTAL TO THE CONTRACT AND NO ADDITIONAL COMPENSATION WILL BE ALLOWED.
6. CONSTRUCTION ACTIVITY CONTROL AND OPERATION AREA PROTECTION SHALL BE ACCOMPLISHED IN ACCORDANCE WITH FAA ADVISORY CIRCULAR NO. 150/5370-2F.
7. THE MAXIMUM CONSTRUCTION EQUIPMENT HEIGHT UTILIZED ON THE AIRPORT FOR THIS PROJECT SHALL BE 25'.
8. THIS PROJECT CONSISTS OF WORK TO REHABILITATE EAST SIDE OF APRON AND THE T-HANGAR PAVEMENT.
9. THIS PROJECT WILL DISTURB LESS THAN 1 ACRE OF LAND.

CASEY MUNICIPAL AIRPORT CASEY, ILLINOIS	
IMPROVEMENT AND SAFETY PLAN	
HUTCHISON ENGINEERING, INC. JACKSONVILLE, ILLINOIS	
DRAWN BY: R.L.R. DATE: MAY, 2012	ILL. PROJ. NO. 1H8-4137 AIP PROJ. NO. 3-17-0014-810



TYPICAL SECTION
T-HANGAR ACCESS PAVEMENT
NOT TO SCALE

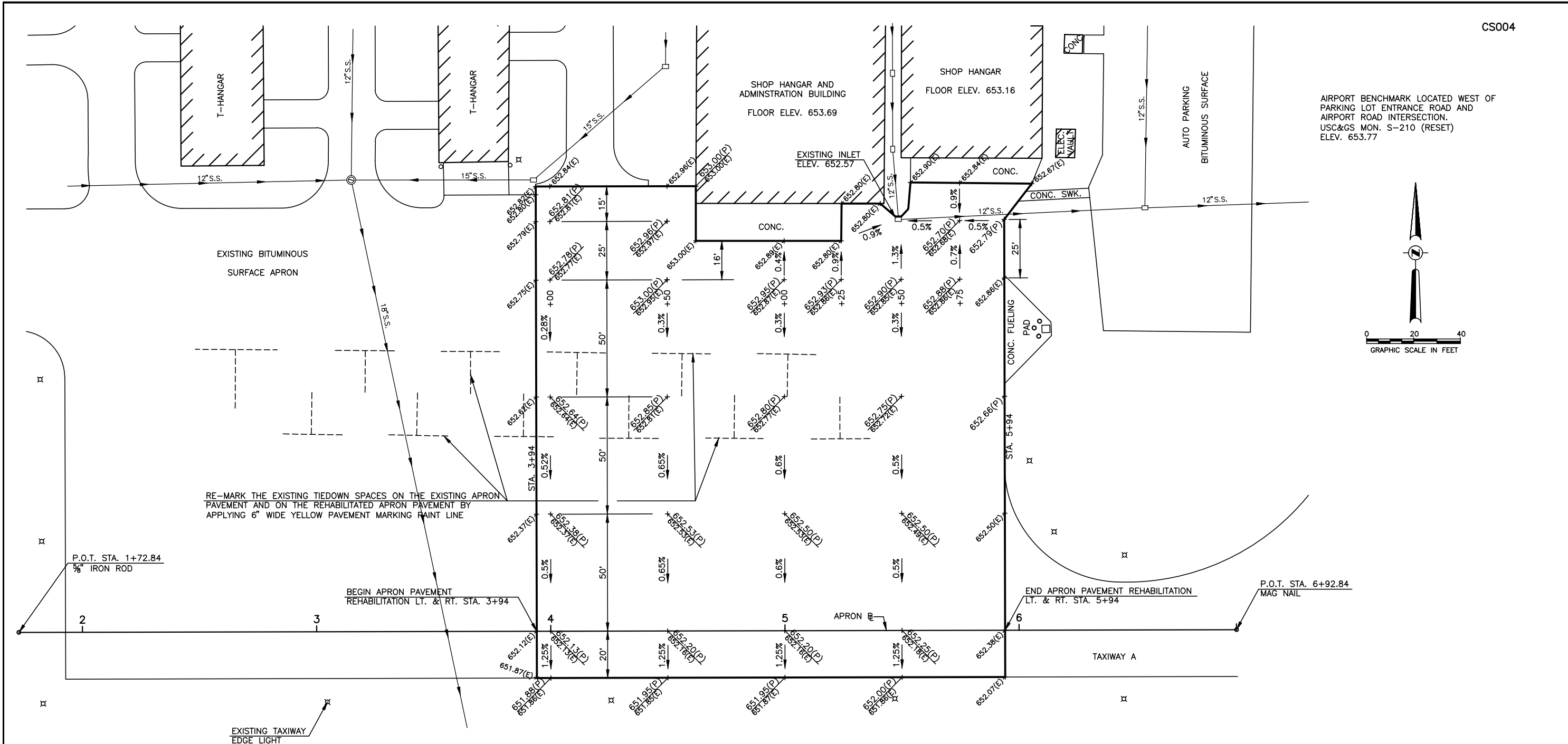


TYPICAL SECTION
APRON AREA
NOT TO SCALE

GENERAL NOTES

1. AFTER THE PROPOSED BITUMINOUS PAVEMENT MILLING ON THE APRON PAVEMENT HAS BEEN COMPLETED, THE RESIDENT ENGINEER SHALL INSPECT THE PAVEMENT AND MARK THE CRACKS REQUIRED TO BE FILLED BY THE CONTRACTOR IN ACCORDANCE WITH THE SPECIAL PROVISIONS FOR ITEM AR201660 BITUMINOUS CRACK REPAIR. THE QUANTITIES FOR THIS WORK SHOWN IN THESE PLANS ARE ESTIMATED AND MAY BE INCREASED OR REDUCED AT THE TIME OF CONSTRUCTION BASED UPON RESULTS OF THE FIELD INSPECTION OF THE PAVEMENT AFTER THE SURFACE HAS BEEN MILLED, IN ACCORDANCE WITH THE SPECIAL PROVISIONS.
2. AT LOCATIONS WHERE THE EXISTING TURF IS DISTURBED BY THE CONTRACTOR ADJACENT TO THE EDGE OF THE NEW BITUMINOUS SURFACE OR THE EDGE DROP EXCEEDS 1 1/2", THE SHOULDER SHALL BE ADJUSTED AND/OR REGRADED IN NO MORE THAN 3 FEET FROM THE PAVEMENT EDGE USING SOIL THAT IS OBTAINED OFF SITE THAT IS FREE OF HEAVY SOD, DECAYED VEGETATIVE MATTER, RUBBISH AND OTHER UNSUITABLE MATERIAL. THE ADJUSTED AREAS SHALL BE FERTILIZED AND SEEDDED. ANY SHOULDER ADJUSTMENT, FERTILIZING AND SEEDING REQUIRED SHALL BE ACCOMPLISHED BY THE CONTRACTOR AND SHALL BE CONSIDERED INCIDENTAL TO THE CONTRACT.
3. ALL AREAS DISTURBED BY THE CONTRACTOR OUTSIDE THE SURFACING AREAS FOR THIS PROJECT, INCLUDING THE CONTRACTOR'S PARKING AREA AND HAUL ROUTES SHALL BE REGRADED AND RESEEDED AND/OR RESTORED TO THEIR ORIGINAL CONDITION. THIS RESTORATION SHALL ACCOMPLISHED BY THE CONTRACTOR AT HIS OWN EXPENSE UPON COMPLETION OF THIS IMPROVEMENT PROJECT.

CASEY MUNICIPAL AIRPORT CASEY, ILLINOIS	
TYPICAL SECTIONS	
HUTCHISON ENGINEERING, INC. JACKSONVILLE, ILLINOIS	
DRAWN BY: R.L.R. DATE: MAY, 2012	ILL. PROJ. NO. 1H8-4137 AIP PROJ. NO. 3-17-0014-B10



RE-MARK THE EXISTING TIEDOWN SPACES ON THE EXISTING APRON PAVEMENT AND ON THE REHABILITATED APRON PAVEMENT BY APPLYING 6" WIDE YELLOW PAVEMENT MARKING PAINT LINE

P.O.T. STA. 1+72.84
3/8" IRON ROD

BEGIN APRON PAVEMENT REHABILITATION LT. & RT. STA. 3+94

END APRON PAVEMENT REHABILITATION LT. & RT. STA. 5+94

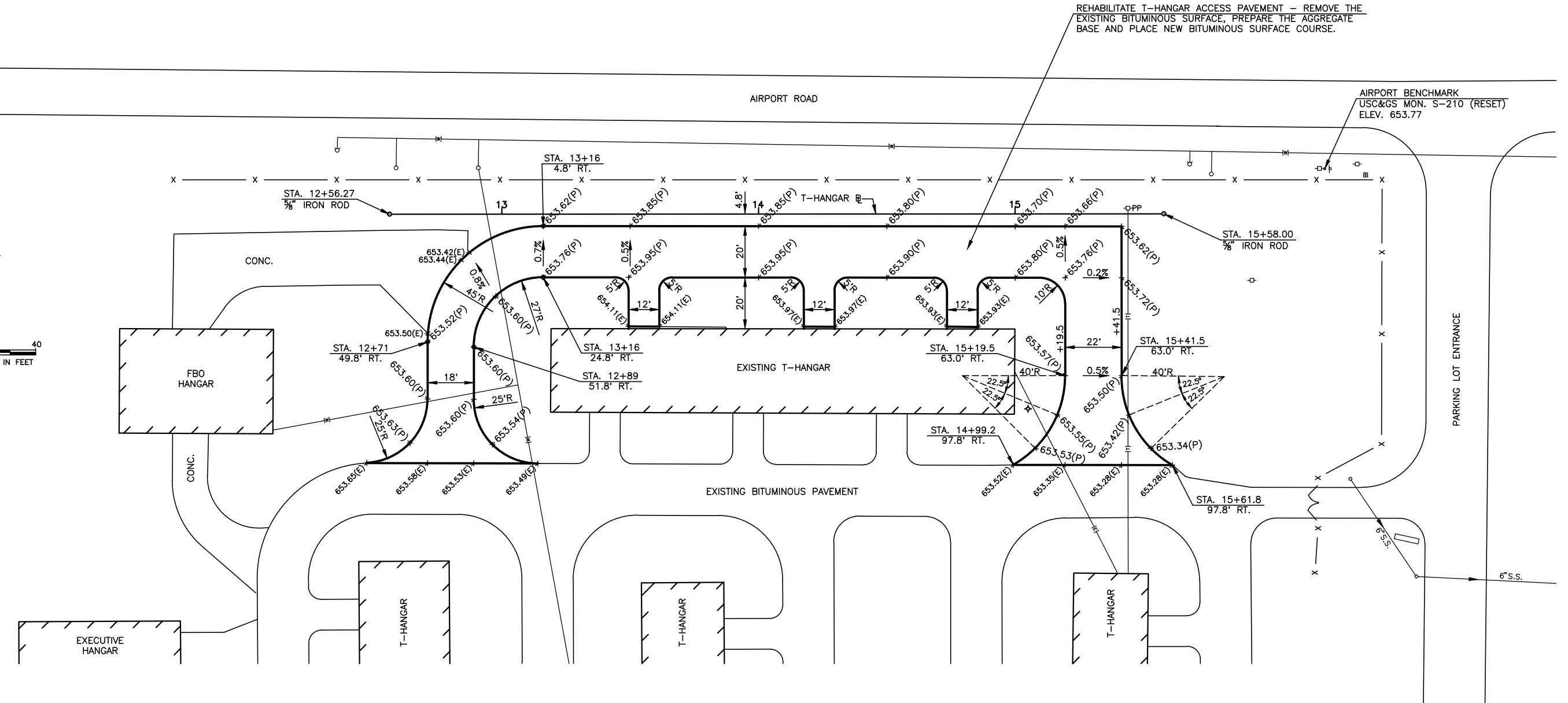
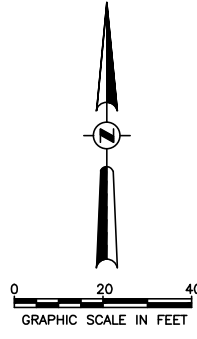
P.O.T. STA. 6+92.84
MAG NAIL

EXISTING TAXIWAY EDGE LIGHT

GENERAL NOTES

1. ELEVATIONS SHOWN FOLLOWED BY (P) ARE TOP OF FINISHED PAVEMENT SURFACE ELEVATIONS. (E) SHOWN AFTER AN ELEVATION DENOTES AN EXISTING ELEVATION.
2. WHERE PROPOSED BITUMINOUS SURFACE ABUTS EXISTING PAVEMENT, THE EXISTING PAVEMENT SHALL BE CUT TO PRODUCE A STRAIGHT VERTICAL FACE TO ABUT THE PROPOSED SURFACE TO. PRIOR TO SURFACING, THE VERTICAL FACES OF ALL ABUTTING EXISTING PAVEMENT SHALL BE PAINTED WITH LIQUID ASPHALT. COST OF THIS WORK SHALL BE CONSIDERED INCIDENTAL TO THE CONTRACT.
3. THE EXISTING BITUMINOUS SURFACE OF THE APRON PAVEMENT TO BE REHABILITATED UNDER THIS PROJECT SHALL BE REMOVED TO A DEPTH OF 3 INCHES BELOW THE PROPOSED FINISHED PAVEMENT SURFACE ELEVATIONS TO ALLOW A MINIMUM OF 3 INCHES OF NEW BITUMINOUS SURFACE MATERIAL TO BE PLACED TO THE PROPOSED FINISHED SURFACE PAVEMENT ELEVATIONS. THIS WORK WILL BE PAID FOR UNDER ITEM AR401650 BITUMINOUS PAVEMENT MILLING.
4. THE CONTRACTOR SHALL EXERCISE CAUTION WHEN MILLING THE PAVEMENT SO AS NOT TO DAMAGE THE EXISTING TIEDOWN MOORING EYE BASES THAT ARE TO REMAIN IN PLACE. THE CONTRACTOR SHALL COVER THE MOORING EYE CASTINGS TO REFRAIN FROM FILLING THE CASTINGS WITH BITUMINOUS MATERIAL DURING THE PAVING OPERATIONS.

CASEY MUNICIPAL AIRPORT CASEY, ILLINOIS	
APRON PAVEMENT LAYOUT AND ELEVATIONS	
HUTCHISON ENGINEERING, INC. JACKSONVILLE, ILLINOIS	
DRAWN BY: R.L.R. DATE: MAY, 2012	ILL. PROJ. NO. 1H8-4137 AIP PROJ. NO. 3-17-0014-810



GENERAL NOTES

1. ELEVATIONS SHOWN FOLLOWED BY (P) ARE TOP OF FINISHED PAVEMENT SURFACE ELEVATIONS. (E) SHOWN AFTER AN ELEVATION DENOTES AN EXISTING ELEVATION.
2. WHERE PROPOSED BITUMINOUS SURFACE ABUTS EXISTING PAVEMENT, THE EXISTING PAVEMENT SHALL BE CUT TO PRODUCE A STRAIGHT VERTICAL FACE TO ABUT THE PROPOSED SURFACE TO. PRIOR TO SURFACING, THE VERTICAL FACES OF ALL ABUTTING EXISTING PAVEMENT SHALL BE PAINTED WITH LIQUID ASPHALT. COST OF THIS WORK SHALL BE CONSIDERED INCIDENTAL TO THE CONTRACT.
3. THE EXISTING BITUMINOUS SURFACE SHALL BE REMOVED AND THE EXISTING AGGREGATE BASE SHALL BE BLADED AND SHAPED AS REQUIRED TO PROVIDE FOR THE APPLICATION OF A 4" THICKNESS OF PROPOSED BITUMINOUS SURFACE TO THE FINISHED ELEVATIONS SHOWN. THE COST OF REMOVAL OF THE EXISTING AGGREGATE BASE MATERIAL, WHERE NECESSARY, SHALL BE CONSIDERED INCIDENTAL TO AGGREGATE BASE PREPARATION.
4. ALL REMOVED BITUMINOUS SURFACE MATERIAL AND BLADED/REMOVED AGGREGATE BASE MATERIAL SHALL BE DISPOSED OF BY THE CONTRACTOR OFF THE AIRPORT SITE AT AN APPROVED SITE PROVIDED BY THE CONTRACTOR. THE COST OF THIS DISPOSAL SHALL BE INCLUDED IN THE COST OF THE AGGREGATE BASE PREPARATION AND THE COST TO REMOVE BITUMINOUS SURFACE COURSE.
5. IN LOCATIONS WHERE UNSTABLE EXISTING AGGREGATE BASE COURSE IS ENCOUNTERED REQUIRING REPAIR OF THE BASE, THE AREAS DESIGNATED BY THE RESIDENT ENGINEER SHALL BE EXCAVATED AND THE REMOVED MATERIAL DISPOSED OF. THE AREAS SHALL BE REPLACED WITH AN EIGHT (8) INCH DEPTH OF NEW AGGREGATE BASE MATERIAL MEETING THE REQUIREMENTS OF ITEM 209. THE COST OF THE REMOVAL AND DISPOSAL OF THE EXISTING BASE SHALL BE CONSIDERED INCIDENTAL TO AGGREGATE BASE PREPARATION. FURNISHING, PLACING AND COMPACTING NEW BASE MATERIAL SHALL BE PAID FOR AT THE UNIT PRICE BID FOR CRUSHED AGGREGATE BASE COURSE.
6. THE QUANTITY FOR CRUSHED AGGREGATE BASE COURSE THAT IS INCLUDED IN THESE CONSTRUCTION PLANS IS ESTIMATED IN ORDER TO ESTABLISH A WORK ITEM BID PRICE. THE QUANTITY WILL BE ADJUSTED BY THE RESIDENT ENGINEER DURING CONSTRUCTION BASED UPON FIELD INSPECTION AND IDENTIFICATION OF LOCATIONS REQUIRING REPAIR OF THE EXISTING AGGREGATE BASE. THE RIGHT IS RESERVED TO INCREASE, DECREASE OR ELIMINATE THE QUANTITY FOR CRUSHED AGGREGATE BASE COURSE WITH NO UNIT PRICE ADJUSTMENT FOR THE ALTERED CONTRACT ITEM BEING ALLOWED.
7. THE CONTRACTOR SHALL EXERCISE CAUTION DURING CONSTRUCTION OPERATIONS SO AS NOT TO DAMAGE THE EXISTING HANGAR BUILDINGS. ANY DAMAGE TO THE BUILDINGS SHALL BE REPAIRED BY THE CONTRACTOR AT HIS OWN EXPENSE TO THE SATISFACTION OF THE ENGINEER AND THE AIRPORT MANAGEMENT.

CASEY MUNICIPAL AIRPORT CASEY, ILLINOIS	
T-HANGAR ACCESS PAVEMENT LAYOUT AND ELEVATIONS	
HUTCHISON ENGINEERING, INC. JACKSONVILLE, ILLINOIS	
DRAWN BY: R.L.R. DATE: MAY, 2012	ILL. PROJ. NO. 1H8-4137 AIP PROJ. NO. 3-17-0014-810