

INDEX OF SHEETS

08-03-2018 LETTING ITEM 019

1. COVER SHEET
2. GENERAL NOTES
- 3 - 4. SUMMARY OF QUANTITIES
5. TYPICAL SECTION
6. SCHEDULES
7. TRAFFIC CONTROL AND PROTECTION, STANDARD 701402 (SPECIAL) - STAGE I
8. TRAFFIC CONTROL AND PROTECTION, STANDARD 701402 (SPECIAL) - STAGE II
- 9 - 21. STRUCTURE REPAIR PLANS
22. PAVEMENT MARKING DETAILS

STATE OF ILLINOIS
DEPARTMENT OF TRANSPORTATION

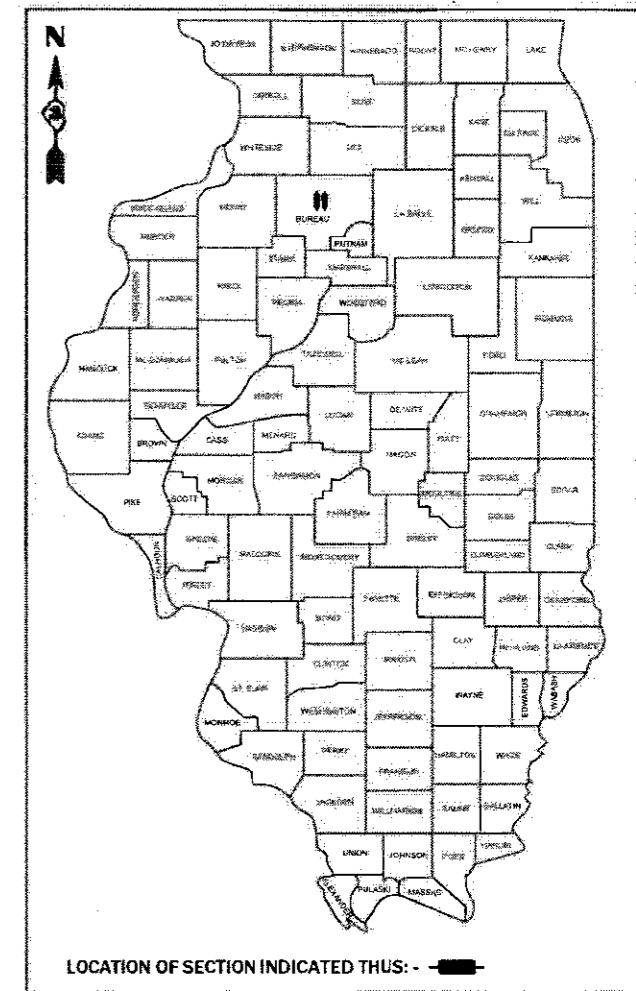
PROPOSED HIGHWAY PLANS

F.A.I. ROUTE 180 (I-180) SECTION (06-2HB)BRR PROJECT BRIDGE REPAIRS BUREAU COUNTY

C-93-064-17

F.A.I. RTE.	SECTION	COUNTY	TOTAL SHEETS
180	06-2HB)BRR	BUREAU	22
			CONTRACT NO. 66H27

D-93-002-17



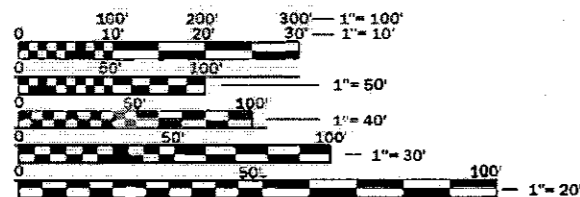
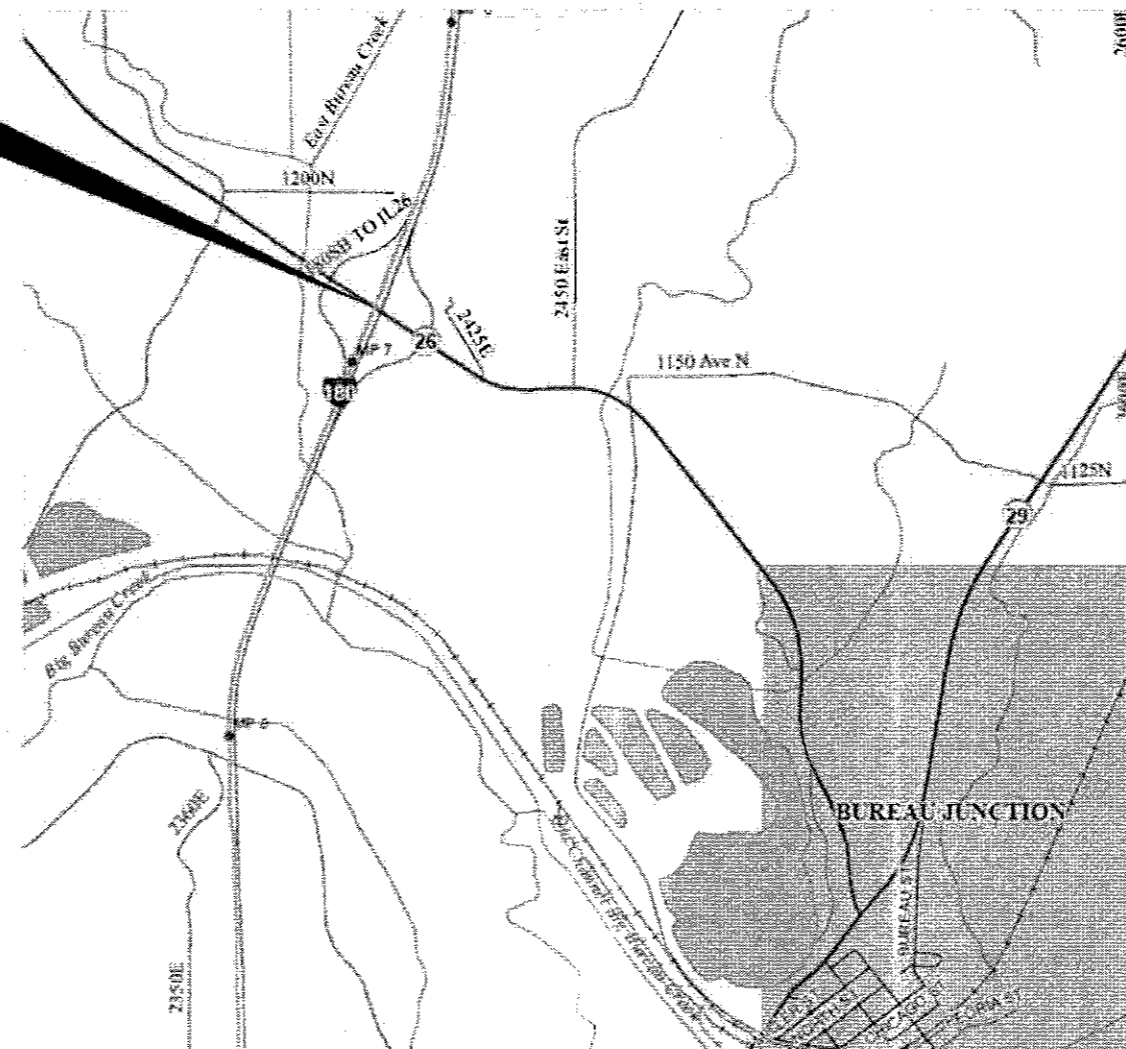
LOCATION OF SECTION INDICATED THIS: - - -

FUNCTIONAL CLASSIFICATION

RURAL INTERSTATE
F.A.I. ROUTE 180 (I-180)
2017 ADT = 21500
P.V. 62.60% S.U. 5.4% M.U. 32.0%

RURAL MINOR ARTERIAL
F.A.P. 615 (IL 26)
2017 ADT = 2400
P.V. 89.0% S.U. 6.4% M.U. 4.6%

PROJECT LOCATION
STRUCTURE NO. 006-0045 (SB)
STRUCTURE NO. 006-0046 (NB)
CARRYING FAI 180 (I-180) OVER F.A.P. 615 (IL 26)
2.0 MILES NORTHWEST OF BUREAU JUNCTION



FULL SIZE PLANS HAVE BEEN PREPARED USING STANDARD ENGINEERING SCALES. REDUCED SIZED PLANS WILL NOT CONFORM TO STANDARD SCALES. IN MAKING MEASUREMENTS ON REDUCED PLANS, THE ABOVE SCALES MAY BE USED.

J.U.L.I.E.
JOINT UTILITY LOCATION INFORMATION FOR EXCAVATION
1-800-892-0123
OR 811

PROJECT ENGINEER: JOE KANNEL P.E.
UNIT CHIEF: RON WOODSHANK
DISTRICT 3 NO. (815) 434-6131
CONTRACT NO. 66H27

GROSS LENGTH = 213 FT. = 0.04 MILE
NET LENGTH = 213 FT. = 0.04 MILE

STATE OF ILLINOIS
DEPARTMENT OF TRANSPORTATION

SUBMITTED 05/11/2018
Kim Stankovich REGIONAL ENGINEER

June 29, 2018
David P. Chaffin ENGINEER OF DESIGN AND ENVIRONMENT

June 29, 2018
David P. Chaffin DIRECTOR OF HIGHWAYS PROJECT IMPLEMENTATION

**PRINTED BY THE AUTHORITY
OF THE STATE OF ILLINOIS**

GENERAL NOTES

ANY REFERENCE TO A STANDARD IN THESE PLANS SHALL BE INTERPRETED TO MEAN THE EDITION AS INDICATED BY THE SUBNUMBER SHOWN IN THE LIST OF STANDARDS OR THE COPY INCLUDED IN THESE PLANS.

COMMITMENTS

STATE OF ILLINOIS
DEPARTMENT OF TRANSPORTATION
DISTRICT THREE
AS BUILT INFORMATION

SUPERVISING CONSTRUCTION FIELD ENGINEER

RESIDENT ENGINEER / TECHNICIAN

START & END DATES
OF CONSTRUCTION:

INSPECTORS:

STATE OF ILLINOIS
DEPARTMENT OF TRANSPORTATION
DISTRICT THREE

PREPARED BY: Tom Beaulieu
DISTRICT STUDIES & PLANS ENGINEER

DATE: May 19, 2018

EXAMINED BY: [Signature]
DISTRICT CONSTRUCTION ENGINEER

[Signature]
DISTRICT MATERIALS ENGINEER

[Signature]
DISTRICT OPERATIONS ENGINEER

FILE NAME =	USER NAME = woodywp	DESIGNED - RW	REVISED -
PROJECT = ILL04EBIDNTEG	PROJECT = ILL04EBIDNTEG	DRAWN - RW	REVISED -
SCALE = 100,000 / 1 in.	DATE = 2/14/2018	CHECKED - EP	REVISED -
PLOT DATE = 5/22/2018			

STATE OF ILLINOIS
DEPARTMENT OF TRANSPORTATION

GENERAL NOTES

SCALE: SHEET 1 OF 1 SHEETS STA. TO STA.

F.A.I. RTE.	SECTION	COUNTY	TOTAL SHEETS	SHEET NO.
180	(06-2HB)BRR	BUREAU	22	2
CONTRACT NO. 66H27				
ILLINOIS FED. AID PROJECT				

CODE NO.	ITEM	UNIT	TOTAL QUANTITY	CONSTRUCTION CODE	
				CONTRACT MAINTENANCE	
				100% STATE	
				BRIDGE 0047	BRIDGE 0047
				S.N. 006-0045	S.N. 006-0046
50102400	CONCRETE REMOVAL	CU YD	48.4	24.2	24.2
50300255	CONCRETE SUPERSTRUCTURE	CU YD	47.6	23.8	23.8
50300300	PROTECTIVE COAT	SQ YD	130	65	65
50800205	REINFORCEMENT BARS, EPOXY COATED	POUND	11460	5730	5730
50800515	BAR SPLICERS	EACH	80	40	40
50800530	MECHANICAL SPLICERS	EACH	920	460	460
52000110	PREFORMED JOINT STRIP SEAL	FOOT	168	84	84
67100100	MOBILIZATION	L SUM	1	0.5	0.5
70300100	SHORT TERM PAVEMENT MARKING	FOOT	472	236	236
70300150	SHORT TERM PAVEMENT MARKING REMOVAL	SQ FT	156	78	78
70400100	TEMPORARY CONCRETE BARRIER	FOOT	1250	625	625
70400200	RELOCATE TEMPORARY CONCRETE BARRIER	FOOT	1150	575	575
70600250	IMPACT ATTENUATORS, TEMPORARY (NON- REDIRECTIVE), TEST LEVEL 3	EACH	2	1	1
70600350	IMPACT ATTENUATORS, RELOCATE (NON- REDIRECTIVE), TEST LEVEL 3	EACH	2	1	1

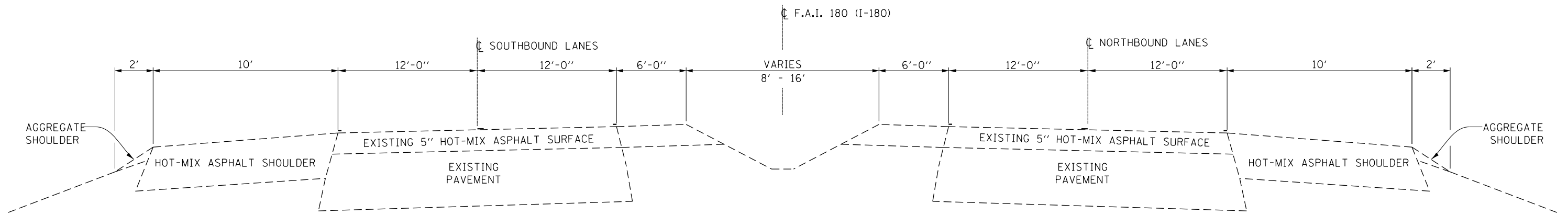
M

CODE NO.	ITEM	UNIT	TOTAL QUANTITY	CONSTRUCTION CODE	
				CONTRACT MAINTENANCE 100% STATE	
				BRIDGE 0047	BRIDGE 0047
				S.N. 006-0045	S.N. 006-0046
* 78009004	MODIFIED URETHANE PAVEMENT MARKING - LINE 4"	FOOT	4560	2280	2280
* 78009006	MODIFIED URETHANE PAVEMENT MARKING - LINE 6"	FOOT	1180	590	590
X0325748	ACRYLIC COATING	SQ YD	510	246	264
X0325749	FIBER WRAP	SQ FT	836.1	458.2	377.9
X0326649	LINEAR DELINEATOR PANELS, 6 INCH	EACH	8	4	4
X0327980	PAVEMENT MARKING REMOVAL - WATER BLASTING	SQ FT	2098	1049	1049
X5080525	BAR SPLICERS, SPECIAL	EACH	20	10	10
X7010208	TRAFFIC CONTROL AND PROTECTION, STANDARD 701402 (SPECIAL)	EACH	2	1	1
X7010520	TRAFFIC CONTROL AND PROTECTION, STANDARD 701201 (SPECIAL)	L SUM	1	0.5	0.5
X7015005	CHANGEABLE MESSAGE SIGN	CAL DAY	65	32	33
Z0012754	STRUCTURAL REPAIR OF CONCRETE (DEPTH EQUAL TO OR LESS THAN 5 INCHES)	SQ FT	311.3	158.6	152.7
Z0043800	PRECAST PRESTRESSED CONCRETE I-BEAM REPAIR	SQ FT	159.7	85.4	74.3

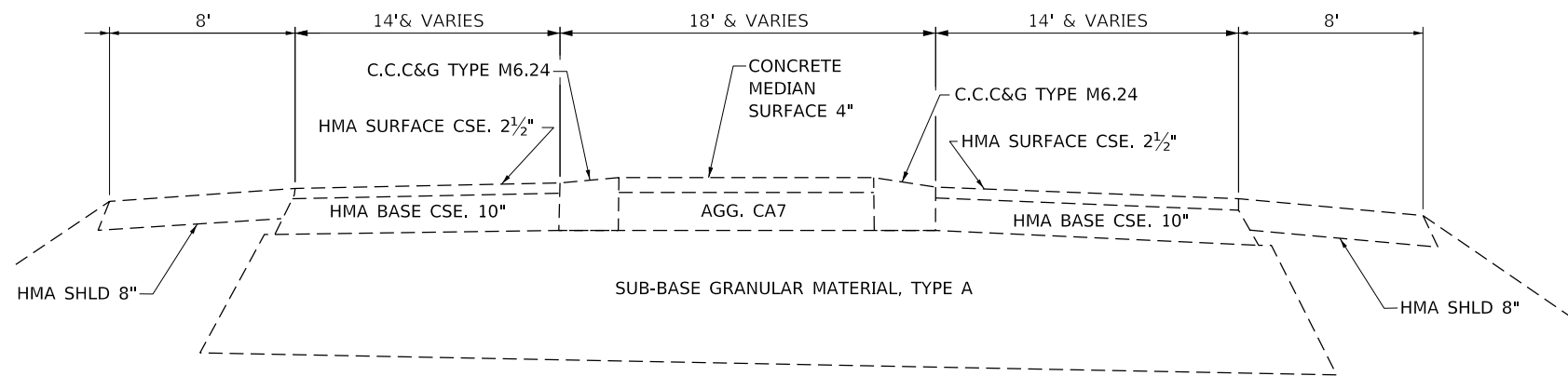
*= SPECIALTY ITEM

REV. 6/18/18

FILE NAME *	USER NAME = woodyrjp	DESIGNED - RW	REVISED -	STATE OF ILLINOIS DEPARTMENT OF TRANSPORTATION	SUMMARY OF QUANTITIES				F.A.I. RTE.	SECTION	COUNTY	TOTAL SHEETS	SHEET NO.
px:\IL084EB\INTEG\ilndc.gov\FWIDOT\Documents\DOT Offices\District 3\Projects\I356H27\CAD\Drawings\I356H27-drawings	DRAWN - RW	REVISED -	REVISED -						180	(06-2HB)BRR	BUREAU	22	4
Default	PLOT SCALE = 100.0000 / in.	CHECKED - JW	REVISED -		SCALE: SHEET 2 OF 2 SHEETS STA. TO STA.				ILLINOIS FED. AID PROJECT				
	PLOT DATE = 5/2/2018	DATE - 05/02/2018	REVISED -		CONTRACT NO. 66H27								



**TYPICAL SECTION
FA.I. 180 (I-180)**



**TYPICAL SECTION
F.A.P. 615 (IL 26)**

FILE NAME =	USER NAME = woodyetjp	DESIGNED - RW	REVISED -	STATE OF ILLINOIS DEPARTMENT OF TRANSPORTATION	TYPICAL SECTIONS			F.A.I. RTE.	SECTION	COUNTY	TOTAL SHEETS	SHEET NO.
pw:\IL084EB\INTEG\ilnotes.gov\PWIDOT\Documents\DOT Offices\District 3\Projects\D366H27\CADDData\D366H27-deta	DRAWN - RW	CHECKED - EP	REVISED -					180	(06-2HB)BRR	BUREAU	22	5
Default	PLOT SCALE = 100.0000' / in.	DATE - 2/14/2018	REVISED -		SCALE: SHEET 1 OF 1 SHEETS STA. TO STA.			CONTRACT NO. 66H27				
	PLOT DATE = 5/2/2018	DATE - 2/14/2018	REVISED -					ILLINOIS FED. AID PROJECT				

**SCHEDULE
STRUCTURE NO. 006-0045 (SB)**

LOCATION	PAVEMENT MARKING REMOVAL WATER BLASTING	SHORT-TERM PAVEMENT MARKING	SHORT-TERM PAVEMENT MARKING REMOVAL	MODIFIED URETHANE PAVEMENT MARKING LINE 4"	MODIFIED URETHANE PAVEMENT MARKING LINE 6"	LINEAR DELINEATOR PANELS, 6 INCH
	SQ FT	FOOT	SQ FT	FOOT	FOOT	EACH
STAGE I	672					
STAGE II	377	236	78	2280	590	4
TOTAL	1049	236	78	2280	590	4

**SCHEDULE
STRUCTURE NO. 006-0045 (SB)**

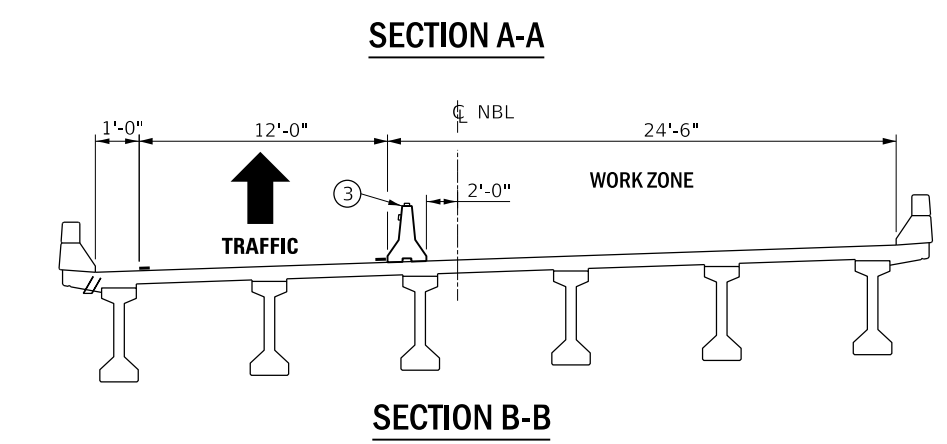
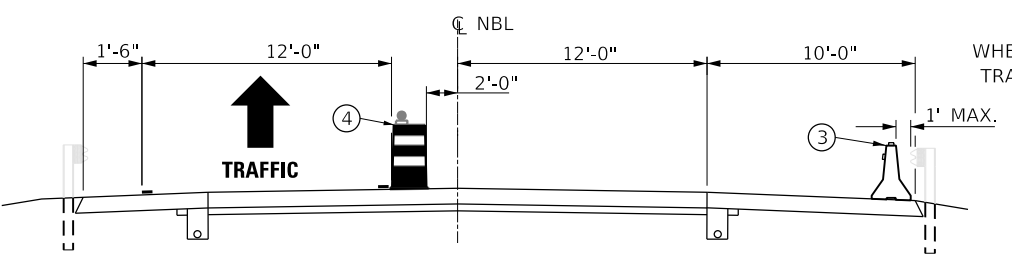
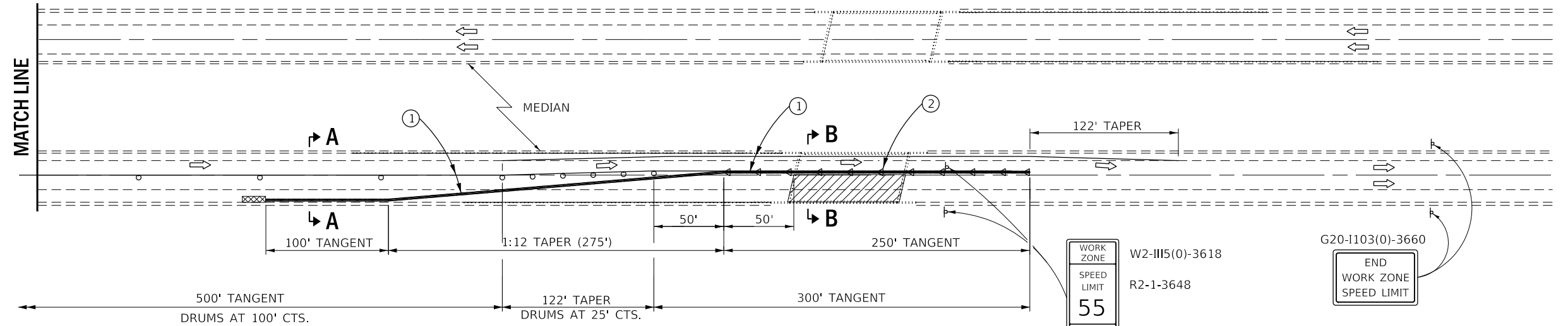
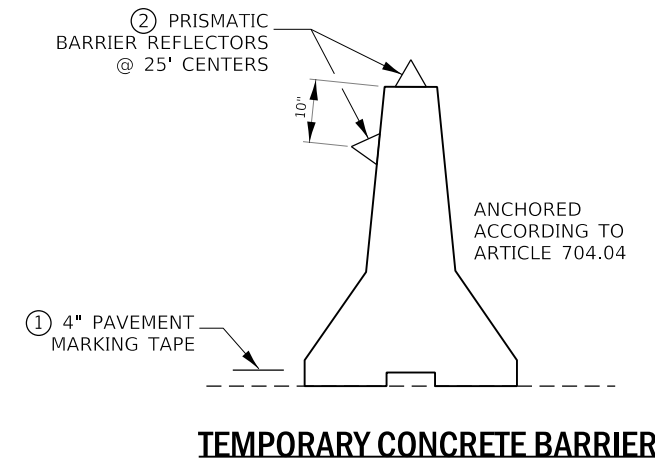
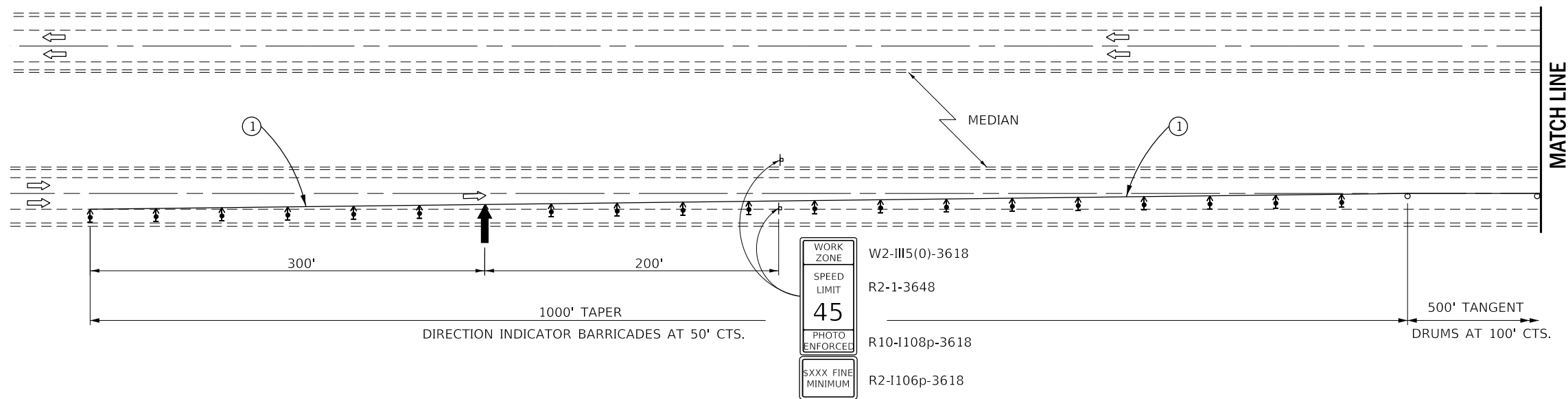
LOCATION	TRAFFIC CONTROL & PROTECTION, STANDARD 701402 (SPECIAL)	TEMPORARY CONCRETE BARRIER	RELOCATE TEMPORARY CONCRETE BARRIER
	EACH	FOOT	FOOT
STAGE I	1	625	
STAGE II			575
TOTAL	1	625	575

**SCHEDULE
STRUCTURE NO. 006-0046 (NB)**

LOCATION	PAVEMENT MARKING REMOVAL WATER BLASTING	SHORT-TERM PAVEMENT MARKING	SHORT-TERM PAVEMENT MARKING REMOVAL	MODIFIED URETHANE PAVEMENT MARKING LINE 4"	MODIFIED URETHANE PAVEMENT MARKING LINE 6"	LINEAR DELINEATOR PANELS, 6 INCH
	SQ FT	FOOT	SQ FT	FOOT	FOOT	EACH
STAGE I	672					
STAGE II	377	236	78	2280	590	4
TOTAL	1049	236	78	2280	590	4

**SCHEDULE
STRUCTURE NO. 006-0046 (NB)**

LOCATION	TRAFFIC CONTROL & PROTECTION, STANDARD 701402 (SPECIAL)	TEMPORARY CONCRETE BARRIER	RELOCATE TEMPORARY CONCRETE BARRIER
	EACH	FOOT	FOOT
STAGE I	1	625	
STAGE II			575
TOTAL	1	625	575



WHEN WORK IS BEING PERFORMED IN THE OPPOSITE DIRECTION OF TRAVEL, TRAFFIC CONTROL AND PROTECTION SHALL BE THE SAME AS TO WHAT IS SHOWN THROUGH 180° DEGREE ROTATION

SYMBOLS

- ↑ Arrow board
- ▨ Work area
- ⊥ SIGN
- ↑ DIRECTION INDICATOR BARRICADE WITH STEADY BURN MONODIRECTIONAL LIGHT
- TYPE II BARRICADE, DRUM, OR VERTICAL BARRICADE WITH STEADY BURN MONODIRECTIONAL LIGHT
- ▬ TEMPORARY CONCRETE BARRIER
- ◁ MONODIRECTIONAL GUARDRAIL/BARRIER WALL REFLECTOR
- ▨ IMPACT ATTENUATOR

- ① TEMPORARY PAVEMENT MARKING TAPE SHALL BE PLACED THROUGHOUT THE TAPER AND ALONG-SIDE THE WORK AREA. THE RIGHT EDGE LINE SHALL BE WHITE AND THE LEFT EDGE LINE SHALL BE YELLOW.
- ② BARRIER WALL/GUARDRAIL MARKERS AT 25' (7.6 M). MARKERS ON RIGHT SHALL BE CRYSTAL AND MARKERS ON LEFT SHALL BE AMBER.
- ③ TEMPORARY CONCRETE BARRIER.
- ④ TRAFFIC CONTROL DRUM

GENERAL NOTES

THIS STANDARD IS USED WHERE AT ANY TIME ANY VEHICLE, EQUIPMENT, WORKERS OR THEIR ACTIVITIES WILL ENCR OACH ON THE PAVEMENT OR ON THE SHOULDER WITHIN 24" OF THE EDGE OF PAVEMENT FOR DAYLIGHT OPERATION EXCEEDING ONE DAY AND WHERE TEMPORARY CONCRETE BARRIER IS UTILIZED.

THIS STANDARD MUST ALWAYS BE USED IN COMBINATION WITH STANDARD 701400 (SPECIAL).

WHEN WORK IS BEING PERFORMED IN THE LEFT LANE, FOR STAGE II, THE SET UP WOULD BE A MIRROR IMAGE TO WHAT IS SHOWN FOR STAGE I.

TEMPORARY CONCRETE BARRIER SHALL BE ACCORDING TO STANDARD 704001.

WHENEVER WORK IS TO BE PERFORMED ON IL 116, TRAFFIC CONTROL AND PROTECTION, STANDARD 701201 (SPECIAL) SHALL APPLY.

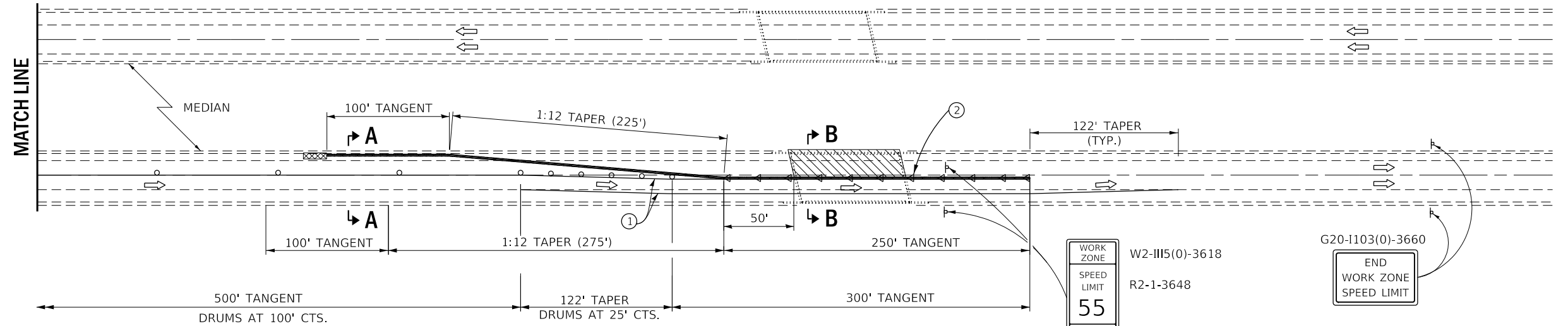
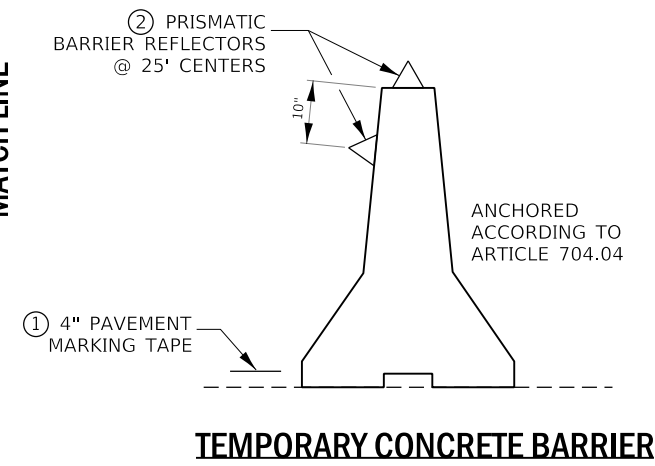
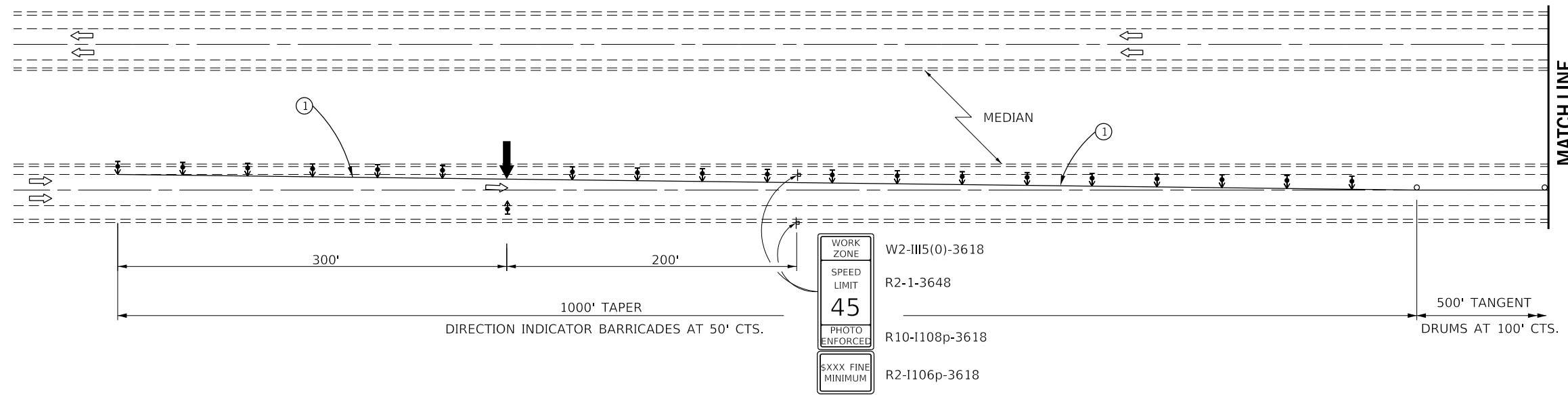
FILE NAME =	USER NAME = woodyetjp	DESIGNED - RW	REVISED -
pw:\IL084EBIDINTEG\ifnotes.gov\PWIDOT\Documents\DOT Offices\District 3\Projects\D366H27\CADDData\D366H27-details	DRAWN - RW	CHECKED - EP	REVISED -
Default	PLOT SCALE = 100.0000' / in.	DATE - 2/14/2018	REVISED -
	PLOT DATE = 5/2/2018		

**STATE OF ILLINOIS
DEPARTMENT OF TRANSPORTATION**

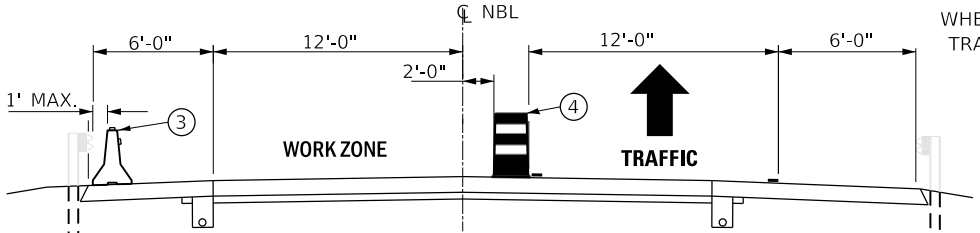
**TRAFFIC CONTROL AND PROTECTION,
STANDARD 701402 (SPECIAL) - STAGE I**

SCALE: SHEET 1 OF 1 SHEETS STA. TO STA.

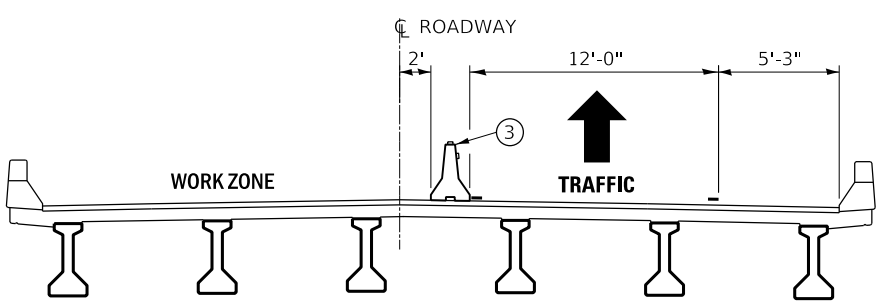
F.A.I. RTE.	SECTION	COUNTY	TOTAL SHEETS	SHEET NO.
180	(06-2HB)BRR	BUREAU	22	7
ILLINOIS FED. AID PROJECT			CONTRACT NO. 66H27	



**PLAN
STAGE II**



SECTION A-A



SECTION B-B

WHEN WORK IS BEING PERFORMED IN THE OPPOSITE DIRECTION OF TRAVEL, TRAFFIC CONTROL AND PROTECTION SHALL BE THE SAME AS TO WHAT IS SHOWN THROUGH 180° DEGREE ROTATION

SYMBOLS

- ↑ Arrow board
- ▨ Work area
- ⊥ SIGN
- ⬆ DIRECTION INDICATOR BARRICADE WITH STEADY BURN MONODIRECTIONAL LIGHT
- TYPE II BARRICADE, DRUM, OR VERTICAL BARRICADE
- ▬ TEMPORARY CONCRETE BARRIER
- ◁ MONODIRECTIONAL GUARDRAIL/BARRIER WALL REFLECTOR
- ▩ IMPACT ATTENUATOR

- ① TEMPORARY PAVEMENT MARKING TAPE SHALL BE PLACED THROUGHOUT THE TAPER AND ALONG-SIDE THE WORK AREA. THE RIGHT EDGE LINE SHALL BE WHITE AND THE LEFT EDGE LINE SHALL BE YELLOW.
- ② BARRIER WALL/GUARDRAIL MARKERS AT 25' (7.6 M). MARKERS ON RIGHT SHALL BE CRYSTAL AND MARKERS ON LEFT SHALL BE AMBER.
- ③ TEMPORARY CONCRETE BARRIER.
- ④ TRAFFIC CONTROL DRUM

GENERAL NOTES

THIS STANDARD IS USED WHERE AT ANY TIME ANY VEHICLE, EQUIPMENT, WORKERS OR THEIR ACTIVITIES WILL ENCRUCH ON THE PAVEMENT OR ON THE SHOULDER WITHIN 24" OF THE EDGE OF PAVEMENT FOR DAYLIGHT OPERATION EXCEEDING ONE DAY AND WHERE TEMPORARY CONCRETE BARRIER IS UTILIZED.

THIS STANDARD MUST ALWAYS BE USED IN COMBINATION WITH STANDARD 701400 (SPECIAL).

WHEN WORK IS BEING PERFORMED IN THE LEFT LANE, FOR STAGE II, THE SET UP WOULD BE A MIRROR IMAGE TO WHAT IS SHOWN FOR STAGE I.

TEMPORARY CONCRETE BARRIER SHALL BE ACCORDING TO STANDARD 704001.

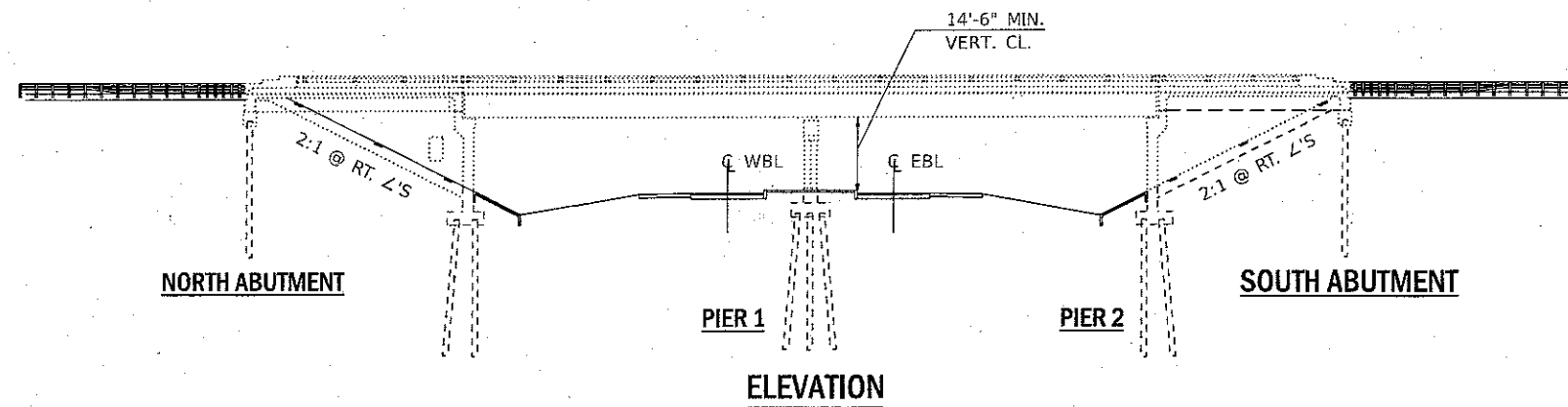
FILE NAME =	USER NAME = woodyetjp	DESIGNED - RW	REVISED -
pw:\IL084EBIDINTEG\Illinois.gov\PWIDOT\Documents\DOT Offices\District 3\Projects\D366H27\CADDData\D366H27-details	DRAWN - RW	CHECKED - EP	REVISED -
Default	PLOT SCALE = 100.0000' / in.	DATE - 2/14/2018	REVISED -
	PLOT DATE = 5/2/2018		

**STATE OF ILLINOIS
DEPARTMENT OF TRANSPORTATION**

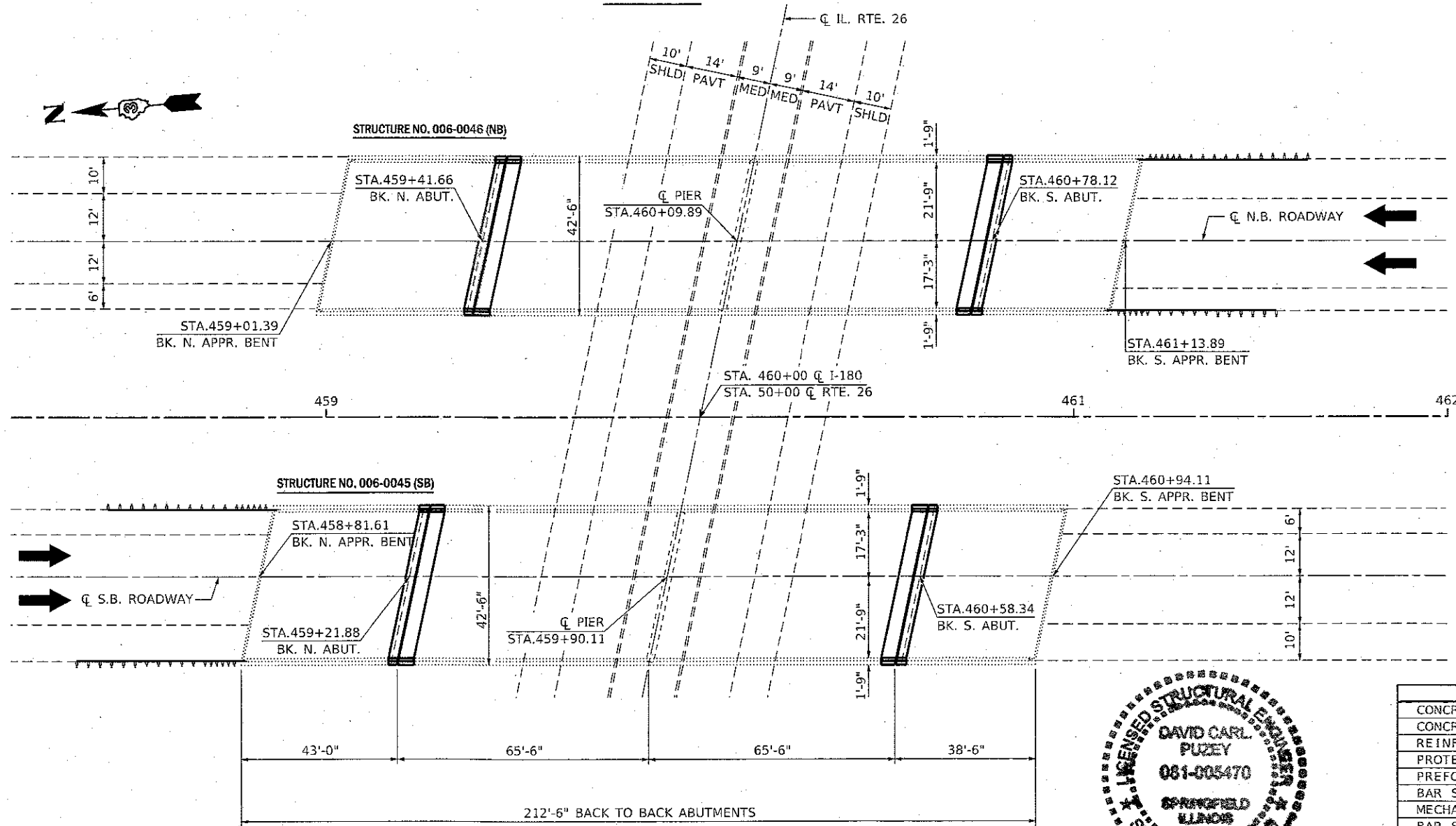
**TRAFFIC CONTROL AND PROTECTION,
STANDARD 701402 (SPECIAL) - STAGE II**

SCALE: SHEET 1 OF 1 SHEETS STA. TO STA.

F.A.I. RTE.	SECTION	COUNTY	TOTAL SHEETS	SHEET NO.
180	(06-2HB)BRR	BUREAU	22	8
CONTRACT NO. 66H27			ILLINOIS FED. AID PROJECT	



ELEVATION



PLAN

GENERAL NOTES

PLAN DIMENSIONS AND DETAILS RELATIVE TO EXISTING PLANS ARE SUBJECT TO NOMINAL CONSTRUCTION VARIATIONS. THE CONTRACTOR SHALL FIELD VERIFY EXISTING DIMENSIONS AND DETAILS AFFECTING NEW CONSTRUCTION AND MAKE NECESSARY APPROVED ADJUSTMENTS PRIOR TO CONSTRUCTION OR ORDERING OF MATERIALS. SUCH VARIATIONS SHALL NOT BE CAUSE FOR ADDITIONAL COMPENSATION FOR A CHANGE IN SCOPE OF WORK; HOWEVER, THE CONTRACTOR WILL BE PAID FOR THE QUANTITY ACTUALLY FURNISHED AT THE UNIT PRICE BID FOR THE WORK.

PROTECTIVE COAT SHALL BE APPLIED TO THE DECK SURFACE AND INSIDE FACE OF PARAPETS FOR ALL "NEW CONCRETE".

REINFORCEMENT BARS DESIGNATED (E) SHALL BE EPOXY COATED.

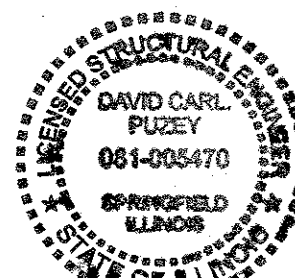
EXISTING REINFORCEMENT BARS EXTENDING INTO THE REMOVAL AREA SHALL BE CLEANED, STRAIGHTENED AND INCORPORATED INTO THE NEW CONSTRUCTION. ANY REINFORCEMENT BARS THAT ARE DAMAGED DURING CONCRETE REMOVAL SHALL BE REPLACED WITH AN APPROVED BAR SPLICER OR ANCHORAGE SYSTEM. COST INCLUDED WITH CONCRETE REMOVAL.

THE CONTRACTOR SHALL USE EXTREME CARE DURING CONCRETE REMOVAL SO AS NOT TO DAMAGE THE PPC I-BEAM.

JOINT OPENING SHALL BE ADJUSTED ACCORDING TO ARTICLE 520.04 OF THE STANDARD SPECIFICATIONS WHEN THE DECK IS POURED AT AN AMBIENT TEMPERATURE OTHER THAN 50 DEGREES F.

**TOTAL BILL OF MATERIAL
2 STRUCTURES**

ITEM	UNIT	SUPER	SUB	TOTAL
CONCRETE REMOVAL	CU YD	48.4		48.4
CONCRETE SUPERSTRUCTURE	CU YD	47.6		47.6
REINFORCEMENT BARS, EPOXY COATED	POUND	11460		11460
PROTECTIVE COAT	SQ YD	130		130
PREFORMED JOINT STRIP SEAL	FOOT	168		168
BAR SPLICER	EACH	80		80
MECHANICAL SPLICER	EACH	920		920
BAR SPLICER, SPECIAL	EACH	20		20
PRECAST PRESTRESSED CONCRETE I-BEAM REPAIR	SQ FT	159.7		159.7
STRUCTURAL REPAIR OF CONCRETE (DEPTH EQUAL TO OR LESS THAN 5")	SQ FT		311.3	311.3
ACRYLIC COATING	SQ YD	510		510
FIBER WRAP	SQ FT	836.1		836.1



*David Carl Puzey 7/2/18
Expires 11/30/18*

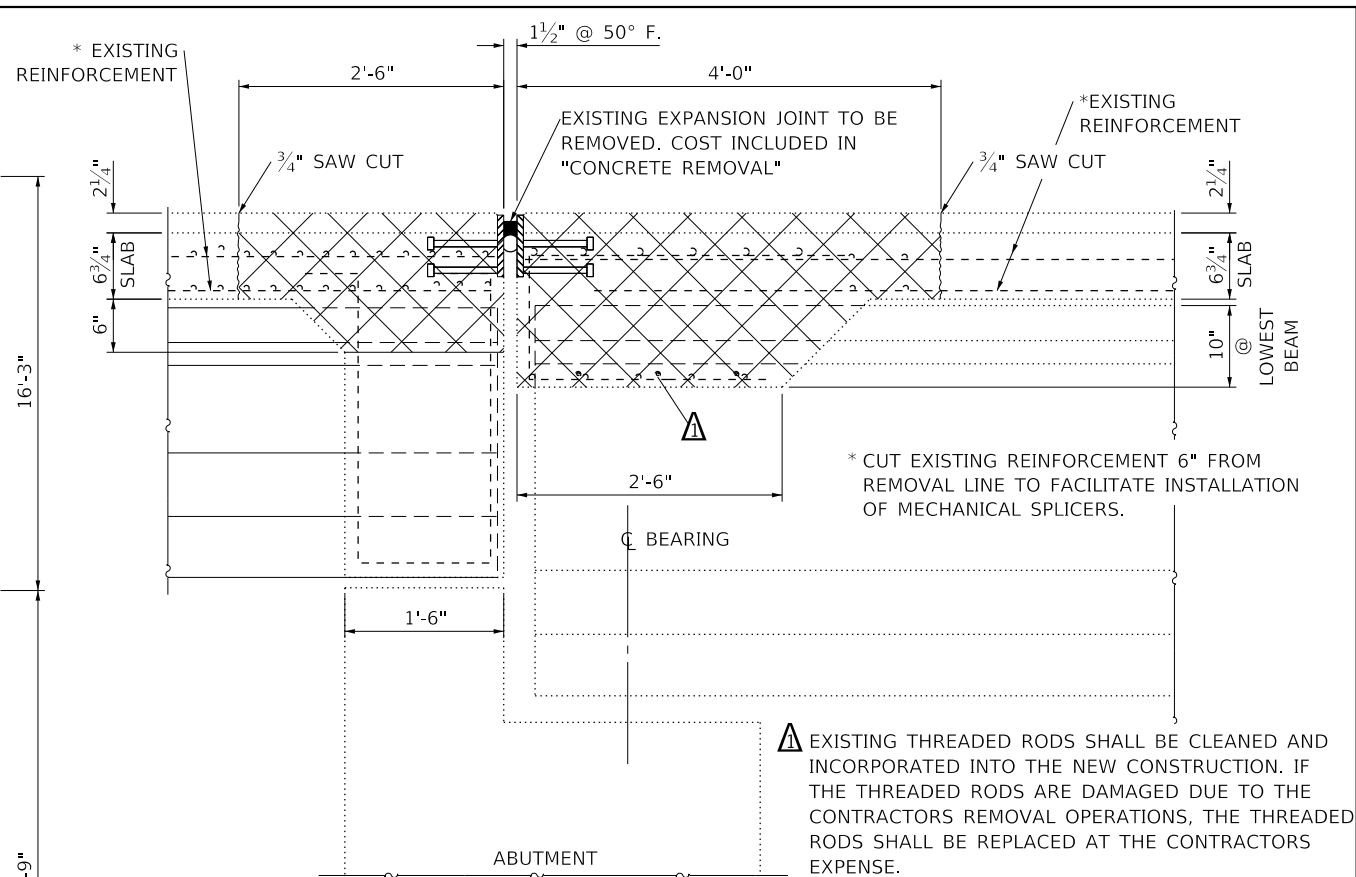
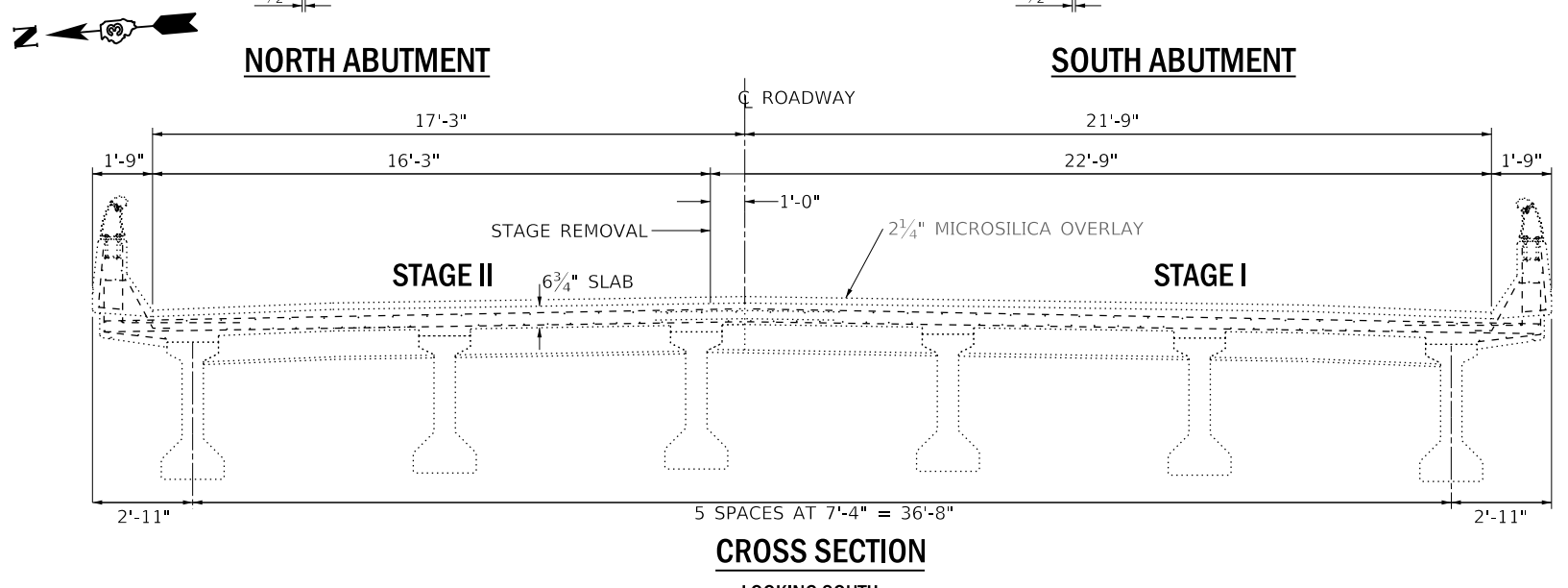
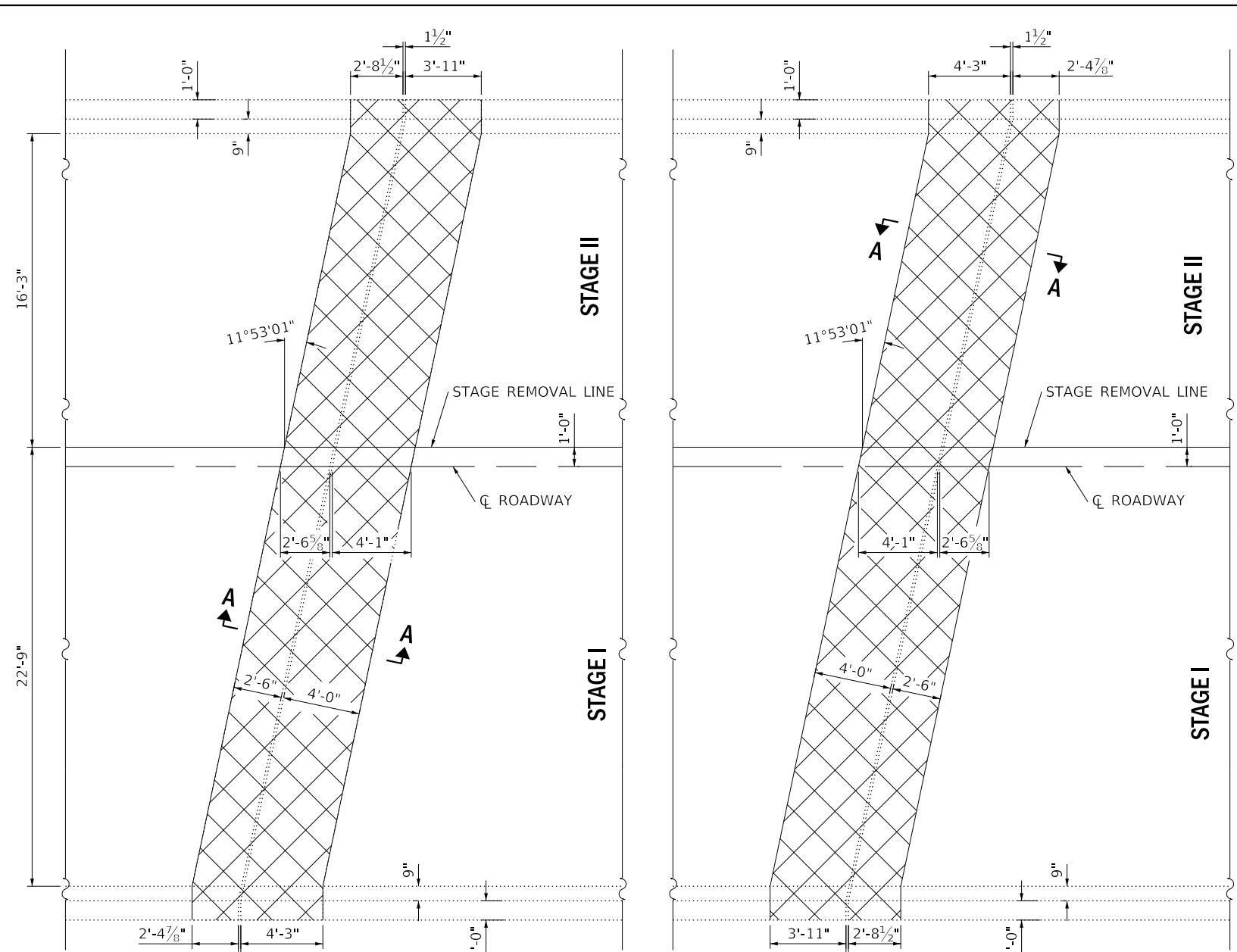
FILE NAME =	USER NAME = woodyrjp	DESIGNED - RW	REVISED -
PROJECT =	PROJECT =	DRAWN - JW	REVISED -
PLOT SCALE = 1/8" = 1'-0"	CHECKED - EP	REVISED -	REVISED -
PLOT DATE = 6/9/2018	DATE = 02/01/2018	REVISED -	REVISED -

**STATE OF ILLINOIS
DEPARTMENT OF TRANSPORTATION**

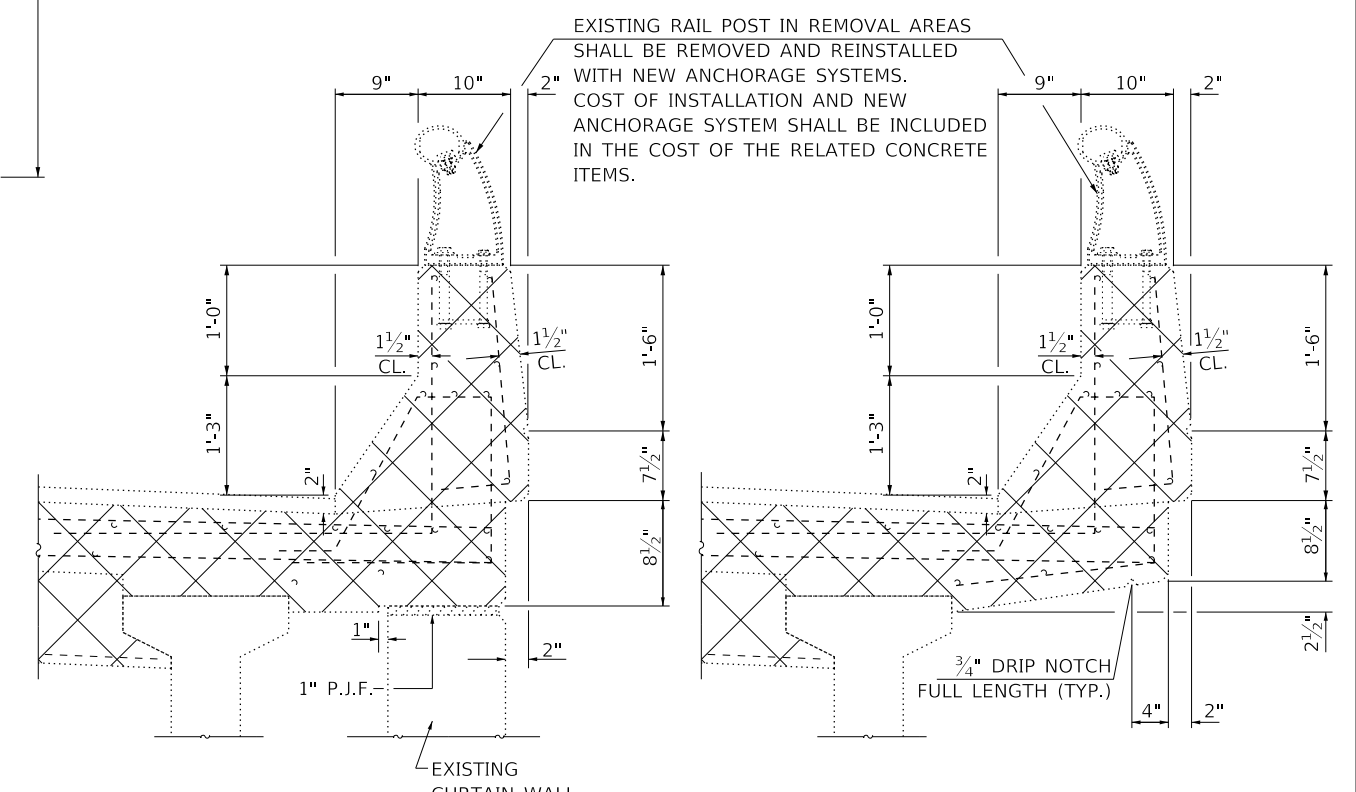
**GENERAL PLAN AND ELEVATION
FOR S.N. 006-0045 (SB) & S.N. 006-0046 (NB)**

F.A.I. RTE. 180	SECTION (06-2HB)BRR	COUNTY BUREAU	TOTAL SHEETS 22	SHEET NO. 9
CONTRACT NO. 66H27			ILLINOIS FED. AID PROJECT	

SCALE: SHEET 1 OF 13 SHEETS STA. TO STA.



SECTION A-A
@ RT. L's

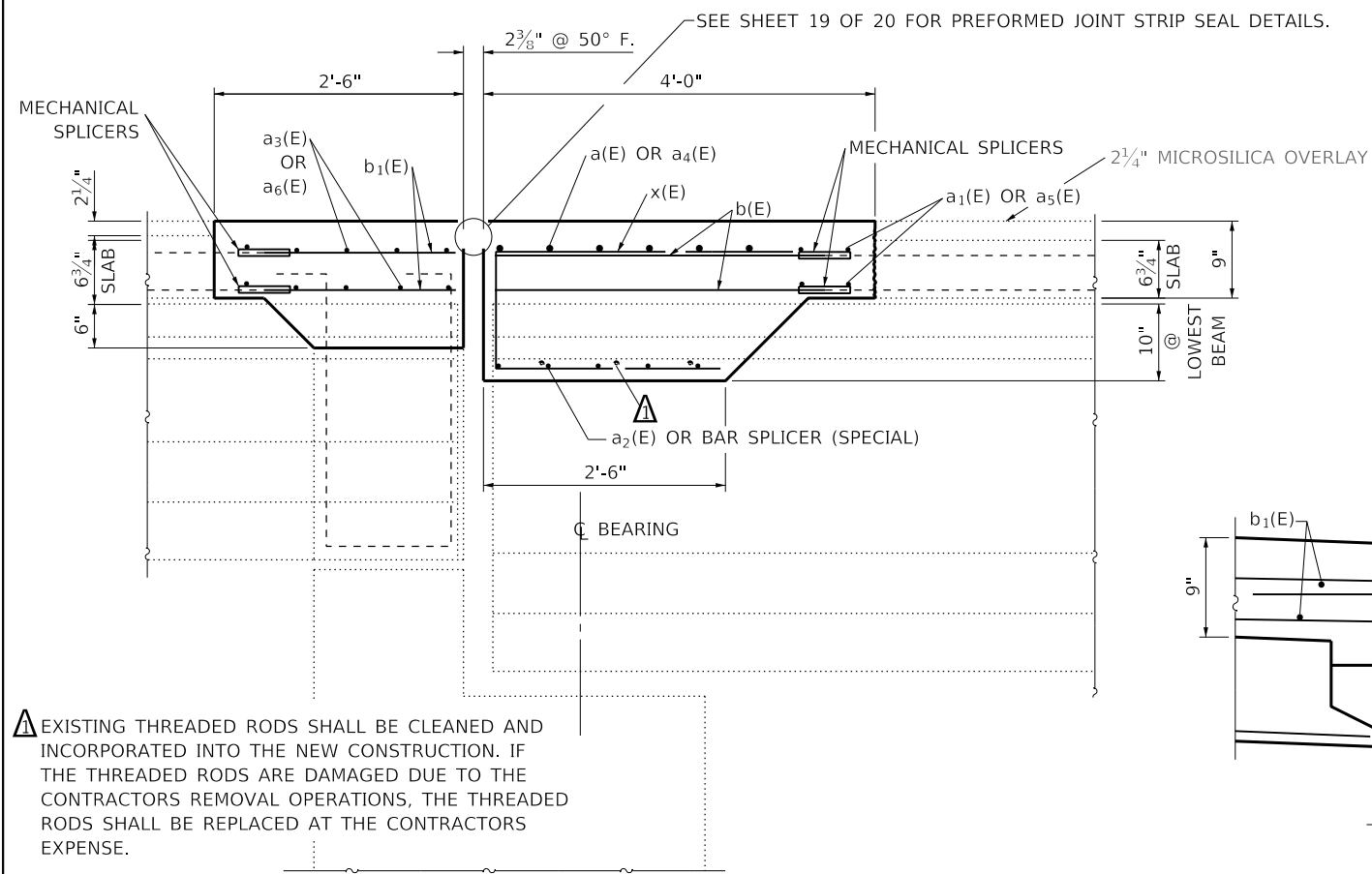


SECTION THRU PARAPET APPROACH

SECTION THRU PARAPET DECK

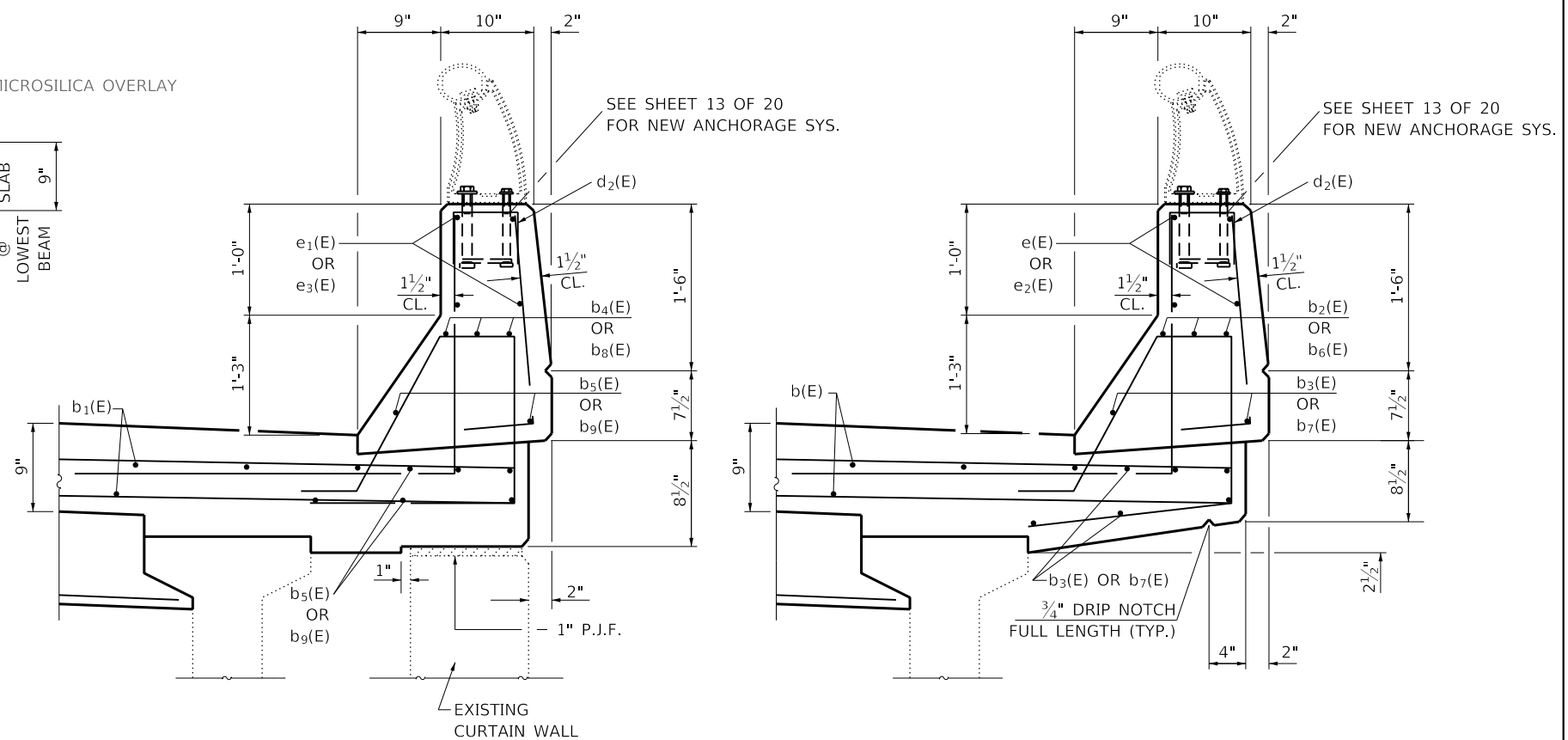
NOTE: DETAILS SHOWN ARE FOR THE NORTHBOUND STRUCTURE, THE SOUTHBOUND STRUCTURE SHALL BE SIMILAR THROUGH 180° ROTATION

FILE NAME =	USER NAME = woodyetjp	DESIGNED - RW	REVISED -	STATE OF ILLINOIS DEPARTMENT OF TRANSPORTATION	EXISTING SUPERSTRUCTURE - REMOVAL DETAILS	F.A.1 RTE.	SECTION	COUNTY	TOTAL SHEETS	SHEET NO.	
pw:\IL04EB\INTEG\ifnotes\gov\PWIDOT\Documents\DOT Offices\District 3\Projects\D366H27\CADDData\D366H27-details.dwg	DRAWN - JW	CHECKED - EP	REVISED -			180	(06-2HB)BRR	BUREAU	22	10	
PLOT SCALE = 100.0000 / in.	DATE - 01/22/2018	REVISOR -	REVISIONS -			CONTRACT NO. 66H27					
PLOT DATE = 5/2/2018						ILLINOIS FED. AID PROJECT					



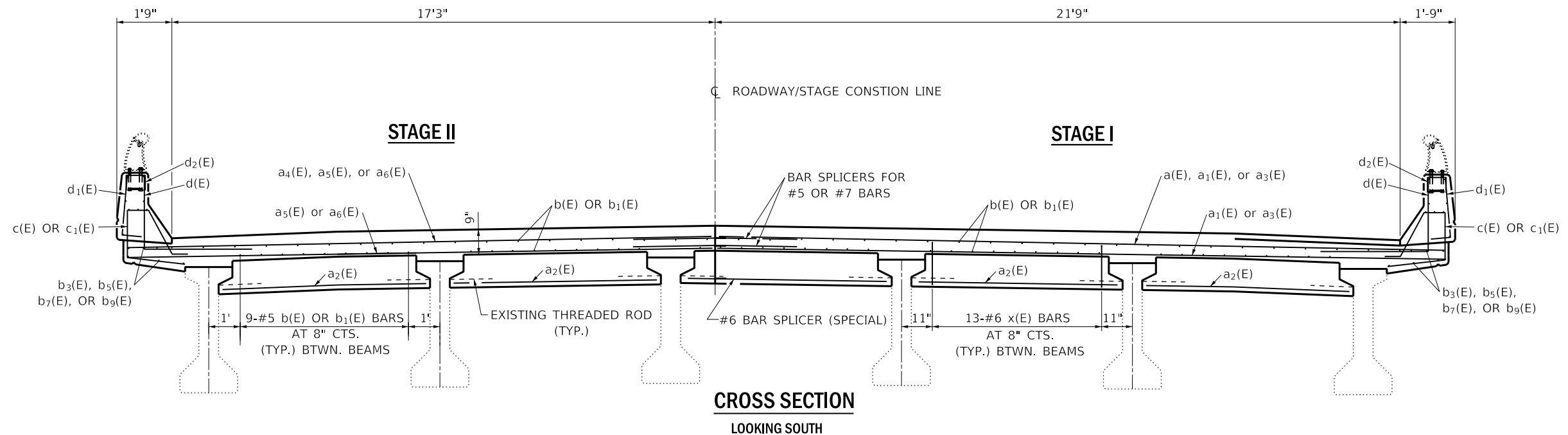
SECTION A-A
@ RT. L's

▲ EXISTING THREADED RODS SHALL BE CLEANED AND INCORPORATED INTO THE NEW CONSTRUCTION. IF THE THREADED RODS ARE DAMAGED DUE TO THE CONTRACTORS REMOVAL OPERATIONS, THE THREADED RODS SHALL BE REPLACED AT THE CONTRACTORS EXPENSE.



SECTION THRU PARAPET APPROACH

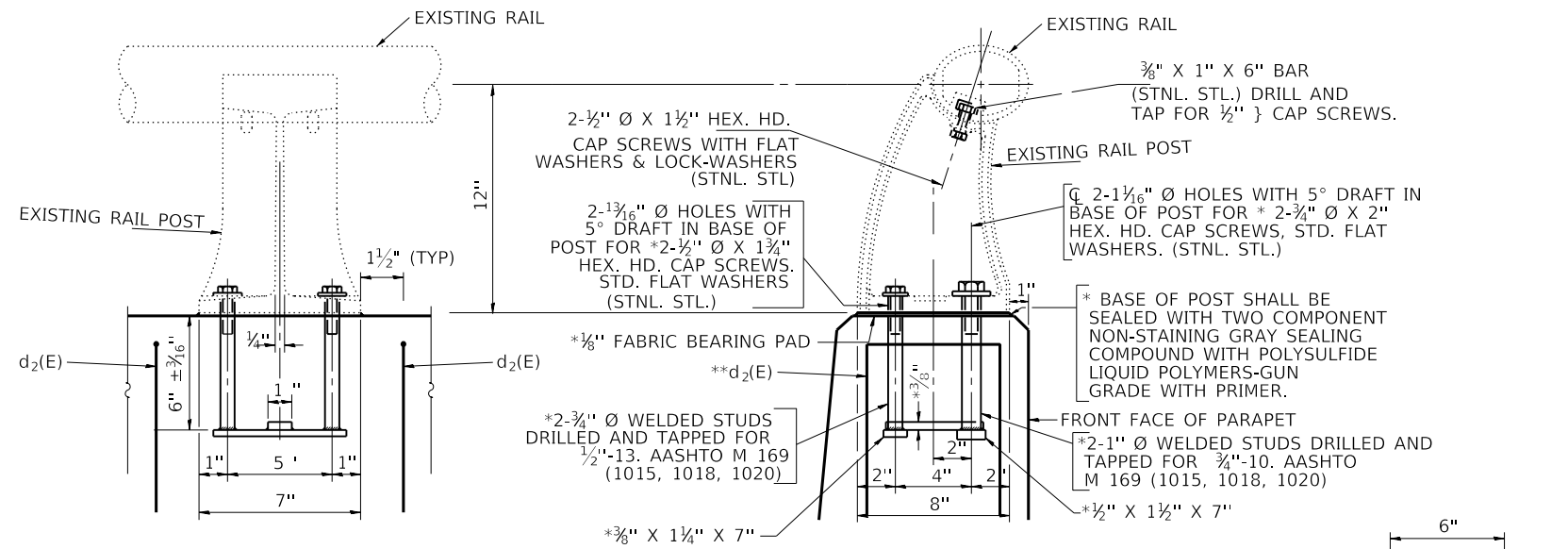
SECTION THRU PARAPET DECK



CROSS SECTION
LOOKING SOUTH

NOTE: DETAILS SHOWN ARE FOR THE NORTHBOUND STRUCTURE, THE SOUTHBOUND STRUCTURE SHALL BE SIMILAR THROUGH 180° ROTATION

FILE NAME =	USER NAME = woodyetjp	DESIGNED - RW	REVISED -	STATE OF ILLINOIS DEPARTMENT OF TRANSPORTATION	SUPERSTRUCTURE RECONSTRUCTION DETAILS	F.A.I. RTE.	SECTION	COUNTY	TOTAL SHEETS	SHEET NO.
pw:\IL084EB\INTEG\ifnotes.gov\PWIDOT\Documents\DOT Offices\District 3\Projects\D366H27\CADDData\D366H27-details\DRAWN - JW	CHECKED - EP	REVISED -	180			(06-2HB)BRR	BUREAU	22	12	
PLOT SCALE = 100.0000' / in.	DATE - 01/17/2018	REVISED -	CONTRACT NO. 66H27							
PLOT DATE = 5/2/2018	REVISED -	ILLINOIS FED. AID PROJECT								



RAIL POST ANCHORAGE SYSTEM DETAILS

* 1 EXISTING RAIL POST WITH NEW ANCHORAGE DEVICES WILL BE REQUIRED AT THE LOCATION SHOWN. COST TO BE INCLUDED IN "CONCRETE SUPERSTRUCTURE".

** TWO d₂(E) BARS PER RAIL ASSEMBLY.

CLAMP BAR

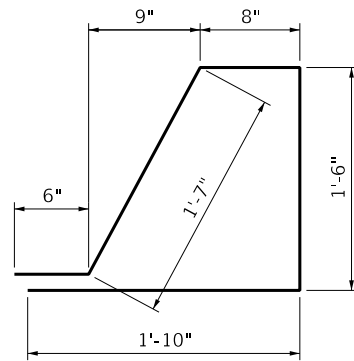
FILE NAME =	USER NAME = woodyetjp	DESIGNED - RW	REVISED -
pw:\IL084EB\INTEG\ifnotes.gov\PWIDOT\Documents\DOT Offices\District 3\Projects\D366H27\CADDData\D366H27-details	DRAWN - JW	CHECKED - EP	REVISED -
Default	PLOT SCALE = 100.0000' / in.	DATE - 01/24/2018	REVISED -
	PLOT DATE = 5/2/2018		

STATE OF ILLINOIS
DEPARTMENT OF TRANSPORTATION

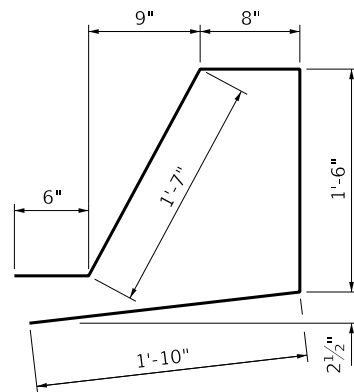
RAIL POST ANCHOR DETAILS

SCALE: SHEET 5 OF 13 SHEETS STA. TO STA.

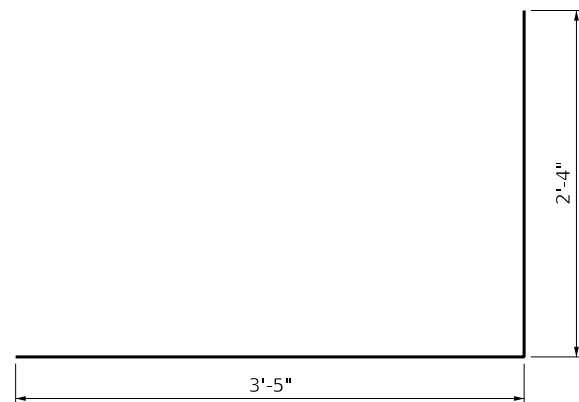
F.A.I. RTE.	SECTION	COUNTY	TOTAL SHEETS	SHEET NO.
180	(06-2HB)BRR	BUREAU	22	13
			CONTRACT NO. 66H27	
ILLINOIS FED. AID PROJECT				



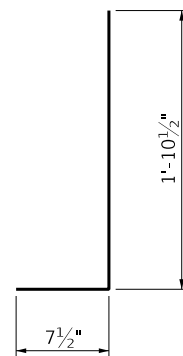
BAR c(E)



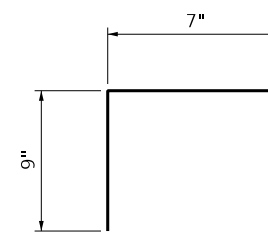
BAR c₁(E)



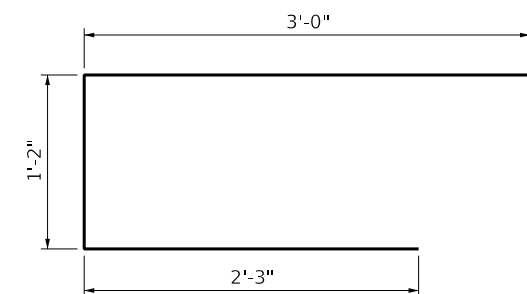
BAR d(E)



BAR d₁(E)



BAR d₂(E)



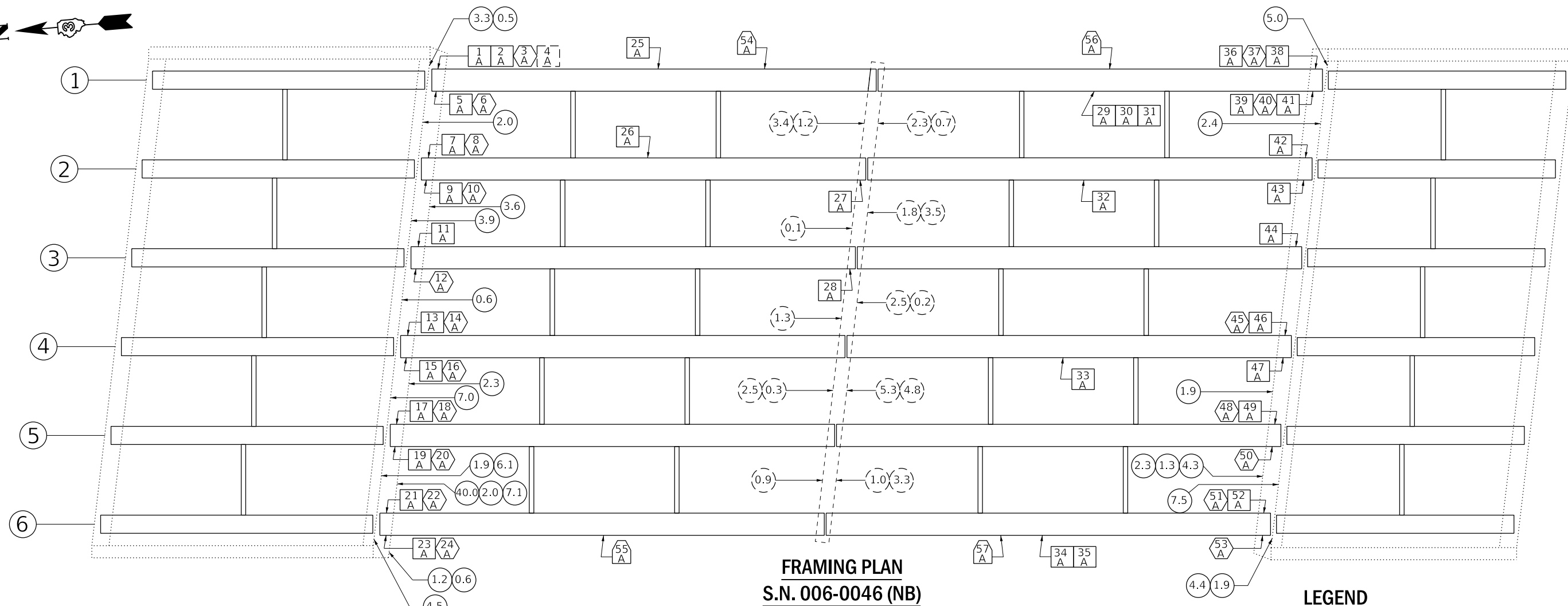
BAR x(E)

**BILL OF MATERIALS
STRUCTURE NO. 006-0046 (NB)**

BAR	NO.	SIZE	LENGTH	SHAPE	
a (E)	12	#7	23' - 9"	—————	
a1 (E)	8	#5	23' - 9"	—————	
a2 (E)	40	#6	6' - 7"	—————	
a3 (E)	20	#5	23' - 9"	—————	
a4 (E)	12	#7	19' - 2"	—————	
a5 (E)	8	#5	19' - 2"	—————	
a6 (E)	20	#5	19' - 2"	—————	
b (E)	170	#5	3' - 4"	—————	
b1 (E)	170	#5	1' - 10"	—————	
b2 (E)	6	#6	3' - 8"	—————	
b3 (E)	16	#5	3' - 8"	—————	
b4 (E)	6	#6	1' - 7"	—————	
b5 (E)	16	#5	1' - 7"	—————	
b6 (E)	6	#6	3' - 0"	—————	
b7 (E)	16	#5	3' - 0"	—————	
b8 (E)	6	#6	2' - 3"	—————	
b9 (E)	16	#5	2' - 3"	—————	
c (E)	16	#4	6' - 1"	△	
c1 (E)	20	#4	6' - 1"	△	
d (E)	32	#6	5' - 9"	┌	
d1 (E)	34	#4	2' - 6"	┌	
d2 (E)	16	#4	2' - 1"	┌	
e (E)	8	#5	3' - 8"	—————	
e1 (E)	8	#5	1' - 7"	—————	
e2 (E)	8	#5	3' - 0"	—————	
e3 (E)	8	#5	2' - 3"	—————	
x (E)	130	#6	6' - 5"	┌	
CONCRETE REMOVAL				CU YD	24.2
CONCRETE SUPERSTRUCTURE				CU YD	23.8
REINFORCEMENT BARS, EPOXY COATED				POUND	5730
PROTECTIVE COAT				SQ YD	65

**BILL OF MATERIALS
STRUCTURE NO. 006-0045 (SB)**

BAR	NO.	SIZE	LENGTH	SHAPE	
a (E)	12	#7	23' - 9"	—————	
a1 (E)	8	#5	23' - 9"	—————	
a2 (E)	40	#6	6' - 7"	—————	
a3 (E)	20	#5	23' - 9"	—————	
a4 (E)	12	#7	19' - 2"	—————	
a5 (E)	8	#5	19' - 2"	—————	
a6 (E)	20	#5	19' - 2"	—————	
b (E)	170	#5	3' - 4"	—————	
b1 (E)	170	#5	1' - 10"	—————	
b2 (E)	6	#6	3' - 8"	—————	
b3 (E)	16	#5	3' - 8"	—————	
b4 (E)	6	#6	1' - 7"	—————	
b5 (E)	16	#5	1' - 7"	—————	
b6 (E)	6	#6	3' - 0"	—————	
b7 (E)	16	#5	3' - 0"	—————	
b8 (E)	6	#6	2' - 3"	—————	
b9 (E)	16	#5	2' - 3"	—————	
c (E)	16	#4	6' - 1"	△	
c1 (E)	20	#4	6' - 1"	△	
d (E)	32	#6	5' - 9"	┌	
d1 (E)	34	#4	2' - 6"	┌	
d2 (E)	16	#4	2' - 1"	┌	
e (E)	8	#5	3' - 8"	—————	
e1 (E)	8	#5	1' - 7"	—————	
e2 (E)	8	#5	3' - 0"	—————	
e3 (E)	8	#5	2' - 3"	—————	
x (E)	130	#6	6' - 5"	┌	
CONCRETE REMOVAL				CU YD	24.2
CONCRETE SUPERSTRUCTURE				CU YD	23.8
REINFORCEMENT BARS, EPOXY COATED				POUND	5730
PROTECTIVE COAT				SQ YD	65



LEGEND

- (7.3) SQUARE FOOT OF "STRUCTURAL REPAIR OF CONCRETE (DEPTH ≤ 5)" REPAIRS ON PIERS
- (7.3) SQUARE FOOT OF "STRUCTURAL REPAIR OF CONCRETE, (DEPTH ≤ 5)" REPAIRS ON ABUTMENTS
- [1 A] "PRECAST PRESTRESSED CONCRETE I-BEAM REPAIRS" ON BEAM FLANGE (TOP)
- [1 A] "PRECAST PRESTRESSED CONCRETE I-BEAM REPAIRS" ON BEAM FLANGE (BOTTOM)
- (1 A) "PRECAST PRESTRESSED CONCRETE I-BEAM REPAIRS" ON BEAM WEB
- (1 A) ACRYLIC COATED ON ENTIRE LENGTH OF BEAM BOTTOM AND EXTERIOR FACES

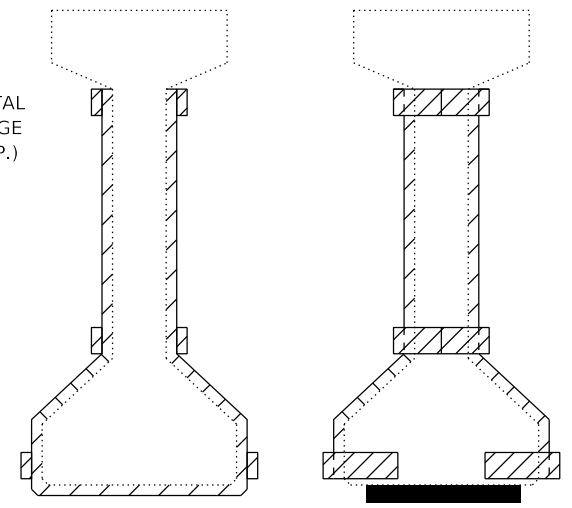
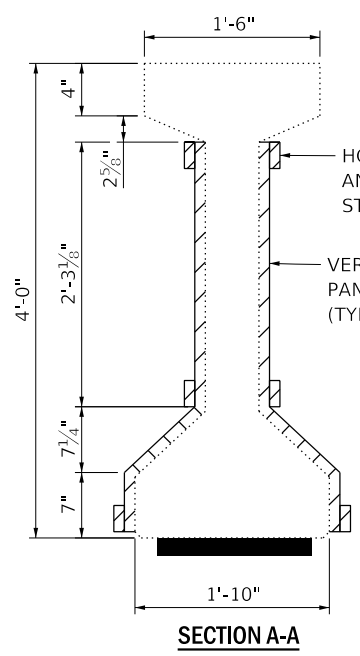
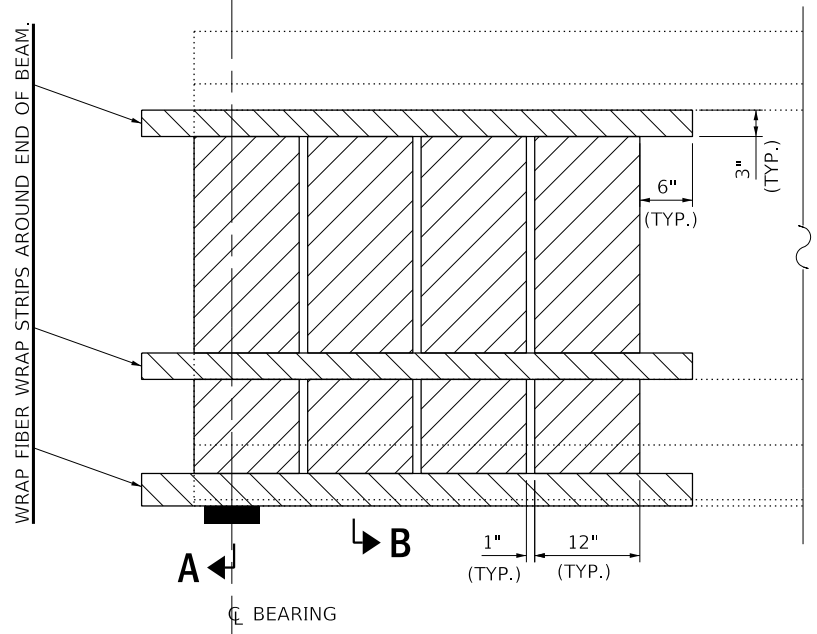
NOTE
PPC BEAM REPAIRS AND FIBER WRAP WORK SHALL BE COMPLETED PRIOR TO PLACING NEW CONCRETE AT THE EXPANSION JOINTS. ACRYLIC COATING SHALL BE APPLIED OVER FIBER WRAP REPAIRS. SEE SPECIAL PROVISION FOR "PRECAST PRESTRESSED CONCRETE I-BEAM REPAIR".

BILL OF MATERIAL
STRUCTURE NO. 006-0046 (NB)

ITEM	UNIT	TOTAL
PRECAST PRESTRESSED CONCRETE I-BEAM REPAIR	SQ FT	74.3
STRUCTURAL REPAIR OF CONCRETE (DEPTH EQUAL TO OR LESS THAN 5")	SQ FT	152.7
FIBER WRAP	SQ FT	458.2
ACRYLIC COATING	SQ YD	264

A ← → **B**

FIBER WRAP, SEE SPECIAL PROVISION FOR "FIBER WRAP FOR PPC I-BEAM REPAIRS".



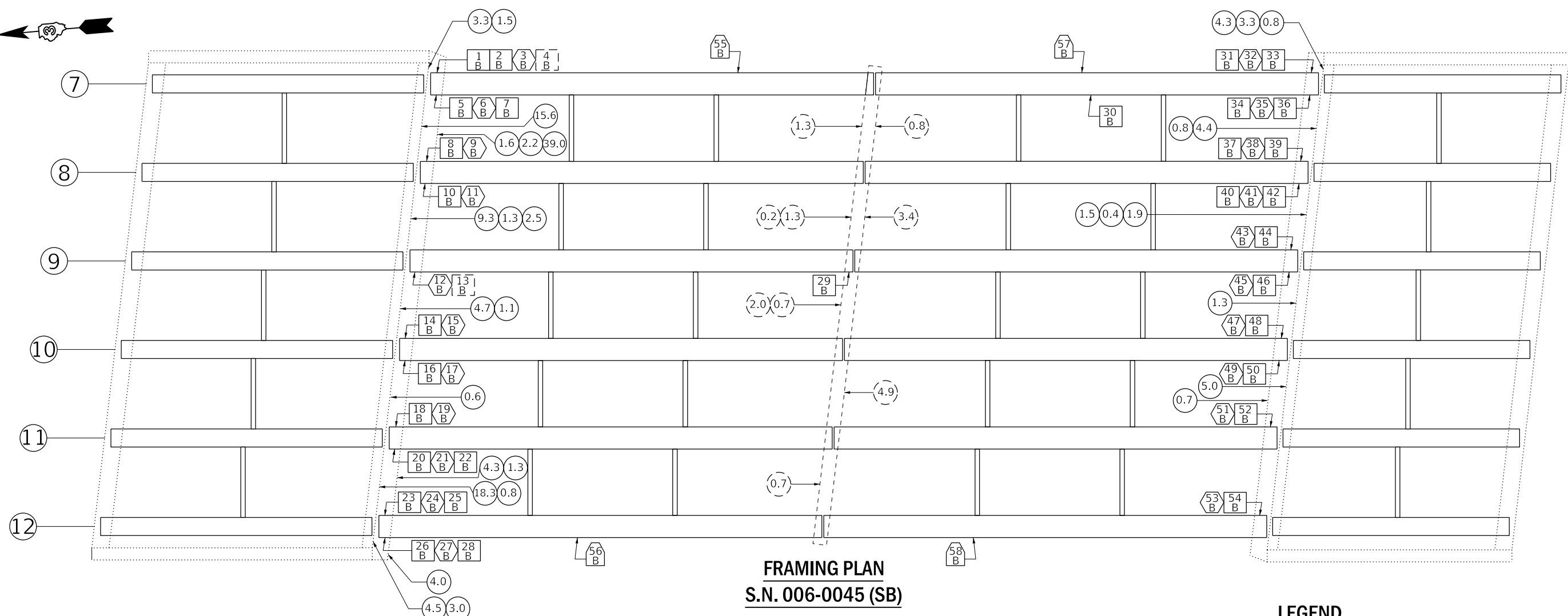
BEAM CROSS SECTION
(TYPICAL)

FILE NAME =	USER NAME = woodyetjp	DESIGNED - RW	REVISED -
pw:\IL084EB\INTEG\ifnotes.gov\PWIDOT\Documents\DOT Offices\District 3\Projects\D366H27\CADDData\D366H27-deta	DRAWN - JW	CHECKED - EP	REVISED -
Default	PLOT SCALE = 100.0000' / in.	DATE - 05/02/2018	REVISED -
	PLOT DATE = 5/4/2018		

STATE OF ILLINOIS
DEPARTMENT OF TRANSPORTATION

FRAMING PLAN			
STRUCTURE NO. 006-0046 (NB)			
SCALE:	SHEET 7	OF 13 SHEETS	STA. TO STA.

F.A.I. RTE.	SECTION	COUNTY	TOTAL SHEETS	SHEET NO.
180	(06-2HB)BRR	BUREAU	22	15
			CONTRACT NO. 66H27	
ILLINOIS FED. AID PROJECT				



FRAMING PLAN
S.N. 006-0045 (SB)

LEGEND

- (7.3) SQUARE FOOT OF "STRUCTURAL REPAIR OF CONCRETE (DEPTH ≤ 5") REPAIRS ON PIERS
- (7.3) SQUARE FOOT OF "STRUCTURAL REPAIR OF CONCRETE, (DEPTH ≤ 5)" REPAIRS ON ABUTMENTS
- [1 B] "PRECAST PRESTRESSED CONCRETE I-BEAM REPAIRS" ON BEAM FLANGE (TOP)
- [1 B] "PRECAST PRESTRESSED CONCRETE I-BEAM REPAIRS" ON BEAM FLANGE (BOTTOM)
- [1 B] "PRECAST PRESTRESSED CONCRETE I-BEAM REPAIRS" ON BEAM WEB
- [1 B] ACRYLIC COATED ON ENTIRE LENGTH OF BEAM BOTTOM AND EXTERIOR FACES

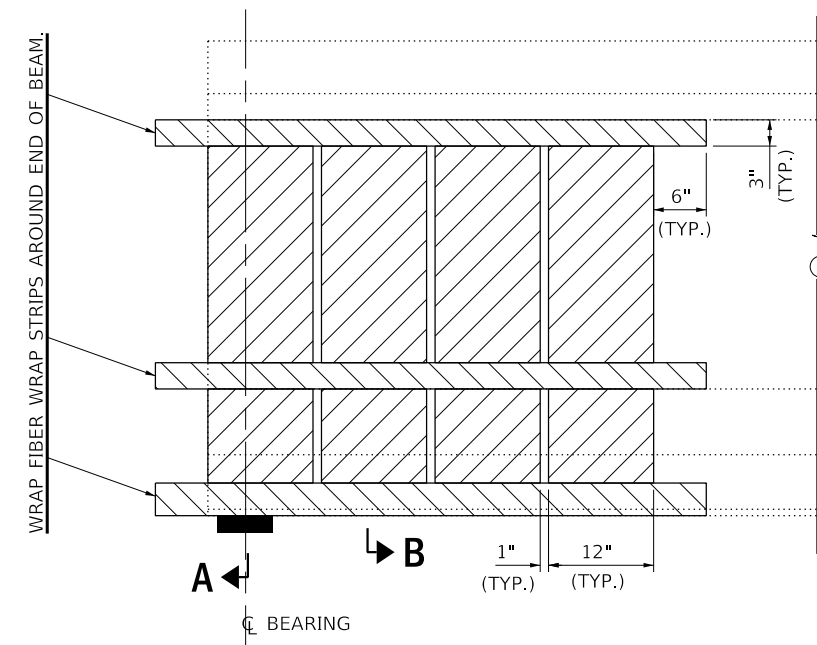
NOTE
PPC BEAM REPAIRS AND FIBER WRAP WORK SHALL BE COMPLETED PRIOR TO PLACING NEW CONCRETE AT THE EXPANSION JOINTS. ACRYLIC COATING SHALL BE APPLIED OVER FIBER WRAP REPAIRS. SEE SPECIAL PROVISION FOR "PRECAST PRESTRESSED CONCRETE I-BEAM REPAIR".

BILL OF MATERIAL
STRUCTURE NO. 006-0045 (SB)

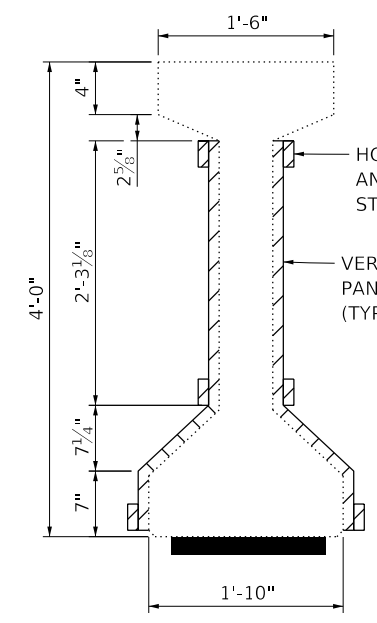
ITEM	UNIT	TOTAL
PRECAST PRESTRESSED CONCRETE I-BEAM REPAIR	SQ FT	85.4
STRUCTURAL REPAIR OF CONCRETE (DEPTH EQUAL TO OR LESS THAN 5")	SQ FT	158.6
FIBER WRAP	SQ FT	377.9
ACRYLIC COATING	SQ YD	246

A ← → B

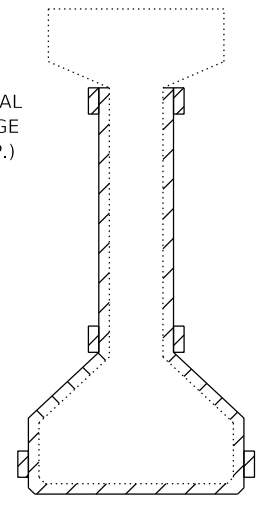
FIBER WRAP, SEE SPECIAL PROVISION FOR "FIBER WRAP FOR PPC I-BEAM REPAIRS".



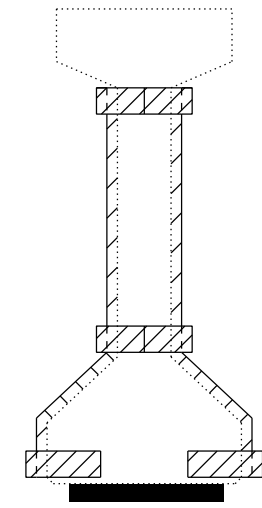
BEAM ELEVATION
(TYPICAL)



SECTION A-A



SECTION B-B



END VIEW

BEAM CROSS SECTION
(TYPICAL)

FILE NAME =	USER NAME = woodyetjp	DESIGNED - RW	REVISED -
pw:\IL084EB\INTEG\ifnotes\gov\PWIDOT\Documents\DOT\Offices\District 3\Projects\D366H27\CADDData\D366H27-details\DRAWN - JW		CHECKED - EP	REVISED -
Default	PLOT SCALE = 100.0000' / in.	DATE - 05/02/2018	REVISED -
	PLOT DATE = 5/4/2018		

STATE OF ILLINOIS
DEPARTMENT OF TRANSPORTATION

FRAMING PLAN
STRUCTURE NO. 006-0045 (SB)

SCALE: SHEET 8 OF 13 SHEETS STA. TO STA.

F.A.I. RTE.	SECTION	COUNTY	TOTAL SHEETS	SHEET NO.
180	(06-2HB)BRR	BUREAU	22	16
			CONTRACT NO. 66H27	
ILLINOIS FED. AID PROJECT				

SCHEDULE - STRUCTURE NO. 006-0046 (NB)

PRECAST PRESTRESSED CONCRETE I-BEAM REPAIR				FIBER WRAP		ACRYLIC COATING
REPAIR DIMENSIONS				SQ FT		SQ YD
NO.	LENGTH (ft)	VERTICAL (ft)	SQ FT			
1A	1.33	0.83	1.1	BEAM NO. 1	21.9	5
2A	1.50	0.83	1.2			
3A	1.25	2.17	2.7			
4A	1.00	0.50	0.5			
5A	1.50	0.58	0.9			
6A	1.83	0.83	1.5			
7A	1.42	0.83	1.2	BEAM NO. 2	21.9	5
8A	1.83	0.83	1.5			
9A	1.00	0.83	0.8			
10A	1.50	1.83	2.7	BEAM NO. 3	21.9	5
11A	1.42	0.83	1.2			
12A	1.50	1.83	2.7	BEAM NO. 4	21.9	5
13A	1.50	0.58	0.9			
14A	0.67	1.83	1.2			
15A	1.33	0.58	0.8			
16A	0.67	1.83	1.2			
17A	0.83	0.83	0.7			
18A	1.17	1.83	2.1	BEAM NO. 5	21.9	5
19A	1.33	0.58	0.8			
20A	1.33	1.83	2.4			
21A	1.42	1.33	1.9	BEAM NO. 6	21.9	5
22A	1.33	1.83	2.4			
23A	1.42	1.17	1.7			
24A	1.17	2.17	2.5			
25A	2.50	0.58	1.5			
26A	0.83	0.58	0.5			
27A	1.92	0.58	1.1	BEAM NO. 2	21.9	5
28A	0.75	2.17	1.6	BEAM NO. 2	11.6	3
29A	0.83	0.58	0.5	BEAM NO. 3	11.6	3
30A	2.00	0.58	1.2	BEAM NO. 1	42.3	9
31A	3.75	0.58	2.2	BEAM NO. 2	21.9	5
32A	1.75	0.58	1.0			
33A	1.00	0.58	0.6			
34A	1.00	0.58	0.6	BEAM NO. 4	21.9	5
35A	1.00	0.58	0.6	BEAM NO. 6	21.9	5
36A	1.80	0.83	1.5			
37A	1.17	2.17	2.5			
38A	1.67	0.58	1.0			
39A	0.67	0.83	0.6			
40A	1.83	0.83	1.5			
41A	1.50	0.50	0.8	BEAM NO. 1	21.9	5
42A	1.33	0.58	0.8			
43A	1.33	0.58	0.8			
44A	1.33	0.58	0.8	BEAM NO. 2	21.9	5
45A	1.33	1.83	2.4	BEAM NO. 3	21.9	5
46A	1.33	0.58	0.8	BEAM NO. 4	21.9	5
47A	1.33	0.58	0.8			
48A	1.50	0.58	0.9			
49A	1.25	1.83	2.3	BEAM NO. 5	21.9	5
50A	1.00	1.83	1.8			
51A	1.00	1.83	1.8			
52A	1.50	0.58	0.9			
53A	2.00	2.17	4.3			
54A						
55A				BEAM NO. 1		40
56A				BEAM NO. 6		40
57A				BEAM NO. 1		40
58A				BEAM NO. 6		40
TOTAL			74.3	458.2		264

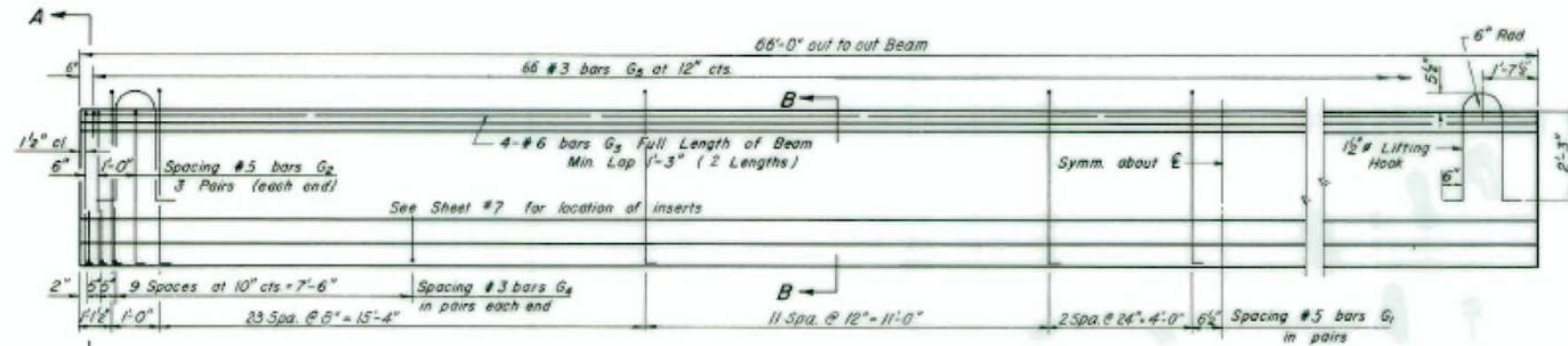
ACRYLIC COATING QUANTITY BASED ON "TWO" COATS ON FIBER WRAP AND ONE COAT (THE ENTIRE LENGTH OF BEAM) ON THE EXTERIOR FACE AND BOTTOM FACE OF FACIA BEAMS.

SCHEDULE - STRUCTURE NO. 006-0045 (SB)

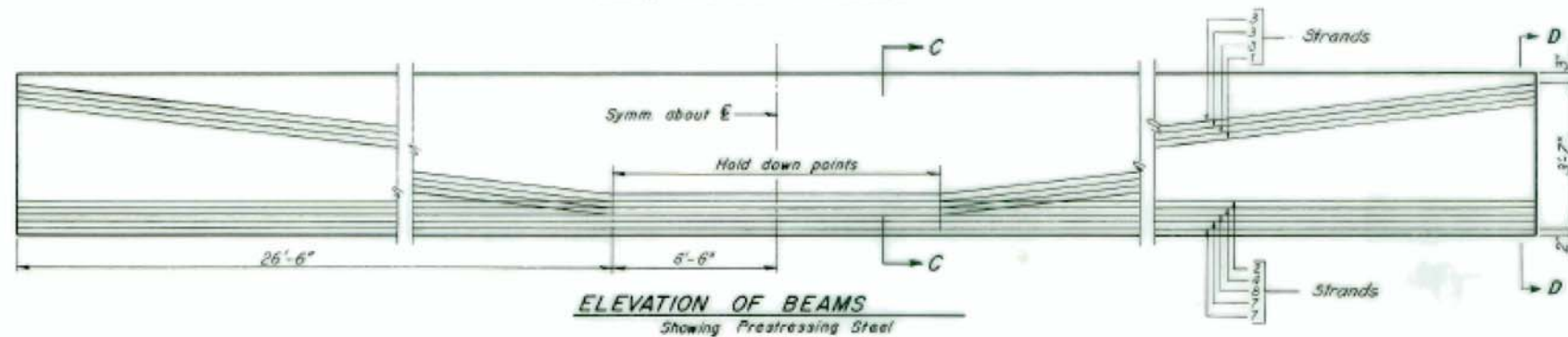
PRECAST PRESTRESSED CONCRETE I-BEAM REPAIR				FIBER WRAP		ACRYLIC COATING
REPAIR DIMENSIONS				SQ FT		SQ YD
NO.	LENGTH (ft)	VERTICAL (ft)	SQ FT			
1B	2.00	1.42	2.8	BEAM NO. 7	103.6	23
2B	10.00	1.83	18.3			
3B	2.00	2.17	4.3			
4B	0.83	0.83	0.7			
5B	0.67	0.83	0.6			
6B	1.17	1.83	2.1			
7B	1.67	0.58	1.0	BEAM NO. 8	21.9	5
8B	0.50	1.83	0.9			
9B	1.08	0.83	0.9			
10B	0.50	0.83	0.4	BEAM NO. 9	11.6	3
11B	1.00	1.83	1.8			
12B	0.50	1.83	0.9	BEAM NO. 10	21.9	5
13B	0.50	0.83	0.4			
14B	1.08	0.58	0.6			
15B	1.00	1.83	1.8			
16B	1.17	0.58	0.7			
17B	0.67	1.83	1.2			
18B	0.83	1.83	1.5	BEAM NO. 11	21.9	5
19B	1.00	0.58	0.6			
20B	0.83	0.83	0.7			
21B	0.67	1.83	1.2	BEAM NO. 12	21.9	5
22B	1.50	0.58	0.9			
23B	1.00	0.83	0.8			
24B	1.00	1.83	1.8			
25B	1.33	0.58	0.8			
26B	1.00	0.83	0.8			
27B	0.83	2.17	1.8	BEAM NO. 9	11.6	3
28B	1.50	0.58	0.9			
29B	0.67	0.83	0.6			
30B	1.25	0.58	0.7	BEAM NO. 7	21.9	5
31B	1.42	0.58	0.8	BEAM NO. 7	21.9	5
32B	2.17	0.83	1.8			
33B	1.08	0.83	0.9			
34B	1.08	0.83	0.9			
35B	2.00	0.83	1.7			
36B	1.83	0.58	1.1			
37B	1.17	0.83	1.0	BEAM NO. 8	21.9	5
38B	1.00	2.00	2.0			
39B	1.80	0.58	1.0			
40B	1.33	0.83	1.1	BEAM NO. 9	21.9	5
41B	0.67	2.00	1.3			
42B	1.83	0.58	1.1			
43B	0.67	2.00	1.3			
44B	1.33	0.58	0.8			
45B	1.00	2.00	2.0			
46B	1.33	0.58	0.8	BEAM NO. 10	32.1	7
47B	1.00	2.00	2.0			
48B	1.42	0.58	0.8			
49B	2.00	2.00	4.0	BEAM NO. 11	21.9	5
50B	1.50	0.58	0.9			
51B	1.00	2.00	2.0			
52B	1.33	0.58	0.8			
53B	1.00	2.00	2.0			
54B	1.33	0.58	0.8			
55B				BEAM NO. 7		40
56B				BEAM NO. 12		40
57B				BEAM NO. 7		40
58B				BEAM NO. 12		40
TOTAL			85.4	377.9		246

ACRYLIC COATING QUANTITY BASED ON "TWO" COATS ON FIBER WRAP AND ONE COAT (THE ENTIRE LENGTH OF BEAM) ON THE EXTERIOR FACE AND BOTTOM FACE OF FACIA BEAMS.

ROUTE NO.	SECTION	COUNTY	TOTAL SHEETS	SHEET NO.
F.A.I.-180	06-2HB	BUREAU		90
FED. ROAD DIV. NO. 4		ILLINOIS	PROJECT	



ELEVATION OF BEAMS
Showing Reinforcement & Dimensions



ELEVATION OF BEAMS
Showing Prestressing Steel

NOTE: An alternate prestressing strand pattern using Extra High Strength Strand (270 Ksi) is permitted. See Special Provisions.

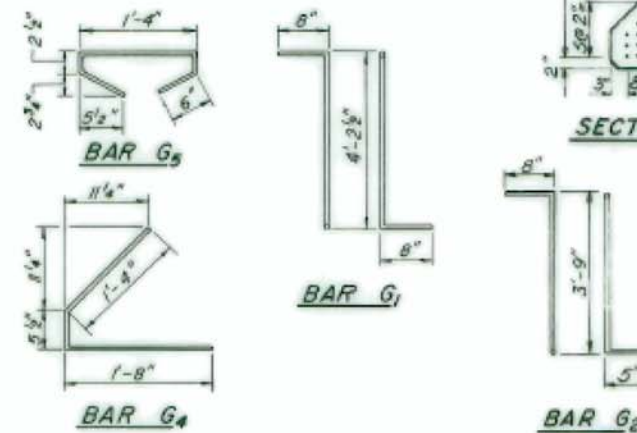
STRESS TABLE

	TABLE OF MOMENTS AND SHEARS (INTERIOR BEAMS)							
	SPAN #1		SPAN #2 & #3				SPAN #4	
	Moments (Ft.-K)	Shears (Kips)	Moments (Ft.-K)	Shears (Kips)	Moments (Ft.-K)	Shears (Kips)	Moments (Ft.-K)	Shears (Kips)
Dead Load	232	21.1	733	-	44.3	44.3	185	18.7
Superimposed Dead Load	60	6.1	164	164	7.6	12.6	48	5.5
Live Load	292	36.6	597	375	39.5	43.1	248	35.2
Impact	58	11.0	158	99	10.5	11.4	74	10.5
Total	672	74.8	1652	638	101.9	111.4	555	69.9

Cut 8 strands in bottom rows with a 12" projection at ends of all beams over piers. Shop bend.



DETAIL AT END OF BEAMS OVER PIERS



***BAR LIST**

Bar No	Size	Length	Shape
G1	#5	5'-6 1/2"	TL
G2	#5	4'-10"	TL
G3	#6	33'-0"	-
G4	#3	3'-5 1/2"	L
G5	#3	2'-9"	O

*For one beam only

BILL OF MATERIAL

Item	Unit	Total
Furnishing & Erecting Precast Prestressed Concrete I-Beams, 48"	Lin Ft	1584

NOTES

All inserts and threaded rods for inserts, reinforcing and Prestressing Steel, and other items which are cast into the Precast Concrete I-Beams shall be included in the contract unit price per linear foot of "Furnishing And Erecting Precast Prestressed Concrete I-Beams, 48 In". See Supplemental Specifications for additional information regarding materials, Prestressing equipment, construction and handling methods and other requirements for Precast Prestressed Concrete I-Beams. Prestressing Steel shall have a nominal diameter of 1/8". Inserts for 3/4" threaded rods are to be two strut, coil type for interior I-Beams and single coil, flared loop type for exterior I-Beams. Steel for lifting hooks shall be non-deformed bars of structural or intermediate grade billet steel. Ends of beams to be encased with cast in place concrete shall not be coated with asphalt paint.

APPROVED
FOR ENGINEERING AGENCY ONLY
7-6-67

DESIGNED BY: S.F.
DRAWN BY: L.S.
CHECKED BY: S.F.
APPROVED BY: K.A.

FOR INFORMATION ONLY

BRIDGE NO. 1

STATE OF ILLINOIS
DEPARTMENT OF PUBLIC WORKS & BLDGS.
DIVISION OF HIGHWAYS

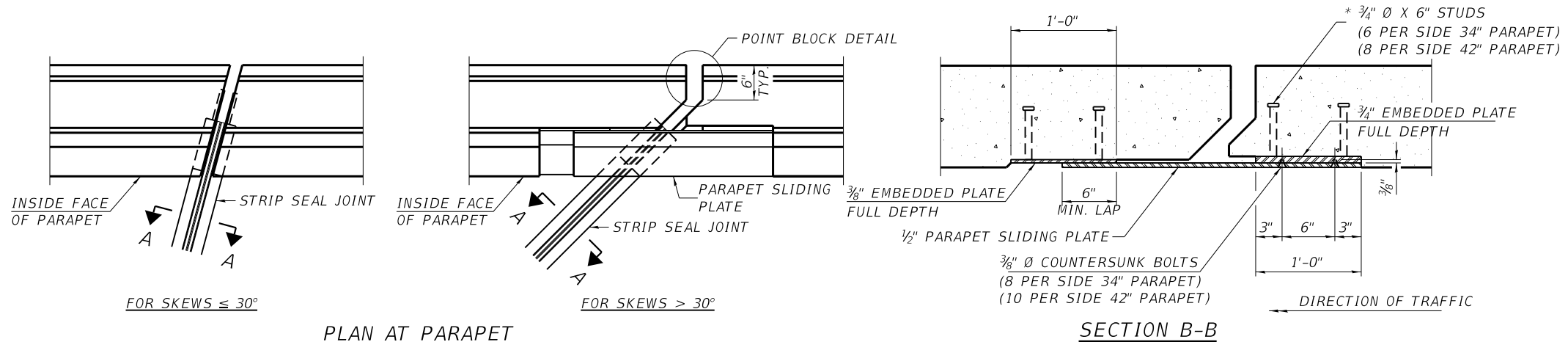
PRESTRESSED BEAM DETAILS
SPANS 2 AND 3

F.A.I. ROUTE 180
OVER ILLINOIS ROUTE 26

STATION 460+00.00
F.A.I. RT.180 BUREAU COUNTY SECTION 06-2HB

H.W. LOCHNER, INC.
ENGINEERS
CHICAGO, ILLINOIS

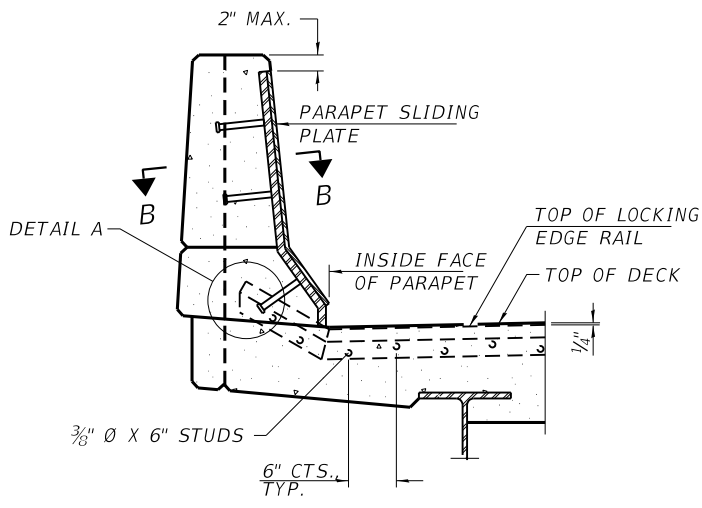
SHEET NO. 9 OF 23



PLAN AT PARAPET

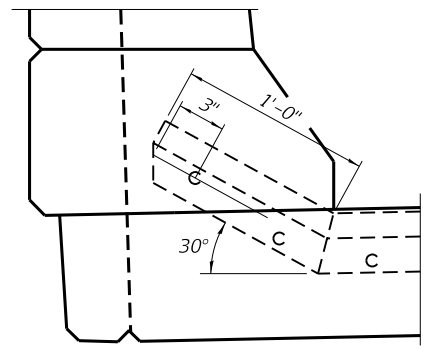
SECTION B-B

NOTES:
 THE STRIP SEAL SHALL BE MADE CONTINUOUS AND SHALL HAVE A MINIMUM THICKNESS OF 1/4". THE CONFIGURATION OF THE STRIP SEAL SHALL MATCH THE CONFIGURATION OF THE LOCKING EDGE RAILS. OPEN OR "WEBBED" STRIP SEAL GLAND CONFIGURATIONS ARE NOT PERMITTED. THE GLAND SHALL BE SIZED FOR A MAXIMUM RATED MOVEMENT OF 4 INCHES.
 THE LOCKING EDGE RAILS DEPICTED ARE CONFIGURED FOR TYPICAL APPLICATIONS AND ARE CONCEPTUAL ONLY. THE ACTUAL CONFIGURATION OF THE LOCKING EDGE RAILS AND MATCHING STRIP SEAL MAY VARY FROM MANUFACTURER TO MANUFACTURER PROVIDED THEY FIT THE APPLICATION AND MEET THE MINIMUM ANCHORAGE SHOWN. FLANGED EDGE RAILS, HOWEVER, WILL NOT BE ALLOWED. LOCKING EDGE RAILS MAY EXCEED THE 4 1/2" MAXIMUM DEPTH PROVIDED THE ANCHORAGE SYSTEM IS REVISED ACCORDING TO THE MANUFACTURER'S RECOMMENDATION.
 THE MANUFACTURER'S RECOMMENDED INSTALLATION METHODS SHALL BE FOLLOWED.
 ALL STEEL COMPONENTS SHALL BE GALVANIZED AFTER FABRICATION ACCORDING TO ARTICLE 520.03 OF THE STANDARD SPECIFICATIONS.
 THE MAXIMUM SPACE BETWEEN LOCKING EDGE RAIL SEGMENTS SHALL BE 1/16" AND SEALED WITH A SUITABLE SEALANT; HOWEVER, ANY RAIL JOINT WITHIN 10' MEASURED PERPENDICULAR TO THE FACE OF THE CURB OR PARAPET SHALL BE WELDED AS SHOWN IN THE LOCKING EDGE RAIL SPLICE DETAIL.
 COST OF PARAPET SLIDING PLATES, EMBEDDED PLATES, AND ANCHORAGE STUDS INCLUDED WITH PREFORMED JOINT STRIP SEAL. 34" F-SHAPE BARRIER SHOWN, 42" F-SHAPE SIMILAR AS NOTED.
 THE CONCRETE OPENING BELOW THE STRIP SEAL WILL VARY BASED ON THE LOCKING EDGE RAIL CHOSEN BY THE CONTRACTOR. DECK AND PARAPET LENGTHS SHOWN ELSEWHERE IN THE PLANS ARE DIMENSIONED TO THE CONCRETE OPENING, NOT THE JOINT OPENING, AND ARE BASED ON THE ROLLED LOCKING EDGE RAIL. IF THE CONTRACTOR ELECTS TO USE A DIFFERENT LOCKING EDGE RAIL, DIMENSIONAL ADJUSTMENTS MAY BE REQUIRED. ONE EXCEPTION TO THIS WOULD BE THE STRIP SEAL JOINT AT THE END OF THE PRECAST BRIDGE APPROACH SLAB. FOR THESE CASES THE PAVEMENT CONNECTOR LENGTH SHALL BE ADJUSTED, NOT THE LENGTH OF THE BRIDGE APPROACH SLAB.

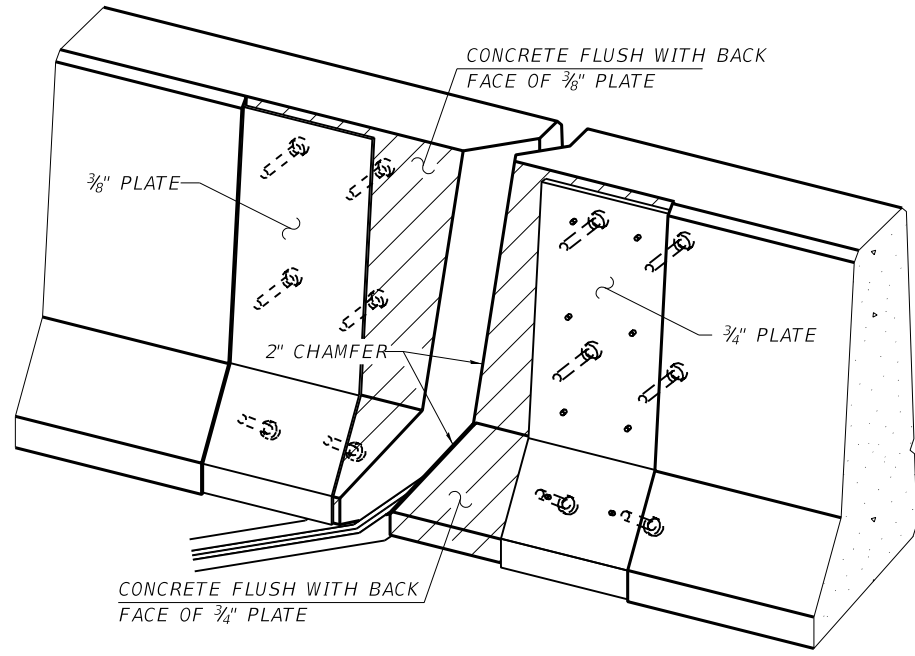


ELEVATION AT PARAPET

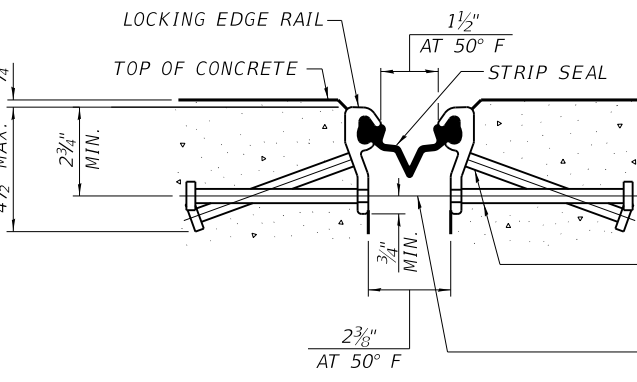
(SKEWS > 30° SHOWN. SKEWS <= 30° SIMILAR EXCEPT AS SHOWN IN PLAN VIEW.)



DETAIL A



TRIMETRIC VIEW (SHOWING EMBEDDED PLATES ONLY)

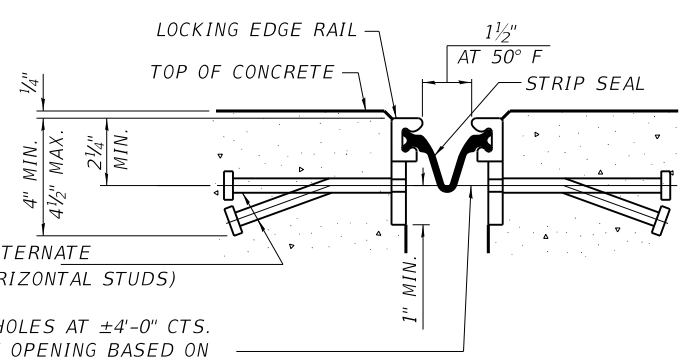


SHOWING ROLLED RAIL JOINT

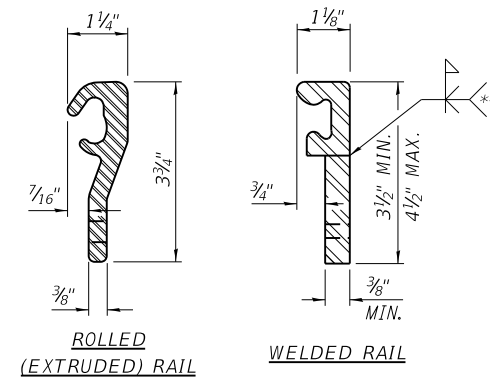
* 5/8" Ø X 6" STUDS @ 6" CTS. (ALTERNATE ANGLED/BENT STUDS WITH HORIZONTAL STUDS)
 * 3/8" Ø THREADED RODS IN 7/16" Ø HOLES AT ±4'-0" CTS. FOR HOLDING THE PROPER JOINT OPENING BASED ON THE TEMPERATURE DURING THE DECK POUR. PLACE TO MISS STUDS. ALL RODS SHALL BE BURNED, OR SAWED OFF FLUSH WITH THE PLATES AFTER CONCRETE IS SET.

SECTION A-A

* GRANULAR OR SOLID FLUX FILLED HEADED STUDS CONFORMING TO ARTICLE 1006.32 OF THE STD. SPECS., AUTOMATICALLY END WELDED.

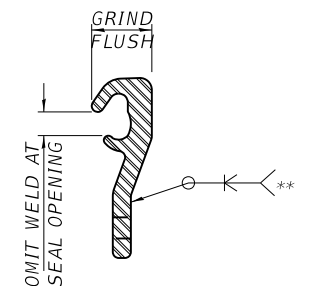


SHOWING WELDED RAIL JOINT



LOCKING EDGE RAILS

** BACK GOUGE NOT REQUIRED IF COMPLETE JOINT PENETRATION IS VERIFIED BY MOCK-UP.



LOCKING EDGE RAIL SPLICE

THE INSIDE OF THE LOCKING EDGE RAIL GROOVE SHALL BE FREE OF WELD RESIDUE. ROLLED RAIL SHOWN, WELDED RAIL SIMILAR.

BILL OF MATERIAL
 STRUCTURE NO. 032-0083 (NB)

ITEM	UNIT	TOTAL
PREFORMED JOINT STRIP SEAL	FOOT	84

BILL OF MATERIAL
 STRUCTURE NO. 032-0082 (SB)

ITEM	UNIT	TOTAL
PREFORMED JOINT STRIP SEAL	FOOT	84

EJ-SS

8-11-17

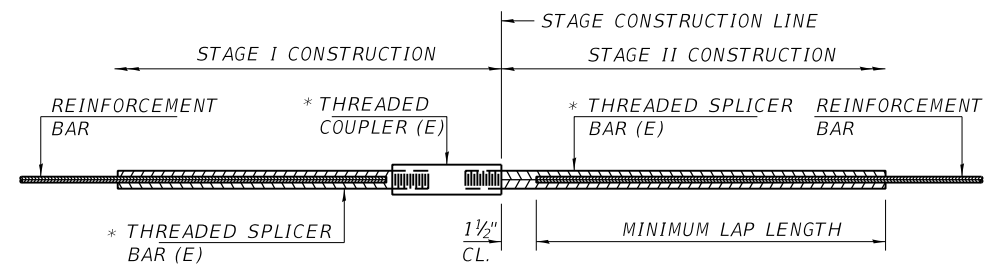
FILE NAME =	USER NAME = woodyetjp	DESIGNED - RW	REVISED -
pw:\IL084EB\INTEG\ifnotes\gov\PWIDOT\Documents\DOT Offices\District 3\Projects\D366H27\CADDData\D366H27-details\BR	DRAWN - JW	CHECKED - EP	REVISED -
PLOT SCALE = 100.0000 / in.	DATE - 01/18/2018	REVISED -	
Default	PLOT DATE = 5/2/2018		

STATE OF ILLINOIS
 DEPARTMENT OF TRANSPORTATION

PREFORMED JOINT STRIP SEAL

SCALE: SHEET 12 OF 13 SHEETS STA. TO STA.

F.A.I. RTE.	SECTION	COUNTY	TOTAL SHEETS	SHEET NO.
180	(06-2HB)BRR	BUREAU	22	20
			CONTRACT NO. 66H27	
		ILLINOIS	FED. AID PROJECT	



STANDARD BAR SPLICER ASSEMBLY

THREADED SPLICER BAR LENGTH = MIN. LAP LENGTH + 1 1/2" + THREAD LENGTH

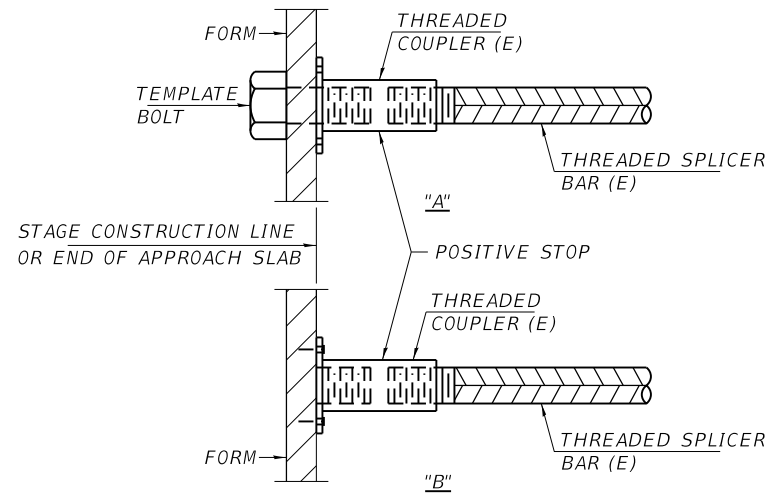
* EPOXY NOT REQUIRED ON BAR SPLICER ASSEMBLY COMPONENTS USED IN CONJUNCTION WITH BLACK BARS.

**BILL OF MATERIAL
STRUCTURE NO. 006-0046 (NB)**

LOCATION	BAR SIZE	NO. ASSEMBLIES REQUIRED	MINIMUM LAP LENGTH
NORTH END DECK	#5	14	3'-0"
	#7	6	4'-2"
SOUTH END DECK	#5	14	3'-0"
	#7	6	4'-2"
TOTAL		40	

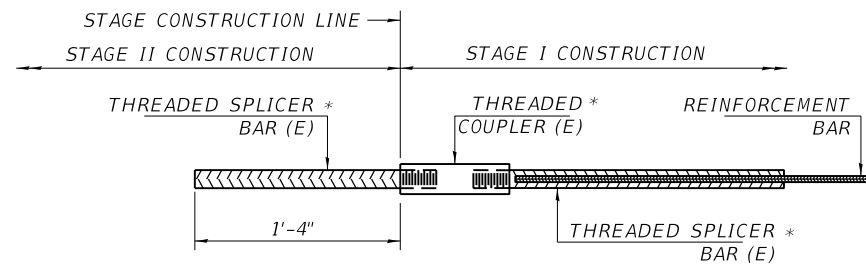
**BILL OF MATERIAL
STRUCTURE NO. 006-0045 (SB)**

LOCATION	BAR SIZE	NO. ASSEMBLIES REQUIRED	MINIMUM LAP LENGTH
NORTH END DECK	#5	14	3'-0"
	#7	6	4'-2"
SOUTH END DECK	#5	14	3'-0"
	#7	6	4'-2"
TOTAL		40	



INSTALLATION AND SETTING METHODS

"A" : SET BAR SPLICER ASSEMBLY BY MEANS OF A TEMPLATE BOLT.
 "B" : SET BAR SPLICER ASSEMBLY BY NAILING TO WOOD FORMS OR CEMENTING TO STEEL FORMS.
 (E) : INDICATES EPOXY COATING.



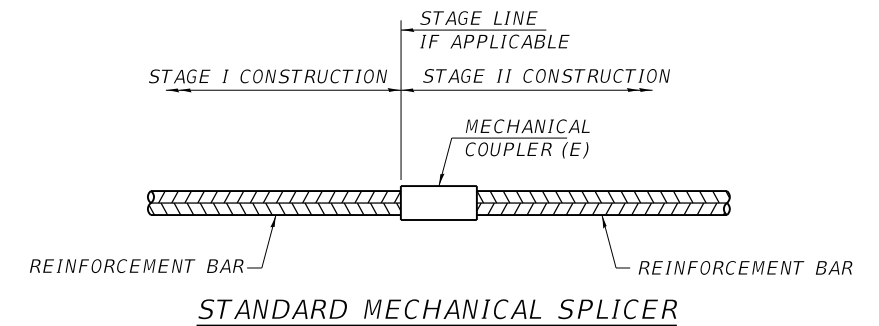
BAR SPLICER ASSEMBLY (SPECIAL)

**BILL OF MATERIAL
STRUCTURE NO. 006-0046 (NB)**

LOCATION	BAR SIZE	NO. ASSEMBLIES REQUIRED
N. END DECK	#6	5
S. END DECK	#6	5
TOTAL		10

**BILL OF MATERIAL
STRUCTURE NO. 006-0045 (SB)**

LOCATION	BAR SIZE	NO. ASSEMBLIES REQUIRED
N. END DECK	#6	5
S. END DECK	#6	5
TOTAL		10



**BILL OF MATERIAL
STRUCTURE NO. 006-0046 (NB)**

LOCATION	BAR SIZE	NO. ASSEMBLIES REQUIRED
NORTH END APPROACH SLAB	#5	97
NORTH END PARAPET	#6	3
	#5	6
NORTH END PARAPET	#6	3
	#5	6
NORTH END DECK SLAB	#5	97
NORTH END PARAPET	#6	3
	#5	6
NORTH END PARAPET	#6	3
	#5	6
SOUTH END APPROACH SLAB	#5	97
SOUTH END PARAPET	#6	3
	#5	6
SOUTH END PARAPET	#6	3
	#5	6
SOUTH END DECK SLAB	#5	97
SOUTH END PARAPET	#6	3
	#5	6
SOUTH END PARAPET	#6	3
	#5	6
SUBTOTAL		412
TOTAL		460

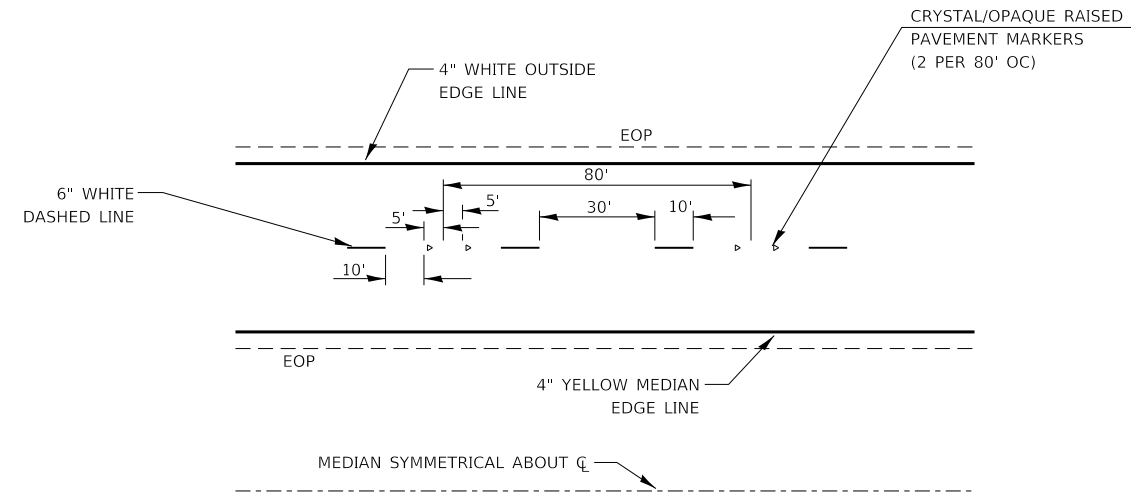
**BILL OF MATERIAL
STRUCTURE NO. 006-0045 (SB)**

LOCATION	BAR SIZE	NO. ASSEMBLIES REQUIRED
NORTH END APPROACH SLAB	#5	97
NORTH END PARAPET	#6	3
	#5	6
NORTH END PARAPET	#6	3
	#5	6
NORTH END DECK SLAB	#5	97
NORTH END PARAPET	#6	3
	#5	6
NORTH END PARAPET	#6	3
	#5	6
SOUTH END APPROACH SLAB	#5	97
SOUTH END PARAPET	#6	3
	#5	6
SOUTH END PARAPET	#6	3
	#5	6
SOUTH END DECK SLAB	#5	97
SOUTH END PARAPET	#6	3
	#5	6
SOUTH END PARAPET	#6	3
	#5	6
SUBTOTAL		412
TOTAL		460

NOTES

SPLICER BARS SHALL BE DEFORMED WITH THREADED ENDS AND HAVE A MINIMUM 60 KSI YIELD STRENGTH.
 ALL REINFORCEMENT SHALL BE LAPPED AND TIED TO THE SPLICER BARS.
 BAR SPLICER ASSEMBLIES SHALL BE EPOXY COATED ACCORDING TO THE REQUIREMENTS FOR REINFORCEMENT BARS. SEE SECTION 508 OF THE STANDARD SPECIFICATIONS.
 SEE APPROVED LIST OF BAR SPLICER ASSEMBLIES AND MECHANICAL SPLICERS FOR ALTERNATIVES.

BSD-1 2-17-2017



TYPICAL PAVEMENT MARKINGS

FILE NAME =	USER NAME = woodyetjp	DESIGNED - RW	REVISED -
pw:\IL084EBID\INTEG\ifnotes.gov\PWIDOT\Documents\DOT Offices\District 3\Projects\D366H27\CADDData\D366H27-details	DRAWN - RW	CHECKED - EP	REVISED -
Default	PLOT SCALE = 100.0000' / in.	DATE - 2/14/2018	REVISED -
	PLOT DATE = 5/2/2018		

**STATE OF ILLINOIS
DEPARTMENT OF TRANSPORTATION**

DETAILS			
SCALE:	SHEET 1	OF 1	SHEETS
	STA.	TO STA.	

F.A.I. RTE.	SECTION	COUNTY	TOTAL SHEETS	SHEET NO.
180	(06-2HB)BRR	BUREAU	22	22
			CONTRACT NO. 66H27	
		ILLINOIS	FED. AID PROJECT	