

SUMMARY OF QUANTITIES

KNOX COUNTY

CONST. TYPE
CODE 0021
100% STATE
OVERHEAD LIGHTING
RURAL

CODE	ITEM DESCRIPTION	UNIT	TOTAL QTY.	
67100100	MOBILIZATION	LSUM	1.0	1.0
70102640	TRAFFIC CONTROL AND PROTECTION, STANDARD 701801	L SUM	1.0	1.0
81028350	UNDERGROUND CONDUIT, PVC, 2" DIA.	FOOT	77.0	77.0 [△]
81603010	UNIT DUCT, 600V, 2-1C NO.10, 1/C NO.10 GROUND, (XLP-TYPE USE), 3/4" DIA. POLYETHYLENE	FOOT	653.0	653.0
X0324390	FLOOD LIGHTING UNIT	EACH	2.0	2.0 [△]
X0325541	REMOVE EXISTING LIGHTING SYSTEM	L SUM	1.0	1.0
X0327739	MISCELLANEOUS ELECTRICAL WORK	L SUM	1.0	1.0
X1400212	LUMINAIRE, LED, HORIZONTAL MOUNT, VERY LOW WATTAGE	EACH	11.0	11.0
X8250505	LIGHTING CONTROLLER, SPECIAL	EACH	2.0	2.0
X8300001	LIGHT POLE, SPECIAL	EACH	11.0	11.0
X8360120	LIGHT POLE FOUNDATION, SPECIAL	EACH	11.0	11.0

10

FILE NAME *	USER NAME * hansonlj	DESIGNED -	REVISED -	STATE OF ILLINOIS DEPARTMENT OF TRANSPORTATION	SUMMARY OF QUANTITIES	F.A.I. RTE.	SECTION	COUNTY	TOTAL SHEETS	SHEET NO.
D:\common\GEN\Transfer - bureau\68E46	Final Plans\68E46 - Spoon River Rest Area	DRAMW (Final) 5-10-18\logn	REVISED -			74	4B-29RAIL-1)	KNOX	17	3
PLOT SCALE * 1/4" = 20'		CHECKED -	REVISED -		SCALE: _____					
PLOT DATE * 5/18/2018		DATE -	REVISED -		STA. _____ TO STA. _____					
										ILLINOIS FED. AID PROJECT CONTRACT NO. 68E46

SCHEDULE OF QUANTITIES

ITEM DESCRIPTION	UNIT	TOTAL QTY.	I-74 EB @ SPOON RIVER REST AREA	I-74 WB @ SPOON RIVER REST AREA
MOBILIZATION	L SUM	1.0	0.50	0.50
TRAFFIC CONTROL AND PROTECTION, STANDARD 701801	L SUM	1.0	0.50	0.50
UNDERGROUND CONDUIT, PVC, 2" DIA.	FOOT	77.0	32.0	45.0
UNIT DUCT, 600V, 2-1C NO.10, 1/C NO.10 GROUND, (XLP-TYPE USE), 3/4" DIA. POLYETHYLENE	FOOT	653.0	275.0	378.0
FLOOD LIGHTING UNIT	EACH	2.0	1.0	1.0
REMOVE EXISTING LIGHTING SYSTEM	L SUM	1.0	0.5	0.5
MISCELLANEOUS ELECTRICAL WORK	L SUM	1.0	0.5	0.5
LUMINAIRE, LED, HORIZONTAL MOUNT, VERY LOW WATTAGE	EACH	11.0	5.0	6.0
LIGHTING CONTROLLER, SPECIAL	EACH	2.0	1.0	1.0
LIGHT POLE, SPECIAL	EACH	11.0	5.0	6.0
LIGHT POLE FOUNDATION, SPECIAL	EACH	11.0	5.0	6.0

FILE NAME =	USER NAME = *USER*	DESIGNED -	REVISED -
*FILE#		DRAWN -	REVISED -
	PLOT SCALE = *SCALE*	CHECKED -	REVISED -
	PLOT DATE = *DATE*	DATE -	REVISED -

**STATE OF ILLINOIS
DEPARTMENT OF TRANSPORTATION**

SCHEDULE OF QUANTITIES

SCALE: _____ STA. _____ TO STA. _____

F.A.I. RTE.	SECTION	COUNTY	TOTAL SHEETS	SHEET NO.
74	48-29RA(L-1)	KNOX	17	4
CONTRACT NO. 68E46				
ILLINOIS FED. AID PROJECT				



THE CONTRACTOR SHALL REMOVE THE EXISTING WALKWAY LIGHT POLES, LUMINAIRES, FOUNDATIONS, JUNCTION BOXES, AND ELECTRIC CABLES FROM THE I-74 EB SPOON RIVER REST AREAS AND DISPOSE OF THE MATERIALS OFF THE RIGHT OF WAY. THIS WORK SHALL BE PAID FOR AS "REMOVE EXISTING LIGHTING SYSTEM. THE CONTRACTOR SHALL REFLECT THE SALVAGE PRICE OF THE MATERIALS IN THE BID PRICE FOR THE REMOVAL PAY ITEM.

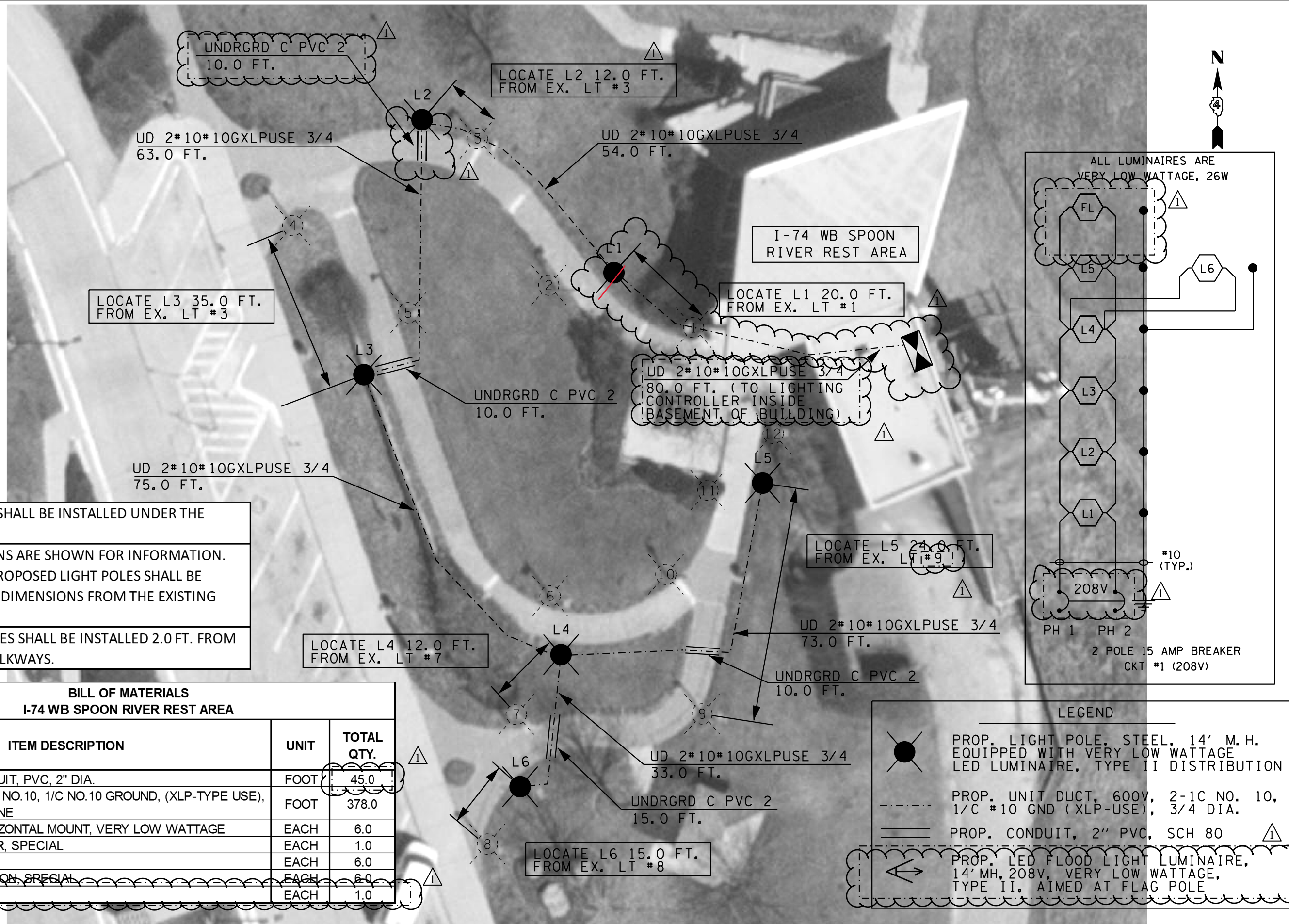
LEGEND

EX. WALKWAY LIGHT POLE AND LUMINAIRE

BILL OF MATERIALS I-74 EB SPOON RIVER REST AREA		
ITEM DESCRIPTION	UNIT	TOTAL QTY.
REMOVE EXISTING LIGHTING SYSTEM	L SUM	0.5

NOT TO SCALE

FILE NAME = *FILEL*	USER NAME = *USER*	DESIGNED -	REVISED -	STATE OF ILLINOIS DEPARTMENT OF TRANSPORTATION	REMOVAL OF EXISTING LIGHTING I-74 EB SPOON RIVER AREA	F.A.I. RTE. 74	SECTION 48-29RA(L-1)	COUNTY KNOX	TOTAL SHEETS 17	SHEET NO. 5
		DRAWN -	REVISED -		SCALE:				CONTRACT NO. 68E46	
		CHECKED -	REVISED -			STA.			ILLINOIS FED. AID PROJECT	
		DATE -	REVISED -						REV. 7/25/18	



LOCATE L3 35.0 FT.
FROM EX. LT #3

LOCATE L2 12.0 FT.
FROM EX. LT #3

LOCATE L1 20.0 FT.
FROM EX. LT #1

LOCATE L4 12.0 FT.
FROM EX. LT #7

LOCATE L5 24.0 FT.
FROM EX. LT #9

LOCATE L6 15.0 FT.
FROM EX. LT #8

2" PVC SCHEDULE 80 SHALL BE INSTALLED UNDER THE WALKWAYS.
LIGHT POLE LOCATIONS ARE SHOWN FOR INFORMATION. THE LOCATIONS OF PROPOSED LIGHT POLES SHALL BE REFERENCED ON THE DIMENSIONS FROM THE EXISTING LIGHT POLES.
PROPOSED LIGHT POLES SHALL BE INSTALLED 2.0 FT. FROM THE EDGE OF THE WALKWAYS.

BILL OF MATERIALS I-74 WB SPOON RIVER REST AREA		
ITEM DESCRIPTION	UNIT	TOTAL QTY.
UNDERGROUND CONDUIT, PVC, 2" DIA.	FOOT	45.0
UNIT DUCT, 600V, 2-1C NO.10, 1/C NO.10 GROUND, (XLP-TYPE USE), 3/4" DIA. POLYETHYLENE	FOOT	378.0
LUMINAIRE, LED, HORIZONTAL MOUNT, VERY LOW WATTAGE	EACH	6.0
LIGHTING CONTROLLER, SPECIAL	EACH	1.0
LIGHT POLE, SPECIAL	EACH	6.0
LIGHT POLE FOUNDATION, SPECIAL	EACH	6.0
FLOOD LIGHTING UNIT	EACH	1.0

LEGEND

● PROP. LIGHT POLE, STEEL, 14' M.H. EQUIPPED WITH VERY LOW WATTAGE LED LUMINAIRE, TYPE II DISTRIBUTION

--- PROP. UNIT DUCT, 600V, 2-1C NO. 10, 1/C #10 GND (XLP-USE), 3/4 DIA.

==== PROP. CONDUIT, 2" PVC, SCH 80

⚡ PROP. LED FLOOD LIGHT LUMINAIRE, 14' MH, 208V, VERY LOW WATTAGE, TYPE II, AIMED AT FLAG POLE

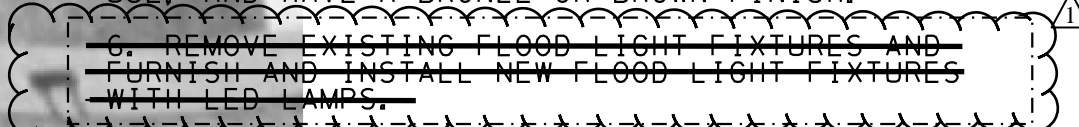
LIGHTING FIXTURE LEGEND

-  REPLACE BALLAST & INSTALL LED TUBES, INTERIOR (EX. FLUORESCENT TWO TUBE FIXTURE)
-  LED FIXTURE, INTERIOR (EX. FLUORESCENT FOUR TUBE FIXTURE)
-  LED CAN LIGHT, EXTERIOR (EX. 75W CFL CAN LIGHT)
-  LED CAN LIGHT, INTERIOR (EX. 75W CFL CAN LIGHT)
-  LED FLOOD LIGHT FIXTURE, INTERIOR (EX. FLUORESCENT FLOOD LIGHT FIXTURE)
-  LED WALL PACK FIXTURE, EXTERIOR (EX. FLUORESCENT WALL PACK 100W EQUIV. FIXTURE)



THE CONTRACTOR SHALL PERFORM THE FOLLOWING AT THE I-74 EB REST AREA:

1. REMOVE THE EXISTING FOUR TUBE CEILING MOUNTED LIGHT FIXTURES (QTY. 6) IN THE REST AREA LOBBY, DISPOSE OF THEM OFF THE JOB SITE, AND FURNISH AND INSTALL NEW CEILING MOUNTED LIGHT FIXTURES (COMMERCIAL GRADE) WITH REPLACABLE DIMMABLE LED LAMPS (40W FLUORESCENT LAMP EQUIVALENT) AND ELECTRONIC DRIVERS.
2. REMOVE EXISTING CFL LAMPS FROM ALL INTERIOR CAN LIGHT FIXTURES (QTY. 8) AND FURNISH AND INSTALL DIMMABLE LED LAMPS (75W EQUIVALENT).
3. REMOVE EXISTING CFL LAMPS FROM ALL EXTERIOR CAN LIGHT FIXTURES (QTY. 4) AND FURNISH AND INSTALL OUTDOOR RATED DIMMABLE LED LAMPS (75W EQUIVALENT).
4. RETROFIT EXISTING TWO TUBE LIGHT FIXTURES LOCATED (QTY. 21) INSIDE THE RESTROOM CEILING AND INSIDE THE DRINKING FOUNTAIN/VENDING AREA CEILING WITH DIMMABLE LED LAMPS. THE EXISTING FIXTURE BALLASTS SHALL BE REMOVED AND THE CONTRACTOR SHALL FURNISH AND INSTALL A NEW LED LAMP COMPATIBLE ELECTRONIC BALLASTS.
5. REMOVE EXISTING EXTERIOR WALL MOUNTED FIXTURES (QTY. 2) AND FURNISH AND INSTALL NEW FIXTURE WITH PHOTOCELL CONTROL AND OUTDOOR RATED LED LAMP (100W EQUIVALENT.) THE FIXTURE SHALL BE COMMERCIAL GRADE, RATED FOR HEAVY DUTY USE, AND HAVE A BRONZE OR BROWN FINISH.
- ~~6. REMOVE EXISTING FLOOD LIGHT FIXTURES AND FURNISH AND INSTALL NEW FLOOD LIGHT FIXTURES WITH LED LAMPS.~~
7. FURNISH ONE COMPLETE SPARE FOUR LAMP FIXTURE WITH LAMPS, SIX SPARE LED LAMPS FOR CAN FIXTURES, SIX SPARE LED TUBES, SIX ELECTRONIC BALLASTS, AND ONE COMPLETE EXTERIOR FLOOD LIGHT FIXTURE WITH LAMP.
8. RECYCLE ALL FLUORESCENT LAMPS AT A CERTIFIED RECYCLING CENTER.
9. THE CONTRACTOR SHALL VERIFY FIELD CONDITIONS PRIOR TO BIDDING AND ADJUST QUANTITIES AS NEEDED TO COMPLETELY RETROFIT ALL INTERIOR LIGHTING TO LEDS. THERE WILL BE NO ADDITIONAL COMPENSATION.
10. THIS WORK WILL BE PAID FOR AS "MISCELLANEOUS ELECTRICAL WORK".



FILE NAME = *FILEL*	USER NAME = *USER*	DESIGNED -	REVISED -	STATE OF ILLINOIS DEPARTMENT OF TRANSPORTATION	MISCELLANEOUS ELECTRICAL WORK I-74 EB SPOON RIVER AREA	SCALE:	STA.	TO STA.	F.A.I. RTE. 74	SECTION 48-29RA(L-1)	COUNTY KNOX	TOTAL SHEETS 17	SHEET NO. 9		
		DRAWN -	REVISED -			CONTRACT NO. 68E46									
		CHECKED -	REVISED -			ILLINOIS FED. AID PROJECT									
		DATE -	REVISED -			REV. 7/25/18									



THE CONTRACTOR SHALL PERFORM THE FOLLOWING AT THE I-74 WB REST AREA:

1. REMOVE THE EXISTING FOUR TUBE CEILING MOUNTED LIGHT FIXTURES (QTY. 6) IN THE REST AREA LOBBY, DISPOSE OF THEM OFF THE JOB SITE, AND FURNISH AND INSTALL NEW CEILING MOUNTED LIGHT FIXTURES (COMMERCIAL GRADE) WITH REPLACABLE DIMMABLE LED LAMPS (40W FLUORESCENT LAMP EQUIVALENT) AND ELECTRONIC DRIVERS.

2. REMOVE EXISTING CFL LAMPS FROM ALL INTERIOR CAN LIGHT FIXTURES (QTY. 11) AND FURNISH AND INSTALL DIMMABLE LED LAMPS (75W EQUIVALENT).

3. REMOVE EXISTING CFL LAMPS FROM ALL EXTERIOR CAN LIGHT FIXTURES (QTY. 4) AND FURNISH AND INSTALL OUTDOOR RATED DIMMABLE LED LAMPS (75W EQUIVALENT).

4. RETROFIT EXISTING TWO TUBE LIGHT FIXTURES LOCATED (QTY. 18) INSIDE THE RESTROOM CEILINGS AND INSIDE THE DRINKING FOUNTAIN/VENDING AREA CEILING WITH DIMMABLE LED LAMPS. THE EXISTING FIXTURE BALLASTS SHALL BE REMOVED AND THE CONTRACTOR SHALL FURNISH AND INSTALL A NEW LED LAMP COMPATIBLE ELECTRONIC BALLASTS.

5. REMOVE EXISTING EXTERIOR WALL MOUNTED FIXTURES (QTY. 2) AND FURNISH AND INSTALL NEW FIXTURE WITH PHOTOCELL CONTROL AND OUTDOOR RATED LED LAMP (100W EQUIVALENT.) THE FIXTURE SHALL BE COMMERCIAL GRADE, RATED FOR HEAVY DUTY USE, AND HAVE A BRONZE OR BROWN FINISH.

~~6. REMOVE EXISTING FLOOD LIGHT FIXTURES AND FURNISH AND INSTALL NEW FLOOD LIGHT FIXTURES WITH LED LAMPS.~~

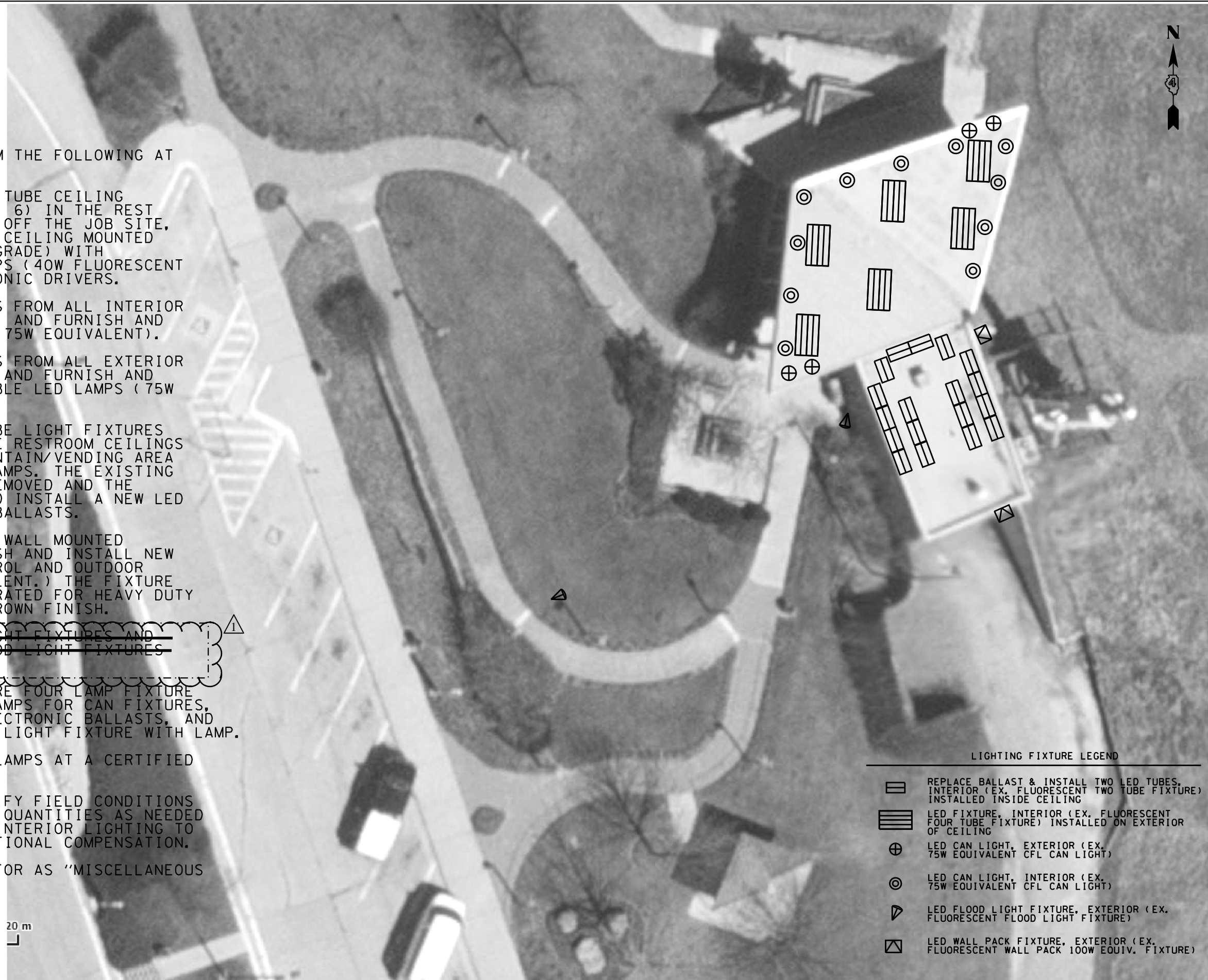
7. FURNISH ONE COMPLETE SPARE FOUR LAMP FIXTURE WITH LAMPS, SIX SPARE LED LAMPS FOR CAN FIXTURES, SIX SPARE LED TUBES, SIX ELECTRONIC BALLASTS, AND ONE COMPLETE EXTERIOR FLOOD LIGHT FIXTURE WITH LAMP.

8. RECYCLE ALL FLUORESCENT LAMPS AT A CERTIFIED RECYCLING CENTER.

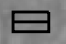





9. THE CONTRACTOR SHALL VERIFY FIELD CONDITIONS PRIOR TO BIDDING AND ADJUST QUANTITIES AS NEEDED TO COMPLETELY RETROFIT ALL INTERIOR LIGHTING TO LEDS. THERE WILL BE NO ADDITIONAL COMPENSATION.

10. THIS WORK WILL BE PAID FOR AS "MISCELLANEOUS ELECTRICAL WORK".

20 m



LIGHTING FIXTURE LEGEND

-  REPLACE BALLAST & INSTALL TWO LED TUBES, INTERIOR (EX. FLUORESCENT TWO TUBE FIXTURE) INSTALLED INSIDE CEILING
-  LED FIXTURE, INTERIOR (EX. FLUORESCENT FOUR TUBE FIXTURE) INSTALLED ON EXTERIOR OF CEILING
-  LED CAN LIGHT, EXTERIOR (EX. 75W EQUIVALENT CFL CAN LIGHT)
-  LED CAN LIGHT, INTERIOR (EX. 75W EQUIVALENT CFL CAN LIGHT)
-  LED FLOOD LIGHT FIXTURE, EXTERIOR (EX. FLUORESCENT FLOOD LIGHT FIXTURE)
-  LED WALL PACK FIXTURE, EXTERIOR (EX. FLUORESCENT WALL PACK 100W EQUIV. FIXTURE)

FILE NAME =	USER NAME = #USER#	DESIGNED -	REVISED -	STATE OF ILLINOIS DEPARTMENT OF TRANSPORTATION	MISCELLANEOUS ELECTRICAL WORK I-74 WB SPOON RIVER AREA	F.A.I. RTE.	SECTION	COUNTY	TOTAL SHEETS	SHEET NO.	
#FILE#		DRAWN -	REVISED -			74	48-29RA(L-1)	KNOX	17	10	
	PLOT SCALE = #SCALE#	CHECKED -	REVISED -			CONTRACT NO. 68E46					
	PLOT DATE = #DATE#	DATE -	REVISED -			ILLINOIS FED. AID PROJECT					

