

STATE OF ILLINOIS
DEPARTMENT OF TRANSPORTATION

F.A.I. RTE.	SECTION	COUNTY	TOTAL SHEETS	SHEET NO.
64	95-(3,4)PP-1	WASHINGTON	13	1
		ILLINOIS	CONTRACT NO. 76L64	

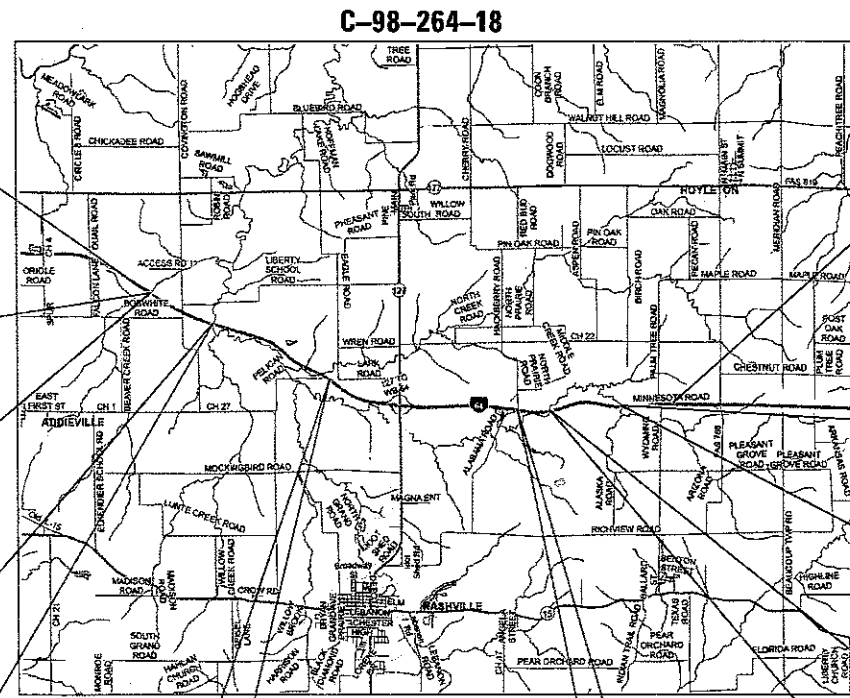
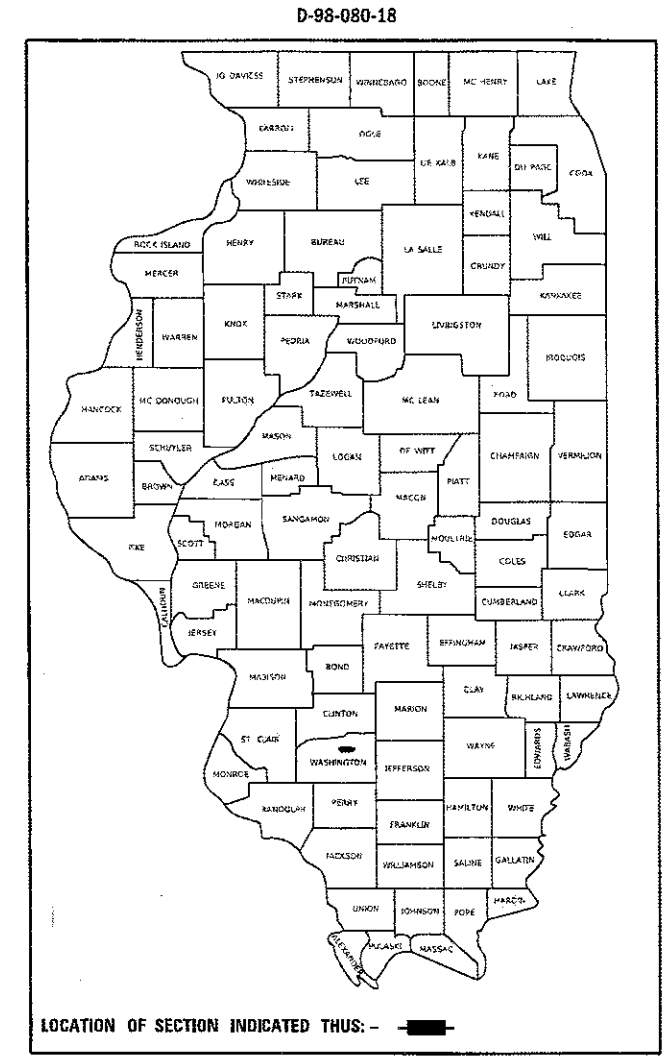
FOR INDEX OF SHEETS, SEE SHEET NO. 2

BEGINNING OF PROJECT TO IL 127
2017 ADT = 28000 (ACTUAL)
2018 ADT = 28400 (ESTIMATED)
2038 ADT = 38300 (ESTIMATED)
SU = 3.4% MU = 22.5%

IL 127 TO END OF PROJECT
2017 ADT = 26700 (ACTUAL)
2018 ADT = 27100 (ESTIMATED)
2038 ADT = 36500 (ESTIMATED)
SU = 3.6% MU = 23.6%

PROPOSED
HIGHWAY PLANS

FAI ROUTE 64 (I-64)
SECTION 95-(3,4)PP-1
PROJECT NHPP-ZRHS(449)
PATCHING & CENTER LINE MICRO-SURFACING
WASHINGTON COUNTY



BEGIN PROJECT
STA. 2408 + 60
LATITUDE: 38.421618
LONGITUDE: -89.452722

END PROJECT
STA. 2898 + 55
LATITUDE: 38.391147
LONGITUDE: -89.291715

BRIDGE OMISSION
SN 095-0046 (EB)
STA. 2433 + 01.05 TO
STA. 2434 + 06.95

BRIDGE OMISSION
SN 095-0057 (EB)
STA. 2860 + 56.85 TO
STA. 2861 + 53.15

BRIDGE OMISSION
SN 095-0047 (WB)
STA. 2433 + 01.05 TO
STA. 2434 + 06.95

BRIDGE OMISSION
SN 095-0058 (WB)
STA. 2860 + 56.85 TO
STA. 2861 + 53.15

BRIDGE OMISSION
SN 095-0048 (EB)
STA. 2492 + 93.85 TO
STA. 2495 + 06.15

BRIDGE OMISSION
SN 095-0055 (EB)
STA. 2798 + 73.00 TO
STA. 2800 + 17.00

BRIDGE OMISSION
SN 095-0049 (WB)
STA. 2492 + 77.85 TO
STA. 2494 + 90.15

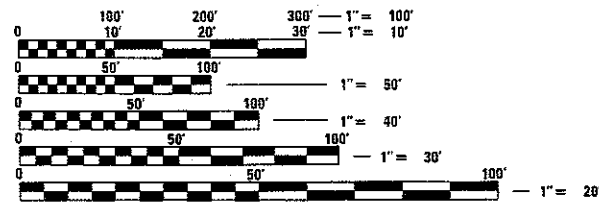
BRIDGE OMISSION
SN 095-0056 (WB)
STA. 2798 + 73.00 TO
STA. 2800 + 17.00

BRIDGE OMISSION
SN 095-0050 (EB)
STA. 2598 + 25.50 TO
STA. 2599 + 44.50

BRIDGE OMISSION
SN 095-0053 (EB)
STA. 2771 + 47.86 TO
STA. 2773 + 62.86

BRIDGE OMISSION
SN 095-0051 (WB)
STA. 2598 + 25.50 TO
STA. 2599 + 44.50

BRIDGE OMISSION
SN 095-0054 (WB)
STA. 2771 + 47.86 TO
STA. 2773 + 62.86



FULL SIZE PLANS HAVE BEEN PREPARED USING STANDARD ENGINEERING SCALES. REDUCED SIZED PLANS WILL NOT CONFORM TO STANDARD SCALES. IN MAKING MEASUREMENTS ON REDUCED PLANS, THE ABOVE SCALES MAY BE USED.

J.U.L.I.E.
JOINT UTILITY LOCATION INFORMATION FOR EXCAVATION
1-800-892-0123
OR 811

PROJECT ENGINEER: HERVE GELIN 618-346-3179
PROJECT MANAGER: BILLIE OWEN 618-346-3209

CONTRACT NO. 76L64

GROSS LENGTH = 48995.00 FT. = 9.279 MILE
NET LENGTH = 48102.50 FT. = 9.110 MILE

STATE OF ILLINOIS
DEPARTMENT OF TRANSPORTATION

SUBMITTED *April 26, 2018*
Jeffrey Z. Kan...
REGIONAL ENGINEER

June 29, 2018
[Signature]
ENGINEER OF DESIGN AND ENVIRONMENT

June 29, 2018
[Signature]
DIRECTOR OF HIGHWAYS PROJECT IMPLEMENTATION

PRINTED BY THE AUTHORITY
OF THE STATE OF ILLINOIS

INDEX OF SHEETS

- 1 COVER SHEET
- 2 INDEX OF SHEETS, HIGHWAY STANDARDS, GENERAL NOTES & COMMITMENTS
- 3-5 SUMMARY OF QUANTITIES
- 6-7 TYPICAL SECTIONS
- 8-11 SCHEDULES
- 12 PIPE UNDERDRAIN OUTLET MARKING DETAIL
- 13 PARTIAL DEPTH PATCHING DETAIL

HIGHWAY STANDARDS

- 000001-06
- 001001-02
- 001006
- 601001-05
- 601101-02
- 701101-05
- 701106-02
- 701400-09
- 701401-11
- 701411-09
- 701901-07
- 780001-05
- 781001-04

GENERAL NOTES

1. ILLINOIS STATE LAW REQUIRES A 48-HOUR NOTICE BE GIVEN TO ALL UTILITIES WITHIN THE PROJECT AREA BEFORE DIGGING. FIELD MARKING OF FACILITIES MAY BE OBTAINED BY CONTACTING J.U.L.I.E. OR FOR NON-MEMBERS, THE UTILITY COMPANY DIRECTLY. AGENCIES KNOWN TO HAVE FACILITIES WITHIN THE PROJECT AREA ARE AS FOLLOWS:

UTILITY	ABOVE GROUND	BELOW GROUND
*AT&T ILLINOIS (COMMUNICATIONS)	X	X
*COUNTRYMARK COOPERATIVE, LLP (PIPELINE)		X
*FRONTIER COMMUNICATIONS (COMMUNICATIONS)	X	X
*VILLAGE OF HOYLETON (WATER & SANITARY SEWER)		X
*CITY OF NASHVILLE (GAS)		X
*CITY OF NASHVILLE (WATER & SANITARY SEWER)		X
*NATURAL GAS PIPELINE COMPANY OF AMERICA (PIPELINE)		X
*SUNOCO LOGISTICS (PIPELINE)		X
*TRI-COUNTY ELECTRIC COOPERATIVE, INC. (ELECTRIC)	X	X
*WASHINGTON COUNTY WATER CO. (WATER)		X

MEMBERS OF J.U.L.I.E. CALL TOLL FREE (800) 892-0123 OR 811 AND ARE INDICATED BY *. NON- J.U.L.I.E. MEMBERS MUST BE NOTIFIED INDIVIDUALLY.

2. THE CONTRACTOR AND THE ENGINEER SHALL BE AWARE THAT NO SURVEY WAS PERFORMED FOR THIS PROJECT. THE STATIONING SHOWN IN THE PLAN SHEETS WAS CREATED USING MICROFILM. IT SHALL BE ASSUMED TO BE APPROXIMATE. THE CONTRACTOR SHALL VERIFY DIMENSIONS AND CONDITIONS IN THE FIELD PRIOR TO CONSTRUCTION AND ORDERING OF MATERIALS.

3. THE FOLLOWING MIXTURE REQUIREMENTS ARE APPLICABLE FOR THIS PROJECT:

MIXTURE USE	MICRO-SURFACE	RRPM FILL	PARTIAL DEPTH PATCH	PARTIAL DEPTH PATCH	SHOULDERS ≥ 2.25"	SHOULDERS < 2.25"
		LEVEL BINDER	POLY SURFACE, 2 1/2"	POLY BINDER, 4"		
AC/PG		PG 64-22	SBS PG 76-22	SBS PG 76-22	PG 64-22	PG 64-22
RAP % (MAX)		SEE SPECIAL PROVISION	SEE SPECIAL PROVISION	SEE SPECIAL PROVISION	SEE SPECIAL PROVISION	SEE SPECIAL PROVISION
DESIGN AIR VOIDS		4.0% @Ndes=70	4.0% @Ndes=90	4.0% @Ndes=90	4.0% @ Ndes=30	4.0% @ Ndes=30
MIX COMPOSITION (Gradation)		IL 4.75	IL 9.5	IL 19.0	IL 19.0L	IL 9.5L
FRICITION AGG	MIXTURE "E"	MIXTURE "C"	MIXTURE "E"	MIXTURE "B"		
QUALITY MGMT PROGRAM		QC/QA	QC/QA	QC/QA	QC/QA	QC/QA

PLAN QUANTITIES FOR HOT-MIX ASPHALT ITEMS ARE CALCULATED USING A UNIT WEIGHT OF 112 LB/SQ YD/IN.

4. HOLES LEFT FROM THE REMOVAL OF RAISED REFLECTIVE PAVEMENT MARKERS SHALL BE REPAIRED BEFORE THE PLACEMENT OF MICRO-SURFACING. A TACK COAT SHALL FIRST BE APPLIED, FOLLOWED BY THE PLACEMENT OF IL 4.75 MM LEVELING BINDER.
5. THE ENGINEER SHALL BE THE SOLE JUDGE CONCERNING CURING TIME FOR THE MICRO-SURFACING AND WHEN THE ROADWAY WILL BE OPEN TO TRAFFIC.
6. THE TEMPORARY PAVEMENT MARKING SHALL BE PLACED 3' OFF CENTERLINE IN DRIVING LANE PRIOR TO REMOVING EXISTING LINE.
7. THE THICKNESS OF THE HOT-MIX ASPHALT SURFACE REMOVAL FOR PARTIAL DEPTH PATCHING IS THE NOMINAL THICKNESS. DEVIATIONS MAY OCCUR DUE TO IRREGULARITIES IN THE EXISTING SURFACE. THE INTENTION OF THE MILLING IS TO REMOVE THE HOT-MIX ASPHALT ONLY. THE UNDERLYING CONCRETE SHALL NOT BE DISTURBED.
8. PAVEMENT MARKINGS SHALL MATCH THE LOCATION OF THE EXISTING PAVEMENT MARKINGS AS DIRECTED BY THE RESIDENT ENGINEER.
9. CENTERLINE PAVEMENT MARKINGS SHALL BE REMOVED FROM SURFACE PRIOR TO THE APPLICATION OF THE MICRO-SURFACING MATERIAL.

COMMITMENTS

NONE

MODEL: D:\default\... FILE NAME: P:\1108\B&E\ID\NTEG_ILLINOIS\gov\PIWDOT\Documents\DOT_Offices\District 8\Projects\0876164\CAD\data\CD\sheet\0876164-118-gmnotes.dgn

	USER NAME = leej	DESIGNED -	REVISED -	STATE OF ILLINOIS DEPARTMENT OF TRANSPORTATION	INDEX OF SHEETS, HIGHWAY STANDARDS, GENERAL NOTES & COMMITMENTS	F.A.I. RTE.	SECTION	COUNTY	TOTAL SHEETS	SHEET NO.	
		DRAWN -	REVISED -			64	95-(3,4)PP-1	WASHINGTON	14	2	
	PLOT SCALE = 100.0000 ' / in.	CHECKED -	REVISED -			CONTRACT NO. 76L64					
	PLOT DATE = 5/24/2018	DATE -	REVISED -			SCALE:		SHEET 1 OF 1 SHEETS		STA. TO STA.	

CODE NO.	ITEM	UNIT	TOTAL QUANTITY	CONSTR. CODE
				90% FED 10% STATE ROADWAY 0006 RURAL
40400001	FIBER-MODIFIED ASPHALT CRACK SEALING	FOOT	98706	98706
40400122	MICRO-SURFACING, SINGLE PASS, MIXTURE E	SQ YD	32902	32902
40600290	BITUMINOUS MATERIALS (TACK COAT)	POUND	7458	7458
40600400	MIXTURE FOR CRACKS, JOINTS, AND FLANGEWAYS	TON	38	38
44200630	CLASS A PATCHES, TYPE II, 15 INCH	SQ YD	43	43
44200631	CLASS A PATCHES, TYPE III, 15 INCH	SQ YD	37	37
44200632	CLASS A PATCHES, TYPE IV, 15 INCH	SQ YD	386	386
44213000	PATCHING REINFORCEMENT	SQ YD	466	466
44213200	SAW CUTS	FOOT	1159	1159
44213204	TIE BARS 3/4"	EACH	155	155
60100060	CONCRETE HEADWALLS FOR PIPE DRAINS	EACH	3	3
60100070	SHOULDER REMOVAL AND REPLACEMENT	FOOT	575	575
60107600	PIPE UNDERDRAINS 4"	FOOT	575	575
60108100	PIPE UNDERDRAINS 4" (SPECIAL)	FOOT	120	120
67100100	MOBILIZATION	L SUM	1	1

MODEL: D:\enr\it
 FILE NAME: p:\110848\BID\ITEG_illinois.gov\MI\DOT\Documents\DOT_Offices\District_8\Projects\08761661\CAD\Drawn\CAD\Drawn\08761661-INK-500.dgn

USER NAME = lecj	DESIGNED -	REVISED -
PLOT SCALE = 100.0000" / in.	DRAWN -	REVISED -
PLOT DATE = 5/10/2018	CHECKED -	REVISED -
	DATE -	REVISED -

**STATE OF ILLINOIS
DEPARTMENT OF TRANSPORTATION**

SUMMARY OF QUANTITIES

F.A.I. RTE.	SECTION	COUNTY	TOTAL SHEETS	SHEET NO.
64	95-(3,4)PP-1	WASHINGTON	13	3
CONTRACT NO. 76L64			ILLINOIS FED. AID PROJECT	

SCALE: SHEET 1 OF 3 SHEETS STA. TO STA.

CODE NO.	ITEM	UNIT	TOTAL QUANTITY	CONSTR. CODE
				90% FED 10% STATE ROADWAY 0006 RURAL
70100420	TRAFFIC CONTROL AND PROTECTION, STANDARD 701411	EACH	4	4
70100800	TRAFFIC CONTROL AND PROTECTION, STANDARD 701401	L SUM	1	1
70103815	TRAFFIC CONTROL SURVEILLANCE	CAL DAY	50	50
70200100	NIGHTTIME WORK ZONE LIGHTING	L SUM	1	1
70300100	SHORT TERM PAVEMENT MARKING	FOOT	26238	26238
70300150	SHORT TERM PAVEMENT MARKING REMOVAL	SQ FT	2916	2916
70300240	TEMPORARY PAVEMENT MARKING - LINE 6"	FOOT	24052	24052
78000100	THERMOPLASTIC PAVEMENT MARKING - LETTERS AND SYMBOLS	SQ FT	6	6
78000400	THERMOPLASTIC PAVEMENT MARKING - LINE 6"	FOOT	25117	25117
78100100	RAISED REFLECTIVE PAVEMENT MARKER	EACH	2406	2406
78300200	RAISED REFLECTIVE PAVEMENT MARKER REMOVAL	EACH	2406	2406
X0327979	PAVEMENT MARKING REMOVAL - GRINDING	SQ FT	12026	12026
X4405065	LONGITUDINAL PARTIAL DEPTH REMOVAL 6 1/2"	FOOT	782	782
X4406265	PARTIAL DEPTH REMOVAL, TYPE II, 6.5"	SQ YD	247	247

MODEL: C:\p1\it
 FILE NAME: \\s1\ill08a\BNDNTEG\ill08a\gov\AVD\DOT\document\101\DOT_Official\Bndntec\BNDNTEG\76164\CA\DD\BNDNTEG\BNDNTEG\76164-1-500-500

USER NAME = [ne]	DESIGNED -	REVISED -	STATE OF ILLINOIS DEPARTMENT OF TRANSPORTATION	SUMMARY OF QUANTITIES		F.A.I. RTE	SECTION	COUNTY	TOTAL SHEETS	SHEET NO.	
PLOT SCALE = 100.0000' / in.	DRAWN -	REVISED -				64	95-(3.4)PP-1	WASHINGTON	13	4	
PLOT DATE = 5/10/2018	CHECKED -	REVISED -		SCALE:	SHEET 2	OF 3	SHEETS	STA.	TO STA.	ILLINOIS	FED. AID PROJECT
	DATE -	REVISED -									

CODE NO.	ITEM	UNIT	TOTAL QUANTITY	CONSTR. CODE
				90% FED 10% STATE ROADWAY 0006 RURAL
X4406465	PARTIAL DEPTH REMOVAL, TYPE III, 6.5"	SQ YD	521	521
X4406665	PARTIAL DEPTH REMOVAL, TYPE IV, 6.5"	SQ YD	255	255
X4420900	LONGITUDINAL PARTIAL DEPTH PATCHING	TON	63	63
X4421000	PARTIAL DEPTH PATCHING	TON	376	376
X7030005	TEMPORARY PAVEMENT MARKING REMOVAL	SQ FT	12026	12026
Z0040530	PIPE UNDERDRAIN REMOVAL	FOOT	575	575
∅ Z0076600	TRAINEES	HOUR	1000	1000
∅ Z0076604	TRAINEES TRAINING PROGRAM GRADUATE	HOUR	1000	1000

∅ 0042

MODEL: Default
FILE NAME: D:\ILLINOIS\8484848\NITEG\Illinois.por\FWDOT\Documents\DOT Office\District 8\Projects\1876_LFA\CAD\Drawings\1876LFA44-500.dwg

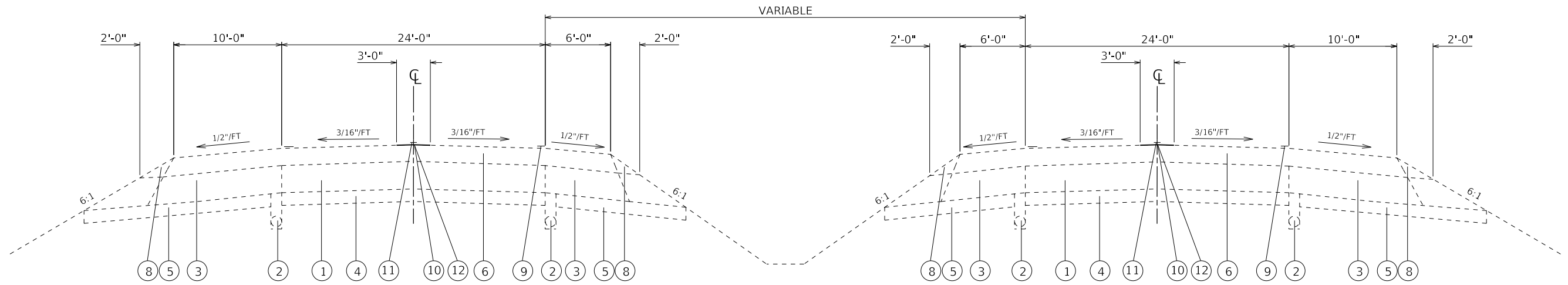
USER NAME = lscj	DESIGNED -	REVISED -
PLOT SCALE = 300.0000 / 1 in.	DRAWN -	REVISED -
PLOT DATE = 5/10/2018	CHECKED -	REVISED -
	DATE -	REVISED -

**STATE OF ILLINOIS
DEPARTMENT OF TRANSPORTATION**

SUMMARY OF QUANTITIES

SCALE: SHEET 3 OF 3 SHEETS STA. TO STA.

F.A.I. RTE.	SECTION	COUNTY	TOTAL SHEETS	SHEET NO.
64	95-(3,4)PP-1	WASHINGTON	13	5
ILLINOIS FED. AID PROJECT			CONTRACT NO. 76L64	

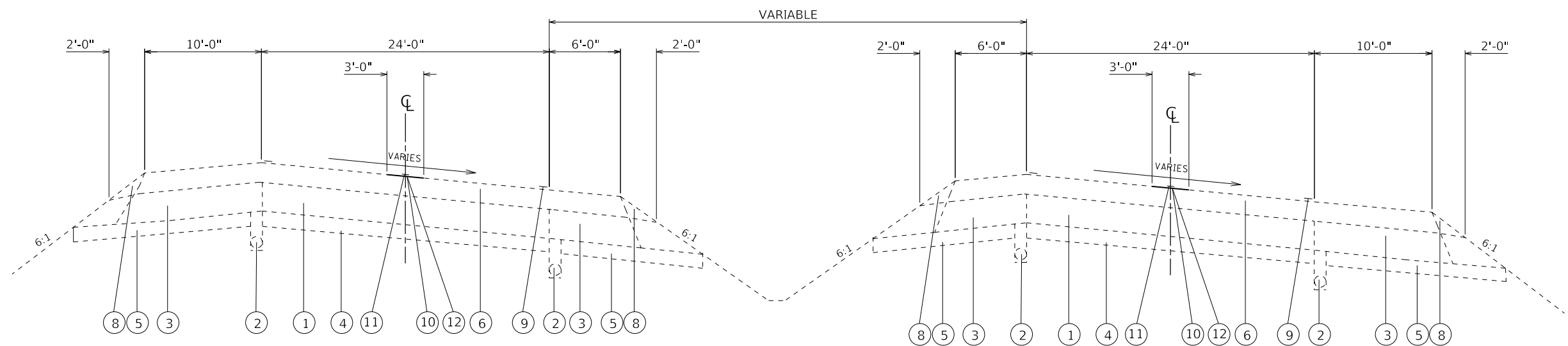


TANGENT SECTION

EASTBOUND AND WESTBOUND
 STA. 2408+60.00 TO STA. 2468+13.76
 STA. 2651+79.25 TO STA. 2898+55.08

EASTBOUND
 STA. 2468+13.76 TO STA. 2468+80.43
 STA. 2490+90.96 TO STA. 2531+89.48
 STA. 2556+73.11 TO STA. 2565+64.33
 STA. 2579+82.42 TO STA. 2592+15.27
 STA. 2610+35.29 TO STA. 2617+50.98
 STA. 2648+67.91 TO STA. 2651+79.25

WESTBOUND
 STA. 3468+13.50 TO STA. 3468+80.17
 STA. 3490+83.52 TO STA. 3531+37.23
 STA. 3557+76.90 TO STA. 3566+23.14
 STA. 3583+51.51 TO STA. 3590+88.14
 STA. 3609+08.15 TO STA. 3620+14.43
 STA. 3651+31.39 TO STA. 3651+98.06



SUPERELEVATED SECTION

EASTBOUND
 STA. 2531+89.48 TO STA. 2556+73.11
 STA. 2592+15.27 TO STA. 2610+35.29

WESTBOUND
 STA. 3531+37.23 TO STA. 3557+76.90
 STA. 3590+88.14 TO STA. 3609+08.15

LEGEND

- ① EXISTING CONTINUOUSLY REINFORCED PCC PAVEMENT 8"
- ② EXISTING PIPE UNDERDRAINS, 6"
- ③ EXISTING BITUMINOUS SHOULDER
- ④ EXISTING BAM STABILIZED SUB-BASE 4"
- ⑤ EXISTING SUB-BASE 4"
- ⑥ EXISTING RESURFACING - 6 1/2"
- ⑦ EXISTING PCC PAVEMENT - 9"
- ⑧ EXISTING AGGREGATE SHOULDER, TYPE B
- ⑨ EXISTING PAVEMENT MARKING
- ⑩ PROPOSED CENTER LINE MICRO-SURFACING, SINGLE PASS, MIXTURE E
- ⑪ PROPOSED THERMOPLASTIC PAVEMENT MARKING - LINE 4"
- ⑫ PROPOSED BITUMINOUS MATERIALS (TACK COAT)

SEE PAGE 2 OF 2 OF THE TYPICAL SECTIONS SHEETS FOR THE CENTERLINE MICRO-SURFACING DETAIL.

MODEL: D:\default
 FILE NAME: p:\ul\08\B8EID\NTEC\Illinois.gov\RWIDOT\Documents\DOT Office\District 8\Projects\0876\64\CAD\data\CAD\sheet\0876\64\ts-tyr\ts-tyr.dgn

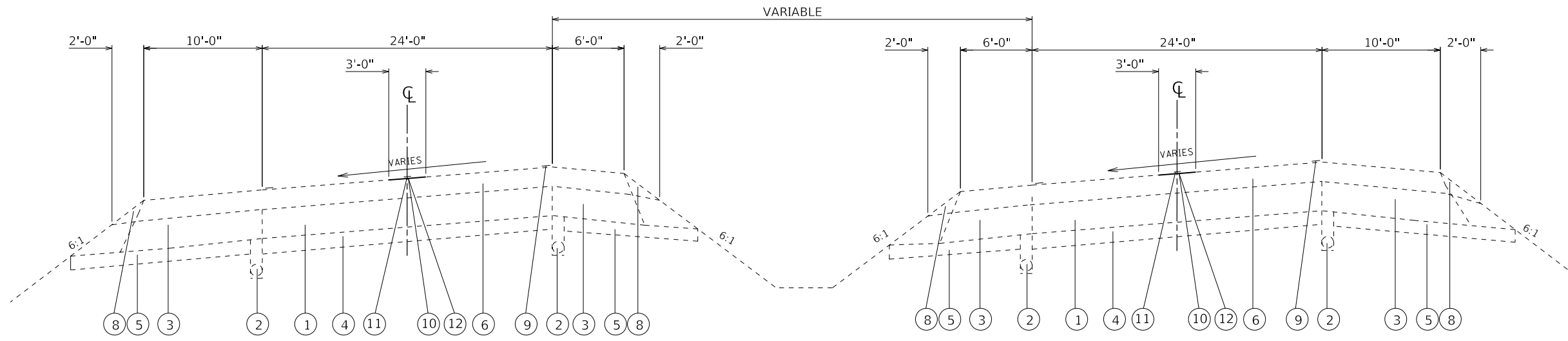
USER NAME = leej	DESIGNED -	REVISED -
	DRAWN -	REVISED -
PLOT SCALE = 100.0000' / in.	CHECKED -	REVISED -
PLOT DATE = 5/25/2018	DATE -	REVISED -

STATE OF ILLINOIS
 DEPARTMENT OF TRANSPORTATION

TYPICAL SECTIONS

SCALE: SHEET 1 OF 2 SHEETS STA. TO STA.

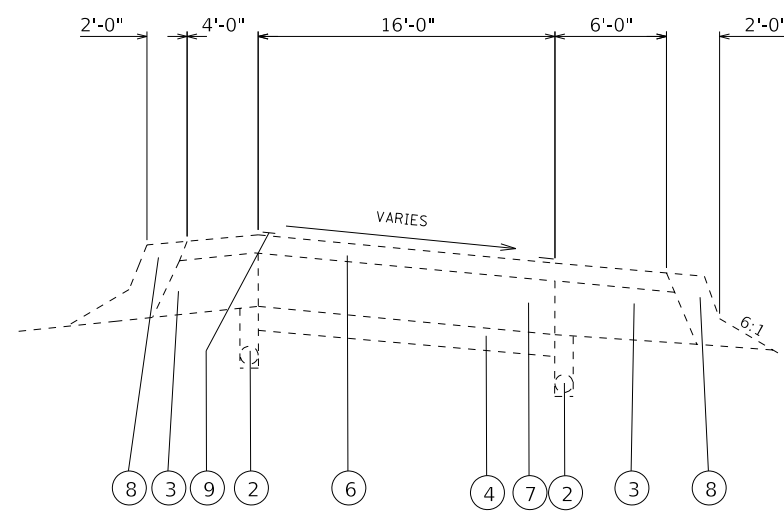
F.A.I. RTE.	SECTION	COUNTY	TOTAL SHEETS	SHEET NO.
64	95-(3,4)PP-1	WASHINGTON	13	6
CONTRACT NO. 76L64				
ILLINOIS FED. AID PROJECT				



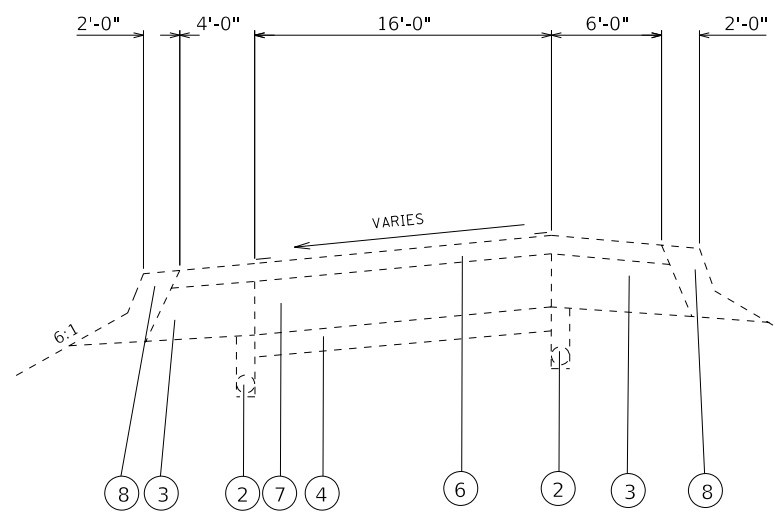
SUPERELEVATED SECTION

EASTBOUND
 STA. 2468+80.43 TO STA. 2490+90.96
 STA. 2565+64.33 TO STA. 2579+82.42
 STA. 2617+50.98 TO STA. 2648+67.91

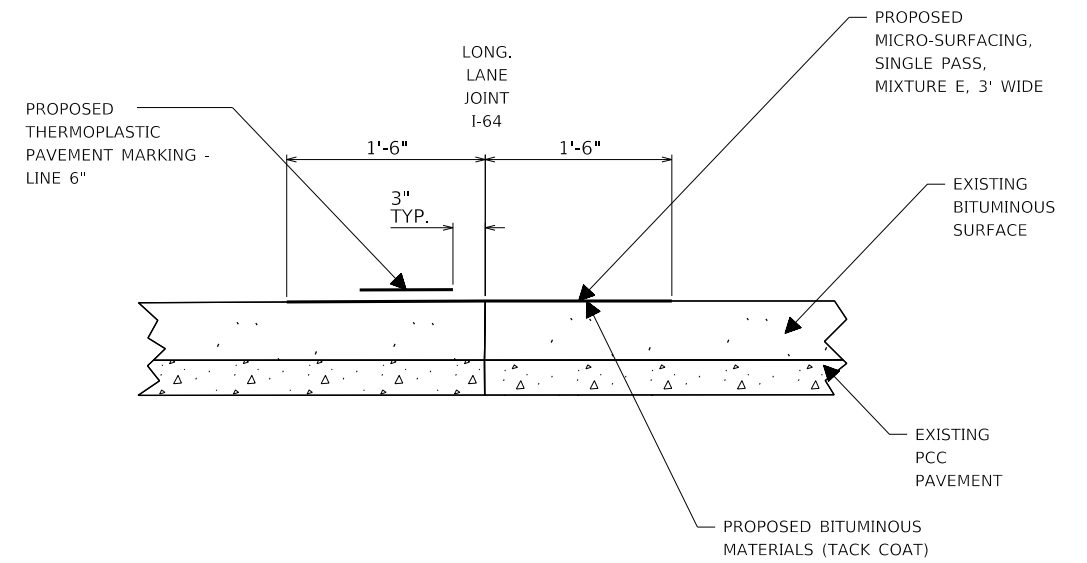
WESTBOUND
 STA. 3468+80.17 TO STA. 3490+83.52
 STA. 3566+23.14 TO STA. 3583+51.51
 STA. 3620+14.43 TO STA. 3651+31.39



RAMP - RIGHT SUPERELEVATED SECTION



RAMP - LEFT SUPERELEVATED SECTION



CENTERLINE MICRO-SURFACING DETAIL
 (NOT DRAWN TO SCALE)

LEGEND

- ① EXISTING CONTINUOUSLY REINFORCED PCC PAVEMENT 8"
- ② EXISTING PIPE UNDERDRAINS, 6"
- ③ EXISTING BITUMINOUS SHOULDER
- ④ EXISTING BAM STABILIZED SUB-BASE 4"
- ⑤ EXISTING SUB-BASE 4"
- ⑥ EXISTING RESURFACING - 6 1/2"
- ⑦ EXISTING PCC PAVEMENT - 9"
- ⑧ EXISTING AGGREGATE SHOULDER, TYPE B
- ⑨ EXISTING PAVEMENT MARKING
- ⑩ PROPOSED CENTER LINE MICRO-SURFACING, SINGLE PASS, MIXTURE E
- ⑪ PROPOSED THERMOPLASTIC PAVEMENT MARKING - LINE 4"
- ⑫ PROPOSED BITUMINOUS MATERIALS (TACK COAT)

MODEL: D:\p\11\1108\B&E\ID\TEG\Illinois.gov\RWIDOT\Documents\DOT Office\District 8\Projects\0876L64\CADD\data\CAD\sheet\0876L64-rhs-typrscale.dgn
 FILE NAME: p\1108\B&E\ID\TEG\Illinois.gov\RWIDOT\Documents\DOT Office\District 8\Projects\0876L64\CADD\data\CAD\sheet\0876L64-rhs-typrscale.dgn

USER NAME = leej	DESIGNED -	REVISED -
	DRAWN -	REVISED -
PLOT SCALE = 100.0000' / in.	CHECKED -	REVISED -
PLOT DATE = 5/25/2018	DATE -	REVISED -

**STATE OF ILLINOIS
 DEPARTMENT OF TRANSPORTATION**

TYPICAL SECTIONS			
SCALE:	SHEET 2	OF 2 SHEETS	STA. TO STA.

F.A.I. RTE.	SECTION	COUNTY	TOTAL SHEETS	SHEET NO.
64	95-(3,4)PP-1	WASHINGTON	13	7
			CONTRACT NO. 76L64	
		ILLINOIS FED. AID PROJECT		

MICRO-SURFACING SCHEDULE					
LOCATION		DIRECTION	FIBER-MODIFIED ASPHALT CRACK SEALING	BITUMINOUS MATERIALS (TACK COAT)	MICRO-SURFACING, SINGLE PASS, MIXTURE E
STATION	STATION		FOOT	LBS	SQ YD
2408+60.00	2433+01.05	EB	2441.05	184.48	813.68
2433+01.05	2434+06.95				BRIDGE OMISSION
2434+06.95	2492+93.85	EB	5886.90	444.89	1962.30
2492+93.85	2495+06.15				BRIDGE OMISSION
2495+06.15	2598+25.50	EB	10319.35	779.86	3439.78
2598+25.50	2599+44.50				BRIDGE OMISSION
2599+44.50	2771+47.86	EB	17203.36	1300.11	5734.45
2771+47.86	2773+62.86				BRIDGE OMISSION
2773+62.86	2798+73.00	EB	2510.14	189.70	836.71
2798+73.00	2800+17.00				BRIDGE OMISSION
2800+17.00	2860+56.85	EB	6039.85	456.45	2013.28
2860+56.85	2861+53.15				BRIDGE OMISSION
2861+53.15	2898+55.00	EB	3701.85	279.76	1233.95
2408+60.00	2433+01.05	WB	2441.05	184.48	813.68
2433+01.05	2434+06.95				BRIDGE OMISSION
2434+06.95	2492+77.85	WB	5870.90	443.68	1956.97
2492+77.85	2494+90.15				BRIDGE OMISSION
2494+90.15	2598+25.50	WB	10335.35	781.07	3445.12
2598+25.50	2599+44.50				BRIDGE OMISSION
2599+44.50	2771+47.86	WB	17203.36	1300.11	5734.45
2771+47.86	2773+62.86				BRIDGE OMISSION
2773+62.86	2798+73.00	WB	2510.14	189.70	836.71
2798+73.00	2800+17.00				BRIDGE OMISSION
2800+17.00	2860+56.85	WB	6039.85	456.45	2013.28
2860+56.85	2861+53.15				BRIDGE OMISSION
2861+53.15	2898+55.00	WB	3701.85	279.76	1233.95
I-64 AND EXIT 50		EB/WB	2500.00	187.50	833.33
		TOTAL	98706	7458	32902

THE QUANTITY FOR BITUMINOUS MATERIALS (TACK COAT) INCLUDES THE MATERIAL NEEDED TO FILL HOLES AFTER THE REMOVAL OF THE RAISED REFLECTIVE PAVEMENT MARKERS.

DRAINAGE SCHEDULE							
MILE POINT	STATION	DIRECTION	PIPE UNDERDRAIN REMOVAL	SHOULDER REMOVAL AND REPLACEMENT - 11"	PIPE UNDERDRAINS 4"	PIPE UNDERDRAINS 4" (SPECIAL)	CONCRETE HEADWALLS FOR PIPE DRAINS
			FOOT	FOOT	FOOT	FOOT	EACH
46.10	2465+09.60	EB	150	150	150	30	1
46.10	2465+09.60	WB	145	145	145	50	1
50.00	2671+01.60	EB	280	280	280	40	1
TOTAL			575	575	575	120	3

MODEL: D:\default... FILE NAME: P:\IL08A\EBID\NTEG... PROJECTS\DOT\Documents\DOT Office\District 8\Projects\DOT76L64\CAD\data\CAD\sheet\DOT76L64-PP-1-Schedule.dgn

USER NAME = leej	DESIGNED -	REVISED -	STATE OF ILLINOIS DEPARTMENT OF TRANSPORTATION	SCHEDULE OF QUANTITIES		F.A.I. RTE.	SECTION	COUNTY	TOTAL SHEETS	SHEET NO.
PLOT SCALE = 100.0000' / in.	CHECKED -	REVISED -				64	95-(3,4)PP-1	WASHINGTON	13	8
PLOT DATE = 5/25/2018	DATE -	REVISED -		SCALE:	SHEET 1	OF 4	SHEETS	STA.	TO STA.	CONTRACT NO. 76L64
										ILLINOIS FED. AID PROJECT

PARTIAL DEPTH PATCHING SCHEDULE										
MILE POINT	STATION	DIRECTION	LANE	LENGTH	WIDTH	AREA	PARTIAL DEPTH REMOVAL, TYPE II, 6.5"	PARTIAL DEPTH REMOVAL, TYPE III, 6.5"	PARTIAL DEPTH REMOVAL, TYPE IV, 6.5"	PARTIAL DEPTH PATCHING
				FOOT	FOOT	SQ YD	SQ YD	SQ YD	SQ YD	TON
45.50	2433+41.60	EB	DL	25	12	33.33	33.33			12.13
45.50	2433+41.60	EB	PL	25	12	33.33	33.33			12.13
46.62	2492+55.20	EB	PL	45	12	60.00		60.00		21.84
46.66	2494+66.40	EB	DL	45	12	60.00		60.00		21.84
46.66	2494+66.40	EB	DL	10	12	13.33	13.33			4.85
50.15	2678+93.60	EB	DL	20	6	13.33	13.33			4.85
50.25	2684+21.60	EB	DL	80	12	106.67			106.67	38.83
51.95	2773+97.60	EB	DL	42	12	56.00		56.00		20.38
51.97	2775+03.20	EB	DL	30	12	40.00	40.00			14.56
52.00	2776+61.60	EB	DL	120	6	80.00		80.00		29.12
52.44	2799+84.80	EB	PL	57	12	76.00		76.00		27.66
52.44	2799+84.80	EB	DL	86	12	114.67			114.67	41.74
45.50	2433+41.60	WB	DL	25	12	33.33	33.33			12.13
46.60	2491+49.60	WB	DL	51	12	68.00		68.00		24.75
51.88	2770+28.00	WB	DL	36	12	48.00	48.00			17.47
51.94	2773+44.80	WB	DL	40	12	53.33		53.33		19.41
51.95	2773+97.60	WB	DL	12	6	8.00				2.91
SUBTOTAL							215	453	221	327
15% ADDITION							32	68	33	49
TOTAL							247	521	255	376

LONGITUDINAL PARTIAL DEPTH PATCHING SCHEDULE								
MILE POINT	STATION	DIRECTION	LANE	LENGTH	WIDTH	AREA	LONGITUDINAL PARTIAL DEPTH REMOVAL 6 1/2"	LONGITUDINAL PARTIAL DEPTH PATCHING
				FOOT	FOOT	SQ YD	FOOT	TON
47.56	2542+18.	EB	CL	15	2	3.33	15.00	1.21
47.58	2543+24.	EB	CL	50	2	11.11	50.00	4.04
47.61	2544+82.	EB	CL	20	2	4.44	20.00	1.62
47.84	2556+96.	EB	CL	25	2	5.56	25.00	2.02
47.85	2557+49.	EB	CL	10	2	2.22	10.00	0.81
48.60	2597+09.	EB	CL	30	2	6.67	30.00	2.43
48.65	2599+73.	EB	CL	40	2	8.89	40.00	3.24
49.54	2646+72.	EB	CL	25	2	5.56	25.00	2.02
49.56	2647+78.	EB	CL	20	2	4.44	20.00	1.62
49.87	2664+15.	EB	CL	20	2	4.44	20.00	1.62
50.06	2674+18.	EB	CL	15	2	3.33	15.00	1.21
51.86	2769+22.	EB	CL	70	2	15.56	70.00	5.66
52.46	2800+90.	EB	CL	120	2	26.67	120.00	9.71
53.21	2840+50.	EB	CL	60	2	13.33	60.00	4.85
53.65	2863+73.	EB	CL	15	2	3.33	15.00	1.21
46.06	2462+98.	WB	CL	40	2	8.89	40.00	3.24
46.09	2464+56.	WB	CL	10	2	2.22	10.00	0.81
46.11	2465+62.	WB	CL	15	2	3.33	15.00	1.21
48.60	2597+09.	WB	CL	35	2	7.78	35.00	2.83
48.62	2598+15.	WB	CL	15	2	3.33	15.00	1.21
48.67	2600+79.	WB	CL	30	2	6.67	30.00	2.43
SUBTOTAL							680	55
15% ADDITION							102	8
TOTAL							782	63

MODEL: Default
 FILE: \\nas01\B&E\BID\NTEC\Illinois\gov\p\W\DOT\Documents\DOT_Offices\Director\B\Projects\087616\ACAD\data\CAD\sheet\087616\4-17-18\sheet06.dgn

USER NAME = leej	DESIGNED -	REVISED -
	DRAWN -	REVISED -
PLOT SCALE = 100.0000' / in.	CHECKED -	REVISED -
PLOT DATE = 5/10/2018	DATE -	REVISED -

STATE OF ILLINOIS
DEPARTMENT OF TRANSPORTATION

SCHEDULE OF QUANTITIES			
SCALE:	SHEET 2	OF 4	SHEETS
	STA.		TO STA.

F.A.I. RTE.	SECTION	COUNTY	TOTAL SHEETS	SHEET NO.
64	95-(3,4)PP-1	WASHINGTON	13	9
CONTRACT NO. 76L64				
ILLINOIS FED. AID PROJECT				

FULL DEPTH PATCHING SCHEDULE												
MILE POINT	STATION	DIRECTION	LANE	LENGTH	WIDTH	AREA	CLASS A PATCHES, TYPE II, 15 INCH	CLASS A PATCHES, TYPE III, 15 INCH	CLASS A PATCHES, TYPE IV, 15 INCH	PATCHING REINFORCEMENT	SAW CUTS	TIE BARS 3/4"
				FOOT	FOOT	SQ YD	SQ YD	SQ YD	SQ YD	SQ YD	FOOT	EACH
46.09	2464+56.80	EB	DL	115	12	153.33			153.33	153.33	280.00	57.00
46.09	2464+56.80	EB	PL	24	6	16.00		16.00		16.00	74.00	11.00
49.99	2670+48.80	EB	DL	10	12	13.33	13.33			13.33	70.00	
50.00	2671+01.60	EB	DL	87	12	116.00			116.00	116.00	224.00	43.00
50.02	2672+07.20	EB	DL	50	12	66.67			66.67	66.67	150.00	24.00
51.78	2765+00.00	EB	DL	8	12	10.67	10.7			10.67	66.00	
51.80	2766+05.60	EB	DL	10	12	13.33	13.3			13.33	70.00	
46.09	2464+56.80	WB	DL	12	12	16.00		16.00		16.00	74.00	
SUBTOTAL							37	32	336	405	1008	135
15% ADDITION							6	5	50	61	151	20
TOTAL							43	37	386	466	1159	155

PAVEMENT MARKING SCHEDULE - MICROSURFACING												
LOCATION		DIRECTION	LENGTH	PAVEMENT MARKING REMOVAL - GRINDING	SHORT TERM PAVEMENT MARKING	SHORT TERM PAVEMENT MARKING REMOVAL	TEMPORARY PAVEMENT MARKING - LINE 6"	TEMPORARY PAVEMENT MARKING REMOVAL	THERMOPLASTIC PAVEMENT MARKING - LINE 6"	RAISED REFLECTIVE PAVEMENT MARKER	RAISED REFLECTIVE PAVEMENT MARKER REMOVAL	MIXTURE FOR CRACKS, JOINTS, AND FLANGEWAYS
									WHITE			
STATION	STATION		FOOT	SQ FT	FOOT	SQ FT	FOOT	SQ FT	FOOT	EACH	EACH	TON
2408+60.00	2433+01.05	EB	2441.0	305.1	665.7	74.0	610.3	305.1	610.3	61	61	0.9
2433+01.05	2434+06.95	BRIDGE OMISSION										
2434+06.95	2492+93.85	EB	5886.9	735.9	1605.5	178.4	1471.7	735.9	1471.7	147	147	2.3
2492+93.85	2495+06.15	BRIDGE OMISSION										
2495+06.15	2598+25.50	EB	10319.4	1289.9	2814.4	312.7	2579.8	1289.9	2579.8	258	258	4.0
2598+25.50	2599+44.50	BRIDGE OMISSION										
2599+44.50	2771+47.86	EB	17203.4	2150.4	4691.8	521.3	4300.8	2150.4	4300.8	430	430	6.7
2771+47.86	2773+62.86	BRIDGE OMISSION										
2773+62.86	2798+73.00	EB	2510.1	313.8	684.6	76.1	627.5	313.8	627.5	63	63	1.0
2798+73.00	2800+17.00	BRIDGE OMISSION										
2800+17.00	2860+56.85	EB	6039.8	755.0	1647.2	183.0	1510.0	755.0	1510.0	151	151	2.4
2860+56.85	2861+53.15	BRIDGE OMISSION										
2861+53.15	2898+55.00	EB	3701.9	462.7	1009.6	112.2	925.5	462.7	925.5	93	93	1.4
2408+60.00	2433+01.05	WB	2441.0	305.1	665.7	74.0	610.3	305.1	610.3	61	61	0.9
2433+01.05	2434+06.95	BRIDGE OMISSION										
2434+06.95	2492+77.85	WB	5870.9	733.9	1601.2	177.9	1467.7	733.9	1467.7	147	147	2.3
2492+77.85	2494+90.15	BRIDGE OMISSION										
2494+90.15	2598+25.50	WB	10335.4	1291.9	2818.7	313.2	2583.8	1291.9	2583.8	258	258	4.0
2598+25.50	2599+44.50	BRIDGE OMISSION										
2599+44.50	2771+47.86	WB	17203.4	2150.4	4691.8	521.3	4300.8	2150.4	4300.8	430	430	6.7
2771+47.86	2773+62.86	BRIDGE OMISSION										
2773+62.86	2798+73.00	WB	2510.1	313.8	684.6	76.1	627.5	313.8	627.5	63	63	1.0
2798+73.00	2800+17.00	BRIDGE OMISSION										
2800+17.00	2860+56.85	WB	6039.8	755.0	1647.2	183.0	1510.0	755.0	1510.0	151	151	2.4
2860+56.85	2861+53.15	BRIDGE OMISSION										
2861+53.15	2898+55.00	WB	3701.9	462.7	1009.6	112.2	925.5	462.7	925.5	93	93	1.4
SUBTOTAL									24052			
TOTAL				12026	26238	2916	24052	12026		2406	2406	38

MODEL: Default
 FILE: \\u:\b\8\BID\NTEC\Illinois\poc\p\WDOT\Documents\DOT - Office\Director - Project\087616\CAD\DATA\CAD\Sheet\087616.dwg

USER NAME = leej	DESIGNED -	REVISED -
	DRAWN -	REVISED -
PLOT SCALE = 100,0000 ' / in.	CHECKED -	REVISED -
PLOT DATE = 5/10/2018	DATE -	REVISED -

STATE OF ILLINOIS
DEPARTMENT OF TRANSPORTATION

SCHEDULE OF QUANTITIES			
SCALE:	SHEET 3	OF 4	SHEETS
STA.		TO STA.	

F.A.I. RTE.	SECTION	COUNTY	TOTAL SHEETS	SHEET NO.
64	95-(3,4)PP-1	WASHINGTON	13	10
CONTRACT NO. 76L64				
ILLINOIS FED. AID PROJECT				

PAVEMENT MARKING SCHEDULE - PARTIAL DEPTH PATCHING							
MILE POINT	STATION	DIRECTION	LANE	LENGTH	WIDTH	THERMOPLASTIC PAVEMENT MARKING - LINE 6"	THERMOPLASTIC PAVEMENT MARKING - LINE 6"
						YELLOW	WHITE
				FOOT	FOOT	FOOT	FOOT
45.50	2433+41.60	EB	DL	25	12	25.00	
45.50	2433+41.60	EB	PL	25	12		25.00
46.62	2492+55.20	EB	PL	45	12		45.00
46.66	2494+66.40	EB	DL	45	12	45.00	
46.66	2494+66.40	EB	DL	10	12	10.00	
47.56	2542+18.40	EB	CL	15	2		
47.58	2543+24.00	EB	CL	50	2		
47.61	2544+82.40	EB	CL	20	2		
47.84	2556+96.80	EB	CL	25	2		
47.85	2557+49.60	EB	CL	10	2		
48.60	2597+09.60	EB	CL	30	2		
48.65	2599+73.60	EB	CL	40	2		
49.54	2646+72.80	EB	CL	25	2		
49.56	2647+78.40	EB	CL	20	2		
49.87	2664+15.20	EB	CL	20	2		
50.06	2674+18.40	EB	CL	15	2		
50.15	2678+93.60	EB	DL	20	6	20.00	
50.25	2684+21.60	EB	DL	80	12	80.00	
51.86	2769+22.40	EB	CL	70	2		
51.95	2773+97.60	EB	DL	42	12	42.00	
51.97	2775+03.20	EB	DL	30	12	30.00	
52.00	2776+61.60	EB	DL	120	6	120.00	
52.44	2799+84.80	EB	PL	57	12		57.00
52.44	2799+84.80	EB	DL	86	12	86.00	
52.46	2800+90.40	EB	CL	120	2		
53.21	2840+50.40	EB	CL	60	2		
53.65	2863+73.60	EB	CL	15	2		
45.50	2433+41.60	WB	DL	25	12	25.00	
46.06	2462+98.40	WB	CL	40	2		
46.09	2464+56.80	WB	CL	10	2		
46.11	2465+62.40	WB	CL	15	2		
46.60	2491+49.60	WB	DL	51	12	51.00	
48.60	2597+09.60	WB	CL	35	2		
48.62	2598+15.20	WB	CL	15	2		
48.67	2600+79.20	WB	CL	30	2		
51.88	2770+28.00	WB	DL	36	12	36.00	
51.94	2773+44.80	WB	DL	40	12	40.00	
51.95	2773+97.60	WB	DL	12	6	12.00	
SUBTOTAL						622	127

PAVEMENT MARKING SCHEDULE - FULL DEPTH PATCHING							
MILE POINT	STATION	DIRECTION	LANE	LENGTH	WIDTH	THERMOPLASTIC PAVEMENT MARKING - LINE 6"	THERMOPLASTIC PAVEMENT MARKING - LINE 6"
						YELLOW	WHITE
				FOOT	FOOT	FOOT	FOOT
46.09	2464+56.80	EB	DL	115	12	115.00	
46.09	2464+56.80	EB	PL	24	6		24.00
49.99	2670+48.80	EB	DL	10	12	10.00	
50.00	2671+01.60	EB	DL	87	12	87.00	
50.02	2672+07.20	EB	DL	50	12	50.00	
51.78	2765+00.00	EB	DL	8	12	8.00	
51.80	2766+05.60	EB	DL	10	12	10.00	
46.09	2464+56.80	WB	DL	12	12	12.00	
SUBTOTAL						292	24

PAVEMENT MARKING SCHEDULE - DRAINAGE			
MILE POINT	STATION	DIRECTION	THERMOPLASTIC PAVEMENT MARKING - LETTERS AND SYMBOLS
			SQ FT
46.10	2465+09.60	EB	2
46.10	2465+09.60	WB	2
50.00	2671+01.60	EB	2
TOTAL			6

SUMMARY OF THERMOPLASTIC PAVEMENT MARKING - LINE 6"	
USE:	FOOT
MICRO-SURFACING	24052
PARTIAL DEPTH PATCHES	749
FULL DEPTH PATCHES	316
TOTAL	25117

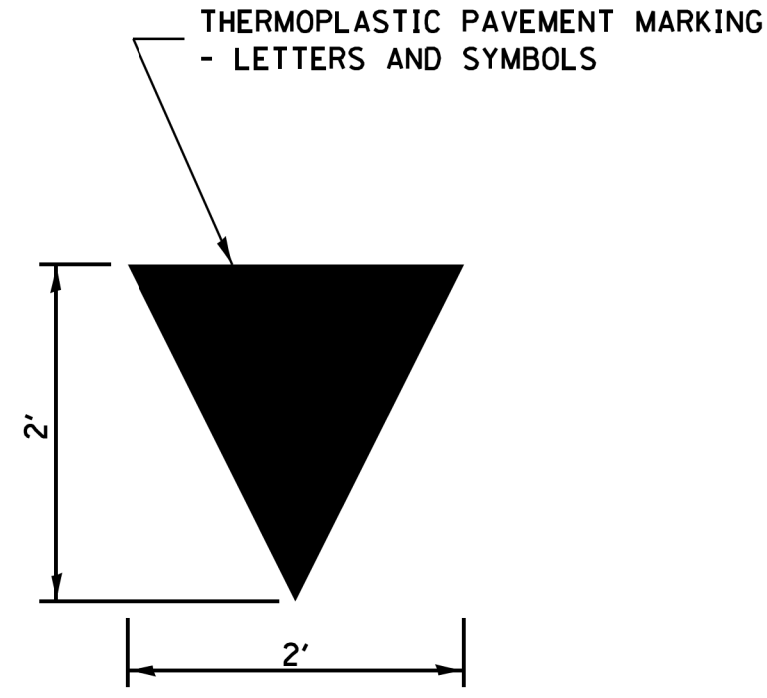
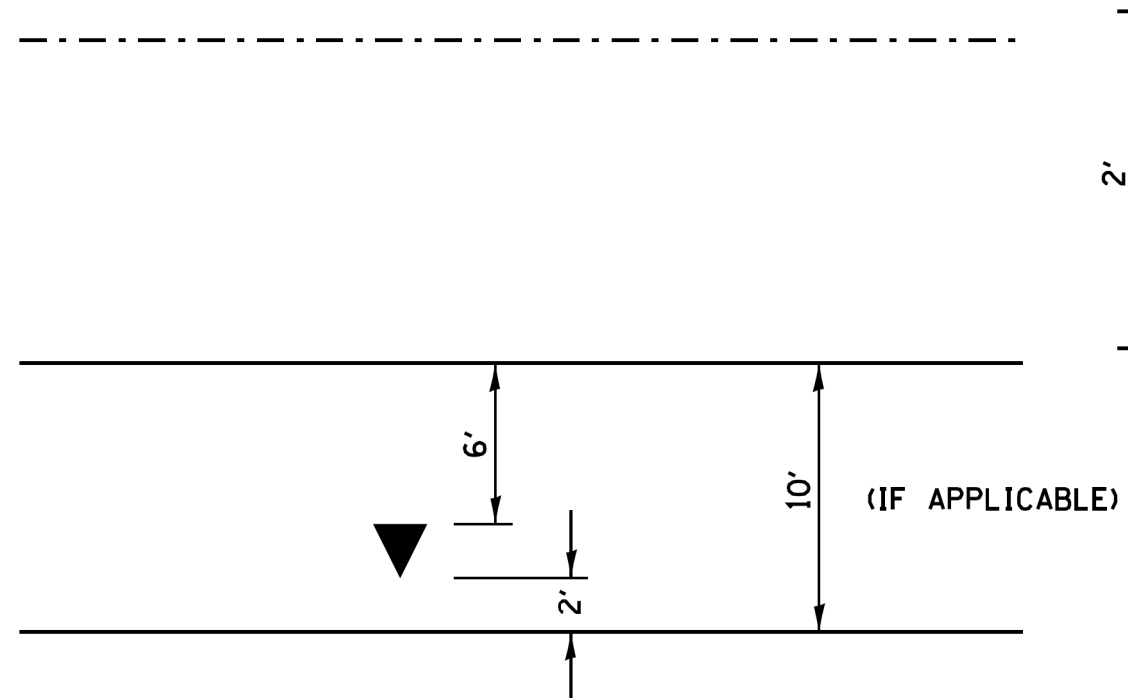
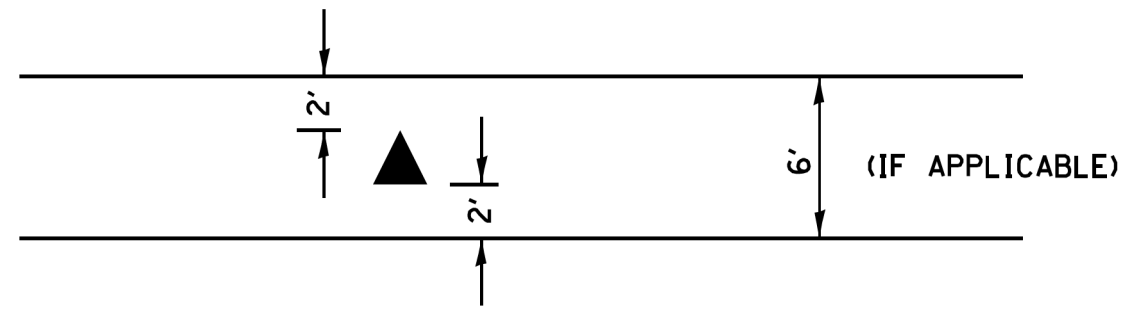
MODEL: Default
 FILE: \\nas010108@EIDNITC.illinois.gov\pww\DOT\Documents\DOT - Office\Director\B\Projects\087616\CAD\DATA\CAD\heest087616\4-17-18\pmschedule.dgn

USER NAME = leej	DESIGNED -	REVISED -
	DRAWN -	REVISED -
PLOT SCALE = 100.0000 ' / in.	CHECKED -	REVISED -
PLOT DATE = 5/10/2018	DATE -	REVISED -

STATE OF ILLINOIS
DEPARTMENT OF TRANSPORTATION

SCHEDULE OF QUANTITIES			
SCALE:	SHEET 4	OF 4 SHEETS	STA. TO STA.

F.A.I. RTE.	SECTION	COUNTY	TOTAL SHEETS	SHEET NO.
64	95-(3,4)PP-1	WASHINGTON	13	11
CONTRACT NO. 76L64				
ILLINOIS FED. AID PROJECT				



PIPE UNDERDRAIN OUTLET MARKING DETAIL

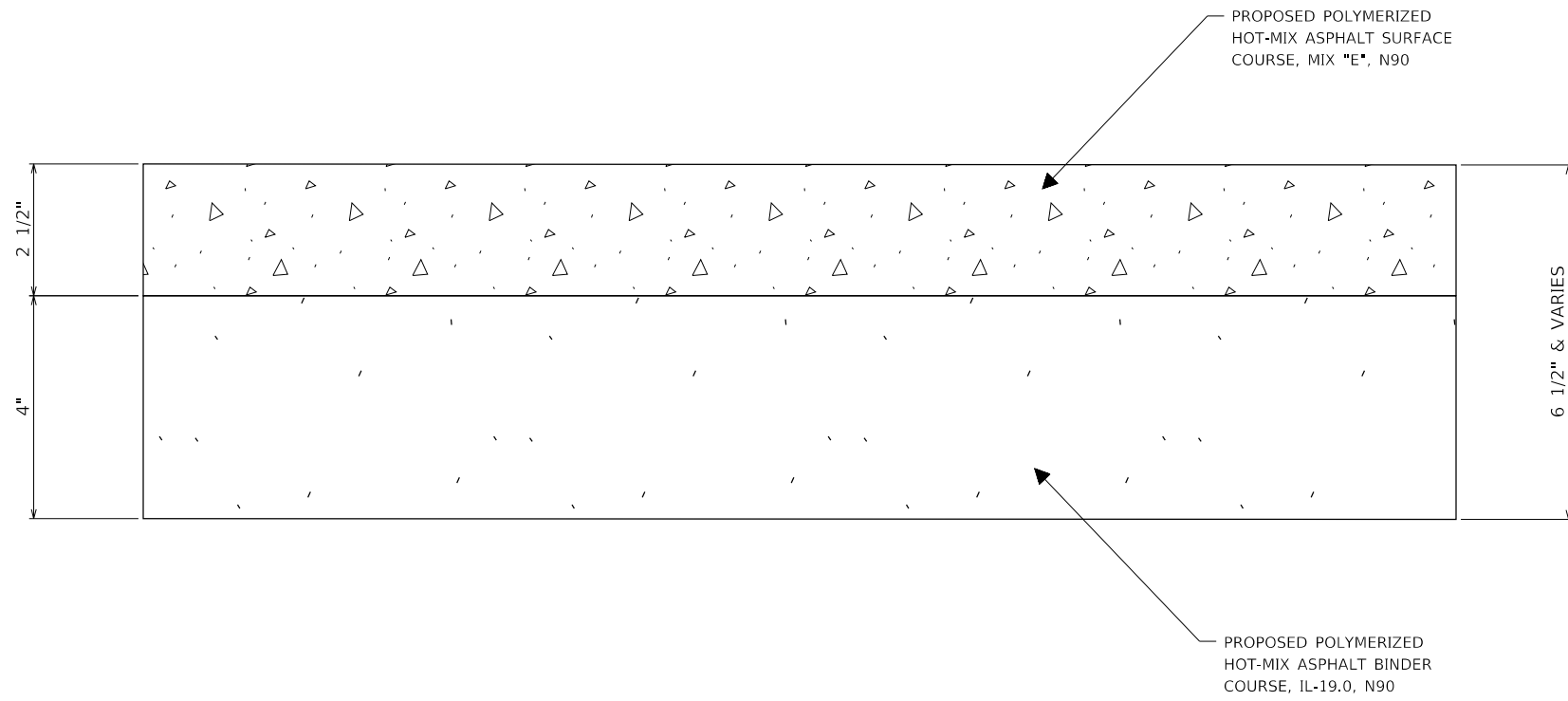
MODEL: Default
 FILE NAME: p:\u0008\BID\NTEC\Illinois\gov\PIV\DOT\Documents\DOT Office\DI\erct 8\Projects\087616\CAD\data\CAD\sheet\08761644r1.rvt.dgn

USER NAME = leej	DESIGNED -	REVISED -
	DRAWN -	REVISED -
PLOT SCALE = 100.0000 ' / in.	CHECKED -	REVISED -
PLOT DATE = 5/10/2018	DATE -	REVISED -

STATE OF ILLINOIS
DEPARTMENT OF TRANSPORTATION

PIPE UNDERDRAIN OUTLET MARKING DETAIL
 SCALE: SHEET 1 OF 1 SHEETS STA. TO STA.

F.A.I. RTE.	SECTION	COUNTY	TOTAL SHEETS	SHEET NO.
64	95-(3,4)PP-1	WASHINGTON	13	12
ILLINOIS FED. AID PROJECT			CONTRACT NO. 76L64	



PARTIAL DEPTH PATCH
(NOT DRAWN TO SCALE)

MODEL: Default
FILE: \\nas101.psu.edu\BID\NTEC\Illinois\gov\PI\DOT\Documents\DOT_Offices\Director\Projects\087616\CAD\data\CAD\sheet\087616\4-ft-misc.dgn

USER NAME = leej	DESIGNED -	REVISED -
	DRAWN -	REVISED -
PLOT SCALE = 100.0000' / in.	CHECKED -	REVISED -
PLOT DATE = 5/10/2018	DATE -	REVISED -

**STATE OF ILLINOIS
DEPARTMENT OF TRANSPORTATION**

PARTIAL DEPTH PATCHING DETAIL

SCALE: SHEET 1 OF 1 SHEETS STA. TO STA.

F.A.I. RTE.	SECTION	COUNTY	TOTAL SHEETS	SHEET NO.
64	95-(3,4)PP-1	WASHINGTON	13	13
CONTRACT NO. 76L64				
ILLINOIS FED. AID PROJECT				