

08-03-2018 LETTING ITEM 070

STATE OF ILLINOIS
DEPARTMENT OF TRANSPORTATION
DIVISION OF HIGHWAYS

S.B.I. RTE.	SECTION	COUNTY	TOTAL SHEETS	SHEET NO.
24	(L-15D-LBR)I	TAZEWELL	11	1
		ILLINOIS	CONTRACT NO. 68088	

FOR INDEX OF SHEETS, SEE SHEET NO. 2

HIGHWAY STANDARDS

000001-06	701201-04
701001-02	701301-04
701006-05	701901-07
701011-04	

PROPOSED
HIGHWAY PLANS

FAP 656 (IL 29)
SECTION (L-15D-LBR)I
SCOUR MITIGATION
TAZEWELL COUNTY

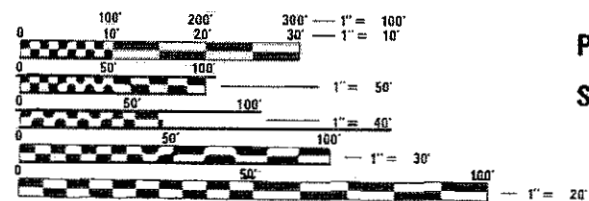
C-94-108-00

D-94-074-00



DESCRIPTION: SCOUR MITIGATION AT SN 090-0112
CARRYING IL 29 OVER LOST CREEK SOUTH OF PEKIN.

ADT = 5100 (2015)
SU = 8.8%
MU = 6.9%

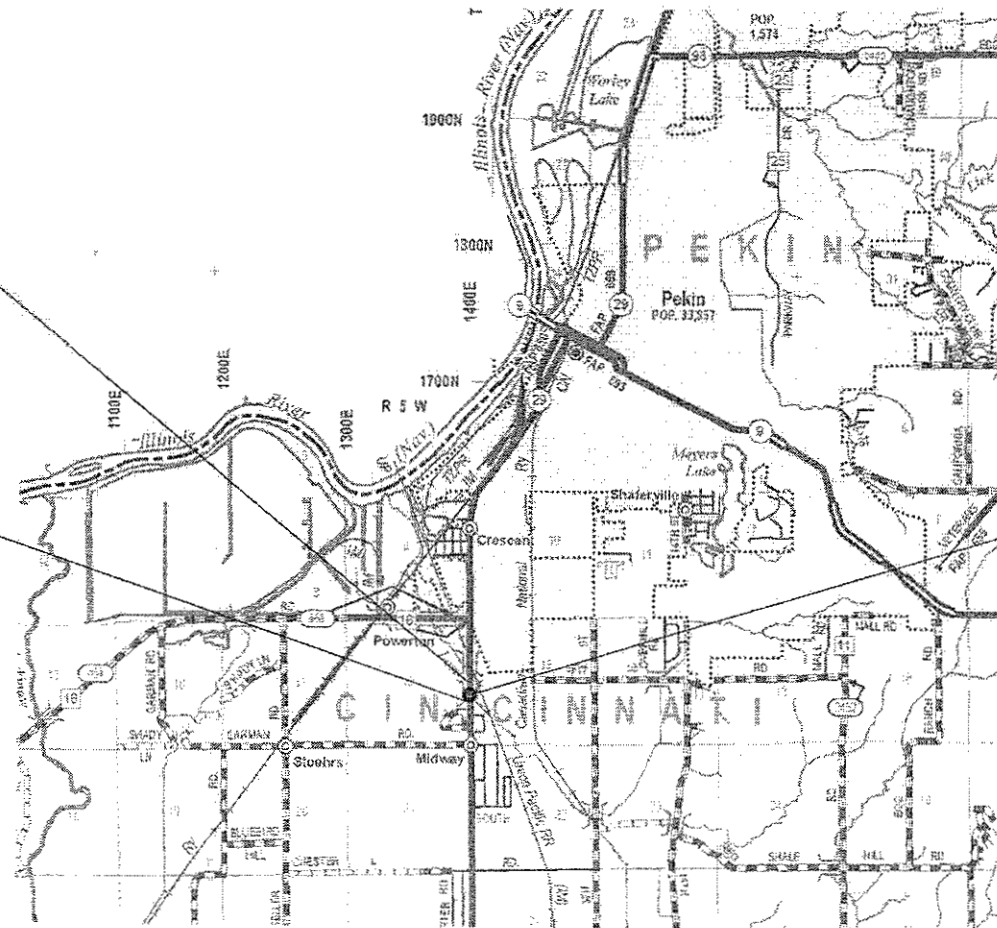


FULL SIZE PLANS HAVE BEEN PREPARED USING STANDARD
ENGINEERING SCALES. REDUCED SIZED PLANS WILL NOT
CONFORM TO STANDARD SCALES. IN MAKING MEASUREMENTS
ON REDUCED PLANS, THE ABOVE SCALES MAY BE USED.

J.U.L.I.E.
JOINT UTILITY LOCATION INFORMATION FOR EXCAVATION
1-800-892-0123
OR 811

PROJECT ENDS
STA 51+68

PROJECT BEGINS
STA 48+78



SN 090-0112

GROSS LENGTH = 290 FT. = 0.055 MILES
NET LENGTH = 290 FT. = 0.055 MILES

STATE OF ILLINOIS
DEPARTMENT OF TRANSPORTATION
DIVISION OF HIGHWAYS

SUBMITTED June 28 2018

[Signature]
REGION THREE ENGINEER

June 29 2018
[Signature]
ENGINEER OF DESIGN AND ENVIRONMENT

June 29 2018
[Signature]
DIRECTOR OF HIGHWAYS PROJECT IMPLEMENTATION 3

PRINTED BY THE AUTHORITY
OF THE STATE OF ILLINOIS

PROJECT ENGINEER: NICHOLAS JACK
PROJECT DESIGNER: ANTONIO LOPEZ DIAZ
CATALOG NO: 032284-00D
CONTRACT NO. 68088

INDEX OF SHEETS

- 1. COVER SHEET
- 2. GENERAL NOTES AND PROJECT SPECIFIC NOTES
- 3-4. SUMMARY OF QUANTITIES
- 5. SCHEDULE OF QUANTITIES
- 6. GENERAL LOCATION
- 7. PLAN & ELEVATION
- 8. PROPOSED SITE PLAN
- 9. CONSTRUCTION PLACEMENT DETAILS
- 10. PIER 1 REPAIR DETAILS
- 11. CROSS SECTIONS

GENERAL NOTES

PLAN ELEVATIONS - U.S.G.S. MEAN SEA LEVEL DATUM
 All elevations shown on the plans are established from U.S.G.S. mean sea level datum.

PROPERTY OWNER ACCESS REQUIREMENT
 Access must be maintained to all existing properties during construction per Article 107.09 unless arrangements are made in writing by the Contractor with the property owners with a copy to the Engineer for short-term closures.

PROJECT SPECIFIC NOTES

- 1. Plan dimensions and details relative to the existing structure (including High Water Elevation) have been taken from existing plans and are subject to nominal construction variations. It shall be the Contractor's responsibility to verify such dimensions and details in the field and make necessary approved adjustments prior to construction or ordering of materials. Such variations shall not be cause for additional compensation for a change in the scope of the work. However, the Contractor will be paid for the quantity actually furnished at the unit price bid for the work.
- 2. All row acquisition for this project is based off of the legal centerline of IL 29 stationing as recorded on land plat. For construction purposes the plans herein are based off of actual bridge and pavement centerline stationing.
- 3. The Contractor shall be responsible for diverting the water flow from the construction site. The Contractor may use either method of dewatering as described in the Dewatering Special Provision.
- 4. Due to the changing nature of the streambed at the structure being protected, the cross-sections used at each structure may not be representative of existing field conditions. Layout of scour protection systems may be varied in the field to suit ground conditions as directed by the engineer.
- 5. All areas disturbed during construction shall be graded, fertilized, seeded and mulched as directed by the Engineer. Section 250s and 251 of the Standard Specifications shall govern this work.
- 6. It is anticipated that the majority of this work will not require highway traffic lane closures. Lane closures will be permitted on a limited basis and are restricted to one-lane daytime only closures in accordance to IDOT Standards 701201 and 701301.
- 7. The locations of existing water mains, gas mains, sewers, electric power lines, telephones lines and other utilities as shown on the plans are based on careful field investigation and the best information available, but they are not guaranteed. Unless elevations are shown - - - all utility locations shown on the cross sections are based on the approximate depth supplied by the utility company. It shall be the Contractor's responsibility to ascertain their exact location from the utility companies and by field inspection.
- 8. The contractor shall get the existing underground utilities located. Where existing underground utilities conflict with riprap placement, the contractor shall adjust the layout as directed by the Engineer.

FILE NAME =	USER NAME = jonesca	DESIGNED -	REVISED -	STATE OF ILLINOIS DEPARTMENT OF TRANSPORTATION	GENERAL NOTES	F.A.P. RTE.	SECTION	COUNTY	TOTAL SHEETS	SHEET NO.
D:\common\CEH\Transfer - bureau\Bridges\plans\CAD02\BCR's and SCOUR\SCOUR\68088	08/27/2018	08/27/2018	08/27/2018			656	IL-15D-LBR1	TAZEWELL	11	2
01 CPE	PLOT SCALE = 30.0000' / 1" =	CHECKED -	REVISED -			CONTRACT NO. 68088				
	PLOT DATE = 8/27/2018	DATE -	REVISED -	SCALE:	SHEET	OF	SHEETS	STA.	TO STA.	ILLINOIS FED. AID PROJECT

CHANNEL EXCAVATION

LOCATION	UNIT	QUANTITY
STA. 48+78 RT. to STA. 50+62	CuYd	625
Channel + Embankments		
Total		625

SEEDING, CLASS 2

LOCATION	UNIT	QUANTITY
Streamside Embankments	Acre	0.1
Total		0.1

NITROGEN FERTILIZER NUTRIENT

LOCATION	UNIT	QUANTITY
Streamside Embankments	Pound	27
Total		27

PHOSPHORUS FERTILIZER NUTRIENT

LOCATION	UNIT	QUANTITY
Streamside Embankments	Pound	27
Total		27

POTASSIUM FERTILIZER NUTRIENT

LOCATION	UNIT	QUANTITY
Streamside Embankments	Pound	27
Total		27

TURF REINFORCEMENT MAT

LOCATION	UNIT	QUANTITY
Streamside Embankments	SqYd	530
Total		530

TEMPORARY DITCH CHECKS

LOCATION	UNIT	QUANTITY
DS of Channel Ex	Foot	80
Total		80

PERIMETER EROSION BARRIER

LOCATION	UNIT	QUANTITY
Top of Embankments & DS Sta. ±48+98 Rt. 75'	Foot	400
Total		400

STONE RIPRAP, CLASS A4

LOCATION	UNIT	QUANTITY
STA. 48+88 RT.38 to STA. 50+08 Rt.38	SqYd	95
Total		95

STONE RIPRAP, CLASS A6

LOCATION	UNIT	QUANTITY
STA. 48+78 RT. to STA. 50+25 Lt.	SqYd	590
Total		590

FILTER FABRIC

LOCATION	UNIT	QUANTITY
Under all Riprap Placement	SqYd	700
Total		700

REMOVAL OF EXISTING STRUCTURES

LOCATION	UNIT	QUANTITY
E. of Bridge Channel	Each	1
Total		1

NON-SPECIAL WASTE DISPOSAL

LOCATION	UNIT	QUANTITY
* Project Site	CuYd	1000
Total		1000

* See Final Preliminary Site Investigations Report Memorandum

SPECIAL WASTE PLANS & REPORT

LOCATION	UNIT	QUANTITY
Project Site	Each	1
Total		1

SOIL DISPOSAL ANALYSIS

LOCATION	UNIT	QUANTITY
Project Site	Each	3
Total		3

MOBILIZATION

LOCATION	UNIT	QUANTITY
Project Site	Lsum	1
Total		1

T. C. & P. STANDARD 701201

LOCATION	UNIT	QUANTITY
Project Roadway Location	Lsum	1
Total		1

DEWATERING STRUCTURE NO. 1

LOCATION	UNIT	QUANTITY
Channel Work Area	Each	1
Total		1

STRUCTURAL REPAIR OF CONCRETE

LOCATION	UNIT	QUANTITY
P1 - Exposed Pile Locations Facing Channel	SqFt	20
Total		20

PLUG EXISTING DECK CRAINS

LOCATION	UNIT	QUANTITY
DECK - Base of Parapets	Each	20
Total		20



FILE NAME = I:\env\ID468288-CADD.dgn
 USER NAME = jonesco
 PLOT SCALE = 100.0000 / 1" = 100'
 PLOT DATE = 1/26/2017

DESIGNED -
 DRAWN -
 CHECKED -
 DATE -

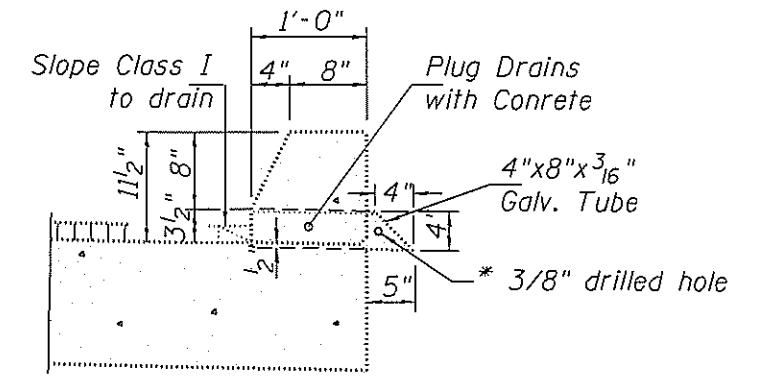
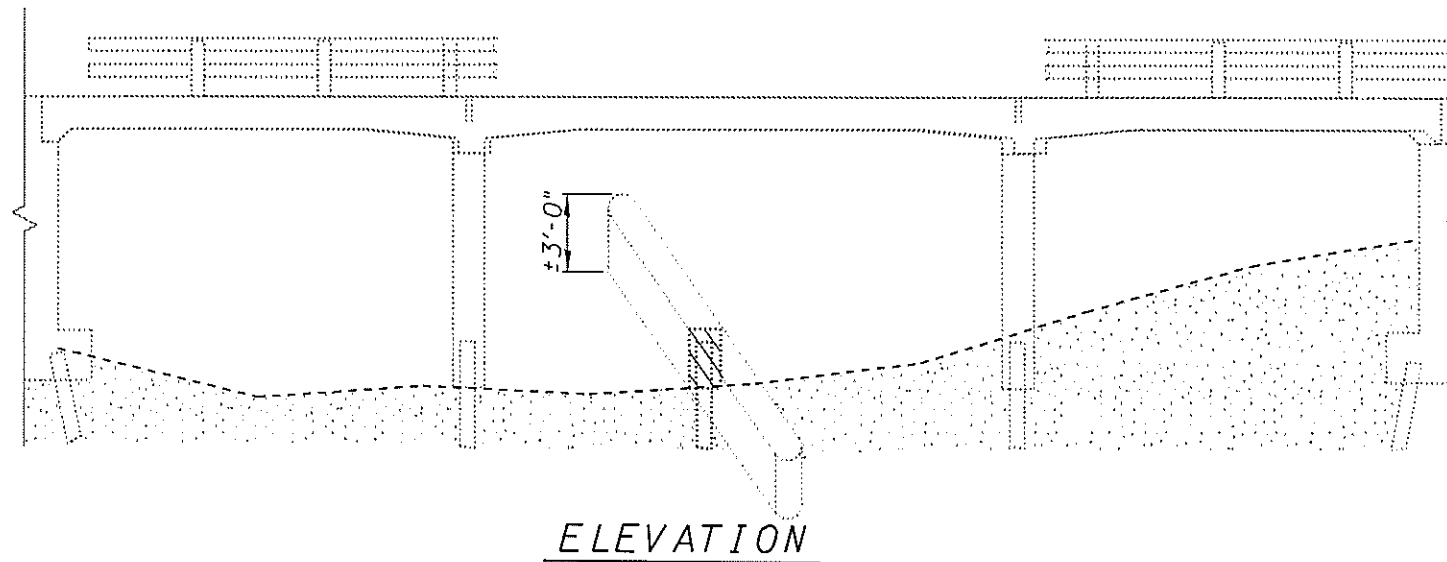
REVISED -
 REVISED -
 REVISED -
 REVISED -

STATE OF ILLINOIS
 DEPARTMENT OF TRANSPORTATION

GENERAL LOCATION

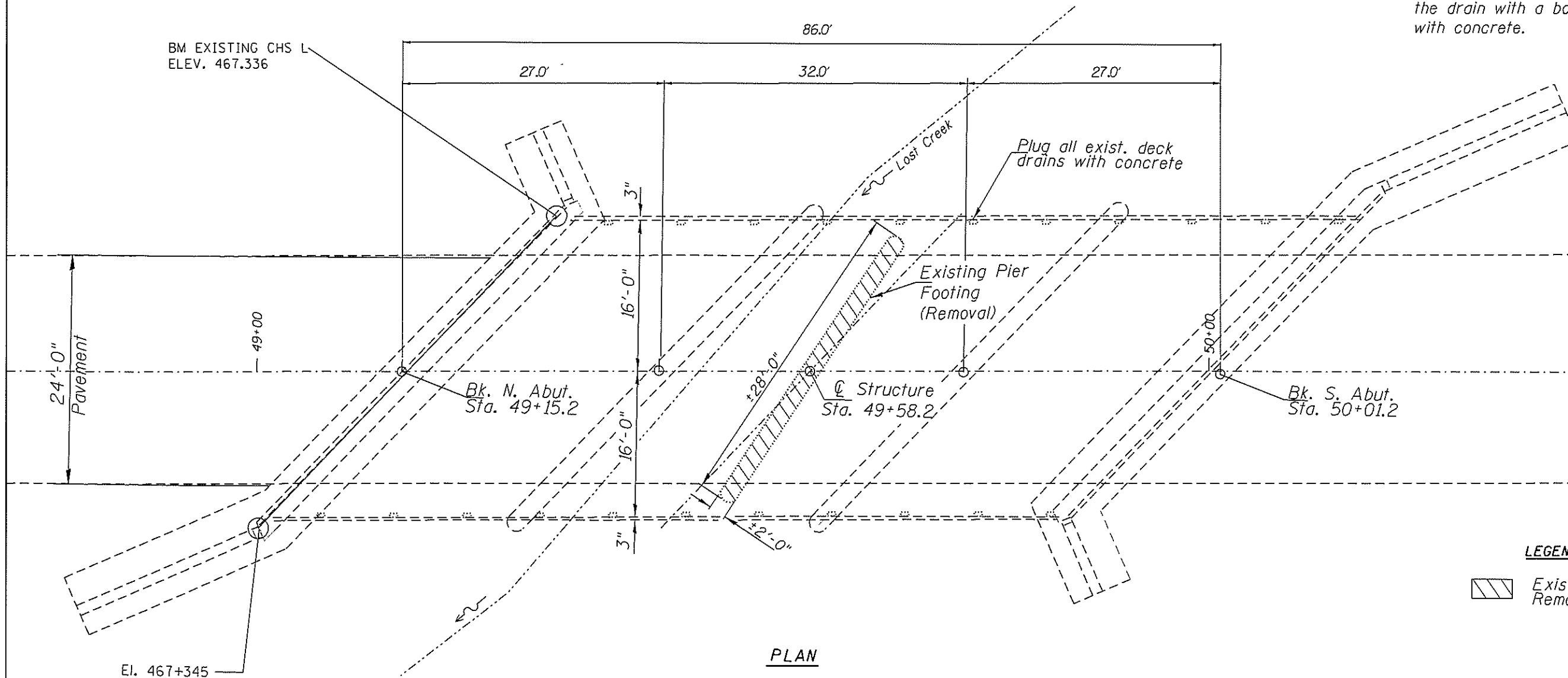
SCALE: SHEET OF SHEETS STA. TO STA.

F.A.P. RTE.	SECTION	COUNTY	TOTAL SHEETS	SHEET NO.
656	(L-150-LBR)	TAZEWELL	12	6
CONTRACT NO. 68088			ILLINOIS FED. AID PROJECT	



* Field drill 3/8" hole for 1/4" ϕ threaded rod 13" long with nuts & washers.

Clean and coat the interior surface of the drain with a bonding agent and plug with concrete.



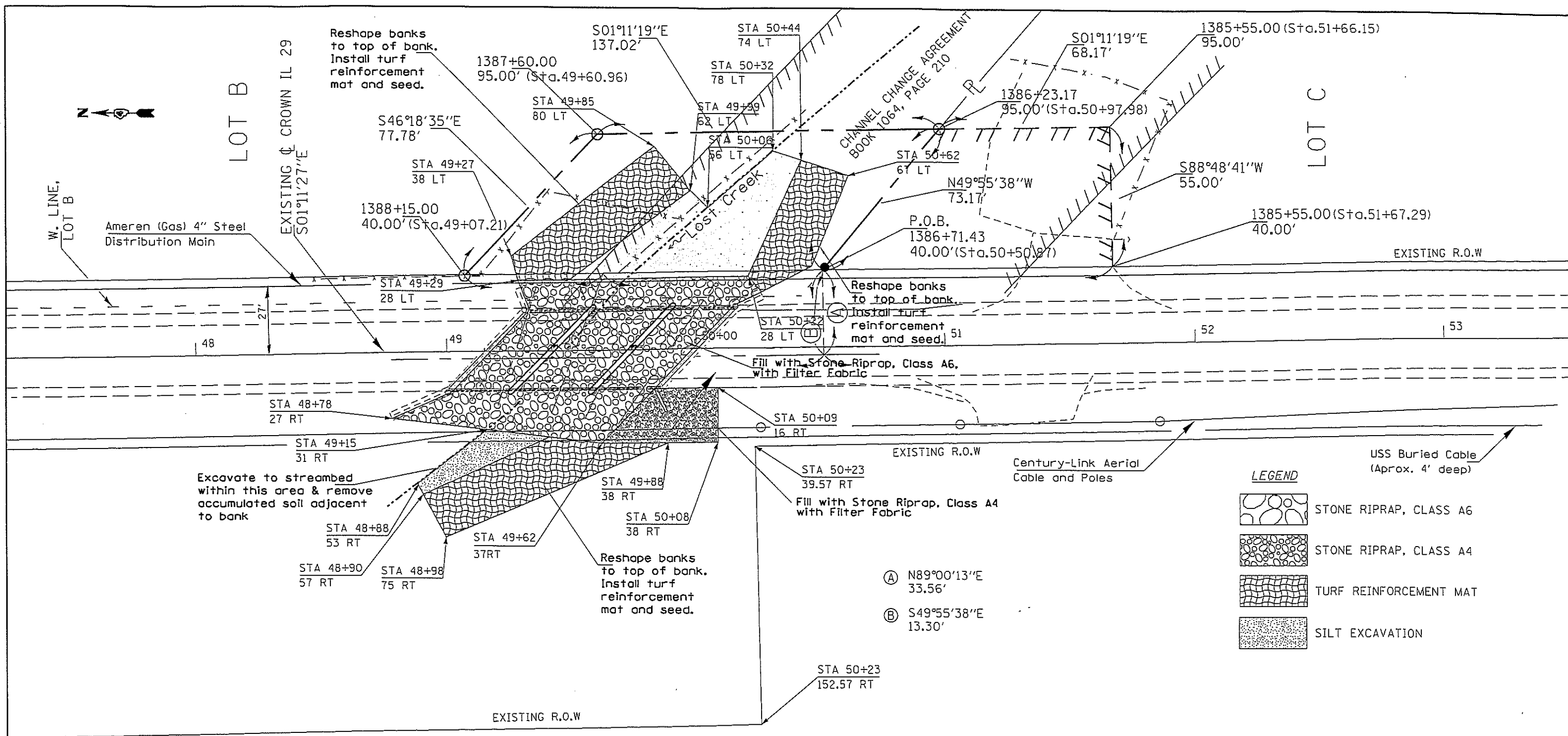
LEGEND
 Existing Structure Removal

FILE NAME =	USER NAME = jonasec	DESIGNED -	REVISED -
D:\common\DEN\Transfer - bureau\Bridges\plans\CADD2\BCR's and SCOUR\SCOUR\68088 DPE\W\LostCreek\Plans\LostCreekPLAN.dgn		CHECKED -	REVISED -
01 DPE	PLOT DATE = 6/27/2018	DATE -	REVISED -

**STATE OF ILLINOIS
DEPARTMENT OF TRANSPORTATION**

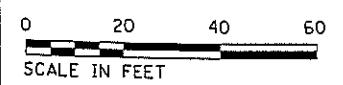
PLAN AND ELEVATION STRUCTURE NO. 090-0112			
SCALE:	SHEET	OF SHEETS	STA. TO STA.

F.A.P. RTE.	SECTION	COUNTY	TOTAL SHEETS	SHEET NO.
656	(L-150-LBR)	TAZEWELL	11	7
SCOUR MITIGATION PLAN		CONTRACT NO. 68088		
ILLINOIS FED. AID PROJECT				



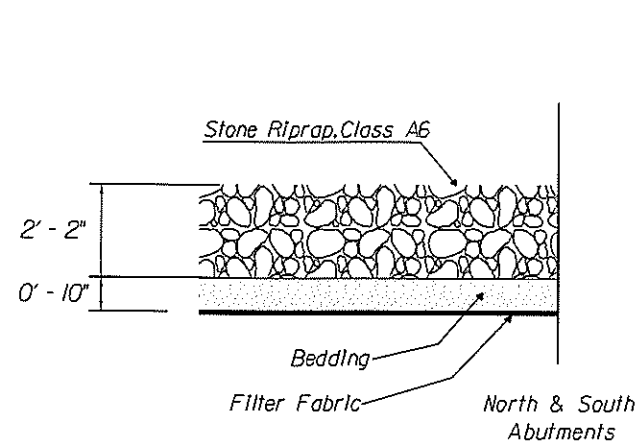
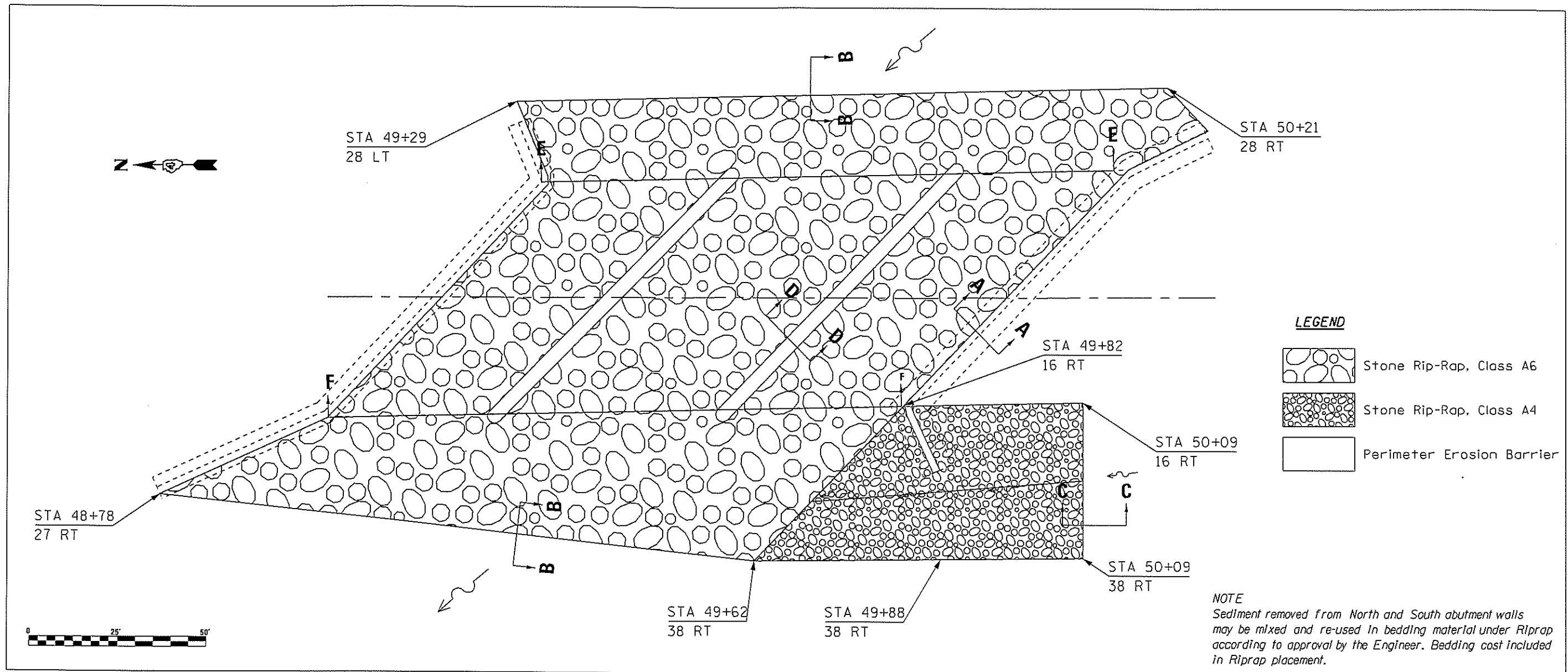
LEGEND

	STONE RIPRAP, CLASS A6
	STONE RIPRAP, CLASS A4
	TURF REINFORCEMENT MAT
	SILT EXCAVATION

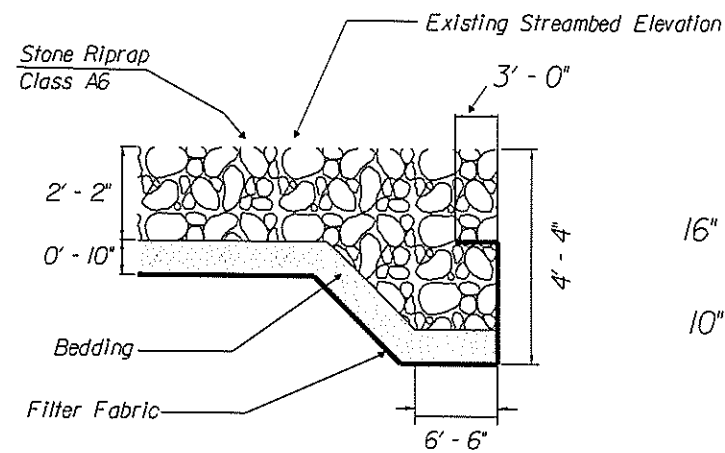


NOTE: STRUCTURE NUMBER 090-112 CONSISTS OF A THREE SPAN CAST IN PLACE CONCRETE SLAB BRIDGE SUPPORTED ON CLOSED REINFORCED CONCRETE ABUTMENTS AND TWO SOLID REINFORCED CONCRETE PIERS

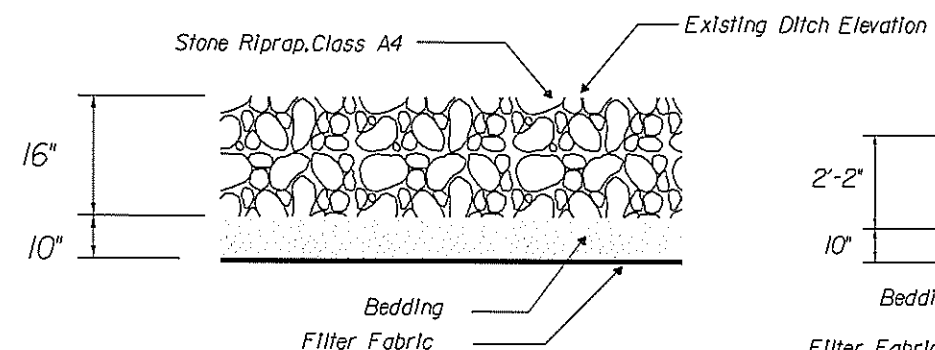
FILE NAME =	USER NAME = jonesce	DESIGNED -	REVISED -	STATE OF ILLINOIS DEPARTMENT OF TRANSPORTATION	PROPOSED SITE PLAN			F.A.P. RTE.	SECTION	COUNTY	TOTAL SHEETS	SHEET NO.
S:\GEN\DRIFT\STD\PLNS\Bridges\Bridges and SCOUR\SCOUR\68088 5N890-0112 LostCrk	DRAWN by: ID488888-CA00.dgn	CHECKED -	REVISED -					656	(L-15D-LBRI)	TAZEWELL	11	8
PLOT SCALE = 100.0000' / 1"	DATE -	REVISED -	REVISED -					CONTRACT NO. 68088				
PLOT DATE = 6/14/2017	DATE -	REVISED -	REVISED -					ILLINOIS FED. AID PROJECT				
				SCALE:	SHEET	OF	SHEETS	STA.	TO	STA.		



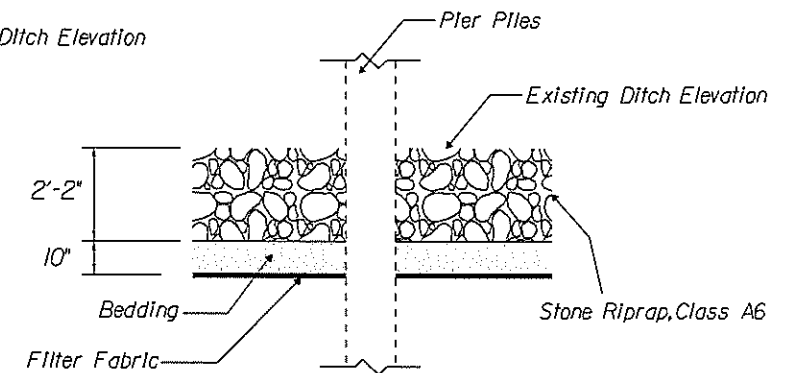
SECTION A - A



SECTION B - B



SECTION C - C



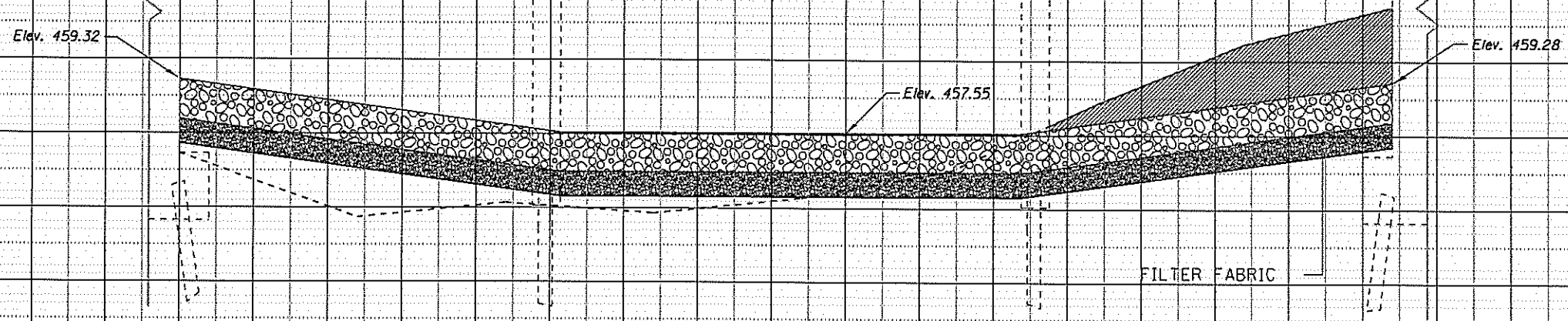
SECTION D - D

FILE NAME *	USER NAME * jonesc	DESIGNED -	REVISD -	STATE OF ILLINOIS DEPARTMENT OF TRANSPORTATION	RIPRAP DETAILS STRUCTURE NO. 090-0112			F.A.P. RTE.	SECTION	COUNTY	TOTAL SHEETS	SHEET NO.
D:\common\GEN\Transfer - bureau\Bridg	plans\CA002\BCR's and SCOUR\SCOUR\68088	090-0112	090-0112					655	(L-150-LBR)	TAZEWELL	11	9
PLOT SCALE = 30.0000' / in.	CHECKED -	REVISD -	REVISD -					CONTRACT NO. 68088			ILLINOIS FED. AID PROJECT	
01 GPE	PLOT DATE = 8/27/2018	DATE -	REVISD -					SCALE:	SHEET	OF	SHEETS	STA.

DATE	
BY	
DESIGNED	
CHECKED	
ALIGNED	
NOTED	
NO.	

DATE	
BY	
DESIGNED	
CHECKED	
STRUCTURE	
NOTING	
NO.	

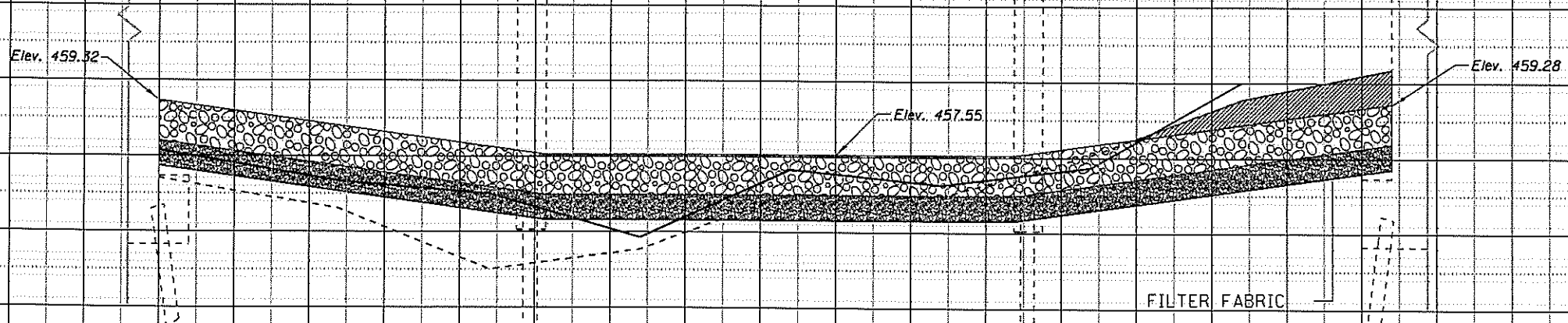
SECTION E - E
UPSTREAM
LOOKING EAST



LEGEND

	STONE RIPRAP, CLASS A6
	STONE RIPRAP, CLASS A4
	CHANNEL EXCAVATION

SECTION F - F
DOWNSTREAM
LOOKING EAST



FILE NAME =	USER NAME = jonesc	DESIGNED -	REVISED -	STATE OF ILLINOIS DEPARTMENT OF TRANSPORTATION	CROSS SECTIONS STRUCTURE NO. 090-0112	F.A. RTE.	SECTION	COUNTY	TOTAL SHEETS	SHEET NO.	
D:\common\GEN\Transfer - bureau\Bridg	lana\CA002\BCR's and SCOUR\SCOUR\68088 090	DRAWN	REVISED			656	(IL-15D-LBR)	TAZEWELL	11	11	
	PLOT SCALE = 30.0020 ' / in.	CHECKED -	REVISED -			CONTRACT NO. 68088					
01 GPE	PLOT DATE = 6/27/2018	DATE -	REVISED -			ILLINOIS FED. AID PROJECT					