

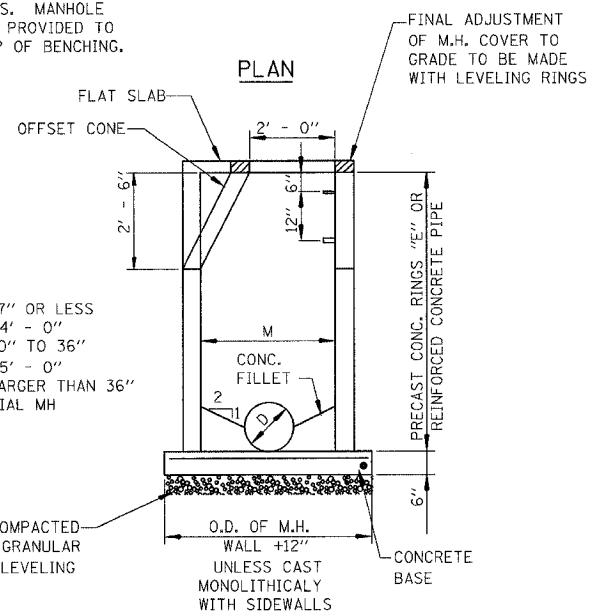
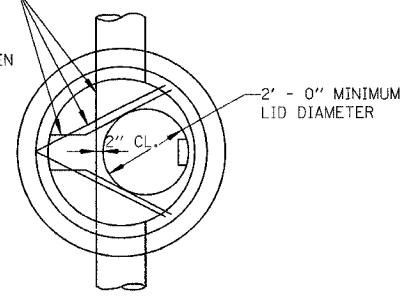
F.A. DIST. NO.	SECTION	COUNTY	TOTAL SHEETS	SHEET NO.
8435	06-00054-00-PV	FAYETTE	21	12
STA.	TO STA.			
FED. ROAD DIST. NO.	ILLINOIS	FED. AID PROJECT		
CONTRACT NO. 95483				

#5 REINFORCING IN 7" SLAB ON SHALLOW MANHOLES WHERE CONE IS OMITTED

THE CONE IS OMITTED AND A SLAB, AS SHOWN, IS USED WHEN THE E DIMENSION IS LESS THAN:

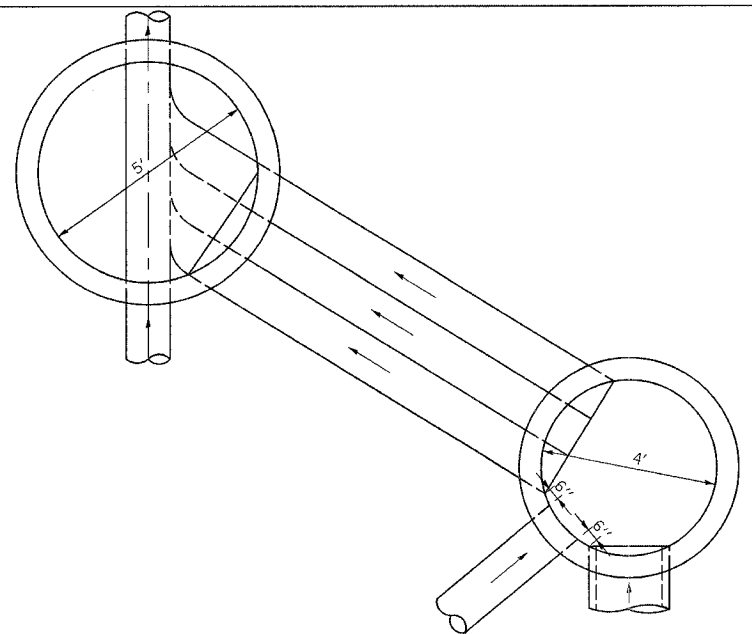
EFFLUENT E	SEWER
5' - 0"	8"
5' - 2"	10"
5' - 4"	12"
5' - 7"	15"
5' - 10"	18"

NOTE: SEE SPECS. FOR FRAME COVER AND STEPS. MANHOLE STEPS SHALL BE PROVIDED WITH 12" OF TOP OF BENCHING.

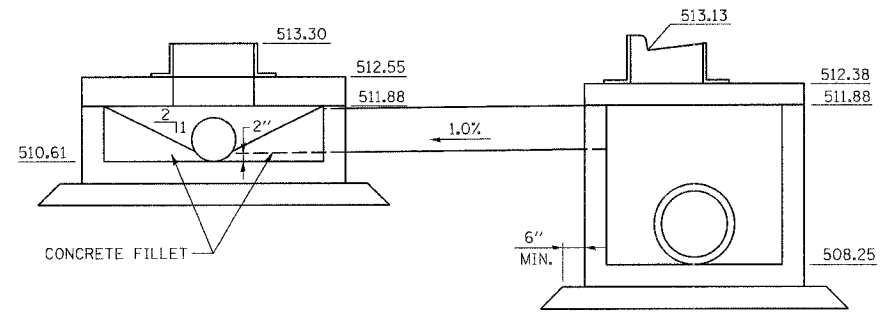


FOR "D" 27" OR LESS
M = 4' - 0"
FOR "D" 30" TO 36"
M = 5' - 0"
FOR "D" LARGER THAN 36"
SPECIAL MH

SECTION
SANITARY MANHOLE

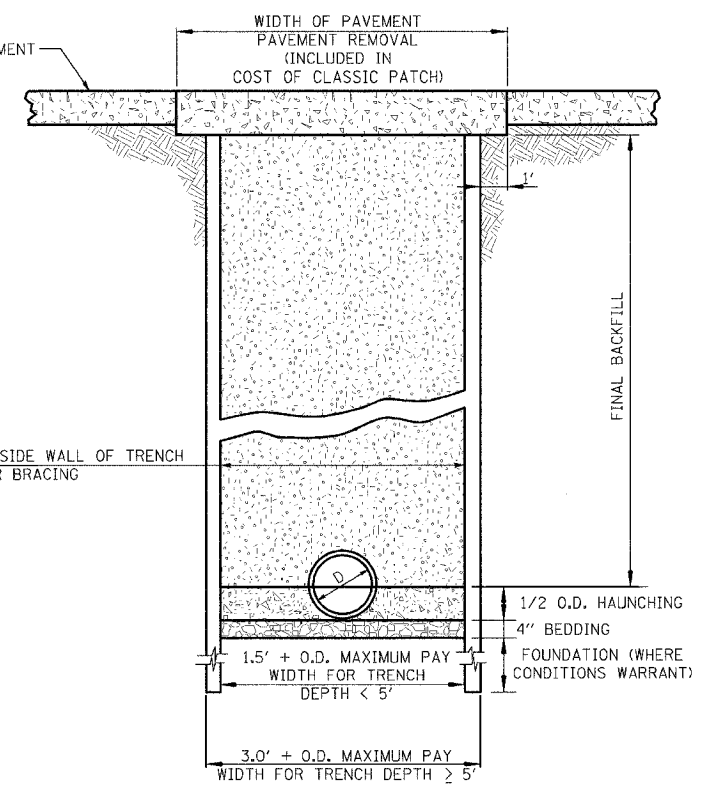


PLAN VIEW



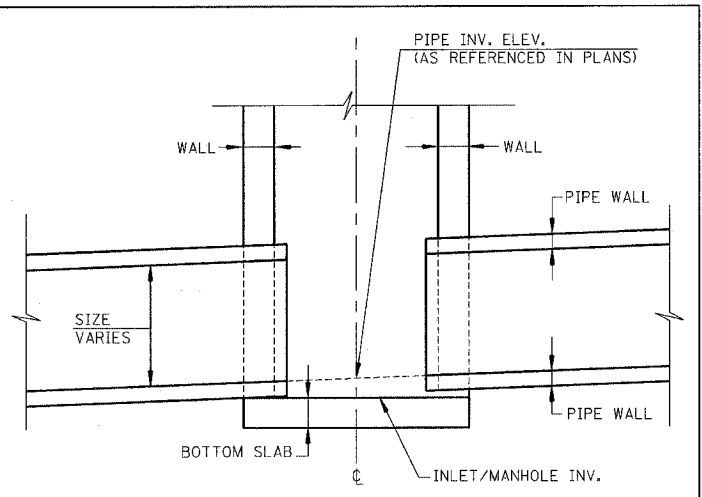
SECTION

RESTRICTED DEPTH MANHOLES, 5' - DIAMETER, TYPE 1 FRAME, CLOSED LID
RESTRICTED DEPTH MANHOLES, 4' - DIAMETER, TYPE 3V FRAME & GRATE

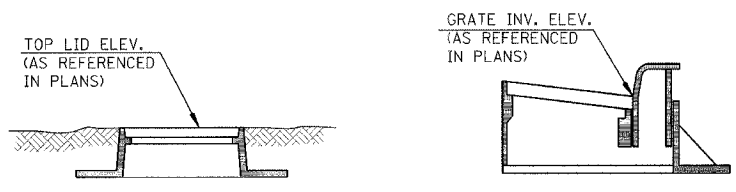


TRENCHING DETAIL

- BEDDING**
CA 6 REQUIRED IN ALL LOCATIONS (INCLUDED IN THE COST OF PIPE)
- HAUNCHING**
CA 6 REQUIRED IN ALL LOCATIONS (INCLUDED IN THE COST OF PIPE)
- FINAL BACKFILL**
CA 6 REQUIRED IN ALL LOCATIONS WHERE THE EDGE OF THE TRENCH IS LOCATED WITHIN TWO (2) FEET OF A PERMANENT SURFACE, INCLUDING DRIVEWAYS AND SIDEWALK AND IN ALL LOCATIONS WHERE EXISTING MAINS AND APPURTENANCES ARE TO BE REMOVED. CA-6 PAID FOR AS TRENCH BACKFILL, SPECIAL.
CASE I BACKFILL FREE FROM ORGANICS AT ALL OTHER LOCATIONS (INCLUDED IN THE COST OF PIPE)



TYPICAL INLET/MANHOLE ELEVATION REFERENCE DETAIL



FRAME AND LID TYPE 1
FRAME AND GRATE TYPE 3 & 3V
TYPICAL LID/GRATE ELEVATION REFERENCE DETAIL

NOTE: ALL MANHOLE/INLET RELATED STATION/OFFSET CALLOUTS ARE REFERENCED TO THE CENTER OF GRATE OR LID (2' OPENING) ON TOP.

REVISIONS	
NAME	DATE

ILLINOIS DEPARTMENT OF TRANSPORTATION

MISCELLANEOUS DETAILS

SCALE: VERT. _____
HORIZ. _____

DATE _____

DRAWN BY _____
CHECKED BY _____
E.D.W.

CADD FILE: 4812/572L.dwg
PLOTTED: 5/5/2006

H.M. & S. NO. 5721