

STATE OF ILLINOIS  
DEPARTMENT OF TRANSPORTATION

F.A.I. RTE.	SECTION	COUNTY	TOTAL SHEETS	SHEET NO.
90	2015-0741	COOK	14	1
FED. ROAD DIST. NO.	ILLINOIS	CONTRACT NO. 62B58		

# PROPOSED HIGHWAY PLANS

FAI ROUTE 90: (KENNEDY EXPRESSWAY)  
IL 43 (HARLEM AVE) TO I-94 (EDENS EXPY)  
MILLED RUMBLE STRIPS AND GUARDRAIL  
SECTION: 2015-0741  
PROJECT: HSIP-0090(404)  
COOK COUNTY  
C-91-059-16

FOR INDEX OF SHEETS, SEE SHEET NO. 2

**TRAFFIC DATA**

SPEED LIMIT: 55 M.P.H.  
ADT: 137,100-184,100 (2015)

D-91-059-16



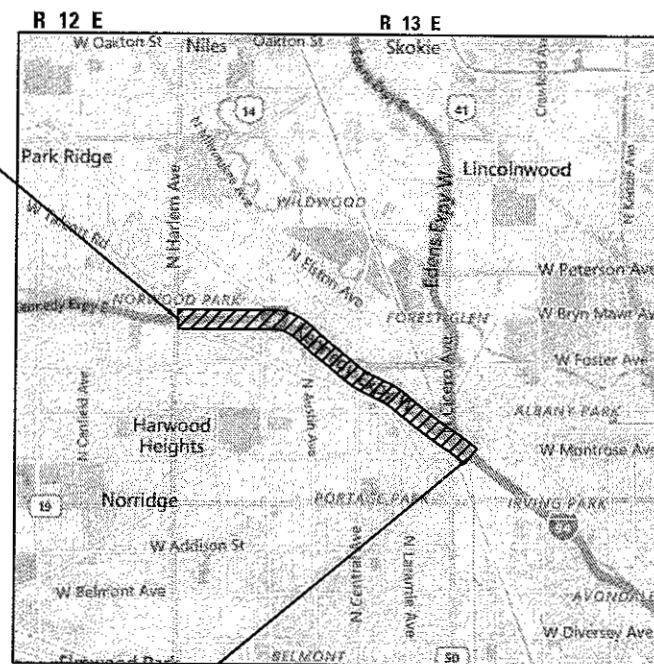
LOCATION OF SECTION INDICATED THUS: - [black rectangle] -

**LOCATION MAP**

N.T.S.



PROJECT BEGINS  
STA. 3465 + 17.28



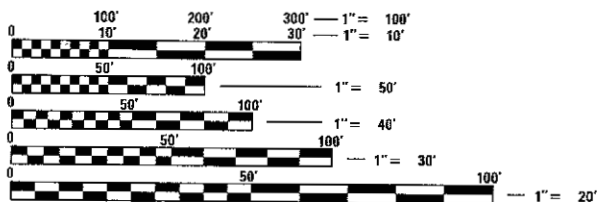
PROJECT ENDS  
STA. 3664 + 12.94

GROSS LENGTH OF PROJECT = 19,896 FT = 3.768 MI  
NET LENGTH OF PROJECT = 19,896 FT = 3.768 MI

THE PROJECT IS LOCATED  
WITHIN THE CITY OF CHICAGO



430 NORTH FRONT STREET, SUITE 100 | McHENRY, ILLINOIS 60050  
Phone: 815.365.1779 | Toll Free: 800.728.7805 | Fax: 815.385.1781 | HRGreen.com  
ILLINOIS PROFESSIONAL DESIGN FIRM #184-001322



FULL SIZE PLANS HAVE BEEN PREPARED USING STANDARD  
ENGINEERING SCALES. REDUCED SIZED PLANS WILL NOT  
CONFORM TO STANDARD SCALES. IN MAKING MEASUREMENTS  
ON REDUCED PLANS, THE ABOVE SCALES MAY BE USED.

DIGGER  
CHICAGO UTILITY ALERT NETWORK  
1-312-744-7000

J.U.L.I.E.  
JOINT UTILITY LOCATION INFORMATION FOR EXCAVATION  
1-800-892-0123  
OR 811

PROJECT ENGINEER: BENJAMIN HARTMAN (815) 385-1778

PROJECT MANAGER: DANIEL WILGREEN (847) 705-4240

CONTRACT NO. 62B58

STATE OF ILLINOIS  
DEPARTMENT OF TRANSPORTATION

SUBMITTED May 18 2017  
[Signature] REGIONAL ENGINEER  
June 30 2017  
Maureen M. Addis, P.E.  
ENGINEER OF DESIGN AND ENVIRONMENT  
June 30 2017  
[Signature] 2  
DIRECTOR OF PROGRAM DEVELOPMENT

PROFESSIONAL ENGINEER'S SIGN & SEAL

[Signature]  
BENJAMIN D. HARTMAN, P.E.  
EXPIRES: 11-30-2017



PRINTED BY THE AUTHORITY  
OF THE STATE OF ILLINOIS

**INDEX OF SHEETS**

1	COVER SHEET
2	INDEX OF SHEETS, LIST OF STATE STANDARDS, AND GENERAL NOTES
3	SUMMARY OF QUANTITIES
4-10	ROADWAY PLANS
11-12	GUARDRAIL IMPROVEMENT PLANS
13	ENTRANCE AND EXIT RAMP CLOSURE DETAILS (TC 08)
14	TRAFFIC CONTROL DETAILS FOR FREEWAY SHOULDER CLOSURES AND PARTIAL RAMP CLOSURES (TC 17)

**LIST OF STATE STANDARDS**

STANDARD NO.	DESCRIPTION
000001-06	STANDARD SYMBOLS, ABBREVIATIONS AND PATTERNS
630001-11	STEEL PLATE BEAM GUARDRAIL
631011-10	TRAFFIC BARRIER TERMINAL TYPE 2
631031-15	TRAFFIC BARRIER TERMINAL TYPE 6
635001-02	DELINEATORS
642001-02	SHOULDER RUMBLE STRIPS, 16 IN.
701400-09	APPROACH TO LANE CLOSURE, FREEWAY/EXPRESSWAY
701401-10	LANE CLOSURE, FREEWAY/EXPRESSWAY
701411-09	LANE CLOSURE, MULTILANE, AT ENTRANCE OR EXIT RAMP FOR SPEEDS >= 45 MPH
701428-01	TRAFFIC CONTROL SETUP AND REMOVAL FREEWAY/EXPRESSWAY
701901-06	TRAFFIC CONTROL DEVICES
720001-01	SIGN PANEL MOUNTING DETAILS
720006-04	SIGN PANEL ERECTION DETAILS
720011-01	METAL POSTS FOR SIGNS, MARKERS & DELINEATORS
780001-05	TYPICAL PAVEMENT MARKINGS
782006	GUARDRAIL AND BARRIER WALL REFLECTOR MOUNTING DETAILS

**GENERAL NOTES**

- BEFORE STARTING ANY EXCAVATION, THE CONTRACTOR SHALL CALL "JULIE" (JOINT UTILITY LOCATION INFORMATION FOR EXCAVATION) AT 8-1-1 OR DIGGER AT 312-744-700 FOR FIELD LOCATIONS OF BURIED ELECTRIC, TELEPHONE, AND GAS UTILITIES. 48 HOUR NOTIFICATION IS REQUIRED.
- THE RESIDENT ENGINEER SHALL CONTACT THE DEPARTMENT'S ELECTRICAL MAINTENANCE CONTRACTOR, MEADE ELECTRIC COMPANY AT 773-287-7672 PRIOR TO THE START OF CONSTRUCTION TO LOCATE ALL IDOT ELECTRICAL EQUIPMENT AND UNDERGROUND CABLES.
- REMOVAL OF DAMAGED MATERIALS WILL INCLUDE DISMANTLING, LOADING, HAULING AND DISPOSAL. THE WORK SITE WILL BE LEFT IN A SAFE AND ORDERLY CONDITION.
- NO MATERIAL SHOULD BE LEFT ON OR NEAR THE ROADWAY DURING NON-WORKING HOURS.
- ANY LOOSE MATERIAL DEPOSITED IN THE FLOW LINE OF DRAINAGE STRUCTURES, WHICH OBSTRUCTS THE NATURAL FLOW OF WATER SHALL BE REMOVED AT THE CLOSE OF EACH WORKING DAY. PRIOR TO ACCEPTANCE OF THE IMPROVEMENT, ALL DRAINAGE STRUCTURES SHALL BE FREE OF DIRT AND DEBRIS. THIS WORK WILL NOT BE PAID FOR SEPARATELY, BUT SHALL BE CONSIDERED AS INCLUDED IN THE UNIT BID PRICES OF THE CONTRACT.
- ANY EARTHWORK REQUIRED FOR THE INSTALLATION OF GUARDRAIL OR TRAFFIC BARRIER TERMINALS SHALL BE IN ACCORDANCE WITH THE STANDARDS AND DETAILS IN THE PLANS AND WILL NOT BE PAID FOR SEPARATELY BUT WILL BE INCLUDED IN THE COST OF THE ITEM BEING INSTALLED.
- THE CONTRACTOR SHALL COORDINATE CONSTRUCTION ACTIVITIES WITH UTILITY COMPANIES AND THE CITY OF CHICAGO.
- THE CONTRACTOR WILL NOT BE ALLOWED TO SET UP A YARD OR FIELD OFFICE ON STATE PROPERTY WITHOUT WRITTEN PERMISSION FROM THE DEPARTMENT.
- ALL DAMAGE TO EXISTING PAVEMENT MARKINGS SHALL BE REPLACED AT NO ADDITIONAL COST TO THE DEPARTMENT.
- IT SHALL BE THE CONTRACTOR'S RESPONSIBILITY TO VERIFY ALL DIMENSIONS AND CONDITIONS EXISTING IN THE FIELD PRIOR TO CONSTRUCTION AND ORDERING OF MATERIALS.
- THE RESIDENT ENGINEER SHALL CONTACT THE EXPRESSWAY FIELD ENGINEER AT 847-705-4153 A MINIMUM OF TWO (2) WEEKS PRIOR TO THE PLACEMENT OF PERMANENT PAVEMENT MARKINGS.
- THE CONTRACTOR SHALL CONTACT THE DISTRICT ONE TRAFFIC CONTROL SUPERVISOR AT 847-705-4155 A MINIMUM OF 72 HOURS IN ADVANCE OF BEGINNING WORK.
- DO NOT SCALE PLANS FOR CONSTRUCTION DIMENSIONS.
- THE CONTRACTOR SHALL EXERCISE THE UTMOST PRECAUTIONS WHEN USING ARTIFICIAL LIGHTING DURING NIGHT OPERATIONS TO PREVENT ADVERSE VISIBILITY TO THE MOTORING PUBLIC AND ADJOINING RESIDENTIAL AREAS.
- TRAFFIC CONDITIONS, ACCIDENTS AND OTHER UNFORSEEN EMERGENCY CONDITIONS MAY REQUIRE THE ENGINEER TO RESTRICT, MODIFY OR REMOVE LANE CLOSURES OR CHANNELIZATION SHOWN IN THE PLANS. THE CONTRACTOR SHALL RESPOND TO THE ENGINEER'S REQUEST WITHIN THIRTY (30) MINUTES FROM THE TIME OF THE NOTIFICATION.
- THE CONTRACTOR MAY WORK IN THE EASTBOUND AND WESTBOUND LANES SIMULTANEOUSLY.
- THE CONTRACTOR SHALL SWEEP THE PAVEMENT SURFACE AND REMOVE TRAFFIC CONTROL AT THE END OF EACH NIGHT SHIFT PER ARTICLE 107.15 OF THE STANDARD SPECIFICATIONS. VERTICAL BARRICADES WILL REMAIN IN PLACE ALONG THE EDGES OF PAVEMENT.
- THE ALIGNMENTS AND SUPPORTING DATA SHOWN IN THE PLANS WAS DEVELOPED FROM PREVIOUS PLANIMETRICS AND AERIAL PHOTOGRAPHY FURNISHED BY THE DEPARTMENT AND IS NOT THE RESULT OF A GROUND SURVEY. THEREFORE, THE ALIGNMENTS AND SUPPORTING DATA SHOWN IN THE PLANS IS FOR REFERENCE PURPOSES ONLY. THE RELATIVE ACCURACY OF THE INFORMATION IS UNKNOWN AND CANNOT BE GUARANTEED. THE CONTRACTOR MAY BE REQUIRED TO ADJUST LAYOUT TO MATCH ACTUAL FIELD CONDITIONS AND THE INTENT OF THE PLANS.

PLAN	DATE
SURVEYED	BY
PLOTTED	
FILED	
DATE	
BY	
NO. OF DAYS CHECKED	
DATE	
BY	
NO. OF DAYS CHECKED	
DATE	
BY	

PROFILE	DATE
SURVEYED	BY
PLOTTED	
FILED	
DATE	
BY	
NO. OF DAYS CHECKED	
DATE	
BY	
NO. OF DAYS CHECKED	
DATE	
BY	

HOT-MIX ASPHALT MIXTURE REQUIREMENTS		
MIXTURE TYPE	AIR VOIDS @ Nd@s	QUALITY MANAGEMENT PROGRAM (QMP)
SHOULDERS		
HMA SHOULDER (HMA BINDER IL-19mm); 6"	4.0% @ 70 GYR.	QC/QA
QMP DESIGNATION: QUALITY CONTROL/QUALITY ASSURANCE (QC/QA)		

THE UNIT WEIGHT USED TO CALCULATE ALL HMA SURFACE MIXTURE QUANTITIES IS 112 LBS/ SQ YD/IN.

THE AC TYPE FOR POLYMERIZED HMA MIXTURES SHALL BE "SBS/SBR PG 76 -22". FOR NON-POLYMERIZED HMA THE "AC TYPE" SHALL BE "PG 64 -22" UNLESS MODIFIED BY DISTRICT ONE SPECIAL PROVISIONS.

FOR USE OF RECYCLED MATERIALS SEE SPECIAL PROVISIONS.

QUALITY MANAGEMENT PROGRAM (QMP) IDENTIFIES THE PARTICULAR QUALITY CONTROL SPECIFICATION THAT APPLIES TO THE HMA MIXTURE.

HRG PROJECT NO.: 6650046.6  
 HRG CONTRACT FILE NAME: D62859-ehf-cen2000  
 PLOT DRIVER: il\_sdr\_jw\_drc17g  
 PEN TABLE: plot\_habel.tbl



HRGreen.com  
 Illinois Professional Design Firm  
 #194-001522

USER NAME = bheruna	DESIGNED - BH	REVISED -
	DRAWN - DMS	REVISED -
PLOT SCALE = NTS	CHECKED - TH	REVISED -
PLOT DATE = 5/17/2017	DATE - 5/17/17	REVISED -

**STATE OF ILLINOIS  
 DEPARTMENT OF TRANSPORTATION**

**INDEX OF SHEETS, LIST OF STATE STANDARDS  
 AND GENERAL NOTES**

SCALE: NTS SHEET NO. 1 OF 1 SHEETS STA. TO STA.

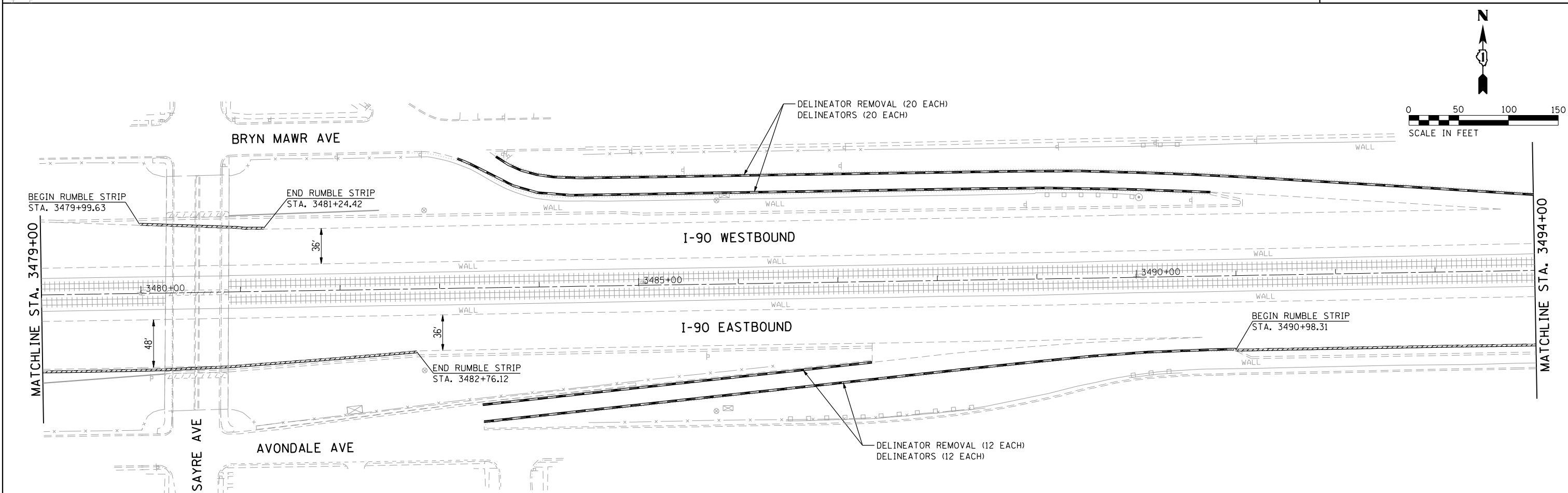
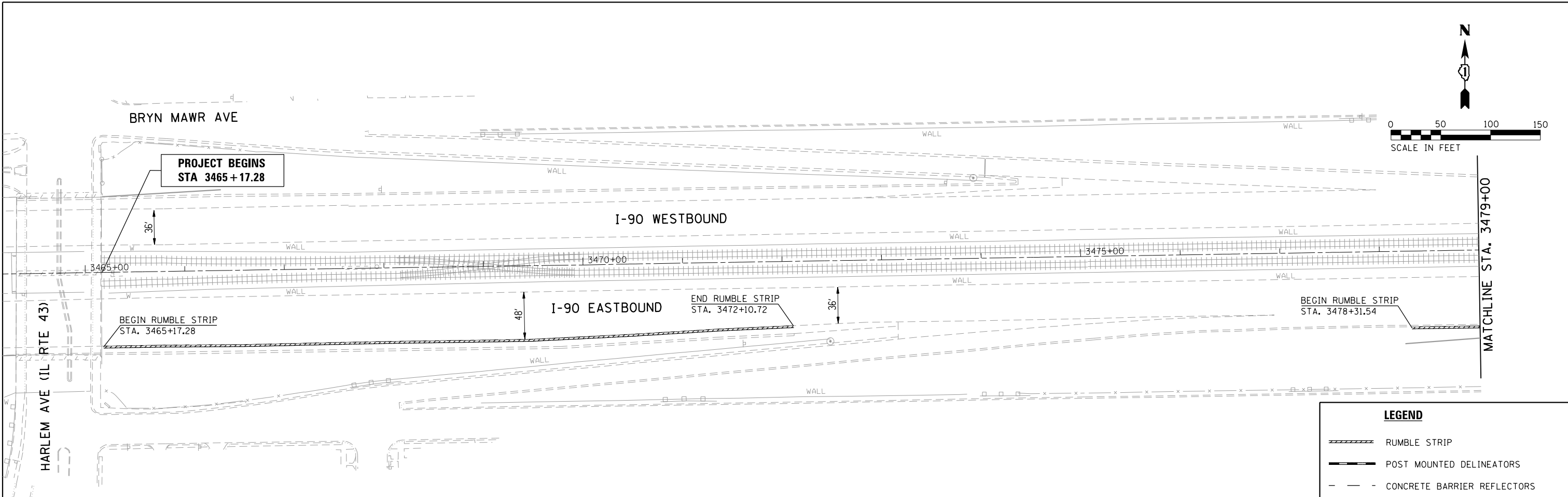
F.A.I. RTE.	SECTION NO.	COUNTY	TOTAL SHEETS	SHEET NO.
90	2015-0741	COOK	14	2
CONTRACT NO. 62B58				
FED. ROAD DIST. NO. [ILLINOIS] FED. AID PROJECT				



PLAN	SURVEYED	DATE
	PLOTTED	
	ALIGNED	
	CHECKED	
	FILE NAME	
	NO.	

PROFILE	SURVEYED	DATE
	PLOTTED	
	GRADES CHECKED	
	STRUCTURE	
	NOT AT THIS OFFICE	
	NO.	

HRG PROJECT NO.: 8660046.5  
 HRG PROJ. CONTACT: DGS2856-sh7-plm04.dgn  
 FILE NUMBER: 10/10/17  
 PEN TABLE: pcc100tbl.tbl



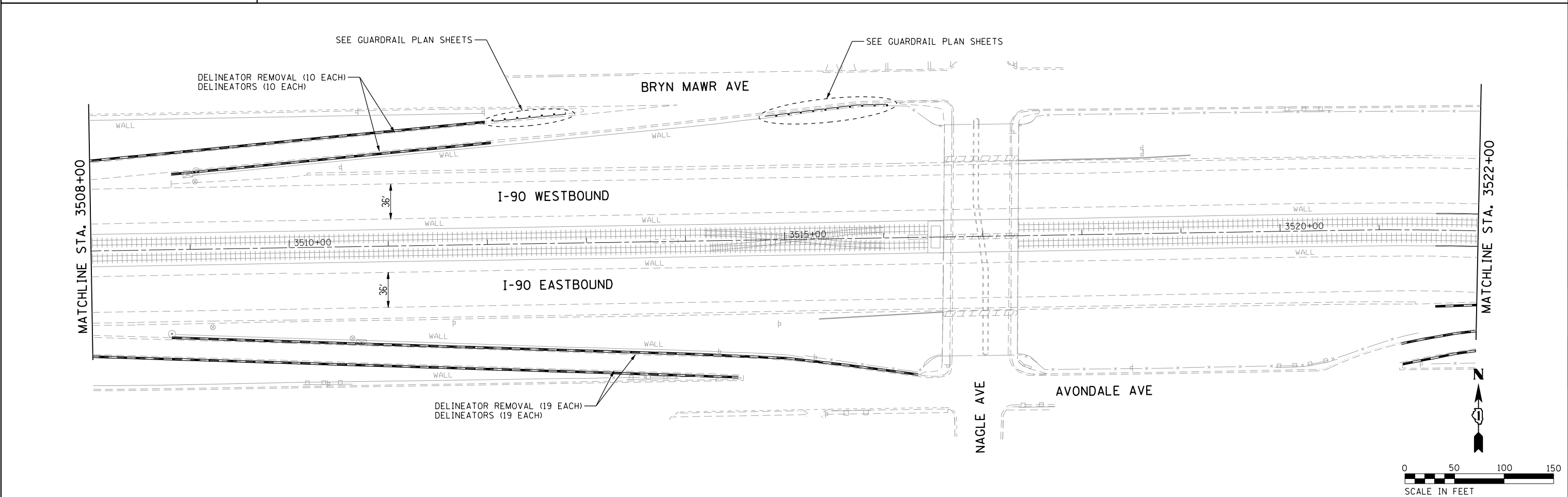
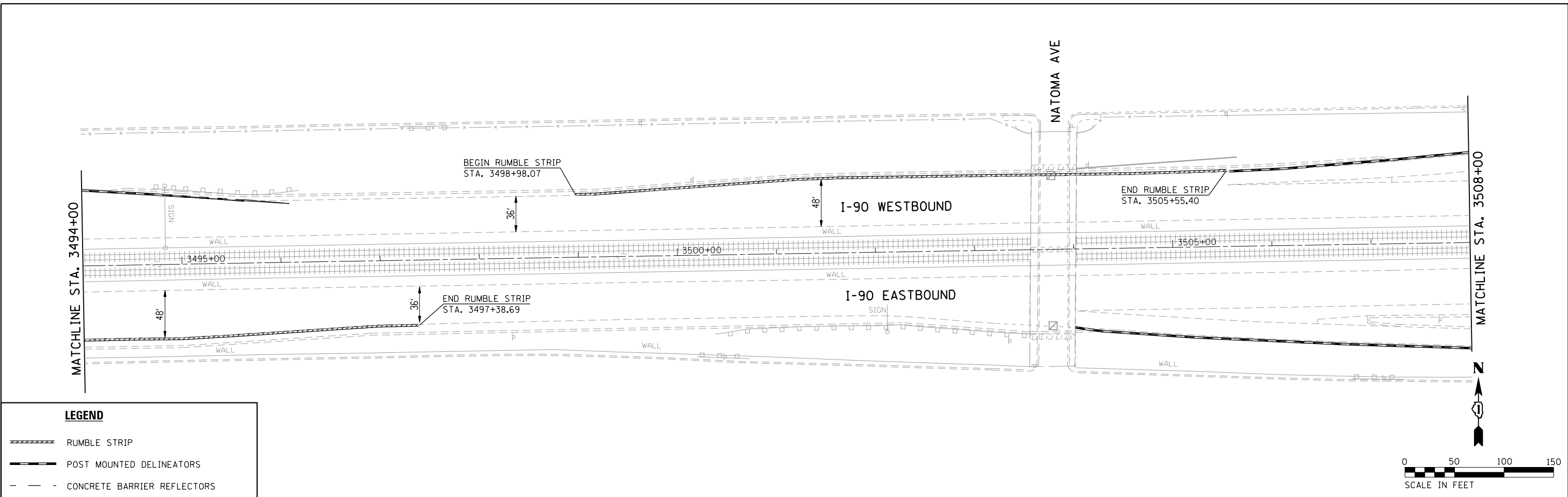
	HRGreen.com Illinois Professional Design Firm #184-001322	USER NAME = bhar20 DESIGNED - BH DRAWN - DMS CHECKED - TH DATE - 5/17/17	REVISED - REVISED - REVISED - REVISED -	<b>STATE OF ILLINOIS          DEPARTMENT OF TRANSPORTATION</b>	<b>ROADWAY PLAN          I90 (KENNEDY EXPRESSWAY)</b>	F.A.I. RE. 90	SECTION NO. 2015-074I	COUNTY COOK	TOTAL SHEETS 14	SHEET NO. 4
	SCALE: 1"=50' SHEET NO. 1 OF 7 SHEETS STA. 3465+17 TO STA. 3494+00						CONTRACT NO. 62B58			

F.A.I. RE. 90	SECTION NO. 2015-074I	COUNTY COOK	TOTAL SHEETS 14	SHEET NO. 4
FED. ROAD DIST. NO. ILLINOIS FED. AID PROJECT				

PLAN	SURVEYED	BY	DATE
	PLOTTED		
	ALIGNED		
	CHECKED		
	FILED		
	CARD FILE NAME		
	NO.		

PROFILE	SURVEYED	BY	DATE
	PLOTTED		
	GRADES CHECKED		
	STRUCTURE NOTATIONS CHECKED		
	NO.		

HRG PROJECT NO.: 8660046.5  
 HRG PROJ. CONTACT: D62856-sh7-plm02.dgn  
 FILE NUMBER: 6/17/2017  
 PEN TABLE: p01tbl01.tbl



**HRGreen**  
 HRGreen.com  
 Illinois Professional Design Firm  
 #184-001322

USER NAME = bhartha	DESIGNED - BH	REVISED -
	DRAWN - DMS	REVISED -
PLOT SCALE = 1"=50'	CHECKED - TH	REVISED -
PLOT DATE = 5/17/2017	DATE - 5/17/17	REVISED -

**STATE OF ILLINOIS  
 DEPARTMENT OF TRANSPORTATION**

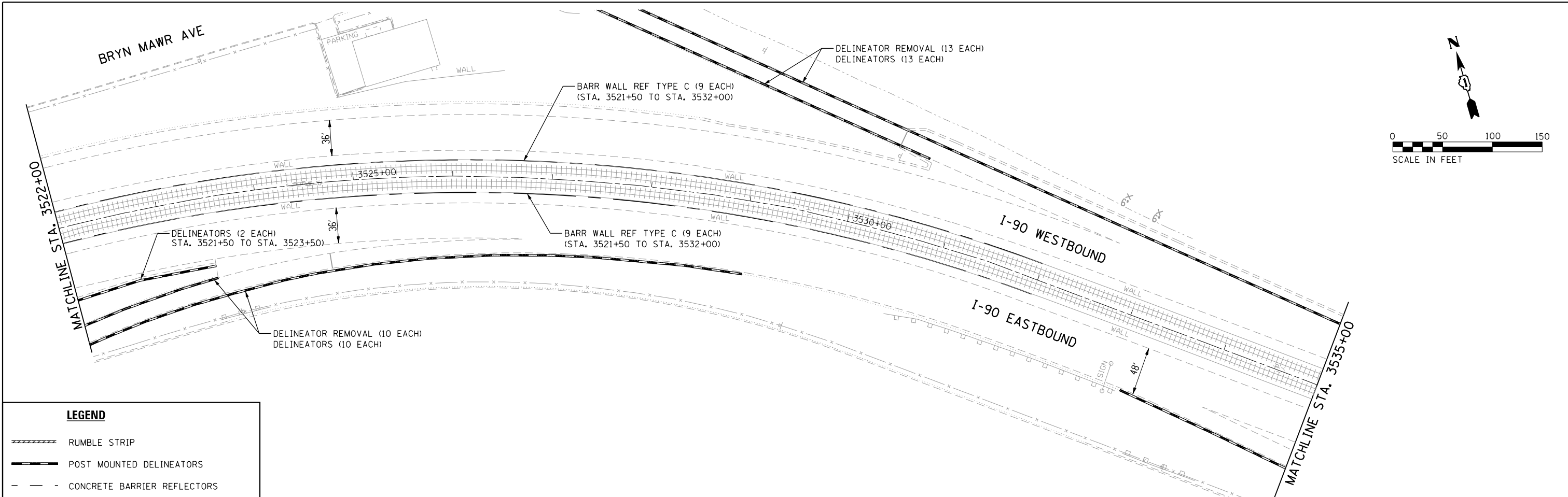
**ROADWAY PLAN**  
**190 (KENNEDY EXPRESSWAY)**  
 SCALE: 1"=50' SHEET NO. 2 OF 7 SHEETS STA. 3494+00 TO STA. 3522+00

F.A.I. RTE. 90	SECTION NO. 2015-0741	COUNTY COOK	TOTAL SHEETS 14	SHEET NO. 5
FED. ROAD DIST. NO. ILLINOIS FED. AID PROJECT			CONTRACT NO. 62B58	

PLAN	SURVEYED	BY	DATE
	PLOTTED		
	GRADES CHECKED		
	ALIGNMENT CHECKED		
	STRUCTURE NOTATIONS CHECKED		
	NOTE BOOK NO.		
	FILE NAME		
	PEN TABLE		

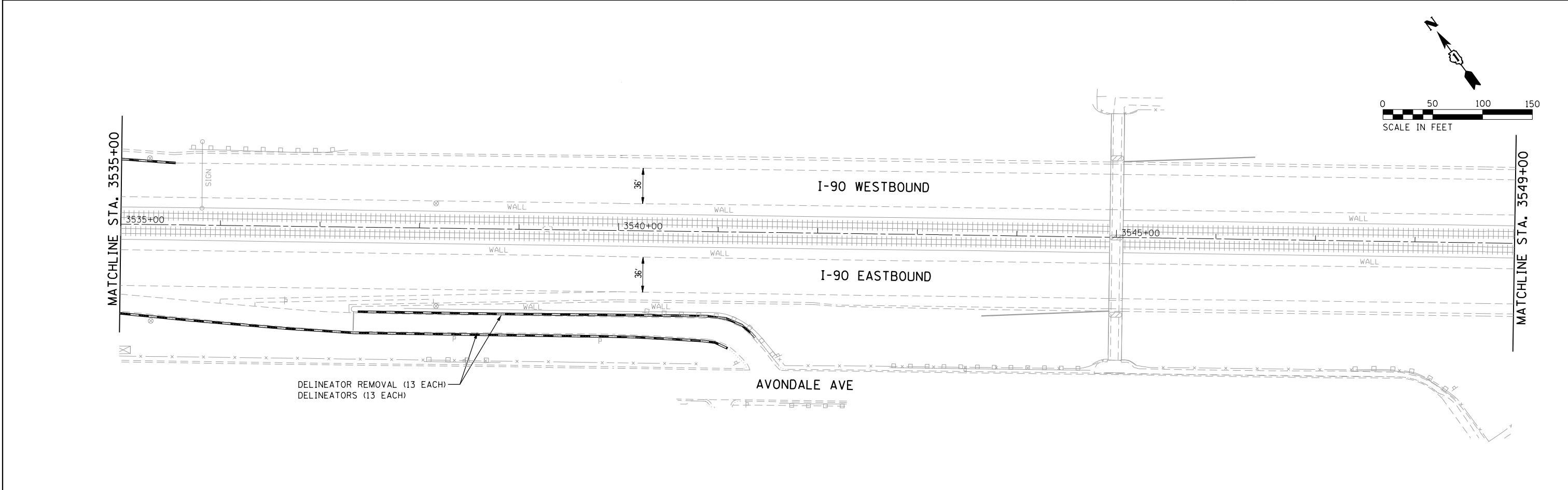
PROFILE	SURVEYED	BY	DATE
	PLOTTED		
	GRADES CHECKED		
	ALIGNMENT CHECKED		
	STRUCTURE NOTATIONS CHECKED		
	NOTE BOOK NO.		
	FILE NAME		
	PEN TABLE		

HRG PROJECT NO.: 8660046.5  
 HRG PROJ. CONTACT: D62856-sh7-plm03.dgn  
 FILE NAME: 62856-sh7-plm03.dgn  
 PEN TABLE: 62856-sh7-plm03.tbl



**LEGEND**

	RUMBLE STRIP
	POST MOUNTED DELINEATORS
	CONCRETE BARRIER REFLECTORS



USER NAME = bhartm	DESIGNED - BH	REVISED -
	DRAWN - DMS	REVISED -
PLOT SCALE = 1"=50'	CHECKED - TH	REVISED -
PLOT DATE = 5/17/2017	DATE - 5/17/17	REVISED -

**STATE OF ILLINOIS  
DEPARTMENT OF TRANSPORTATION**

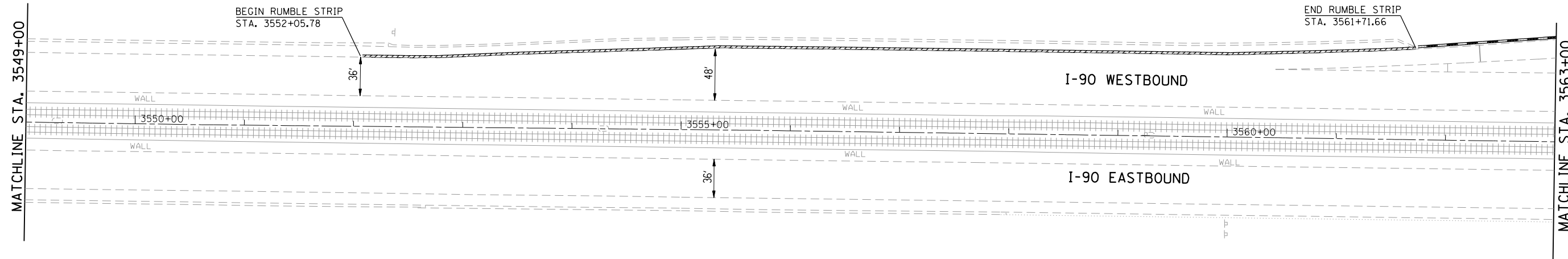
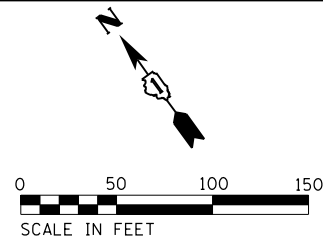
<b>ROADWAY PLAN</b>			
<b>190 (KENNEDY EXPRESSWAY)</b>			
SCALE: 1"=50'	SHEET NO. 3 OF 7 SHEETS	STA. 3522+00	TO STA. 3549+00

F.A.I. RTE. 90	SECTION NO. 2015-0741	COUNTY COOK	TOTAL SHEETS 14	SHEET NO. 6
FED. ROAD DIST. NO.				ILLINOIS FED. AID PROJECT
CONTRACT NO. 62B58				

PLAN	SURVEYED	DATE
	PLOTTED	
	ALIGNED	
	CHECKED	
	FILED	
	CADD FILE NAME	
	NO.	

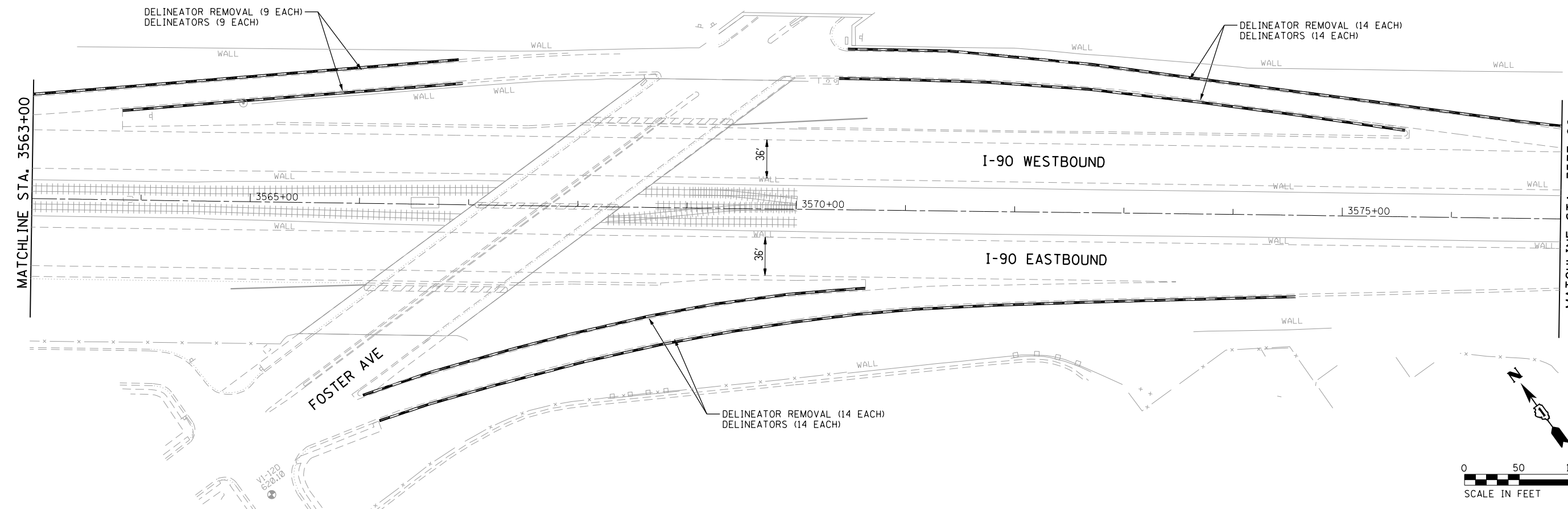
PROFILE	SURVEYED	DATE
	PLOTTED	
	GRADES CHECKED	
	STRUCTURE NOTATIONS CHECKED	
	NO.	

HRG PROJECT NO.: 8650046.5  
 HRG PROJ. CONTACT: DGS2856-sh7-plm04.dgn  
 FILE NUMBER: 20150741-01-01-01  
 PEN TABLE: p01tbl.tbl



**LEGEND**

- RUMBLE STRIP
- POST MOUNTED DELINEATORS
- CONCRETE BARRIER REFLECTORS



**HRGreen**  
 HRGreen.com  
 Illinois Professional Design Firm  
 #184-001322

USER NAME = bhartm	DESIGNED - BH	REVISED -
	DRAWN - DMS	REVISED -
PLOT SCALE = 1"=50'	CHECKED - TH	REVISED -
PLOT DATE = 5/17/2017	DATE - 5/17/17	REVISED -

**STATE OF ILLINOIS  
 DEPARTMENT OF TRANSPORTATION**

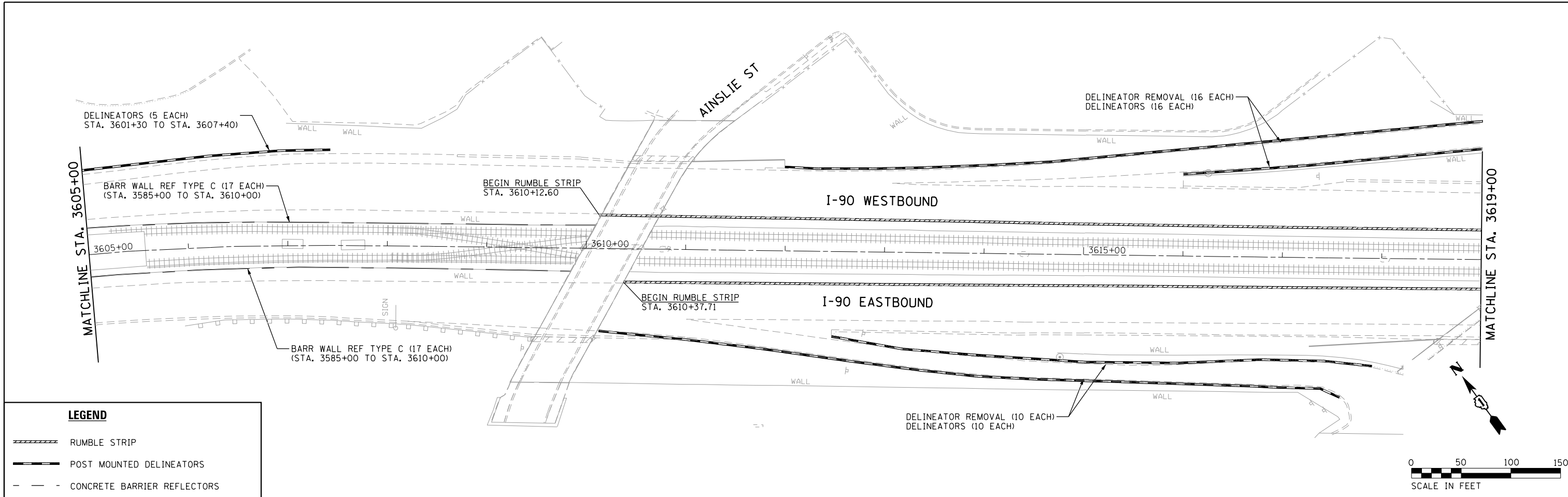
**ROADWAY PLAN**  
**190 (KENNEDY EXPRESSWAY)**  
 SCALE: 1"=50' SHEET NO. 4 OF 7 SHEETS STA. 3549+00 TO STA. 3577+00

F.A.I. RTE. 90	SECTION NO. 2015-0741	COUNTY COOK	TOTAL SHEETS 14	SHEET NO. 7
FED. ROAD DIST. NO. ILLINOIS FED. AID PROJECT			CONTRACT NO. 62B58	





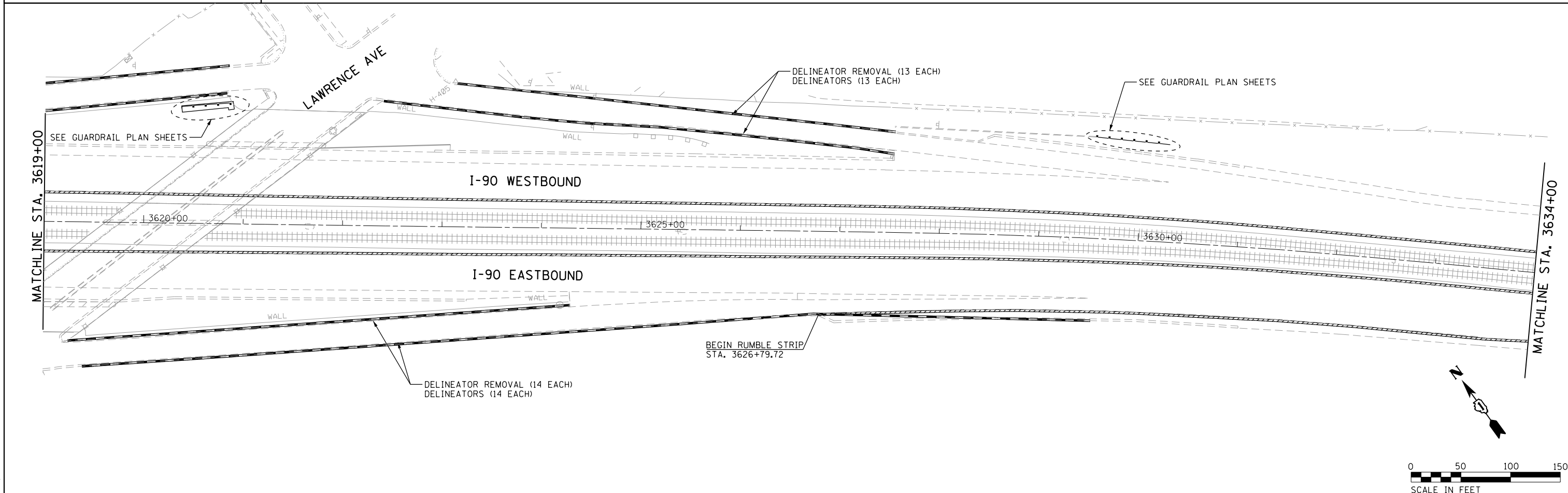
PLAN	SURVEYED	DATE
	PLOTTED	BY
	ALIGNED	
	CHECKED	
	FILED	
	NO. _____	
	FILE NAME	
	FILE NO.	



**LEGEND**

	RUMBLE STRIP
	POST MOUNTED DELINEATORS
	CONCRETE BARRIER REFLECTORS

PROFILE	SURVEYED	DATE
	PLOTTED	BY
	GRADES CHECKED	
	STRUCTURE NOTATIONS CHECKED	
	NO. _____	
	FILE NAME	
	FILE NO.	



HRG PROJECT NO.: 8660046.5  
 HRG PROJ. CONTACT: 062856-sh7-plm06.dgn  
 FILE NAME: 062856-sh7-plm06.dgn  
 PEN TABLE: p01tbl.tbl

**HRGreen**  
 HRGreen.com  
 Micro Professional Design Firm  
 #184-001322

USER NAME = bharto	DESIGNED - BH	REVISED -
	DRAWN - DMS	REVISED -
PLOT SCALE = 1"=50'	CHECKED - TH	REVISED -
PLOT DATE = 5/17/2017	DATE - 5/17/17	REVISED -

**STATE OF ILLINOIS  
 DEPARTMENT OF TRANSPORTATION**

**ROADWAY PLAN  
 I90 (KENNEDY EXPRESSWAY)**

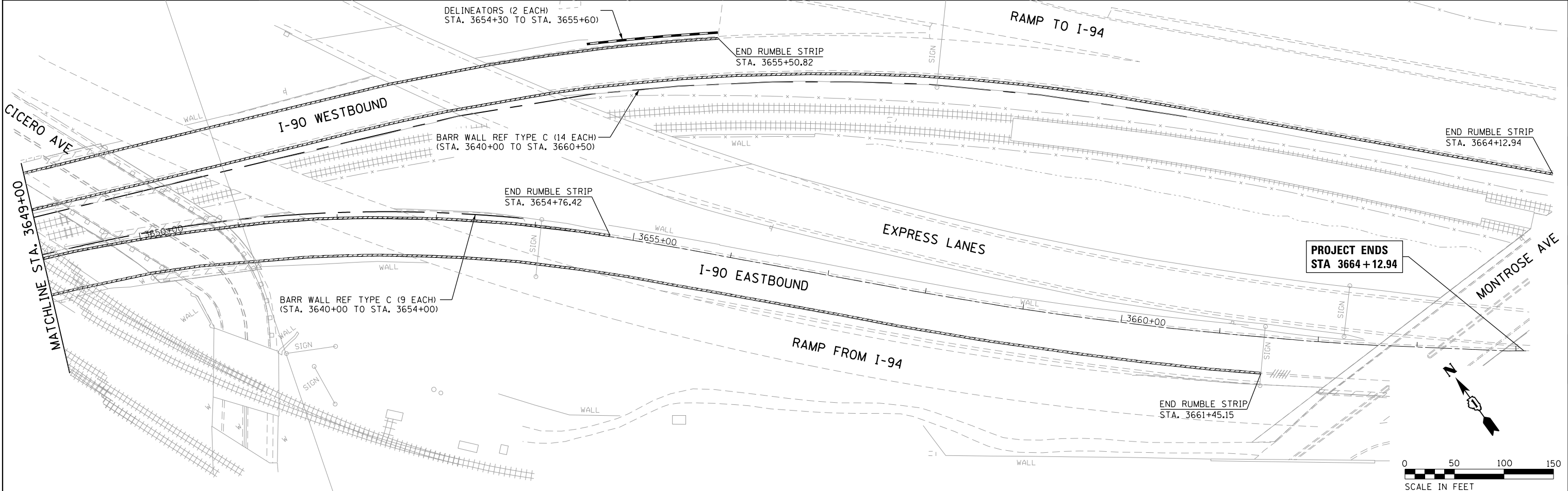
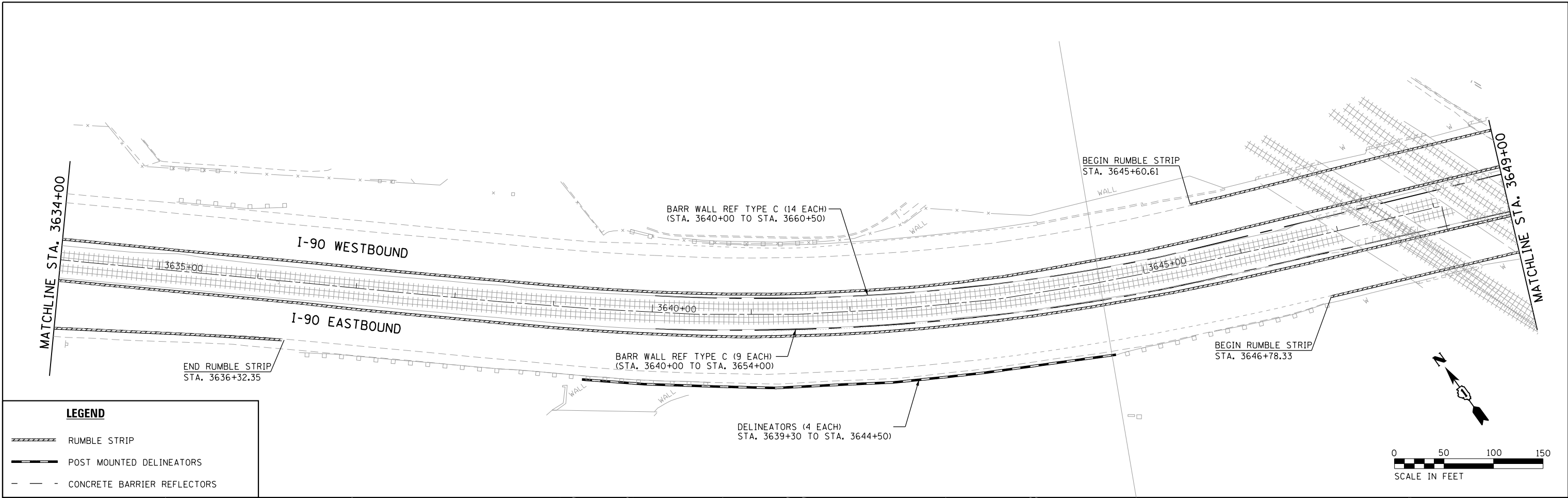
SCALE: 1"=50'    SHEET NO. 6 OF 7 SHEETS    STA. 3605+00 TO STA. 3634+00

F.A.I. RTE. 90	SECTION NO. 2015-074I	COUNTY COOK	TOTAL SHEETS 14	SHEET NO. 9
CONTRACT NO. 62B58				
FED. ROAD DIST. NO. ILLINOIS FED. AID PROJECT				

PLAN	SURVEYED	DATE
	PLOTTED	
	ALIGNED	
	CHECKED	
	DESIGNED	
	BY	
	FILE NAME	
	TABLE	

PROFILE	SURVEYED	DATE
	PLOTTED	
	GRADES CHECKED	
	STRUCTURE NOTATIONS CHECKED	
	BY	
	FILE NAME	
	TABLE	

HRG PROJECT NO.: 8650046.5  
 HRG PROJ. CONTACT: 062856-shr+plm@hr.com  
 FILE NAME: 190-0741-01-01.dgn  
 PEN TABLE: 190-0741-01-01.tbl



**HRGreen**  
 HRGreen.com  
 Illinois Professional Design Firm  
 #184-001322

USER NAME = bhartha	DESIGNED - BH	REVISED -
PLOT SCALE = 1"=50'	DRAWN - DMS	REVISED -
PLOT DATE = 5/17/2017	CHECKED - TH	REVISED -
	DATE - 5/17/17	REVISED -

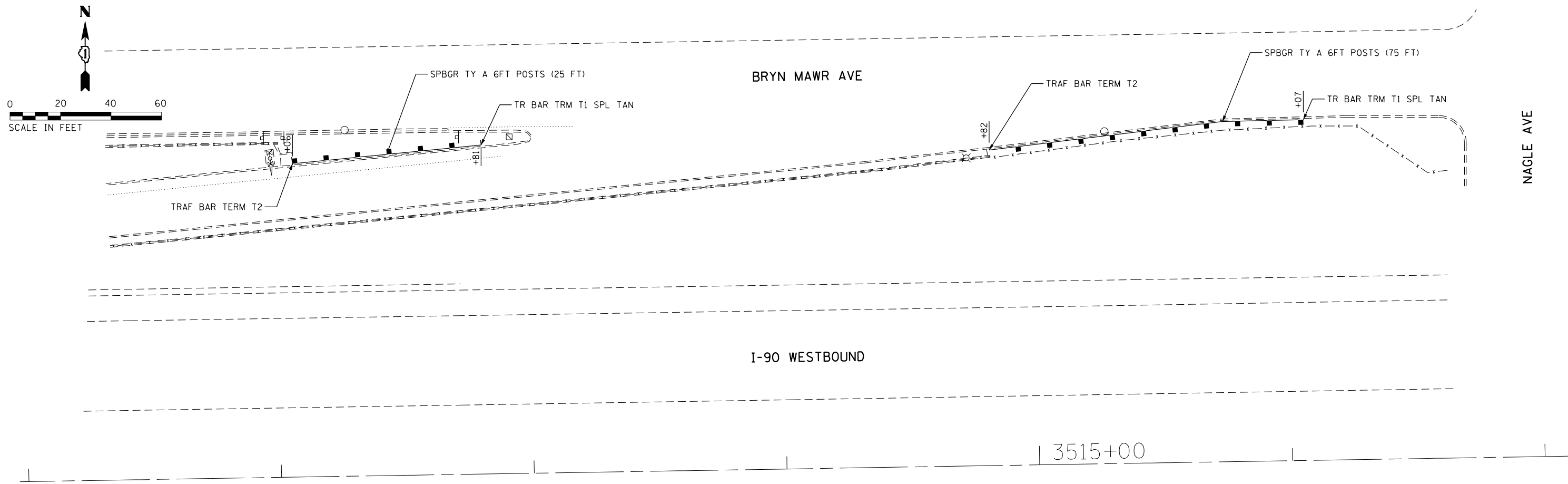
**STATE OF ILLINOIS  
 DEPARTMENT OF TRANSPORTATION**

**ROADWAY PLAN  
 190 (KENNEDY EXPRESSWAY)**

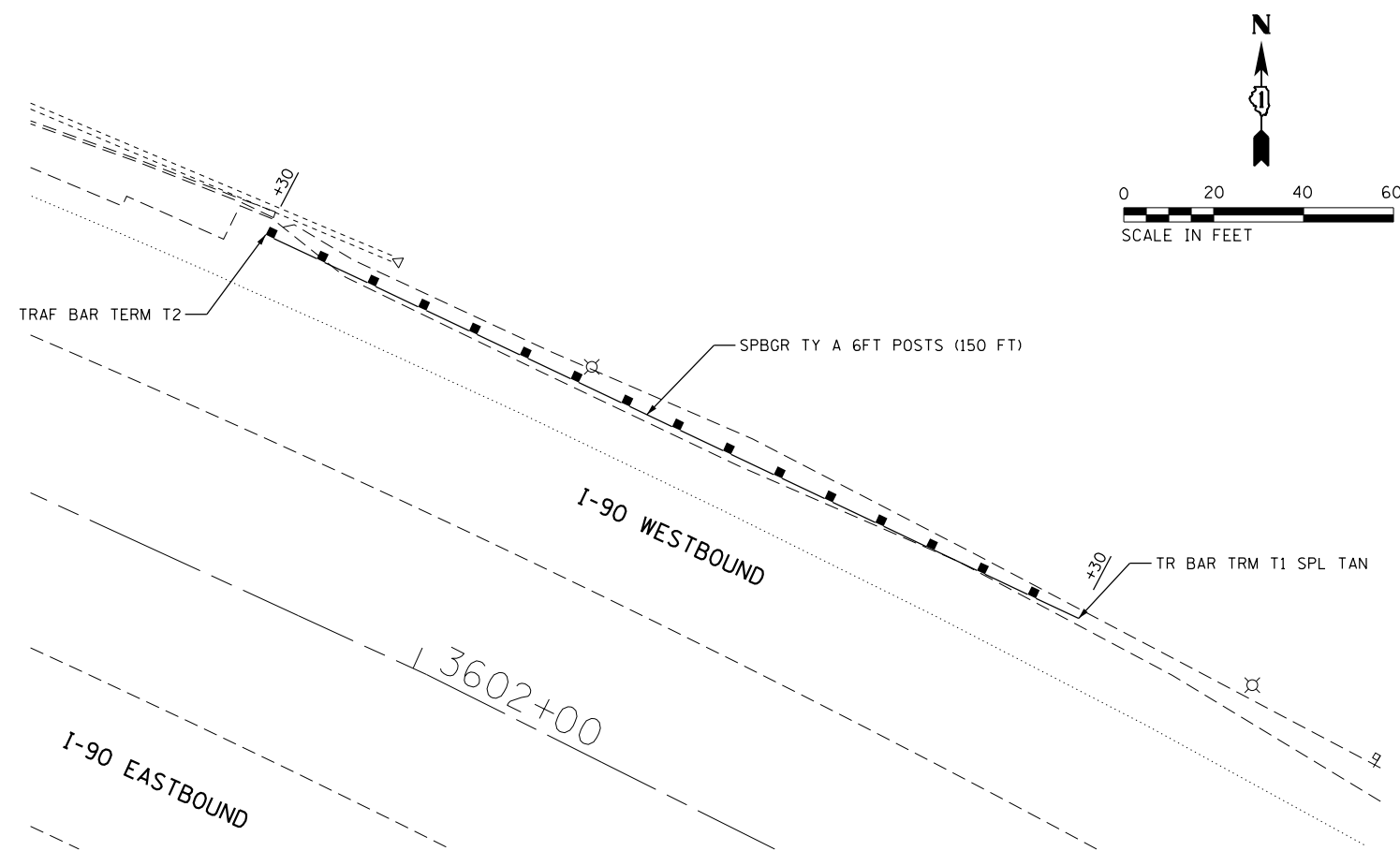
SCALE: 1"=50'    SHEET NO. 7 OF 7 SHEETS    STA. 3634+00 TO STA. 3664+12

F.A.I. RTE. 90	SECTION NO. 2015-0741	COUNTY COOK	TOTAL SHEETS 14	SHEET NO. 10
CONTRACT NO. 62B58				
FED. ROAD DIST. NO. ILLINOIS FED. AID PROJECT				

PLAN	SURVEYED	DATE
NOTE BOOK	PLOTTED	BY
NO.	ALIGNED	
	CHECKED	
	FILE NAME	
	CADD FILE NAME	



PROFILE	SURVEYED	DATE
NOTE BOOK	PLOTTED	BY
NO.	GRADES CHECKED	
	STRUCTURE	NOT AT THIS CHKD



HRG PROJECT NO.: 8660046.5  
 HRG PROJ. CONTACT: D62856-shr-puac-cr-ali-plan01.dgn  
 FILE NAME: 62856-shr-puac-cr-ali-plan01.dgn  
 PEN TABLE: 62856-shr-puac-cr-ali-plan01.dgn



USER NAME = bhartma	DESIGNED - BH	REVISED -
PLOT SCALE = 1"=20'	DRAWN - DMS	REVISED -
PLOT DATE = 5/17/2017	CHECKED - TH	REVISED -
	DATE - 5/17/17	REVISED -

STATE OF ILLINOIS  
 DEPARTMENT OF TRANSPORTATION

GUARDRAIL IMPROVEMENT PLAN  
 I90 (KENNEDY EXPRESSWAY)

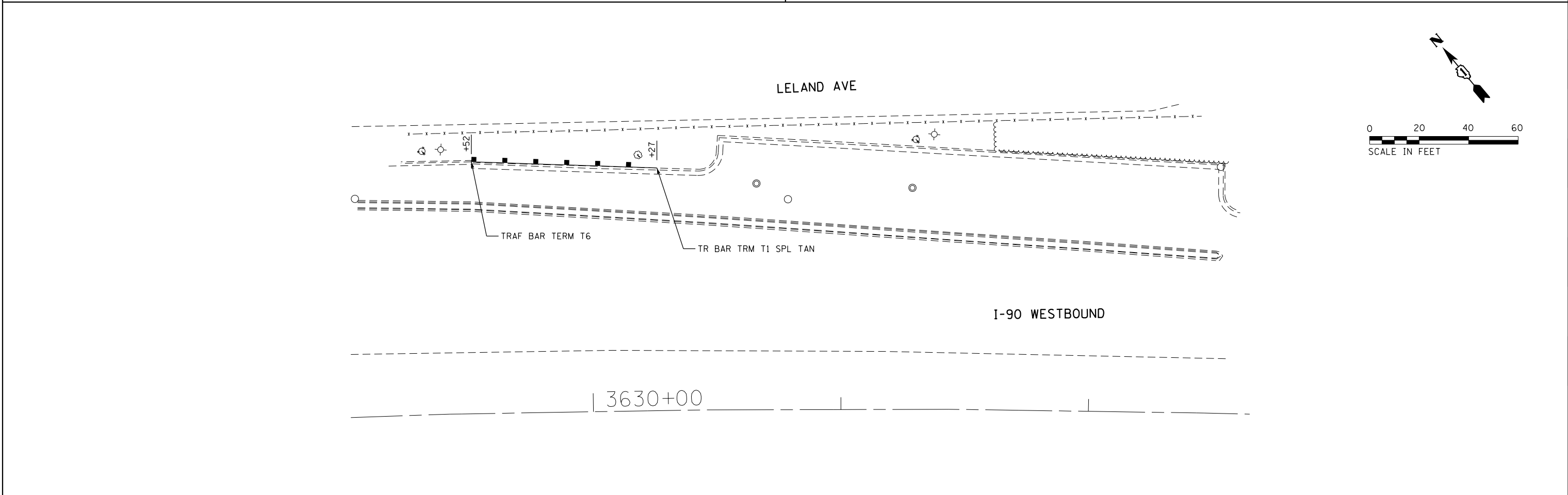
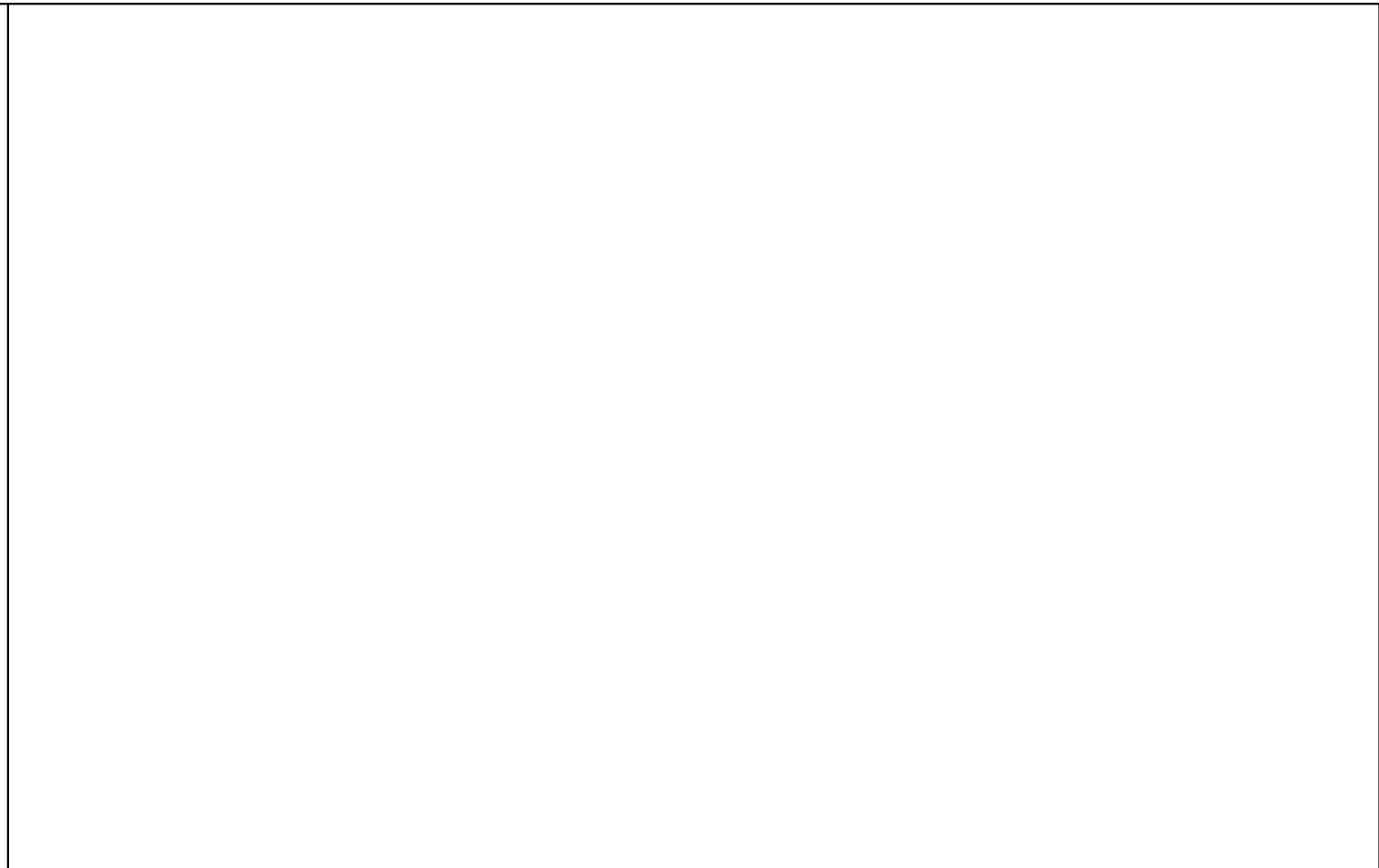
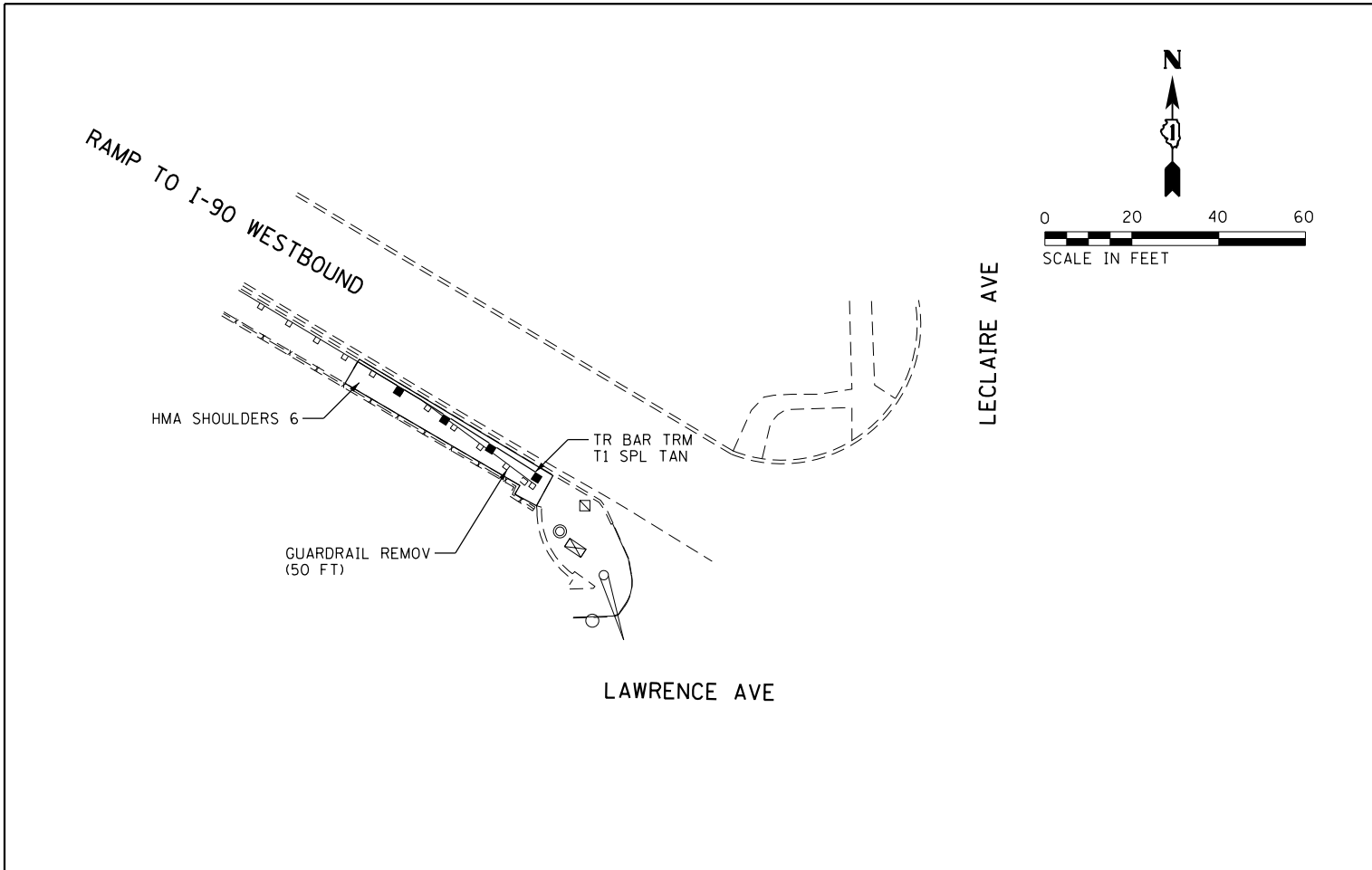
SCALE: 1"=20' SHEET NO. 1 OF 2 SHEETS STA. TO STA.

F.A.I. RTE.	SECTION NO.	COUNTY	TOTAL SHEETS	SHEET NO.
90	2015-074I	COOK	14	11
FED. ROAD DIST. NO.			ILLINOIS FED. AID PROJECT	
			CONTRACT NO. 62B58	

PLAN	SURVEYED	BY	DATE
	PLOTTED		
	ALIGNED		
	CHECKED		
	FILED		
	FILE NAME		
	NO.		

PROFILE	SURVEYED	BY	DATE
	PLOTTED		
	GRADES CHECKED		
	STRUCTURE		
	NOT AT THIS OFFICE		
	NO.		

HRG PROJECT NO.: 8660046.5  
 HRG PROJ. CONTACT: DGS2856-shr-puor-cr-ali-plan02.dgn  
 FILE NUMBER: 6/17/2017  
 PEN TABLE: p01tbl.tbl



**HRGreen**  
 HRGreen.com  
 Illinois Professional Design Firm  
 #184-001322

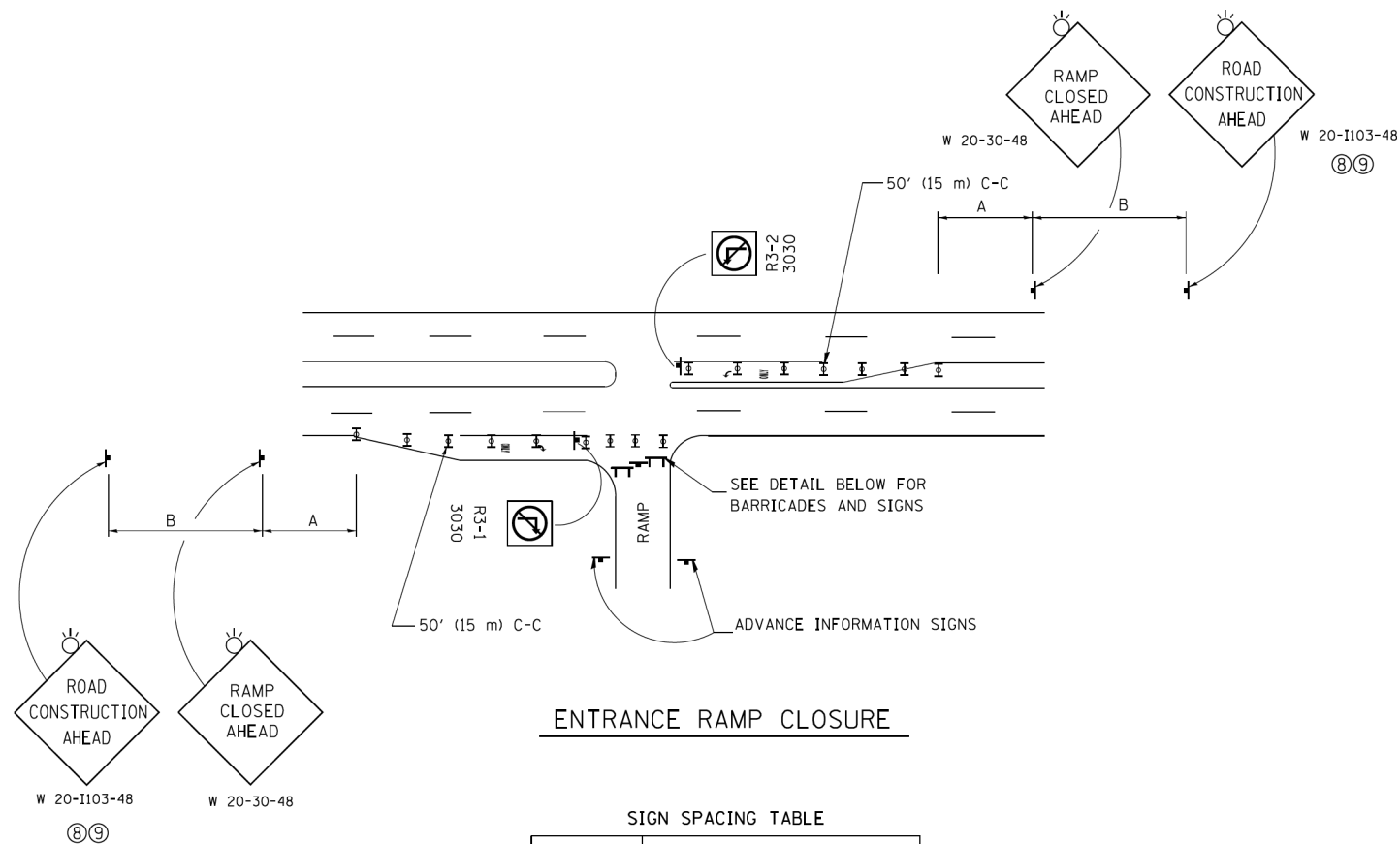
USER NAME = bhartma	DESIGNED - BH	REVISED -
	DRAWN - DMS	REVISED -
PLOT SCALE = 1"=20'	CHECKED - TH	REVISED -
PLOT DATE = 5/17/2017	DATE - 5/17/17	REVISED -

**STATE OF ILLINOIS  
 DEPARTMENT OF TRANSPORTATION**

**GUARDRAIL IMPROVEMENT PLAN  
 I90 (KENNEDY EXPRESSWAY)**

SCALE: 1"=20'    SHEET NO. 2 OF 2 SHEETS    STA.    TO STA.

F.A.I. RTE.	SECTION NO.	COUNTY	TOTAL SHEETS	SHEET NO.
90	2015-074I	COOK	14	12
CONTRACT NO. 62B58				
FED. ROAD DIST. NO.    ILLINOIS FED. AID PROJECT				

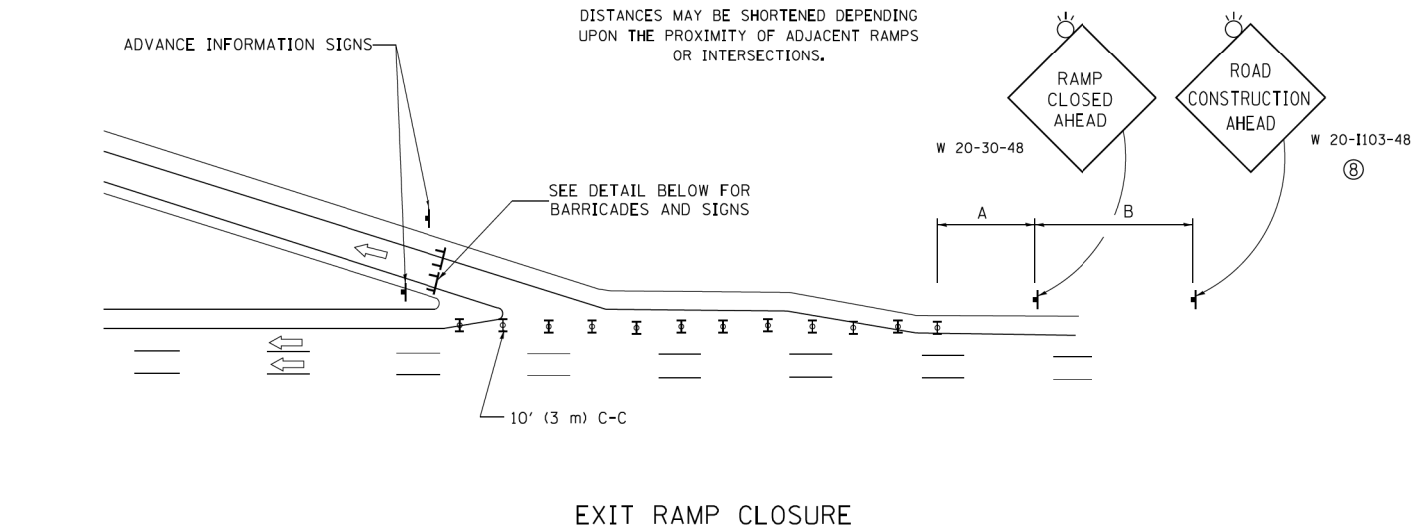


ENTRANCE RAMP CLOSURE

SIGN SPACING TABLE

FACILITY	DISTANCE BETWEEN SIGNS	
	A	B
EXPRESSWAY >24 HOURS	1000' (300 m)	1500' (450 m)
EXPRESSWAY ≤24 HOURS	500' (150 m)	500' (150 m)
ARTERIAL 55 MPH	500' (150 m)	500' (150 m)
ARTERIAL 50-45 MPH	350' (100 m)	350' (100 m)
ARTERIAL <45 MPH	200' (60 m)	200' (60 m)

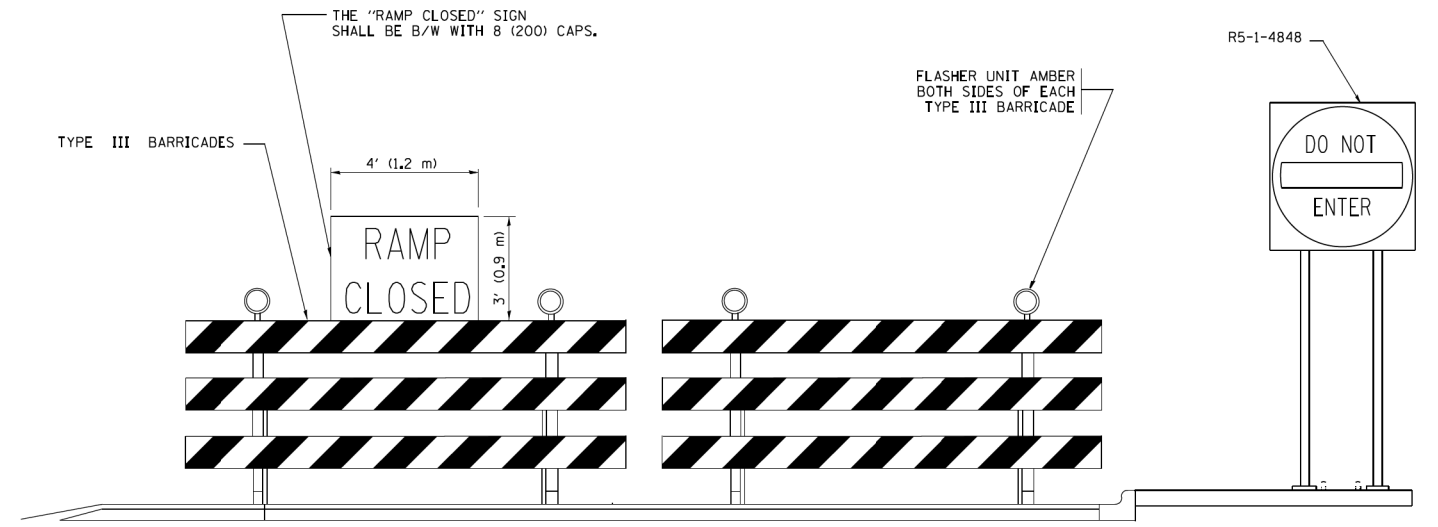
DISTANCES MAY BE SHORTENED DEPENDING UPON THE PROXIMITY OF ADJACENT RAMPS OR INTERSECTIONS.



EXIT RAMP CLOSURE

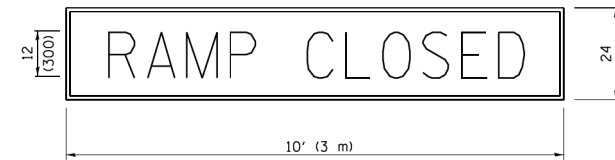
SYMBOLS

- ▬ TYPE II BARRICADE OR DRUM WITH STEADY BURN MONO-DIRECTIONAL LIGHT
- ⊓ TYPE III BARRICADE WITH 2 FLASHING LIGHTS



DETAIL FOR REQUIRED BARRICADES & SIGNS

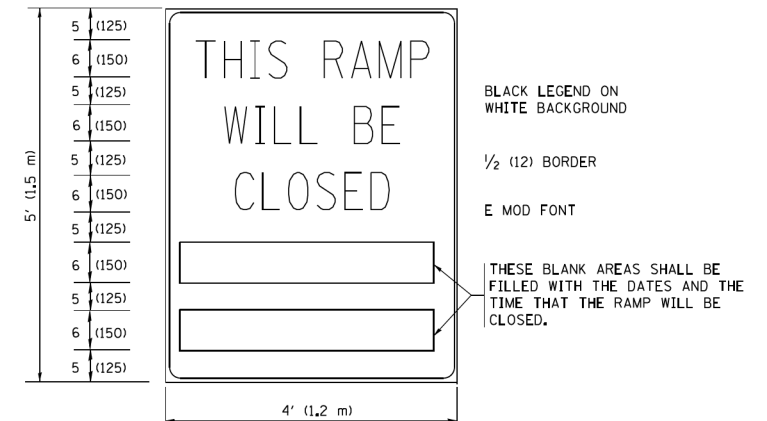
RAMP CLOSURE ADVANCE WARNING SIGN



BLACK LEGEND ON ORANGE BACKGROUND MOUNTED DIAGONALLY  
E MOD FONT  
1 (25) BORDER

THESE SIGNS ARE REQUIRED ON ALL THE EXIT GUIDE SIGNS FOR EXIT RAMPS THAT WILL BE CLOSED FOR MORE THAN FOUR (4) CONSECUTIVE DAYS.

RAMP CLOSURE ADVANCE INFORMATION SIGN



THESE SIGNS ARE REQUIRED ON BOTH SIDES OF THE RAMP, MINIMUM OF 1 WEEK IN ADVANCE OF THE CLOSURE.

THESE SIGNS SHALL BE FABRICATED AND PAID FOR ACCORDING TO THE TEMPORARY INFORMATION SIGNING SPECIAL PROVISION

GENERAL NOTES:

- ① CONES MAY BE SUBSTITUTED FOR DRUMS OR TYPE II BARRICADES DURING DAY OPERATIONS. CONES SHALL BE A MINIMUM OF 28 (700) HIGH.
- ② STEADY BURN LIGHTS WILL NOT BE REQUIRED FOR DAY OPERATIONS.
- ③ A FLAGGER SHALL BE POSITIONED AT EACH CLOSED RAMP THAT IS OPEN TO CONSTRUCTION VEHICLES, PRECEDED BY A W20-7 FLAGGER WARNING SIGN.
- ④ ALL ROUTE MARKERS AND TRAILBLAZER ASSEMBLIES WHICH DIRECT MOTORISTS TO A CLOSED ENTRANCE RAMP SHALL BE COVERED WHEN THE RAMP IS CLOSED FOR MORE THAN FOUR (4) DAYS.
- ⑤ THE SIGNING AND BARRICADING WHICH IS REQUIRED BY THIS DETAIL SHALL BE INCLUDED IN THE COST OF TRAFFIC CONTROL AND PROTECTION (EXPRESSWAYS).
- ⑥ AUTHORIZATION FROM THE DISTRICT'S BUREAU OF TRAFFIC IS REQUIRED FOR ALL RAMP CLOSURES.
- ⑦ THE RAMP CLOSURE ADVANCE INFORMATION SIGNS SHALL BE ERECTED IF THE CLOSURE TIME EXCEEDS TWENTY-FOUR (24) HOURS. ADDITIONAL ADVANCE WARNING SIGNS ON EXIT GUIDE SIGNING WILL BE REQUIRED FOR EXIT RAMP CLOSURES THAT EXCEED FOUR (4) DAYS IN LENGTH.
- ⑧ ROAD CONSTRUCTION AHEAD SIGNS MAY BE OMITTED WHEN THIS DETAIL IS USED IN CONJUNCTION WITH OTHER TRAFFIC CONTROL THAT ALREADY INCLUDES A ROAD CONSTRUCTION AHEAD SIGN.
- ⑨ ARTERIAL ROAD CONSTRUCTION AHEAD SIGNS SHALL BE INSTALLED ON THE LEFT SIDE OF TRAFFIC IF THE MEDIAN IS MORE THAN 10 FT WIDE.

ALL DIMENSIONS ARE IN INCHES (MILLIMETERS) UNLESS OTHERWISE SHOWN.

COMPANY NAME: #COMPANY NAME#  
PROJECT CONTACT: #PROJECT CONTACT#  
DATE PLOTTED: 5/17/2017 1:46:22 PM  
FILE NAME: D:\62958\ent-det-TC08.dgn  
PLOT DRIVER: IL\pdf\dwgplotter  
PEN TABLE: plotlabel.tbl

FILE NAME =	USER NAME = footemj	DESIGNED - DWS	REVISED - JAF 02-06
ca:\pwork\pwork\footemj\d0108315\to08.dgn		DRAWN -	REVISED - SPB 01-07
	PLOT SCALE = 50.000' / in.	CHECKED -	REVISED - SPB 12-09
	PLOT DATE = 7/8/2013	DATE - 02-83	REVISED - MD 06-13

STATE OF ILLINOIS  
DEPARTMENT OF TRANSPORTATION

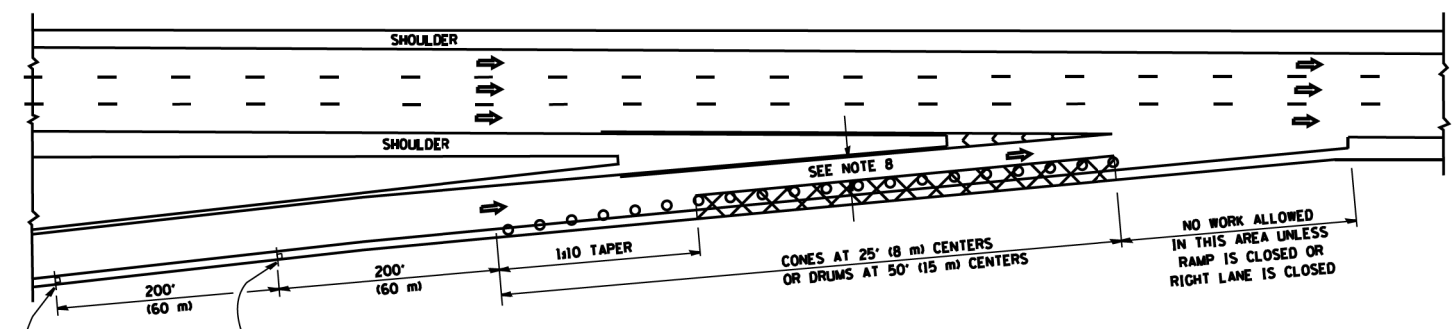
ENTRANCE AND EXIT RAMP  
CLOSURE DETAILS

SCALE: NONE SHEET NO. 1 OF 1 SHEETS STA. TO STA.

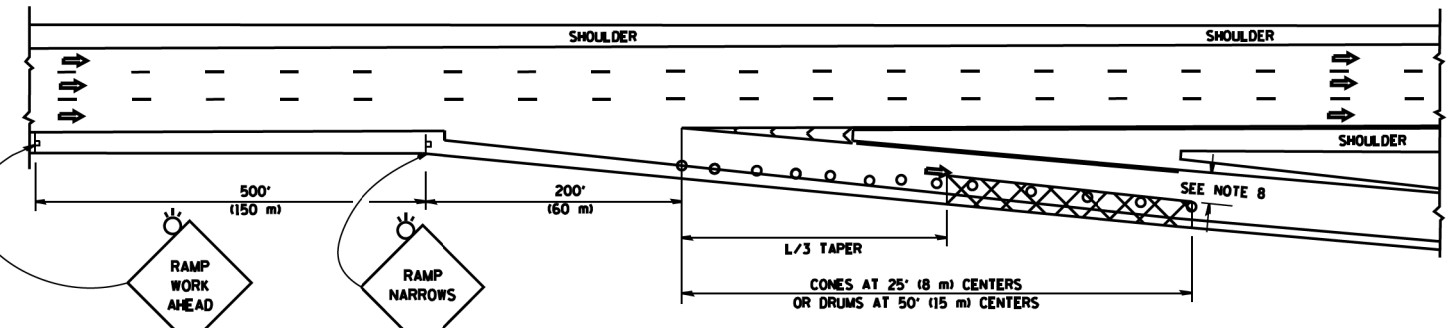
F.A.I. RTE.:	SECTION	COUNTY	TOTAL SHEETS	SHEET NO.
90	2015-0741	COOK	14	13
TC-08			CONTRACT NO. 62B58	
FED. ROAD DIST. NO. 1 ILLINOIS FED. AID PROJECT				

**PARTIAL RAMP CLOSURE DETAILS**

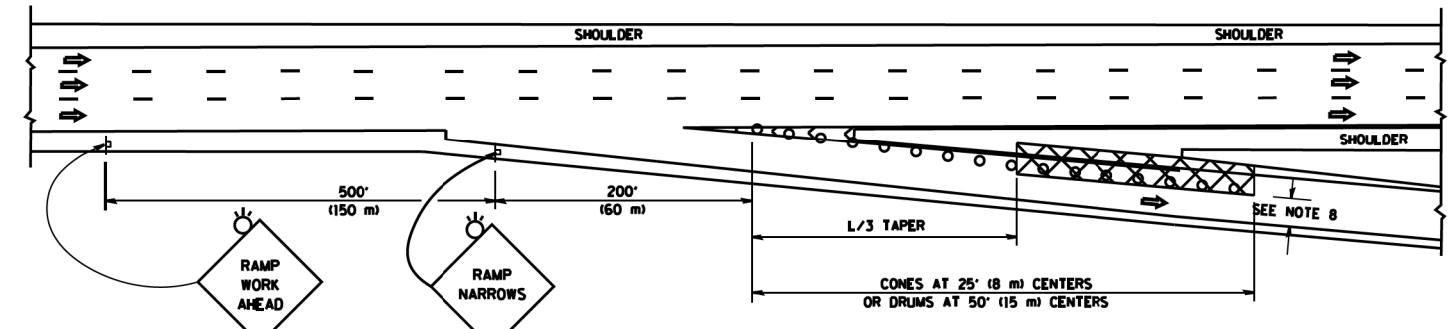
**SHOULDER CLOSURE DETAILS**



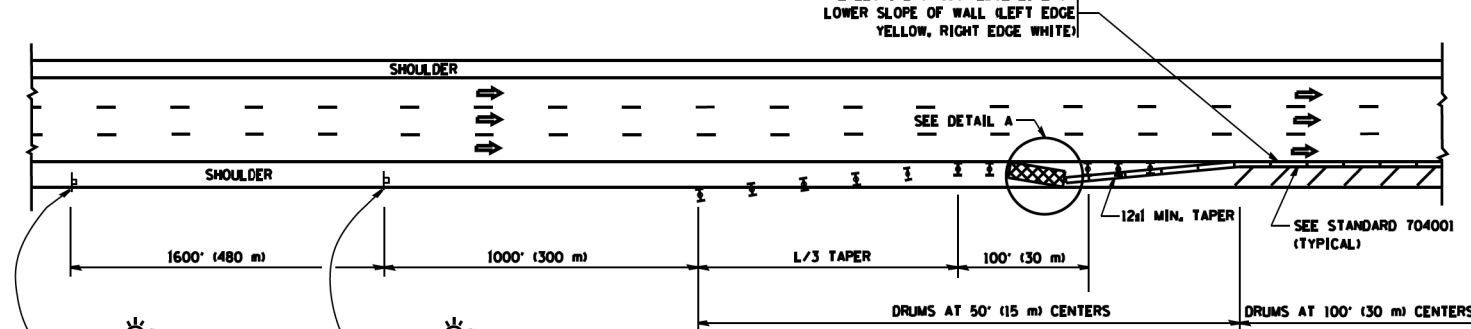
**TYPICAL ENTRANCE RAMP**



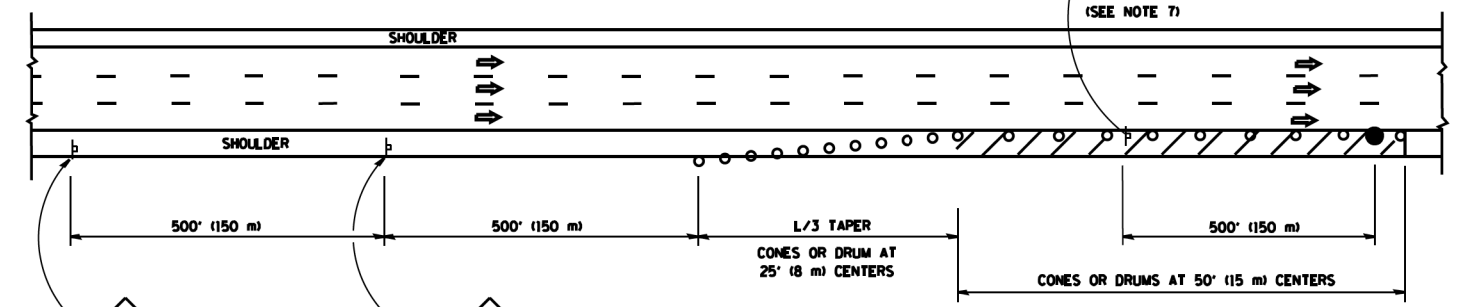
**TYPICAL EXIT RAMP**



**TYPICAL EXIT RAMP**



**PERMANENT SHOULDER CLOSURE**



**DAYTIME SHOULDER CLOSURE**

**SYMBOLS**

- ACTIVE WORK AREA
- SIGN ON PORTABLE OR PERMANENT SUPPORT
- FLAGGER WITH CONTROL SIGN
- TYPE II BARRICADE OR DRUM WITH STEADY BURN MONO-DIRECTIONAL LIGHT
- CONE, DRUM OR BARRICADE
- IMPACT ATTENUATOR OF TYPE AND TEST LEVEL SPECIFIED

**GENERAL NOTES**

1. THE "L" DISTANCE EQUALS:
 

SPEED LIMIT	FORMULAS
45 mph (80 km/h) OR GREATER	METRIC ENGLISH L=0.65(WNS) L=(WNS)
W = WIDTH OF OFFSET IN FEET (METERS)	
S = NORMAL POSTED SPEED MPH (KM/H)	
2. PLASTIC DRUMS WITH HIGH PERFORMANCE REFLECTIVE SHEETING AND STEADY BURNING LIGHTS ARE REQUIRED FOR ALL NIGHTTIME CLOSURES.
3. ALL SIGNS SHALL BE POST MOUNTED IF THE CLOSURE TIME EXCEEDS FOUR DAYS.
4. FLASHING LIGHTS SHALL BE USED DURING THE HOURS OF DARKNESS AND SHALL BE INSTALLED ABOVE THE FIRST TWO SETS OF SIGNS.
5. THE IMPACT ATTENUATOR, TEMPORARY IS NOT REQUIRED WHEN THE TEMPORARY CONCRETE BARRIER WALL IS PROTECTED BY OR IS TIED INTO THE EXISTING GUARDRAIL. IF OFFSET IS LESS THAN 5 FEET USE NARROW USE TYPE DEVICE TO MEET NCHRP350/MASH.
6. AUTHORIZATION FROM THE DISTRICT'S BUREAU OF TRAFFIC IS REQUIRED FOR ALL FREEWAY CLOSURES.
7. THE FLAGGER AND FLAGGER SIGN ARE REQUIRED AT THE ABOVE WORK SITES WHEN:
  - a. FOUR OR MORE WORK VEHICLES ENTER THE TRAFFIC LANES IN A ONE HOUR PERIOD.
  - b. THE WORK ACTIVITY REQUIRES FREQUENT ENCROACHMENT INTO THE LANE OPEN TO TRAFFIC.
 THE FLAGGER SHALL BE STATIONED APPROXIMATELY 100' (30 m) TO 200' (60 m) IN ADVANCE OF THE WORKERS.
8. 12' MIN. WIDTH TANGENT SECTION  
16' MIN. WIDTH CURVE SECTION.

ARRAY DESIGN PER MANUFACTURER TO BE NCHRP 350/MASH COMPLIANT.

DETAIL "A"  
IMPACT ATTENUATOR, TEMPORARY  
(SEE NOTE 5)

ALL DIMENSIONS ARE IN INCHES (MILLIMETERS) UNLESS OTHERWISE SHOWN.

COMPANY NAME: #COMPANY NAMES  
 PROJECT CONTACT: #PROJECT CONTACTS  
 DATE PLOTTED: 5/17/2017 14:53:36 PM  
 FILE NAME: D:\62858\srnt-det-TC17.dgn  
 PLOT DRIVER: IL\_Pdf.plt  
 PEN TABLE: plot.tbl

FILE NAME =	USER NAME = lveysa	DESIGNED -	REVISED - J.A.F. 12-06
ea:\pwwork\pwwork\lveysa\00108315\tcl7.dgn		DRAWN - D.W.S.	REVISED - S.P.B. 01-07
	PLOT SCALE = 100.0000' / 1" =	CHECKED -	REVISED - S.P.B. 12-09
	PLOT DATE = 4/17/2014	DATE - 11-96	REVISED - M.D. 06-13

**STATE OF ILLINOIS  
DEPARTMENT OF TRANSPORTATION**

TRAFFIC CONTROL DETAILS FOR FREEWAY			
SHOULDER CLOSURES AND PARTIAL RAMP CLOSURES			
SCALE: NONE	SHEET NO. 1 OF 1	SHEETS	STA. TO STA.

F.A.I. RTE.	SECTION	COUNTY	TOTAL SHEETS	SHEET NO.
90	2015-0741	COOK	14	14
TC-17			CONTRACT NO. 62B58	
FED. ROAD DIST. NO. 1 ILLINOIS FED. AID PROJECT				